

Installation

The myQ Smart LED Garage Light is designed to plug directly into a standard 120V outlet. Select an appropriate location on the ceiling or wall to mount the light within 6 feet (1.83 m) of an electrical outlet so that the cord and light are away from moving parts.

NOTE: If installing light on drywall and a ceiling joist cannot be located, use the drywall anchors provided. No pilot hole is required for drywall anchors.

1. With the smart light lens open, hold the device up to the surface of the desired mounting location within 6 ft. from the electrical outlet. Mark screw hole locations on the mounting surface with a pen or pencil (Figure 1).
2. If mounting to a wooden joist, use a 1/8" bit to drill pilot holes at marked locations. **OR** Screw in the provided drywall anchors at marked mounting locations.
3. Determine the length of power cord needed to reach the nearest outlet. Wind any excess cord around cord retainer on the top side of the smart light base. Route the cord through the channel so that the light is flush when mounted.
4. Line up the smart light's screw holes with the marked mounting locations, insert the provided screws into the mounting guide holes, and screw in the smart light.
5. Close the smart light lens.
6. Plug in the smart light to the outlet. **NOTE:** The LED light is very bright and will blink while programming. DO NOT stare at the light while on a ladder.

Programming

PROGRAM A DOOR OPENER/OPERATOR TO THE myQ SMART LED GARAGE LIGHT

1. Press the LEARN button on the smart light until the green LED turns ON (Figure 2).
2. Do one of the following operations (Figure 3):
 - Press the LEARN button on the door opener/operator. **OR**
 - Press the LEARN button on the door control twice. **OR**
 - On an LCD Smart Control Panel®, go to Menu > Program > myQ Device. **OR**
 - Using the myQ App, go to Menu > Program > myQ Device.
 1. Open myQ app
 2. Press your myQ account (icon at upper left screen) to open account settings.
 3. Press "Device Management" to display the provisioned GDOs.
 4. Press your GDO (under "Hubs") to pair to your Smart LED Garage Light.
 5. Press "Add New" (under Devices/Sensors paired to this Hub") to see list of device list.
 6. Press "Smart LED Garage Light" to add this new device and follow the steps to pair the Smart LED Garage Light.
 7. After pressing the learn button on the Smart LED Garage Light, Press "Next" to finish.

The Smart LED Garage Light will blink once to confirm that it was successfully paired.

The device has been learned when the smart light blinks once.

Once paired, the Smart LED Garage Light is added to your myQ account as an accessory.

PROGRAM A SECURITY+ 2.0® REMOTE CONTROL TO THE myQ SMART LED GARAGE LIGHT

1. Press the LEARN button on the smart light until the green LED turns ON (Figure 2).
2. Press the button on the remote control that you wish to operate the smart light.
3. The device has been learned when the smart light blinks once.

To program the smart light with another accessory, refer to the manual for your accessory.

TO ERASE ALL PROGRAMMING FROM THE myQ SMART LED GARAGE LIGHT

Press and hold the LEARN button on the smart light until the green LED turns off (6-10 seconds). All programming is now erased.

Maintenance

- Unplug the smart light before cleaning.
- Use a lightly dampened cloth for cleaning.
- DO NOT use liquid cleaners on the light lens.

⚠ WARNING

To reduce the risk of SEVERE INJURY or DEATH:

- This portable luminaire has a polarized plug (one blade is wider than the other) as a feature to reduce the risk of electric shock.
- This plug will fit in a polarized outlet ONLY one way. If the plug does not fit fully in the outlet, reverse the plug. If it still does not fit, contact a qualified electrician.
- DO NOT alter the plug.
- Light is intended for indoor ceiling or wall mount applications ONLY.

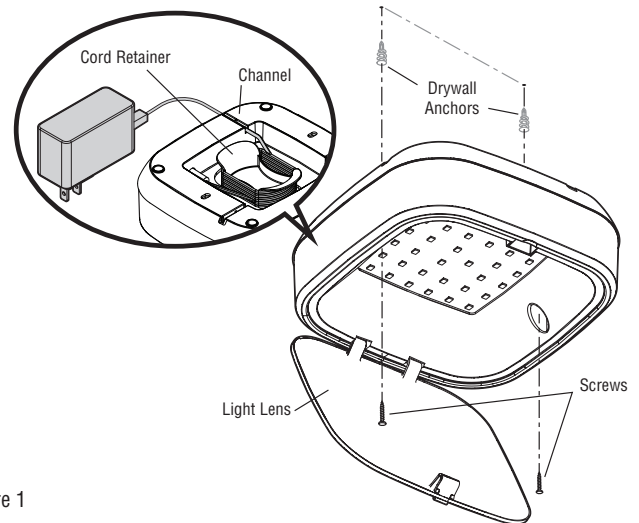


Figure 1

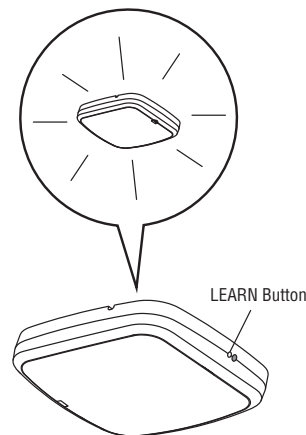


Figure 2

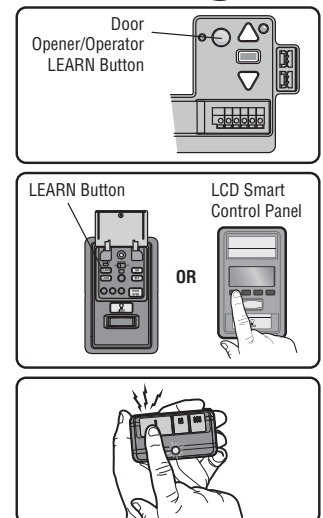


Figure 3



WARNING: This product can expose you to chemicals including lead, which are known to the State of California to cause cancer or birth defects or other reproductive harm. For more information go to www.P65Warnings.ca.gov.

FCC statements:

This equipment has been tested and found to comply with the limits for a Class B digital device, pursuant to part 15 of the FCC Rules. These limits are designed to provide reasonable protection against harmful interference in a residential installation. This equipment generates uses and can radiate radio frequency energy and, if not installed and used in accordance with the instructions, may cause harmful interference to radio communications. However, there is no guarantee that interference will not occur in a particular installation. If this equipment does cause harmful interference to radio or television reception, which can be determined by turning the equipment off and on, the user is encouraged to try to correct the interference by one or more of the following measures:

- Reorient or relocate the receiving antenna.
- Increase the separation between the equipment and receiver.
- Connect the equipment into an outlet on a circuit different from that to which the receiver is connected.
- Consult the dealer or an experienced radio/TV technician for help.

This equipment complies with FCC RF radiation exposure limits set forth for an uncontrolled environment. This equipment should be Installed and operated with minimum distance 20cm between the radiator & your body.

This device complies with part 15 of the FCC rules. Operation is subject to the following two conditions:

- (1) this device may not cause harmful interference, and
- (2) this device must accept any interference received, including interference that may cause undesired operation.

Warning: Changes or modifications to this unit not expressly approved by the party responsible for compliance could void the user's authority to operate the equipment.

IC statements:

This device contains licence-exempt transmitter(s)/receiver(s) that comply with Innovation, Science and Economic Development Canada's licence-exempt RSS(s). Operation is subject to the following two conditions:

- (1) This device may not cause interference.
- (2) This device must accept any interference, including interference that may cause undesired operation of the device.

L'émetteur/récepteur exempt de licence contenu dans le présent appareil est conforme aux CNR d'Innovation, Sciences et Développement économique Canada applicables aux appareils radio exempts de licence.

L'exploitation est autorisée aux deux conditions suivantes :

- 1) L'appareil ne doit pas produire de brouillage;
- 2) L'appareil doit accepter tout brouillage radioélectrique subi, même si le brouillage est susceptible d'en compromettre le fonctionnement.

DÉCLARATION D'IC SUR L'EXPOSITION AUX RADIATIONS:

Cet équipement respecte les limites d'exposition au rayonnement RF IC établies pour un environnement non contrôlé. Cet équipement doit être installé et utilisé avec une distance minimale de 20cm entre le radiateur et votre corps.