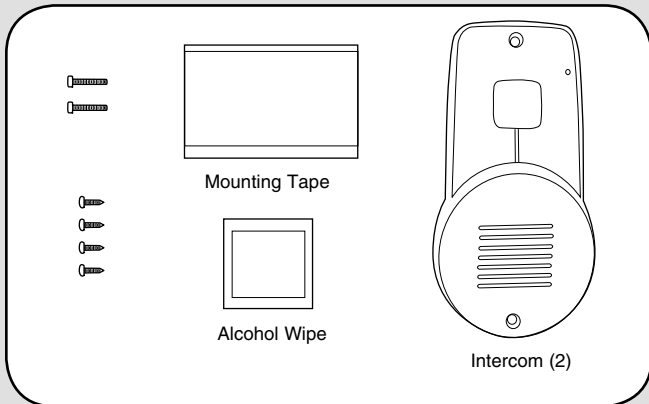


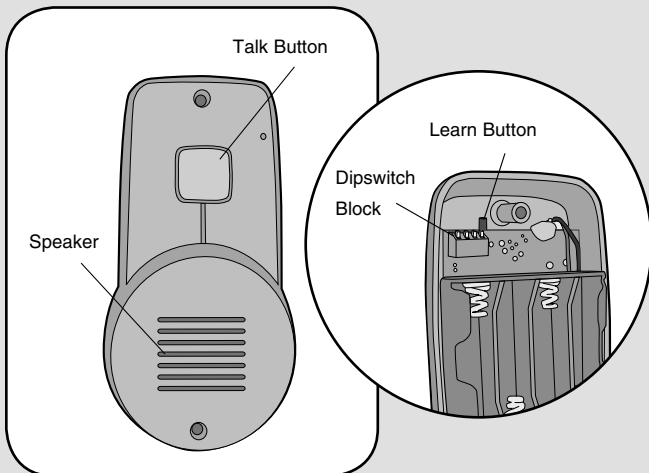
### Overview

The Intercom has up to a 1000' range and allows multiple simultaneous conversations, using a 900 MHz secure digital radio link. The intercoms form an exclusive network and respond only to other intercoms in the network.

### Carton Inventory



### Operation & Features



**Talk Button:** To talk, hold down the Talk button and all intercoms in the network will receive the signal. When holding down the Talk button on a different intercom, a secure channel is created and the other intercoms in the network do not hear the conversation.

**Battery:** The AA Alkaline batteries (not provided) will last up to a year depending on use (Lithium batteries recommended for colder environments). When the batteries are low it will emit two beeps every ten minutes.

**Call Mode:** In Call Mode the intercom may only be used to call the intercom network and will not be able to hear conversation from within the network. To put intercom into Call Mode place Dipswitch #1 to the UP position.



**Volume:** To increase the intercom volume, place Dipswitch #4 to the UP position.



**Sensitivity:** The sensitivity setting controls the speaker volume on the other intercom. To increase the speaker volume on the other intercom place Dipswitch #3 to the UP position.



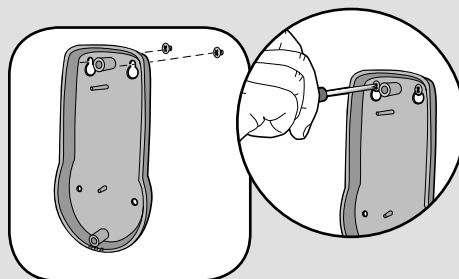
**NOTE:** Dipswitch #2 is not used.

### Mounting Intercom

The Intercom can be mounted by using the included screws or by using the double-sided mounting tape. It is recommended to use the mounting tape on surfaces such as metal or glass.

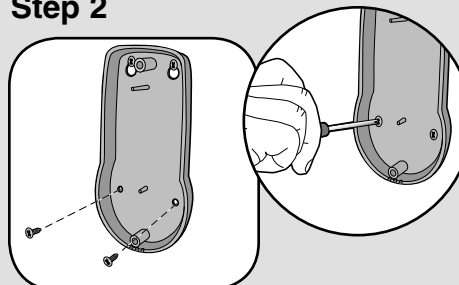
#### Mounting with Screws

##### Step 1



Mount Intercom with small silver screws. See mounting template on page 3. Screw the top two screws halfway into the mounting surface. Place back of intercom over screws. Tighten screws.

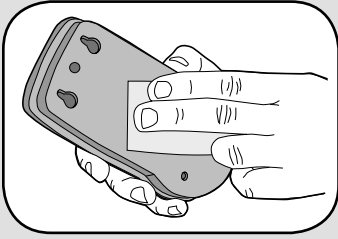
##### Step 2



Put the remaining silver screws into the bottom holes of intercom. Tighten screws.

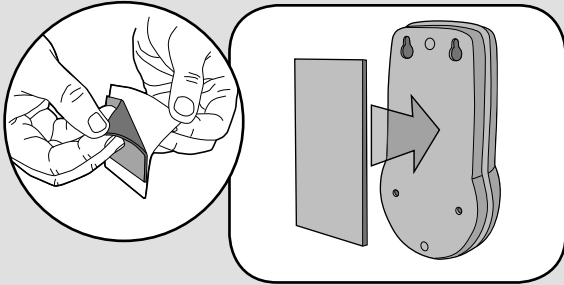
## Mounting with Tape

### Step 1



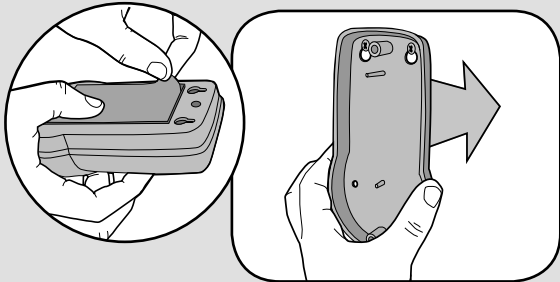
Clean back of intercom and mounting surface using the alcohol wipe.

### Step 2



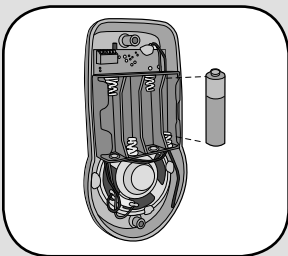
Peel off white paper from mounting tape. Firmly press mounting tape on back of intercom.

### Step 3



Peel paper from mounting tape. Firmly press intercom onto mounting surface.

## Assemble Intercom

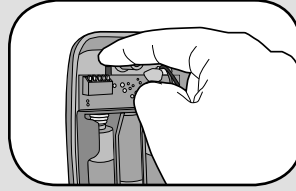


Install 4 AA Alkaline batteries (not provided). (Lithium batteries recommended for colder environments.)

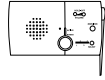

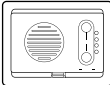
## Programming Intercom

The intercom must be programmed to at least one other intercom to become a network or it can be programmed into an existing network.

### Create New Network

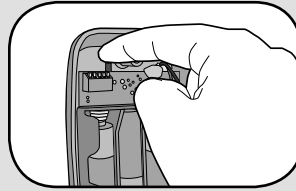


Press the Learn button on the new intercom until a beep is heard. Within 5 seconds put the second intercom into Learn Mode (refer to table below).

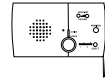


INTERCOM	LEARN MODE
 OR 	Press the Learn button until a beep is heard.
	Press and hold both buttons for 5 seconds.

Each intercom will emit a tone when programmed into network. Repeat for any additional intercoms.

### Add to an Existing Network



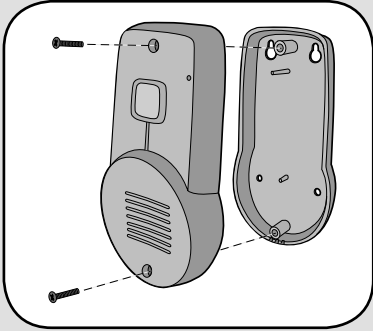
Press the Learn button on the new intercom until a beep is heard. Within 5 seconds put any networked intercom into Learn Mode (refer to table below).

INTERCOM	LEARN MODE
 OR 	Press the Learn button until a beep is heard.
	Press and hold both buttons for 5 seconds.

Each intercom will emit a tone when programmed into network. Repeat for any additional intercoms.

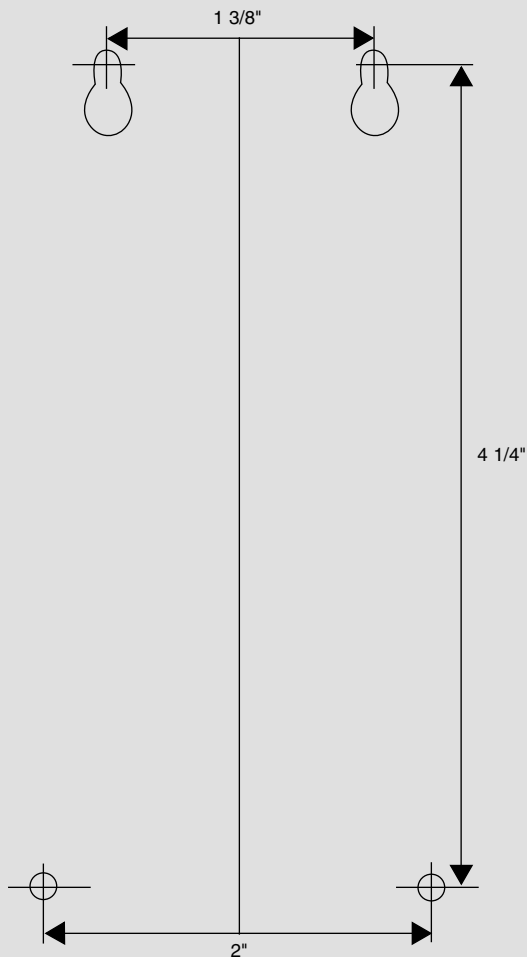
**NOTE:** Do not program new intercoms to each other before adding them to the network or they will form a separate network and the memory will need to be cleared.

## Secure Cover



Secure cover with the two large black screws.

## Mounting Template



## Troubleshooting

### Intercom does not function.

Check batteries in Intercom. When you press the Talk button you should hear a tone.

Ensure Intercom is connected to a network.

See Assemble & Program.

### Intercom is not getting expected transmission range.

Keep Intercom away from trees, metal objects and electrical wiring. Do not mount intercom on a tree, masonry, or metal surface.

### Intercom beeps every ten minutes.

The battery is low in the intercom. Replace with AA Alkaline batteries.

### Need to clear intercom's memory.

Press and hold Learn button, an initial beep will be heard. Continue to hold until a second beep is heard (about 15 seconds). Ensure other intercoms are not activated during this time. Intercoms in the network that are on will signal during the clearing process. Once memory is clear the intercom can be programmed to a new network.

**NOTE:** *Manufacturer is not responsible for any radio or TV interference caused by unauthorized modifications to this equipment. Changes or modifications not expressly approved by the manufacturer could void the authority to operate the equipment.*

## **One Year Limited Warranty**

The Chamberlain Group, Inc. warrants to the first retail purchaser of this product that it is free from defect in materials and/or workmanship for a period of 1 year from the date of purchase.

**FOR TECHNICAL SUPPORT DIAL OUR TOLL FREE NUMBER:**

**1-800-528-9131**

**[www.chamberlain-DIY.com](http://www.chamberlain-DIY.com)**

NOTICE: To comply with FCC and or Industry Canada rules (IC), adjustment or modifications of this receiver and/or transmitter are prohibited, except for changing the code setting or replacing the battery. THERE ARE NO OTHER USER SERVICEABLE PARTS.

Tested to Comply with FCC Standards FOR HOME OR OFFICE USE. Operation is subject to the following two conditions: (1) this device may not cause harmful interference, and (2) this device must accept any interference received, including interference that may cause undesired operation.