

How to charge the present product

A. Connect the USB cable to the output interface on the product and then plug the end of the USB cable into the input interface of charging device, then the LED lights will be glittering blue, products thus starting to charge. 4 LED lights are all in blue, showing it is charged full.

B. After charged full, press the power button to turn off.

Notice:

1. Do not expose this product to high temperature, such as sunshine, fire etc..
2. Do not put it in the water or other liquid.
3. Do not crash or impact this product.
4. Do not stick metal label or any other items on the surface of receiver or transmitter of the wireless charger.
5. Before you want to implant pacemaker or other medical appliances on this product, ask your doctor and implants manufacture for their advice.
6. Do not use extension cable and/or overload printed circuit board.

**The power load capacity of this product is 15W.
The circuit will stop working if more than 15W.**

FC CE  RoHS

Smart Table

With power bank and wireless charger

User Manual

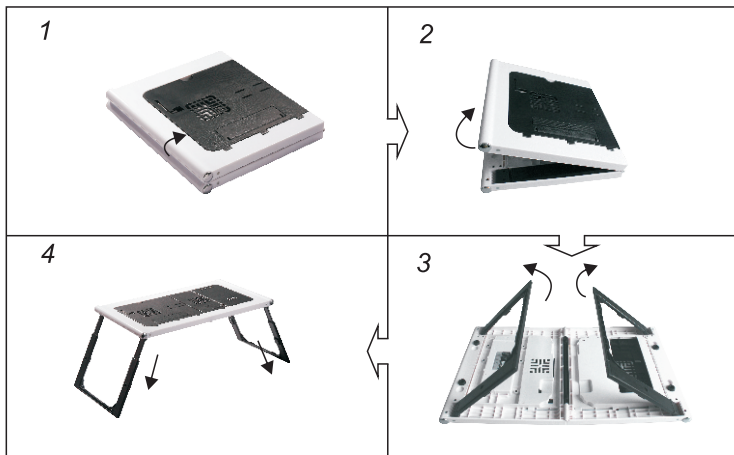
LD99-3

3

The present product including:

- 1 1 pc of LD99-3
- 2 1 USB cable
- 3 1 LED light
- 4 1 User Manual

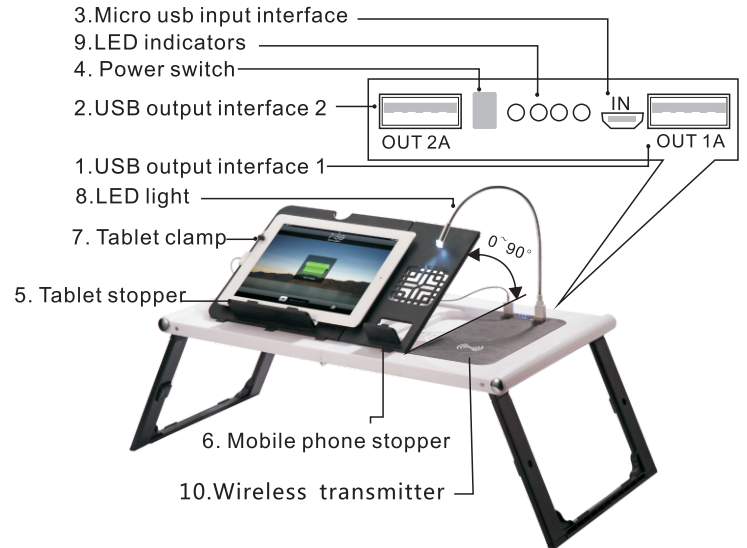
How to use



1. When the product is folded
2. Open the product as shown
3. Open the legs as shown
4. Adjust the legs height as shown
5. Lift the supporting board and adjust the board height as you like
6. Fix the tablet with the clamp on the left top
7. Place the tablet on position as shown

1

Indications of parts:



Specifications

Item No.: LD99-3
Weight : 2.22kg
Size (folded): 33*28*5cm
Size (open): 78*33*(22~28)cm
Input: DC 5V/2.1A

With power bank

Capacity: 10000mAh
USB Output1: DC 5V/1A
USB Output2: DC 5V/2A

With wireless charger

Output: DC 5V/1A
Wireless charging standard: Qi

LED Light Indications:

Blinking blue	Normal charging
Blue	Stand-by or full
1 light blue	battery capacity 0% - 25%
2 lights blue	battery capacity 25% - 50%
3 lights blue	battery capacity 50% - 75%
4 lights blue	battery capacity 75% - 100%

2

FCC STATEMENT :

This device complies with Part 15 of the FCC Rules. Operation is subject to the following two conditions:

- (1) This device may not cause harmful interference, and
- (2) This device must accept any interference received, including interference that may cause undesired operation.

Warning: Changes or modifications not expressly approved by the party responsible for compliance could void the user's authority to operate the equipment.

NOTE: This equipment has been tested and found to comply with the limits for a Class B digital device, pursuant to Part 15 of the FCC Rules. These limits are designed to provide reasonable protection against harmful interference in a residential installation.

This equipment generates uses and can radiate radio frequency energy and, if not installed and used in accordance with the instructions, may cause harmful interference to radio communications. However, there is no guarantee that interference will not occur in a particular installation. If this equipment does cause harmful interference to radio or television reception, which can be determined by turning the equipment off and on, the user is encouraged to try to correct the interference by one or more of the following measures:

- Reorient or relocate the receiving antenna.
- Increase the separation between the equipment and receiver.
- Connect the equipment into an outlet on a circuit different from that to which the receiver is connected.
- Consult the dealer or an experienced radio/TV technician for help.

RF warning statement:

The device has been evaluated to meet general RF exposure requirement. The device can be used in portable exposure condition without restriction.