

To receive product information, register your product online. It's quick and easy!

Log on to http://www.chaneyinstrument.com/product_reg.htm

LIMITED ONE YEAR WARRANTY

Chaney Instrument Company warrants that all products it manufactures to be of good material and workmanship and to be free of defects if properly installed and operated for a period of one year from date of purchase. REMEDY FOR BREACH OF THIS WARRANTY IS EXPRESSLY LIMITED TO REPAIR OR REPLACEMENT OF DEFECTIVE ITEMS. Any product which, under normal use and service, is proven to breach the warranty contained herein within ONE YEAR from date of sale will, upon examination by Chaney, and at its sole option, be repaired or replaced by Chaney. In all cases, transportation costs and charges for returned goods shall be paid for by the purchaser. Chaney hereby disclaims all responsibility for such transportation costs and charges. This warranty will not be breached, and Chaney will give no credit for products it manufactures which shall have received normal wear and tear, been damaged, tampered, abused, improperly installed, damaged in shipping, or repaired or altered by others than authorized representatives of Chaney.

THE ABOVE-DESCRIBED WARRANTY IS EXPRESSLY IN LIEU OF ALL OTHER WARRANTIES, EXPRESS OR IMPLIED, AND ALL OTHER WARRANTIES ARE HEREBY EXPRESSLY DISCLAIMED, INCLUDING WITHOUT LIMITATION THE IMPLIED WARRANTY OF MERCHANTABILITY AND THE IMPLIED WARRANTY OF FITNESS FOR A PARTICULAR PURPOSE. CHANEY EXPRESSLY DISCLAIMS ALL LIABILITY FOR SPECIAL, CONSEQUENTIAL OR INCIDENTAL DAMAGES, WHETHER ARISING IN TORT OR BY CONTRACT FROM ANY BREACH OF THIS WARRANTY. SOME STATES DO NOT ALLOW THE EXCLUSION OR LIMITATION OF INCIDENTAL OR CONSEQUENTIAL DAMAGES, SO THE ABOVE LIMITATION OR EXCLUSION MAY NOT APPLY TO YOU. CHANEY FURTHER DISCLAIMS ALL LIABILITY FROM PERSONAL INJURY RELATING TO ITS PRODUCTS TO THE EXTENT PERMITTED BY LAW. BY ACCEPTANCE OF ANY OF CHANEY'S EQUIPMENT OR PRODUCTS, THE PURCHASER ASSUMES ALL LIABILITY FOR THE CONSEQUENCES ARISING FROM THEIR USE OR MISUSE. NO PERSON, FIRM OR CORPORATION IS AUTHORIZED TO ASSUME FOR CHANEY ANY OTHER LIABILITY IN CONNECTION WITH THE SALE OF ITS PRODUCTS. FURTHERMORE, NO PERSON, FIRM OR CORPORATION IS AUTHORIZED TO MODIFY OR WAIVE THE TERMS OF THIS PARAGRAPH, AND THE PRECEDING PARAGRAPH, UNLESS DONE IN WRITING AND SIGNED BY A DULY AUTHORIZED AGENT OF CHANEY. THIS WARRANTY GIVES YOU SPECIFIC LEGAL RIGHTS, AND YOU MAY ALSO HAVE OTHER RIGHTS WHICH VARY FROM STATE TO STATE.

For in-warranty repair, please contact:

Customer Care Department
Chaney Instrument Company
965 Wells Street
Lake Geneva, WI 53147

Chaney Customer Care 877-221-1252
Mon-Fri 8:00 a.m. to 4:45 p.m. CST

www.chaneyinstrument.com



This device complies with part 15 of the FCC rules. Operation is subject to the following two conditions:

- 1- This device may NOT cause harmful interference, and
- 2- This device must accept any interference received, including interference that may cause undesired operation.

NOTE: This equipment has been tested and found to comply with the limits for a Class B digital device, pursuant to Part 15 of the FCC rules. These limits are designed to provide

reasonable protection against harmful interference in a residential installation. This equipment generates, uses and can radiate radio frequency energy and, if not installed and used in accordance with the instructions, may cause harmful interference to radio communications. However, there is no guarantee that interference will not occur in a particular installation. If this equipment does cause harmful interference to radio or television reception, which can be determined by turning the equipment off and on, the user is encouraged to try to correct the interference by one or more of the following measures:

- Reorient or relocate the receiving antenna.
- Increase the separation between the equipment and the receiver.
- Connect the equipment into an outlet on a circuit different from that to which the receiver is connected.
- Consult the dealer or an experienced radio/TV technician for help.

NOTE: The manufacturer is not responsible for any radio or TV interference caused by unauthorized modifications to this equipment. Such modifications could void the user authority to operate the equipment.

Patent numbers: 5,978,738; 6,076,044; 6,597,990

ACURITE®
DESIGNED TO WORK FOR YOU™

Wireless Weather Station
model #00634

Instruction Manual



A. Main Unit

B. Wireless Sensor

Package Contents:

- (1) Main Unit (A) with stand
- (1) Wireless Sensor (B) with mounting bracket

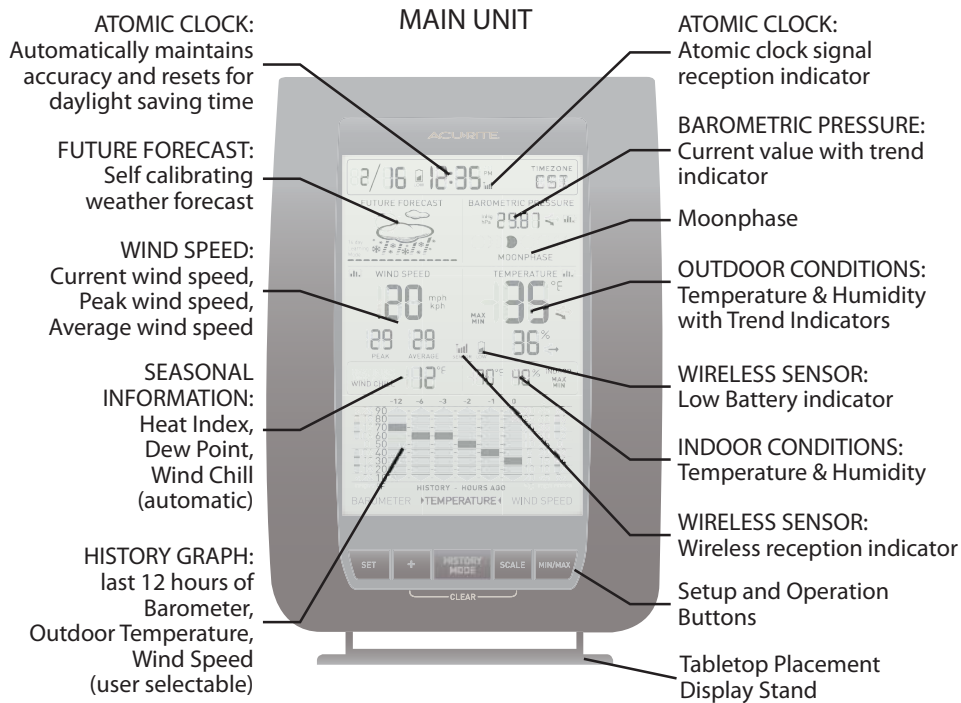
What You Need:

- Small Phillips Screwdriver
- (7) AA batteries

Thank You for purchasing this ACURITE® product. Please read this manual in its entirety to fully enjoy the benefits and features of this product. Please keep this manual for future reference.

NOTE: A clear film is applied to the LCD at the factory that must be removed prior to using this product. Locate the clear tab and simply peel to remove.

SECTION 1 • OVERVIEW OF FEATURES



About the Atomic Clock

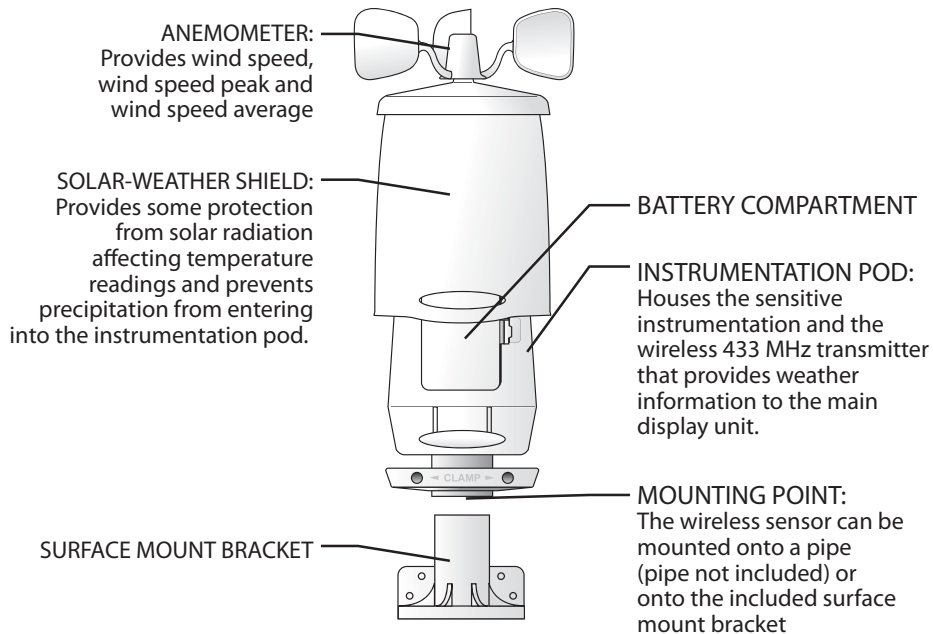
A clock is considered atomic if it has an accuracy of one second in a million years. Consumer clocks are considered atomic if they attain this accuracy by receiving a signal from an atomic clock. In North America, the National Institute of Standards and Technologies operates an atomic clock in Colorado which transmits the time codes via the radio station WWVB. The Acurite clock you have purchased includes a built-in receiver which picks up the signal from the WWVB station. For the best possible reception, place the main unit with the back side facing Colorado. **NOTE:** Due to solar radiation in the atmosphere, the atomic clock signal is weaker during the day. Most synchronization with the WWVB atomic clock signal happens at night when there is less interference.

About the Wireless Sensor

This wireless weather station features a wireless sensor that provides wind, temperature and humidity data and broadcasts this information to the main display unit. This wireless sensor will provide accurate outdoor weather conditions when placed properly. The wireless sensor contains sensitive electronic components and a balanced anemometer (for wind speed measurement). Care must be taken during setup and when considering placement to make certain the unit is not dropped or struck with any falling debris from trees or structures.

SECTION 2 • SETUP

WIRELESS SENSOR



A/B/C Wireless Selection

To allow for more than one weather station and wireless sensor network to be used in close proximity, the main unit and the wireless sensor have a small switch labeled "A B C" within the battery compartments. This switch selects one of 3 wireless modes to use, and both switches **MUST** be set in matching positions (either A, B, or C) for wireless communication to take place successfully.

Battery Choice & Temperature Range

Extended periods of cold temperatures (below -4°F / -20°C) can cause alkaline batteries to function improperly. This will cause the outdoor wireless sensor to stop transmitting temperature readings. Use lithium batteries in these low temperature conditions to ensure continued operation for wireless sensors placed outdoors. **NOTE:** Rechargeable batteries are not recommended due to higher operating voltages.

LITHIUM BATTERIES -40 °F (-40°C) (70°C) **158°F**

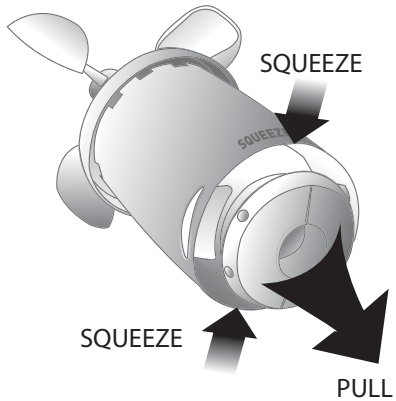
ALKALINE BATTERIES **-4°F (-20°C)** (70°C) **158°F**

Install Batteries

NOTE: Install all batteries in both units within a 6 minute period to ensure proper wireless functionality. Always install batteries into the wireless sensor FIRST.

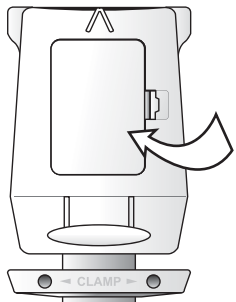
Wireless Sensor - 4 "AA" Batteries Required (not included)

- 1 GENTLY SQUEEZE OUTER CASING AND PULL INNER INSTRUMENT POD OUT

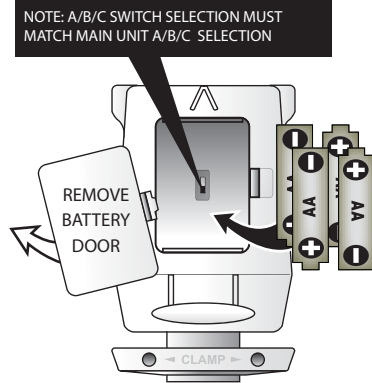


- 2 SET THE OUTER CASING ASIDE, TAKE CARE THAT IT IS NOT DROPPED

- 5 REPLACE BATTERY COMPARTMENT COVER

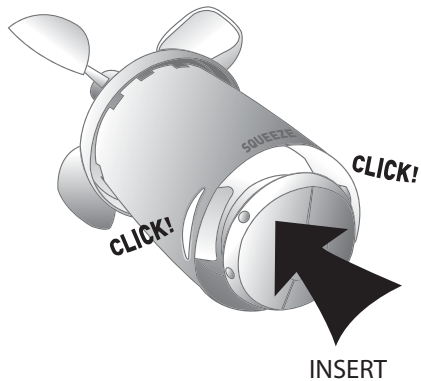


- 3 REMOVE BATTERY COMPARTMENT COVER



- 4 INSERT 4 FRESH "AA" BATTERIES AND REPLACE BATTERY COMPARTMENT COVER.

- 6 RE-INSTALL INNER INSTRUMENT POD UNTIL TABS ALIGN AND YOU HEAR A "CLICK"

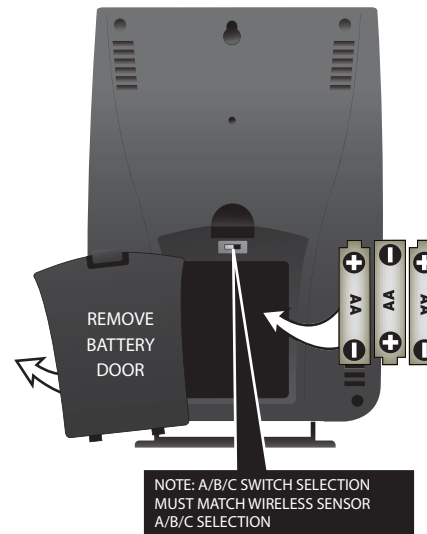


Install Batteries

NOTE: Install all batteries in both units within a 6 minute period to ensure proper wireless functionality. Always install batteries into the wireless sensor FIRST.

Main Unit - 3 "AA" Batteries Required (not included)

- 1 REMOVE BATTERY COMPARTMENT COVER



- 2 INSERT 3 FRESH "AA" BATTERIES

- 3 REPLACE BATTERY COMPARTMENT COVER



PLEASE DISPOSE OF OLD OR DEFECTIVE BATTERIES IN AN ENVIRONMENTALLY SAFE WAY AND IN ACCORDANCE WITH YOUR LOCAL LAWS AND REGULATIONS.

BATTERY SAFETY: Clean the battery contacts and also those of the device prior to battery installation. Remove batteries from equipment which is not to be used for an extended period of time. Follow the polarity (+/-) diagram in the battery compartment. Promptly remove dead batteries from the device. Dispose of used batteries properly. Only batteries of the same or equivalent type as recommended are to be used. DO NOT incinerate used batteries. DO NOT dispose of batteries in fire, as batteries may explode or leak. DO NOT mix old and new batteries or types of batteries (alkaline/standard). DO NOT use rechargeable batteries. DO NOT recharge non-rechargeable batteries. DO NOT short-circuit the supply terminals.

Main Unit : Basic Setup

After installing batteries, it is recommended that you set the clock and calendar initially. After the atomic clock signal is acquired, which may take up to 24 hours, the clock accuracy and daylight saving time changes will be automatically maintained.

To set the clock and other preferences, press AND HOLD the "SET" button for 5 seconds to enter into SET MODE. Once in set mode, the preference you are currently setting will blink on the display.

To adjust the currently selected (flashing) preference item, press the "+" button (press and HOLD to fast adjust).

To save your adjustments, press the "SET" button again to move on to adjusting the next preference. The preference set order is as follows:

TIME ZONE (PST MST CST EST)
 DST (Daylight Saving Time ON OR OFF)
 CLOCK HOUR
 CLOCK MINUTE
 YEAR
 CALENDAR MONTH
 CALENDAR YEAR

You will automatically exit SET MODE if no buttons are depressed for 30 seconds. You may enter basic setup mode again at any time by pressing AND HOLDING the "SET" button.

Main Unit : Scale Selection

The main unit is capable of displaying some values in an alternate scale mode. To switch between modes, press the "SCALE" button.

SCALE MODE 1 - U.S. Standard
 Temperature - °F (fahrenheit)
 Barometric Pressure- inHg (inches of mercury)
 Wind Speed/Peak/Average- mph (miles per hour)

SCALE MODE 2 - Imperial Standard
 Temperature - °C (Celsius)
 Barometric Pressure- hPa (Hectopascal)
 Wind Speed/Peak/Average- kph (kilometers per hour)

NOTE: The "WIND SPEED" history mode chart will not change to "kph" scale, it will remain displaying "mph" data.

Setup is Now Complete

The wireless sensor will soon send a signal to the main unit and the two units will be synchronized. It may take a few minutes for synchronization to be complete. If both or one of the units appear to be functioning improperly, refer to the troubleshooting section in this manual.

SECTION 3 • OPERATION



A 14 Day Learning Mode

This weather station has a patented "fourteen day learning mode" calibration process. During this learning mode the weather station will make altitude calculations that may affect the accuracy of the forecast. Once the 14 day learning mode process is complete, the learning mode icon will disappear and the weather forecast should be ready for superior operation.

14 day
 Learning
 Mode



B Future Forecast Icon

The future forecast feature automatically gives you the predicted weather forecast icon for the next 12 to 24 hours based on an advanced algorithm that analyzes barometric pressure changes and temperature. This weather forecaster will provide the most accurate forecast that a single station instrument can provide.

rain or snow



HEAVY STORM
 heavy stormy weather conditions are forecasted when flashing

rain or snow



STORMY
 stormy conditions are forecasted next 12-24 hours



MOSTLY CLOUDY
 mostly cloudy conditions are forecasted next 12-24 hours



PARTLY CLOUDY
 partly cloudy conditions are forecasted next 12-24 hours



MOSTLY SUNNY
 mostly sunny conditions are forecasted next 12-24 hours



C Wind Speed Data Window

This weather station features an advanced wind speed data window that provides the wind speed, the peak value and the average value.

WIND SPEED: most current wind speed reading, this value is updated every 18 seconds.

PEAK: the highest wind speed reading recorded in the last hour.

AVERAGE: the combined averaged wind speed readings from the last 2 minutes.

NOTE: The wireless sensor must be placed outdoors to observe outdoor wind speed.

D Seasonal Window (wind chill/dew point/heat index)

This weather station features a "Seasonal" window which will automatically display the wind chill, the dew point or the heat index information when it is relevant.

less than 40°F (4°C)

WIND CHILL


between 41°F - 79°F
(5°C - 26°C)

DEW POINT

above 80°F (27°C)

HEAT INDEX

E History Mode Graphing

This weather station features a selectable history mode which will graph and display the changes for the last 12 hours (-12,-6,-3,-2,-1, 0). There are 3 selectable weather categories; Barometer (barometric pressure), Temperature or Wind Speed. Press the "HISTORY MODE" button to alternate through the 3 options. Note the graphing icon  next to the currently selected data window.

BAROMETER: hourly reading on the hour.

TEMPERATURE: hourly (outdoor) temperature reading on the hour.

WIND SPEED: hourly wind speed AVERAGE reading.

F Wireless Signal Reception Icons

The main unit has a signal reception icon in the outdoor wind speed/ temperature display area. If most or all four of the bars are present, wireless reception is good and no action is required. If there are a low number of "bars" present, you may experience wind speed/temperature inaccuracy. In either case, you may need to relocate the main unit or the wireless sensor.

The main unit has a signal reception icon near the atomic clock display. If the atomic clock signal bars are low, the clock may be inaccurate or may not automatically adjust for daylight saving time (DST). Refer to the troubleshooting section in this manual if you are having reception issues.

G Moonphase

This weather station features a moonphase window which will automatically display the current moonphase, provided the calendar is set properly.



NEW



WAXING
CRESCENT



1ST
QUARTER



WAXING
GIBBOUS



FULL



WANING
GIBBOUS



3RD
QUARTER



WANING
CRESCENT

Main Unit : MIN/MAX Memory

This wireless weather station features a MIN/MAX memory feature which records the MINIMUM and MAXIMUM indoor & outdoor temperature and humidity readings.

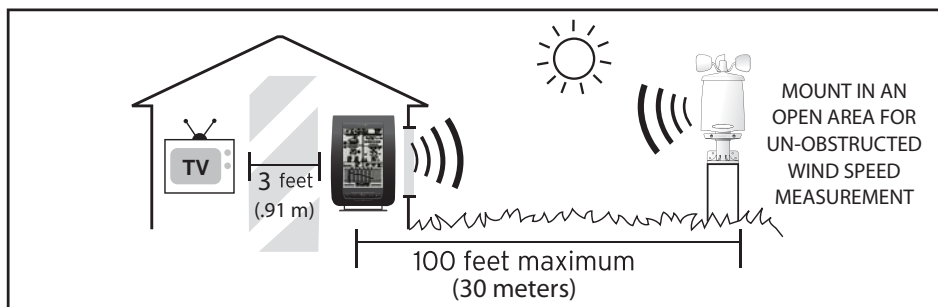
To view the MINIMUM temperature and humidity readings, press and release the "MIN/MAX" button. Note the "MIN" icon on the display.

To clear the MIN recorded values, press and hold the "+" and "SCALE" buttons simultaneously for 3 seconds while in the MIN view mode. Dashes will display in the display to confirm you have cleared the MIN values for outdoor temperature and indoor temperature/humidity.

To view the MAXIMUM temperature and humidity readings, press and release the "MIN/MAX" button. Note the "MAX" icon on the display.

To clear the MAX recorded values, press and hold the "+" and "SCALE" buttons simultaneously for 3 seconds while in the MAX view mode. Dashes will display in the display to confirm you have cleared the MAX values for outdoor temperature and indoor temperature/humidity.

SECTION 4 • PLACEMENT



Now that setup is complete and you understand how to operate the weather station, you must choose a location to place the wireless sensor and the main unit. The wireless sensor **MUST** be placed less than 100 feet (30 meters) away from the main unit.

This wireless weather station uses radio frequency for communication, which is susceptible to interference from other electronic devices and large metallic items or thick walls. Always place both units at least 3 feet (.91 m) away from appliances (TV, microwave, radios, etc.) or objects that may interfere with the wireless communication (large metal surfaces, thick stone walls, etc.).

Please **USE EXTREME CARE** when handling the wireless sensor and the main unit. The wireless sensor contains sensitive electronic components and a balanced anemometer (for wind speed measurement). Care must be taken during setup and when considering placement to make certain the unit is not dropped or struck with any falling debris from trees or structures.

USE CAUTION when utilizing tools or equipment for mounting the wireless sensor. Enlist the help of another individual when necessary.



Placement of Main Unit

Place the main unit in a dry area free of dirt and dust. To help ensure an accurate indoor temperature measurement, be sure to place the main unit out of direct sunlight, and away from any heat sources or vents in your home. For the best atomic clock signal reception, place the main unit with the back side facing the state of Colorado.

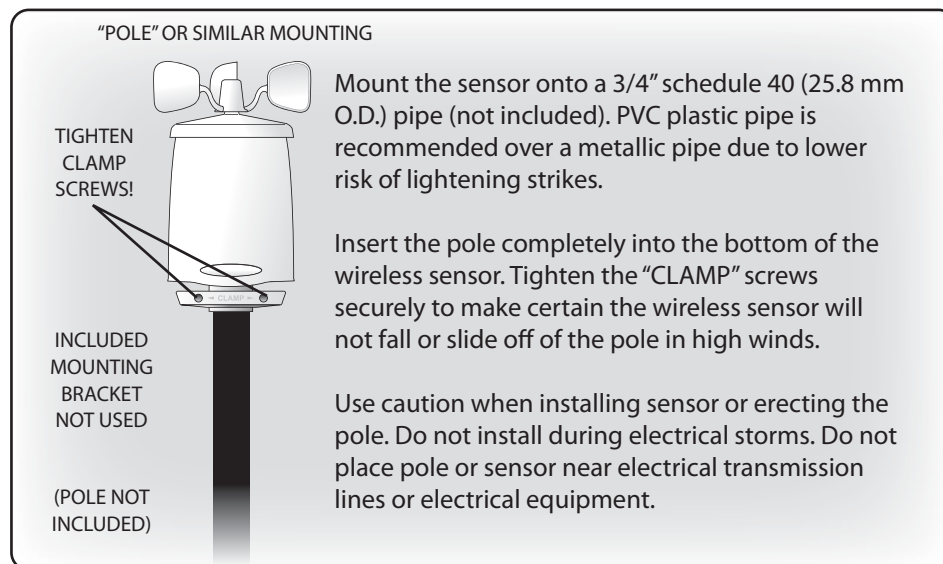
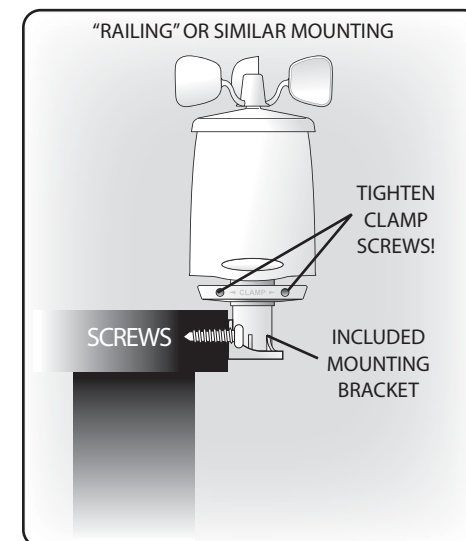
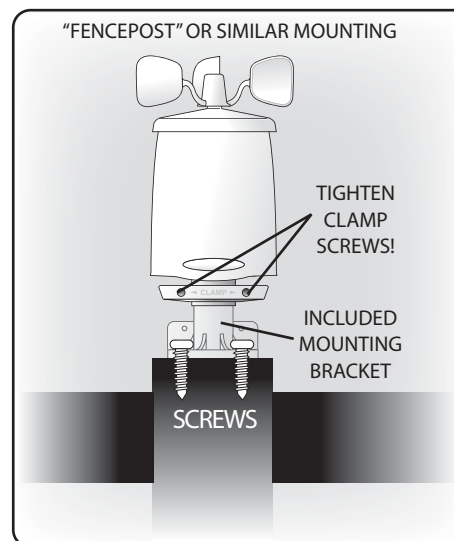
There are 2 placement options for the main unit. You may hang the main unit on a wall using the integrated hang hole. Alternatively, you may place the main unit on a table top or other flat surface using the included detachable table top display stand.



Placement of Sensor

The wireless sensor **MUST BE MOUNTED OUTDOORS** to observe outdoor temperature/humidity/wind speed and relay the information to the main unit display. The wireless sensor must be placed less than 100 feet (30 m) from the main unit.

The wireless sensor must be mounted securely. It is advised that the wireless sensor be mounted well above and away from all obstructions to report the wind speed accurately. There are three main mounting options to consider:



Measurement Ranges

Temperature
 Main Unit: 32°F to 122°F / 0°C to 50°C
 Wireless Sensor: -40°F to 158°F / -40°C to 70°C

Humidity
 Main Unit: 16% to 98% Relative Humidity
 Wireless Sensor: 1% to 99% Relative Humidity

Wind Speed
 Wireless Sensor: 0 to 100 m.p.h. / 0 to 161 kph

Specifications

Power Requirements
 Main Unit: 3 x "AA" alkaline or lithium batteries
 Wireless Sensor: 4 x "AA" alkaline or lithium batteries

Atomic Clock
 Frequency: WWVB 60Khz
 Synchronizes Daily

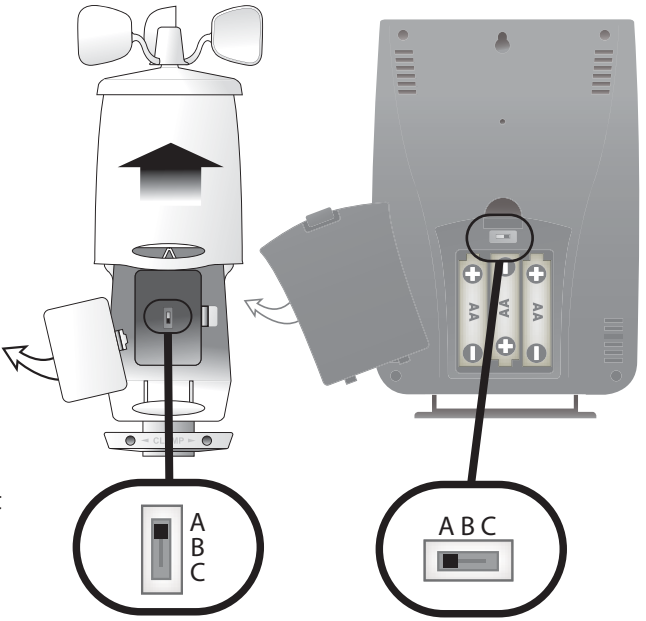
Wireless Communication 433 MHz Radio Frequency-Transmission every 18 seconds

Set Wireless ID

This wireless thermometer uses long range 433mhz radio frequency for communication.




In the event that you have reception problems due to interference, both the main unit and the wireless sensor have a selectable wireless ID. The ID switches are located within the battery compartments of the main unit and the wireless sensor.

You may choose A, B or C; but both the main unit and the wireless sensor ID's must match for successful synchronization.



Both wireless ID's must match

Troubleshooting

Problem	Possible Solution
<p>Bad Wireless Sensor Reception</p>  no bars	Relocate the main unit and/or the wireless sensor. Both units must be within 100 feet (30 m) from each other. Make sure both units are placed at least 3 feet (.91 m) from other electronic appliances and devices that may interfere with the wireless communication (such as TV's, microwaves, computers etc). NOTE: It may take up to 20 minutes for the main unit to re-synchronize with the sensor when batteries are replaced. Use lithium batteries in sensor when temperature is below -4°F (-20°C).
<p>Bad Atomic Clock Reception</p>  no bars	Rotate the wireless sensor 90° on its mounting point. Make certain there are no large stone or metallic surfaces disrupting the signal line-of-sight to the state of Colorado. Make sure the main unit and wireless sensor are placed at least 3 feet (.91 m) from other electronic appliances and devices that may interfere with the wireless communication (such as TV's, microwaves, computers etc). Large metallic surfaces will interfere with the atomic clock signal.
<p>No Wireless Sensor Data (no communication)</p>  no bars and flashing antenna icon	If wireless reception is bad (no bars), see "Bad Reception" section above. The wireless ID setting on each unit must match for all units to communicate properly. See "Set Wireless ID" on the previous page.
<p>Main Unit Display Not Working</p>	Make certain that the batteries are installed correctly and that they are contacting the terminals. Make certain all contacts are clean. The batteries may need replacing.



Please DO NOT return product to the retail store. For technical assistance and product return information, please call Customer Care: 877-221-1252 Mon. - Fri. 8:00 A.M. to 4:45 P.M. (CST)

www.chaneyinstrument.com