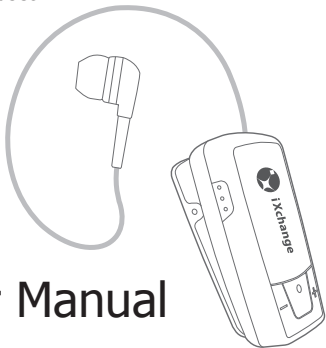




UA-06XB Beeper
Bluetooth® Headset



User Manual

Contents

Product Specifications	3
Components	3
“Beeper” Overview	4
Retractable Mechanism	5
Ringer and Anti-Lost Function	6
Wearing Style	7-10
Charging Your Headset	11
Getting Started	12
Pairing Your Headset with a Bluetooth® wireless technology enabled phone	12
Pairing Your Headset with Two Bluetooth® wireless technology enabled phone (Multi-point)	13
Reconnecting Your Headset	14
Using Your Headset	15-17
Troubleshooting	18-19
Safety Precautions	20
Maintenance	21

Product Specifications

Bluetooth® Specification:	v2.1+EDR
Bluetooth® Profiles Supported:	Headset and Handsfree
Operating Distance:	10 meters
Operating Temperature:	0-50 degree celsius
Charging Time:	Around 1.5 - 2 hours
Talk Time*:	Up to 7 hours
Standby Time*:	Up to 240 hours
Battery Type and Capacity:	Rechargeable Li-Polymer 100mAh
Dimension:	56.5(L) x 26(W) x 16(H) mm
Weight:	23g

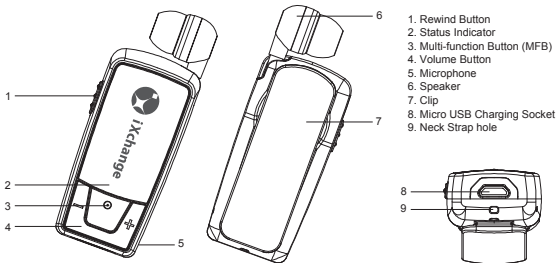
*May be varied by mobile phone settings and operator

Components

Inside the package, you should find:

- 1x Retractable Headset
- 1x USB Cable
- 1x Saver Charger
- 1x User Manual
- 2x Inear Cushion (L and S size each)
- 1x Neck Strap

Beeper Overview



Retractable Mechanism

The earpiece length can be extended by gently pulling the cord. The length can be retracted (shortened) by pressing the rewinding button.

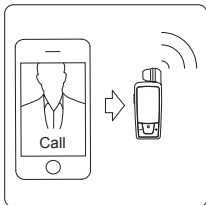


Ringer and Anti-Lost Function

Beeper has a built-in buzzer, which supports

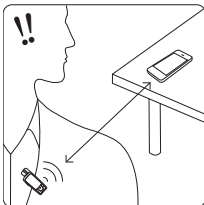
A. Ringer

Beeper will have “Beep” sound when you have an incoming call, to prevent missing any important call.



B. Anti-Lost

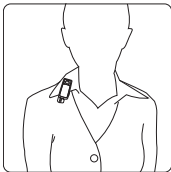
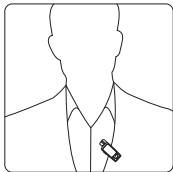
Beeper has an out of range alert, reminds you that your mobile phone is staying far away from you.



Wearing Style

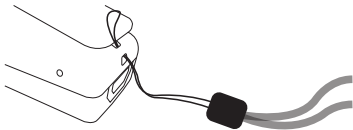
Beeper is designed,

A. to clip on your clothing, or

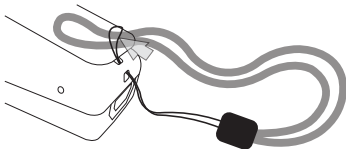


Wearing Style (cont'd)

B. fasten by a neck strap to wear comfortably and securely around your neck



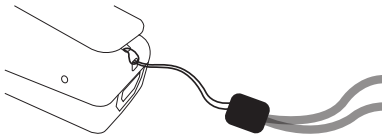
Step 1.



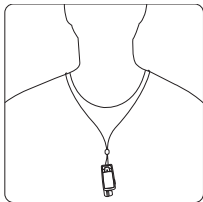
Step 2.

Wearing Style (cont'd)

B.



Done



Wearing Style (cont'd)

B.



To release the strap, just hold the strap by two hands and pull outwardly.
(See the picture)

- Use the provided neck strap only. Lower background noise requires you to put the microphone near your mouth.

Charging Your Headset

Before using your Beeper ("Headset") for the first time, please insert the charger into the power source and connect the other end to micro USB charging socket of headset to charge the battery fully.

Status	Status Indicator	Audio
1. Charging	Red light ON	
2. Fully charged	OFF	
3. Low battery	Red light for every 5 seconds	A short beep every 20 seconds
4. Out of battery	OFF	

- Use only the supplied charger for charging
- To extend the battery life, re-charging the battery every 6 months.
- Charging indication will be delayed in a few seconds if the headset has not been used for a long period of time.

Getting Started

Turning Your Headset On and Off:

A. Turning on

Press and hold the MFB until the status indicator flashes blue.

B. Turning off

Press and hold the MFB until the status indicator flashes red.

Pairing Your Headset with a Bluetooth® wireless technology enabled phone

1. Turn on the Bluetooth® function in the mobile phone.
2. Place the headset and the phone where they are visible, within arm's length from each other.
3. Ensure the headset is OFF.
4. To activate the headset's pairing mode, press and hold the MFB until the status indicator flashes blue and red alternately.
5. Search the headset, select "UA-06XB" and enter the passcode "0000". If your mobile phone supports Bluetooth v2.1 "Simple Pairing" function, no code is required.
6. When the pairing is complete, the headset's status indicator will flash blue.

Pairing Your Headset with Two Bluetooth® wireless technology enabled phone (Multi-point)

Beeper supports a Multi-point function to allow simultaneous pairing of the headset with two mobile phones.

1. Pair the headset with the first phone (follow the step in "Pairing Your Headset with a Bluetooth mobile phone").
 2. Turn off the headset and the first paired phone is then disconnected automatically.
 3. Pair the headset with the second phone (follow the step in "Pairing Your Headset with a Bluetooth mobile phone").
 4. Activate the Bluetooth connection with the headset and the first paired phone on the phone's menu.
- For some phones, you may need to manual press "connect" to connect the headset.
 - If the pairing cannot be completed within two minutes, the headset will automatically go to standby mode and then turn off after five minutes. Repeat steps to pair both devices again.

Reconnecting Your Headset

1. If the headset has powered off, it will be reconnected to the phone automatically after switching on the headset, if not, press MFB once to reconnect.
2. If the phone has powered off and headset is then disconnected you need to press MFB once to reconnect when phone turns on again. Otherwise, the headset will switch off.

Using Your Headset

Function	Button	Audio (Headset)	Audio (Speaker)	Status Indicator
Incoming Call		3 Beep for every 2 seconds	Ringtone	
Answer a Call	Press MFB once to accept.			
Answer a Second Call	1. Press MFB once to terminate the first call 2. Press MFB once to shift to second call			
Call Reject	Press the MFB twice			
• Reject a second call directly on the other connected phone during the call.				
End a Call	Press the MFB once			
Adjust Volume	Press the Volume +/- once to increase/decrease by 1 level (Total 8 levels)			

Using Your Headset (cont'd)

Function	Button	Audio (Headset)	Audio (Speaker)	Status Indicator
Voice Dialing	Press the MFB once		A short Beep	
<ul style="list-style-type: none"> When you hear a short beep, say the voice tag, and you must have the voice tag record on your mobile phone. Voice redialing is only allowed for those saved voice tag into the 1st connected phone if you have connected two mobile phones. 				
Last Number Redial	Press the MFB twice			
<ul style="list-style-type: none"> Redial the call from the 1st connected phone if two mobile phones are connected. 				
Reset / Remove the pairing history	Press and hold the MFB and Volume +			Red light flashes once
No network covered / Out of range alert			A short Beep	Blue light flashing 2 times for every 3 seconds
<ul style="list-style-type: none"> The headset will automatically reconnect within 15 minutes, otherwise it will off. If auto-connect is not supported, press the MFB once. 				

Using Your Headset (cont'd)

Function	Button	Audio (Headset)	Audio (Speaker)	Status Indicator
Call Transfer (from headset to mobile phone / or vice versa)	During a conversation, press the MFB twice			Blue light keeps flashing when a call is transferred from headset
Standby mode without mobile connection				Blue light flashing 2 times for every 3 seconds
Standby mode with mobile connection				Blue light flashing 1 time for every 10 seconds

• Beeper is designed to work with the mobile phones with Bluetooth Hands-free profiles (or Bluetooth devices), the compatibility of some features are not guaranteed for some phones in different operating system.

Troubleshooting

I cannot pair with my mobile phone

- Ensure your headset is power on and fully charged
- Ensure the Bluetooth setting is activated on your phone
- Ensure the headset is at pairing mode (flashes blue and red alternately)
- Ensure the headset is not out of range of your phone

If the above steps do not solve the problem, please turn off the headset and recharge the headset, and then try again.

I cannot hear the sound in my headset

- Ensure your headset is power on and fully charged
- Ensure your headset is paired and connected with your phone
- Ensure the conversation is not transferred to your phone
- Ensure the volume level is high enough

I cannot turn off the headset

Please press and hold the MFB for a longer time, otherwise, please recharge the headset for 2-3 seconds then disconnect the charger, the headset now turns off.

I cannot turn on the headset

Ensure your headset is power on and fully charged, otherwise, please charge the headset for 1-1.5 hours, and then turn on again.

Troubleshooting (cont'd)

My phone cannot be auto-reconnected with the headset

- Manually connect the headset from your mobile phone
- Turn off the mobile then turn on again
- Turn off the headset then turn on again

If the above steps do not solve the problem, turn off the headset and reset it, pairing the headset again.

Can I switch off the "Beep" Sound?

To guarantee the Anti-Lost function, the "Beep" sound cannot turn it off.

I hear a short "Beep" sound suddenly, what happen?

Anti-Lost alert to help you locate your mobile phone is far away from you.

I hear a "Beep" sound during the call, what happen?

Low battery alert, please charge your headset.

I hear some noise during the call, why?

There is an obstruction between the headset and your mobile, please remove it. Or please put your mobile on the table, don't hold it on hand.

Safety Precautions

1. Unintentional depression of the retractable button could result in injury from the force of the earpiece cord retraction.
2. Be careful when retracting the length of the earphone. Keep a safe distance between your face and the headset.
3. If you must use the headset while driving, ensure your attention is fully focused on driving safety. Be a responsible driver and abide by the local laws.
4. Place in children's unreachable area, never allows them to play with the headset. Small parts pose as a choking hazard.
5. Obey all designated areas such as hospitals, electronically restrictive and hazardous environment that require an electrical device be switched off.
6. Turn off your headset prior to boarding on an aircraft. Do not use it while being asked by the flight attendant.
7. Never mount or store your headset over any air bag deployment area as serious injury could result upon deployment.
8. Do not attempt to disassemble the headset as it does not contain serviceable components.
9. Headset builds with battery inside and should dispose of it according to local regulations, not as a household waste.

Maintenance

1. Do not yank or forcibly pull the earphone cord.
2. Consider turning your headset off before placing it in your pocket or bag.
If the MFB is accidentally pushed, your mobile phone may place an unintended call.
3. Do not expose the headset to liquid or humidity, as it is not waterproof.
4. Do not use abrasive cleaning solvents to clean the headset.
5. Do not expose the headset to extremely high or low temperatures.
6. Do not expose your headset to contact with sharp objects as this will cause scratches and damage.
7. Do not stick anything inside the headset as this may damage internal components.
8. Do not attempt to replace the headset's battery. It is built-in and is not removable.
9. Use only the manufacturer supplied charger when charging the headset.
10. Do not disassemble the charger as it may expose you to dangerous voltages or other risks. Incorrect reassembly can cause electric shock when the headset is subsequently used.



FC CE BQB

Made in P.R.C

Keep dry. Precipitation, humidity, and liquids, contain minerals that will corrode electronic circuits.

Do not use or store in dusty, dirty areas.

Do not store in hot areas. High temperatures can shorten the life of electronic devices and warp or melt certain plastics.

Do not store in very cold areas. Moisture can form inside the case, which may damage electronic circuit boards.

Do not attempt to open the case. Non-expert handling of the device may damage the system.

Avoid dropping and strong impact.

Do not change or modification. It is not expressly approved by the party responsible for compliance could void the user's authority to operate the equipment.

FCC ID: WD31516

This device complies with Part 15 of the FCC Rules. Operation is subject to the following two conditions:

- (1) this device may not cause harmful interference, and
- (2) this device must accept any interference received, including interference that may cause undesired operation.