

Source Tagging Tester

User Guide

Version 1.0

Published by:
Checkpoint Systems Inc.
101 Wolf Drive
Thorofare, NJ 08086

This manual refers to the Source Tagging Tester unit, Version 1.0.

Document revision information

Source Tagging Tester

Part Number: 7413286

Rev	Description	Date	Author
1.0	Initial Draft	11/10/2005	M. Reeves

Trademarks Copyright and Warranty Information

Checkpoint Systems, Inc. are registered trademarks of Checkpoint Systems, Inc.

Microsoft, Windows, and Windows XP are either registered trademarks or trademarks of Microsoft Corporation in the United States

Other product and company names herein may be trademarks of their respective owners.

The information in this manual is subject to change without notice.

Because of the changing nature of this product information presented in the Installation Manual, Checkpoint Systems, Inc. is not liable for any omissions, misstatements, or other errors of information.

The information presented in the Installation Manual may not be copied, used or disclosed to others for the purpose of procurement or manufacturing without the written permission of Checkpoint Systems, Inc. This manual and the products discussed in this manual are the exclusive property of Checkpoint Systems Inc. Copyright laws of the United States protect all information and products.

Copyright © 2005 by Checkpoint Systems, Inc. All rights reserved.

Contact Information

USA

Checkpoint Systems, Inc.
101 Wolf Drive
Thorofare, NJ 08086 USA
<http://www.checkpt.com>
Technical Assistance/Service Requests: 800-253-7580
FAX: 856-384-2328

Europe

Checkpoint Systems International GmbH
Von-Humboldt-Strasse 10
Heppenheim
Hessen
64 646
Germany
+49 6252 798 300

Document Conventions



Warning

This is a Warning icon. When it appears, the corresponding text indicates a cautionary statement which you must abide by.



Caution

This is a Caution icon. When it appears, the corresponding text indicates a cautionary statement which you must abide by.



Note

This is a Tip icon. When it appears, the corresponding text indicates a helpful note or tip when using the feature.

The following usage conventions are used throughout the manual.

Button Name - This describes a button or selection on the screen. For example, the <DONE> button is represented in this document as **Done**.

Key Name - This describes a keystroke on a keyboard. For example **Ctrl** represents the control key.

Regulatory Statement

Important Information to our Users in North America

FCC Regulatory Compliance Statement

Checkpoint Systems, Inc. offers certain Electronic Article Surveillance (EAS) products that have been FCC certified or verified to 47 CFR Part 15, Subparts B/C and/or 47 CFR Part 18. Appropriately, one of the following labels will apply to the approval:

NOTE: This equipment has been tested and found to comply with the limits for a Class A digital device, pursuant to part 15 of the FCC Rules. These limits are designed to provide reasonable protection against harmful interference when the equipment is operated in a commercial environment. This equipment generates, uses, and can radiate radio frequency energy and, if not installed and used in accordance with the instruction manual, may cause harmful interference to radio communications. Operation of this equipment in a residential area is likely to cause harmful interference in which case the user will be required to correct the interference at his own expense.

- OR -

This device complies with part 15 of the FCC Rules. Operation is subject to the following two conditions: (1) This device may not cause harmful interference, and (2) this device must accept any interference received, including interference that may cause undesired operation.

- OR -

NOTE: This equipment has been tested and found to comply with the limits for a miscellaneous type ISM device, pursuant to part 18 of the FCC Rules. This equipment generates, uses, and can radiate radio frequency energy and, if not installed and used in accordance with the instruction manual, may cause harmful interference to radio communications. However, there is no guarantee that interference will not occur in a particular installation. If this equipment does cause harmful interference to radio communications reception, which can be determined by turning the equipment off and on, please contact Checkpoint Systems, Inc. at (800) 257-5540 for further assistance.

Equipment Safety Compliance Statement

WARNING: Changes or modifications to Checkpoint's EAS equipment not expressly approved by the party responsible for assuring compliance could void the user's authority to operate the equipment in a safe or otherwise regulatory compliant manner.

Important Information to our Users in Europe

CE Compliance Statement

Where applicable, Checkpoint Systems, Inc. offers certain Electronic Article Surveillance (EAS) products that have CE Declarations of Conformity to Council Directive(s) EMC 89/336/EEC, LVD 73/23/EEC, and R&TTE 99/5/EC Radio and Telecommunications Terminal Equipment, as amended by 92/31/EEC and 93/68/EEC.

System Electromagnetic Compatibility (EMC), has been tested and notified through Spectrum Management Authorities using accredited laboratories and, in a few cases, EC type examination certified through a Notified Body using Competent Body laboratories in Europe, whereby, conformity is declared to voluntary accepted European Telecommunications Standards Institute (ETSI) standards EN 301 489 and EN 300 330. In other cases, conformity is declared to the generic emission and immunity standards EN 50081-1 / EN 55022 / EN 50082-1 and EN 55024.



NOTE: Certain Checkpoint EAS equipment has been tested and found to conform with the CE emission and immunity requirements in Europe. This equipment generates, uses, and can radiate radio frequency energy and, if not installed and used in accordance with the instruction manual, may cause harmful interference to radio communications. Under unusual circumstances, interference from external sources may temporarily degrade the system performance. However, there is no guarantee that interference will not occur in a particular installation. If this equipment experiences frequent interference from external sources or does cause harmful interference to radio communications reception, which can be determined by turning the equipment off and on, please contact a Checkpoint representative for further assistance.

Equipment Safety Compliance Statement

Checkpoint's Electronic Article Surveillance (EAS) products have been designed for safeness during normal use and, where applicable, certain components of the system or accessory sub-assemblies have been declared safe according to the European Low Voltage Directive (LVD) by being certified, listed, or recognized in accordance with one or more of the following European safety standards; EN 60950-1 (Amendments 1 & 2), EN60742, and EN50364. Additional approvals may be pending.

WARNING: Changes or modifications to Checkpoint's EAS equipment not expressly approved by the party responsible for assuring compliance could void the user's authority to operate the equipment in a safe or otherwise regulatory compliant manner.

Table of Contents

Contact Information.....	i-iii
Document Conventions.....	i-iii
Regulatory Statement.....	i-iv
Introduction.....	1-1
Sample Layout Diagram.....	1-2
Using Source Tagging Tester.....	2-3
Initial Configuration of STT Software.....	2-3
Tag Testing Line Preparation.....	2-6
Fixed Tag Testing Amount.....	2-6
Unlimited Tag Testing Amount.....	2-7
Reports.....	3-9
Report Procedure	3-9
Create a Report	3-9
Email the Report	3-10
Print the Report.....	3-11
Sample Report	3-12

INTRODUCTION

The Checkpoint Source Tagging Tester is designed to help Source Tagging Customers test and verify Checkpoint labels in real time. The Source Tagging Tester tests every series of Checkpoint labels and comes equipped with a counter mechanism that records the number of good, bad, and total Checkpoint labels run on the production line.

The customer records the number of good, bad, and total number of Checkpoint labels before resetting the counters. Each individual counter comes equipped with a manual hard reset button, enabling the customer to reset the counters.

This user guide contains the following information:

- Introduction
- Configuring and Using the Source Tagging Tester
- Report Generation

Sample Layout Diagram

The following diagram illustrates a sample installation of the Source Tagging Tester. Your installation is entirely custom and dependent upon your individual requirements.

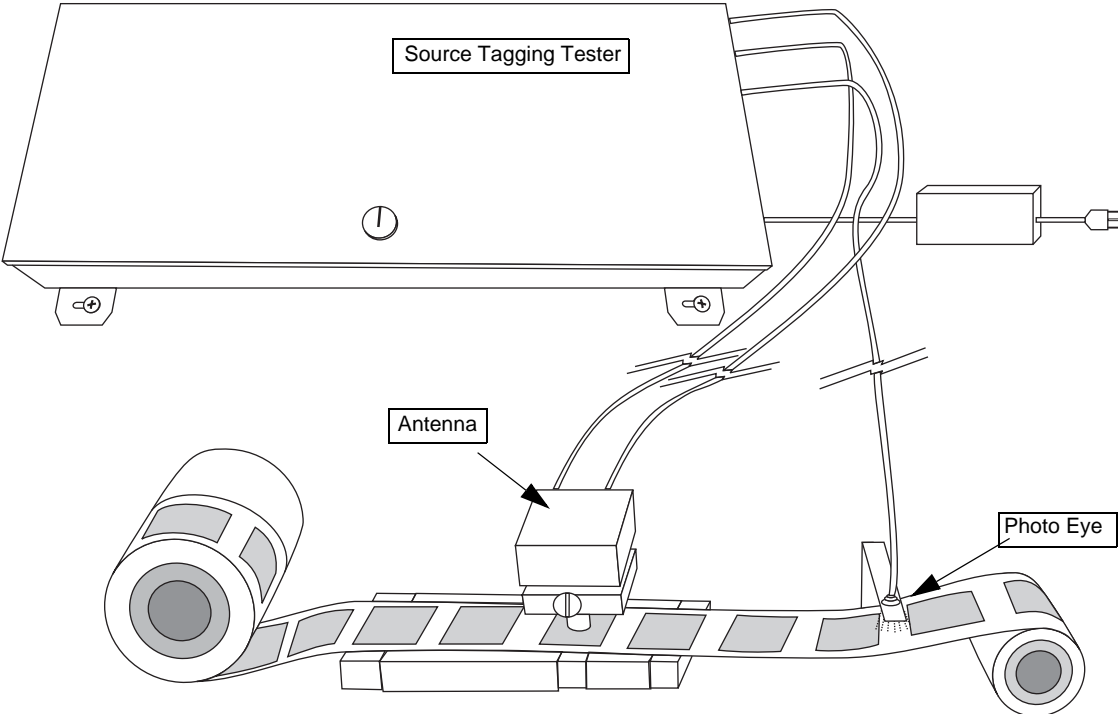


Figure 1.1 Sample Layout

USING SOURCE TAGGING TESTER

This chapter instructs how to use the Source Tagging Tester software.

Initial Configuration of STT Software

Before testing starts, the software must be configured for use.

- 1 Launch the Source Tagging Tester by double-clicking the **Tag Tester icon** on the desktop.
- 2 Click **File > User Preferences** to access the User Preferences.

User Preferences			
General			
Time Format:	Standard		
Date Format:	mm/dd/yyyy		
No. of Units:	4		
SMTP Settings			
SMTP Host:			
SMTP Port:	25		
Account Settings			
Email Address:			
Shifts			
1	From	6:01:00 AM	To 2:00:00 PM
2	From	2:01:00 PM	To 10:00:00 PM
<input checked="" type="checkbox"/>	3	From 10:01:00 PM	To 6:00:00 AM
Production			
Target Tag Count:	1000		
Save and Exit		Exit	

Figure 2.1 User Preferences

- 3 If not using email, the SMTP and Email fields can be ignored. Type in the following information to customize the software for the production line:

Table 2.1 User Preferences

Field	Description
Time Format	Select either Standard or Military time.
Date Format	Select the type of date format.
No. of Units	Select the number of production lines to be monitored.
SMTP Host	If necessary, enter the SMTP Host information. Contact IT for the information.
SMTP Port	If necessary, enter the SMTP Port information. Contact IT for the information.
Email Address	If necessary, type the email address to which the program sends results.
Shifts	Select the time for each shift. You cannot leave more than a 10 minute interval between each shift.
Target Tag Count	Type the number of tags that are to be tested for each run. Once the count has reached the limit specified here, the program stops counting.

- 4 Once complete, click **Save and Exit** to save the information. Otherwise, click Exit to exit without saving your changes.
- 5 Next, click **File > Yield Settings** to access Yield Settings.

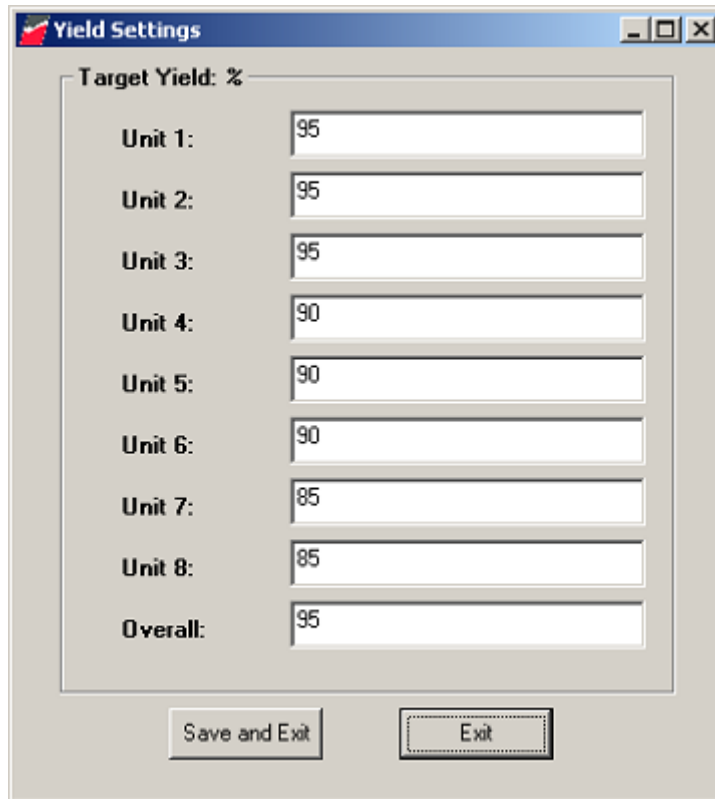


Figure 2.2 Yield Settings

The yield is the amount of good tags you wish to achieve for each line and each roll. For example, in Unit 1 above, the program is set for 95% yield, which only allows for 5% of tags to fail.

- 6 Type the **yield** you wish to maintain for each unit you are programming. If not using all units (as programmed in step 3), leave the default value in the field.
- 7 In the Overall field, type the **final successful yield** for all of the units.
- 8 Once complete, click **Save and Exit** to save the information. Otherwise, click Exit to exit without saving your changes.
- 9 Next, click **File > Yield COM Setup** to access COM Port Setup.



Figure 2.3 COM Port Setup



Note: Multiple COM Ports refers to the usage of an RS232/COM port expansion unit.

- 10 Select only the **COM ports** you will use for tag testing. Otherwise, leave the checkboxes blank. The COM ports *must* be selected sequentially and COM1 must always be selected, as that is the computer itself. COM2-COM8 refers to the COM port hub.
- 11 Once complete, click **Save and Exit** to save the information. Otherwise, click Exit to exit without saving your changes.

Tag Testing Line Preparation

This procedure assumes that all the initial configuration of the software has been completed. If not, see [“Initial Configuration of STT Software”](#) on page 2-3 for details.

Before configuring the software, the tags must be ready to be run on the production line. Follow your company’s procedures for the correct installation method.

Fixed Tag Testing Amount

This procedure explains how to configure the STT program for a finite amount of tags. Choose this option when testing a set number of tags for a particular product code, for example 1,000 tags for a line of shirts. If you are testing an unlimited amount of tags, see [“Unlimited Tag Testing Amount”](#) on page 2-7.

- 1 Launch the Source Tagging Tester by double-clicking the **Tag Tester icon** on the desktop.
- 2 If you need to customize the Yield, see [page 2-4](#) for details on how to adjust the settings.
- 3 Click **Shift**. The Shift window displays.

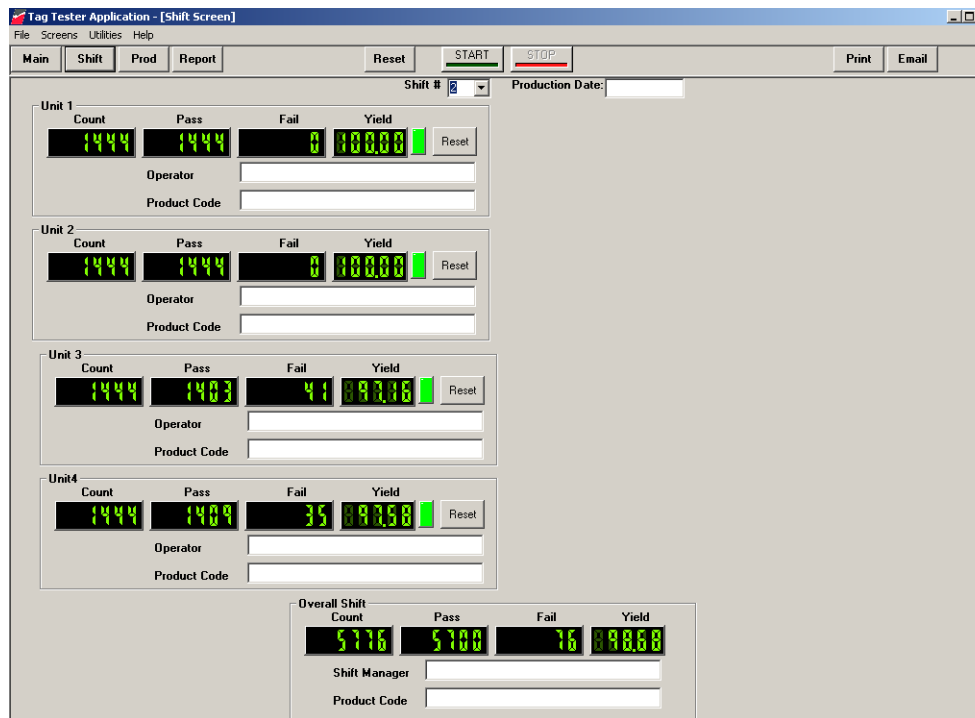


Figure 2.4 Shift Window

The Shift window allows you to customize each production line to match the name of the operator and the Product Code of the labels. The Shift # is automatically determined based on the User Preference and the computer’s clock.

- 4 Type the **Production Date** to be run.
- 5 For each Unit you are testing, type the **name of the operator** of the line and the applicable **Product Code**.

- 6 If necessary, type the name of the **Shift Manager** for the Overall Shift.
- 7 Click **Prod.** The Production window displays.

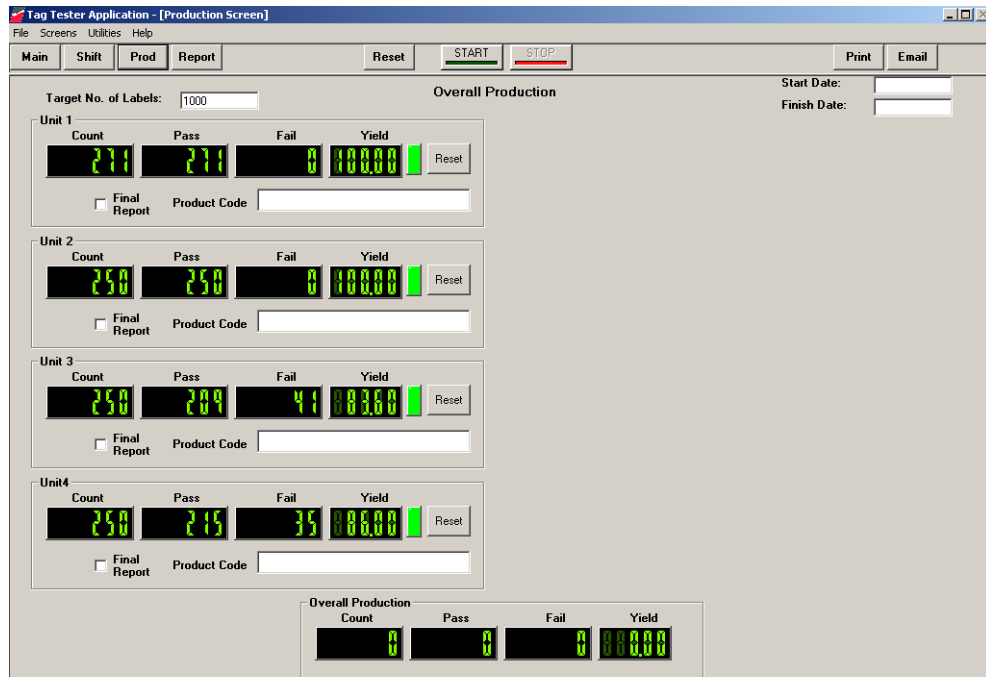


Figure 2.5 Production Window

The Production window allows you to enter a preset amount of labels to test. The numbers that appear here can appear in the Final Report.

- 8 Type the **Start** and **Finish** dates.
- 9 Type the **total amount of labels** for all units to be tested in the *Target No. of Labels* field.
- 10 For each line to be tested, type the Product Code for each Unit.
- 11 Click **Start** to begin testing.
- 12 Start the **tag testing line**. The STT program counts the tags for each Unit selected.
- 13 When the counting is complete, click **Stop**. See [“Create a Report” on page 3-9](#) for details on how to save the information.

Unlimited Tag Testing Amount

This procedure explains how to configure the STT program for an unlimited amount of tags. Choose this option testing many rolls of tags. If you are testing a limited amount of tags, see [“Fixed Tag Testing Amount” on page 2-6](#).

- 1 Launch the Source Tagging Tester by double-clicking the **Tag Tester icon** on the desktop.
- 2 If you need to customize the Yield, see [page 2-4](#) for details on how to adjust the settings.

3 Click **Shift**. The Shift window displays.

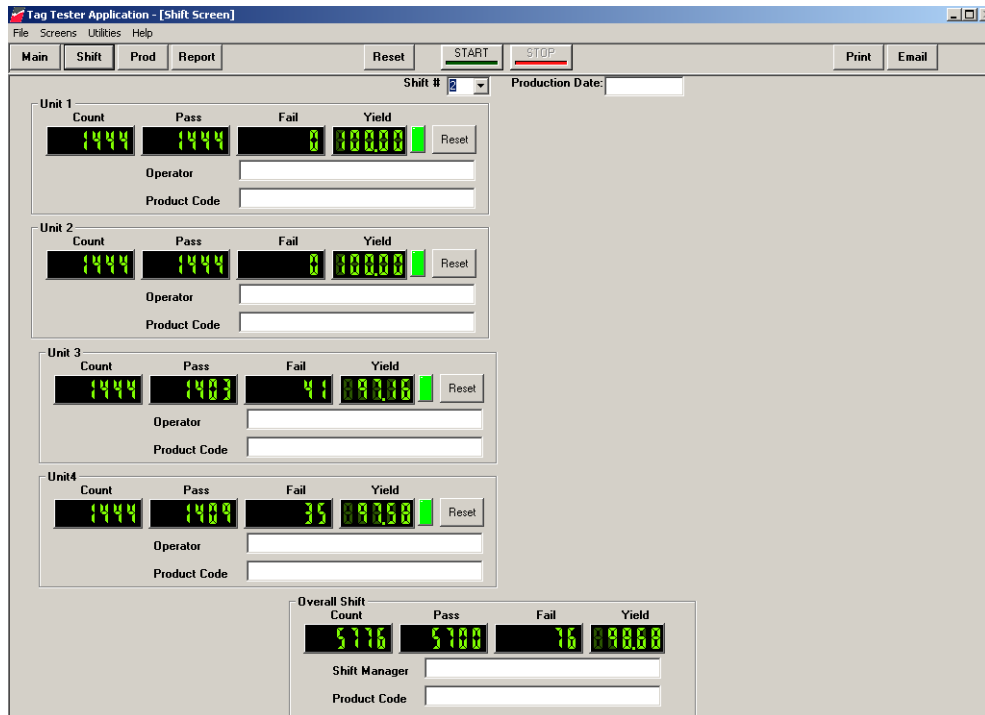


Figure 2.6 Shift Window

The Shift window allows you to customize each production line to match the name of the operator and the Product Code of the labels. Only those COM ports you selected in [“Initial Configuration of STT Software” on page 2-3](#) will appear here. The Shift # is automatically determined based on the User Preference and the computer’s clock.

- 4 Type the **Production Date** to be run.
- 5 For each Unit you are testing, type the **name of the operator** of the line and the applicable **Product Code**.
- 6 If necessary, type the name of the **Shift Manager** for the Overall Shift.
- 7 Click **Start** to begin testing.
- 8 Start the tag production line. The STT program counts the tags for each Unit selected.
- 9 When the counting is complete, click **Stop**. See [“Create a Report” on page 3-9](#) for details on how to save the information.

REPORTS

This chapter provides a sample Report which can be used to record tag counts.

Report Procedure

Prior to running each roll of tags, record the number of bad tags per roll, which can be found on the inside of the tag core. Then at the end of each roll of tags record the number of good, bad, and total tags run.

Create a Report

You can archive your testing data in either print or electronic format.

- 1 From the Production screen, select only those Units (by selecting **Final Report**) whose numbers you want to appear in the Report.

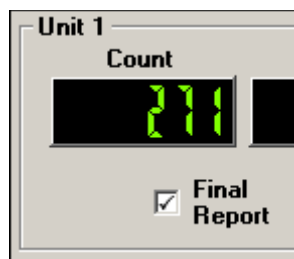


Figure 3.1 Final Report Selected

This can be changed as needed as well. For example, if you ran all 8 units with two different types of tags, you can produce one report for units 1, 2, 3, and 4 and another for report for units 5, 6, 7, and 8. When you produce the Report, you can select either group as needed.

- 2 After testing is complete, click **Report**.

Click box to browse logo.

Company Name: _____
Factory Identification: _____
Factory Identification: _____
Factory Identification: _____
Production Start Date: _____
Production Finished Date: _____
Product Code: _____

Vendor

Product Description: _____
Vendor Name: _____
Street Address: _____
City: _____ State: _____ Zip: _____
Country: _____
Ship Date: _____
Total Labels Shipped: 0
Total Functional Labels: 0
Total Non-Functional Labels: 0
Overall Yield: 0

Figure 3.2 Report Window

- 3 Type in the **information** necessary for your report. The last four fields are automatically filled with the results from the Production page.
- 4 Click either **Print** or **Email**, depending upon how you want to save the information. See “[Email the Report](#)” on page 3-10 or “[Print the Report](#)” on page 3-11 for details.

Email the Report

This option requires that the email settings in User Preferences (configured on [page 2-3](#)) are correctly configured before you can use this option.

- 1 If you clicked Email, the Email Recipients dialog box appears.

Recipients

TO: _____
CC: _____
BCC: _____

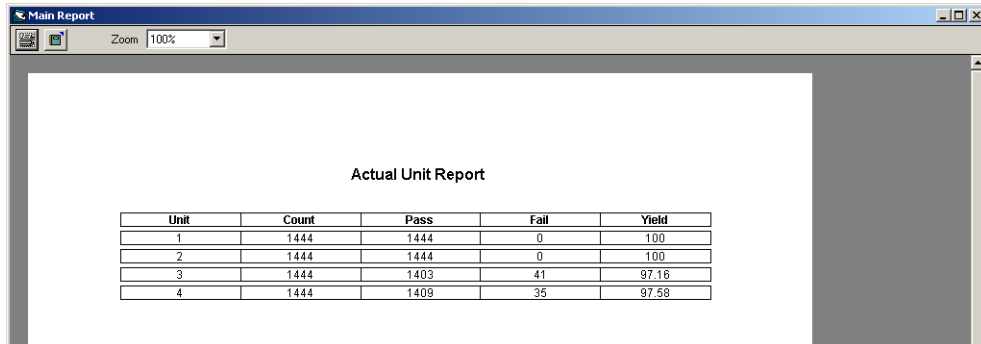
Email Cancel

Figure 3.3 Email Dialog Box

- 2 Type in the necessary **email address** and click **Email**. The report is delivered to the email address specified.

Print the Report



- 1 If you clicked Print, a sample of the Report displays.



The screenshot shows a window titled 'Main Report' with a zoom level of 100%. The main content area displays the following table:

Unit	Count	Pass	Fail	Yield
1	1444	1444	0	100
2	1444	1444	0	100
3	1444	1403	41	97.16
4	1444	1409	35	97.58

Figure 3.4 Report Sample

- 2 At the top left, click either the **Print**  or **Export**  button.
- 3 If you clicked Print, the Report is sent to the printer.
- 4 If you clicked Export, the Export dialog box appears.

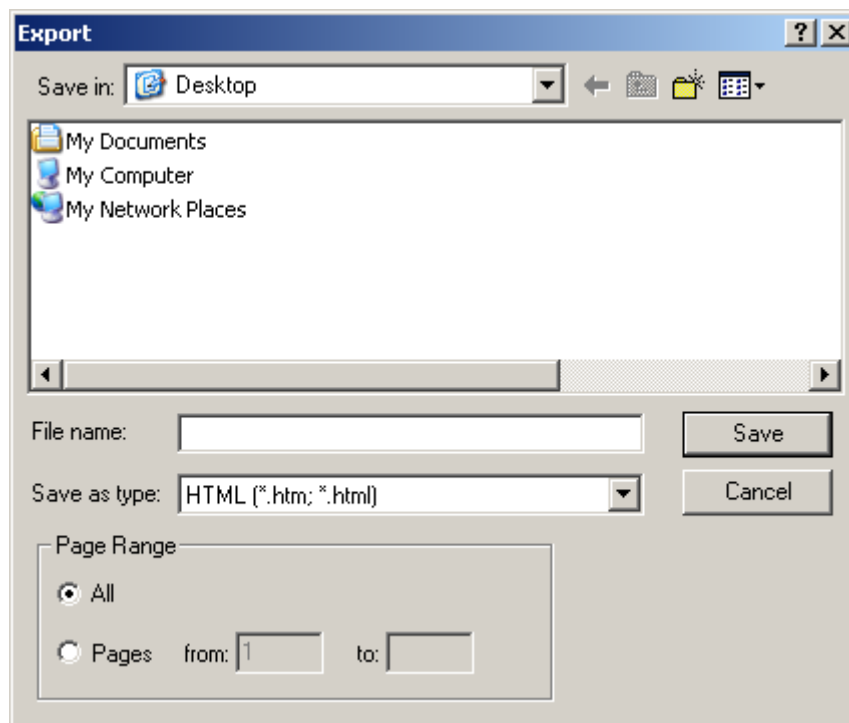


Figure 3.5 Export Dialog Box

- 5 Select a **destination** for the file, type a **file name**, and select the **file type** (HTML or TXT) for the Report and click **Save**.

