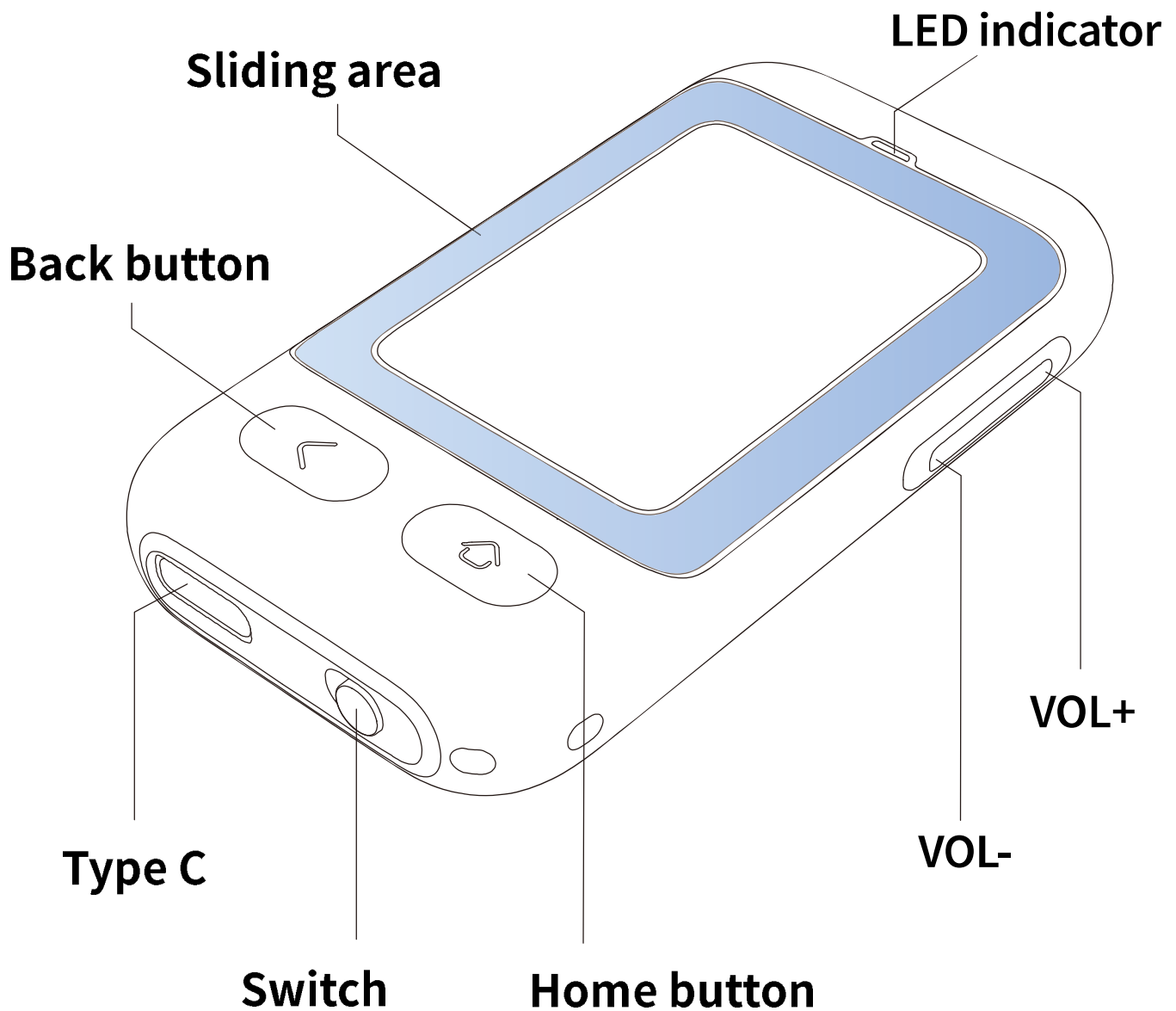
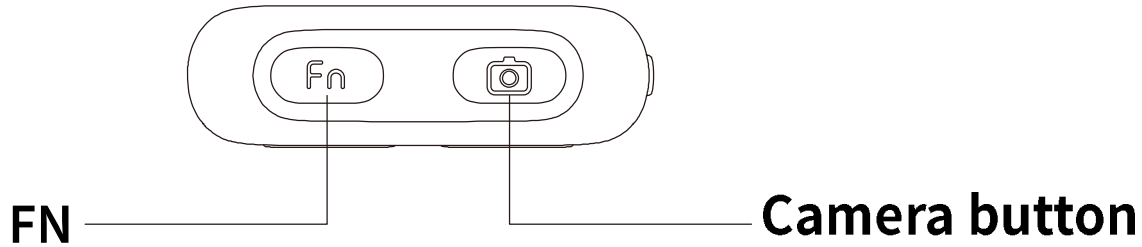


# **CheerTok Air**

# **User Manual**

(Dual key version)

# Basic Operations



# **Turn ON/OFF**

Turn switch button to the left will power on device, turn to the right will shut down.

## **Connection**

When device turned on, blue LED will flash regularly, and "CheerTok Air" can be found by your host device. Once get paired, it will connect back to the host automatically next time.

## **Re-pairing**

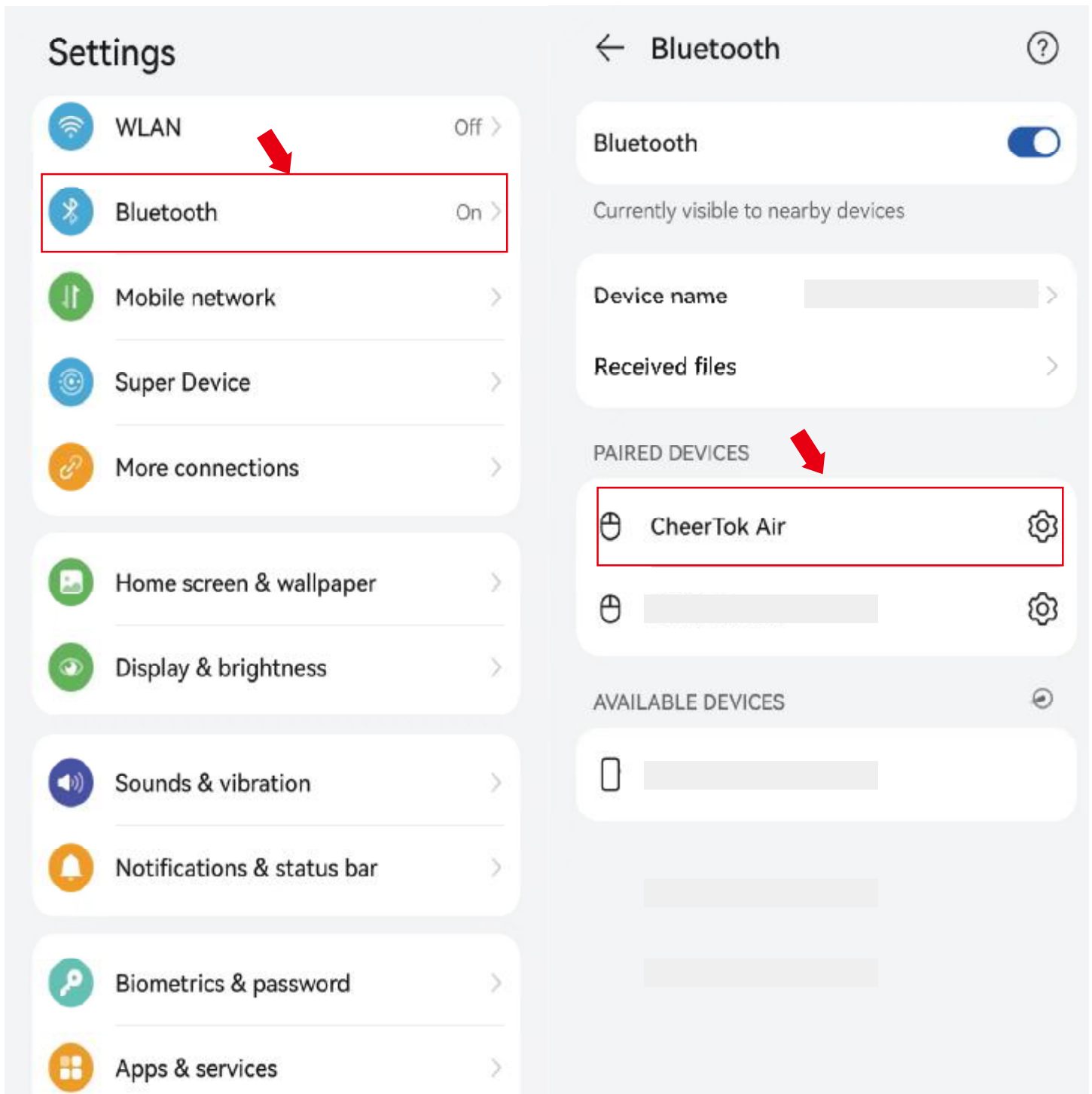
Long press camera button then turn on, device will reset and can be found by new hosts.

# Mode Switch

Press the VOL- button and turn on the device to switch between normal mode (CheerTok Air) and Android special mode (CheerTok Special). The Android special mode operates more smoothly under the Android system. However, due to system limitations, when the video is played horizontally, the pointer can only reach 2/3 of the screen. Switching back to the normal mode can solve this problem.

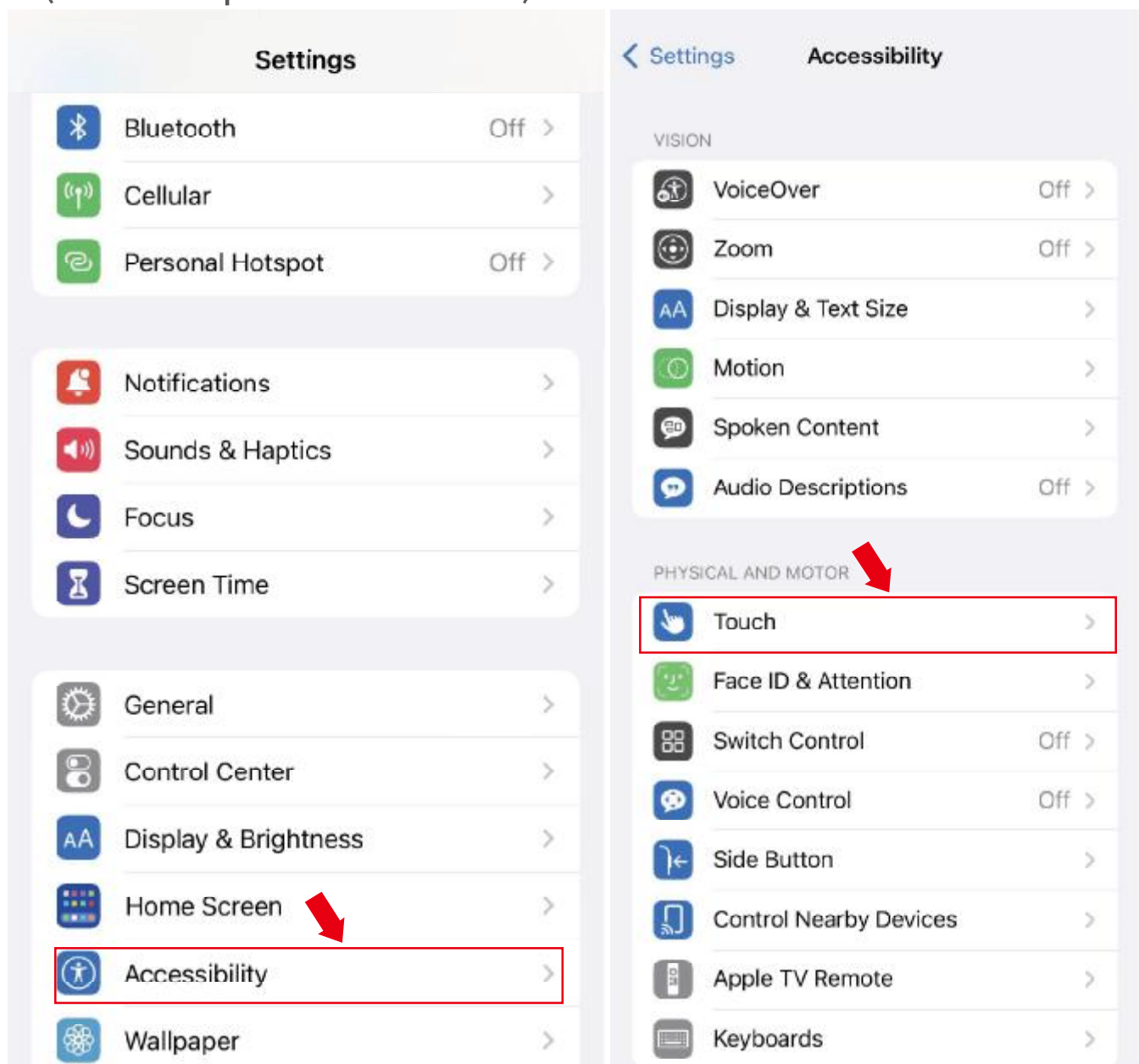
# Connect to Android

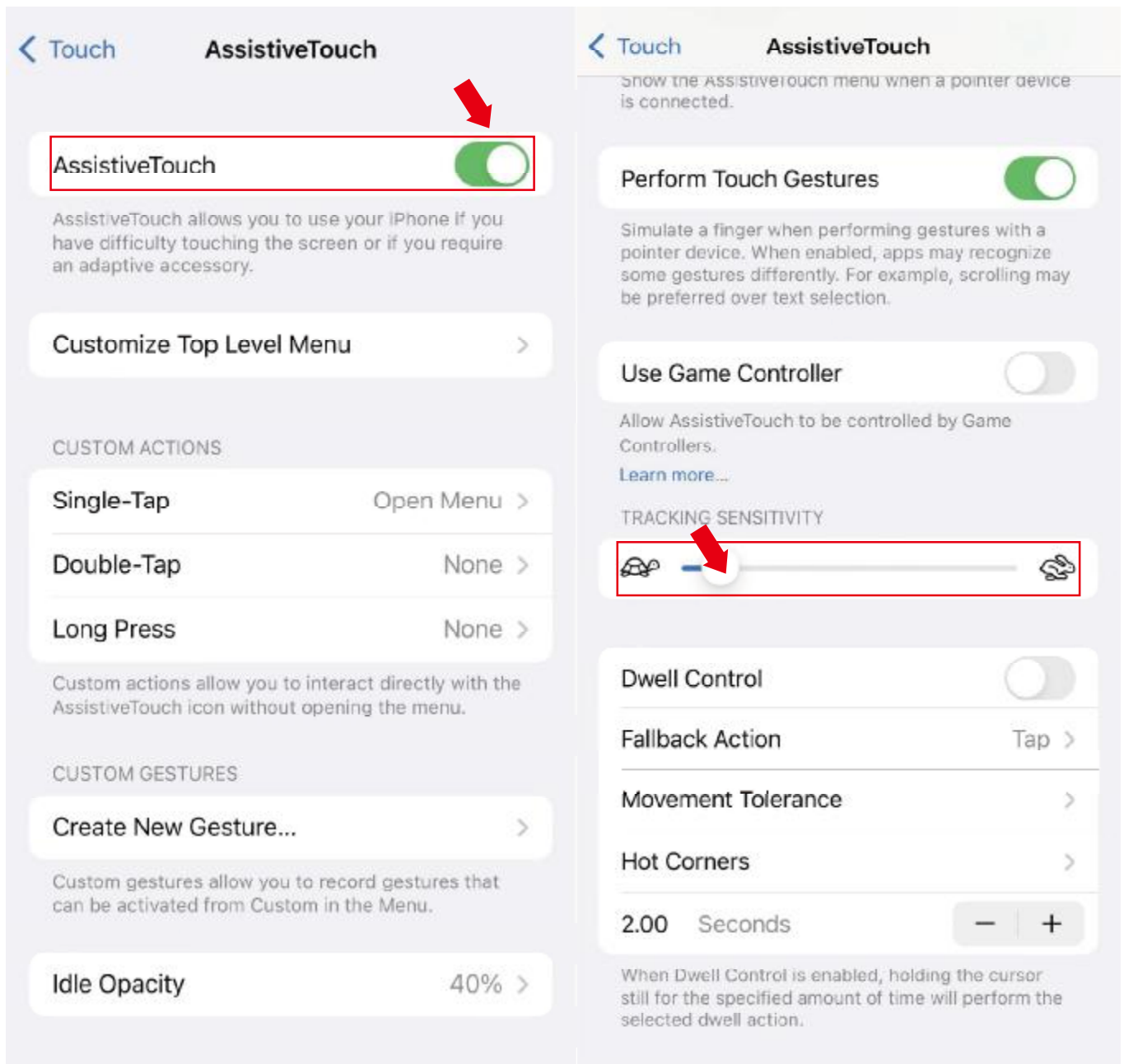
Open "Settings" -> "Bluetooth" -> turn on Bluetooth and search, you can find the CheerTok Air device, click to connect.



# Connect to iPad/iPhone

Open "Settings" -> "Bluetooth" -> search for devices to connect to "CheerTok Air". When connected, if the mouse pointer is not displayed, you can turn on the cursor by opening "Settings" -> "Accessibility" -> "Touch" -> "AssistiveTouch" (see the picture below).





## Note

To ensure a good user experience  
Be sure to adjust the tracking sensitivity

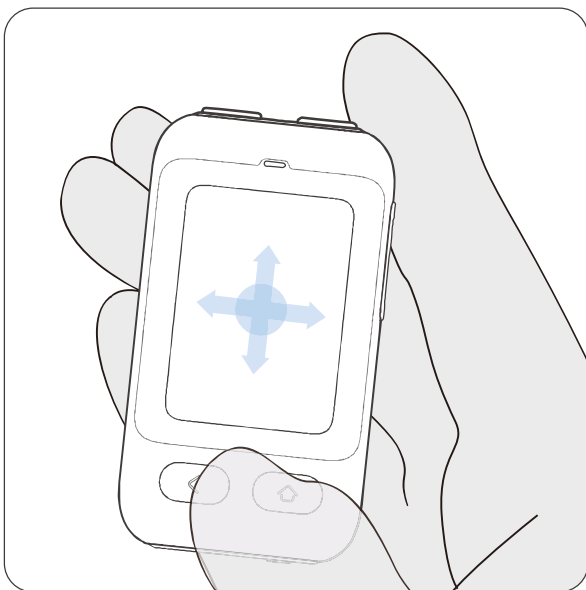
# Touchpad operations

## ① Move within touchpad

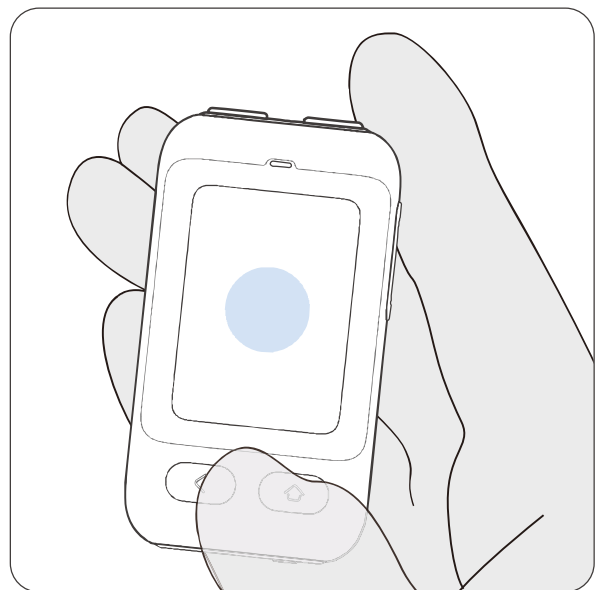
Cursor moving

## ② Click on the touchpad

Clicking on the screen



①



②

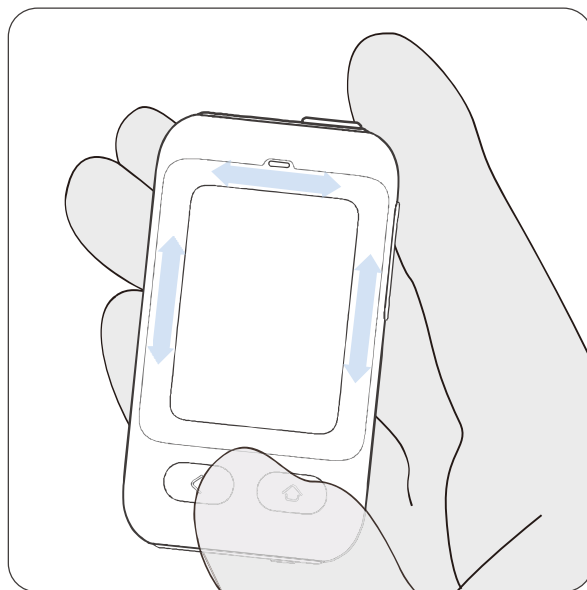


### ③ **Slide on vertical bar**

Page sliding up and down /  
Short video switch up and down

### ④ **Slide on top bar**

Screen switch left/right



③ ④

# Buttons function

## **VOL+/-**

VOL+/- button to adjust the volume

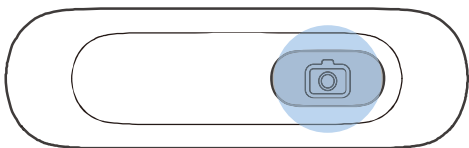
## **Back button**

Short press: return to the previous page,  
or exit the camera mode

## **Home button**

Short press: return to the home page

## **Camera button**

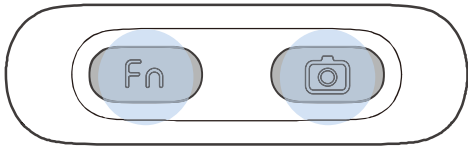


Click Camera button/VOL+/- : take photo

# Record/Play Shortcuts

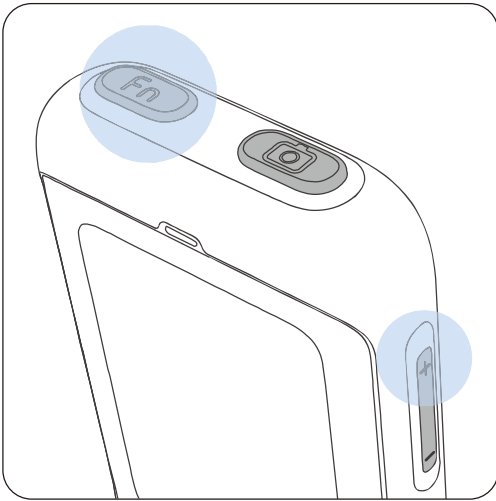
- ① **Start recording**  
Long press Fn button until green light on
- ② **Recording gestures**  
Touch, buttons, screenshots, etc.
- ③ **Stop recording**  
Tap Fn key, then green light turns off
- ① **Playing**  
Single playback (Tap Fn key, the green light flashes quickly)  
Loop playing (double click Fn key, the green light blinks slowly)
- ② **End playing**  
Tap Fn key, the green light goes off

# Music control



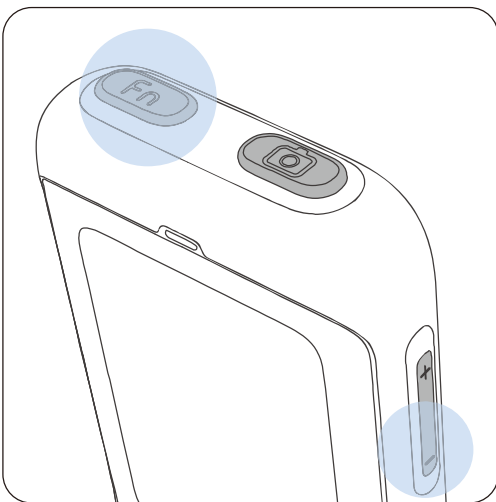
**Fn+Camera button:**

play/pause music



**Fn+VOL+:**

Previous song

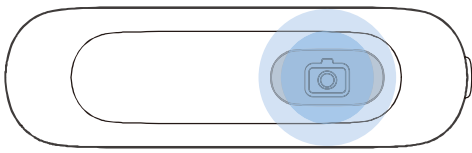


**Fn + VOL-:**

next song

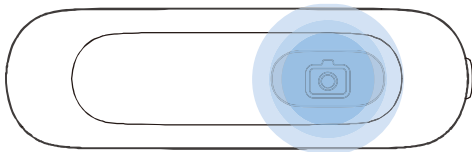
# Explorer Edition Features

Below features are not supported by  
iOS or some Android devices



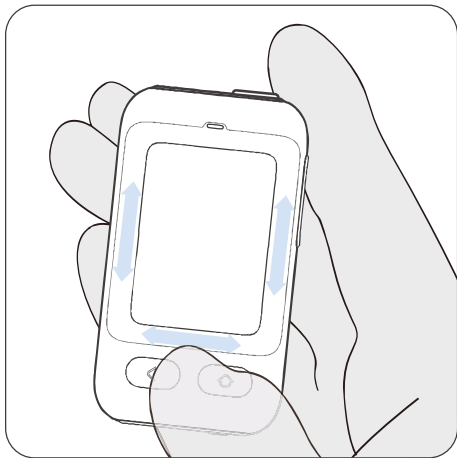
## **Double-click:**

Wake up camera; switch between photo/video mode. Will enter camera mode, purple LED on.



## **Triple-click:**

switch between front/main



## **In camera mode,**

slide the vertical bar will adjust the focal length

## **When playing Tiktok,**

slide bottom bar will drag video progress bar

# Cursor Reposition

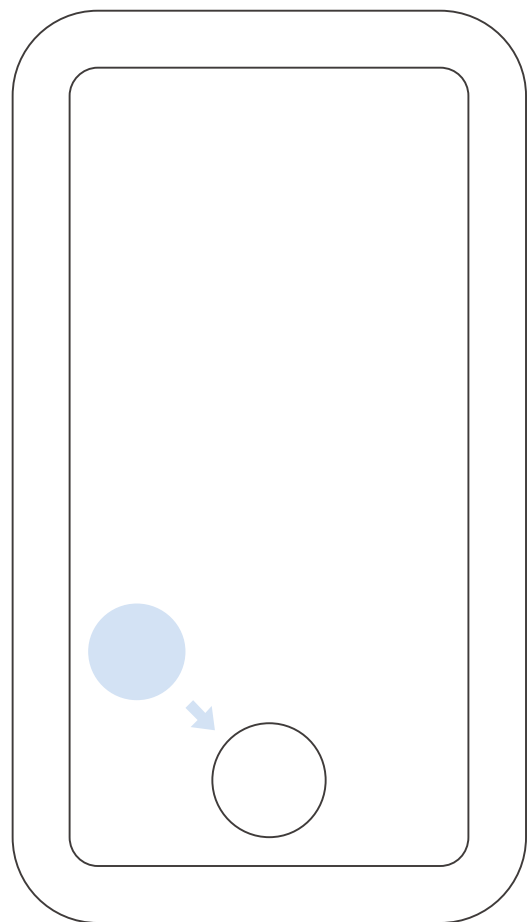
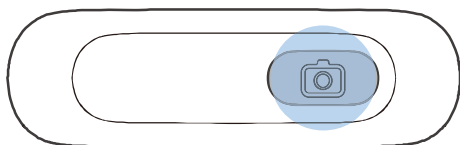
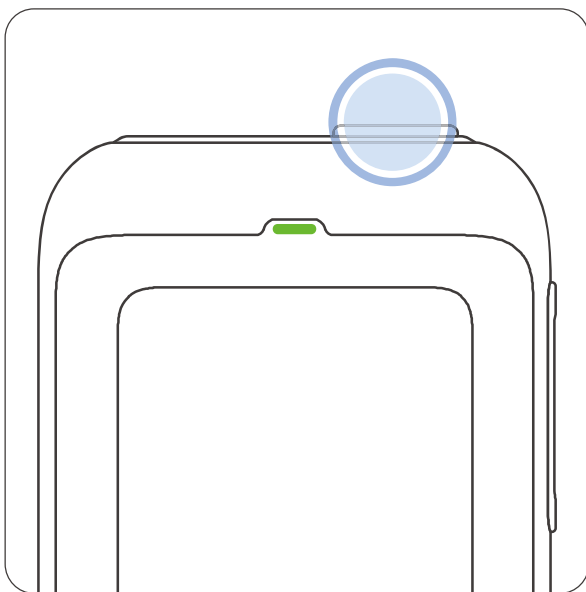
(Only available in Android special mode)

Long press camera button till LED turns green.

Move cursor to the target position with camera button pressed.

Release camera button to complete cursor reposition.

Cursor will click on the new position when camera button pressed.



# Product parameters

Project	Specification
Product name	CheerTok Air
Product model	CHP03
Weight	23 g
Input Voltage	5V
Battery Life	20+ day
Battery Capacity	200 mA
Charging Duration	1.5 h
Dimensions	69.5×38.5×11.5 mm
Bluetooth version	BLE 5.0
Operating environment	-10°C ~ 40°C (14°F ~104°F )
Compatibility	iOS 14 or above, Android 8 or above

FCC Warning Statement:

This equipment has been tested and found to comply with the limits for a Class B digital device, pursuant to part 15 of the FCC Rules. These limits are designed to provide reasonable protection against harmful interference in a residential installation. This equipment generates, uses and can radiate radio frequency energy and, if not installed and used in accordance with the instructions, may cause harmful interference to radio communications. However, there is no guarantee that interference will not occur in a particular installation. If this equipment does cause harmful interference to radio or television reception, which can be determined by turning the equipment off and on, the user is encouraged to try to correct the interference by one or more of the following measures:

- Reorient or relocate the receiving antenna.
- Increase the separation between the equipment and receiver.
- Connect the equipment into an outlet on a circuit different from that to which the receiver is connected.
- Consult the dealer or an experienced radio/TV technician for help.

Caution: Any changes or modifications to this device not explicitly approved by manufacturer could void your authority to operate this equipment.

This device complies with part 15 of the FCC Rules. Operation is subject to the following two conditions: (1) This device may not cause harmful interference, and (2) this device must accept any interference received, including interference that may cause undesired operation.

The device has been evaluated to meet general RF exposure requirement.