

# **Illustration of Screen Mirroring Function Operation manual**

---

### ❖ Requirements for handheld devices systems

iOS	iOS 7 and above, iPhone4+,iPad2+,iPad4+
Android	Android 4.2 and above, and has 1GB storage at least.

#### 1. Projector operation

Open the projector, press "source" on the remote, then it shows "Input Source" option on the projection image. Select the input method as "Screen Mirroring", then press "OK" to enter.



---

## 2. Wireless display

### 2.1 For iOS device.

2.1.1 Find your iOS device's WiFi setting, search and connect to the device SSID, which is shown on the top center of projection image. (For example "Device: RKcast-2918FC", Default password "PIN 12345678")

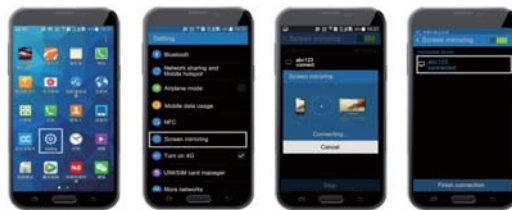
2.1.2 iOS device back to main interface, then swipe to show the "Control Center" - click "AirPlay" icon, find the device name, which shown on the projection image, click it to connect and ensure the "Mirroring" or "wireless mirroring" is open. Then you can enjoy large screen synchronous viewing of local video, music, pictures, documents and so on in your iOS device.



### 2.2 For Android device.

2.2.1 Back main interface and choose "Miracast", enter to miracast mode.

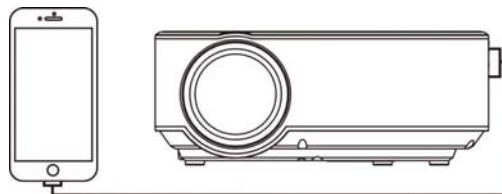
2.2.2 Turn on the miracast function your android phone, and search projector's SSID (RKcast-2918FC) then click it to connect, it will synchronous with projector automatically.  
PS: different brand mobile phones comes with different name of Miracast, such as wireless display, screen sharing, Muti-screen, allshare display etc.



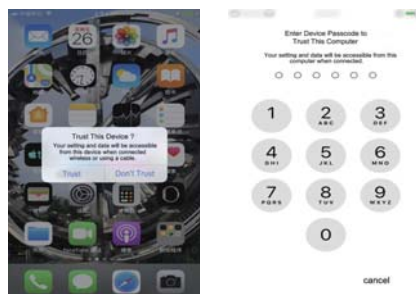
### 3. Screen mirroring - Wired connection: (using a original lightning cable. )

#### 3.1For iOS device.

3.1.1Connect your iOS device via USB port.



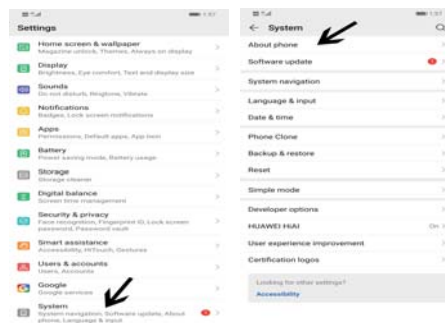
3.1.2For the first time use, there has a window pops up on your iOS device (see below picture 1), click "Trust" and input the correct password (see the below picture 2)



---

### 3.2 For Android device.

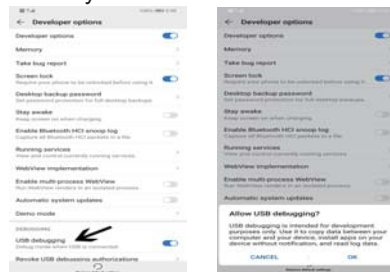
3.2.1 Android phone open setting→system (picture 1), and find "About phone"(picture 2)



3.2.2 Click 7 times on version number (here Huawei phone as a sample), then will pop up the below pic: "Developer model". Then back to system, click "Developer options".



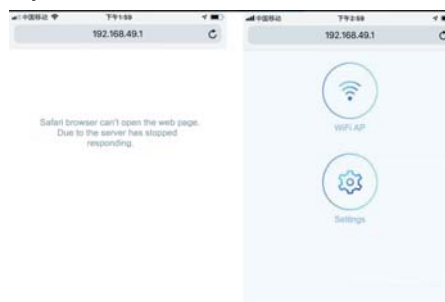
3.2.3 Open “USB debugging”(picture 1), it will pop up a window "Allow USB debugging" Tap "OK"(picture 2) and wait for 5 seconds then it will screen mirroring automatically.

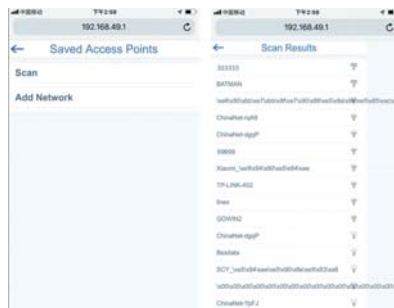


#### 4. iOS and Android device screen function:

4.1 iOS/Android device connect with projector, close screen mirror and close 4G network.

4.2 Open iOS/Android device WiFi setting, find projector's WiFi name, click to connect. Then open browser and input IP address "192.168.49.1", choose first option WiFi setting, and find the connectable WiFi, then input correct password.





4.3 After connection succeed, it will generate a new IP address, which will shown on the top center of projection image. The router only needs to be connected one time, next time use the projector again, it will connect to the router automatically.



#### FCC Warning Statement

Changes or modifications not expressly approved by the party responsible for compliance could void the user's authority to operate the equipment. This equipment has been tested and found to comply with the limits for a Class B digital device, pursuant to Part 15 of the FCC Rules. These limits are designed to provide reasonable protection against harmful interference in a residential installation. This equipment generates uses and can radiate radio frequency energy and, if not installed and used in accordance with the instructions, may cause harmful interference to radio communications. However, there is no guarantee that interference will not occur in a particular installation. If this equipment does cause harmful interference to radio or television reception, which can be determined by turning the equipment off and on, the user is encouraged to try to correct the interference by one or more of the following measures:

- - Reorient or relocate the receiving antenna.
- - Increase the separation between the equipment and receiver.
- - Connect the equipment into an outlet on a circuit different from that to which the receiver is connected.
- - Consult the dealer or an experienced radio/TV technician for help.

This device complies with part 15 of the FCC Rules. Operation is subject to the following two conditions: (1) This device may not cause harmful interference, and (2) this device must accept any interference received, including interference that may cause undesired operation.

#### RF Exposure Statement

To maintain compliance with FCC's RF Exposure guidelines, This equipment should be installed and operated with minimum distance of 20cm the radiator your body. This device and its antenna(s) must not be co-located or operation in conjunction with any other antenna or transmitter.