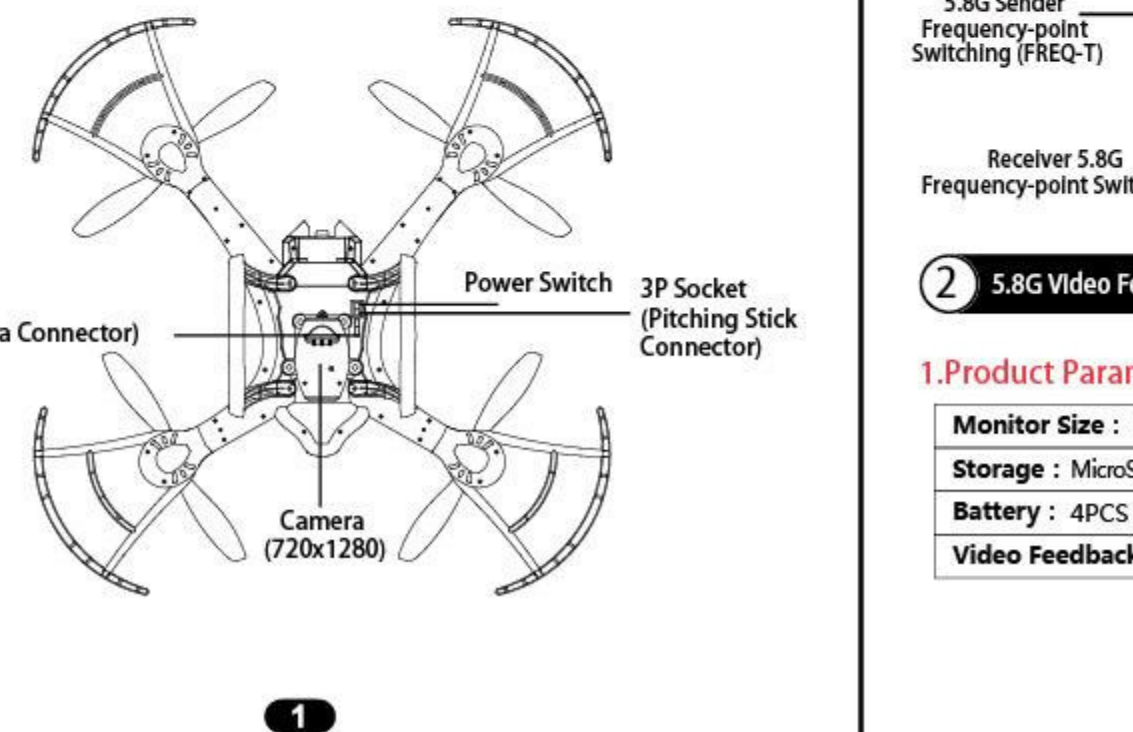
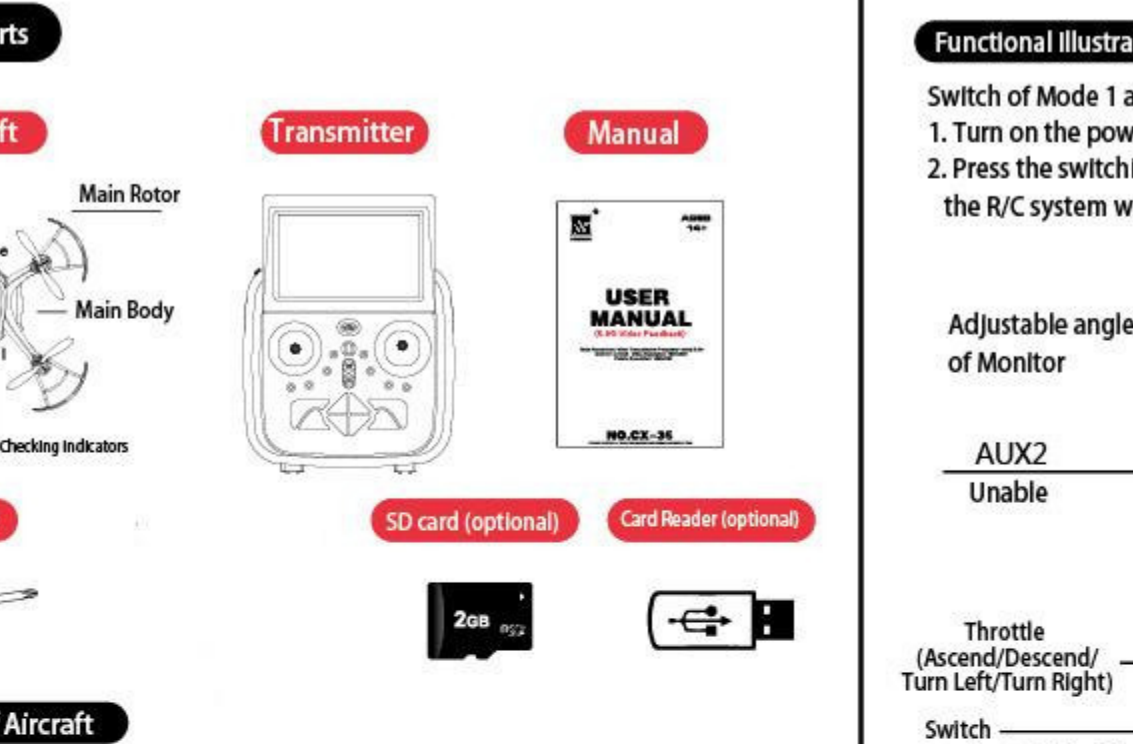


AGES 14+

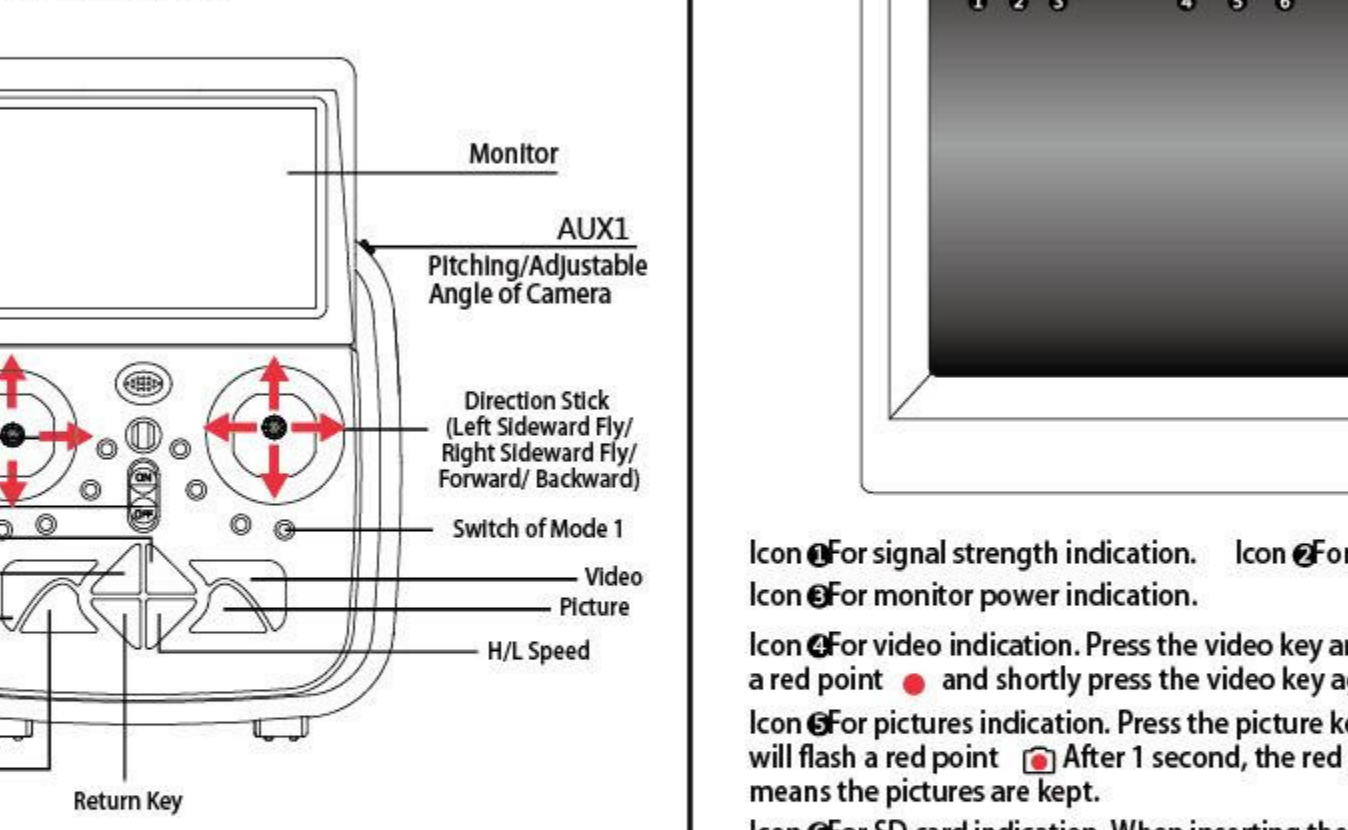
USER MANUAL (5.8G Video Feedback)

Main Parameters: Video Transmission Frequency-point: 5.8G
Monitor: 4.3 inch Video Resolution: 1280x720
Picture Resolution: 1280x720



Functional Illustration of Transmitter

Switch of Mode 1 and Mode 2:
1. Turn on the power of transmitter, and it is defaulted to Mode 2.
2. Press the switching key to Mode 1 and turn on the power at the same time, the R/C system will change to Mode 1 automatically.



2. 5.8G Video Feedback Equipment Illustration

1. Product Parameters	
Monitor Size : 4.3 inch	Wireless Receiving : 5.8G 8 Channels
Storage : MicroSD (TF) Card and the largest is 32GB	Monitor Resolution : 480X272
Battery : 4PCS 1.5V "AA" alkaline battery	Working Temperature : 0~40 degree
Video Feedback Distance : ≥500m	Storage Temperature : -20~60 degree

2. Graph for Top of Monitor



Icon 1 For signal strength indication. Icon 2 For channel indication.
Icon 3 For monitor power indication.
Icon 4 For video indication. Press the video key and the video icon will become a red point and shortly press the video key again and the video is kept.
Icon 5 For pictures indication. Press the picture key and the middle of the icon will flash a red point. After 1 second, the red point will disappear and it means the pictures are kept.

Icon 6 For SD card indication. When inserting the SD card, the icon is showed in 1 if it can be normally read. The icon is showed in 2 if there is without the SD card or it can't be normally read.
Icon 7 For aircraft power indication.

3. 5.8G Video Feedback Equipment Connection

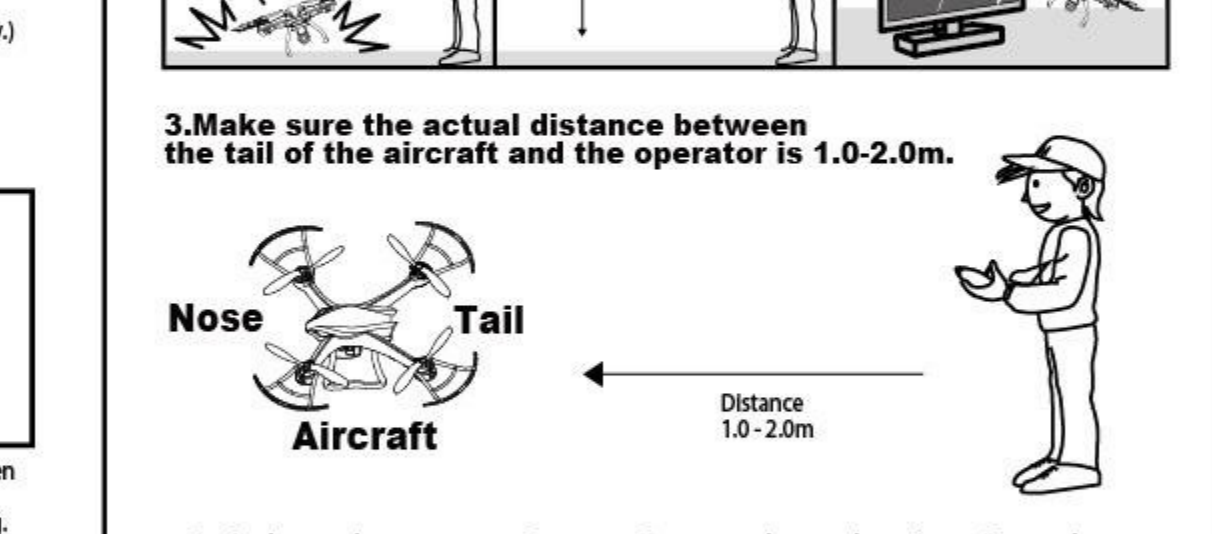
- 1). Install 4PCS 1.5V AAA battery to the battery bin of the monitor and please pay attention to the direction of the positive and negative poles when installing.
- 2). Turn on the power of transmitter and the monitor will be lighted up.
- 3). Connect the power of aircraft and switch on the power of transmitter, the transmitter will sound of "DI DI" and it means successful decoding. At the same time, the monitor will show back the real-time pictures taking by aircraft.
- 4). After finishing the above operations, the indicators on the aircraft will change to be lighting constantly and the aircraft can fly normally.

4. 5.8G Video Feedback Equipment Frequency Selecting

In order to avoid the existence of same frequency disturbing of 5.8G video feedback equipment frequency-point when using, the user needs to make frequency-point matching and selecting when using. There sets 8 frequency-points for selection of 5.8G video feedback system. It is defaulted to channel "1" of the switch-on system. When suffering same frequency disturbing and influencing the pictures, you can make frequency selection from the 5.8G monitor port and sender port and the detailed operations are as the followings:
Monitor Port (FREQ-T)
When switch on, it is defaulted to channel 1. Gently press the frequency-selecting key once, it is channel 2. Gently press the frequency-selecting key twice, it is channel 3. Gently press the frequency-selecting key 3 times, it is channel 4. Gently press the frequency-selecting key 4 times, it is channel 5. Gently press the frequency-selecting key 5 times, it is channel 6. Gently press the frequency-selecting key 6 times, it is channel 7. Gently press the frequency-selecting key 7 times, it is channel 8. Close the monitor and switch on again, it is channel 1 again.
Sender Port (FREQ-R)
Switch on power of transmitter and it is defaulted to channel 1. Gently press the frequency-selecting key on the transmitter, it is channel 2 with sounds of "DI DI", channel 3 with sounds of "DI DI DI", channel 4 with sounds of "DI DI DI DI", channel 5 with sounds of "DI DI DI DI DI", channel 6 with sounds of "DI DI DI DI DI DI", channel 7 with sounds of "DI DI DI DI DI DI DI" and channel 8 with sounds of "DI DI DI DI DI DI DI DI". Please cut off the power and make decoding again if the frequency-selecting matching is not successful. (Note: When the transmitter is selecting frequency, it needs to wait for 2-3 seconds for selecting the next one after each selecting of frequency.)

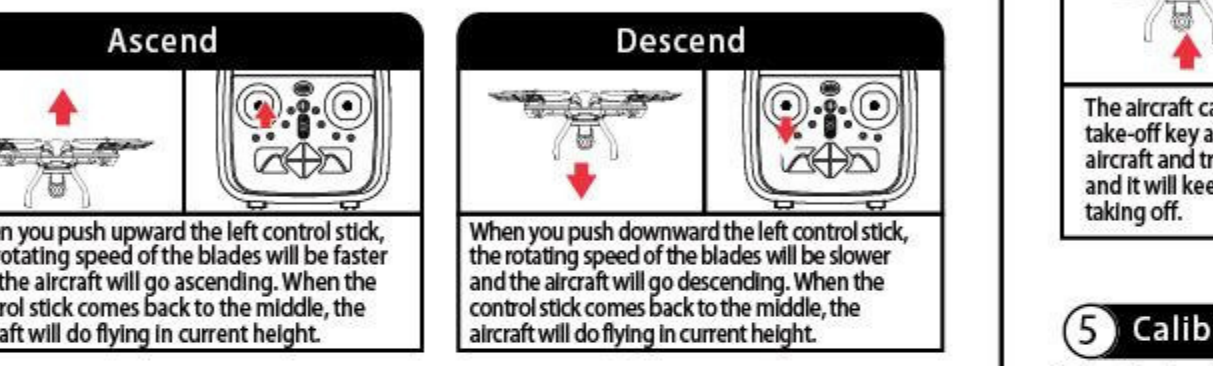
3. Preparation before Take Off

1. Aircraft Charging (charging time is about 2 hours)

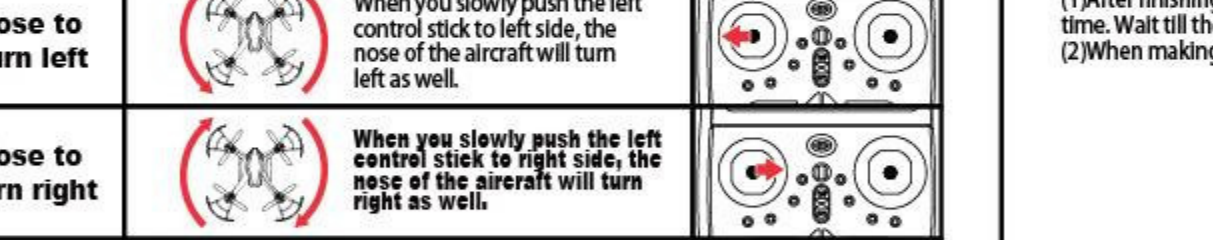


2. Notes for Control

Scope of Control: They flying scope of the aircraft is about 100m and if beyond the scope, it would automatically return along with the nose of the aircraft when turning on.
Warning: If flying in strong wind: The aircraft may go beyond the control scope and the aircraft would be out of control. The height sensor of the aircraft would be error, which causes too large height changes to the aircraft that it can't normally hold the height. If you want to get better flying experience, we suggest to fly it in the weather of no wind or micro wind.

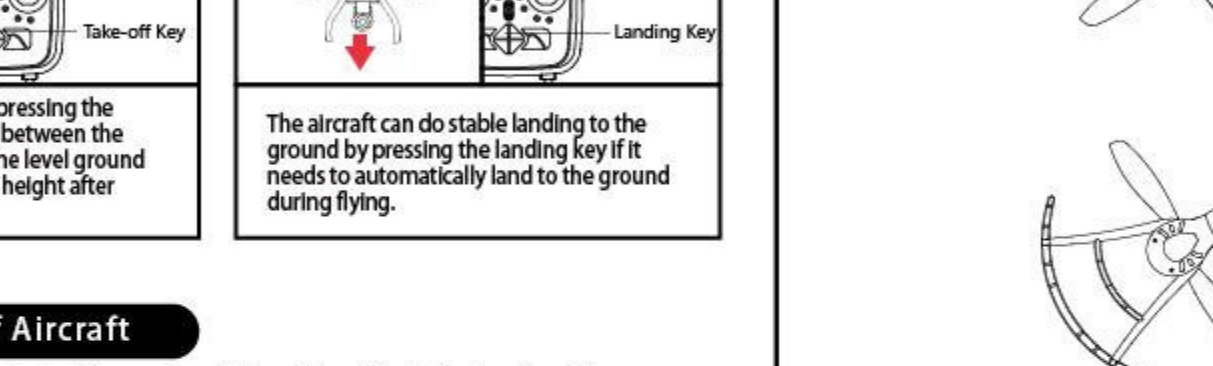


3. Make sure the actual distance between the tail of the aircraft and the operator is 1.0-2.0m.



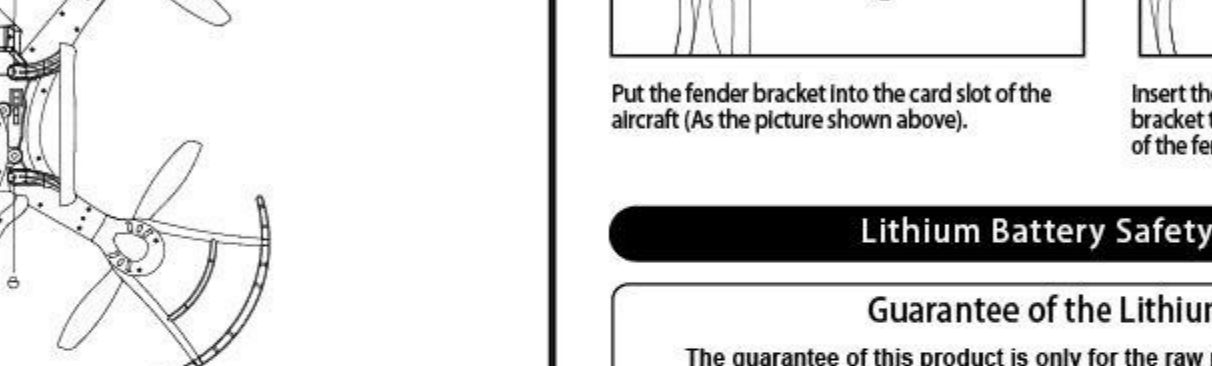
4. Basic Operation Methods

Unlocking
After successful decoding between aircraft and transmitter, push the throttle stick to the left-bottom corner and push the direction stick to right-bottom corner so that two sticks become figure of Eight. It means successful unlocking once the motor rotates slowly.
Locking
After successful decoding between aircraft and transmitter, push the throttle stick to the left-bottom corner and push the direction stick to right-bottom corner so that two sticks become figure of Eight. It means successful locking once the motor stops rotating.



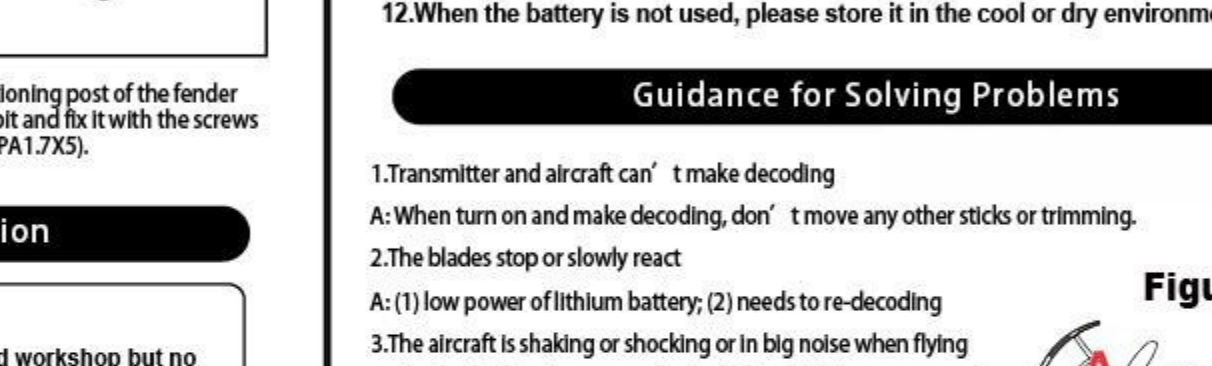
5. Calibration of Aircraft

When the aircraft was hit or unstable flying was found, it needs to calibrate the aircraft and the calibration methods are as the following:
(1) After finishing decoding, push the Left/Right control stick to the right-bottom corner at the same time. Wait till the red indicators of the aircraft are flashing, it means the calibration is successful.
(2) When making calibration, please make sure the aircraft should be placed on the level ground.



6. Installation of Parts

1. Installation of Landing Skid
Fix the landing skids to the main body with the 4PCS PA1.7x7 screws as the figure shown.



7. Installation of Fender Bracket

Put the fender bracket into the card slot of the aircraft (As the picture shown above).
Insert the middle positioning post of the fender bracket to the screws bit and fix it with the screws of the fender bracket (PA1.7X5).



Lithium Battery Safety Instruction

The guarantee of this product is only for the raw materials and workshop but no guarantee is given to this product. Under any circumstances, our company won't compensate the amount that higher than the retail price value.

Under the condition of non-operation, charging to the lithium battery may cause fire or injury or loss of property. The user should well notice the risk hidden when using this kind of product. The manufacturer of sales agent or retailer won't take any responsibility for any accident happened. Please read carefully the safe guidance and charging instruction before using this product.

Please put the battery on the place where is far away from the children or pets. User on or less than 18 years old should use this product under the guidance of adult. Children under 14 years old should not operate it by its own.

Guidance for Solving Problems

1. Transmitter and aircraft can't make decoding
A: When turn on and make decoding, don't move any other sticks or trimming.
2. The blades stop or slowly react
A: (1) Low power of lithium battery; (2) needs to re-decoding
3. The aircraft is shaking or shocking or in big noise when flying
A: Check whether the motors, body shell and blades are correctly installed.
4. The blades can rotate but can't take off
A: Check whether the blades A/B are correctly installed and please correctly install the blades as the figure show.
5. One or more motors can't rotate
A: (1) The motor is broken and replace the new one;
(2) The motor line drops and it needs to bond the wire again;
(3) Any transistor on the sender inside the transmitter is burn and it needs to change to a new transmitter.
6. The aircraft is still drifting after calibration again
A: Put the aircraft on the level ground and put several papers in its drifting direction (the thickness depends on the level of the drifting) so that you can put the calibration accelerator on the level ground and solve the drifting problem.

1. It is highly forbidden to charge it for a long time under unattended condition so as to avoid the accident.
2. Please use the original charger included for charging this product.
3. It is highly forbidden to decompose or disassemble the battery.
4. Batteries are forbidden to be used or kept under high temperature or heat source or near the flammable product.
5. When charging the battery, covering the charger or battery is highly forbidden. Please keep ventilation and make sure that it should be charged under the condition of fire safety.

Notice:

After the aircraft is flying for a long time, you use the "One-key to Return" function, it may cause the deviation for flying return, therefore, it should be careful to use this function.

- Different types of batteries or new and used batteries are not to be mixed,
- Batteries are to be inserted with the correct polarity,
- Exhausted batteries are to be removed from the toy.
- The supply terminals are not to be short-circuited,

2.4G Product Parameters:
RF Transmission Frequency: 2420-2465MHz
Modulation: FSK
Battery: 6VDC supplied by 4PCS 1.5V AA Batteries
Working Temperature: -20~55 degree

NOTE: This equipment has been tested and found to comply with the limits for a Class B digital device, pursuant to part 15 of the FCC Rules. These limits are designed to provide reasonable protection against harmful interference in a residential installation. This equipment generates, uses and can radiate radio frequency energy and, if not installed and used in accordance with the instructions, may cause harmful interference to radio communications. However, there is no guarantee that interference will not occur in a particular installation. If this equipment does cause harmful interference to radio or television reception, which can be determined by turning the equipment off and on, the user is encouraged to try to correct the interference by one or more of the following measures:

- Reorient or relocate the receiving antenna.
- Increase the separation between the equipment and receiver.
- Connect the equipment into an outlet on a circuit different from that to which the receiver is connected.
- Consult the dealer or an experienced radio/TV technician for help.

This device complies with part 15 of the FCC rules. Operation is subject to the following two conditions:

- (1) This device may not cause harmful interference, and
- (2) This device must accept any interference received, including interference that may cause undesired operation.

Changes or modifications to this unit not expressly approved by the party responsible for compliance could void the user's authority to operate the equipment.



Disposal and recycling information

This symbol (with or without a solid bar) on the device, batteries (if included), and/or the packaging, indicates that the device and its electrical accessories (for example, a headset, adapter, or cable) and batteries should not be disposed of as household garbage. These items should not be disposed of as unsorted municipal waste and should be taken to a certified collection point for recycling or proper disposal.

For more detailed information about device or battery recycling, contact your local city office, household waste disposal service, or retail store.

Disposal of the device and batteries (if included) is subject to WEEE Directive Recast (Directive 2012/19/EU) and Battery Directive (Directive 2006/66/EC). The purpose of separating WEEE and batteries from other waste is to minimize the potential environmental impacts and human health risk of any hazardous substances that may be present.

Battery replacement warning

Risk of explosion if the battery is replaced by an incorrect type.

This product contains built-in battery that needs to be removed by a specialist before the product disposal mandatory

Keep the battery away from excessive heat and direct sunlight. Do not place it on heating devices such as microwave ovens or radiators. Battery may explode if overheated. Recommended if possible

- 1) Risk of explosion if battery is replaced by an incorrect type.
- 2) Dispose of used batteries according to the instructions.

DECLARATION OF CONFORMITY

We, Guangdong Cheerson Hobby Technology Co., Ltd

(manufacturer's name)

of Fengxin No.2 Road & Laimei Road, Fengxin Industrial Zone Chenghai 515800 Shantou,

Guangdong Province PEOPLE'S REPUBLIC OF CHINA

(address)

declare under our sole responsibility that the product

Product: Quadcopter

Model: CX-35, CX-20, CX-22, CX-36, CX-37,

CX-23, CX-24, CX-91, CX-92, CX-93

Refer the declaration of brand name: N/A

(detailed description of product including name, type, model and supplementary information such as lot, batch or serial number, sources and number of items)

to which this declaration relates, is in conformity with the following standards and/or other normative documents.

EN 301 489-1 V1.9.2 (2011-09); EN 301489-3 V1.6.1 (2013-08);

EN 300 440-2 V1.4.1(2010-08); EN 62479:2010; EN 62311:2008

EN 60950-1:2006/A2:2013

We hereby declare that [all essential radio test suites have been carried out and that] the above named product is in conformity to all the essential requirements of Directive 1999/5/EC.

The conformity assessment procedure referred to in Article 10 and detailed in Annex [III] or [IV] of Directive 1999/5/EC has been followed with the involvement of the following Notified Body(ies):

TUV SUD BABT, Octagon House, Segensworth Road, Fareham, Hampshire, PO15 5RL , UK

Identification mark:

0168

(Notified Body number)

CE 0168

The technical documentation relevant to the above equipment will be held at:

Guangdong Cheerson Hobby Technology Co., Ltd

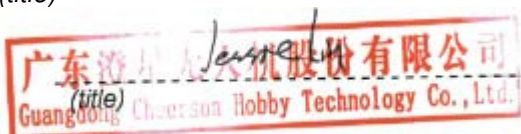
Fengxin No.2 Road & Laimei Road, Fengxin Industrial Zone Chenghai 515800 Shantou, Guangdong

Province PEOPLE'S REPUBLIC OF CHINA

(name and address of EU representative)

(name)

(title)


(signature of authorised person)

2016-06-22

(date)