

AGES  
14+

# RC Quadcopter INSTRUCTION MANUAL



**2.4GHz**

Thank you for purchasing our product. In order to use it correctly and make sure safety, please read the instruction book carefully before using. Please well keep it for your further reference.

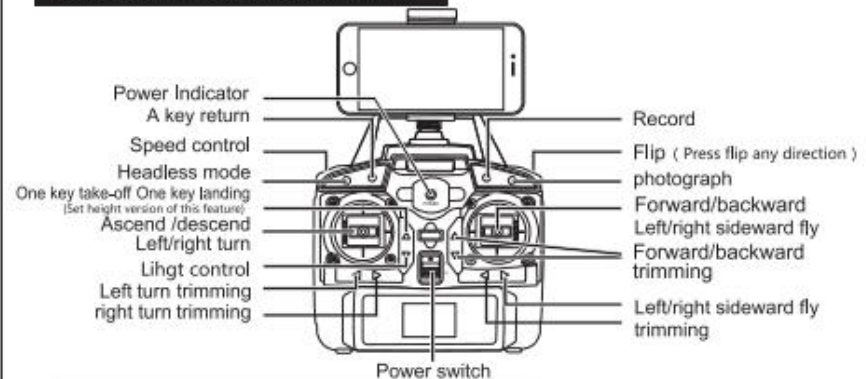
## CAUTIONS

1. Any electric component should not be moistened to avoid any other breakdown.
2. If the aircraft is smeared, please do not use any cleanser to clean it as other cleansers will damage the plastic and the synthesis part.
3. Please do not let the aircraft fly away your eye scope during flying.
4. Do not let the children play this aircraft alone.

## TECHNICAL PARAMETER

180 - Charging time: About 200 minutes  
Flying time: About 8 minutes  
Remote controlled distance: About 80 m

## TRANSMITTER INSTRUCTION



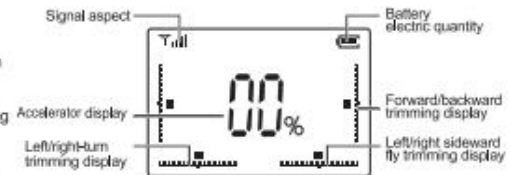
## INSTRUCTIONS OF LCD INTERFACE

After installing the batteries, push the remote controller switch to "ON", now the indicator light flashes and signal icon is "r". It means without any signal.

The transmitter will ring twice once pairing succeeds, and the signal icon is "v".

Push the "ascend/descend lever" to the

top and then pull it back to the lowest. The transmitter will ring once, power indicator will light. It means transmitter has started. The LCD interface image is showed as picture.



## ASSEMBLING OF THE TRANSMITTER

Open the battery cover on the back of the transmitter and correctly load 4 pcs AA alkaline batteries as per the polarity indicated. (Batteries need to buy separately) as instructions in below graph.



### Cautions:

1. Make sure the polarity of the battery and battery box should be correct and can't be loaded upside down.
2. Please do not mix using the old batteries with the new ones.
3. Please do not mix using batteries with different types.

## THE CHARGING INSTRUCTION OF AEROCRAFT BATTERIES

1. Put the charger plug into a socket of AC100V-240V. The charging finishes when the indicator turns green.
2. The power outlet, then insert the plug of the battery charger socket, (note would not be inserted) at this time if you are dissatisfied with a dead battery, the charger light is red and start charging; When charging is complete, The charger light is green. Charging time is 200 minutes.



## Installation steps of quadcopter's safety guard



Figure (1)  
1. Pull out decorating parts as shown in Figure (1).



Figure (2)  
2. Press down decorating parts as shown in Figure (2) and insert blade protective frame into fuselage interface.



Figure (3)  
3. Twist two screws of every parts as shown in Figure (3).

## Installation steps of quadcopter's stands



Figure (1)

1. Insert stands into the quadcopter body as figure(1).

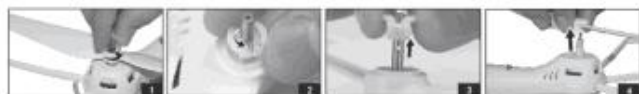


Figure (2)

2. Twist the wide screws to locking the stands as figure(2).

## Steps of fan blade's installation/disassembly of aircraft

Steps of fan blade's disassembly:



1. Rotate and back out fan blade cover in anti-clockwise direction as shown in Figure (1).
2. Rotate blade lockstitch for about 90° in the anti-clockwise as figure(2) till the iron shaft point to the opening of blade lockstitch.
3. Get iron shaft out and pull blade lockstitch upward as figure (3) shows.
4. Pull out fan blade upward as shown in Figure (4).

Installation steps of fan blade:



1. Insert fan blade into principal axis pipe as shown in Figure (1).
2. Install the blade lockstitch inside the quill as figure (2) shows to ensure that the gap of blade lockstitch aligns at the hole on the quill.
3. Install the iron shaft inside and rotate blade lockstitch for about ninety degrees in the clockwise direction shown in figure (3).
4. Rotate and twist fan blade cover in clockwise direction as shown in Figure (4).

## PREPARATION FOR TAKING OFF

1. Steadily place the aircraft on the level ground. Please take it in hand and switch on the power of the aircraft.
2. Make sure you are in the place at least 2 meters behind the aircraft.  
(Tail blade should be pointed to yourself).
3. Re-inspect the location and make sure it is far away from the people, the animal or any other obstacles.
4. Turn on the power switch, the power indicator will be on the state of glittering. This time push the accelerating lever to the top and then pull it back to the lowest. Only when the power indicator shows eternal bright can you use it. This time the transmitter can be used normally and you can prepare to take off.
5. One-button back, (when this key is pressed, aircraft back aircraft took off in the direction of the backwards direction, your vehicle will automatically rewind back)
6. When you return, if you control the direction stick (forward, backward, left and right fly joystick) is a key to return headless mode lights flash back direction joystick operation, regardless of aircraft in any direction can fly back.

### Cautions:

If the indicator of the transmitter is on the state of glittering, it shows that electricity is not enough and this time you need to replace the battery in the transmitter.

## MANIPULATING METHOD

### Tips:

The new learners should speed up the accelerator slowly. The suggestive best controlling height is in the area of head-up and visual.

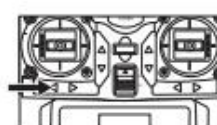
Ascend & Descend	Push the left lever (accelerator) upward, the turning speed of blade becomes faster and the aircraft ascends. Push the left lever (accelerator) downward, the turning speed of blade becomes slower and the aircraft descends.	Ascend Descend	
swerve	Push the left lever (accelerator) toward the left and the aircraft turn to left. Push the left lever (accelerator) toward the right and the aircraft turn to right.	Left turn Right turn	
Forward & Backward	Push the right lever (swerving rudder) upward, the aircraft moves forward. Push the right lever (swerving rudder) downward, the aircraft moves backward.	Forward Backward	
Left/right sideward fly	Push the right lever (swerving rudder) toward the left, the aircraft siding fly toward the left. Push the right lever (swerving rudder) toward the right, the aircraft siding fly toward the right.	Left sideward fly Right sideward fly	

## AEROCRAFT TRIMMING

When the aircraft spins towards to left, Please press the button "right turn trimming" continuously till it stops spinning.



When the aircraft spins towards to right, Please press the button "left turn trimming" continuously till it stops spinning.





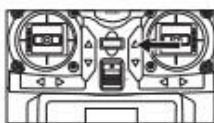
When the aircraft flies towards to left in the process of hovering, please press the "Right sideward fly trimming" continuously till it recovers.



When the aircraft flies towards to right in the process of hovering, please press the "Left sideward fly trimming" continuously till it recovers.



When the aircraft moves backward in the process of hovering, please press the "forward trimming" continuously till it recovers.



When the aircraft moves forward in the process of hovering, please press the "backward trimming" continuously till it recovers.

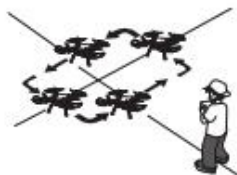


## FLYING PRACTICE

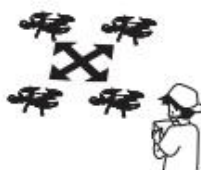
To master the aircraft, please attempt the following flying practices.



Fixed-point landing



To flight a square pattern.



Completion of a cross action.

You can sentinel take-off and landing of the aircraft, rotation, and other basic practice, and then attempt to fly the square, cross-shaped pattern of flight training fly.

## ROLLING CONTROL



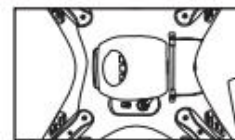
Stable, flexible, flight routes,  
Drift, 3D to roll easily

You can play some exciting control if you were real familiar in all the base operation. Firstly, flying the aircraft to 6 meter while pressing the button of rolling control, Push any of the forward/backward /left /right sideward fly controller to the end and release all the controller, then the aircraft will be rolling by 360 angle in outside.

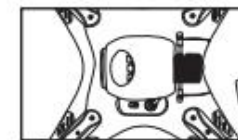
## PREPARATIONS OF VIDEO RECORDING



Camera



Insert the MEMORY card into  
the recording box



Press it lightly and then take  
out the MEMORY card.

1) MEMORY card installation: Insert the MEMORY card into the card base, lightly press, insert, and press it again, it will eject automatically.

Notice: The camera indicator doesn't light on without MEMORY card. Please insert the MEMORY card.

2) Status indicator light of camera:

Blue : standby state

Red light flashes continuously: start to record.

Red light flashes stop: quit the recording state.

Red light flashes for 2 times: start to photograph

3) The camera functions of dynamic state/static state

Turn on the helicopter, lightly press the "record" button, the light flashes continuously and then starts to record. Repress the "record" button, it will quit the record state automatically and save the video into the MEMORY card.

Note (when there are no exit video, remove the MEMORY card or directly cut off power supply may cause the video to fail or burn out MEMORY cards) Press the "photograph" button, the indicator light of camera changes to red. When the indicator light flashes for 2 times, it means that it takes a photo and then save the photos into the MEMORY card.

#### 4) Video/photo operations

Turn off the helicopter, take out the MEMORY card and then install it into the card reader (connect to the computer). You will see the videos and photos by media player.

FPV Aerial shooting function: (If the product does not have MEMORY card, please ignore this function)

1. Methods:
  - ① Plug the connector of him and F PV camera into the socket of the aircraft.
  - ② When the FPV camera is turned on, the FPV camera will work normally if the blue and red LEDs are blinking. Indicates that no MEMORY card is inserted in the camera. (Please insert the card when the machine is turned off.)
  - ③ Open the video, you can see the video on the FPV camera real-time transmission scenarios. (The screen distance is about 100M-150M, please fixed the display on the remote control).
2. Get to know take photo and video:
 

When the FPV camera is connected to the display successfully, you can choose to take pictures or videos to capture the beauty you see.

  - ① Take photo: Press the camera button remote control, remote control beep, FPV camera red lights flash once to indicate the completion of photographs (Press the key did not respond when recording)
  - ② Take video: Press the remote control video key, the remote control beeps, the FPV camera's red light continuously blinks, indicating that the video is being recorded, press it again, the red light green long to indicate the end of recording.

### PROBLEMS AND SOLUTIONS

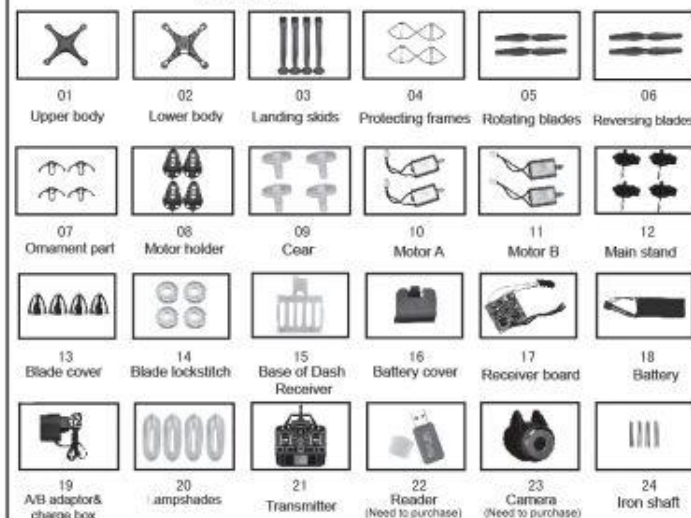
PROBLEMS	CAUSES	SOLUTIONS
Transmitter not working	1.The transmitter switch is on"OFF"	1.Turn on the transmitter
	2.Install the batteries improperly	2.Check with the pole indications and reinstall the batteries again
	3.Batteries are completely consumed	3.Replace with new batteries
Control failure	1.The transmitter switch is on"OFF"	1.Turn on the transmitter
	2.The aircraft battery unconnection	2.The aircraft battery in the correct orientation connection
	3.Too strong wind force	3. Do not fly under the environment of windy as too strong wind may cause flying limitation to the aircraft or it may hamper your controlling or flying.
Ascending failure	1.The rotation of main blades is too slow	1.Push up the throttle lever
	2.The fuselage battery is well consumed	2.Recharge the fuselage battery
Landing too soon	The throttle lever is pulled down too fast	Pull down the throttle lever slowly to perform a smooth landing
Out of control	The throttle level is not pulled to the end, When revising frequency is completed, The aircraft automatically rise	The throttle level should be pulled to the end in the process of revising frequency.
	Exceed the effective control distance	The effective control distance is 80m.

### PRECAUTIONS

- 1.The remote controlled distance **will** be shorten when the power (aerocraft or transmitter) is insufficient.
- 2.**It is difficult** to take off or fly not high when aerocraft's power is insufficient.
- 3.When the aerocraft is damaged, please repair it in time and stop operating, or it may lead to injury.
- 4.If you do not use the transmitter for a long time, please remove the batteries to avoid the batteries' leakage.
5. Do not drop the transmitter from the high altitude or crash it badly, otherwise, it **will** shorten the transmitter's using life.

### Spare parts

Here are alternative accessories. In order to provide convenience for customer purchasing, every component are marked. Accessories can be purchased from local dealer. Please specify the color when purchasing.



This device complies with part 15 of the FCC Rules. Operation is subject to the following two conditions:

(1) this device may not cause harmful interference, and (2) this device must accept any interference received, including interference that may cause undesired operation.

Any changes or modifications not expressly approved by the party responsible for compliance could void the user's authority to operate the equipment.

NOTE: This equipment has been tested and found to comply with the limits for a Class B digital device, pursuant to Part 15 of the FCC Rules. These limits are designed to provide reasonable protection against harmful interference in a residential installation. This equipment generates, uses and can radiate radio frequency energy and, if not installed and used in accordance with the instructions, may cause harmful interference to radio communications.

However, there is no guarantee that interference will not occur in a particular installation. If this equipment does cause harmful interference to radio or television reception, which can be determined by turning the equipment off and on, the user is encouraged to try to correct the interference by one or more of the following measures:

- Reorient or relocate the receiving antenna.
- Increase the separation between the equipment and receiver.
- Connect the equipment into an outlet on a circuit different from that to which the receiver is connected.
- Consult the dealer or an experienced radio/TV technician for help.

The device has been evaluated to meet general RF exposure requirement.

The device can be used in portable exposure condition without restriction.