

70.00 mm

150.00 mm

Please read the manual carefully before using this product.

Thank you for your purchase and use of XGIMI products, for your safety and interests, please read the manual carefully before using this product. If you are not in accordance with the product manual operation or attention, resulting in any personal injury, property or other losses, XGIMI will not be liable.

About the manual (hereinafter referred to as "manual")

The copyright belongs to XGIMI; The trademarks and trade names mentioned in the manual belong to their respective owners; if the manual is inconsistent with the actual product, the actual product shall prevail in kind.

If you have any objection to the contents or terms of the manual, please submit a written objection within seven days after the purchase, otherwise you have agreed to understand and accept all the contents of the manual.

XGIMI reserves the right to interpret and modify the manual.

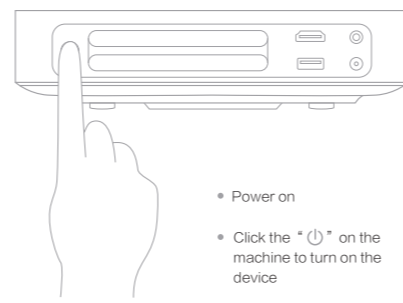


*Please use HD Port2.0 cables for HD Port2.0 interfaces



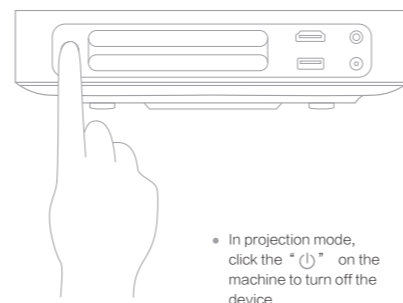
*Move the function switch to the left (VOL): Volume "+" & "-" keys to adjust volume; Move the function switch to the right (Focus): Focus "+" & "-" keys to adjust focus.

1 Power on



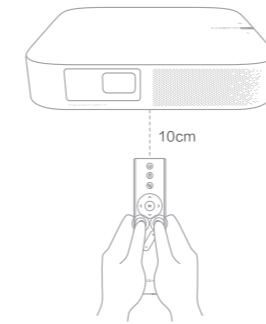
- Power on
- Click the "ON/OFF" on the machine to turn on the device

2 Power off



- In projection mode, click the "ON/OFF" on the machine to turn off the device

3 Remote Control Pairing



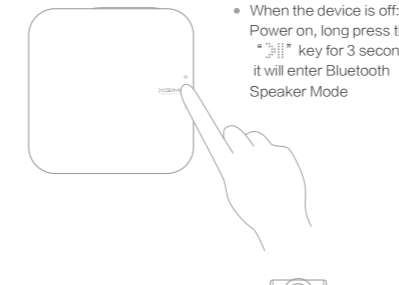
- Please place remote control within 10cm from the device. Press "ON/OFF" and "OK" at the same time, when the indicator light flashes, then release the buttons, the indicator light flashes continuously, after hearing "Ding" sound, connection is successful.
- If pairing failed, exits the pairing mode after 30 seconds timeout, follow the steps above to pair again.
- Note: Please put two AAA batteries into the remote control.

4 Remote control functions

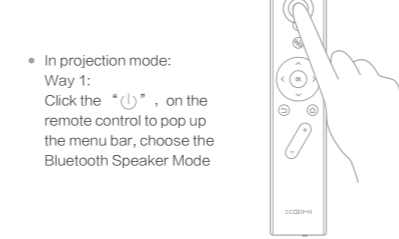
- Focusing functions
The focusing function is enabled after moving the function switch, at the bottom of the remote control, to the right (Focus); Pressing "Volume+" to adjust the volume when function key is at the left.
- Menu/shortcut key functions
Shortly press the "OK" to enable the menu key functions; long press the "OK" to enable the shortcut key functions

5 Bluetooth Speaker Mode

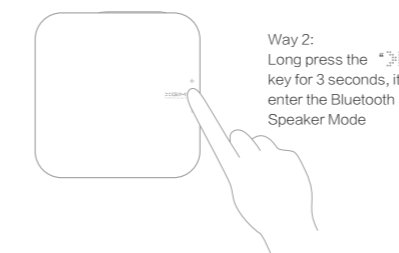
Enter Bluetooth speaker mode



- When the device is off: Power on, long press the "Bluetooth Speaker Mode" key for 3 seconds, it will enter Bluetooth Speaker Mode



- In projection mode:
Way 1: Click the "Bluetooth Speaker Mode" key on the remote control to pop up the menu bar, choose the Bluetooth Speaker Mode



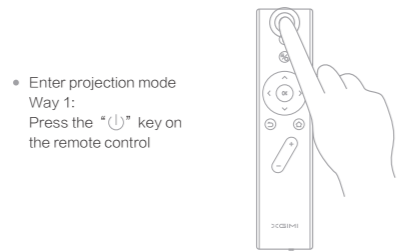
- Way 2: Long press the "Bluetooth Speaker Mode" key for 3 seconds, it will enter the Bluetooth Speaker Mode

Chengdu XGIMI Technology Co., Ltd.

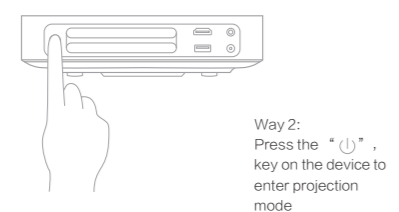
Building A4, Tianfu Software Park, High-tech zone, Chengdu, China
+86-28-67598981 www.xgimi.com service@xgimi.com

Exit Bluetooth Speaker Mode

- Shut down the device: Long press the "Bluetooth Speaker Mode" key for 3 seconds, the device will be shut down

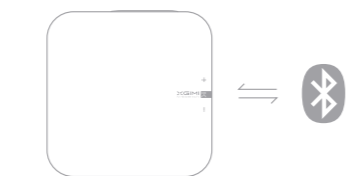


- Enter projection mode
Way 1: Press the "Bluetooth Speaker Mode" key on the remote control



- Way 2: Press the "Bluetooth Speaker Mode" key on the device to enter projection mode

- Enter the Bluetooth speaker mode standby status, connect your device with Z6 Polar through Bluetooth



- Play/pause: When playing a network/local song, click the "Play/Pause" key on the device or click the "OK" key on the remote control
- Selection of songs: Double click the "Bluetooth Speaker Mode" key on the device to select next song, or click the "Left" or "Right" on the remote control for selection
- Volume adjustment: Click/long press the volume "+" or "-" keys on the device or those on the remote control to adjust volume

6 XGIMI Assistance

Download "XGIMI Assistant" application from App store on your devices.

- Mobile phone remote: device can be easily controlled by mobile phone.
- Mobile phone resource: send the resource from mobile phones to device to view photos or videos.



7 More Functions

System Upgrade

- Online Upgrade
Online upgrade through system settings
- Local Upgrade
1. Copy the firmware to the packing list of U disk in FAT32 format
2. Insert the U disk into the USB2.0 interface and select the U disk upgrade.
- Compulsive upgrading
Copy the upgraded firmware to the root director with FAT32 format in a USB drive. When the device is off, insert the USB drive into a USB 2.0 interface, long press the "ON/OFF" on the device for 7 seconds until the indicator lamp flickers rapidly. Start rooting at the moment. The indicator lamp will start flickering slowly after the rooting is finished. then device will enter projection mode.

System Function

- The manual provides instruction of basic functions. For detailed operation and other functions, please check the electronic instructions on the main page: <https://forum.xgimi.com/download-firmware.html>

* Note: Due to the continuous updating of the system function, please refer to the actual functions.

Usage Notice

How to use the equipment correctly:

- Do not turn the lens towards the human eyes to avoid the strong light from the lens damage the eyes.
- Do not block the air inlet and outlet of the device to avoid damage to the internal electronic devices.
- Do not use paper, cloth, and other cleaning tools to wipe the lens directly to avoid damage to the lens; use clean air blowing to remove dust on the lens' surface.
- Do not use chemicals, cleaning agents or clean water to clean the device, as well as to avoid rain, moisture and mineral liquid corrosion circuiting board.
- Please put the device and its parts and accessories in the place where children cannot touch.
- Please ensure that the device is being used in a dry and ventilated environment.
- Do not store the device in hot or cold environment, high (low) temperature will shorten the life span of electronic devices. Enabling operating environment could be 0-40C.
- Do not put the device in any heating equipment (such as drying machine, microwave oven, and etc.)
- Do not squeeze the device or place heavy objects on the device to avoid damage to the device.
- Do not throw, knock, or violent shaking the device, resulting in damage to the internal circuit board.
- Do not attempt to disassemble device. If you have any questions, please contact the after-sales service of XGIMI.
- Do not maintain any products. If the device or any parts cannot work normally should promptly consult the after-sales service or factory repair.
- If the device has not been using for a long time, please cut off the power supply.

FCC Warning

This device complies with Part 15 of the FCC Rules. Operation is subject to the following two conditions:
(1) this device may not cause harmful interference, and (2) this device must accept any interference received, including interference that may cause undesired operation. The user manual or instruction manual for an intentional or unintentional radiator shall caution the user that changes or modifications not expressly approved by the party responsible for compliance could void the user's authority to operate the equipment. In cases where the manual is provided only in a form other than paper, such as on a computer disk or over the internet, the information required by this section may be included in the manual in that alternative form, provided the user can reasonably be expected to have the capability to access information in that form.
For a Class B digital device or peripheral, the instructions furnished the user shall include the following or similar statement, placed in a prominent location in the text of the manual:
NOTE: This equipment has been tested and found to comply with the limits for a Class B digital device, pursuant to Part 15 of the FCC Rules. These limits are designed to provide reasonable protection against harmful interference in a residential installation. This equipment generates, uses and can radiate radio frequency energy and, if not installed and used in accordance with the instructions, may cause harmful interference to radio communications. However, there is no guarantee that interference will not occur in a particular installation. If this equipment does cause harmful interference to radio or television reception, which can be determined by turning the equipment off and on, the user is encouraged to try to correct the interference by one or more of the following measures:
-- Reorient or relocate the receiving antenna.
-- Increase the separation between the equipment and receiver.
-- Connect the equipment into an outlet on a circuit different from that to which the receiver is connected.
-- Consult the dealer or an experienced radio/TV technician for help.

CE RoHS FCC ID: JAFENX405L CAUTION: possibly hazardous optical radiation emitted from this product.

Radiation Exposure Statement

For Remote controller, this equipment complies with FCC radiation exposure limits set forth for an uncontrolled environment. This transmitter must not be co-located or operating in conjunction with any other antenna or transmitter

For LED Projector, this equipment complies with FCC radiation exposure limits set forth for an uncontrolled environment. This equipment should be installed and operated with minimum distance 20cm between the radiator & your body.

Note: For 5150-5250MHz band, it is restricted to indoor use.

BE	HR	AT
BG	IT	PL
CZ	CY	PT
DK	LV	RO
DE	LT	SI
EE	LU	SK
IE	HU	FI
EL	MT	SE
ES	NL	UK
FR		

The max RF output power of this product for CE certification is below:

Mode	Frequency Range	Max RF Output Power(dBm)
BLE	2402-2480MHz	3.50
BT3.0	2402-2480MHz	5.22
	2412-2472MHz	19.32
WLAN	5150-5250MHz	20.79
	5725-5850MHz	13.73

Z6 Polar

XGIMI