

## Quick Installation Guide for RF Wireless Optical Mouse

THIS UNIT COMPLIES WITH PART 15 FCC RULES.

OPERATION IS SUBJECT TO FOLLOWING TWO CONDITIONS:

(1) THIS DEVICE MAY NOT CAUSE HARMFUL INTERFERENCE.

(2) THIS DEVICE MUST ACCEPT ANY INTERFERENCE RECEIVED, INCLUDING INTERFERENCE THAT MAY CAUSE UNDESIREDC OPERATION.

### 1. Hardware Installation(See illustration ●)

#### 1-1. Installing a Mouse with Mouse Port(PS/2) Connector

If you have a mouse with a round mouse port connector, you must turn off the computer before connecting or disconnecting your mouse.

#### 1-2. Installing a USB Mouse

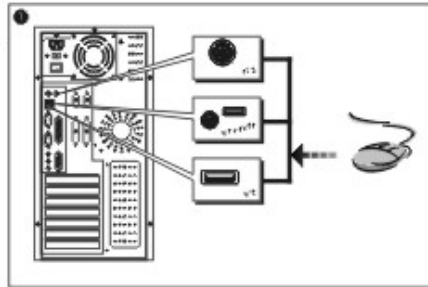
When you use a mouse with USB connector, you don't have to shut off the computer. Just plug the USB connector into the USB port.

#### 1-3. Installing a Combo (USB→PS/2) Mouse

The Combo Mouse comes with a USB connector, together with a USB→PS/2 port adapter.

Before plug your mouse into the computer, try to make sure what kind of mouse port you have.

If you have a USB port, plug in the original USB connector; if you have a PS/2 port, please connect the adapter first to the cable, then plug into the PS/2 port.



#### 1-4. Select a Suitable Channel(See illustration ●)

Open the mouse battery cover (or look for the channel switch in the back of the mouse) and receiver, then set channel switch to "1" or "2".

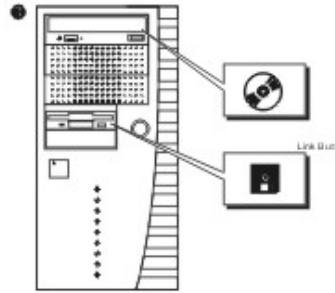
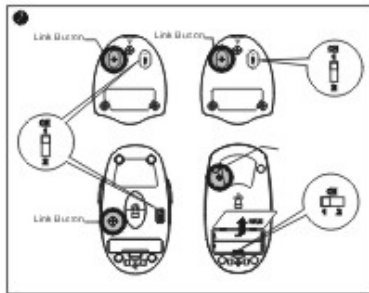
There will be some interfere when your nearby classmates or colleagues and you are using the same channel. Change to the other channel immediately when it happened. If your mouse is only one-channel type, just skip this section.

#### 1-5. Linkage(See illustration ●)

Press ID Link Button (which is under the Receiver bottom case), the Green LED lights should blink slowly at this time. Press ID Link Button of Mouse, the Green LED light blinking should become quickly. If the Link is complete, the Green LED will stay in Light, but blinks when the mouse is moving.

### 2. Software Installation (See illustration ● ● ●)

Insert the disk or CD to download the driver. Please find and double click the **setup**.



Then follow the steps in screen to finish the download procedure.  
 Mouse software supports DOS, Windows 3.1, Windows 95, Windows 98, Windows NT 3.51, Windows NT 4.0, Windows 2000 and Windows ME.

Before installing any software under Windows NT 4.0, we strongly recommend you create an Emergency Repair Disk using the Repair Disk utility provided by the system (RDISK.EXE).

Please note that USB mice are only supported under Windows 98, Windows 2000 and Windows ME.

### 3. Operation

After using the disk or CD to download the driver, there will be an icon in the start bar. While double-clicking the icon, a "Mouse Control Panel" window shows up. You can choose any function you like for programmable buttons.

3-1 A "Mouse Control Panel" will show up in the start bar.

Please double-click the icon.

A. Wheel (See illustration ③)

a. Wheel Mode:

Choose system default (Intel - Mouse) mode or enhance scroll mode.

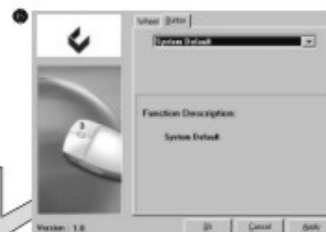
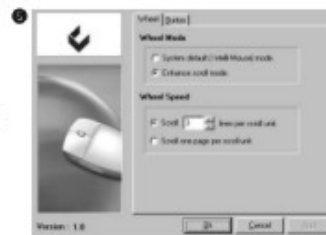
b. Wheel Speed:

Choose the speed of scrolling.

B. (Programmable) Buttons: (See illustration ④)

Choose which function you like to be.

System Default	Up	Find File	Close	Wheel
F1 - F10	Down	System Help	Application	Launch Default
Esc	Left	Middle Button	Double Click	Browser Launch
Backspace	Right	Minimize All	Minimize	Default E-mail
Enter	Undo	Windows	Window	IE Backward
Space	Redo	Run	Maximize	Universal Scroll
Delete	Cut	Start Menu	Window	Auto Scroll
Page Up/Down	Copy	System Property	Desktop Lock	Universal Zoom
Tab	Paste	Undo Minimize	Shift Lock	Connect to Internet
Home	Explorer	All Windows	Control Lock	
End	Find Computer	Control Panel	Hot Control	



### 4. Charging (See illustration ⑤)

Put into the rechargeable battery, and press mouse button. If there is red light in mouse wheel, that means the battery has no power. Recommend to plug the power adapter in the DC Jack to charge the batteries over 8 hours. While charging the mouse, you can keep to work. Stop to charge after 1~2 hours.

Notice:

1. When there is low power or no power in mouse, the scrolling button will have Red LED light. Please charge the mouse immediately.

2. While the mouse is in sleeping mode, please press any button or move the scroll wheel to wake up.

3. If you have installed another mouse driver or mouse software, it must be deleted and restart the computer.

