

**Wireless Optical Mouse
with Rechargeable Mouse Receiver
Use'r Guide**

User's Guide for Wireless Optical Mouse with Rechargeable Mouse Receiver

Notice:

Federal Communications Commission (FCC) requirements, Part 15

This equipment has been tested and found to comply with the limits for a class B digital device, pursuant to part 15 of the FCC Rules. These limits are designed to provide reasonable protection against harmful interference in a residential installation.

This equipment generates, uses and can radiate radio frequency energy and, if not installed and used in accordance with the instructions, may cause harmful interference to radio communications. However, there is no guarantee that interference will not occur in a particular installation. If this equipment does cause harmful interference to radio or television reception, which can be determined by turning the equipment off and on, the user is encouraged to try to correct the interference by one or more of the following measures:

- Reorient or relocate the receiving antenna.
- Increase the separation between the equipment and receiver.
- Connect the equipment into an outlet on a circuit different from that to which the receiver is connected.
- Consult the dealer or an experienced radio/TV technician for help.

CAUTION: Any changes of modifications not expressly approved by the grantee of this device could void the users authority to operate the equipment.

Congratulations on your purchase of this Wireless Optical Mouse. Please carefully read the User's Guide to learn about the installation and the powerful functions of your new Wireless Optical Mouse.

1. Contents of the Package

- 1) Wireless Optical Mouse *1
- 2) Rechargeable Mouse Receiver *1 (PS/2, USB or Combo)
- 3) AC to DC Adaptor *1
- 4) Two AA or two AAA Rechargeable Batteries for the Mouse
- 5) Mouse Driver *1 (Disk or CD-ROM)
- 6) User's Guide *1

2. Install Hardware

2-1. Install the Rechargeable Mouse Receiver with a PS/2 Connector

- 1) Please turn off your PC before connect the PS/2 connector with the PC.
- 2) Plug the PS/2 connector of the receiver into the PS/2 mouse port of the PC.

2-2. Install the Rechargeable Mouse Receiver with a USB Connector

- 1) You can turn on the PC before connect the USB connector with the PC.
- 2) Plug the USB connector of the receiver into the USB mouse port of the PC.

2-3. Install the Rechargeable Mouse Receiver with a USB to PS/2 Combo Connector

- 1) The combo connector is a USB connector with a USB to PS/2 adaptor.
- 2) Please check the mouse port of your PC. If the mouse port of the PC is USB, please plug the USB connector to the PC without using the USB to PS/2 adaptor.
- 3) If the mouse port of the PC is PS/2, please turn off the PC, connect the USB connector with the USB to PS/2 adaptor, and then connect the receiver with the PC.

2-4. Select the Mouse Channel

- 1) The two-channel switch is located at the back of the mouse or inside the battery case. Select channel "1" or "2".

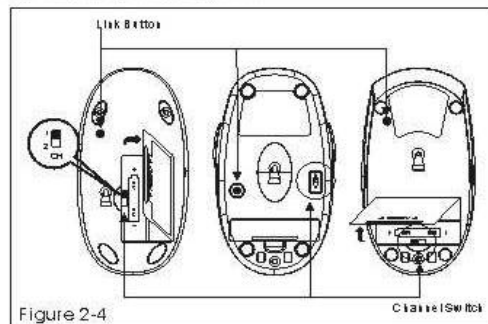
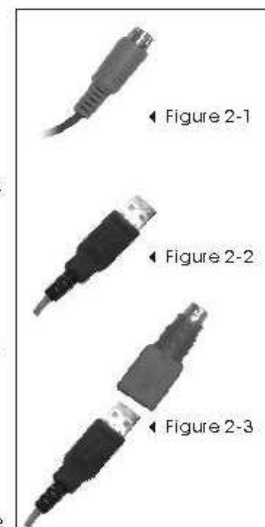


Figure 2-4

Channel Switch

- 2) **The location of the channel switch may be different from Figure 2-4 due to various mouse shapes.**
- 3) Put the batteries into the battery case.

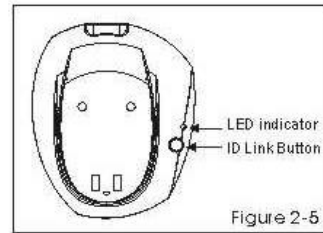


Figure 2-5

- 2-5. Link the Mouse with the Rechargeable Mouse Receiver
 - 1) Turn on the PC. The LED indicator on the receiver will light.
 - 2) Press the ID Link Button on the receiver and the LED indicator will blink. The receiver is ready to automatically link with the mouse
 - 3) Press the ID Link Button on the back of the mouse and the LED indicator on the receiver will blink quickly. The indicator will stay in light while successfully finish the linkage.
 - 4) The LED indicator will blink while you move the mouse.
 - 5) If you need to re-link the mouse or after changing the mouse batteries, please repeat the above linkage instructions.
 - 6) If the selected channel is interfered by other wireless-mouse users nearby, please change the selected channel to the other channel immediately.

3. Install Driver

3-1. Notice

- 1) The driver supports Windows 95, Windows 98, Windows NT, Windows 2000, Windows ME and Windows XP.
- 2) The USB interface is compatible with Windows 98, Windows 2000, Windows ME and Windows XP only.

3-2. Installation



- 1) Insert the driver disk or CD-ROM to your PC. The PC system may automatically install the driver through selecting the PC auto-install function.
- 2) If the PC system does not set the auto-install function, please double click the file "Setup.exe" and follow the setup instructions to complete the driver installation.
- 3) A Mouse Setting icon will appear on the tool bar of Windows after you successfully finish the installation.

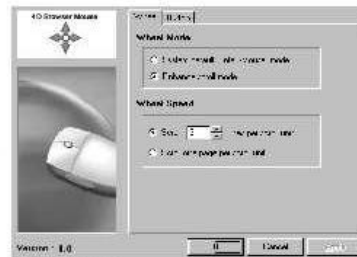


Figure 3-3-1

3-3. Select Mouse Functions

- 1) Double click the Mouse Setting icon.
- 2) Follow the selection instructions to set the button functions.

| | | | | |
|-----------------------|-----------------|---------------------|----------------|--------------------|
| • F1- F10 | • Down | • Internet Explorer | • Minimize All | • Space |
| • Auto Scroll | • Drag Lock | • Backward | • Windows | • Start Menu |
| • Backspace | • End | • Internet Explorer | • Minimize | • System Help |
| • Close Application | • Enter | • Forward | • Windows | • System Property |
| • Connect to Internet | • Esc | • Launch Default | • Page Down | • Tab |
| • Control Lock | • Explorer | • Browser | • Page Up | • Undo |
| • Control Panel | • Find Computer | • Launch Default | • Paste | • Undo Minimize |
| • Copy | • Find File | • E-mail | • Redo | • All Windows |
| • Cut | • Home | • Left | • Right | • Universal Scroll |
| • Delete | • Horizontal | • Maximize Windows | • Run... | • Universal Zoom |
| • Double Click | • Wheel | • Middle Button | • Shift Lock | • Up |

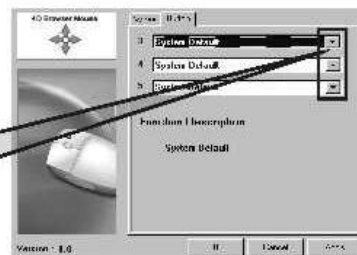


Figure 3-3-2

4. Battery and Charging Notice

- 1) Ni-MH rechargeable batteries are recommended for the mouse. At the first time of usage, please put the mouse with the batteries on the rechargeable mouse receiver for 6 to 8 hours for charging.
- 2) The LED indicator on the receiver will blink during the charging time.
- 3) The LED indicator or the scroll wheel on the mouse will turn to red light while the mouse is low battery. Please recharge the batteries immediately.
- 4) Recharge the batteries for 8 hours and the power can remain for 3 days.
- 5) Press any mouse button or move the scroll wheel to wake up the mouse while the mouse is in the sleeping mode.