

Before installing any software under Windows NT 4.0, we strongly recommend you create an Emergency Repair Disk using the Repair Disk utility provided by the system (RDISK.EXE).

Please note that USB mice are only supported under Windows 98, Windows 2000 and Windows ME.

### 3. Operation

After using the disk or CD to download the driver, there will be an icon in the start bar. While double click the icon, a Mouse Control Panel window shows up. You can choose any function you like for programmable buttons.

"A Mouse Control Panel" will show up in the start bar. Please double the icon.

#### A. Wheel: (See illustration 1)

##### a. Wheel Mode:

Choose system default (Intel - Mouse) mode or enhance scroll mode.

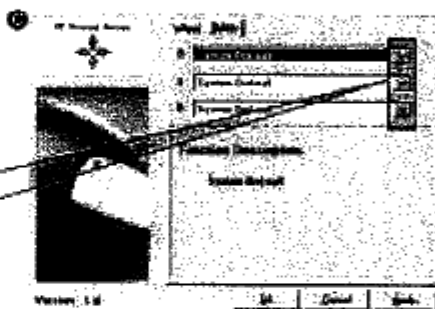
##### b. Wheel Speed:

Choose the speed of scrolling.

#### B. (Programmable) Buttons: (See illustration 2)

Choose which function you like to be.

System Default	Up	Find File	Close	Wheel
F1 - F10	Down	System Help	Application	Launch Default
Esc	Left	My Recent Places	Double Click	Browser Launch
Backspace	Right	My Computer	Mouse Click	Default E-mail
Insert	Undo	Wordpad	Window	IE Backward
Space	Redo	Run	Minimize	Universal Search
Delete	Cut	Start Menu	Window	Alt+Scroll
Page Up/Down	Copy	System Properties	Drag Lock	Universal Zoom
Tab	Paste	My Recent Places	Shift Lock	Customize Inceptor
Home	Explorer	My Computer	Control Lock	
End	Full Computer	Control Panel	Horizontal	



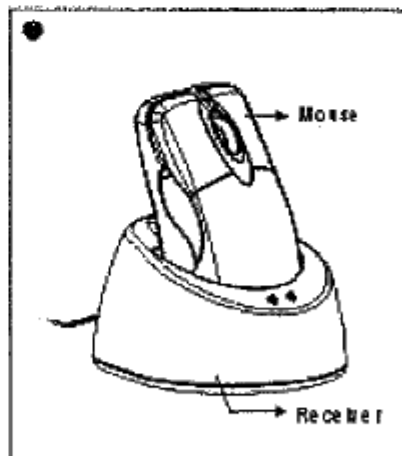
### 4. Charging (See illustration 3)

Put into the battery, and press mouse button. If there is red light in optical, recommend to put the mouse into the Receiver to charge the battery for 8 hours.

While charging the mouse, the Receiver Red LED light will blink quickly. After completing the charging, the blinking will be very slow. You can take off the mouse to work now.

#### Notice:

1. When there is low power or no power in mouse, the scrolling button will have Red LED light. Please charge the mouse immediately.
2. While the mouse is in sleeping mode, please press any button or move the scroll wheel to wake up.
3. If you have installed another mouse driver or mouse software, it must be deleted and restart the computer.



If you cannot eliminate the interference, the FCC requires that you stop using your device.

IT IS VIOLATION OF THE FCC REGULATIONS TO REMODEL OR ALTER THIS DEVICE IN ANYWAY WITHOUT PERMISSION ANYONE WHO VIOLATES THE REGULATIONS WILL LOSE THE RIGHT TO OPERATE THE DEVICE.