

Wireless Optical Mouse User's Guide

Notice:
Federal Communications Commission (FCC) requirements, Part 15
This equipment has been tested and found to comply with the limits for a class B digital device, pursuant to part 15 of the FCC Rules. These limits are designed to provide reasonable protection against harmful interference in a residential installation. This equipment generates, uses and can radiate radio frequency energy and, if not installed and used in accordance with the instructions, may cause harmful interference to radio communications. However, there is no guarantee that interference will not occur in a particular installation. If this equipment does cause harmful interference to radio or television reception, which can be determined by turning the equipment off and on, the user is encouraged to try to correct the interference by one or more of the following measures:
--Reorient or relocate the receiving antenna.
--Increase the separation between the equipment and receiver.
--Connect the equipment into an outlet on a circuit different from that to which the receiver is connected.
--Consult the dealer or an experienced radio/TV technician for help.

CAUTION: Any changes of modifications not expressly approved by the grantee of this device could void the user's authority to operate the equipment.

This device complies with Part 15 of the FCC Rules.
Operation is subject to the following two conditions: (1) this device may not cause harmful interference, and (2) this device must accept any interference received, including interference that may cause undesired operation.

Congratulations on your purchase of this Wireless Optical Mouse. Please carefully read the User's Guide to learn about the installation and the powerful functions of your new Wireless Optical Mouse.

1. Contents of the Package

- 1) Wireless Optical Mouse (one channel or two channels)
- 2) Receiver (PS/2, USB or UP Combo)
- 3) Two AA or AAA Batteries for the Mouse
- 4) Mouse Driver Disk or CD-ROM
- 5) User's Guide

Optional Parts for Wireless Optical Mouse

(The optional parts may be different due to various wireless optical mice.)

- 1) AC to DC Adaptor
- 2) USB to DC Cable

2. Install Hardware

2-1. Install the Receiver with PS/2 Connectors

- 1) Please turn off your PC.
- 2) Plug the PS/2 connector of the receiver into the PS/2 mouse port of the PC.

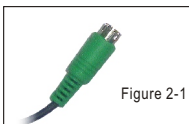


Figure 2-1

2-2. Install the Receiver with a USB Connector

- 1) You can turn on the PC before connect the USB connector with PC.
- 2) Plug the USB connector of the receiver into the USB mouse port of PC.



Figure 2-2

2-3. Install the Receiver with a USB to PS/2 Combo Connector

- 1) The combo connector is a USB connector with a USB to PS/2 adaptor.
- 2) Please check the mouse port of your PC. If the mouse port of the PC is USB, please plug the USB connector to the PC without using the USB to PS/2 adaptor.
- 3) If the mouse port of the PC is PS/2, please turn off the PC. Connect the USB connector with the USB to PS/2 adaptor, and then connect the receiver with the PC.



Figure 2-3

2-4. Select the Channel

Notice:

- Please skip this section if the mouse has only one channel.

- The location of the channel switch may be different due to various mouse shapes.
- There is a channel selector at the back of the receiver for some models. If so, please select the channel as same as the channel of the mouse.

- 1) The two-channel switch is located at the back of the mouse or inside the battery case. Select Channel "1" or "2".
- 2) Put the batteries into the battery box.

2-5. Link the Mouse with the Receiver

- 1) Turn on the PC. The LED indicator on the receiver will light.
- 2) Press the ID Link Button on the receiver and the LED indicator will blink. The receiver is ready to automatically link with the mouse.
- 3) Press the ID Link Button on the back of the mouse and the LED indicator on the receiver will blink quickly. The indicator will stay in light while successfully finish the linkage.
- 4) The LED indicator will blink while you move the mouse.
- 5) If you need to re-link the mouse or after changing the mouse batteries, please repeat the above linkage instructions.
- 6) If the selected channel is interfered by other wireless-mouse users nearby, please change the Link ID by re-linkage or select the other channel immediately.

3. Install Driver

3-1. Notice

- 1) The driver supports Windows 95, Windows 98, Windows NT, Windows 2000, Windows ME and Windows XP.
- 2) The USB interface is compatible with Windows 98, Windows 2000, Windows ME and Windows XP only.

3-2. Installation



- 1) Insert the driver disk or CD-ROM to your PC. The PC system may automatically install the driver through selecting the PC auto-install function.
- 2) If the PC system does not set the auto-install function, please double click the file "Setup.exe" and follow the setup instructions to complete the driver installation.
- 3) A Mouse Setting icon will appear on the taskbar of Windows after you successfully finish the installation.

3-3. Select Mouse Functions

- 1) Double click the Mouse Setting icon.
- 2) Follow the instructions of the selection items to set the button functions.

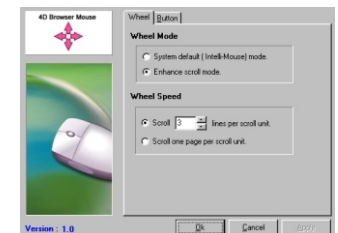
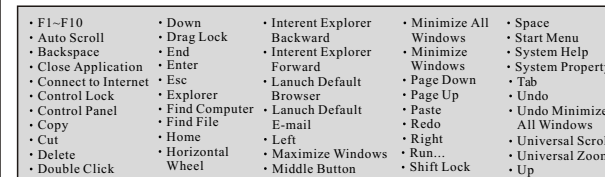


Figure 3-3-1

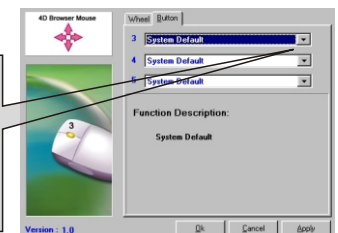


Figure 3-3-2

4. Optional Charging Modes for Wireless Optical Mouse

Notice:

- There are three charge modes for the rechargeable version. Please skip this section if your mouse is not rechargeable. Some mice may have only one or two charge modes.

- Please use rechargeable batteries for the chargeable mouse.

4-1. Power from PC

Connect the mouse to the USB port of PC with the USB to DC cable.

4-2. Power from Adaptor

Connect the mouse with the AC to DC adaptor.

4-3. Power from Cradle

The cradle must be connected with the required AC to DC adaptor in advance. Place the mouse on the cradle precisely.

5. Optical Sensor On and Off

Notice:

- This function is to save battery power by avoiding the undesired operation. For example, the button may be pressed or clicked while you carry the mouse to other work environment.

- Some wireless optical mice may not include this battery saving function.

- 1) Press and hold the wheel button and then press the Mouse Link Button. The optical sensor will be off.
- 2) Please follow the same instruction to power-on the optical sensor.

6. Charging Notice

- 1) Recommendation: please do not use the mouse during charge periods.
- 2) At the first time of usage, please charge the batteries at least 6 to 8 hours.
- 3) The LED indicator or the scroll wheel on the mouse will light while the mouse is low battery. Please recharge or change the batteries immediately.
- 4) Press any button to wake up the mouse while the mouse is in the sleeping mode.

Wireless Optical Mouse User's Guide