

Wireless Optical Mouse with Card Reader Receiver User's Guide

Notice:

Federal Communications Commission (FCC) requirements, Part 15
This equipment has been tested and found to comply with the limits for a class B digital device, pursuant to part 15 of the FCC Rules. These limits are designed to provide reasonable protection against harmful interference in a residential installation. This equipment generates, uses and can radiate radio frequency energy and, if not installed and used in accordance with the instructions, may cause harmful interference to radio communications. However, there is no guarantee that interference will not occur in a particular installation. If this equipment does cause harmful interference to radio or television reception, which can be determined by turning the equipment off and on, the user is encouraged to try to correct the interference by one or more of the following measures:
--Reorient or relocate the receiving antenna.
--Increase the separation between the equipment and receiver.
--Connect the equipment into an outlet on a circuit different from that to which the receiver is connected.
--Consult the dealer or an experienced radio/TV technician for help.

CAUTION: Any changes of modifications not expressly approved by the grantee of this device could void the user's authority to operate the equipment.

This device complies with Part 15 of the FCC Rules. Operation is subject to the following two conditions: (1) this device may not cause harmful interference, and (2) this device must accept any interference received, including interference that may cause undesired operation.

Congratulations on your purchase of this Wireless Optical Mouse with a Card Reader Receiver. Please carefully read the User's Guide to learn about the installation and the convenient and powerful functions of your new Wireless Optical Mouse with the Card Reader Receiver.

1. Contents of the Package

- 1) Wireless Optical Mouse (one channel or two channel)
- 2) Card Reader Receiver (2-in-1 or 4-in-1 version)
- 3) Two AA or AAA Batteries for the Mouse
- 4) CD-ROM for Mouse and Card Reader Drivers
- 5) User's Guide

Optional Parts for Wireless Optical Mouse

(The optional parts may be different due to various wireless optical mice.)

- 1) AC to DC Adaptor
- 2) USB to DC Cable

2. Install Hardware

2-1. Install the Card Reader Receiver

- 1) Please turn on your PC.
- 2) Plug the USB connector of the receiver into the USB port of the PC.



Figure 2-2

2-2. Select the Channel

- 1) Please skip this section if the mouse has only one channel. The location of the channel switch may be different due to various mouse shapes.
- 2) The two-channel switch is located at the back of the mouse or inside the battery case. Select Channel "1" or "2".
- 3) Put the batteries into the battery box.

2-3. Link the Mouse with the Receiver

- 1) The LED indicator on the receiver will light.
- 2) Press the Link Button on the receiver and the LED indicator will blink. The receiver is ready to automatically link with the mouse.
- 3) Press the Link Button on the back of the mouse and the LED indicator on the receiver will blink quickly. The indicator will stay in light while successfully finish the linkage.
- 4) The LED indicator will blink while you move the mouse.

- 5) If you need to re-link the mouse or after changing the mouse batteries, please repeat the above linkage instructions.
- 6) If the selected channel is interfered by other wireless-mouse users nearby, please change the Link ID by re-linkage or select the other channel immediately.

3. Install the Drivers

3-1. Notice

- 1) The driver supports Windows 98, Windows 2000, Windows ME and Windows XP.
- 2) The driver may be automatically installed.
- 3) The driver CD-ROM contains the drivers of the mouse and the card reader receiver. Please select to install the mouse or the card reader receiver driver at the pop-up window.

3-2. Install the Mouse Driver

- 1) Insert the driver CD-ROM to your PC.
- 2) If the driver does not be automatically installed, please double click the file "Setup.exe" and follow the setup instructions to complete the driver installation.
- 3) A Mouse Setting icon will appear on the taskbar of Windows after you successfully finish the installation.
- 4) You can double click the Mouse Setting icon and follow the selection instructions to set the mouse button functions.

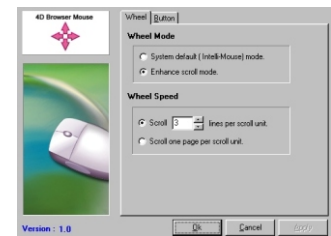


Figure 3-2-1

• F1-F10	• Down	• Internet Explorer	• Minimize All	• Space
• Auto Scroll	• Drag Lock	• Backward	• Windows	• Start Menu
• Backspace	• End	• Internet Explorer	• Minimize	• System Help
• Close Application	• Enter	• Forward	• Windows	• System Property
• Connect to Internet	• Esc	• Lanuch Default	• Page Down	• Tab
• Control Lock	• Explorer	• Browser	• Page Up	• Undo
• Control Panel	• Find Computer	• Lanuch Default	• Paste	• Undo Minimize
• Copy	• Find File	• E-mail	• Redo	• All Windows
• Cut	• Home	• Left	• Right	• Universal Scroll
• Delete	• Horizontal	• Maximize Windows	• Run...	• Universal Zoom
• Double Click	• Wheel	• Middle Button	• Shift Lock	• Up

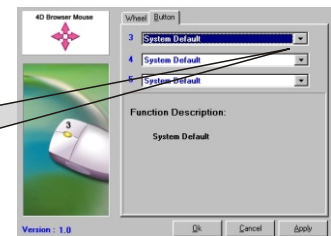


Figure 3-2-2

3-3. Select Mouse Functions

- 1) Double click the Mouse Setting icon.
- 2) Follow the instructions of the selection items to set the button functions.

3-4. Install the Driver for the Card Reader Receiver

Notice:

- 4-in-1 Card Reader Receiver: Compatible with CF, SM, MM and SD Cards.
- 2-in-1 Card Reader Receiver: Compatible with CF and SM cards.
- The PC system under Windows ME or Windows XP will automatically detect and install the card reader driver without operating the driver CD-ROM.

- 1) Insert the driver CD-ROM to your PC.
- 2) Windows 98 System: Please select the folder of Windows 98. Double click the file Msdriver.exe to install the card reader driver.
- 3) Windows 2000 System: Please select the folder of Windows 2000. Double click the file Win2000_driver_setup_v112.msi to install the card reader driver.
- 4) Data Transfer Rate (From Host) of the 4-in-1 Card Reader Receiver
 - Compact Flash Card (CF): 350KB/sec
 - Smart Media Card (SM): 250KB/sec
 - Multi Media Card (MM): 150KB/sec
 - Secure Digital Card (SD): 200KB/sec

4. Optional Charging Modes for Wireless Optical Mouse

Notice:

- There are two charge modes for the rechargeable version. Please skip this section if your mouse is not rechargeable.
- Some mice may have only one charge mode.
- Please use rechargeable batteries for the chargeable mouse.

4-1. Power from PC

Connect the mouse to the USB port of PC with the USB to DC cable.

4-2. Power from Adaptor

Connect the mouse with the AC to DC adaptor.

5. Battery and Charging Notice

- 1) At the first time of usage, please charge the batteries at least 6 to 8 hours.
- 2) The LED indicator or the scroll wheel on the mouse will light while the mouse is low battery. Please recharge the batteries immediately.
- 3) Press any button to wake up the mouse while the mouse is in the sleeping mode.
- 4) Recommendation: please do not use the mouse during charge periods.

**Wireless Optical Mouse
with Card Reader Receiver
User's Guide**