

#### 4. Battery Notice

- 1) The LED indicator or the scroll wheel on the mouse will light while the mouse is low battery. Please change the batteries immediately.
- 3) If the keyboard is in the status of low battery, the LED indicator on the keyboard will be light while typing any key and a low-battery icon will appear on the taskbar of Windows. Please change the batteries immediately.
- 4) Click any button of the keyboard or the mouse or press the scroll wheel to wake up the keyboard or the mouse while they are in the sleeping mode.

## Internet Wireless Keyboard Combo with Wireless Mouse User's Quick Guide

#### Notice:

Federal Communications Commission (FCC) requirements, Part 15

This equipment has been tested and found to comply with the limits for a class B digital device, pursuant to part 15 of the FCC Rules. These limits are designed to provide reasonable protection against harmful interference in a residential installation.

This equipment generates, uses and can radiate radio frequency energy and, if not installed and used in accordance with the instructions, may cause harmful interference to radio communications. However, there is no guarantee that interference will not occur in a particular installation. If this equipment does cause harmful interference to radio or television reception, which can be determined by turning the equipment off and on, the user is encouraged to try to correct the interference by one or more of the following measures:

- Reorient or relocate the receiving antenna.
- Increase the separation between the equipment and receiver.
- Connect the equipment into an outlet on a circuit different from that to which the receiver is connected.
- Consult the dealer or an experienced radio/TV technician for help.

**CAUTION:** Any changes or modifications not expressly approved by the grantee of this device could void the user's authority to operate the equipment.

This device complies with Part 15 of the FCC Rules. Operation is subject to the following two conditions: (1) this device may not cause harmful interference, and (2) this device must accept any interference received, including interference that may cause undesired operation.

**Congratulations on your purchase of the Combination of Internet Wireless Keyboard and Wireless Mouse. Please carefully read the User's Quick Guide to learn about the installation and the powerful functions of your new Internet Wireless Keyboard with Wireless Mouse.**

#### 1. Contents of Package

- 1) Internet Wireless Keyboard
- 2) Wireless Mouse
- 3) Receiver (with PS/2 connectors)
- 4) Two AA Batteries for Keyboard
- 5) Two AAA Batteries for Wireless Mouse
- 6) Driver CD-ROM
- 7) User's Quick Guide

#### 2. Install Hardware

##### Notice:

- The locations of the channel switch and the link button may be different due to various keyboard shapes.
- Some models may be designed as one-channel version, which will not have a channel switch.

##### 2-1. Install the Receiver with PS/2 Connectors

- 1) Please turn off your PC.
- 2) Plug the mouse PS/2 connector (green) on the receiver into the PS/2 mouse port of the PC.
- 3) Plug the keyboard PS/2 connector (purple) on the receiver into the PS/2 keyboard port of the PC.



Figure 2-1

##### 2-2. Select the Keyboard Channel

##### Notice:

- Please skip this section if the keyboard is the one-channel version.

- 1) The two-channel switch is located on the back of the keyboard. Select Channel "1" or "2".
- 2) Put the batteries into the battery case.

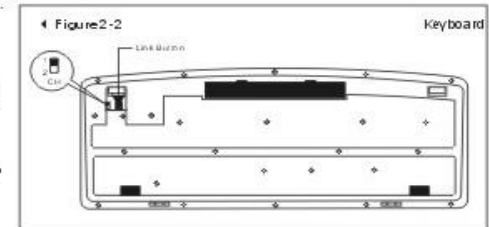


Figure 2-2

Keyboard

### 2-3. Select the Mouse Channel

#### Notice:

**- Please skip this section if the mouse is the one-channel version.**

- 1) The two-channel switch is located at the back of the mouse. Select Channel "1" or "2".
- 2) Put the batteries into the battery case.

### 2-4. Link the Wireless Keyboard and the Wireless Mouse with the Receiver

- 1) Please turn on your PC. The LED indicator on the receiver will light.
- 2) Press the ID Link Button on the receiver and the LED indicator will blink. The receiver is ready to automatically link with the keyboard and the mouse.
- 3) Press the ID Link Buttons of the keyboard and the mouse.
- 4) The LED indicator on the receiver is light while you successfully finish the keyboard and the mouse linkage.
- 5) The LED indicator of the receiver will blink while you use the keyboard or the mouse.
- 6) If you need to re-link the mouse, the keyboard or after changing the batteries, please repeat the steps 2~3.
- 7) If the selected channel is interfered by other wireless-mouse or keyboard users nearby, please change the Link ID by re-linkage or select the other channel immediately.
- 8) There are 256 changeable IDs for each channel.

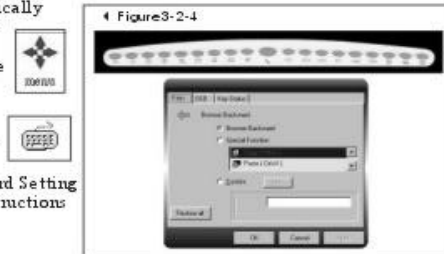
## 3. Install Driver

### 3-1. Notice

- 1) The driver supports Windows 95, Windows 98, Windows NT, Windows 2000, Windows ME and Windows XP.
- 2) The driver may be automatically installed.
- 3) The driver CD-ROM contains the drivers of the keyboard and the mouse. Please select to install the keyboard driver or the mouse driver at the pop-up window.

### 3-2. Install Keyboard Driver

- 1) Insert the driver CD-ROM to your PC.
- 2) If the driver does not be automatically installed, please double click the file "Mem1.exe" and follow the setup instructions to complete the driver installation.
- 3) A Keyboard Setting icon will appear on the taskbar of Windows after you successfully finish the installation.
- 4) You can double click the Keyboard Setting icon and follow the selection instructions to set the keyboard functions.



### 3-3. Introduction of Hot Keys

**Notice: The keyboard hot keys may be different due to various keyboard models. There are two versions of hot keys as below.**

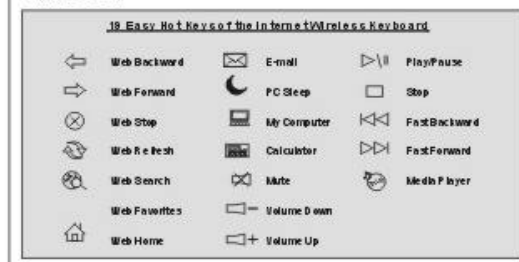
#### 1) Version I: 19 easy hot keys of Internet and Multimedia control

- (1) Web Backward
- (2) Web Forward
- (3) Web Stop
- (4) Web Refresh
- (5) Web Search
- (6) Web Favorites
- (7) Web Home
- (8) E-mail
- (9) PC Sleep

- (10) My Computer
- (11) Calculator
- (12) Mute
- (13) Volume Down
- (14) Volume Up
- (15) Play/Pause
- (16) Stop
- (17) Fast Backward
- (18) Fast Forward
- (19) MediaPlayer

- 2) Version II: 15 easy hot keys of Internet and Multimedia control
- (1) Web Home
- (2) E-mail
- (3) Web Backward
- (4) Web Forward
- (5) Web Search
- (6) Web Refresh
- (7) Web Favorites
- (8) Web Stop
- (9) Mute
- (10) Volume Down
- (11) Volume Up
- (12) Stop
- (13) Fast Backward
- (14) Play/Pause
- (15) Fast Forward

4 Figure 3-3-1



4 Figure 3-3-2



### 3-4. Install Mouse Driver

- 1) Insert the driver CD-ROM to your PC.
- 2) If the driver does not be automatically installed, please double click the file "Mem1.exe" and follow the setup instructions to complete the driver installation.
- 3) A Mouse Setting icon will appear on the taskbar of Windows after you successfully finish the installation.
- 4) You can double click the Mouse Setting icon and follow the selection instructions to set the mouse Button functions.



4 Figure 3-4-4



4 Figure 3-4-5