



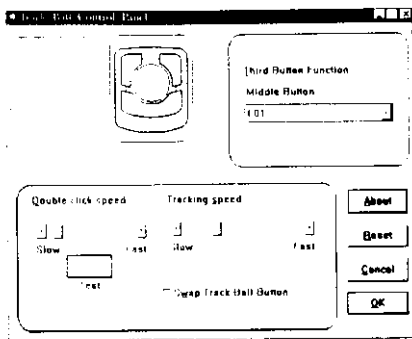
Blank Page

Don't Forget To Delete Me!

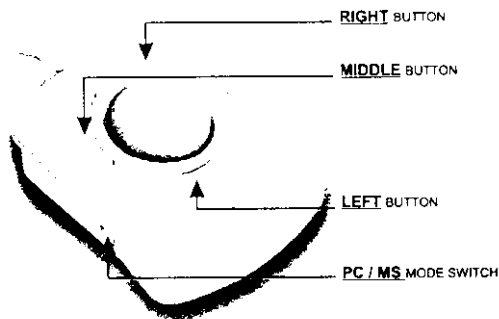
EXHIBIT C

User Manual

TEST PROGRAMMABLE:



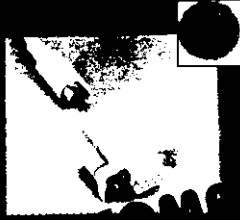
RIGHT HAND USER:



IMPORTANT INSTRUCTION

If change to Left Hand User, please turn off the computer first, and switch the Mode Switch (on the left side of the trackball) to PC mode, and use the attached Driver to re-locate the button positions. The positions will be: Left - > Left, Middle - > Right, Right - > Middle

YOUR MOUSE IS THIS VERSION:



PACKAGE INCLUDES:

- TRACKBALL
- MANUAL , INSTALLATION , AND THIRD BUTTON PROGRAMMABLE DRIVERS

TRACKBALL SPECIFICATION

HARDWARE:

VERSION:

Serial (Com 1) - D-type 9 pin female cable connector.

PS/2 - Din 6 pin round cable connector.

Combo - PS/2 cable connector, with a PS/2 (6 pin) to Serial (9 pin) Adapter.

COMPATIBILITY:

IBM PC / AT / 386 / 486 PENTIUM and compatibles.

BUTTON:

3 buttons, micro switch.

RESOLUTION:

300 dpi, dynamic.

TECHNOLOGY:

Opto-Mechanical.

BALL:

57 mm diameter, polyester.

SOFTWARE:

DRIVER:

Dos, Windows 3.1x, 95, Office 97.

PROGRAMMABLE:

Swap function - Left hand user adjustable.

Adjustable Trackball speed.

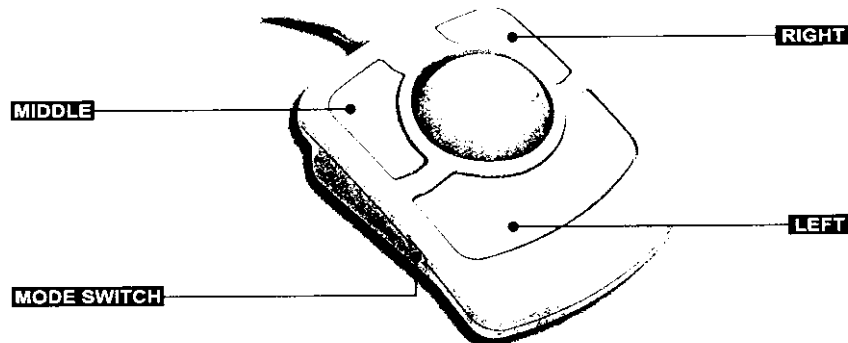
Adjustable double click speed.

Third button functions programmable.

FCC CE

IMPORTANT INSTRUCTION

For Right Hand User, the button positions will be as below:



If change to Left Hand User, please turn off the computer first, and switch the Mode Switch (on the left side of the trackball) to PC mode, and use the attached Driver to re-locate the button positions. The positions will be:

Left - > Left, Middle - > Right, Right - > Middle