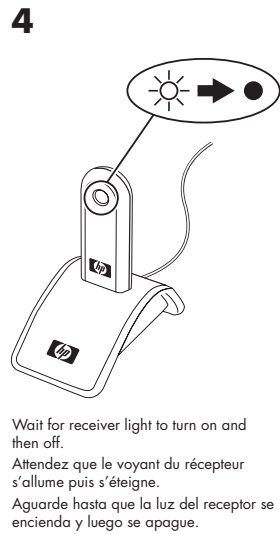
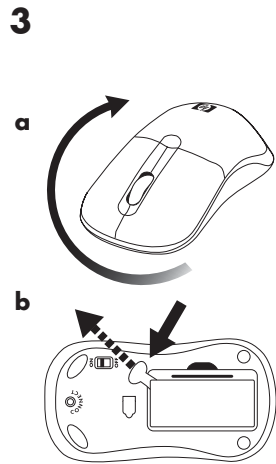
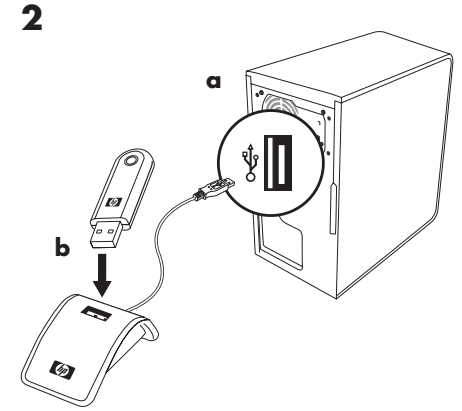
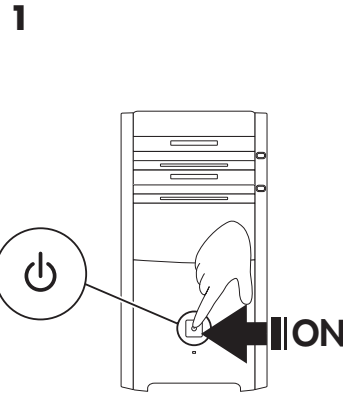
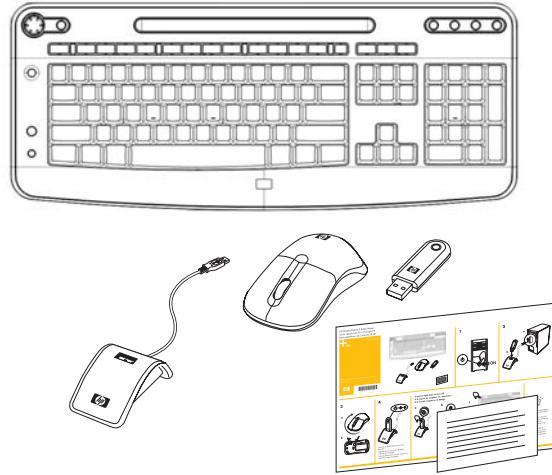


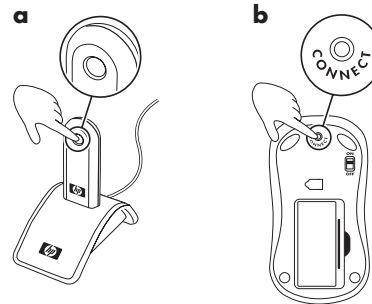
HP Wireless Optical 3 Button Mouse  
Souris optique sans fil à 3 boutons HP  
Ratón inalámbrico de 3 botones de HP

Product Number: XXXXXXX

Copyright © 2006 Hewlett-Packard Development Company, L.P.  
Printed in China

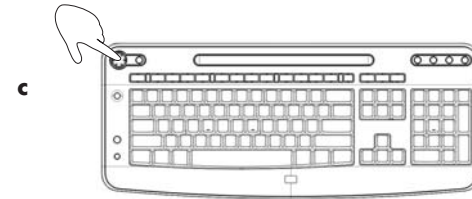


**If receiver light does not turn off:**  
**Si le voyant du récepteur ne s'éteint pas :**  
**Si la luz del receptor no se apaga:**

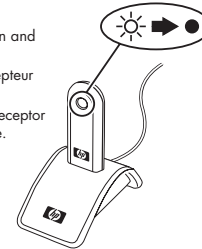


Federal Communications Commission (FCC) requirements, Part 15  
This equipment has been tested and found to comply with the limits for a class B digital device, pursuant to part 15 of the FCC Rules. These limits are designed to provide reasonable protection against harmful interference in a residential installation.  
This equipment generates, uses and can radiate radio frequency energy and, if not installed and used in accordance with the instructions, may cause harmful interference to radio communications. However, there is no guarantee that interference will not occur in a particular installation. If this equipment does cause harmful interference to radio or television reception, which can be determined by turning the equipment off and on, the user is encouraged to try to correct the interference by one or more of the following measures:  
-Reorient or relocate the receiving antenna.  
-Increase the separation between the equipment and receiver.  
-Connect the equipment into an outlet on a circuit different from that to which the receiver is connected.  
-Consult the dealer or an experienced radio/TV technician for help.  
This device complies with Part 15 of the FCC Rules. Operation is subject to the following two conditions:  
(1) This device may not cause harmful interference.  
(2) This device must accept any interference received, including interference that may cause undesired operation.

Any changes or modifications (including the antennas) made to this device that are not expressly approved by the manufacturer may void the user's authority to operate the equipment.



**d** Wait for receiver light to turn on and then off.  
Attendez que le voyant du récepteur s'allume puis s'éteigne.  
Aguarde hasta que la luz del receptor se encienda y luego se apague.



**Tip:** Change mouse batteries when light near scroll wheel turns on.

**Conseil utile :** lorsque le voyant près de la molette de défilement s'allume, remplacez les piles de la souris.

**Consejo:** Cuando se enciende la luz junto a la rueda de desplazamiento, cambie las pilas del ratón.