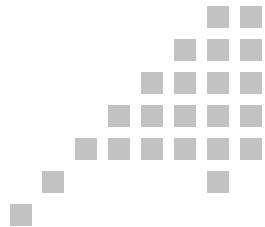


OfficeMouse®

User's Quick Guide

The logo features the text "OfficeMouse" in a serif font, with a registered trademark symbol (®) to its upper right. To the left of the text is a graphic of a mouse cursor arrow, composed of a grid of small gray squares. The arrow points towards the top-right. Below the main text, the words "User's Quick Guide" are written in a smaller, sans-serif font.

2004 All Rights Reserved. The copyright is the property of its respective owners.

Federal Communications Commission (FCC) requirements, Part 15
This equipment has been tested and found to comply with the limits for a class B digital device, pursuant to part 15 of the FCC Rules. These limits are designed to provide reasonable protection against harmful interference in a residential installation. This equipment generates, uses and can radiate radio frequency energy and, if not installed and used in accordance with the instructions, may cause harmful interference to radio communications. However, there is no guarantee that interference will not occur in a particular installation. If this equipment does cause harmful interference to radio or television reception, which can be determined by turning the equipment off and on, the user is encouraged to try to correct the interference by one or more of the following measures:

- Reorient or relocate the receiving antenna.
- Increase the separation between the equipment and receiver.
- Connect the equipment into an outlet on a circuit different from that to which the receiver is connected.
- Consult the dealer or an experienced radio/TV technician for help.

CAUTION: The batteries may explode or leak if they are improperly recharged, inserted, disposed in fire or mixed with used or different battery types.

Note: The manufacturer is not responsible for any radio or tv Interference caused by unauthorized modifications to this equipment. Such Modifications could void the user's authority to operate the equipment.

This device complies with Part 15 of the FCC Rules. Operation is subject to the following two conditions: (1) this device may not cause harmful interference, and (2) this device must accept any interference received, including interference that may cause undesired operation.

CE Declaration Of Conformity

Hereby, the manufacturer declares that this Office Wireless Optical Mouse is in compliance with the essential requirements and other relevant provisions of Directive 1999/5/EC.

Essential requirements-Article 3

Protection requirements for health and safety-Article 3.1a

-- Testing for electric safety according to EN 60950 has been conducted. These are considered relevant and sufficient.

Protection requirements for electromagnetic compatibility-Article 3.1b

-- Testing for electromagnetic compatibility according to EN 301 489-1 and EN 301 489-03 has been conducted. These are considered relevant and sufficient.

Effective use of the radio spectrum - Article 3.2

-- Testing for radio test suites according to EN 300 220-3 has been conducted. These are considered relevant and sufficient.

Caution: May explode or leak if recharged, inserted improperly, disposed of in fire or mixed with used or different battery types.

Congratulations on your purchase of this Office Mouse. Please carefully read the User's Quick Guide to learn about the installation and the powerful functions of your new Office Mouse.

Package Content

Office Mouse (Wireless Optical or Wired Optical)

Mouse Driver CD-ROM

User's Quick Guide

Parts for Office Wireless Optical Mouse:

- Charging Receiver
- AC to DC Adapter
- USB to DC Cable (Optional)
- Two AA or AAA Ni-MH Rechargeable Batteries

Install Hardware

Note:

- If you install a wired Office mouse, please skip the sections of "Install Receiver", "Select Mouse Channel" and "Link Mouse and Receiver".
- If you install a wireless Office mouse, please skip the section "Install Wired Mouse".
- Some wireless optical mouse models may be designed as the one-channel version, which will not have a channel switch, please skip the channel-setting step.
- If you are running Windows 98 and plug the connector into the computer, you may find a pop-up window that requires to insert the Windows 98 CD-ROM. Please follow the window instruction to install the required driver or set the driver path as "Windows\system" or the other path that the driver located.

Install Wired Mouse

- 1) PS/2 Version: Please turn off the computer → Plug the PS/2 connector of the mouse to the computer.
- 2) USB Version: You may turn on the computer → Plug the USB connector of the mouse to the computer.
- 3) USB to PS/2 Version: Turn off the computer → Plug the adapter of the USB to PS/2 to the mouse USB connector → Connect to the computer.

Install Receiver

- 1) PS/2 Version: Please turn off the computer → Plug the PS/2 connector of the receiver to the computer.
- 2) USB Version: You may turn on the computer → Plug the USB connector of the receiver to the computer.
- 3) USB to PS/2 Version: Turn off the computer → Plug the USB to PS/2 adapter to the receiver USB connector → Connect the PS/2 connector to the PS/2 port of the computer.

Select Mouse Channel

- 1) The two-channel switch is located at the back of the mouse or inside the battery case. Select Channel "1" or "2".
- 2) Put the batteries into the battery case.

Link Mouse with Receiver

Note:

- Please link the mouse within the effective distance.
 - The linkage period is 15 seconds. Once press the receiver's Link Button, please complete the mouse linkage process within the linkage period.
- 1) Please turn on your PC. The LED indicator on the receiver will light.
 - 2) Press the ID Link Button on the receiver and the LED indicator will blink. There are 15 seconds for the mouse linkage.
 - 3) Press the ID Link Button of the mouse.
 - 4) The mouse is linked with the receiver.
 - 5) The LED indicator of the receiver will blink while you use the mouse.
 - 6) The Office Mouse designs with the unique Smart Link function. Once the

linkage process is complete, you don't have to re-link the mouse even if you change batteries or restart the computer.

- 7) If the mouse does not link with the receiver, please repeat Step 1~3.
- 8) If the selected channel is interfered by other wireless-mouse users nearby, please change the Link ID by re-linkage or select the other channel immediately.
- 9) There are 256 changeable IDs for a mouse channel.

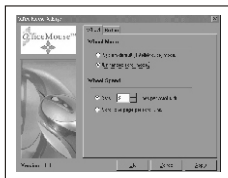
Install Software

Note:

- The driver supports Windows 98, Windows NT, Windows 2000, Windows ME and Windows XP.
- When you change the interface port, please reinstall the driver.

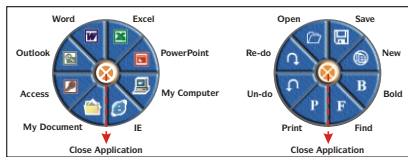
Install Driver

- 1) Insert the driver CD-ROM to your computer.
The PC system may automatically install the driver through selecting the PC auto-install function.
- 2) If the PC system does not set the auto-install function, please double click the file "Setup.exe" and follow the setup instructions to complete the driver installation.
- 3) Restart the computer.
- 4) A Mouse Setting icon will appear on the task bar of Windows after you successfully finish the installation.
- 5) Double click the Mouse Setting icon and then follow the instructions of the selection items to set the mouse properties.

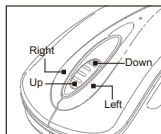


Introduce Office Application Software & 4-way Navigating Function

- You can simply apply the Office application functions through the one-touch hot key on the top of the Office mouse.



- There are two navigating function keys to work with the scroll wheel. You may easily view whole documents through the scroll wheel controlling up and down and the two navigating keys controlling right and left.



Uninstall Driver

Mouse Software can be removed from Windows by clicking the Add/Remove Programs icon in the Control Panel or clicking the "Uninstall" icon in the folder that "Setup.exe" created in "Programs" of "Start" on Windows desktop. Select Mouse Software installed and click the "Remove" button.

Charge Mod

Note:

- Please skip this section if the mouse is wired.
 - Please skip this section if your mouse is not rechargeable.
 - Some mice may have only one charge mode.
 - Please use rechargeable batteries for the chargeable mouse. At the first time of usage, please charge the AAA batteries at least 6 to 8 hours and 10 to 12 hours for AA batteries.
- 1) Charge from Cradle: The receiver cradle must be connected with the required AC-to-DC adapter in advance and then place the mouse on the cradle precisely.
 - 2) Charge through the USB-to-DC Cable: Connect the cable with the mouse and then plug the USB connector of the cable to the PC.
 - 3) Charge through the AC-to-DC Adapter: Connect the adapter's DC jack to the mouse for charging.

Notification

The wireless equipment is intended for use in the following countries.

18 European Countries:

Austria, Belgium, Denmark, Finland, France, Germany, Greece, Iceland, Ireland, Italy, Luxembourg, Netherlands, Norway, Portugal, Spain, Sweden, Switzerland and United Kingdom. Please do not change the frequency, features and functions of wireless mice from the original design.

The LED indicator on the receiver will light while the mouse is low battery.

Please recharge or change the batteries immediately.

Press any button to wake up the mouse while the mouse is in the sleeping mode.

The optical technology can precisely detect the mouse motion on most surfaces. Please avoid using the optical mouse on any reflection, transparent or complex-pattern surface.

Please avoid using the mice under the following conditions.

- Direct sunlight

- Extreme hot, cold, dusty or magnetic environment
- Near by fax machine, television, radio, mobile phone or any wireless device
- Metal surface

Notices for wireless mice:

- Install the driver properly.
- Check the distance between the mouse and the receiver. (The operation distance is 1 meter.)
- Place the positive and the negative of the battery in the right direction.
- Link the mouse with the receiver properly.

If the wireless product is malfunction, please change or recharge the batteries, or move the receiver away from the computer and the monitor. While not click the Office hot key, the Office pop-up window appears and there is no any reaction from the right button. Please eliminate the situation by repeatedly clicking the Office hot key.

Trouble Shooting

Question 1: No mouse movement.

Solution:

- 1) Make sure the software that you are using supports a mouse.
- 2) Check that mouse is plugged into serial port at the back of computer.
- 3) Ensure that mouse driver is installed into system.

Question 2: The cursor on the screen remains at one spot or moves erratically.

Solution:

Check the mouse cable for any breaks or sharp twists. Examine the cable closely where it connects to the mouse.

Question 3: The cursor movement stops at a corner and no longer responds to the mouse movement.

Solution:

- 1) Run the mouse driver to check which mode the mouse is operating in.
- 2) If the mouse is wireless, please check the battery power or re-link the mouse.

Question 4: Mouse movement does not produce corresponding cursor movement or there is a brief pause during movement.

Solution:

- 1) Check the connector or the cables of the mouse and the receiver if there is any break or tangled.
- 2) If the mouse is wireless, please check the distance between the mouse and the receiver.

Question 5: Displayed error number-115 on screen when install mouse driver software.

Solution:

- 1) The error usually occurs because a virus-checking program is being used on the System to prevent files from being renamed. Please shutdown any virus checking software running on the system and then run the setup again.

Question 6: Detection problems of the mouse

Solution: If your mouse is connected to the mouse port and is not detected by the system, attempt the following step(s):

- 1) Please check the mouse port setting from the computer.
- 2) If you have a mouse with a mouse port adapter, please connect the mouse to the computer through the mouse port adapter. Restart the computer and check if the mouse is detected properly.
- 3) If the mouse port adapter is not included in your package, your mouse was designed to work on only one type of ports (PS/2 or USB). Please check the mouse port setting from the computer.
- 4) If the problem persists, please check for a possible computer BIOS ROM upgrade from your computer manufacturer.
- 5) Some notebook systems, such as IBM Thinkpad, have both an external Mouse Port and an integrated Pointing Stick, which is connected to the Mouse Port. If your mouse is having difficulty running on the Mouse Port of this type of system, please other ports.

Question 7: Conflicts with other Devices

Solution:

Some softwares, provided by other manufacturers, include mouse functions, which may conflict with the Office mouse. We recommend you to remove the software installed previously and then install the Office mouse software.

Question 8: Too much interference to wireless mice

Solution:

- 1) Change the location of the receiver.
- 2) Please remain a certain distance from other high-voltage or wireless devices.

Question 9: Problems of operating the wheel

Solution:

- 1) Verify that the "Browser Mouse" or "Mouse Control Panel" application is installed properly. If you do not find the "Browser Mouse" or "Mouse Control Panel" icon in the system tray, you need to reinstall mouse software.
- 2) Please install the mouse driver while the OS is under Windows 98.
- 3) Some other applications with mouse scrolling function may conflict with this mouse function. Remove these applications before install the Office mouse software.

Question 10: You do not click the Office hot key but the selection menu appears. Besides, there is no any reaction from the right button.

Solution: The situation can be eliminated by repeatedly clicking the Office hot key.

Wireless Mouse Patents

- **Wireless Mouse and Stand Body:** Taiwan 078386, China 01360042.7, Germany 401 06 575.8, and USA Pending
- **Improved Structure of Wireless Mouse System:** Taiwan 89222812, China 01100419.3, Germany 201 12 178.6 and USA Pending
- **Wireless Mouse Recharge System:** Taiwan 90104125, China 01109443.5, Germany 20112177.8, USA Pending
- **Multiple Recharge System:** Taiwan 90115187, China 01120050.2, Germany 20201110.0, USA Pending
- **Office Mouse New Shape and Logo:** Taiwan 091304854, 091004289; China 02344864.4, Pending; Germany 40301451.4, Pending; USA 29/ 176.651, Pending