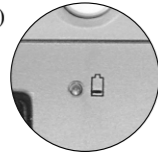


▶/	<b>Play/Pause</b>	Play or Pause media. Once paused, press this key again to resume playing.
■	<b>Stop</b>	Stop playing media.
🔊+	<b>Volume up</b>	Increase the volume. Hold down to increase the volume more quickly.
🔊-	<b>Volume down</b>	Decrease the volume. Hold down to decrease the volume more quickly.
🔇	<b>Mute</b>	Turn off the sound. Press again to turn the sound back on.
⏮	<b>Pre Track</b>	Switch to the previous media track. Press once for each preceding track.
⏭	<b>Next Track</b>	Switch to the next media track. Press once for each subsequent track.

**LED Indicator**  
(Specially designed for low-battery notice.)



#### Mouse Charge Mode (Option)

**Note:**

- Please skip this section if your mouse is not rechargeable.
- Please use rechargeable batteries for the chargeable mouse.
- At the first time of usage, please charge the AA batteries at least 10 to 12 hours or 6 to 8 hours for the AAA batteries.

Charge from the Cradle: The receiver cradle must be connected with the required AC-to-DC adapter in advance and then place the mouse on the cradle precisely.

Charge through the USB-to-DC Cable: Connect the cable with the mouse and then plug the USB connector of the cable to the PC.

Charge through the AC-to-DC Adapter: Connect the adapter's DC jack to the mouse for charging.

#### Notification

This equipment is intended for use in the following countries.

18 European Countries:

Austria, Belgium, Denmark, Finland, France, Germany, Greece, Iceland, Ireland, Italy, Luxembourg, Netherlands, Norway, Portugal, Spain, Sweden, Switzerland and United Kingdom.

For Wireless Optical Mouse: The optical technology can precisely detect the mouse motion on most surfaces. Please avoid using the optical mouse on any reflective, transparent, metallic or complex-pattern surface.

Recommendation: please do not use the mouse during charge periods.

The low-battery indicator or the scroll wheel on the mouse will light while the mouse is low battery. Please recharge or change the batteries immediately.

Press any button to wake up the keyboard or the mouse while they are in the sleeping mode.

The low-battery LED indicator will light while the keyboard is in the status of low battery and a low-battery icon will appear on the taskbar of Windows. Please change the batteries immediately.

If the product is malfunction, please change or recharge the batteries, or move the receiver away from the computer and the monitor at least 20 cm.

If the keyboard or the mouse does not work properly, please make sure the PS/2 or the USB port of the computer is valid. Besides, check the connector or the cable of the receiver if there is broken or tangled. Please avoid using the keyboard and the mouse under direct sunlight, extreme hot, cold or dusty

#### Wireless Mouse Patents

- Wireless Mouse and Stand Body: Taiwan 078386, China 01360042.7, Germany 401 06 575.8, and USA Pending
- Improved Structure of Wireless Mouse System: Taiwan 89222812, China 01100419.3, Germany 201 12 178.6 and USA Pending
- Wireless Mouse Recharge System: Taiwan 90104125, China 01109443.5, Germany 20112177.8, USA Pending
- Multiple Recharge System: Taiwan 90115187, China 01120050.2, Germany 20201110.0, USA Pending

PMU-CKM00108 / Made in China

## Multimedia Wireless Keyboard Combo with Wireless Optical Mouse or Wireless Mouse

### User's Quick Guide

2004 All Rights Reserved. The copyright is the property of its respective owners.

#### Federal Communications Commission (FCC) requirements, Part 15

This equipment has been tested and found to comply with the limits for a class B digital device, pursuant to part 15 of the FCC Rules. These limits are designed to provide reasonable protection against harmful interference in a residential installation. This equipment generates, uses and can radiate radio frequency energy and, if not installed and used in accordance with the instructions, may cause harmful interference to radio communications. However, there is no guarantee that interference will not occur in a particular installation. If this equipment does cause harmful interference to radio or television reception, which can be determined by turning the equipment off and on, the user is encouraged to try to correct the interference by one or more of the following measures:

- Reorient or relocate the receiving antenna.
- Increase the separation between the equipment and receiver.
- Connect the equipment into an outlet on a circuit different from that to which the receiver is connected.
- Consult the dealer or an experienced radio/TV technician for help.

CAUTION: Any changes of modifications not expressly approved by the grantee of this device could void the user's authority to operate the equipment.

This device complies with Part 15 of the FCC Rules. Operation is subject to the following two conditions: (1) this device may not cause harmful interference, and (2) this device must accept any interference received, including interference that may cause undesired operation.

#### CE Declaration Of Conformity

Hereby, the manufacturer, declares that this Office Wireless Keyboard Combo with Wireless Mouse is in compliance with the essential requirements and other relevant provisions of Directive 1999/5/EC. Essential requirements - Article 3 Protection requirements for health and safety - Article 3.1a --Testing for electric safety according to EN 60950 has been conducted. These are considered relevant and sufficient. Protection requirements for electromagnetic compatibility -Article 3.1b --Testing for electromagnetic compatibility according to EN 301 489-1, EN 301 489-17 and EN 55024 has been conducted. These are considered relevant and sufficient. Effective use of the radio spectrum -Article 3.2 --Testing for radio test suites according to EN 300 328-2 has been conducted. These are considered relevant and sufficient.

**Congratulations on your purchase of the Multimedia Wireless Keyboard Combo featured with the unique Smart Link function. Please carefully read the User's Quick Guide to learn about the installation and the powerful functions of your new Multimedia Wireless Keyboard and Mouse.**

#### Contents of Package

- Multimedia Wireless Keyboard
- Wireless Optical Mouse or Wireless Mouse
- Receiver
- Keyboard Battery: AA \* 2
- Mouse Battery: AA \* 2 or AAA \* 3
- AC to DC Adapter (Option)
- USB-to-DC Cable (Option)
- USB-to-PS/2 Adapter (Option)
- Driver CD-ROM
- User's Quick Guide

#### Install Hardware

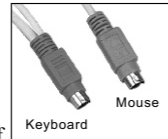
**Note:**

- Please select the instruction section for the connector type of the keyboard and the mouse.
- The locations of the channel switch and the link button may be different due to various keyboard and mouse shapes.
- Some models may be designed as one-channel version, which will not have a channel switch, please skip the channel-setting step.

- If you are running Windows 98 and plug the connector into the computer, you may find a pop-up window that requires to insert the Windows 98 CD-ROM. Please follow the window instruction to install the required driver or set the driver path as "Windows\system" or the other path that the driver located.

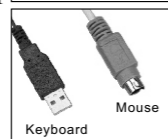
Install the Receiver with PS/2 Connectors

- 1) Please turn off your PC.
- 2) Plug the mouse PS/2 connector on the receiver into the PS/2 mouse port of the PC.
- 3) Plug the keyboard PS/2 connector on the receiver into the PS/2 keyboard port of the PC.



Install the Receiver with PS/2 (Mouse) and USB (Keyboard) Connectors

- 1) Please turn off your PC.
- 2) Plug the mouse PS/2 connector on
- 3) Plug the keyboard USB connector on the receiver into the USB port of the PC.



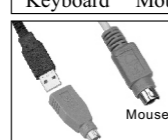
Install the Receiver with USB Connector

- 1) You may only connect the USB connector of the receiver to the PC without plugging the mouse PS/2 connector.



Install the Receiver with PS/2 (Mouse) and UP (Keyboard) Connectors

- 1) Please turn off your PC.
- 2) Plug the mouse PS/2 connector on the receiver into the PS/2 mouse port of the PC.
- 3) Connect the USB-to-PS/2 adapter with the keyboard USB connector of the receiver. Plug the adapter into the keyboard PS/2 port of the PC.

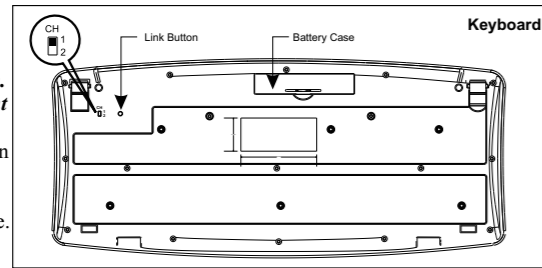


Select the Keyboard Channel

Note:

- Please skip this section if the keyboard is the one-channel version.
- The keyboard shape may be different from the keyboard diagram.

- 1) The two-channel switch is located on the back of the keyboard. Select Channel "1" or "2".
- 2) Put the batteries into the battery case.



Select the Mouse Channel

Note:

- Please skip this section if the mouse is the one-channel version.
- The mouse shape may be different from the mouse diagram.

- 1) The two-channel switch is located at the back of the mouse. Select Channel "1" or "2".
- 2) Put the batteries into the battery case.

Link the Wireless Keyboard and the Wireless Mouse with the Receiver

Note:

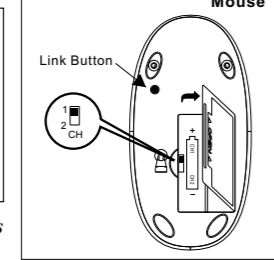
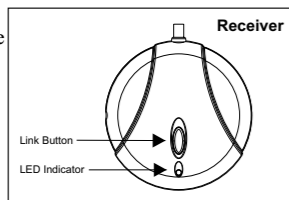
- Please link the keyboard and the mouse within the effective distance.

- The linkage period is 15 seconds.

Once press the receiver's Link Button, please complete the keyboard or the mouse linkage process within the linkage period.

- The receiver shape may be different from the receiver diagram.

- 1) Please turn on your PC. The LED indicator on the receiver will light.
- 2) Press the ID Link Button on the receiver and the LED indicator will blink. There are 15 seconds



the keyboard linkage.

- 3) Press the ID Link Button of the keyboard.
- 4) Press again the ID Link Button on the receiver. There are 15 seconds for the mouse linkage.
- 5) Press the ID Link Button of the mouse.
- 6) The keyboard and the mouse are linked with the receiver.
- 7) The LED indicator of the receiver will blink while you use the keyboard or the mouse.
- 8) The keyboard mouse set designs with the unique Smart Link function. Once the linkage process is complete, you don't have to re-link the keyboard and the mouse even if you change batteries or restart the computer.
- 9) If the keyboard or the mouse does not link with the receiver, please repeat Step 2~3 or Step 4~5.
- 10) If the selected channel is interfered by other wireless-mouse or keyboard users nearby, please change the Link ID by re-linkage or select the other channel immediately.
- 11) There are 256 changeable IDs for each channel.

### Install Mouse Driver

Note:

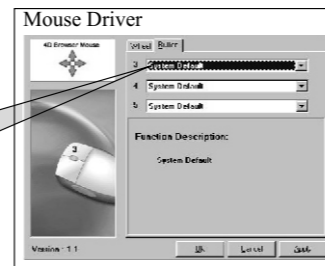
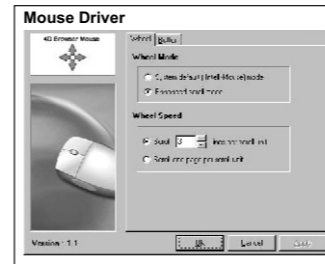
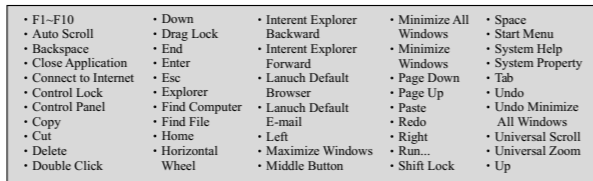
- The driver supports Windows 95/ 98/ NT/ 2000/ ME and XP.
- The CD-ROM contents the drivers of the keyboard and the mouse. Please select to install the mouse driver at the pop-up window.
- When you change the interface port, please reinstall the driver.

Install Driver

- 1) Insert the driver CD-ROM to your computer. The PC system may automatically install the driver through selecting the PC auto-install function.
- 2) If the PC system does not set the auto-install function, please double click the file "Setup.exe" and follow the setup instructions to complete the driver installation.



- 3) Restart the computer. A Mouse Setting icon will appear on the task bar of Windows after you successfully finish the installation.

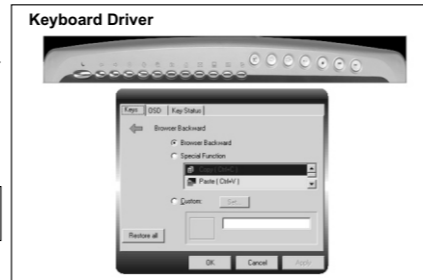


### Install Keyboard Driver

Note:

- The driver supports Windows 95/ 98/ NT/ 2000/ ME and XP.
- The CD-ROM contents the drivers of the keyboard and the mouse. Please select to install the keyboard driver at the pop-up window.
- When you change the interface port, please reinstall the driver.

- 1) Remove any existing keyboard drivers completely.
- 2) Insert the driver CD-ROM to your computer.
- 3) Please open the folder "Keyboard" and double click the file "Setup.exe" to complete the driver installation.
- 4) Restart the computer. A Keyboard Setting icon will appear on the task bar of Windows.



- 5) Double click the icon to set the programmable hot keys.

### Introduction of Hot Keys

19 useful multimedia hot keys provide a timesaving way to access Web/ Internet shortcuts and PC/ multimedia control.

#### PC Hot Keys

(Calculator, My Computer and PC Sleep)

	<b>PC Sleep</b>	Put the system into sleep mode if the PC supports power management and has it enabled. The user can put the computer to sleep at the press of any button, protecting data and saving energy. If power management is not enabled, this key will not work.
	<b>My computer</b>	Open My Computer. My computer shows the contents of your floppy disk, hard disk, CD-ROM drive and network drives. You can also search for and open files and folders, and gain access to options in Control Panel to modify the computer's settings.
	<b>Calculator</b>	Start Microsoft Calculator.

#### Web & Internet Hot Keys

(Web Page Backward, Web Page Forward, Web Stop, Web Refresh, Web Search, E-mail, Web Home and My Favorites)

	<b>Web Backward</b>	Go back to the previously viewed item in programs that support the "Back" command, such as a Web browser.
	<b>Web Forward</b>	Go to the next item - if it was previously viewed in the same session - in programs that support the "Forward" command, such as a Web browser.
	<b>Web Stop</b>	Stop loading or refreshing a Web page or the contents of a particular window.
	<b>Home</b>	Start the default Web browser or go to the Home Web page. If the Web browser is already activated it opens the Home Web page. You can reassign the Home key to start another Web browser, another Home Web page or another application.
	<b>Email</b>	Start the default e-mail program. If you are not sure what the default e-mail program is, press this key to find out. You can reassign the Email key to start another e-mail program or another application.
	<b>My Favorite</b>	Open the Internet Explorer Favorites pane. This is where you can store shortcuts to frequently used files, websites or other items for easy access.
	<b>Web Refresh</b>	Update the information on an active Web page or the contents of a particular window.
	<b>Web Search</b>	Open the Internet Explorer Search pane.

#### Multimedia Hot Keys

(Totally control Media Player, Play/Pause, Volume Up, Volume Down, Pre Track, Next Track, Mute and Stop)

	<b>Media Player</b>	Play CD and media content.
--	---------------------	----------------------------