

Dell Wireless Mouse and Keyboard KM7120W

User's Guide

Combo set model: KM7120W
Regulatory model: KB7120Wc/ MS5320Wc/ RG-1216



Notes, cautions, and warnings



NOTE: A NOTE indicates important information that helps you make better use of your computer.



CAUTION: A CAUTION indicates either potential damage to hardware or loss of data and tells you how to avoid the problem



WARNING: A WARNING indicates a potential for property damage, personal injury, or death.

Copyright © 2019 Dell Inc. All rights reserved. This product is protected by U.S. and international copyright and intellectual property laws. Dell™ and the Dell logo are trademarks of Dell Inc. in the United States and/or other jurisdictions. All other marks and names mentioned herein may be trademarks of their respective companies.

2019- 10

Rev. A00

Contents

- Notes, cautions, and warnings 2
- What’s in the box 5
- Features 6
 - Mouse 6
 - Top view 6
 - Bottom view 7
 - Keyboard 8
 - Top view 8
- Setting up your wireless mouse 9
 - Installing batteries 9
 - Pairing your wireless mouse 12
 - Pairing with a USB device 12
 - Pairing with a Bluetooth device 13
- Setting up your wireless keyboard 17
 - Pairing your wireless keyboard 19
 - Pairing with a USB device 19
 - Pairing with a Bluetooth device 20
- Dell Universal Receiver feature for Windows 23
- Troubleshooting 24
 - &RPPRQ 6\PSWRPV 24

)UHTXHQWO\ \$VNHG TXHVWLRQV28

Specifications32

Statutory information34

Warranty 34

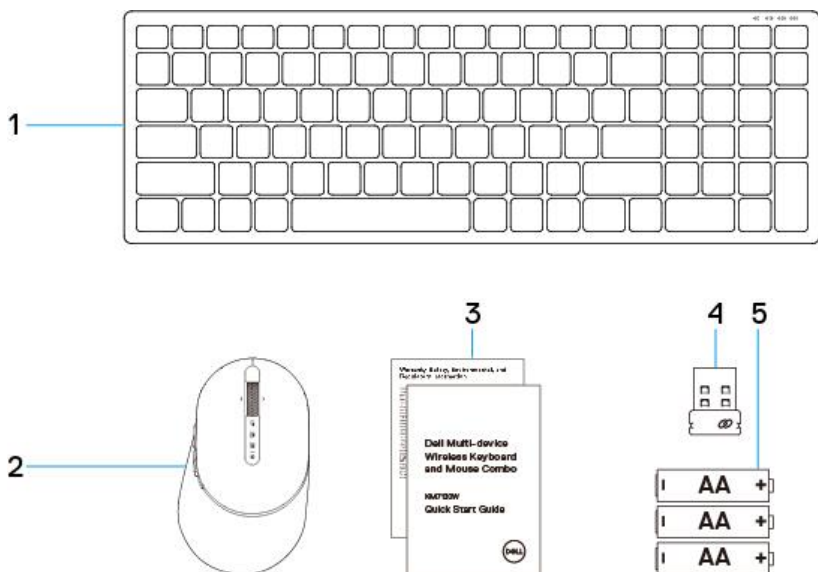
 Limited warranty and return policies 34

 For U.S. customers:..... 34

 For European, Middle Eastern and African customers: 34

 For non-U.S. customers: 34

What's in the box



1 Wireless keyboard

2 Wireless mouse

3 Documents

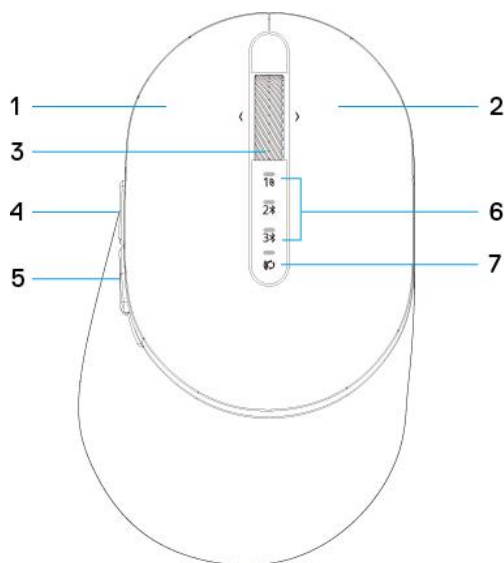
4 USB receiver

5 AA-type Batteries

Features

Mouse

Top view



1 left button

3 scroll/middle button

5 rear side button

2 right button

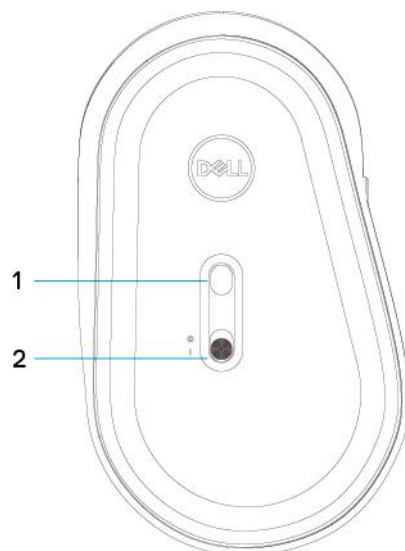
4 front side button

6 LED indicator:

- Dell universal dongle connect
- bluetooth connect device 1
- bluetooth connect device 2
- Low battery indicator

7 Pairing mode switch

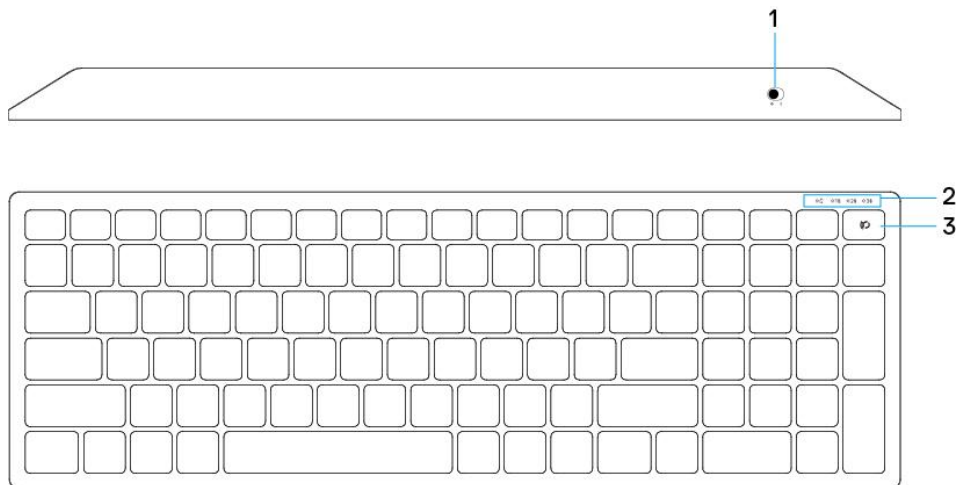
Bottom view



- 1 optical sensor
- 2 power on/off switch

Keyboard

Top view

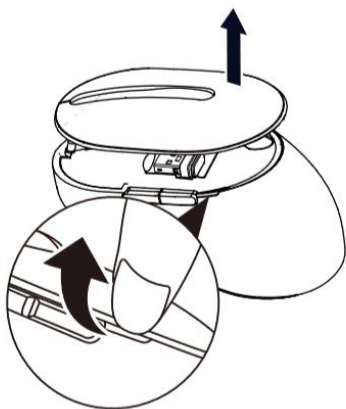


- 1 Power on/off switch
- 2 LED indicators:
 - Dell universal dongle connect
 - bluetooth connect device 1
 - bluetooth connect device 2
 - Low battery indicator
- 3 Connection-mode switch button

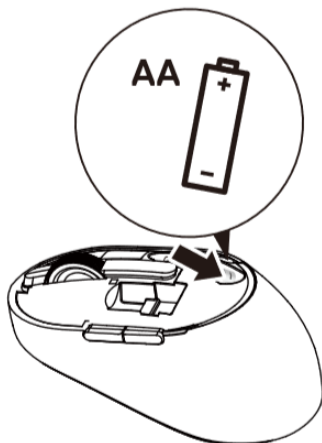
Setting up your wireless mouse

Installing batteries

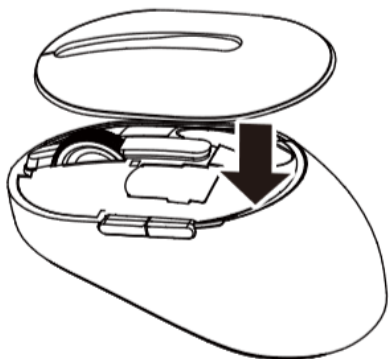
1. Remove the mouse cover.



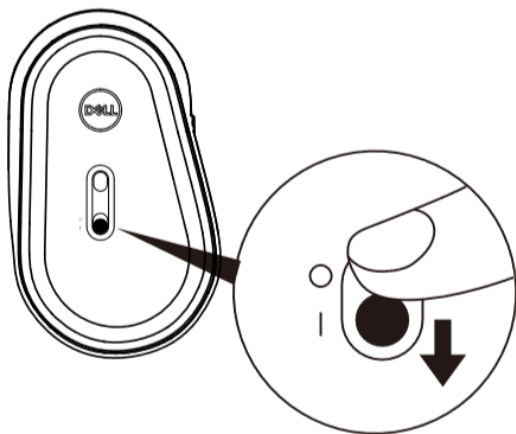
2. Install the AAA batteries into the battery compartment.



3. Replace the mouse cover.



4. Slide the power switch to power on.



NOTE: Make sure the distance between your computer and mouse is within 10 meters.

Pairing your wireless mouse

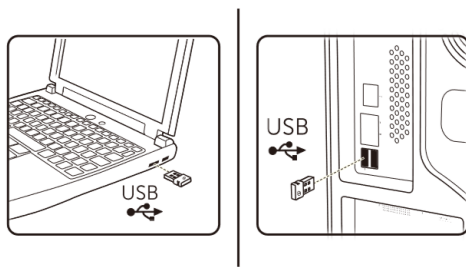
Your Dell wireless mouse can be paired with devices using USB and Bluetooth. You can pair and switch between a laptop, desktop, and a compatible mobile device.

Pairing with a USB device

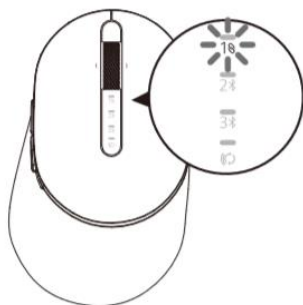


You could connect a device to your wireless mouse using the Dell Universal pairing.

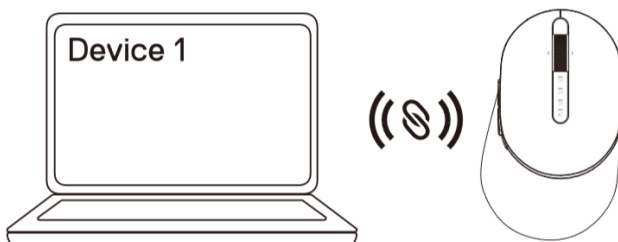
- 1 Install the Dell Universal USB receiver to the USB port on your computer.



- 2 The connection-mode light on the mouse turns on to indicate the Dell Universal pairing, then turns off.



- 3 The mouse is paired with your USB device.



Pairing with a Bluetooth device

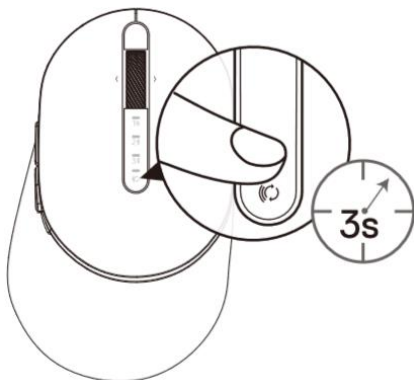
You could connect up to two devices to your wireless mouse using Bluetooth.

Pairing device two using Bluetooth



You could connect a second device to your wireless mouse using Bluetooth.

- 1 Press the connection-mode button on your mouse for 3 seconds until the connection-mode light indicates that the second-Bluetooth connection is selected.



- 2 The second-Bluetooth connection light starts blinking to confirm the pairing mode is enabled.

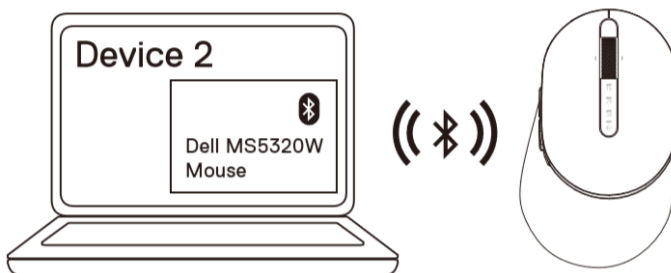


- 3 In Windows Search, type Bluetooth.
- 4 From the list that appears, click Bluetooth Settings.
- 5 Ensure that Bluetooth is enabled.
- 6 From the list of devices, click Dell Mouse MS5320Wc → Pair.



NOTE: If Dell Mouse MS5320Wc is not listed, ensure pairing mode is enabled on the mouse.

- 7 Confirm the pairing process on both mouse and device.
The second-Bluetooth connection light turns solid white for 3 seconds to confirm the connection is established then dims off. After the mouse and a device are paired, they connect automatically when Bluetooth is enabled and they are within the Bluetooth range.

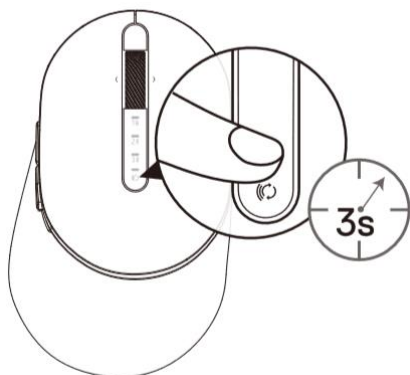


Pairing device three using Bluetooth

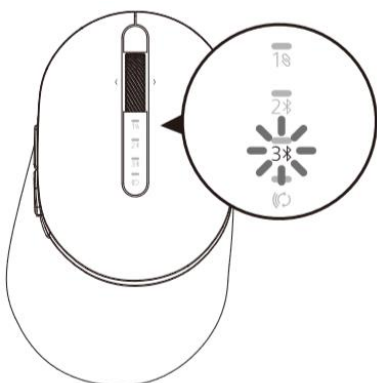


You could connect a third device to your wireless mouse using Bluetooth.

- 1 Press the connection-mode button on your mouse for 3 seconds until the connection-mode light indicates that the second-Bluetooth connection is selected.



- 2 The second-Bluetooth connection light starts blinking to confirm the pairing mode is enabled.

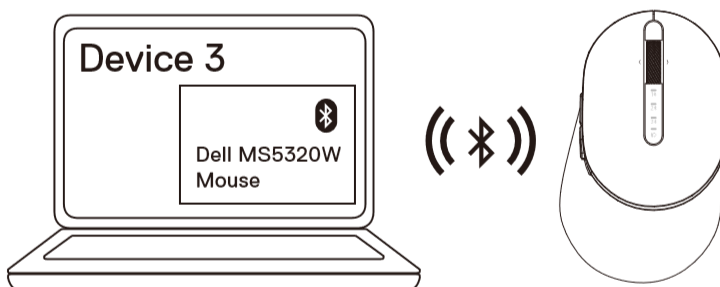


- 3 In Windows Search, type Bluetooth.
- 4 From the list that appears, click Bluetooth Settings.
- 5 Ensure that Bluetooth is enabled.
- 6 From the list of devices, click Dell Mouse MS5320Wc → Pair.



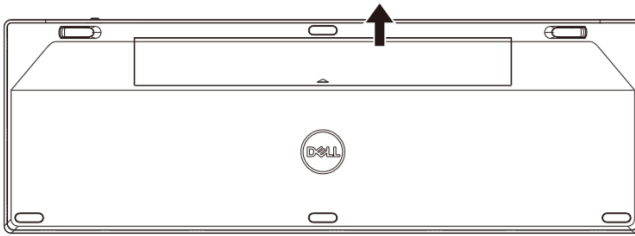
NOTE: If Dell Mouse MS5320Wc is not listed, ensure pairing mode is enabled on the mouse.

- 7 Confirm the pairing process on both mouse and device.
The third-Bluetooth connection light turns solid white for 3 seconds to confirm the connection is established then dims off. After the mouse and a device are paired, they connect automatically when Bluetooth is enabled and they are within the Bluetooth range.

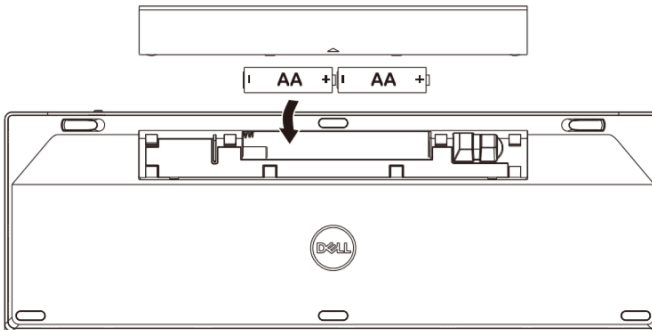


Setting up your wireless keyboard

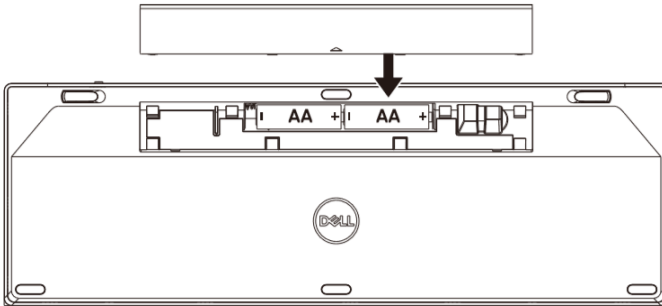
- 1 Remove the battery cover.



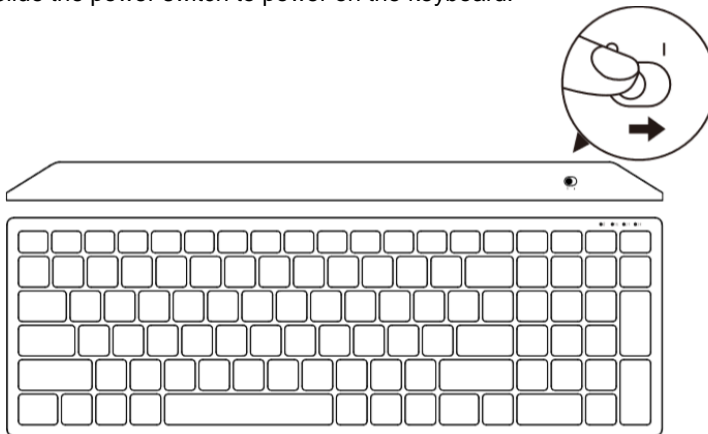
- 2 Install the AA batteries into the battery compartment.



- 3 Replace the battery cover.



- 4 Slide the power switch to power on the keyboard.



NOTE: Make sure the distance between your computer and keyboard is within 10 meters.

Pairing your wireless keyboard

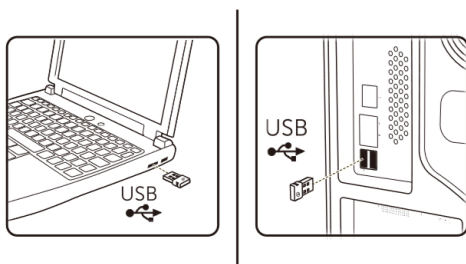
Your Dell wireless keyboard can be paired with devices using USB and Bluetooth. You can pair and switch between a laptop, desktop, and a compatible mobile device.

Pairing with a USB device

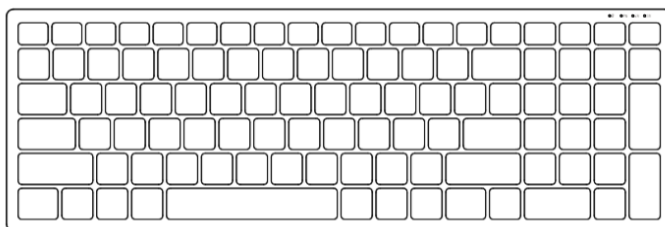


You could connect a device to your wireless keyboard using the Dell Universal pairing.

- 1 Install the Dell Universal USB receiver to the USB port on your computer.



- 2 The connection-mode switch on the keyboard is set to Dell Universal Pairing by default.



- 3 The keyboard is paired with your USB device.



Pairing with a Bluetooth device

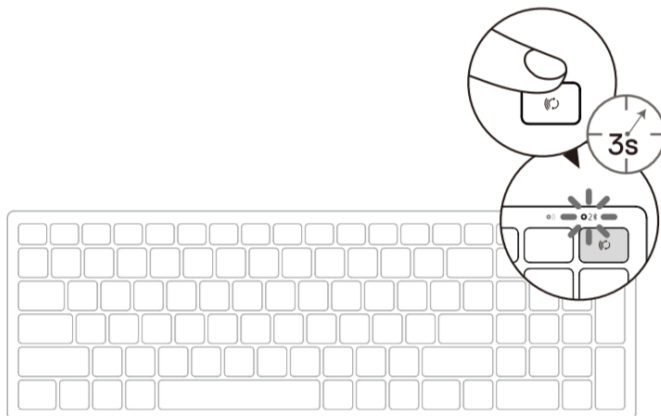
You could connect up to two devices to your wireless keyboard using Bluetooth.

Pairing device two using Bluetooth



You could connect a second device to your wireless keyboard using Bluetooth.

- 1 Press the connection-mode button on your mouse for 3 seconds until the connection-mode light indicates that the second-Bluetooth connection is selected.



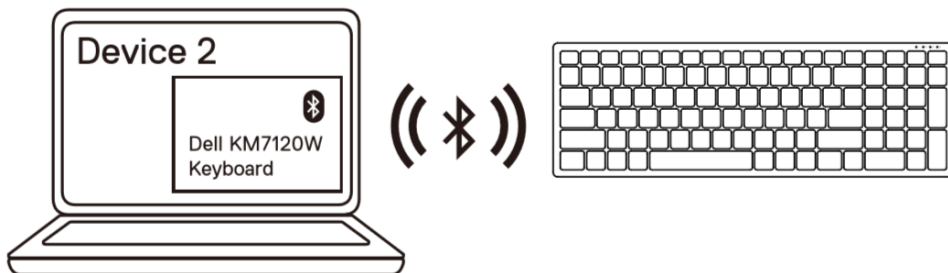
- 2 In Windows Search, type Bluetooth.
- 3 From the list that appears, click Bluetooth Settings.
- 4 Ensure that Bluetooth is enabled.
- 5 From the list of devices, click Dell Keyboard KB7120Wc → Pair.



NOTE: If Dell Keyboard KB7120Wc is not listed, press the Bluetooth-pairing button on the keyboard to ensure pairing mode is enabled.

- 6 Confirm the pairing process on both keyboard and device.

The second-Bluetooth connection light turns solid white for 3 seconds to confirm the connection is established then dims off. After the keyboard and a device are paired, they connect automatically when Bluetooth is enabled and they are within the Bluetooth range.

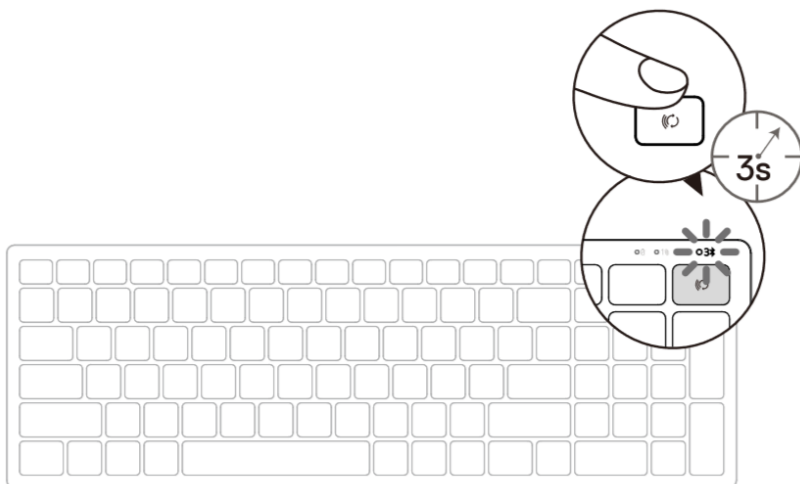


Pairing device three using Bluetooth



You could connect a third device to your wireless keyboard using Bluetooth.

- 1 Press the connection-mode button on your mouse for 3 seconds until the connection-mode light indicates that the third-Bluetooth connection is selected.

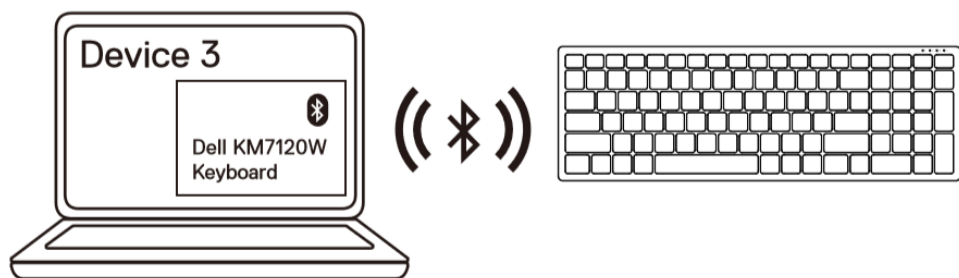


- 2 In Windows Search, type Bluetooth.
- 3 From the list that appears, click Bluetooth Settings.
- 4 Ensure that Bluetooth is enabled.
- 5 From the list of devices, click Dell Keyboard KB7120Wc → Pair.



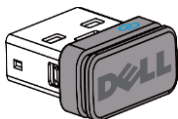
NOTE: If Dell Keyboard KB7120Wc is not listed, press the Bluetooth-pairing button on the keyboard to ensure pairing mode is enabled.

- 6 Confirm the pairing process on both keyboard and device.
The second-Bluetooth connection light turns solid white for 3 seconds to confirm the connection is established then dims off. After the keyboard and a device are paired, they connect automatically when Bluetooth is enabled and they are within the Bluetooth range.



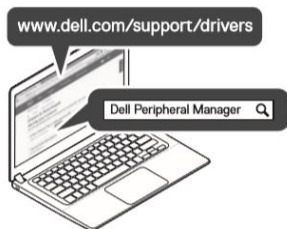
Dell Universal Receiver feature for Windows

You can use the Dell Universal Receiver to manage the devices paired with your Dell wireless mouse and keyboard. The Dell Universal Receiver allows up to six Dell Universal compatible wireless devices to be added to the receiver.



Dell Peripheral Manager

To begin using your receiver, ensure your computer has the software installed. Dell Peripheral Manager may be pre-installed on your computer. The software can also be downloaded from www.dell.com/support/drivers



Troubleshooting

Common Symptoms

The following table contains information about common issues you might encounter and the possible solutions.

Problems	Possible causes	Possible solutions
Unable to use the mouse/keyboard	The white LED Indicator on top of the mouse does not light up when the mouse is powered on	<ol style="list-style-type: none">1 Check if the battery is inserted correctly.<ul style="list-style-type: none">• Battery “+” and “-” ends should follow those indicated on the battery compartment label.2 Check the battery level.<ul style="list-style-type: none">• If the mouse uses a rechargeable battery, make sure the battery is fully charged.• If the battery is exhausted, replace it with a new one.3 Turn the mouse/keyboard off then on.<ul style="list-style-type: none">• Check if the battery status light is flashing amber, indicating the battery power is low. If the battery is fully depleted, the battery status light will not turn on.4 Make sure the USB dongle is directly connected to your computer.<ul style="list-style-type: none">• Avoid using the port replicators, USB hubs, etc.

Unable to pair the mouse/keyboard to the computer using Bluetooth

The Bluetooth icon on the computer doesn't light up when connecting the mouse to the computer.

- 5 Change the USB port.
 - Insert the USB dongle into another USB port on your computer.
- 1 Check the battery level.
 - If the mouse/keyboard uses a rechargeable battery, make sure the battery is fully charged.
 - If the battery is exhausted, replace it with a new one.
- 2 Turn the mouse/keyboard off then on.
 - Check if the battery status light is flashing amber, indicating the battery power is low. If the battery is fully depleted, the battery status light will not turn on.
- 3 Restart your computer.
- 4 Check the operating system is Microsoft Windows 10/Microsoft Windows 8/Chrome/Android.
- 5 Make sure the mouse/keyboard is set to Bluetooth Low Energy (BLE) mode in your computer. For instructions, refer to the documentation that came with your computer.
- 6 Turn off then on the Bluetooth Low Energy (BLE) mode in your computer. For instructions, refer to the documentation that came with your

computer.

Mouse pointer does not move

The mouse pointer freezes

Left/right buttons doesn't work

No response when the left or right mouse button is pressed

Wireless connection is lost

Previously paired mouse no longer works on the computer

Unable to pair the mouse/keyboard with the computer

Wireless pairing error message is received while pairing the mouse/keyboard with the computer

- 1 Check the battery level.
 - If the mouse uses a rechargeable battery, make sure the battery is fully charged.
 - If the battery is exhausted, replace it with a new one.
 - 2 Turn the mouse off then on.
 - Check if the battery status light is flashing amber 10 times, indicating the battery power is low. If the battery is fully depleted, the battery status light will not turn on.
 - 3 Restart your computer.
-
- 1 Check the battery level.
 - If the mouse/keyboard uses a rechargeable battery, make sure the battery is fully charged.
 - If the battery is exhausted, replace it with a new one.
 - 2 Turn the mouse/keyboard off then on.
 - Check if the battery status light is flashing amber 10 times, indicating the battery power is low. If the battery is fully depleted, the battery status light will not turn on.
 - 3 Restart your computer.

- 4 Make sure the USB dongle is connected directly to your computer.
 - Avoid using the port replicators, USB hubs, etc.
- 5 Change the USB port.
 - Insert the USB dongle into another USB port on your computer.

Specifications

General

Keyboard Model number	KB7120Wc
Connection type technology	2.4 GH Wireless & Bluetooth dual mode
System requirement (2.4GH)	Microsoft Windows 10/ Microsoft Windows 8/ Microsoft Windows 7/ Microsoft Windows XP/ Microsoft Windows Vista/ Server 2003/ Server 2008/ Server 2012/ Linux 6.x/ Ubuntu, Neokylin, Free DOS, Chrome and Android MAC OS
System requirement (Bluetooth)	Microsoft Windows 10/ Microsoft Windows 8/ Microsoft Windows 7/ Chrome and Android

Electrical

Operating voltage	2.2 V – 3.0 V
Battery required	Two AA alkaline

Physical Characteristics

Weight (without battery)	500.9g
Dimensions:	
Length	122mm
Width	363.4.03mm
Height	35.52mm

Environmental

Temperature

Operating

0°C to 40°C

Storage

-40°C to 65°C

Storage Humidity

95% maximum relative humidity;
non-condensing

2.4 GHz/BLE wireless

Radio transmission

Bi-directional communication
(Transceiver)

Range

Up to 10 m

General

Mouse Model number

MS5320Wc

Connection type technology

2.4 GH Wireless & Bluetooth dual mode

System requirement (2.4GH)

Microsoft Windows 10/
Microsoft Windows 8/
Microsoft Windows 7/
Microsoft Windows XP/
Microsoft Windows
Server 2008/
Server 2012/
Linux 6.x/
Ubuntu,
Neokylin,
Free DOS,
Chrome and Android
MAC OS

System requirement (Bluetooth)

Microsoft Windows 10/
Microsoft Windows 8/
Microsoft Windows 7/
Chrome and Android

Electrical

Operating voltage	0.9 V - 1.6 V
Battery required	One AA alkaline

Physical Characteristics

Weight (without battery)	84g
Dimensions:	
Length	114.5 ± 0.5 mm
Width	69.7 ± 0.3 mm
Height	41.6 ± 0.3 mm

Environmental

Temperature	
Operating	0° C to 40°C
Storage	-40°C to 65°C
Storage Humidity	95% maximum relative humidity; non-condensing

2.4 GHz/BLE wireless

Radio transmission	Bi-directional communication (Transceiver)
Range	Up to 10 m

Statutory information

Warranty

Limited warranty and return policies

Dell-branded products carry a 1-year limited hardware warranty. If purchased together with a Dell system, it will follow the system warranty.

For U.S. customers:

This purchase and your use of this product are subject to Dell's end user agreement, which you can find at Dell.com/terms. This document contains a binding arbitration clause.

For European, Middle Eastern and African customers:

Dell-branded products that are sold and used are subject to applicable national consumer legal rights, the terms of any retailer sale agreement that you have entered into (which will apply between you and the retailer) and Dell's end user contract terms. Dell may also provide an additional hardware warranty—full details of the Dell end user contract and warranty terms can be found by going to Dell.com, selecting your country from the list at the bottom of the “home” page and then clicking the “terms and conditions” link for the end user terms or the “support” link for the warranty terms.

For non-U.S. customers:

Dell-branded products that are sold and used are subject to applicable national consumer legal rights, the terms of any retailer sale agreement that you have entered into (which will apply between you and the retailer) and Dell's warranty terms. Dell may also provide an additional hardware warranty —full details of Dell's warranty terms can be found by going to Dell.com, selecting your country from the list at the bottom of the “home” page and then clicking the “terms and conditions” link or the “support” link for the warranty terms.