



OPERATION INSTRUCTION

1. Pairing:

Within 30 seconds after power on, press and hold Button  &  at the same time for 5 seconds. LED indicator will flash . When the pairing is done, it is shown that fan in LOW and light is OFF.

2. Fan 3 speeds :

Tap key ①/②/③ (See Fig.1) to control fan high/medium/low speed.

3. Fan on/off :

Tap Fan on/off key(See Fig.1-④) to control fan on/off.

4. Light on/off:

Tap light key (See Fig.1-⑤) to control light on/off .

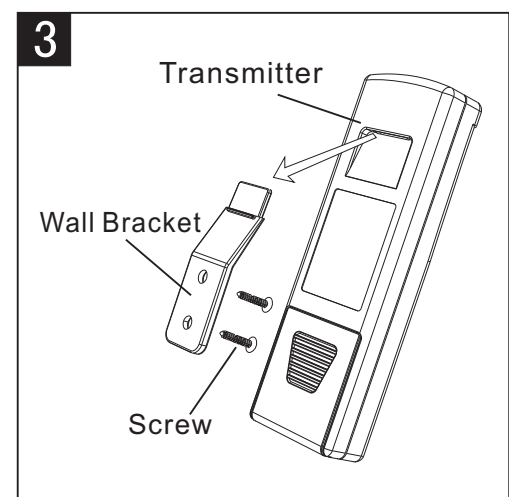
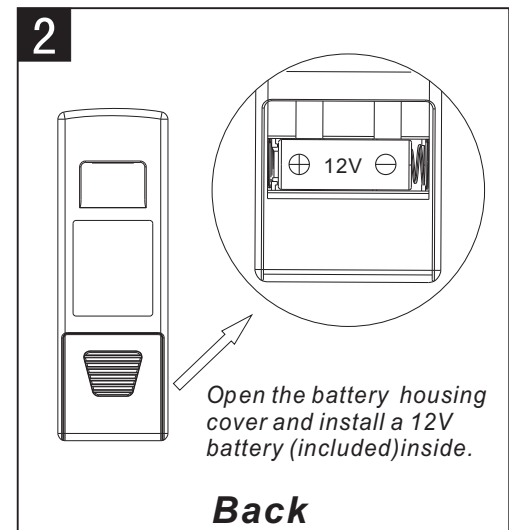
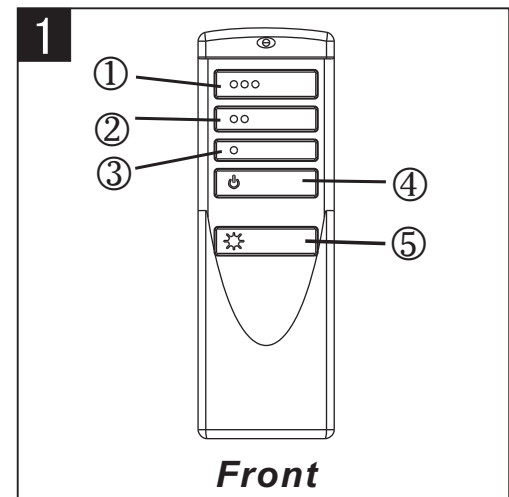
5. Light Delay Off Feature:

Press and hold fan off key(See Fig.1-④) for 5 seconds to enter Light Delay Off mode. The light will be shut off after 1 min.

To exit the Light Delay Off Mode, just tap the light key.

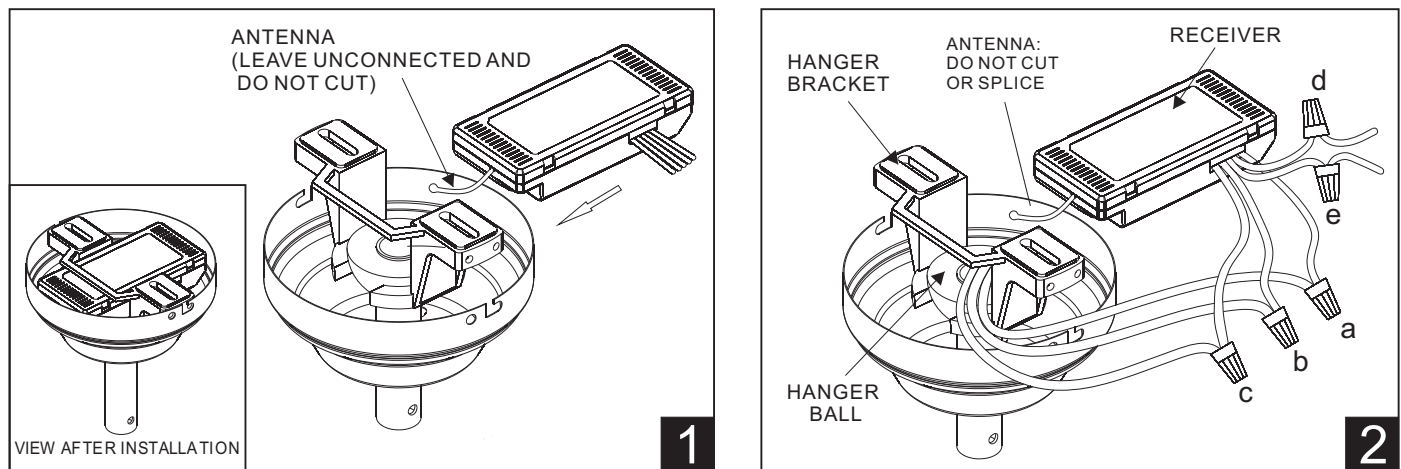
6. Power Off Memory :

When power is off and back again, resume the status of both light and fan before switch off.



Install the transmitter wall bracket in wall by two screws and hang transmitter in it carefully. (See fig.3)

INSTALL AND MAKE WIRE CONNECTION



- 1.) Make sure the electric power was turned off and then install the system.
- 2.) Ceiling fan must be set at HIGH speed and light kit (if any) at ON position by pulling the "Pull Switch" after installation. Once the connection has been made, the receiver inserts into the drop rod hanging bracket. The canopy comes up to cover the receiver and bracket. (See Fig.1)
- 3.) Make Wire Connection. (See Fig.2)
 - a. The Motor **white** wire to the **white** "TO COM" wire from Receiver with a wire nut.
 - b. The Motor **black** wire to the **black** "TO MOTOR L" wire from Receiver with a wire nut.
 - c. The Motor **blue** wire to the **blue** "TO LIGHT" wire from Receiver with a wire nut.
 - d. The **white** wire from Outlet Box to the **white** "AC IN N" wire from Receiver with a wire nut.
 - e. The **black** wire from Outlet Box to the **red** "AC IN L" wire from Receiver with a wire nut.
 - The ground wire from Outlet Box to the green ground wire from the Hanger Ball and the green ground wire from the Hanger Bracket with a wire nut.

Make sure all of wire nuts are connected firmly. Tuck all wire nuts and wires carefully up into the Outlet Box, EXCEPT antenna, which should remain outside Outlet Box.

This device complies with part 15 of the FCC Rules. Operation is subject to the following two conditions:

- (1) this device may not cause harmful interference, and
- (2) this device must accept any interference received, including interference that may cause undesired operation.

NOTE:

Changes or Modifications not expressly approved by the party responsible could void the user's authority to operate this device.

This equipment has been tested and found to comply with the limits for a Class B digital device, pursuant to Part 15 of the FCC Rules. These limits are designed to provide reasonable protection against harmful interference in a residential installation. This equipment generates, uses and can radiate radio frequency energy and, if not installed and used in accordance with the instructions, may cause harmful interference to radio communications. However, there is no guarantee that interference will not occur in a particular installation.

If this equipment does cause harmful interference to radio or television reception, which can be determined by turning the equipment off and on, the user is encouraged to try to correct the interference by one or more of the following measures:

- Reorient or relocate the receiving antenna.
- Increase the separation between the equipment and receiver.
- Connect the equipment into an outlet on a circuit different from that to which the receiver is connected.
- Consult the dealer or an experienced radio/TV technician for help.