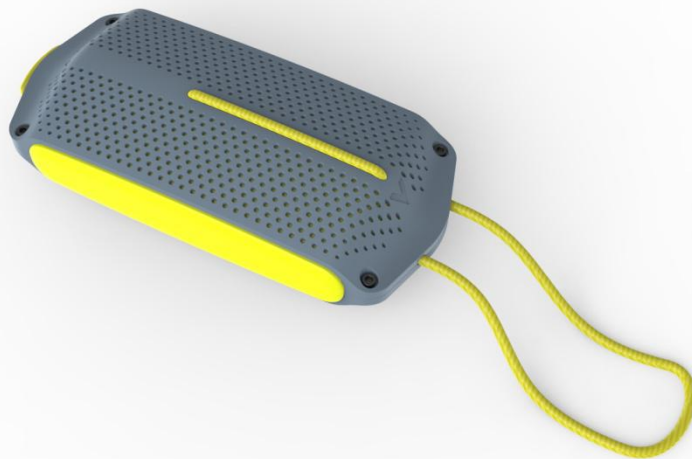


# **User Manual**

## **Wireless Bluetooth Speaker**

Thank you for purchasing this wireless speaker

For best use of this device we recommend carefully reading this user manual and keeping it for your records.



### **Package includes:**

- Bluetooth speaker
- USB to Micro USB cable
- 3.5mm Auxiliary cable
- User Manual

### **Safety instructions:**

- Do not disassemble, throw away or damage this Product. Consult your local waste collection agency for proper disposal or recycling methods.
- This product is not a toy. Use extra caution while children are using this product.
- Keep the Wireless Speaker away from direct sunlight, fire and high voltage equipment. Do not store the Wireless Speaker inside a car during hot weather.

Remember, a closed car acts as a greenhouse allowing the inside temperature to possibly reach over 200 degrees.

- Device may become warm while charging.
- Be assured to turn product completely off when plugging and unplugging into outlet.
- Damage, shock, and/or injury can occur if this warning is not heeded properly.

## Charging:





- Connect the small end of the micro USB charging cable (included) to the Micro USB port located on the top of the speaker. Connect the larger end of the cable to your computer's USB port or an wall charger(not included).
- The LED indicator will turn red while charging.
- Once fully charged, the red LED will turn off and speaker is ready for use.
- Charging could take up about 3 hours.
- The fully charged battery has power for up to 3 hours of talk-time or up to 60 hours of standby time.

## Pairing:

When you turn on the device, the voice prompt will say "the Bluetooth device is ready to pair". Activate the Bluetooth feature on the phone, and set the phone to search for wireless devices. (The speaker will show on your device as )

- The voice prompt will confirm that pairing was successful.

## Functionality:

- TURN ON/OFF BUTTON 
  1. Press and hold for turn on
  2. Press and hold again for turn off
- PLAY/PAUSE BUTTON 
  1. Click once to pause or play music.
- PREVIOUS SONG/LOWER VOLUME BUTTON 
  1. Short Press for volume down.
  2. Press and hold for previous song
- NEXT SONG/HIGHER VOLUME BUTTON 

1. Press once for volume up.
2. Press and hold for next song

For Auxiliary input plug in the included 3.5mm cable to 3.5mm audio cable to the AUX input in the top of the speaker and the other end of the 3.5mm cable into you music device. A voice prompt will signal that the connection is successful.

**FCC STATEMENT :**

This device complies with Part 15 of the FCC Rules. Operation is subject to the following two conditions:

- (1) This device may not cause harmful interference, and
- (2) This device must accept any interference received, including interference that may cause undesired operation.

**Warning:** Changes or modifications not expressly approved by the party responsible for compliance could void the user's authority to operate the equipment.

NOTE: This equipment has been tested and found to comply with the limits for a Class B digital device, pursuant to Part 15 of the FCC Rules. These limits are designed to provide reasonable protection against harmful interference in a residential installation. This equipment generates uses and can radiate radio frequency energy and, if not installed and used in accordance with the instructions, may cause harmful interference to radio communications. However, there is no guarantee that interference will not occur in a particular installation. If this equipment does cause harmful interference to radio or television reception, which can be determined by turning the equipment off and on, the user is encouraged to try to correct the interference by one or more of the following measures:

- Reorient or relocate the receiving antenna.
- Increase the separation between the equipment and receiver.
- Connect the equipment into an outlet on a circuit different from that to which the receiver is connected.
- Consult the dealer or an experienced radio/TV technician for help.

**RF warning statement:**

The device has been evaluated to meet general RF exposure requirement. The device can be used in portable exposure condition without restriction.