

Great Wall

LCD MONITOR USER'S MANUAL

Read this manual before operation

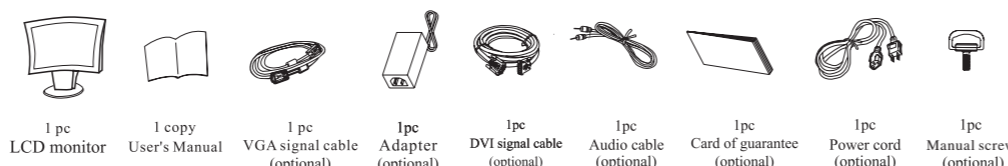


Unique feature introduction

- The LCD can provide you bright, clear and vivid color display quality, not emitting radiation ray as generating by the common CRT display.
- Auto setting
- Meeting the energy saving function of VESA DPMS: Available to turn off automatically the power of the display after reaching the energy saving time as defined by the user.
- Numeric character smoothing function.
- Meeting Windows 9X/ME/2000/XP/Vista plug&play specifications.

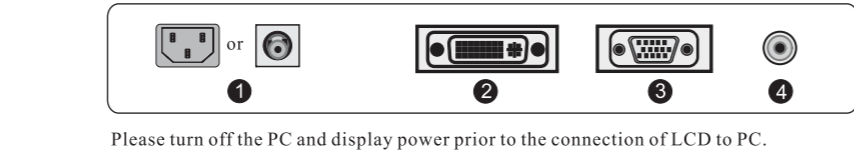
Inside the box

Please firstly prepare a stable, balanced, clean desktop near to the wall power socket for your LCD and computer before you unpack the LCD package.



NOTES: All the illustrations inside the manual and the product accessories provided are for reference only. For detail, please refer to the practical product. The company reserves the right to update the products and no prior notice will be given.

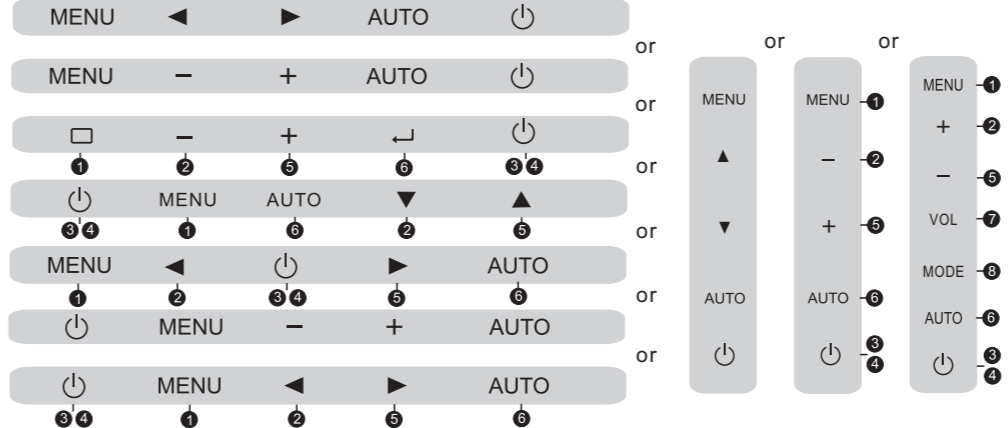
Connection of display to PC



- Power plug**
Connect the power cord of the LCD to the POWER port on the back of the LCD.
- DVI interface (need display support)**
Connect the DVI cable to the DVI In port on the back of the LCD.
- VGA interface (need display support)**
Connect the signal cable to the 15-pin D-SUB port on the back of the LCD.
- Audio interface (need display support)**
Connect the audio cable of the LCD to the audio port on the back of the PC.

Operation of display

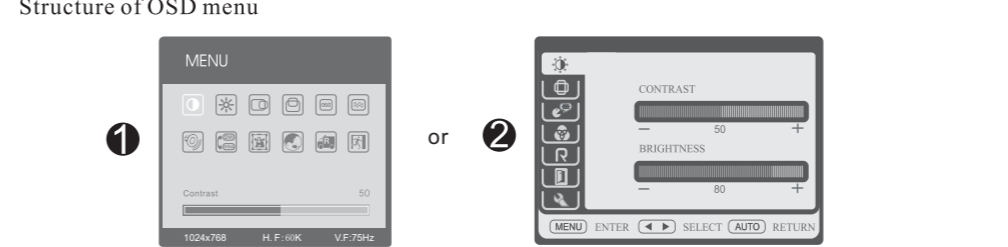
"MENU" and "AUTO" keys and a LCD lamp can be found in the display panel. The specific functions of these symbols and press keys are listed in the following table.



Button	Function
MENU key	Display OSD menu or enter sub-menu
Direction key	Indicator moves or the decrement of the OSD manual selection project or the highlight mode of the shortcut key or the adjustment of the contrast and brightness.
Power key	Quit OSD screen power
LED Power mode indicator	Green or blue or white-normal action Orange (yellow) or red or flash-Power Management (that is, DPMS mode: reduce the power consumption to 2W when horizontal or vertical synchronous signal is not received.)
Direction key	Indicator moves or the increment of the OSD manual selection project or the adjustment of the contrast and brightness or the adjustment of highlight menu of the shortcut key.
AUTO Adjustment	Automatically adjust pixel clock, phase, horizontal and vertical position and others or quit from the menu or exit the present menu.
VOL key	Displaying volume control bar
MODE key	Displaying brightness window display mode

How to use on screen display(OSD)

It is available for you to use OSD function with ease to adjust the display contents for the quality you want. (Remarks: Please ensure that the display is at the power on status and the sync signal input is provided prior to use the OSD adjustment function)



- Press "MENU" Push key to display the OSD menu.
- Press "←" or "→" Push key to select the main menu entry.
- Press "MENU" Push key to select sub entry.
- Press "←" or "→" Push key to adjust.
- Press "AUTO" Push key to exit from the present menu after ending the adjustment.

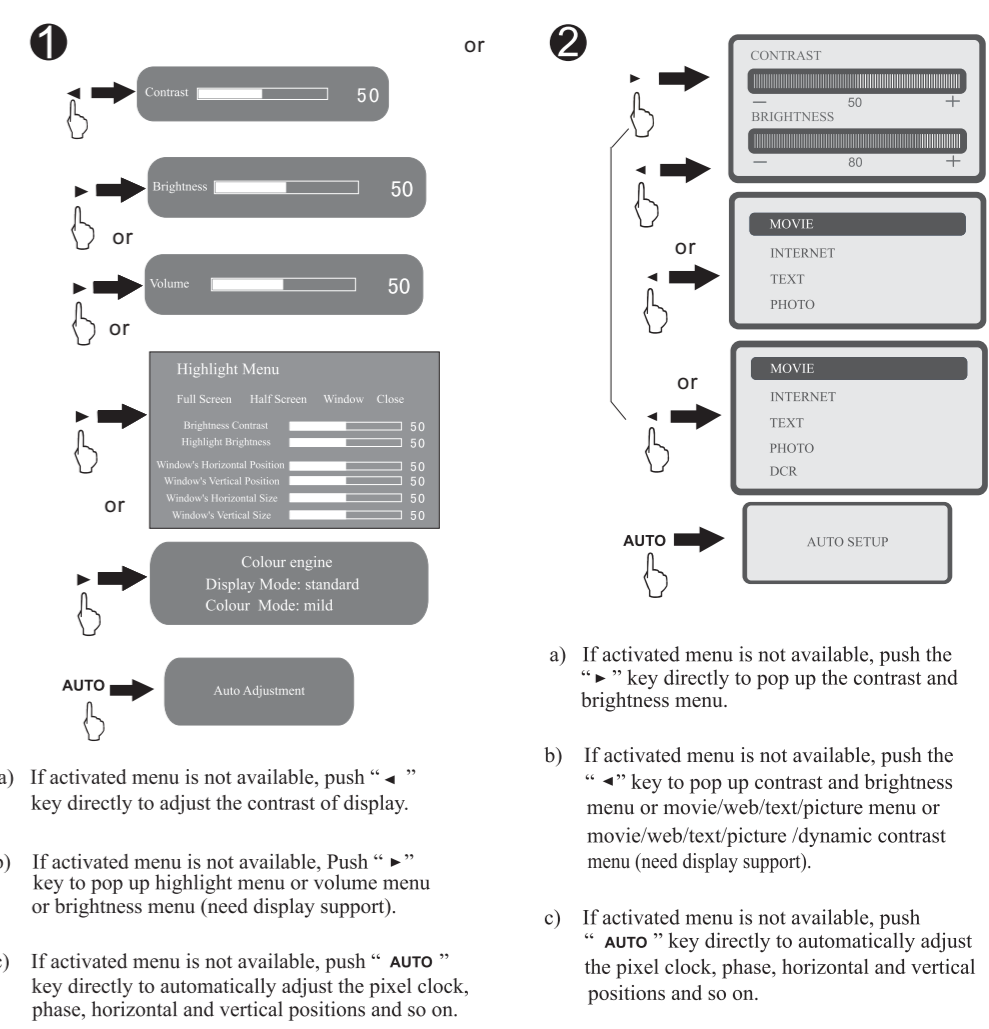
Auto adjustment

- Press the key with [AUTO] on the display panel.
- Begin to auto adjust. [Auto adjust] OSD will be displayed automatically. It will complete the adjustment about 10 seconds later.

Remarks: No effect will be available for the function adjustment under DVI mode since the digital signal is very standard.

OSD Shortcut Key

OSD Shortcut Key (Remarks: The menu function may differ slightly depending on the model.)
This function can facilitate users to adjust the commonly used menu such as "brightness" and "contrast".



- If activated menu is not available, push the "←" key directly to pop up the contrast and brightness menu.
- If activated menu is not available, push the "→" key to pop up contrast and brightness menu or movie/web/text/picture menu or dynamic contrast menu (need display support).
- If activated menu is not available, push "AUTO" key directly to automatically adjust the pixel clock, phase, horizontal and vertical positions and so on.

Menu

Sub-menu	Function name	After press "←" and "→" button
Contrast	Adjust the contrast of the picture.	
Brightness	Adjust the brightness of the picture.	
Colour Engine	Switch colour engine mode(optional)	
Horizontal position	Screen picture can move left or right.	
Vertical position	Screen picture can move up or down.	
OSD horizontal position	Adjust the horizontal orientation of the menu.	
OSD vertical position	Adjust the vertical orientation of the menu.	
Phase	Adjust the noise at the vertical direction of the picture.	
Horizontal size	Adjust the noise at the horizontal direction of the picture.	
Volume	Adjust the volume (need display support).	
Input selection	A/D or D/A conversion (need display support).	
Color adjustment	Preset temperature in the factory (9300K) (7500K) (6500K) USER: User-defined color temperature AUTO: Automatic color adjustment.	
Language	Six languages: Simplified Chinese, English, French, German, Italian, Spanish.	
Recover the mode in the factory	Recover to the default value in the factory.	
Screen size adjustment	Switching function between widescreen display and common display.	
Quit	Quit from the OSD menu.	

Function Name	Sub-function
Full Screen Highlight	Highlight contrast
Half Screen Highlight	Highlight brightness
Window Highlight	Highlight contrast Highlight brightness Window's Horizontal Position Window's Vertical Position Window's Horizontal Size Window's Vertical Size
Close	

Notes: Menu function is a little different in different type; the function name will be varied slightly depending on the model.

Sub-menu	Function name	After press "←" and "→" button
Contrast	Contrast	Adjust the contrast of the picture.
	Brightness	Adjust the brightness of the picture.
Horizontal position	Horizontal position	Screen picture can move left or right.
	Vertical position	Screen picture can move up or down.
Language	Language	English, Simplified Chinese, Korean, Turkish, French, German, Italian, Spanish, Russian, and Japanese.
	Color adjustment	Warm color temperature, cold temperature USER: User-defined color temperature AUTO: Automatic color adjustment.
AUTO	AUTO	Automatically detects the resolution switching function between wide screen display and common display (only by wide screen) to recover the default settings in the factory.
	Quit	Quit from the OSD menu.
Color engine	Color engine	Full screen/half screen/ window/close (need display support) highlight contrast/ highlight brightness/ width/height/horizontal/vertical.
	OSD position	Horizontal and vertical adjustment.
Phase clock	Phase clock	Adjustment of phase and frequency.
	Information	Resolution information.
Output conversion	Output conversion	VGA/DVI conversion (need display support).
	Volume	Volume adjustment (need display support).
LED brightness	LED brightness	Adjust the brightness of the Power LED (need display support).

Notes: Some menu functions will be forbidden to use depending on different types with normal operation.

Optimal Screen Resolution Setting

Inch	The optimal resolution	Frame Rate
4:3 Mode		
15	1024x768	60Hz
17	1280x1024	60Hz
19	1280x1024	60Hz
Wide Mode		
15	1360x768	60Hz
17	1280x720	60Hz
18.5	1360x768	60Hz
19	1440x900 or 1680x1050	60Hz
20	1600x900	60Hz
20.1	1680x1050	60Hz
21.5	1680x1050 or 1920x1080	60Hz
21.6	1680x1050 or 1920x1080	60Hz
22	1680x1050	60Hz
23	1920x1080	60Hz
23.6	1920x1080	60Hz
24	1920x1200	60Hz

Remarks: The resolution will be varied slightly depending on the model.

Safety Precautions

Please read the following instructions to avoid a fire or electric shock leading to injury or damage of property.

- Caution:**
 - Always operate the LCD with the designated power supply. To guarantee the protection, we strongly recommend that you should apply a surge-current protection device between the mains socket and AC power supply or AC adapter.
 - Remove the power plug in case of any abnormality (e.g. noise, smoke or smell).
 - Always keep the LCD away from moisture.
 - Never operate the LCD in case of lightning or storm.
 - Always keep the LCD well ventilated. Never block the ventilation grooves or vents. Keep the LCD at least 4m (10 cm) away from the wall.
 - Do not disconnect the power cord while using the monitor.
 - Do not excessively bend the plug and wire nor place heavy objects upon them, which could cause damage.
 - Please disconnect the power if the display is not used for a long period so as to prevent damage resulted from electric shocks and abnormal power supply voltage.
 - Be sure to contact an authorized Service Center, when installing your monitor in a location with heavy dust, high or low temperatures, high humidity, and exposed to chemical substances and where it operates for 24 hours such as airports, train stations etc. Failure to do so may cause serious damage to your monitor.
 - Do not insert metal objects such as chopsticks, wire and gimlet or inflammable objects such as paper and match into the vent, headphone port or AV ports or etc.
 - Keep the plastic packaging (bag) out of children's reach.
- When viewing a fixed screen for an extended period of time, residual image or blurriness may appear.**
 - To handle or clean the LCD, switch off the LCD with the power plug removed.
 - Never touch the plug with a wet hand.

Others

A suggestion of human body engineering
Please do not operate the display in a dark room or under a bright background. To acquire the best visual comfort, you had better set up the display for long hours, it is suggested that you take a rest of 10 minutes per hour because eyeing fatigue will be resulted when you watch the screen continuously. The product expiration spot conforms to the SJ/T 11292-2003 four levels of standards.

Environmental considerations

Operating	Temperature: 50°F ~ 104°F (10°C ~ 40°C) Humidity: 10% ~ 80%, non-condensing
Storage	Temperature: -4°F ~ 113°F (-20°C ~ 45°C) Humidity: 5% ~ 85%, non-condensing

Cleaning and Maintenance of LCD

- Do NOT use any solvent listed below to avoid any damage to the LCD and the casing.
Diluent, spray cleaner, corrosive cleaner, acid or alkaline solvent, volatile oil, and wax, benzene.
- Casing**
- Do NOT always use rubber or plastic product to wipe the casing to avoid any peeling paint of the casing.
 - Wipe the casing using a cloth with a little neutral cleaner, and then dry it using a dry cloth.
- LCD panel**
- The display shall be dusted off periodically with a piece of clean soft cloth to keep clean. Any fluid may damage the display.
 - Never wipe the screen using paper or a hard substance.
 - Make sure to unplug the power cord before cleaning the product.

Trouble shooting

- The following situations are normal, which do not refer to pool quality.
- The graph shown may deviate depending on the PC type when you turn on the LCD for the first time. Please adjust it according to the operation instructions of LCD.
 - The screen may flash when you turn on the LCD for the first time. Switch off it and turn it on again to check for the flashing.
 - The brightness of the screen may vary depending on the graphic applied to the PC desktop.
- In case of abnormal operation of the LCD, perform troubleshooting according to the procedures described in the Table. In case that the fault is not listed in the Table, do not operate the LCD, and contact the dealer or Local service center for further help.

< Table >

Symptoms	Check
a) The power indicator is not bright.	Is the power cord plugged to the socket firmly? Is the power switch turned on?
b) The power indicator is green or blue or white.	Is the AC socket with power? Please insert another equipment to test and see program without image. Please increase [Contrast] or [Brightness].
c) Power indicator is orange(yellow) or red or flash.	Check if the signal resolution of computer is within the specifications of display? Please press the keypad or mouse if the display is under power management mode. Is the computer power turned on?
Display mode is not in the position.	Is the signal cable properly inserted? Check if the signal resolution of computer is within the specifications of display?
Displayed image jittered.	Check if the signal resolution of computer is within the specifications of display? Is the signal cable properly inserted?
Display not synchronous.	Check if the signal resolution of computer is within the specifications of display? Check if the image output extent of computer is within the specifications of display?

Uniformity and related compliance

FCC safety compliance
This device complies with Part 15 of the FCC rules. Operation is subject to the following two conditions:
1) this device may not cause harmful interference, and 2) this device must accept any interference received, including interference that may cause undesired operation.

This equipment has been tested and found to comply with the limits for a Class B digital device, pursuant to Part 15 of the FCC rules. These limits are designed to provide reasonable protection against harmful interference in a residential installation. This equipment generates, uses and can radiate radio frequency energy and if not installed and used in accordance with the instructions, may cause harmful interference to radio communications. However, there is no guarantee that interference will not occur in a particular installation. If this equipment does cause harmful interference to radio or television reception, which can be determined by turning the equipment off and on, the user is encouraged to try correct the interference by one or more of the following measures:

- * Reorient the receiving antenna.
- * Increase the separation between the equipment and receiver.
- * Connect the equipment into an outlet on a circuit different from that to which the receiver is connected.
- * Consult the dealer or an experienced radio/TV technician for help.

Any special accessories needed for compliance must be specified in the instruction manual.
You are cautioned that changes or modifications not expressly approved by the party responsible for compliance could void your authority to operate the equipment.