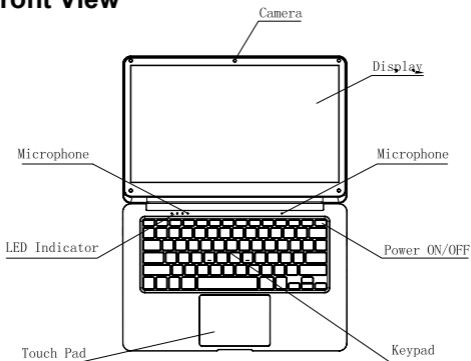


Specifications

Model	W1410A
Processor	Intel® Celeron® Processor N3350, up to 2.4G
Operating System	Windows 10 Home
RAM	4GB DDR3
In-built storage	64 GB
HDD/SSD Option	Slot to connect 2.5"HDD
Micro SD Slot	Support
Screen Size	14.1"
Resolution	1366*768
Screen Type	TN
Touch Pad	Touch Pad with Multi-Touch functionality
Battery	4776127P-5000mAh 7.4V
Adapter	DC 12V,2.0A
Camera	0.3 MP
Speaker	Dual Speakers
Headphone/Mic	Single 3.5mm Combo Jack for Headphone & Mic
Wi-Fi	RTL8723BU
Bluetooth	Bluetooth® Ver.4.0
HDMI	Mini HDMI Type D 1.4a
LAN	Rj45 10/100M LAN port
USB	USB3.0*1+USB2.0*2
Dimensions	351*233*19.2 mm
Weight	1400g

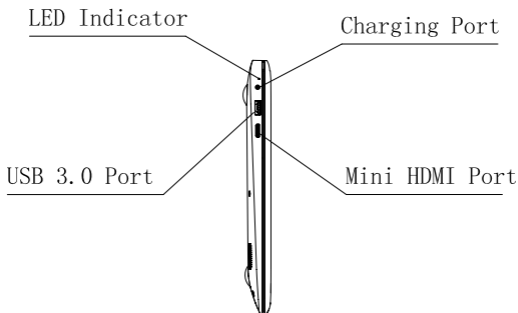
Know Your GBook

• Front View



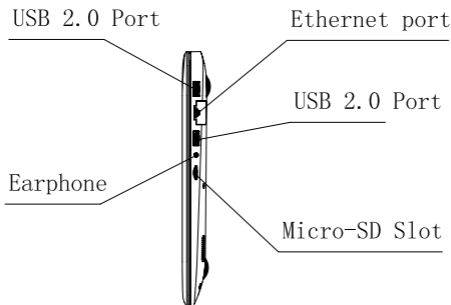
1. Camera: Built-in webcam that allow you to capture video, chat Online, and more.
2. LED Indicators: Power on, Caps Lock and Num Lock indicator
3. Microphone: Built-in microphone that help you for Online Audio / Video calling, and more.
4. Keypad: 78 keys keypad including Internet and MM short keys
5. Touch Pad : Touch Pad with multi touch functionality
6. Display: High quality TN screen allows you to watch movies, Play Games and more
7. Power ON/OFF: Long press to Power ON / OFF.

• Left Side View



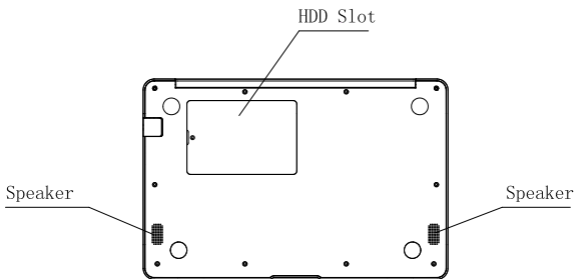
1. LED Indication: Red LED indication for charging.
2. Charging port: 3.5mm power connector to charge your GBook. Use only Adapter that is provided along with the box.
3. USB 3.0 Port: you can connect any devices (like Mouse, Keyboard Extn. HDD/ SSD etc.)
4. Mini HDMI port: it allow you to connect any external display device, LikeProjector, LCD Monitor, etc. (Cable not included)

• Right Side View



1. USB Port: You can connect any devices (like Mouse, Keyboard, Extn. HDD / SSD, etc.)
2. Ethernet port: 10/100 based RJ45 port to connect your device to access the Network
3. Headphone out Jack: Single/Combo jack for Headset & MIC
4. Micro-SD slot: expandable up to 128GB

• Bottom Side View

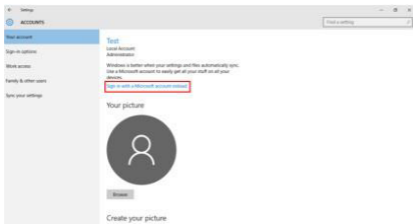


1. **Speaker:** Dual Speakers with high quality sound allow you to listen music, watch video, play games, and more.
2. **Slot to connect HDD:** Expand your storage capacity up to 1TB.

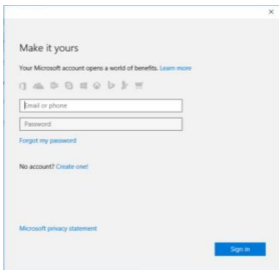
Using Microsoft Account

When you use Microsoft account to login to the device, you get many more options to use like Web apps, Outlook, Cloud storage (OneDrive) etc.

- A) To login to the Microsoft account you need to go to the settings > Accounts In Accounts you will have option as “Sign in with a Microsoft account instead”



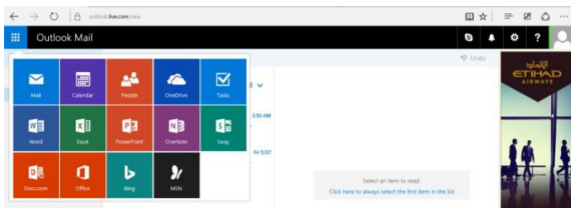
- B) When you click on “Sign in with a Microsoft account instead”, Microsoft login window will open, here you can create new account or Login using your existing one



Once you login to Microsoft account, it will ask your current device password, if you have assigned password/pin to your device then enter and click next, If not just click next. You can either use your password or you can also use a PIN as a password.

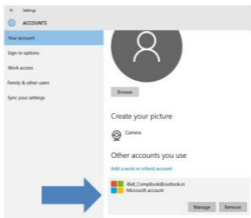
Once everything is done you can use the default mail app to check your mails or else you just have to start “Microsoft edge” browser and enter “Outlook.live.com”, it will directly log you into your account of Microsoft.

You can also use all the web apps provided by the Microsoft in your account

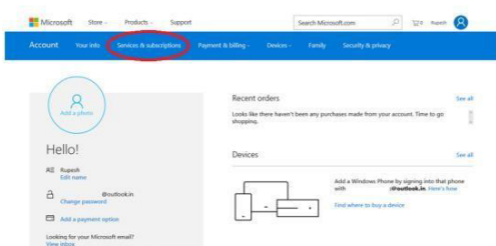


You will also get 5GB OneDrive storage for saving your data using OneDrive app or directly using Web Browser, You can check your drive storage by going to settings>Accounts>Your Account, Here you have to scroll down and go to “Other account you use”.

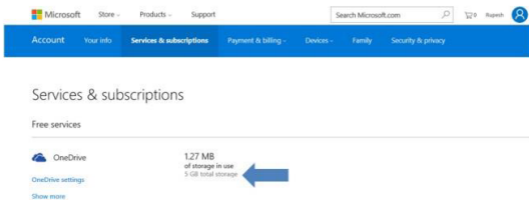
You will see your Outlook account here; Just click on it and click on manage. This will redirect you to your browser and open your account page



Here you need to go to “Services & subscriptions” tab.



You will be redirected to “Services & subscriptions” page where you will see your OneDrive storage details.



Product and safety information

Warning

Use only chargers, and accessories approved for use with this particular model. The use of any other types may invalidate any approval or warranty, and may be dangerous. For availability of approved accessories, please check with your dealer.

Battery and charger information

Your device is powered by a rechargeable Li- Polymer battery. The battery can be charged and discharged many times, but it will eventually wear out. When the working and standby times are noticeably shorter than normal, replace battery. Use only Greatwall approved batteries, and recharge your battery only with Greatwall approved chargers designated for this device. the battery is being used for the first time or if the battery has not been used for a prolonged period, it may be necessary to connect the charger, then disconnect and reconnect it to begin charging the battery. If the battery is completely discharged, it may take several minutes before the charging indicator appears on the display

Safety information

1. Please take care not to drop your GBook and to protect it against sudden impacts.
2. You should avoid using your GBook in any environment where the air is excessively cold, excessively hot ($-10^{\circ}\text{C} \sim 40^{\circ}\text{C}$), too humid or too dusty. Avoid prolonged exposure to direct sunlight.
3. Take care not to use your GBook in areas with strong magnetic fields or around a build - up of static electricity.
4. Do not splash or immerse your GBook with liquid. If your GBook becomes wet shut it down immediately and do not use it.
5. If you need to clean your GBook you should use a clean lint - free soft cloth. Do not use liquids or cleaning agents.
6. No warranty is offered or implied in respect of your data in the event of damage or a fault relating to the use of your GBook. We recommend you keep a duplicate back-up copy of any important data of your GBook.
7. Your GBook contains no user - serviceable parts. Please do not attempt to open the case of your GBook as doing so could be dangerous and will invalidate your warranty.

8. Your GBook supports a wide variety of third-party peripherals including mobile data dongles but you should check compatibility and service provision to make sure they suit your requirements.
9. The battery in GBook is not user replaceable. Please do not attempt to use any power source apart from the original charger supplied With your GBook.

Protect environment

Save energy

You do not need to charge your GBook battery so often if you do the following:

- Close applications and data connections, for example, your Bluetooth connection, Wi-Fi when not in use.
- Deactivate unnecessary sounds, such as App Indication and key tones if any.

FCC Statement

15.19

1. This device complies with Part 15 of the FCC Rules. Operation is subject to the following two conditions:

- (1) This device may not cause harmful interference.
- (2) This device must accept any interference received, including interference that may cause undesired operation.

15.21

Note: The grantee is not responsible for any changes or modifications not expressly approved by the party responsible for compliance. Such modifications could void the user's authority to operate the equipment.

15.105(b)

NOTE: This equipment has been tested and found to comply with the limits for a Class B digital device, pursuant to part 15 of the FCC Rules. These limits are designed to provide reasonable protection against harmful interference in a residential installation.

This equipment generates uses and can radiate radio frequency energy and, if not installed and used in accordance with the instructions, may cause harmful interference to radio communications. However, there is no guarantee that interference will not occur in a particular installation. If this equipment does cause harmful interference to radio or television reception, which can be determined by turning the equipment off and on, the user is encouraged to try to correct the interference by one or more of the following measures:

- Reorient or relocate the receiving antenna.
- Increase the separation between the equipment and receiver.
- Connect the equipment into an outlet on a circuit different from that to which the receiver is connected.
- Consult the dealer or an experienced radio/TV technician for help

RF Exposure Statement

The SAR limit of USA (FCC) is 1.60W/kg averaged over one gram of tissue. Device types W1410A (FCC ID: P3S-W1410A) has also been tested against this SAR limit. The highest SAR value reported under this standard during product certification when properly worn on the body is 0.165W/kg. This device was tested for typical body-worn operations with the back of the handset kept 0mm from the body. To maintain compliance with FCC RF exposure requirements, use accessories that maintain a 0mm separation distance between the user's body and the back of the handset. The use of belt clips, holsters and similar accessories should not contain metallic components in its assembly. The use of accessories that do not satisfy these requirements may not comply with FCC RF exposure requirements, and should be avoided.

Operating temperature: -20-45°C

Operating frequency range: 2400-2483.5MHz

2.4G Tx Frequency Range: 2412MHz~2472MHz

Outputpower:

Bluetooth For classic:5.6dBm

BLE:7.0dBm

Wifi:12.2dBm

Declaration of Conformity

Hereby,China Greatwall Technology Group Co., Ltd declares that the radio equipment type W1410A of G Book is in compliance with Directive 2014/53/EU.

The full text of the EU declaration of conformity is available at the following internet address:

<http://www.greatwall.cn/>

This device may be used in each EU member state.

The product SAR limit in europe is 2.0W/kg for body.

The highest SAR value for this product when tested was 0.096W/kg for body(0mm).