

Troubleshooting

Problem	Reason	Solution
The Drone LED (16) is blinking	The Drone does not receive a signal	Turn the Drone and handset off and then turn the handset and Drone back on again.
The Drone is not recognised	You are out of reach The handset batteries are too low	Decrease the distance to the Drone Put new batteries into the handset
The propeller is making strange noises After changing the propellers, the Drone does not fly properly	The propeller is damaged The propellers are not installed properly	Replace the propeller Install the propellers properly
The Drone does not rise up after charging	Battery or charger damaged The battery was not charged enough	Replace the battery or charger Always charge the battery until it is fully charged
The Drone LED (16) are blinking and the Drone does not have full power	The battery is empty	Recharge the battery
The four trim buttons (3, 4, 5, and 6) are not balancing the Drone	The Drone has become unbalanced following a crash	Hold the Throttle Joystick (1) to the bottom left and the Directional Joystick (2) to the upper right simultaneously for about 4 seconds. This should now be calibrated. See page 4.
Drone does not flip	You have the drone in Juice mode	Switch to Pro mode

Manufacturer's Name: China Industries Ltd. T/A Wow! Stuff  
Manufacturer's Address: Creative Industries Centre, Wolverhampton Science Park, Wolverhampton, WV10 9TG, UK  
Type of Equipment: Ai Pocket Drone  
Model Number: TX-1025  
Year of Manufacture: 2016  
Receiver Category: 3  
Application of Council Directive(s): 2014/53/EU The Radio Equipment Directive  
Standard(s) to which Conformity is Declared: EN62479, EN62115, EN301 489-1/3, EN300 440-1/2  
We declare on our sole responsibility that his equipment complies with the essential requirements of the Radio Equipment Directive, 2014/53/EU, and that any applicable Essential Test Suite measurements have been performed  
CE versions of the Ai Pocket Drone (MN: TX-1025) which display the CE symbol on the product label, comply with the essential requirements of the Radio Equipment Directive 2014/53/EU.

Place: Wolverhampton, UK  
Date: May 2016

Dr. Graeme Taylor  
Director

**CE**

**DECLARATION OF CONFORMITY**

**Wow! STUFF**

Distributed by: China Industries Ltd. T/A Wow! Stuff,  
Creative Industries Centre, Wolverhampton Science Park,  
Wolverhampton, WV10 9TG. © Copyright. All rights reserved.

www.wowstuff.com

Designed by TX Juice in the UK, California and Asia.  
Manufactured and assembled in China.

For the most updated instructions as well as Tips & Tricks go to: [www.txjuice.com](http://www.txjuice.com)

Operating Safety Instructions

- When using indoors, choose a spacious, obstacle-free area and ensure that the device is operated away from fans and air conditioners as these may affect air flow.
- When using outdoors, choose a fine, calm day. It is not recommended to fly the product in winds over 5mph. Power consumption will increase when operating in strong winds, which can also affect proper control of the product and may result in damage. Operation away from crowds, ponds, residential buildings and trees is recommended. Do not operate in the rain or snow or near to any high voltage cables.
- This product is not intended for use by individuals (including children) with reduced physical, sensory or mental capabilities or lack of experience and / or knowledge, unless they are supervised by a person responsible for their safety and is able to give instructions about how the product should be used.
- After you have used the product, always allow the motor, electronics and battery to cool down especially before recharging.

Safe Usage and Maintenance

- If not in use for a long time, remove batteries from the controller.
- Ensure that the device is placed away from heat sources.
- Do not place in water as this may cause a short circuit of the circuit board.
- Do not expose the product to extreme temperatures.
- Always keep the product clean, use a damp cloth to clean, followed by a dry cloth to wipe water away. Never use chemicals to clean the product.
- Long operation time may generate high heat levels causing wear and tear. To extend product life, operators are recommended to allow a 10-15 minute cool down period before recharging batteries.
- Keep this instruction manual for future use.

Attention!

Before operating, Switch the handset on first, then the Ai Pocket Drone.  
When finished: First switch off the Ai Pocket Drone, then the handset.

Replacing the Propellers

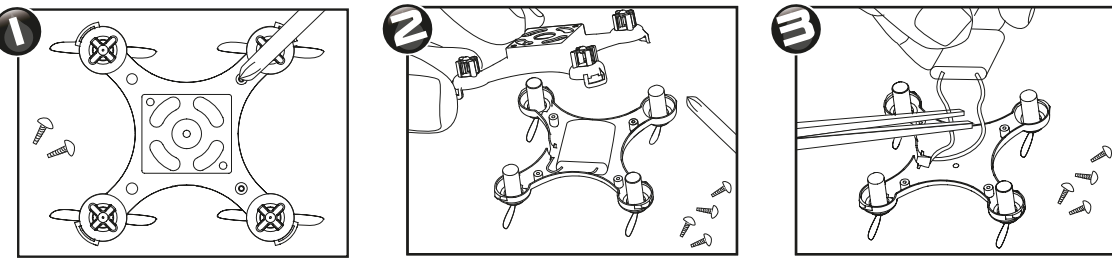
It is recommended to use tweezers in order to replace the propellers. Use the tweezers to remove the propellers from the centre axle by pulling it upwards. Then use a new propeller and insert this by pushing in onto the axis.  
Each propeller is engraved with a code to identify its location on the Ai Pocket Drone.  
The propellers are either marked A or B, and the same lettered spares must be used on each, for example if an A is damaged it must be replaced by another A propeller. There are 8 spare propellers included. Note that although its best to have yellow at front and black propellers at the rear, mixed colours at front and rear can be used with no impact on flights. The direction of flight can still be seen by the green (front) and red (rear) LED's on the Ai Pocket Drone.

Disposal of Ai Pocket Drone

Disposal of Li-poly battery instructions

(Only follow these instructions when you wish to dispose of your Ai Pocket Drone).

**Warning:** Batteries should only be removed by an adult. Children should not be allowed to carry out the following procedure.



**WARNING: CUTTING BOTH WIRES AT THE SAME TIME MAY CAUSE A SHORT CIRCUIT & POTENTIALLY DANGEROUS RISK OF THE BATTERY OVERHEATING**

WARNING:

CHOKING HAZARD – Small Parts

Not suitable for children under 3 years

Please retain this information for future reference.

Adult supervision required. Operates on 2.4 GHz frequency.

Before first use : read the user's information carefully together with your child. Keep the instructions and packaging after reading it. •Check if the product is assembled as instructed. •Do not change or modify anything on the product. •Warning! Do not touch the rotating propeller. •Keep face, eyes, fingers, hair, body parts etc away from moving parts. •Always fly in an open space. •Do not expose to rain or moisture. •Do not fly in a crowded environment. •Do not fly in a dusty area. •Do not fly in complete darkness. •Ensure people know that you are flying the product. •Use only the handset included in this package. •Always turn "OFF" when not in use. •Contains battery. Battery must be recycled or disposed of properly. •Do not start the product when persons, animals or any objects are within flying range of the product. •Children should be supervised when playing with the product. •Do not fly near your face to avoid injuries.

**Caution! Risk of eye injuries! Keep a safe distance of at least 2.5m.**

Battery Information

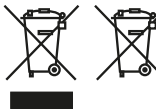
- Non-rechargeable batteries are not to be recharged.
- Rechargeable batteries are only to be charged under adult supervision.
- Rechargeable batteries are to be removed from the toy before being charged.
- Do not mix old and new batteries.
- Do not mix alkaline, standard (carbon-zinc) or rechargeable (Ni-Cd) batteries.
- Batteries are to be inserted with the correct polarity.
- Exhausted batteries are to be removed from the toy.
- The supply terminals are not to be short-circuited.
- Contains Li-poly battery. Battery must be recycled or disposed of properly.

Always :

- Make sure battery compartments are secure.
- Use batteries of the correct size and type.
- Fit batteries correctly observing the plus and minus marks on the battery and compartment.
- Replace a whole set of batteries at one time.
- Remove exhausted batteries from equipment.
- Remove batteries from appliance that will not be used again for a long time.
- Please remember that all batteries should be kept away from young children as they could be easily swallowed. Seek medical advice if you believe a cell has been swallowed.
- Please ensure that batteries are installed by an adult prior to use.

Never

- Never dispose of batteries in a fire.
- Consumers have a significant role to play in reducing the impact of waste, electrical and electronic equipment on the environment, you can help by re-using or recycling such equipment.



The crossed out wheeled-bin symbol indicates that the product & batteries must not be disposed of in domestic waste as they contain substances which can be damaging to the environment and human health. If you cannot re-use or recycle the product or batteries, please use designated collection points, or civic recycling facilities to dispose of them.

This device complies with Part 15 of the FCC Rules. Operation is subject to the following two conditions: (1) this device may not cause harmful interference, and (2) this device must accept any interference received, including interference that may cause undesired operation.

**Warning:** Changes or modifications to this unit not expressly approved by the party responsible for compliance could void the user's authority to operate the equipment.

**NOTE:** This equipment has been tested and found to comply with the limits for a Class B digital device, pursuant to Part 15 of the FCC Rules. These limits are designed to provide reasonable protection against harmful interference in a residential installation. This equipment generates, uses and can radiate radio frequency energy and, if not installed and used in accordance with the instructions, may cause harmful interference to radio communications. However, there is no guarantee that interference will not occur in a particular installation. If this equipment does cause harmful interference to radio or television reception, which can be determined by turning the equipment off and on, the user is encouraged to try to correct the interference by one or more of the following measures:

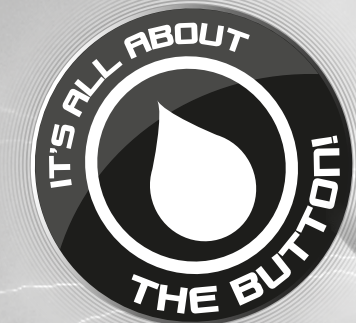
- Reorient or relocate the receiving antenna.
- Increase the separation between the equipment and receiver.
- Connect the equipment into an outlet on a circuit different from that to which the receiver is connected.
- Consult the dealer or an experienced radio/TV technician for help.

Battery requirement for Handset

Rating: 4 x 1.5V AA batteries (not included)

txJuice®

14+



ARTIFICIAL INTELLIGENCE

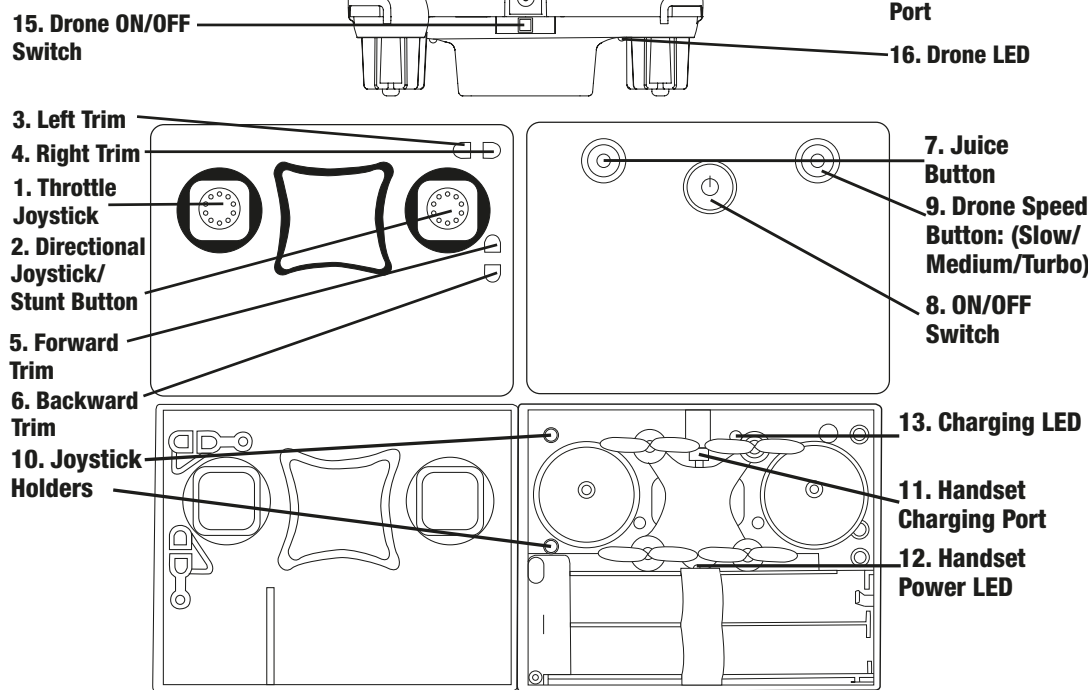
**Ai POCKET™  
DRONE**  
INSTRUCTION MANUAL

BC

For the most updated instructions as well as Tips & Tricks go to: [www.txjuice.com](http://www.txjuice.com)

Contents

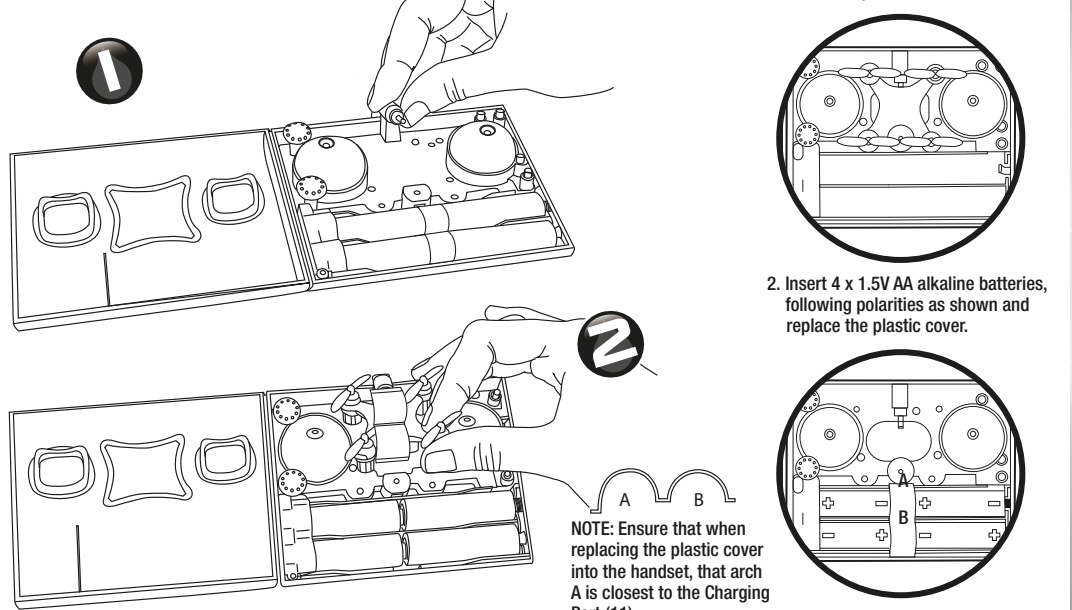
- Ai Pocket Drone with in-built Li-poly re-chargeable battery
- 2.4GHz Pocket Drone handset. Uses 4 x AA 1.5V batteries (not included)
- 2 x joysticks (plus 2 x spare joysticks)
- 8 x spare propellers (2 x sets)
- Full instructions for Use



**NOTE:** Your Drone is shipped with protection covers over the plastic parts which can be removed. See the three highlighted areas above. **DO NOT** remove the adhesive strip on the left side of the handset as this is its hinge.

For the most updated instructions as well as Tips & Tricks go to: [www.txjuice.com](http://www.txjuice.com)

Charging



The Ai Pocket Drone charges directly from its handset, which is also its controller. It can even charge while in your pocket!

1. Turn the Drone ON/ OFF Switch (15) to OFF position and press the Handset ON/OFF Switch (8) to ON. A single Beep will be heard, and red LED inside the casing will go on.
  2. Tilt the Handset Charging Port (11) slightly upwards, and insert into the Drones Charging Port (14), so the Drone sits flat in the handset.
  3. The Charging LED (13) on the handset lights up during charging, and goes off when charging is completed.
  4. Charging takes approximately 40 minutes, for 5-6 minutes of flying time
  - Note:** In case the Charging LED (13) does not light up, then the Drone is either fully charged or the contact to the Handset Charging Port (11) is interrupted. If this happens, reinsert Drone to Charging Port (11) to resume charging.
  5. Choose speed of the Drones flight by pressing down the Drone Speed Button (9). Beeps can be heard, 1 for Slow, 2 for Medium and 3 for Fast speed flights. It is recommended you fly at the slowest speed setting when learning to fly the Drone.
  6. Trimming the Drone. To have fully controlled, balanced flights, it's important the Drone is trimmed properly. To do this, place the Drone on the floor in plenty of open space with front (green lights) pointing away from you. Gently push forward the Throttle Joystick until the Drone just lifts off the ground. When perfectly trimmed the Drone flies straight up. Adjust Trim Buttons (3,4,5,6) by pressing the direction opposite to the Drones movement, until it's close to moving straight upwards. Also see our Auto Trim feature on page 4.
- You are now ready to fly your Ai Pocket Drone. There are 2 flight modes to choose between - Juice Mode and Pro Mode.

Flying the Ai Pocket Drone in Juice Mode

**\*Note:** Juice Mode makes the Drone easier to fly, however you cannot do 360 degree flips in this mode.

To do this switch to Pro Mode (see below)

1. Carry out all the steps 1-4 above, then Press the Juice Button (7). The Drone will now fly upwards and remain hovering at approximately 1m from the ground. When in this mode the Drone's proximity sensors are active. This means it will fly up 1m above any object underneath. It also means the Drone can be flown just by using the Directional Joystick/ Stunt Button (2), making it much easier to fly!
  2. Fly the Drone left, right, forward and back using the Directional Joystick/ Stunt Button (2).
  3. When you wish to stop the flight, press Juice Button (7) and the Drone will land and propellers will stop.
- Note:** The Juice mode will not work effectively outdoors and in bright sunshine due to the infra-red proximity sensors. In these conditions Pro Mode (see on page 4) is recommended. Also you cannot perform flips in Juice Mode, to do so you need to be in Pro Mode.

For the most updated instructions as well as Tips & Tricks go to: [www.txjuice.com](http://www.txjuice.com)

Flying the Ai Pocket Drone in Pro Mode

1. Carry out all the steps 1-6 (on page 3), then move the Throttle Joystick (1) forward, and the Ai Pocket Drone will take to the air.
2. Control flight height with the Throttle Joystick (1) and direction with the Directional Joystick/ Stunt Button (2).
3. 360 degree flips can be performed only once the Ai Pocket Drone is stable in its flight (Pro Mode). Press down on the Directional Joystick, and flick this joystick in one direction (Left, right, forward, back). The Ai Pocket Drone will then perform a 360 degree flip in this direction.
4. Land the Ai Pocket Drone at any time by moving the Throttle Joystick (1) completely back. For a smooth landing, do this slowly and steadily.

Where to Fly the Ai Pocket Drone

The Ai Pocket Drone is best flown indoors, though in calm weather conditions it can also be flown outside. When flying indoors choose a spacious, flat, obstacle free area, away from strong drafts, fans or air conditioners, as these can affect airflow and make controlling flights very difficult. Only attempt to fly outdoors on a very calm day (wind less than 5mph) with no rain, snow or water on the ground. Never fly near crowds of people, pets or other animals, near ponds, or any other water, and keep well away from any high voltage power lines.

Flying the Ai Pocket Drone & using the stunts feature (?)

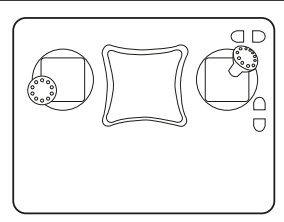
Your Ai Pocket Drone is fitted with a power-on fail-safe. This is designed to ensure that the Ai Pocket Drone motor will not start unless it detects a suitable radio-control signal.

1. For transport reasons the Joysticks (1 and 2) are plugged in the Joystick Holders (10) inside the handset. Before flying, remove the Joysticks (1 and 2) and only plug-in the joysticks after closing the handset casing.
2. Make sure that the Throttle Joystick (1) is positioned downwards (no throttle is given) and turn on the handset. The handset will beep once and the Handset Power LED (12) will light up.
3. Switch on the Ai Pocket Drone and place this on a spacious flat ground (red Ai Pocket Drone LED (16) closest). At this time avoid moving the Ai Pocket Drone so the radio and gyro system can initialize. The Ai Pocket Drone LED (16) will blink.
4. Move the Throttle Joystick (1) up and then back down again until the Ai Pocket Drone LED (16) stops flashing and 2 beeps are heard. The handset is now paired with the Ai Pocket Drone.
5. Before first flight, reset the calibration of the Ai Pocket Drone in order to ensure it is accurately balanced. See Auto Trim Feature below.
6. Begin flights with the Ai Pocket Drone facing away from you (red Ai Pocket Drone LED (16) closest). Push the Throttle Joystick (1) forwards until the Ai Pocket Drone takes off and hovers. Then, use Directional Joystick (2) to move the Ai Pocket Drone in any direction.
7. When ready to land, slowly reduce the power by moving the Throttle Joystick (3) downwards until it is at its lowest position as it touches the ground. Practice makes perfect - how smooth a landing can you get?!

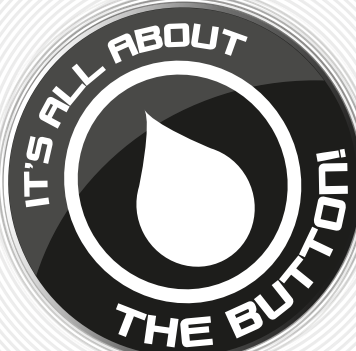
AUTO TRIM FEATURE

Resetting the Calibration

After every crash or bad landing it is recommended to reset the trimming and calibration: Hold the Throttle Joystick (1) to the bottom left and the Directional Joystick (2) to the upper right simultaneously for about 4 seconds. The LED will flash fast. This should now be calibrated.



For the most updated instructions as well as Tips & Tricks go to: [www.txjuice.com](http://www.txjuice.com)



**THE JUICE BUTTON  
ACTIVATES AUTO TAKE-OFF,  
AUTO-HOVER & AUTO-LAND**



**Tricks &  
Tips for  
Great  
Flights!**

Visit Ai Pocket Drone at  
[www.txjuice.com](http://www.txjuice.com)

For the most updated instructions as well as Tips & Tricks go to: [www.txjuice.com](http://www.txjuice.com)