



CWFF202 Series

User's Manual

(Only for Internal Reference)

Revision 01

2013/07/30

Prepared By: Alex Cheng

Revision History

Revision	Date	Notes	Owner
01	2013/ 07/ 30	Initial Release	Alex Cheng

TABLE OF CONTENT

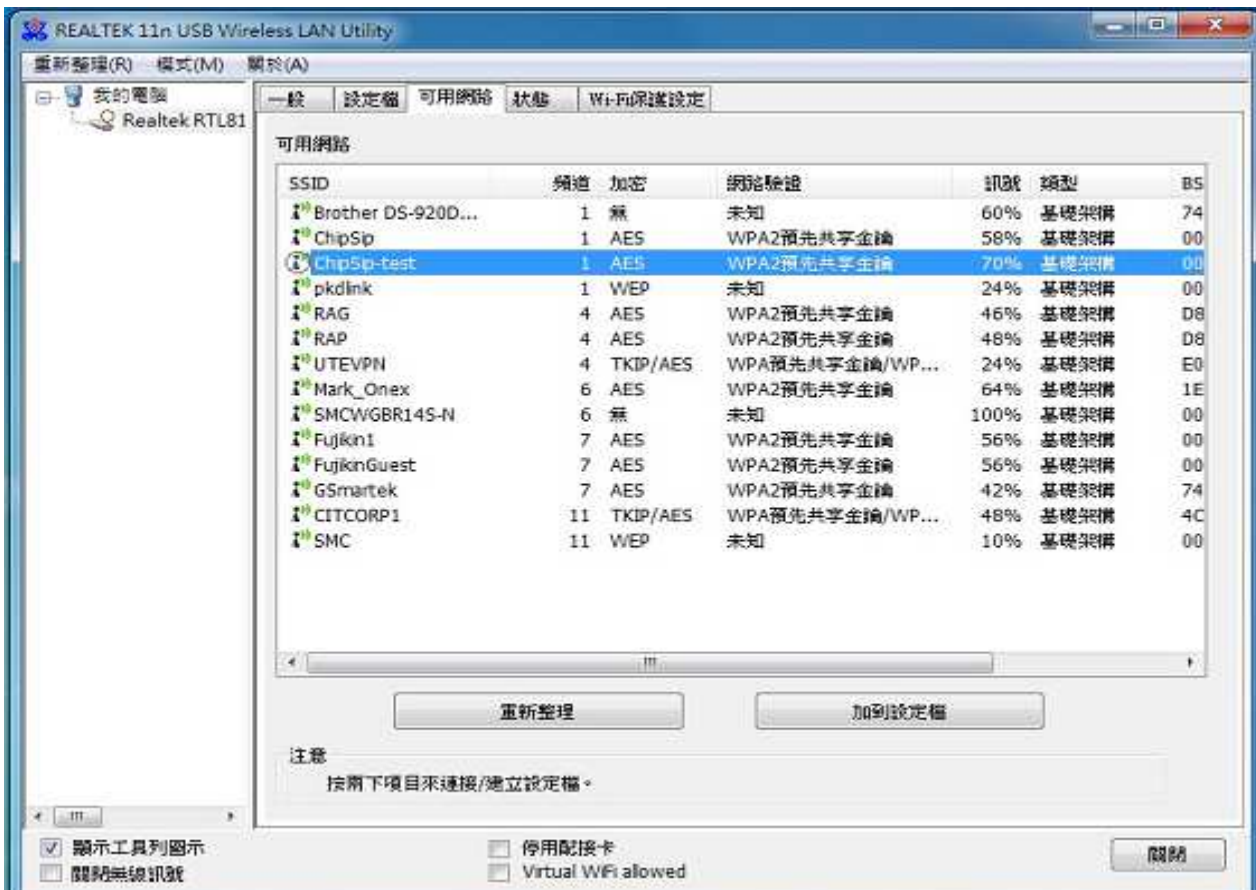
1. Install and start the application on your system	4
2. Product specification	6
3. FCC Statement	9

1. Install and start the application on your system

- (1) Please install the product Driver.
- (2) After installed the Driver, you will see the REALTEK USB Wireless LAN Utility on you system.
- (3) Plug in the WiFi dongle on your system.
- (4) Double click it to execute “REALTEK USB Wireless LAN Utility”



- (5) Select an available Access Point ,and then connect it.



(6) Check the network quality



2. Product specification

Description

Chipsip Solution is a small-sized, 802.11abgn USB that achieves a data rate up to 300Mbps. It is 6 times faster than the legacy 11abg but is good performance.

This product supports Client mode. It is ideal for multi-purpose installation in Windows and, Linux environment to share wireless connection.

By supporting 64/128-bits WEP, TKIP, WPA, WPA2 and WPS, helps to protect your data and privacy during transmission.

This module could be used for Desktop/NB and embedded platform that need 5GHz frequency band and could be mounted on system board like IPTV, STB, Media Player, Femto, XDSL, Cable Modem, Industrial PC, Ethernet Switch, Printer Connected TV, Smart Phone which have USB host device.

Features

- Realtek RTL8192DU chipset with USB 2.0 slave interface.
- Data Rate up to 300Mbps
- Security: 64/128-bits WEP, TKIP, WPA, WPA2, AES
- Windows/Linux driver supported



Specification

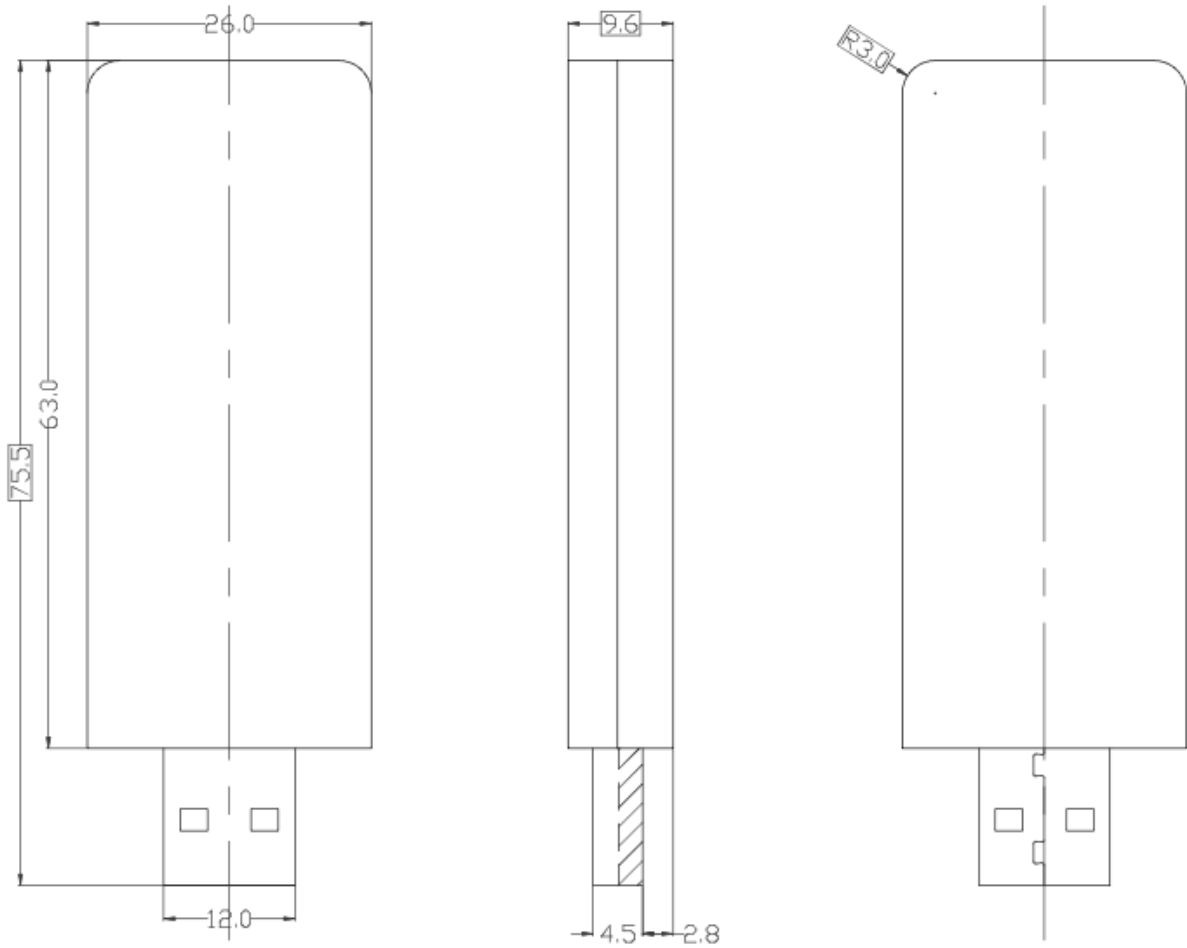
Hardware Features:

Standard	IEEE 802.11 a/b/g/n
Wireless LAN	2T2R mode (5GHz 1x1 and 2.4GHz 1x1)
Antenna	Print antenna on board (2 dBi)
Interface	USB slave port
Frequency Range	802.11a 5.180~5240 GHz(babd1) 、 5.745~5825 GHz(babd4) 802.11b/g 2.4~2.484GHz 802.11n 2.4~2.484GHz and 5.180~5240 GHz(babd1) 、 5.745~5825 GHz(babd4)
Data Rate	802.11b: 1, 2, 5.5, 11Mbps 802.11g: 6, 9, 12, 18, 24, 36, 48, 54Mbps 802.11a: 6, 9, 12, 18, 24, 36, 48, 54Mbps 802.11n: 6.5, 13, 19.5, 26, 39, 52, 58.5, 65Mbps
Receiver Sensitivity	11an/gn -66dBm at HT40 (MCS7) 11an/gn -67dBm at HT20 (MCS15) 11a/g -72dBm at 54Mbps 11b -80dBm at 11Mbps
Software Supports	Windows XP/ Vista/ Windows 7/ Linux driver
Range	Indoors: up to 50~100 meters indoor
Power Requirement	DC 5V/ 0.5A Max through USB voltage
Operating Temperature	0 ~ 45°C
Dimension	75.5 x 26 x 9.6 mm
Certifications	FCC/CE by request

Product Dimension and Drawing

Product outline size: about 75.5 x 26.0 mm

Mechanical Drawing: (unit: mm, tolerance: $\pm 0.15\text{mm}$)



3. FCC Statement

Federal Communication Commission Interference Statement

This equipment has been tested and found to comply with the limits for a Class B digital device, pursuant to Part 15 of the FCC Rules. These limits are designed to provide reasonable protection against harmful interference in a residential installation. This equipment generates, uses and can radiate radio frequency energy and, if not installed and used in accordance with the instructions, may cause harmful interference to radio communications. However, there is no guarantee that interference will not occur in a particular installation. If this equipment does cause harmful interference to radio or television reception, which can be determined by turning the equipment off and on, the user is encouraged to try to correct the interference by one of the following measures:

- Reorient or relocate the receiving antenna.
- Increase the separation between the equipment and receiver.
- Connect the equipment into an outlet on a circuit different from that to which the receiver is connected.
- Consult the dealer or an experienced radio/TV technician for help.

FCC Caution: Any changes or modifications not expressly approved by the party responsible for compliance could void the user's authority to operate this equipment.

This device complies with Part 15 of the FCC Rules. Operation is subject to the following two conditions: (1) This device may not cause harmful interference, and (2) this device must accept any interference received, including interference that may cause undesired operation.

For product available in the USA/Canada market, only channel 1~11 can be operated. Selection of other channels is not possible.

This device is going to be operated in 5.15~5.25GHz frequency range, it is restricted in indoor environment only.