

Bluetooth Serial Dongle

User's Manual

BTS-100、USBB-BLUE232、CM-BT232



Table of Contents

1. INTRODUCTION.....	2
2. PHYSICAL DIAGRAM.....	3
3. BLUETOOTH PAIRING AND CONNECTING.....	4
4. RS-232 INSTALLATION	10
5. HYPERTERMINAL SETTING & CONFIGURATION	12
6. REGULATORY COMPLIANCE	19

1. Introduction

This Bluetooth Serial Dongle is an ideal solution for cable replacement. It connects serial printers, serial scanners, or other device to a computer by remote up to 100 meters (300ft) away. Free to place device any where one like without modifying the environment for wire layout. This Bluetooth RS-232 dongle can be operated with PDA, computers, laptops, and smart phone that supports Bluetooth RFCOMM profile and Bluetooth generic access profile. As such, it is ideal for use in applications where a PDA or laptop could communicate with another device (SBC, RTU, sensor, robot, radio, PBX) wirelessly.

1.1 Features

- *Extremely easy to install and use.*
- *No need of external host and software*
- *Supports up to 100 meters (300ft) distance (Open space, Line of site).*
- *Standard Bluetooth Specification Version 2.1*
- *Frequency 2402 ~ 2480 MHz*
- *Baud Rate Supports 9.6/19.2/38.4/57.6/115.2/230.4 kbps*
- *Modulation GFSK-1 Mbps*

1.2 Specifications:

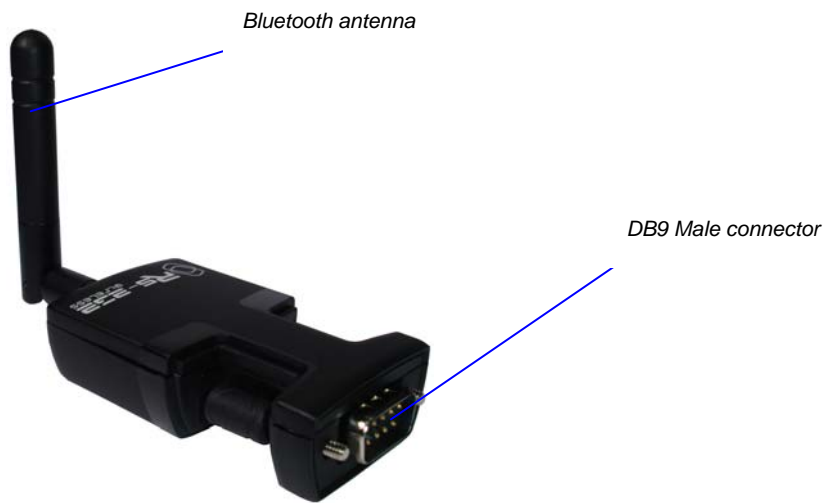
<i>Model No.</i>	<i>BTS-100 、 USBB-BLUE232 、 CM-BT232</i>
<i>Frequency</i>	<i>2402 to 2480MHz</i>
<i>Connector</i>	<i>DB-9 Male</i>
<i>Standard</i>	<i>Bluetooth specification version 2.1</i>
<i>Tx Power</i>	<i>Max. -2.39 dBm</i>
<i>Rx Sensitivity</i>	<i>-86 dBm typical</i>
<i>Power consumption</i>	<i>DC 5V</i>
<i>Housing</i>	<i>Plastic</i>
<i>Dimension (L x W x H)</i>	<i>66 x 39 x 20 mm</i>

1.3 Package Contents

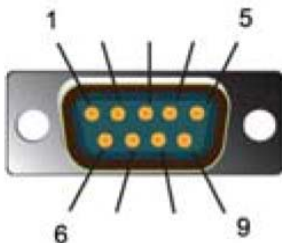
- *Bluetooth Serial Dongle with antenna*
- *DC5V Power adaptor*
- *CD Utility*

2. Physical Diagram

Front view



RS-232 pin out



Pin Assignment		
Pin No.	Definition	Signal Name
1	NC	---
2	RXD	Receive Data
3	TXD	Transmit Data
4	NC	---
5	GND	Ground
6	NC	---
7	RTS	Request to Send
8	CTS	Clear to Send
9	NC	---

Side view

LED Indicators

- (1) RX: Orange
- (2) PWR: Red
- (3) TX: Orange



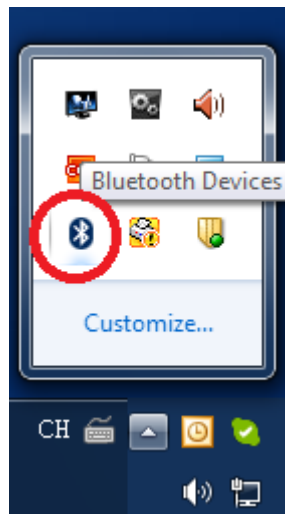
Rear view

- (1) **SETUP** push button
- (2) **DC power jack**

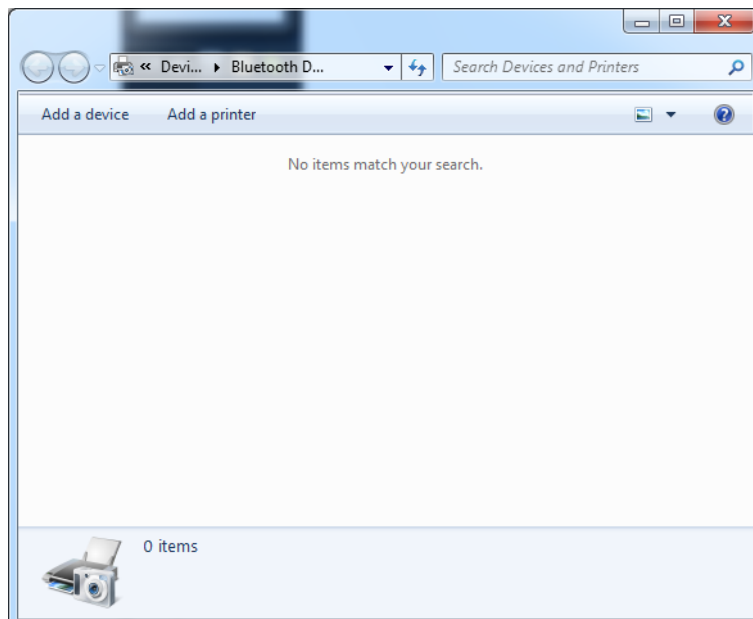


3. Bluetooth pairing and connecting

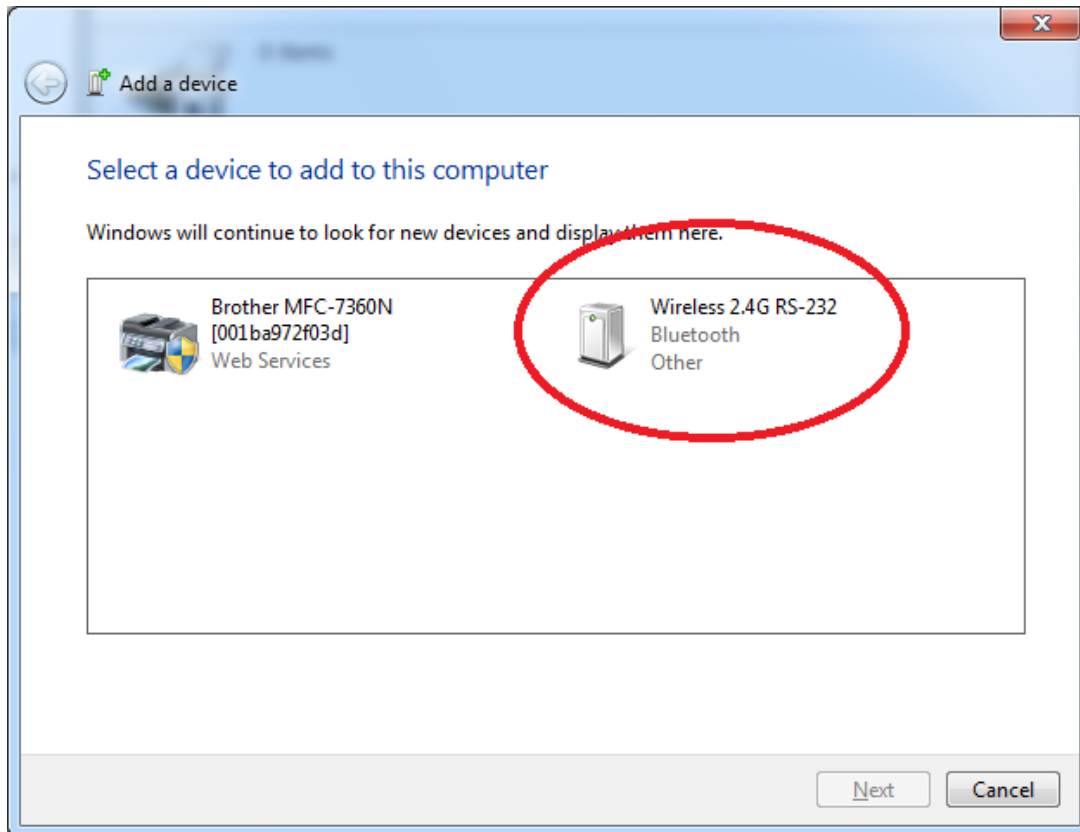
3.1 Click the Bluetooth icon on the taskbar of computer OS and plug the power adapter to the device's power jack. The PWR LED indicator (Red) lights up.



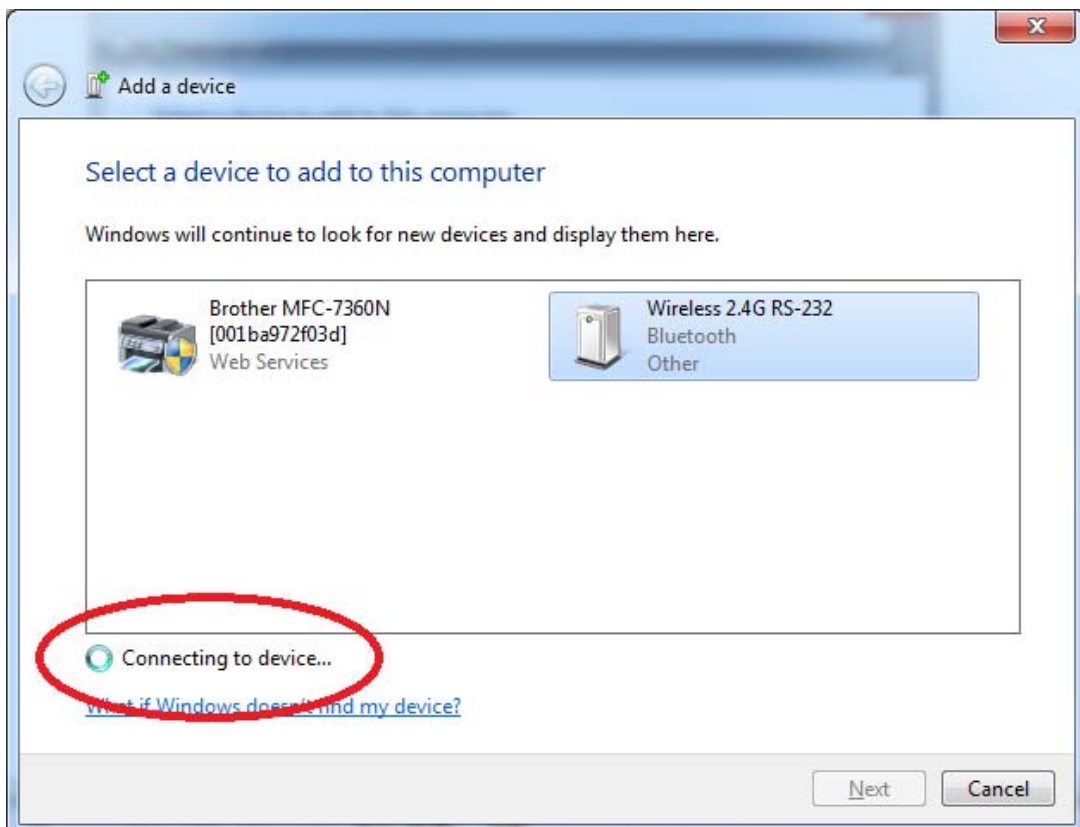
3.2 Use your Bluetooth software and click 'Add a device' to search for Bluetooth devices in range.



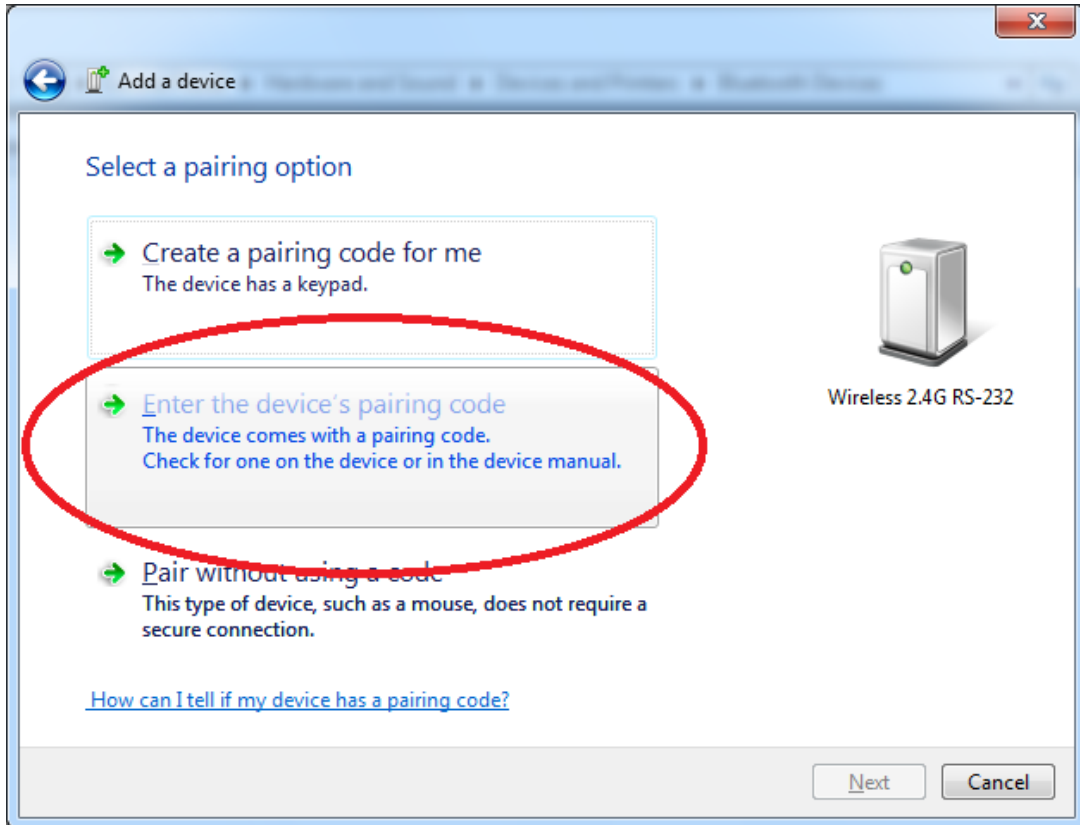
3.3 Once the device is detected, it will show the 'Wireless 2.4G RS232' on the screenshot of 'Add a device'.



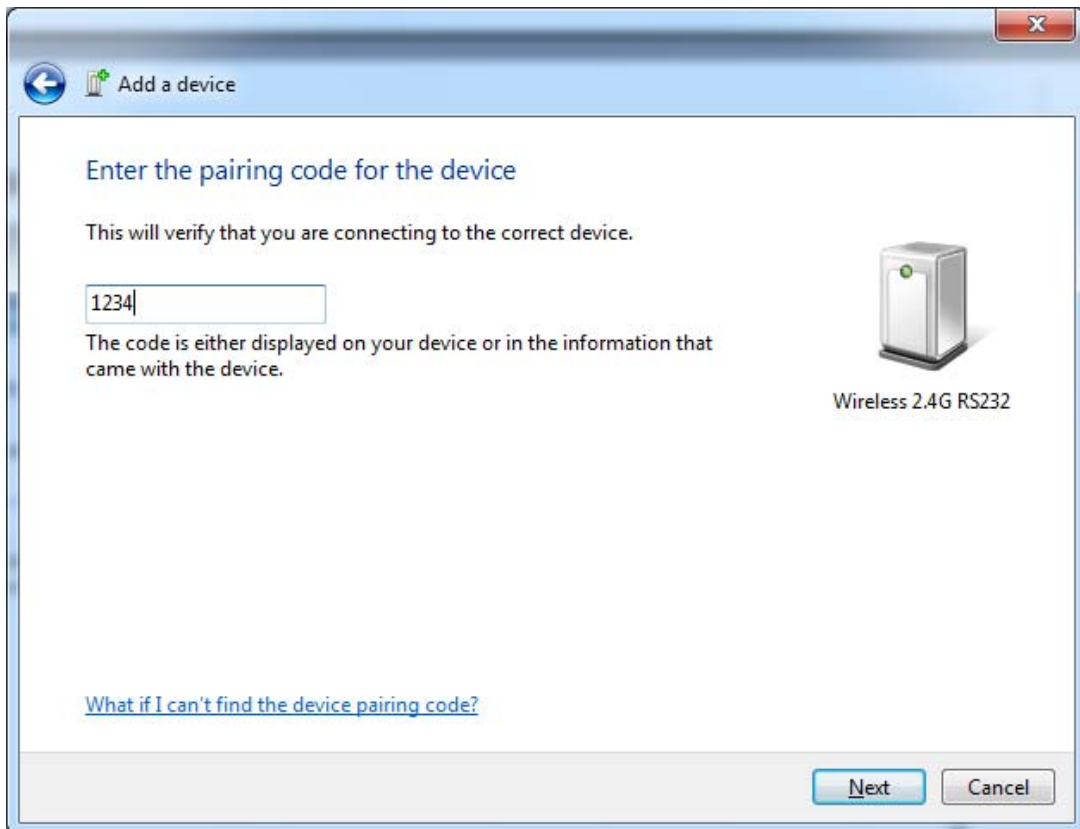
3.4 Click 'Wireless 2.4G RS232' and pair.



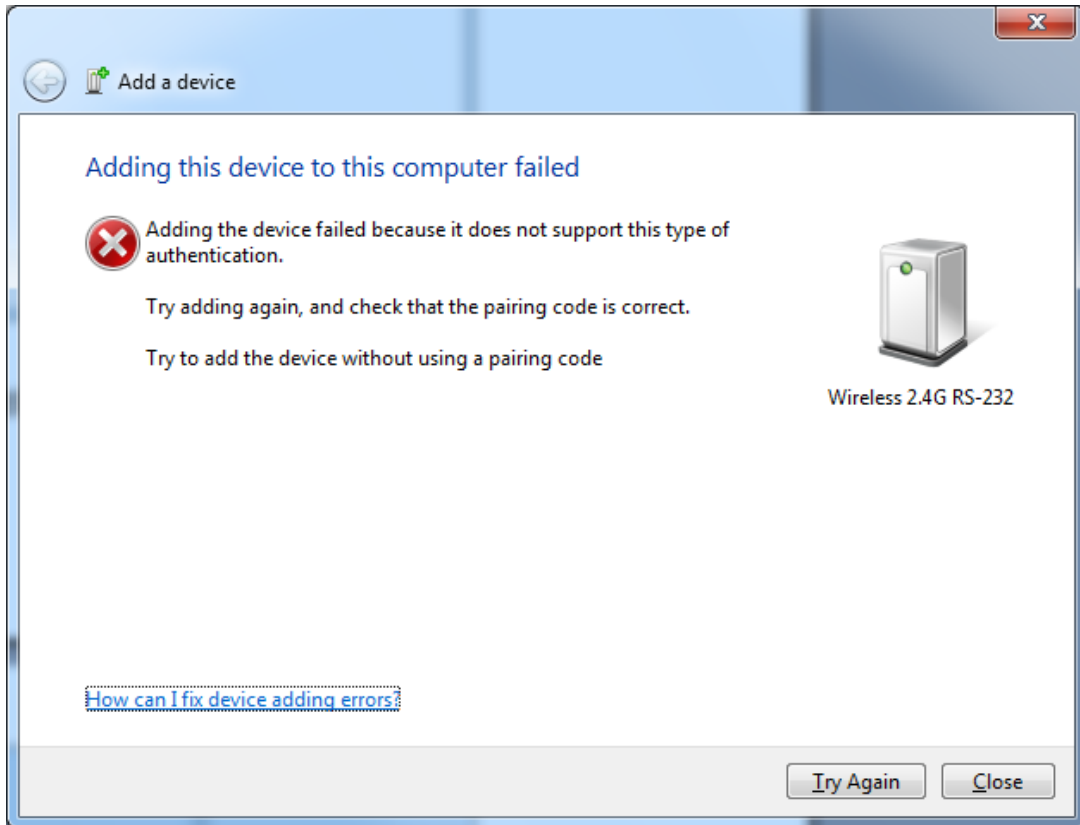
3.5 Click 'Enter the device's pairing code'.



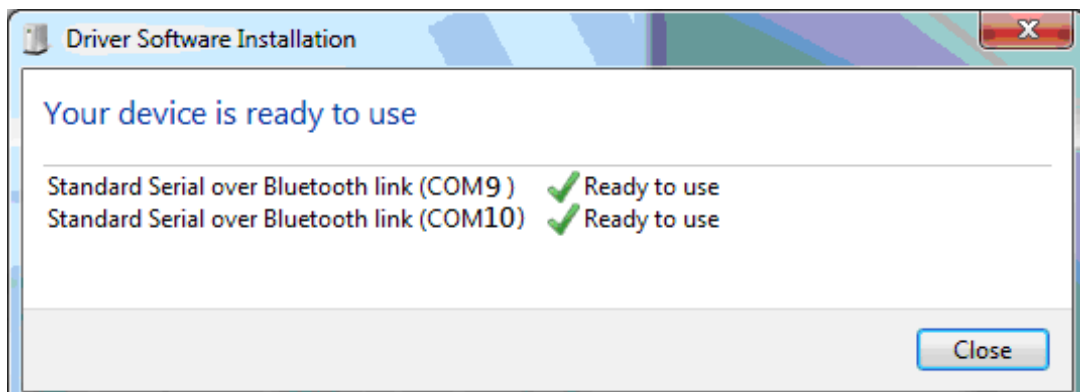
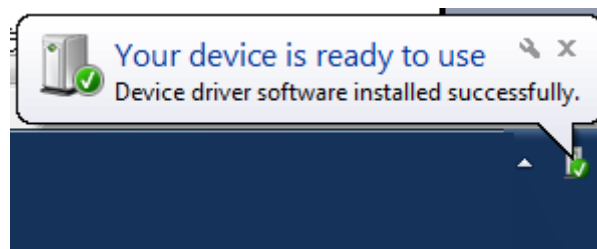
3.6 Enter the pairing code and click 'Next'. (Default is 1234)



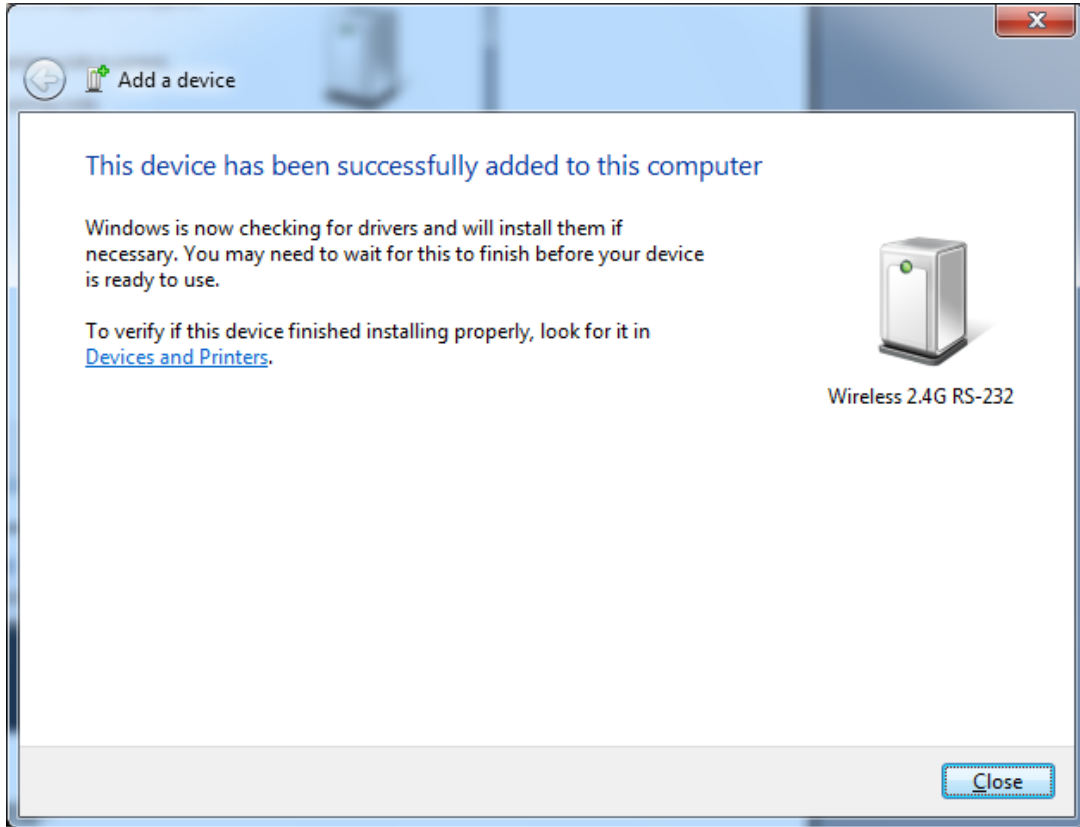
3.7 It may fail to pair and pop up error message if you can not enter pairing code in 60 seconds. Please check your Bluetooth device is working and pair again.



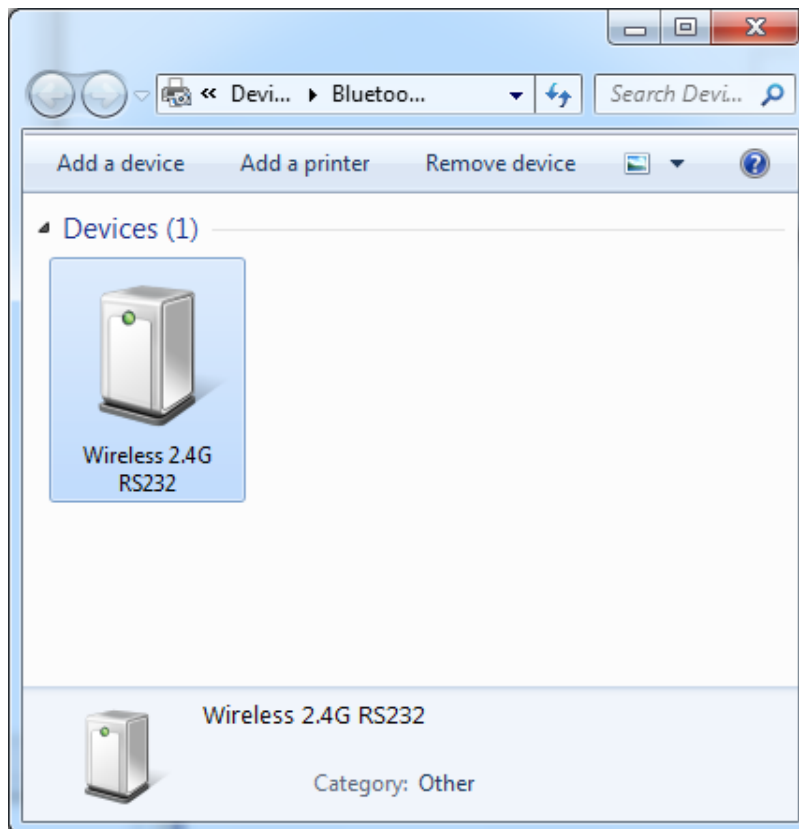
3.8 When the pairing is succeeded, the Bluetooth device will have its COM port number and ready to use. In this case, COM9 & COM10 are distributed to Bluetooth devices.



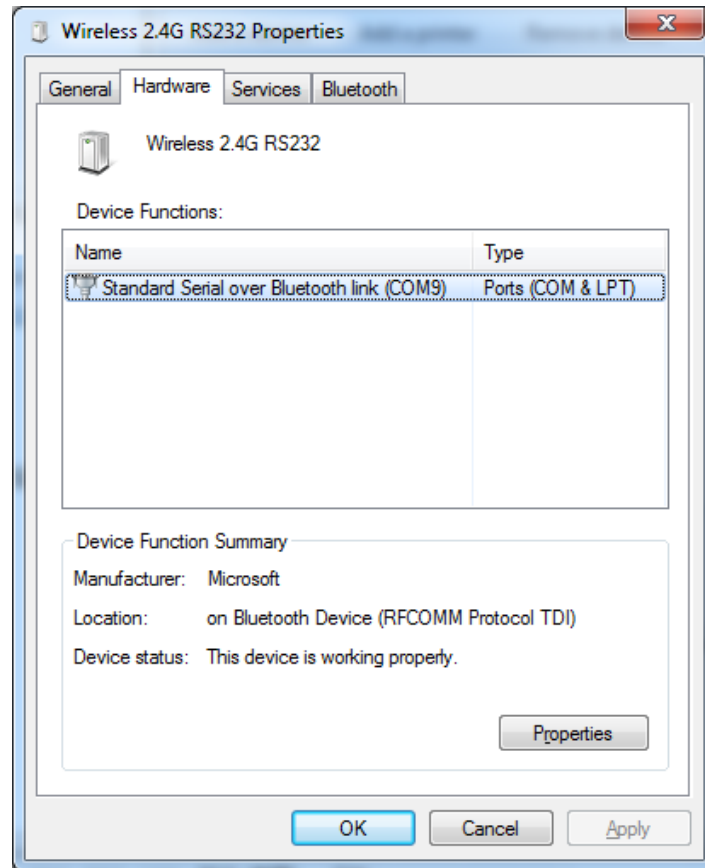
3.9 When the Bluetooth device is connected successfully, click 'Close'.



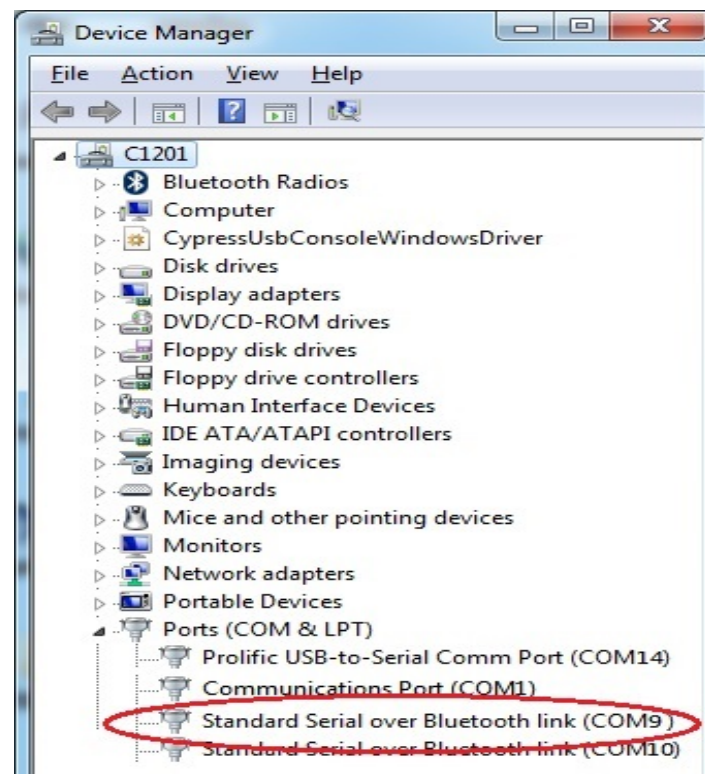
3.10 Click the device icon 'Wireless 2.4G RS232'



3.11 Select 'Hardware' and you will see 'Standard Serial over Bluetooth link (COM9)' in the screenshot that indicates the COM port number used for connection with the Bluetooth device. (Ex. COM9)



3.12 Open the Windows Device manager; it shows a new COM port has been established.



3.13 Congratulation! You have finished pairing the Bluetooth device successfully.



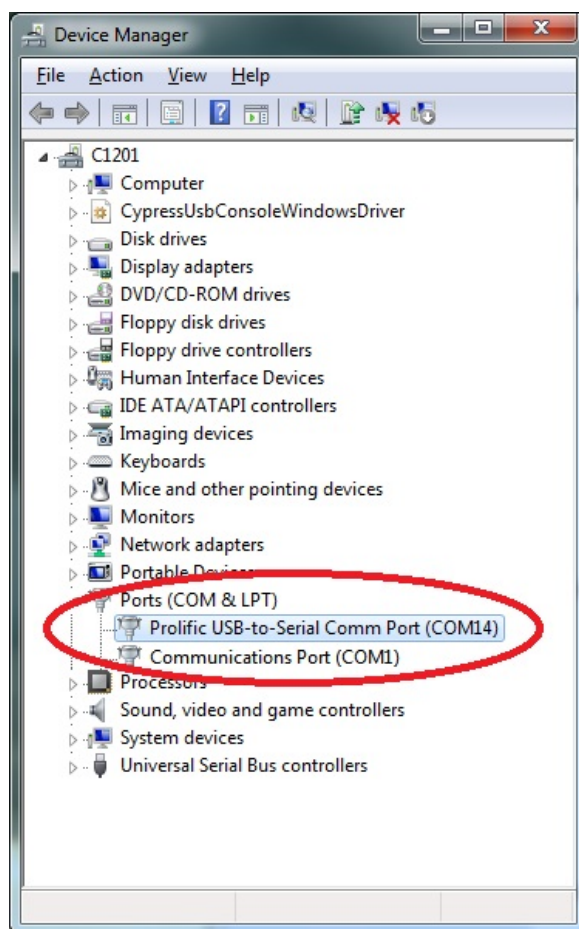
4. RS-232 Installation

Please follow below ways for installation.

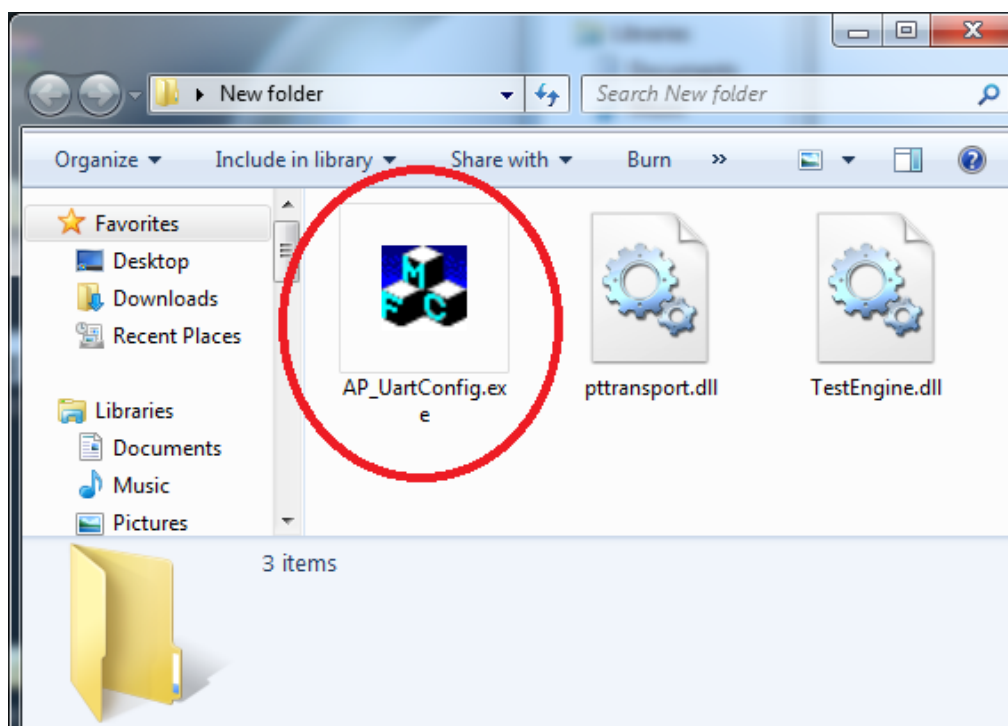
4.1 Take one DB9 F/F cable and plug one end of DB9 female to the Bluetooth device, then put the other end of DB9 female on the host computer. Or use the USB to RS-232 cable and connect with the Bluetooth device.



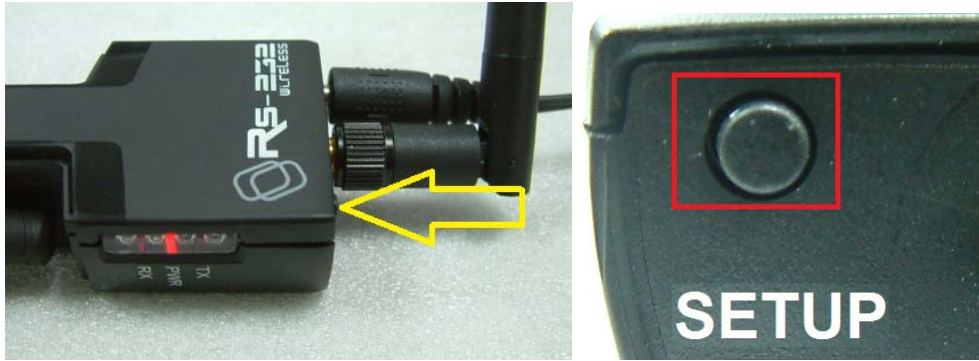
4.2 To further check if the COM port was successfully installed; go to Windows Device Manager where the COM port should be listed under 'Ports (COM & LPT)'. (Ex. COM1 or COM14)



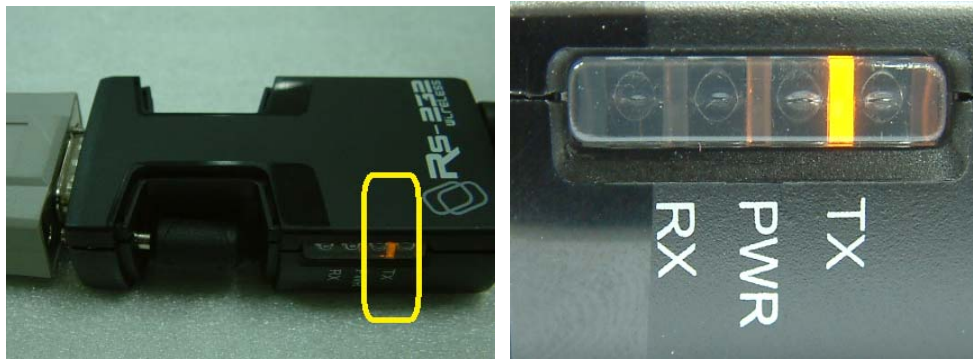
4.3 Install programmer 'AP_UartConfig.exe'.



4.4 Plug the power adapter to the device's power jack. The PWR LED indicator (**Red**) lights up. Push the SETUP button, and the PWR LED indicator will light off.



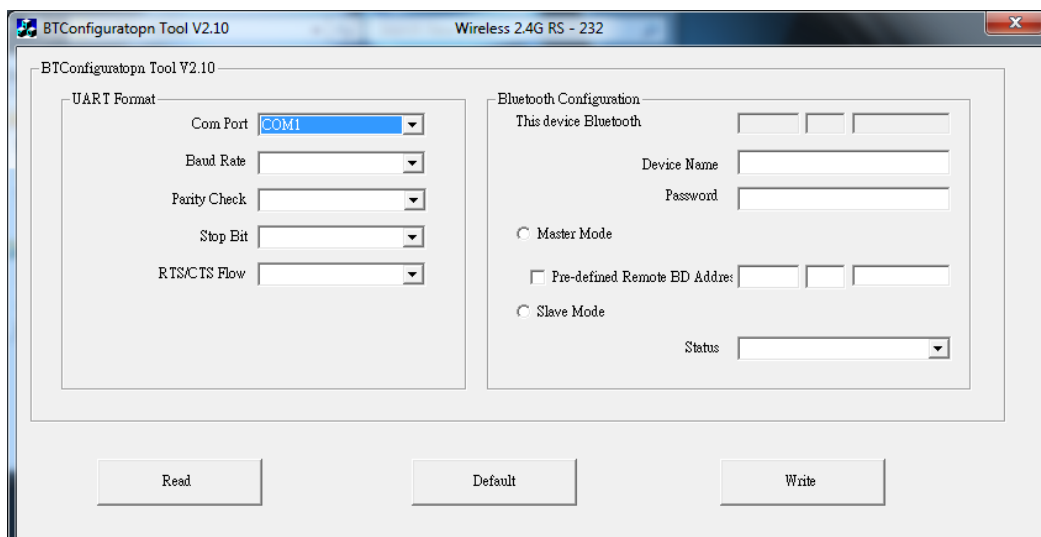
Then the TX LED indicator (**Orange**) should start blinking and go next step for configuration.



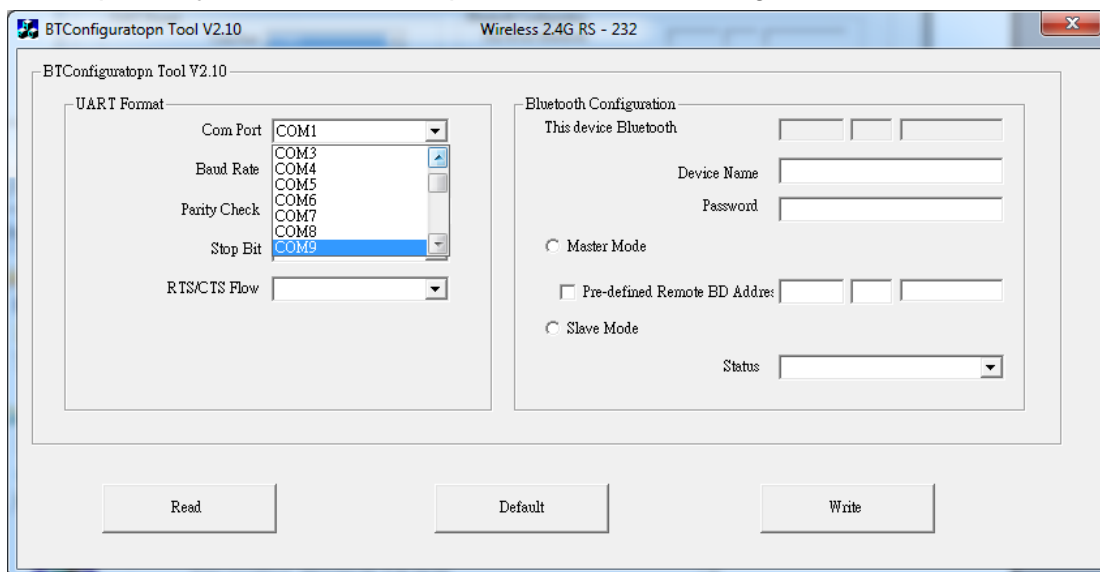
5. HyperTerminal setting & Configuration

The 'AP_UartConfig.exe' programmer only can be operated and compliant with Windows 2000 / XP / Vista / 7 / 8 / 8.1. It is not applicable to operate on Mac OS or Linux.

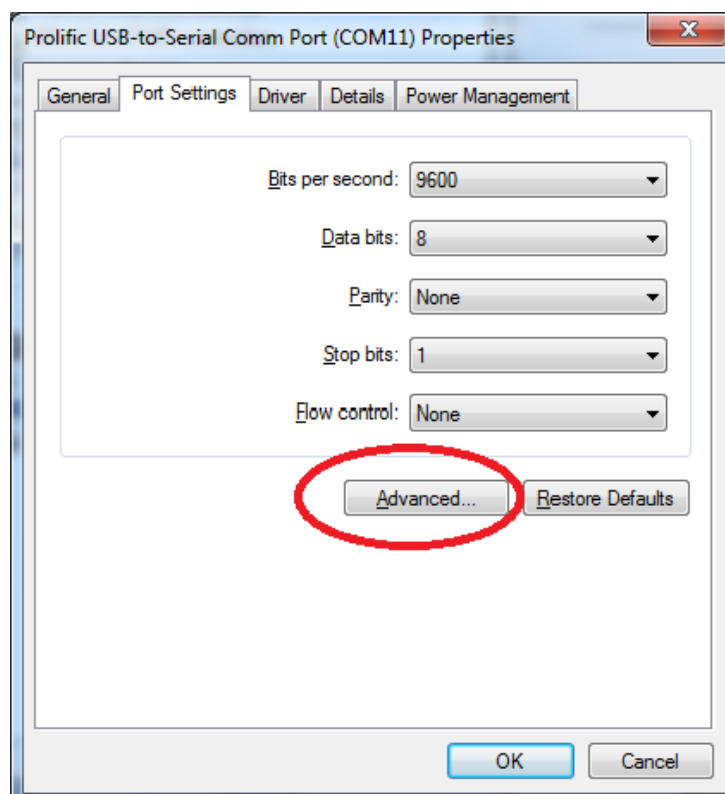
5.1 Click 'AP_UartConfig.exe' → This will open the configuration wizard 'BTConfiguration Tool V2.10', and then enter the correct information. In this case we have created COM port 1 so we select COM1.



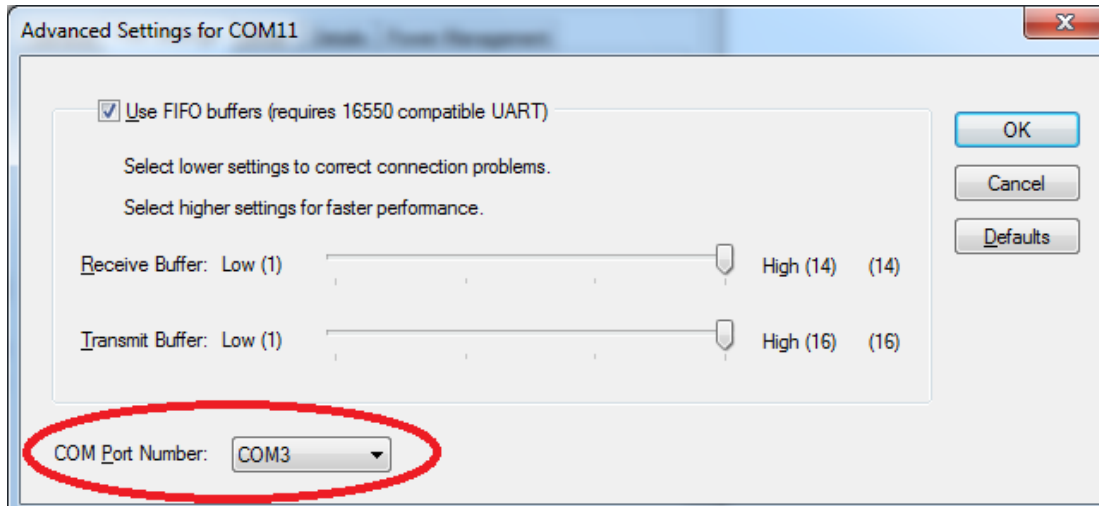
Caution: The COM port only can be selected up to COM9 due to configuration limit.



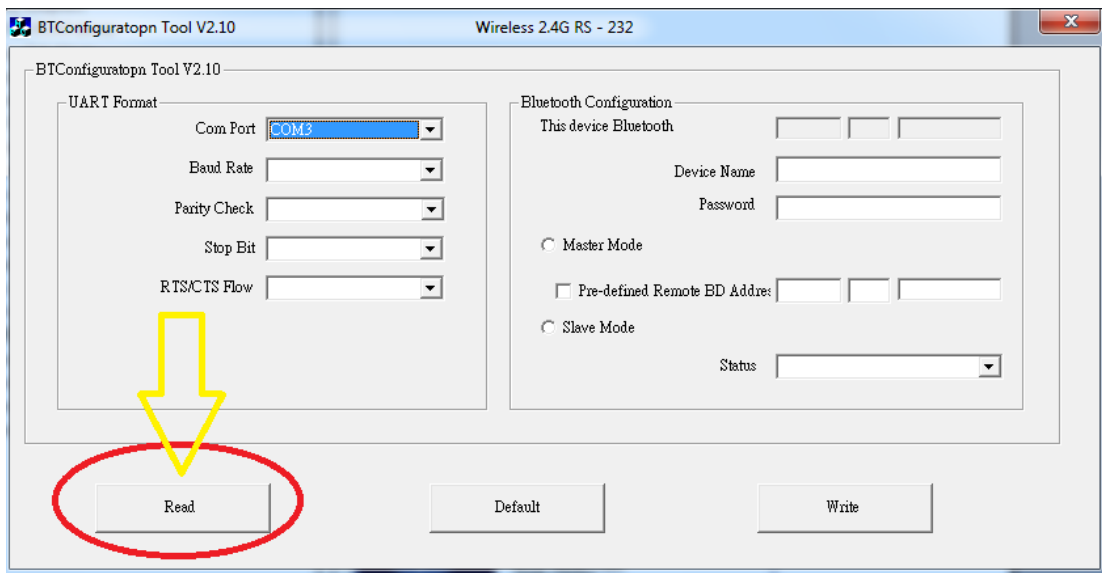
5.2 If the Bluetooth device does not list in COM1~COM9 from the Windows Device manager, you may click 'Advanced' of Port Settings to select applicable COM port.



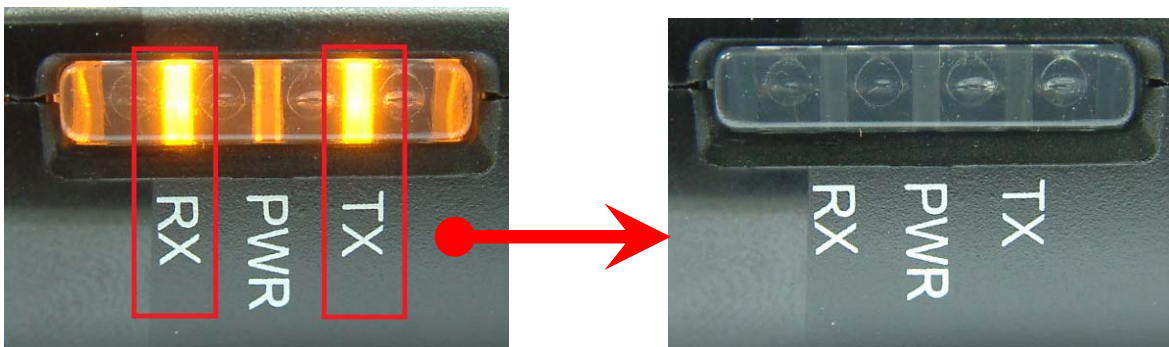
5.3 Confirm the COM Port Number is what you selected and click 'OK', then reboot the computer.

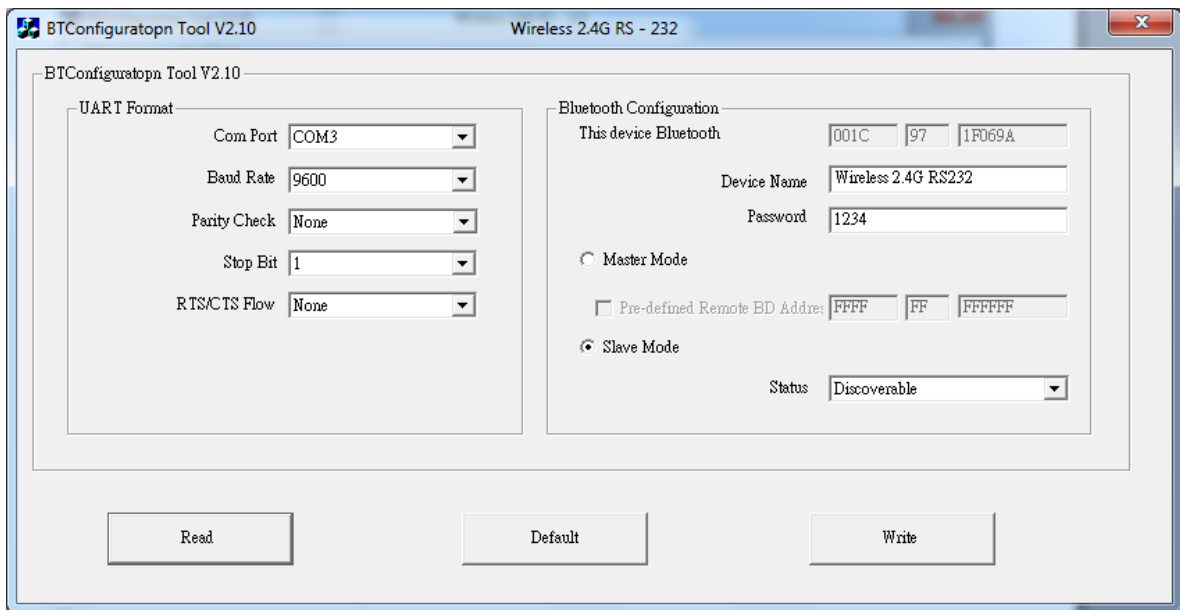


5.4 Back to the configuration wizard 'BTConfiguration Tool V2.10', and further check the default setting. You may click 'Read' and get the information of this device.



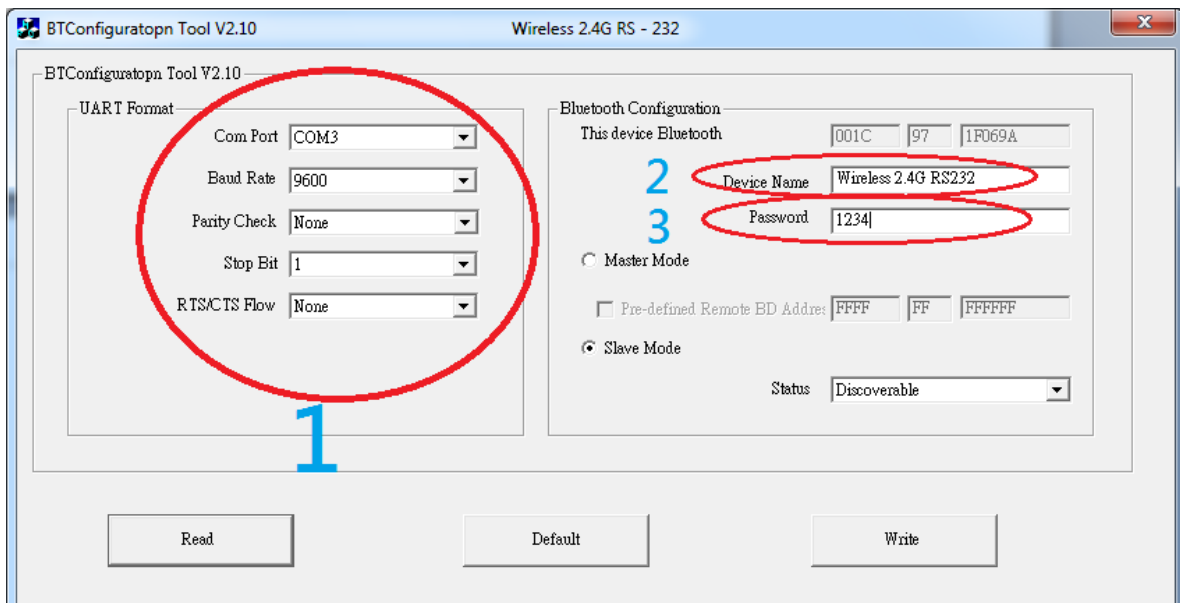
5.5 When the host computer is checking the default setting, the TX & RX LED indicators start blinking alternately in 10 seconds then light off.



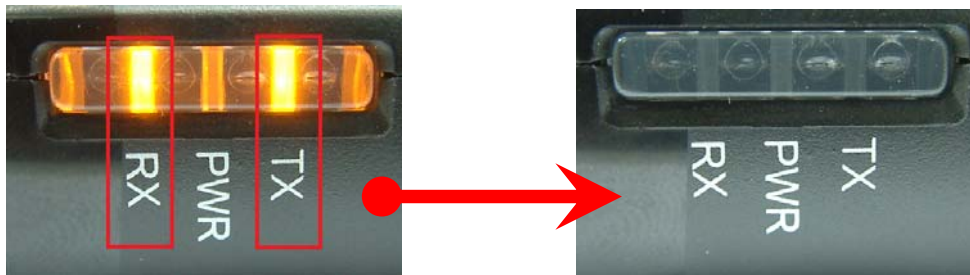
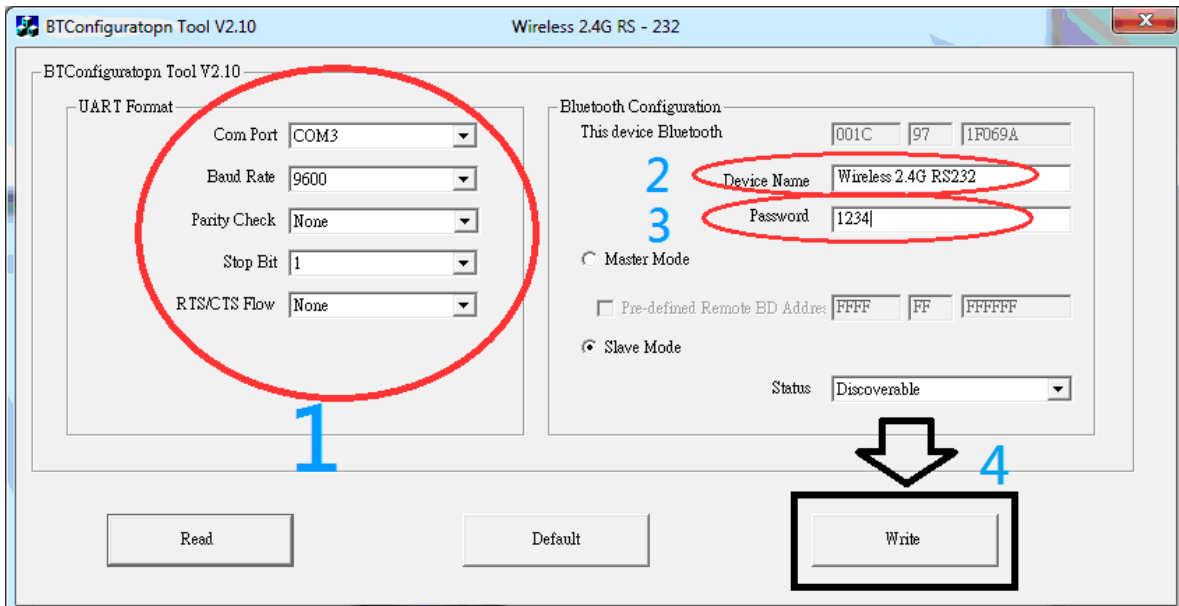


5.6 Complete your setting baud rate and Bluetooth Configuration as below. The default password is 1234. Or you may apply changes to any desired settings on Bluetooth device.

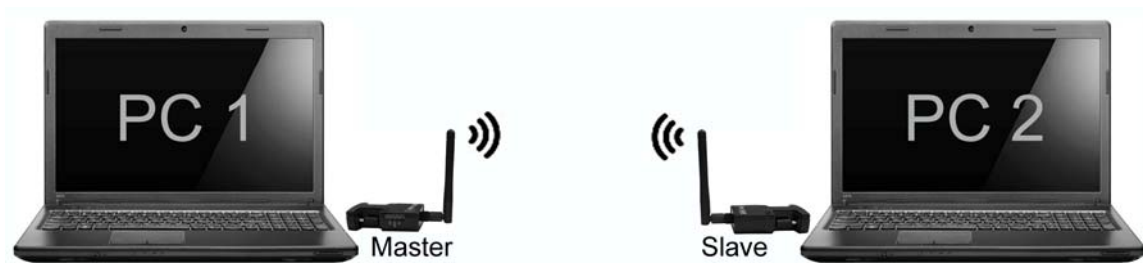
- (1) UART Format
- (2) Device Name
- (3) Password



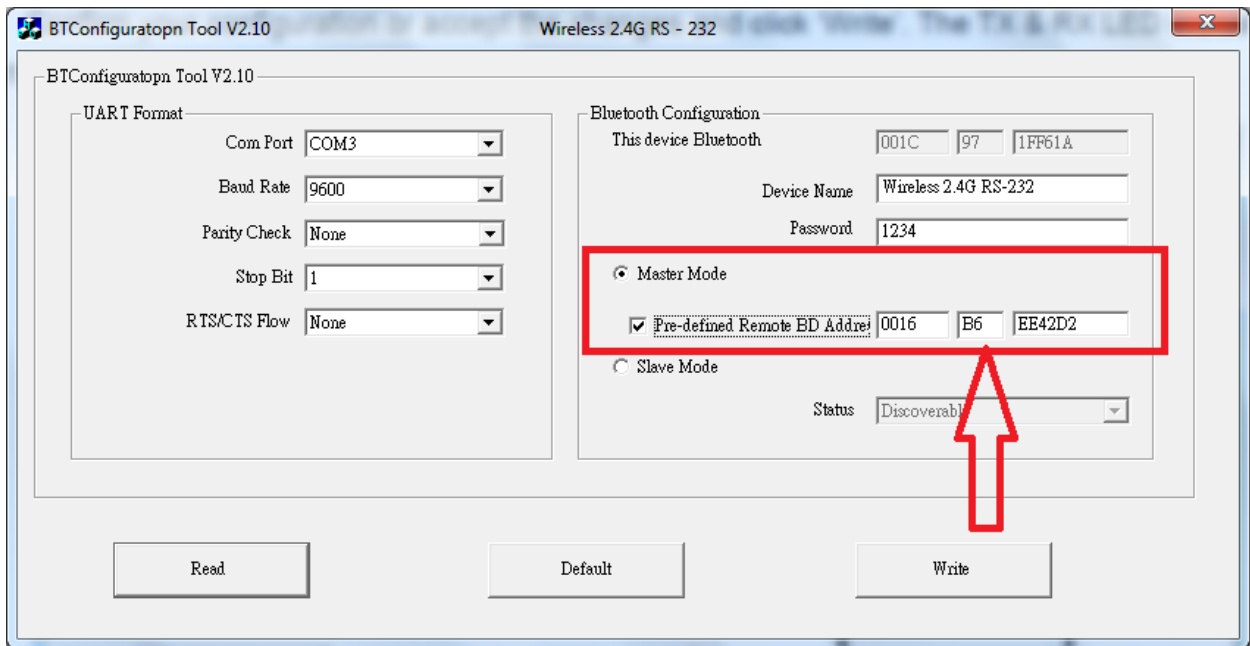
5.7 Confirm your configuration or accept the changes and click 'Write'. The TX & RX LED indicators start blinking alternately in 3~5 seconds and light off.



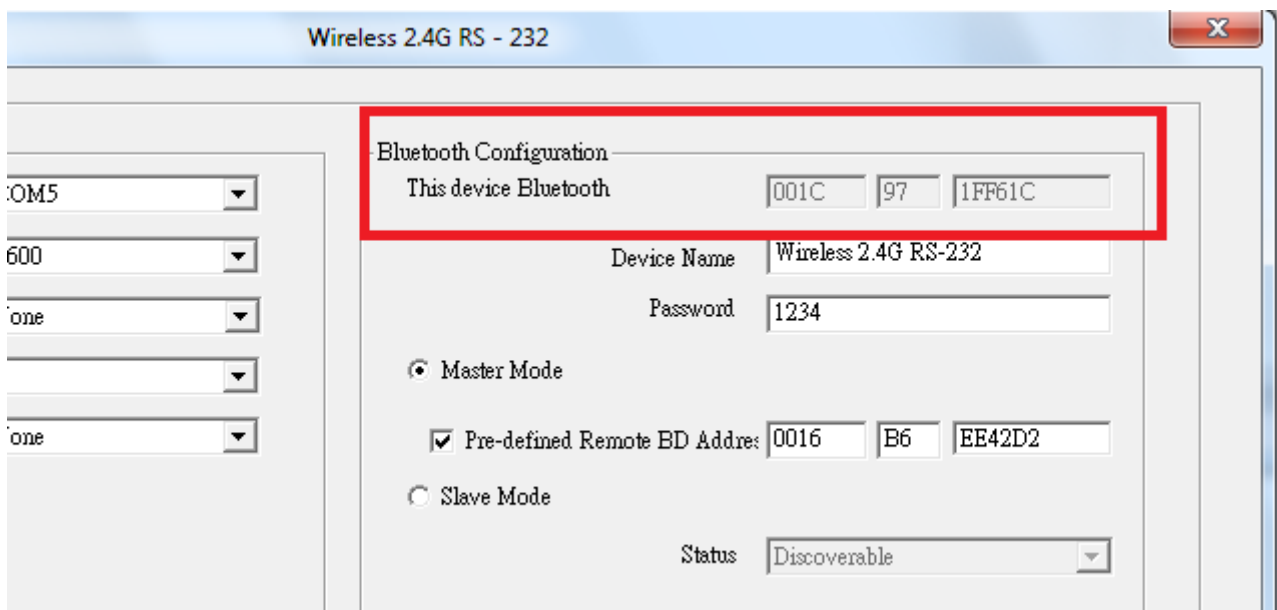
5.8 Pairing master & slave units
Typical application diagram



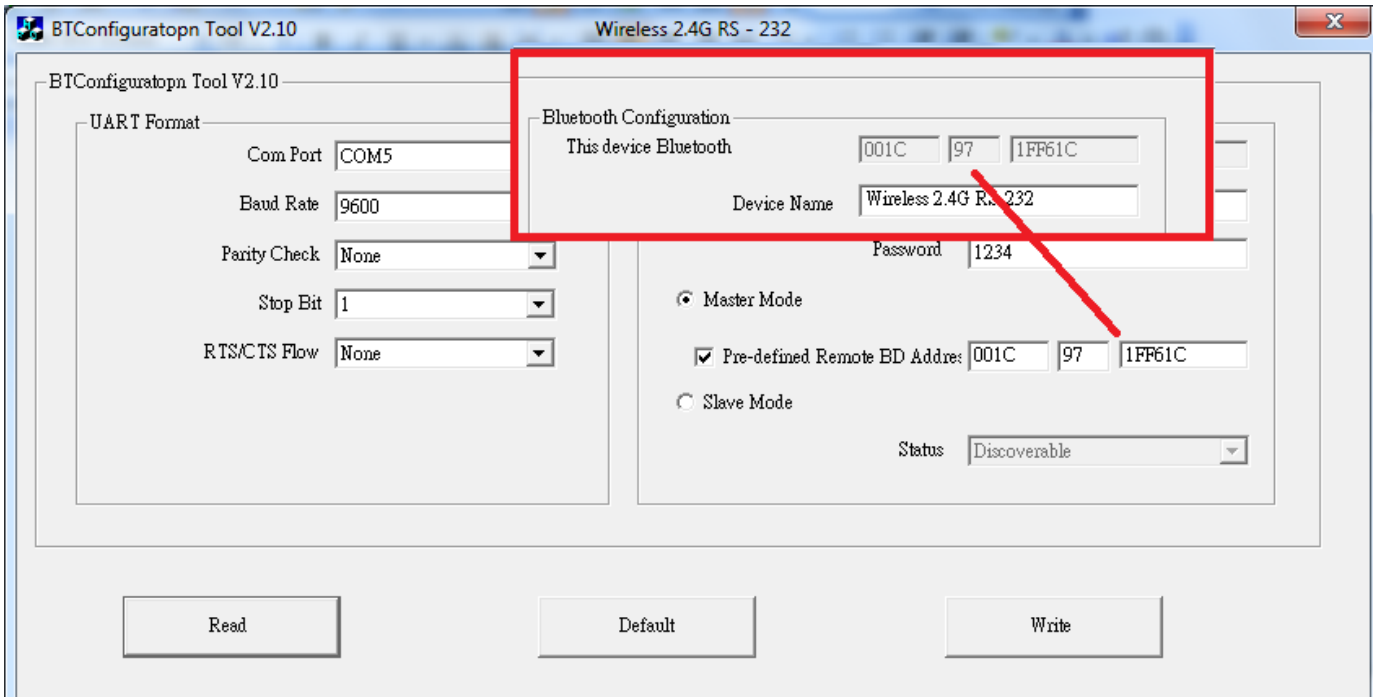
Two Bluetooth dongles can be paired by one is set as 'Master', another one is set as 'Slave'. And then it can transfer data thru the two Bluetooth dongles successfully.



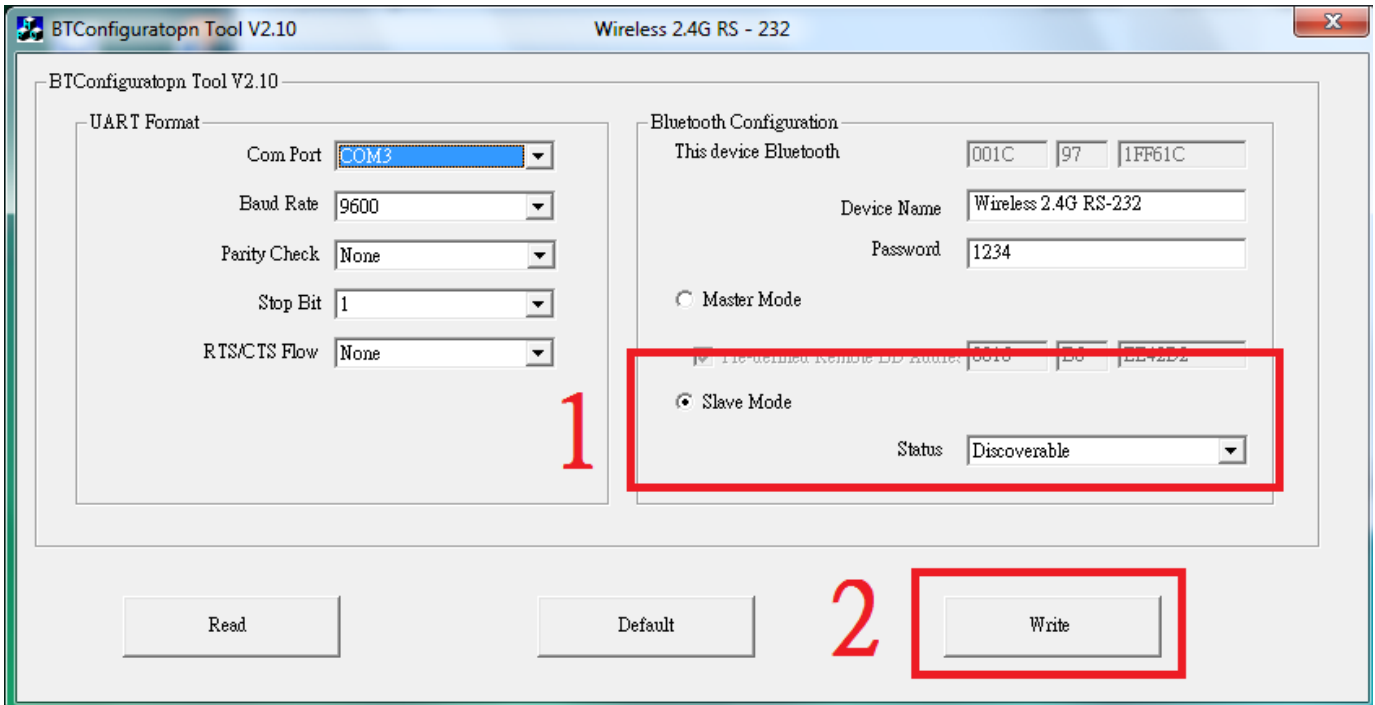
5.8.1 Check the Mac address of 'Slave' unit thru Bluetooth Configuration before setting the 'Master' unit. In this example, we get the Mac address of 'Slave' unit 001C.97.1FF61C.



5.8.2 Setting the 'Master' unit: Overwrite the Mac address 001C.97.1FF61C on the 3 columns behind 'Pre-defined Remote BD Address'. And then select the 'Master Mode'; tick off 'Pre-defined Remote BD Address' and click 'Write'.



5.8.3 Setting the 'Slave' unit: Check the Mac address of 'Slave' unit thru Bluetooth Configuration and select the 'Slave Mode'; then click 'Write'.



Note: When you finish above settings, the both power adapters of the two Bluetooth dongles must be removed, and then restart the two Bluetooth dongles.

6. Regulatory Compliance

Disclaimer

Information in this document is subject to change without notice. The manufacturer does not make any representations or warranties (implied or otherwise) regarding the accuracy and completeness of this document and shall in no event be liable for any loss of profit or any other commercial damage, including but not limited to special, incidental, consequential, or other damages.

No part of this document may be reproduced or transmitted in any form by any means, electronic or mechanical, including photocopying, recording or information recording and retrieval systems without the express written permission of the manufacturer.

All brand names and product names used in this document are trademarks, or registered trademarks of their respective holders.

CE Safety Statement

This equipment complies with the requirements relating to Electromagnetic Compatibility Standards EN55022/EN55024 and the further Standards cited therein. It must be used with shielded cables only. It has been manufactured under the scope of RoHS compliance.

FCC Statement

Federal Communication Commission Interference Statement

This equipment has been tested and found to comply with the limits for a Class B digital device, pursuant to Part 15 of the FCC Rules. These limits are designed to provide reasonable protection against harmful interference in a residential installation. This equipment generates uses and can radiate radio frequency energy and, if not installed and used in accordance with the instructions, may cause harmful interference to radio communications. However, there is no guarantee that interference will not occur in a particular installation. If this equipment does cause harmful interference to radio or television reception, which can be determined by turning the equipment off and on, the A user is encouraged to try to correct the interference by one of the following measures:

- *Reorient or relocate the receiving antenna.*
- *Increase the separation between the equipment and receiver.*
- *Connect the equipment into an outlet on a circuit different from that to which the receiver is connected.*

Consult the dealer or an experienced radio/TV technician for help.

FCC Compliance Statement

This equipment generates and uses radio frequency and may cause interference to radio and television reception if not installed and used properly. This equipment has been tested and found to comply with the limits of a Class B digital device, pursuant to part 15 of the FCC Rules. These limits are designed to provide reasonable protection against harmful interference in a residential installation.

You are cautioned that changes or modification not expressly approved by the party responsible for compliance could void your authority to operate the equipment.

This device complies with part 15 of the FCC Rules. Operation is subject to the following two conditions:

- (1) This device may not cause harmful interference, and*
- (2) This device must accept any interference received, including interference that may cause undesired operation*

Notice : The changes or modifications not expressly approved by the party responsible for compliance could void the user's authority to operate the equipment.

RF Exposure Statement

The equipment complies with FCC RF radiation exposure limits set forth for an uncontrolled environment. This device and its antenna must not be co-located or operation in conjunction with any other antenna or transmitter.



WEEE (Waste of Electrical and Electronic Equipment), Recycling of Electronic Products

In 2006 the European Union introduced regulations (WEEE) for the collection and recycling of all waste electrical and electronic equipment. It is no longer allowable to simply throw away electrical and electronic equipment. Instead, these products must enter the recycling process.

Each individual EU member state has implemented the WEEE regulations into national law in slightly different ways. Please follow your national law when you want to dispose of any electrical or electronic products. More details can be obtained from your national WEEE recycling agency.