

# PPT-120

## User's Manual

*Edition 1*

*For system integrators*



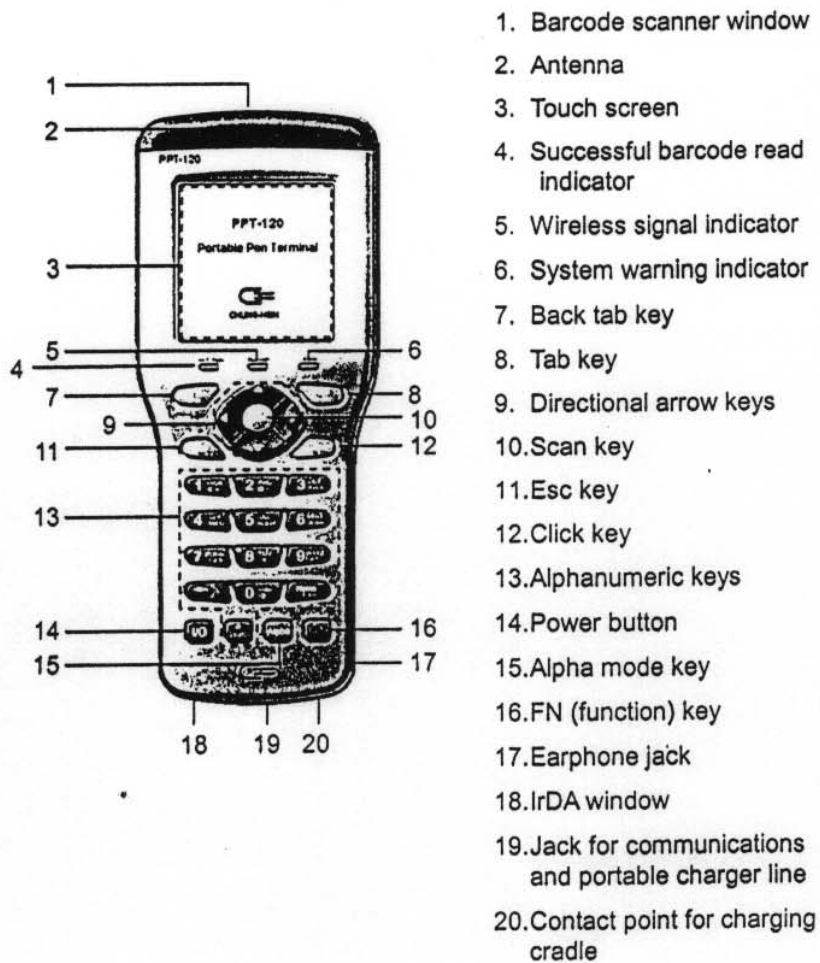
Chung-Hsin Electric & Machinery Mfg. Corp.

- Contents -

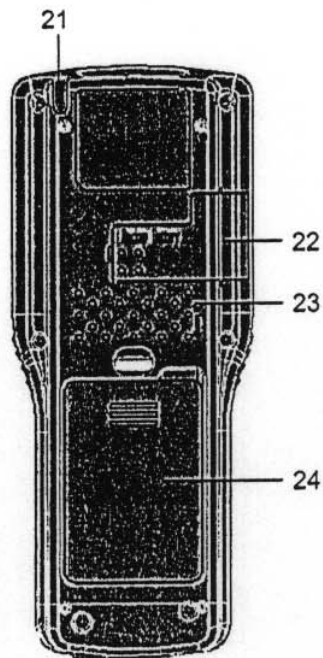
1. Hardware .....	1
1.1 Exterior (Face) .....	1
1.2 Exterior (Back) .....	2
1.3 Features .....	3
Table 1. Keypad key assignments .....	6
2. System set up .....	7
3. Battery .....	8
4. Use and care of the touch panel .....	9
5. Care of the terminal .....	9
6. System reset .....	10
7. Desktop .....	11
8. Establishing a network connection .....	11
9. Using the browser .....	14

## 1. Hardware

### 1.1 Exterior (Face)



## 1.2 Exterior (Back)



- 21. Stylus storage slot
- 22. Backup battery slot
- 23. System reset button
- 24. Main battery slot

## 1.3 Features

### 1. Barcode scanner window

Location of built-in 1D barcode scanner

### 2. Antenna

For wireless communications; antenna can be raised 90 degrees to a vertical position to enhance reception if necessary. However, in most environments signal will be strong enough without adjusting the antenna.

### 3. Touch screen

The 160 x 160 graphic dots, 16-gray scale, LCM touch screen provides data entry via the included stylus.

### 4. Successful barcode read indicator

Green LED is illuminated each time a barcode is successfully scanned.

### 5. Wireless signal indicator

The orange LED flashes continuously after a wireless connection has been made.

### 6. System warning indicator

This red LED can be programmed by the application designer as needed, to indicate the current system status.

### 7. Back tab key

Used to move focus to the previous object

### 8. Tab key

Used to move focus to the next object

### 9. Directional arrow keys

Used to move the cursor or to select items within an object, like within a list object

10. Scan key

- When the focus is on a single- or multi-line editor object, this key activates the laser scanning function.
- The scan key will not operate when the focus is on any other object.
- When the terminal is off, this button can be used to turn the unit on.

11. Esc key

Press this button to end the current application or action.

12. Click key

Press this button to execute the chosen application or action.

13. Alphanumeric keys

These keys are used to enter numbers and letters. Every key can be used together with the Alpha or FN key to allow a different mode of data entry (refer to Table 1).

14. Power button

- For turning the terminal on or off
- When terminal is on, press the key for three seconds to turn the backlight on or off

15. Alpha mode key

Press the Alpha key once to enter Alpha mode, indicated by the backlight. Now the keypad will function as shown in Table 1.

16. FN (function) key

Pressing this key alone will not produce any action. The key must be pressed and held while pressing another key at the same time. The resulting action is shown in Table 1. This key can be used in both the normal operating mode and the Alpha mode.

17. Earphone jack

Insert earphone in the jack to hear sounds emitted by the system during operation.

18. IrDA window

The IrDA interface can be used to transfer data to another PPT-120 terminal or a personal computer.

19. Jack for communications and portable charger line

- Allows the terminal to be linked to a PC for data transfer
- The communications line can also be used as a portable battery charger. For a further explanation, refer to section 3, "Battery".

20. Contact point for charging cradle

Where the terminal comes in contact with the (optional) charging cradle

21. Stylus storage slot

Holds the stylus when not in use

22. Backup battery slot

- Holds the system's backup battery. This battery preserves data in memory for several hours when main battery is out of power and cannot be used for system operations.
- The backup battery is rechargeable, getting its power from the main battery. When charging the main battery, the system also charges the backup battery.

23. System reset button

- When the system needs to be reset, unscrew the tool from the end of the stylus and insert into this opening to restart the terminal.
- For further information, refer to section 6, "System reset".

24. Main battery slot

Compartment for the terminal's main battery

Table 1. Keypad key assignments

Key	Normal mode	Alpha mode	While pressing FN key
1	Numeral " 1 "	Caps : Caps lock mode	Increases screen brightness
2	Numeral " 2 "	Rotates through letters A->B->C	Decreases screen brightness
3	Numeral " 3 "	Rotates through letters D->E->F	Displays system status
4	Numeral " 4 "	Rotates through letters G->H->I	Displays menu for various applications
5	Numeral " 5 "	Rotates through letters J->K->L	When entering letters, shows a small keypad on screen
6	Numeral " 6 "	Rotates through letters M->N->O	Calculator application
7	Numeral " 7 "	Rotates through letters P->Q->R->S	Hot key F1: can be programmed, except on desktop where key switches between time and date
8	Numeral " 8 "	Rotates through letters T->U->V	" * " symbol
9	Numeral " 9 "	Rotates through letters W->X->Y->Z	Hot key F2: can be programmed, except on desktop where key displays group menu
0	Numeral " 0 "	Space key	" @ " symbol
←	* Backspace	" \ " symbol	" / " symbol
Home	Ends current application and returns to desktop	" : " symbol	Return key
•	" • " symbol	No action	Global search



## 2. System set up

Before you begin to use the terminal, first perform the following steps:

- Charge the battery

Before using, first charge the battery for 8 hours in order to preserve battery life. Read section 3 "Battery" for further explanation about use of the battery.

- Format NAND Flash

After the battery is installed and the terminal is on, the question "Format NAND Flash?" will appear on the screen. This terminal has already been formatted by the manufacturer, and the NAND Flash may already contain software from the system integrator. So, press any key except the down directional arrow to cancel formatting. Otherwise, all data in the NAND Flash will be erased.

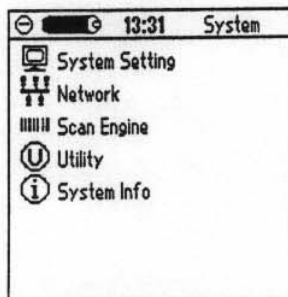
**\*\*If nothing appears on the screen after turning on the terminal, reset the unit using the tool on the end of the stylus.**

- Touch screen initialization

Next, a "+" symbol appears in the upper left corner of the display. Use the stylus to tap the center of the "+" character. Then, the "+" will appear in lower right corner and center of the screen. Tap the "+" as it appears to complete the initialization process.

- Setting the time

After initializing the display, the terminal will enter the main interface where you must first set the time. Enter the "System Group" by simultaneously pressing the FN + Tab and Back Tab keys. A menu like the one on the right will appear. Enter "System Setting" and choose "General". After completing "Set Time" and "Set Date", press "Home" to return to the main interface.



After completing the above steps, you can begin to use the terminal.

### 3. Battery

The battery is a precision electronic product. Please use in the proper manner to extend its life and preserve the continuity of data stored in the terminal.

When shipped from the factory, the battery contains a minimal amount of power. Before using for the first time, charge the battery for a minimum of 8 hours. An icon on the terminal's desktop displays the amount of remaining battery power. When the battery is almost completely drained, the system will display a message that power is nearly depleted. If the battery cannot be recharged before completely losing all power, data stored in the terminal could be lost. In order to protect data on the terminal, try to charge the unit as soon as seeing the low power warning. As the battery used is a Lithium ion type, it can also be charged when power is moderately low without harming the battery.

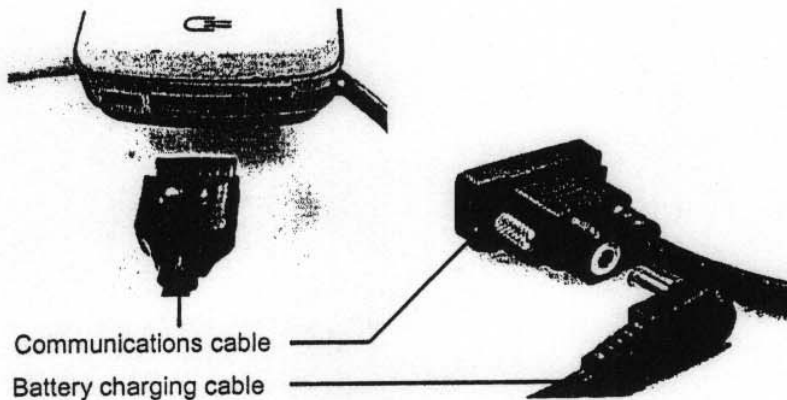
The battery charger's status can be determined by its LEDs.

Red: charging in progress

Green: charging complete

Note: Please use the specialized charger for this terminal to avoid damage to the unit.

The charger is connected as shown here:



#### 4. Use and care of the touch panel

In order to maintain the quality and functioning of the terminal's touch screen, please carefully read the following:

- Do not place any objects on the screen.
- Use only the provided stylus with this screen. Do not use your finger or any other pointed objects.
- Wipe the screen with a smooth, clean, anti-static cloth. Mild household cleaner or water can also be used if needed. Do not use alcohol or other industrial strength cleaning fluids.

**Note:** Do not pour water directly onto the screen. Cleaning should be done only with a damp cloth, in order to avoid damaging the terminal.

#### 5. Care of the terminal

When using the terminal, take note of the following:

- The terminal is a precision electronic device. Avoid exposing the terminal to the following conditions:
  1. Electrostatic environments
  2. Extremely hot or cold temperatures
  3. Overly humid environments
  4. Quickly changing temperatures
  5. Extremely dusty environments
- Do not disassemble the terminal in order to avoid damaging the device.
- Avoid pouring any liquids on the terminal.

## 6. System reset

In the event an application hangs or there is no response from the system, the system reset function can return the terminal to normal operating state.

This terminal features two types of reset:

- Warm reset

Unscrew the reset tool found on the end of the stylus and press the reset button found on the back of the terminal. This action will not delete any data stored within the device.

- Cold reset

When doing a cold reset, all data stored in the RAM will be deleted, and the terminal will be restored to its original state when delivered from the manufacturer. Also, data stored in the NAND Flash will ask whether formatting is necessary. Thus it is best to avoid the cold reset if possible. It is recommended to save a copy of all data before performing the reset, as well as to backup data regularly.

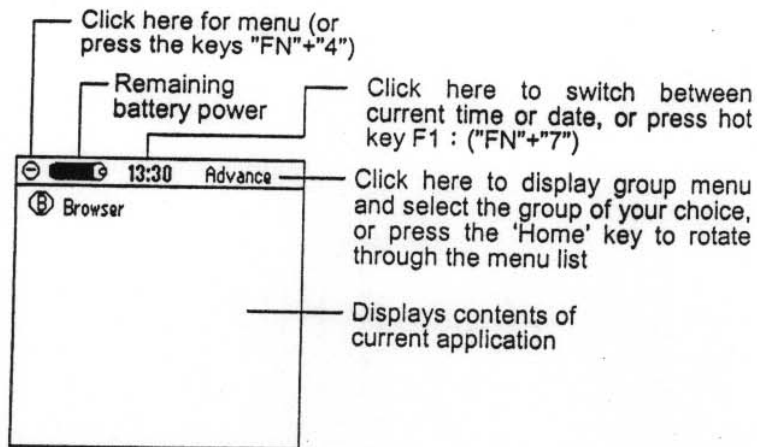
The reset is done as follows:

1. Press and hold the 'down' arrow key.
2. Using the tool from the stylus, press and release the reset button on the back of the terminal.
3. Wait for a message to appear on the display before releasing the 'down' arrow key.
4. As instructed, press the 'right' arrow key to begin the cold reset. Or press the 'left' arrow key to cancel the operation and instead do a warm reset.
5. Begin to format NAND Flash as indicated (or choose to not format NAND Flash if not necessary).
6. Then, follow the steps for initializing the touch screen.

After performing the above steps, the cold reset is complete and the terminal is returned to its original factory-direct state.

## 7. Desktop

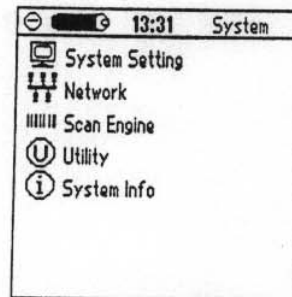
After the terminal is turned on, the main system interface, or desktop, appears. The desktop shows the following information:



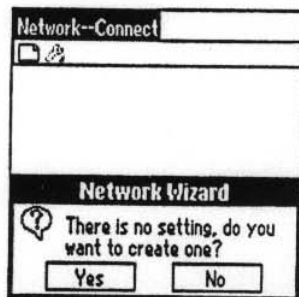
## 8. Establishing a network connection

This terminal features a built-in Bluetooth wireless connection. Before using related network software, establish a network connection by following the below steps.

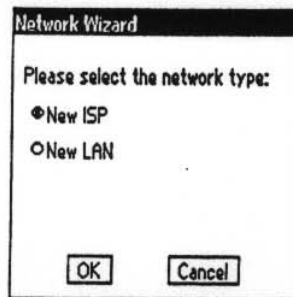
1. Enter the system group by simultaneously pressing the 'FN' + 'Tab' + 'Back Tab' keys and the image to the right will appear. Then, select 'Network'.



2. The first time you make a connection, image A will appear, asking to create settings for the network. Select 'Yes'.
3. Next, as seen in image B, select 'New ISP' and click 'OK'.

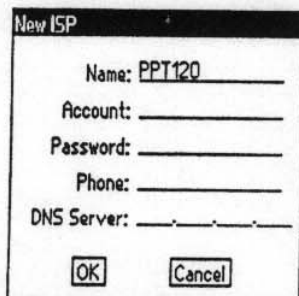


(A)

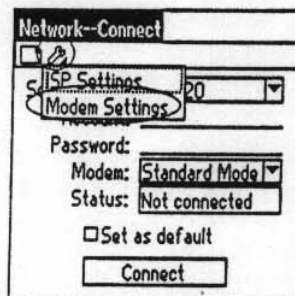


(B)

4. As shown in image C, enter a name to identify the connection and click 'OK'.
5. In the next view (image D), click the tool icon in the upper left corner to display the menu shown below. Select 'Modem Settings'.

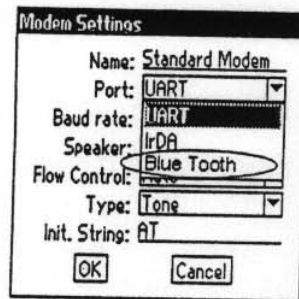


(C)

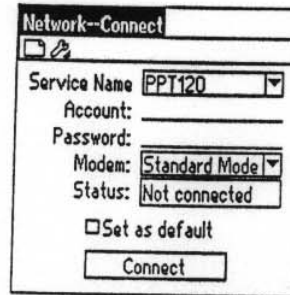


(D)

6. Then, image E will appear. Choose 'Blue Tooth' in the 'Port' menu and click 'OK'.
7. Now, the initial connection settings have been defined. The next time entering the network application, these steps will not need to be repeated.
8. Select 'Connect' (image F) to begin the connection process.



(E)

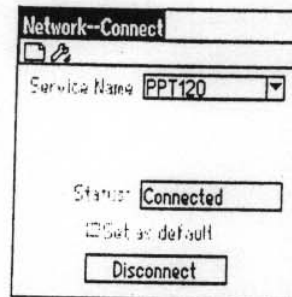


(F)

9. In the next view, press the 'FIND' key to search for an available access point.
10. After the search is finished, the menu that appears in the center of the screen will show all Bluetooth addresses found. Choose the address of the AP to be used.
11. Choose 'Select' to make the connection.

12. Now, the network connection has been established (image G). To end the connection, click 'Disconnect'.

After completing the above steps, press 'Home' to return to the desktop and continue to use other related applications.



(G)

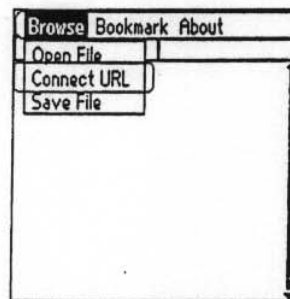
## 9. Using the browser

This terminal features a built-in browser application which can be used to send data to a server in real time. The browser functions as follows:

1. Before starting the browser, first establish a network connection.
2. Enter the 'Advance' group and execute the browser application.
3. Click the word in reverse type at the top of the menu bar (image A) or press the 'Menu' hot key ('FN' + '4') to call the menu.
4. Select 'Connect URL' under 'Browse' in the menu bar (Image B).

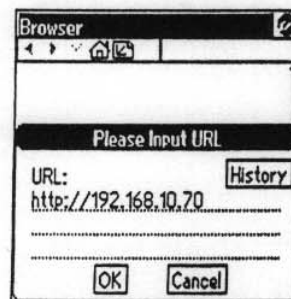


(A)



(B)

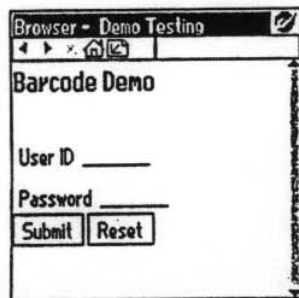
5. The view shown in image C appears. Enter the URL of the desired website and click 'OK'. The URL can also be chosen from the 'History', which stores all previously entered URLs.



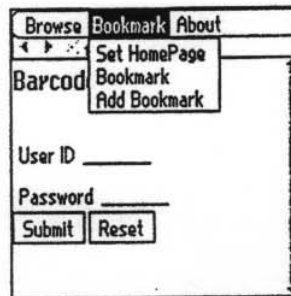
(C)



6. Next, the data from the URL address will appear on the browser (image E).
7. The URL currently being viewed can be set as the home page or added as a bookmark by choosing 'Set HomePage' or 'Add Bookmark' from 'Bookmark' in the menu bar. (image F).



(E)



(F)

The browser only supports text-based web pages, and the page must match the terminal's resolution for optimum viewing.

### Note :

This device complies with part 15 of FCC Rules. Operation is subject to the following two conditions:

- (1) This device may not cause harmful interference, and
- (2) This device must accept any interference received, including interference that may cause undesired operation.

The FCC require the user to be notified that any changes or modification made to this device that are not expressly approved by **Chung-Hsin Electric & Machinery Mfg. Corp.** may avoid the user's authority to operate the equipment.

To comply with FCC RF exposure requirement, this device and its antenna must not be co-located or operating in conjunction with any other antenna or transmitter.