



Harbor Breeze® is a registered trademark of LF, LLC. All rights reserved.

ATTACH YOUR RECEIPT HERE

Serial Number _____

Purchase Date _____

Questions? Call our customer service department at 1-800-643-0067, 8 a.m. - 5 p.m., EST, Friday.

SAFETY INFORMATION

Read instructions completely before installing wall control.

CAUTION: Do not install in damp locations. For indoor use only.

CAUTION: Do not use with fans that have integrated remote controls.

CAUTION: Be sure the outlet box is properly grounded or that a green or bare (ground) wire is present.

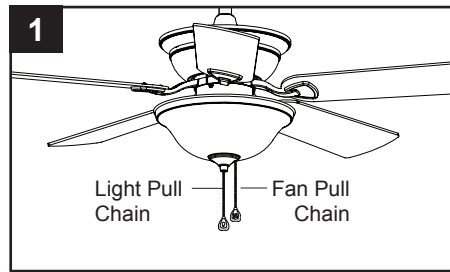
CAUTION: This unit is intended to control a ceiling fan with electrical source of AC 110/120V, 60Hz.

CAUTION: This device complies with Part 15 of the FCC Rules. Operation is subject to the following two conditions: (1) this device may not cause interference, and (2) this device must accept any interference received, including interference that may cause undesired operation.

WARNING: If the color of the household supply wires is different than what is referred to in the instructions below, a professional electrician should determine proper wiring.

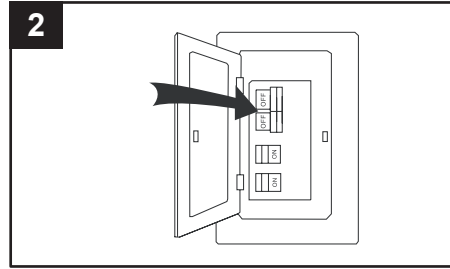
ASSEMBLY INSTRUCTIONS

1. Use pull chains to set fan speed to high and light on.

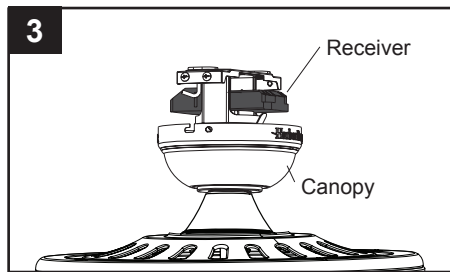


2. Turn off circuit breakers and wall switch to the fan.

DANGER: Failure to disconnect power supply prior to installation may result in serious injury or death.

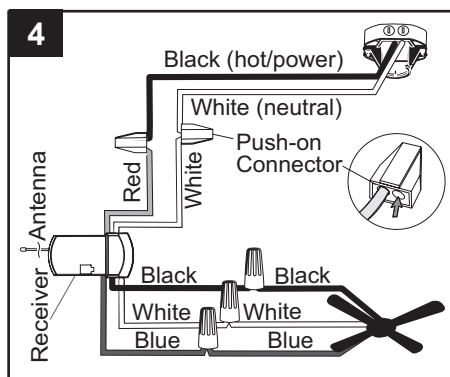


3. Lower the canopy of the previously assembled fan and insert receiver. **Note:** If installing the remote in a new fan, insert the receiver in the mounting bracket before wiring the fan. Wire the fan according to these instructions. Then, continue fan assembly as directed in the fan's instruction manual.

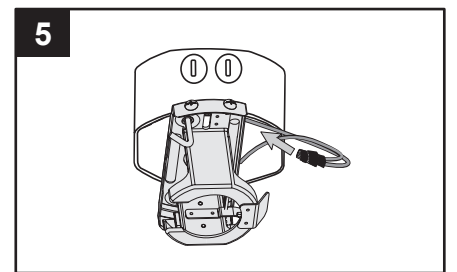


4. Secure all wiring connections with wire connectors according to diagram and these steps:

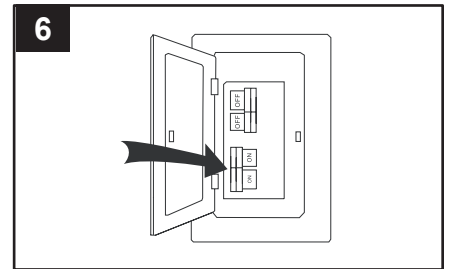
- Connect the Blue wire with white label from the receiver to the Blue fan wire.
- Connect the Black wire with white label from the receiver to the Black fan wire.
- Connect the White wire with white label from the receiver to the White fan wire.
- Connect the Red wire with red label from the receiver to the Black (hot/power) supply wire.
- Connect the White wire with red label from the receiver to the White (neutral) supply wire.



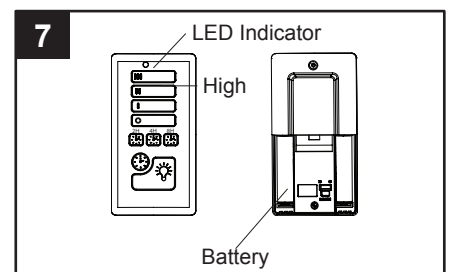
5. Wrap electrical tape (not included) around each push-on connector down to the wire. Then, push wire connections into the outlet box. Place the Green and White wire connections on the opposite side of the outlet box from the Black and Blue wire connections.



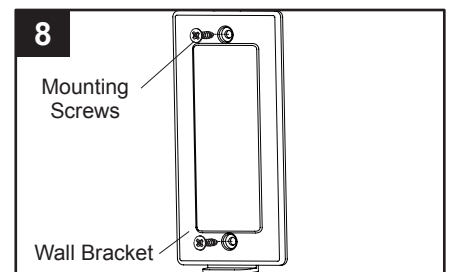
6. Turn on power supply and wall switch to the fan.



7. Remove the battery cover from the back of the remote and install two AAA batteries. Replace the battery cover and press the high button to ensure the LED indicator illuminates and the fan turns on.



8. If desired, the wall bracket can be attached to a wall using the mounting screws from the hardware bag. Slide small plate over mounting screws, then rest the remote in the wall bracket for easy storage.



OPERATING INSTRUCTIONS

1. To operate the fan using the remote, press and release the following buttons:

High - Turns fan on high speed.

Medium - Turns fan on medium speed.

Low - Turns fan on low speed.

Fan Off - Turns fan off.

Walk Away Light Delay™ - Tap once will turn fan light off after 1 minute. **Note:** Light blinks to confirm that Walk Away Light Delay is active. Press any other button to cancel.

Timer - With fan on, press desired timer button (2, 4 or 8 hour). Fan light (if applicable) blinks to confirm timer is active. Press fan off to cancel timer.

Home Shield™ - Press and hold Light and Delay buttons for 3 seconds. Lights cycle on for 5-20 minutes and off for 60 minutes, simulating occupancy. Cycle repeats continuously until any other button is pushed to discontinue Home Shield mode.

Light Control - Light Control:

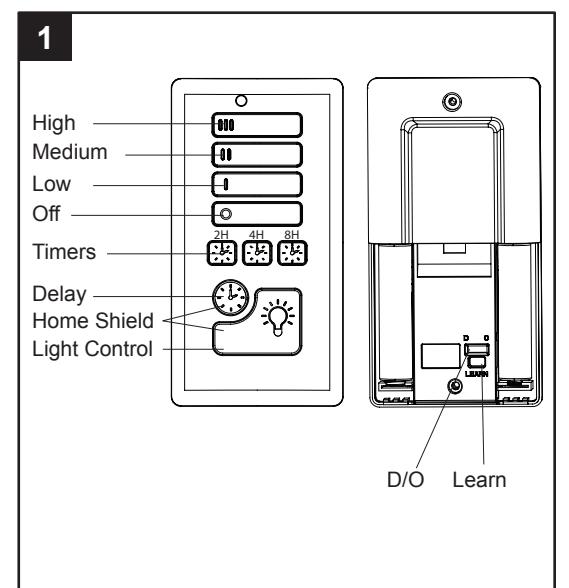
Incandescent Bulbs - Press light control to turn lights off and on. Press and hold light control to dim or brighten the lights.

CFL - Turns the lights on and off. Note: The dimmer function does not work with CFL bulbs.

D/O - Switch should be set to "O" to for CFLs, which disables the dimming function. Flip to "D" for incandescent and other dimmable bulbs.

Learn - Syncs remote control to receiver. The remote was synced at the factory. Should it become necessary to re-sync the remote. Turn off the main power, then turn it back on. Within 30 seconds, use a small screwdriver to press and hold the learn button on the remote for 3 seconds. The fan will turn on and light (if applicable) will blink three times, signaling a successful synchronization.

XXXXXXX

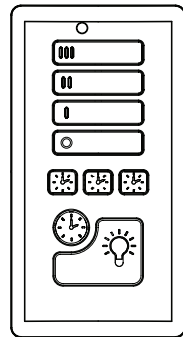


Model : TR121B

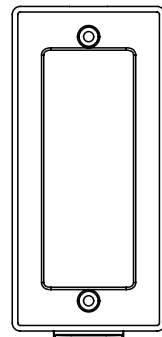
ITEM #0745359

REMOTE WITH TIMER

MODEL #41235



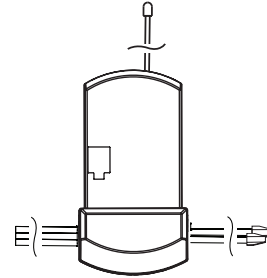
Remote Qty. 1



Wall Bracket Qty. 1



Battery Qty. 2



Receiver Qty. 1



Wire Connector Qty. 3



Mounting Screw Qty. 2

CAUTION:

To assure continued FCC compliance:

FCC ID : KUJCE10410

This device complies with Part 15 of the FCC Rules. Operation is subject to the following two conditions: (1) This device may not cause harmful interference, and (2) this device must accept any interference received, including interference that may cause undesired operation.

Any changes or modifications not expressly approved by the grantee of this device could void the user's authority to operate the equipment.