

# DC POWER CEILING FAN REMOTE CONTROL MANUAL

## LEARNING PROCESS

**NOTE :** The Hand Held Remote Control System is equipped with a learning frequency function which has code combinations to prevent potential interference from other remote units

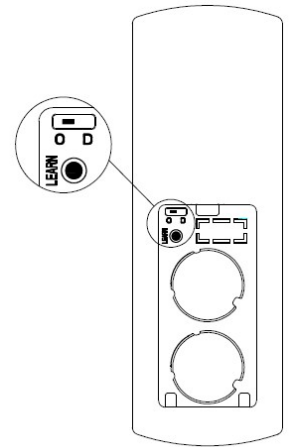
**Step: 1** Open the remote battery cover and install DC3V,CR2032 2pcs batteries

**Step: 2** Within 30 seconds of turning the Receivers AC power ON.


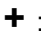

**Step: 3** Press and hold remote "LEARN" key for over 5 seconds, once the receiver has detected the frequency, the receiver will make sound, Bi Bi, twice. This will indicate the receiver has learned the frequency that was previously selected on the transmitter.

**NOTE:** After the AC power is on, do not press any other button on the transmitter before setting learning. Doing so will cause the procedure to fail. After completing the steps above, you should be able to operate the ceiling fan and light. If the fan is not responding to the transmitter, please turn the power off to the receiver. And repeat step 1 and 2.

**NOTE:** Remove the battery if not used for long periods of time to prevent damage to the hand held remote.



## FUNCTIONS OF TRANSMITTER

1.  : To turn the fan on or off.
2.  : Press this button to increasing fan speed and LED indicator would be on the position of fan speed. (1~6 speed)
3.  : Press this button to decreasing fan speed and LED indicator would be on the position of fan speed.(1~6 speed)



### 4. FAN TIMER:


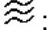

2hr: Setting up that the ceiling fan will turn off after 2 hours automatically.

4hr: Setting up that the ceiling fan will turn off after 4 hours automatically.

8hr: Setting up that the ceiling fan will turn off after 8 hours automatically.

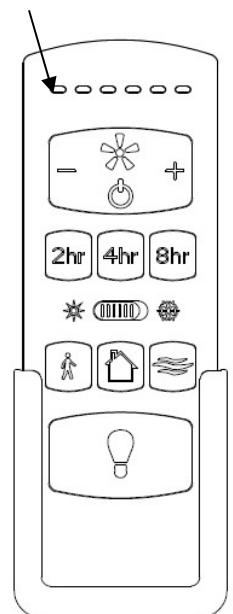
Press fan speed button to deactivate

5.  : To set fan wind direction up or down.
6.  : Tap once to activate. Light on ceiling fan blinks once to confirm Walk Away Delay is active. The light turns off after 1 minute. Press any key to cancel function.

7.  : Home Shield--Press and hold button to activate. Light on ceiling fan blinks two times to confirm Home Shield is active. Fan remains off and the light randomly turns on for a minimum of 5 minutes and a maximum of 20 minutes. The light remains off for 60 minutes between events. To deactivate press any button once
8.  : "NATURAL FLOW", press the button for set fan speed change automatically. If fan speed is on 1<sup>st</sup>, 2<sup>nd</sup>, or 3<sup>rd</sup>, press this button for low fan speed changing automatically. If fan speed is on 4<sup>th</sup>, 5<sup>th</sup>, or 6<sup>th</sup>, press this button for high fan speed changing automatically. Press Fan Speed to deactivate.
9.  : To turn on and turn off the light.

10. When pressing remote button, the LED indicator on position 1 would be on. If you press remote button and LED indicator would not be on, you should change new DC3V,CR2032 2pcs batteries.

### LED indicator speed position



TR292A

**To assure continued FCC compliance:**

**FEDERAL COMMUNICATIONS COMMISSION INTERFERENCE STATEMENT**

This equipment has been tested and found to comply with the limits for a Class B digital device, pursuant to Part 15 of the FCC Rules. These limits are designed to provide reasonable protection against harmful interference in a residential installation. This equipment generates, uses and can radiate radio frequency energy and, if not installed and used in accordance with the instructions, may cause harmful interference to radio communications. However, there is no guarantee that interference will not occur in a particular installation. If this equipment does cause harmful interference to radio or television reception, which can be determined by turning the equipment off and on, the user is encouraged to try to correct the interference by one or more of the following measures:

--Reorient or relocate the receiving antenna. --Increase the separation between the equipment and receiver.  
--Connect the equipment into an outlet on a circuit different from that to which the receiver is connected. --Consult the dealer or an experienced radio/TV technician for help.

**CAUTION:**

**To assure continued FCC compliance:**

Any changes or modifications not expressly approved by the grantee of this device could void the user's authority to operate the equipment.

**FCC ID : KUJCE10612**

This device complies with Part 15 of the FCC Rules. Operation is subject to the following two conditions: (1) This device may not cause harmful interference, and (2) this device must accept any interference received, including interference that may cause undesired operation.