

Dual-Band Wireless A+B Network PCI Adapter



Use this guide to install: **WMP51AB**

INDUSTRY CANADA (CANADA)

This Class B digital apparatus complies with Canadian ICES-003.

Cet appareil numérique de la classe B est conforme à la norme NMB-003 du Canada.

The use of this device in a system operating either partially or completely outdoors may require the user to obtain a license for the system according to the Canadian regulations.

EC DECLARATION OF CONFORMITY (EUROPE)

Linksys Group declares that the Instant Wireless Series products included in the Instant Wireless Series conform to the specifications listed below, following the provisions of the EMC Directive 89/336/EEC and Low Voltage Directive 73/23/EEC:

- ETS 300-826, 301 489-1 General EMC requirements for Radio equipment.
- EN 609 50 Safety
- ETS 300-328-2 Technical requirements for Radio equipment.

Note: This equipment is intended to be used in all EU and EFTA countries. Outdoor use may be restricted to certain frequencies and/or may require a license for operation. For more details, contact Linksys Corporate Compliance.

Note: Combinations of power levels and antennas resulting in a radiated power level of above 100 mW are considered as not compliant with the above mentioned directive and are not allowed for use within the European community and countries that have adopted the European R&TTE directive 1999/5/EC and/or the CEPT recommendation Rec 70.03. For more details on legal combinations of power levels and antennas, contact Linksys Corporate Compliance.

- Linksys Group vakuuttaa täten että Instant Wireless IEEE 802.11 PC Card tyypin laite on direktiivin 1999/5/EY, direktiivin 89/336/EEC ja direktiivin 73/23/EEC oleellisten vaatimusten ja sitä koskevien näiden direktiivien muiden ehtojen mukainen.
- Linksys Group déclare que la carte PC Instant Wireless IEEE 802.11 est conforme aux conditions essentielles et aux dispositions relatives à la directive 1999/5/EC, la directive 89/336/EEC, et à la directive 73/23/EEC.
- Belgique B L' utilisation en extérieur est autorisé sur le canal 11 (2462 MHz), 12 (2467 MHz), et 13 (2472 MHz).

Dans le cas d' une utilisation privée, à l' extérieur d un bâtiment, au-dessus d un espace public, aucun enregistrement n' est nécessaire pour une distance de moins de 300m. Pour une distance supérieure à 300m un enregistrement auprès de l' IBPT est requise. Pour une utilisation publique à l' extérieur de bâtiments, une licence de l' IBPT est requise. Pour les enregistrements et licences, veuillez contacter l' IBPT.

• France F: Bande de fréquence restreinte: seuls les canaux 10, 11, 12, 13 (2457, 2462, 2467, et 2472 MHz respectivement) doivent être utilisés en France. Toute utilisation, qu'elle soit intérieure ou extérieure, est soumise à autorisation. Vous pouvez contacter l'Autorité de Régulation des Télécommunications (<http://www.art-telecom.fr>) pour la procédure à suivre.

• France F: Restricted frequency band: only channels 10, 11, 12, 13 (2457, 2462, 2467, and 2472 MHz respectively) may be used in France. License required for every indoor and outdoor installations. Please contact ART for procedure to follow.

• Deutschland D: Anmeldung im Outdoor-Bereich notwendig, aber nicht genehmigungspflichtig. Bitte mit Händler die Vorgehensweise abstimmen.

• Germany D: License required for outdoor installations. Check with reseller for procedure to follow.

• Italia I: E' necessaria la concessione ministeriale anche per l'uso interno. Verificare con i rivenditori la procedura da seguire. L'uso per installazione in esterni non e' permesso.

• Italy I: License required for indoor use. Use with outdoor installations not allowed.

• the Netherlands NL License required for outdoor installations. Check with reseller for procedure to follow.

• Nederlands NL Licentie verplicht voor gebruik met buitenantennes. Neem contact op met verkoper voor juiste procedure.

COPYRIGHT & TRADEMARKS

Copyright ©2002 Linksys, All Rights Reserved. Instant Wireless, Linksys, and the Linksys logo are registered trademarks of Linksys Group, Inc. Microsoft, Windows, and the Windows logo are registered trademarks of Microsoft Corporation. All other trademarks and brand names are the property of their respective proprietors.

LIMITED WARRANTY

Linksys guarantees that every Instant Wireless Dual-Band Wireless A+B Notebook Adapter will be free from physical defects in material and workmanship under normal use for one year from the date of purchase, when used within the limits set forth in the Specifications chapter of this User Guide. If these products prove defective during this warranty period, call Linksys Technical Support in order to obtain a Return Authorization Number. **BE SURE TO HAVE YOUR PROOF OF PURCHASE AND A BARCODE FROM THE PRODUCT'S PACKAGING ON HAND WHEN CALLING. RETURN REQUESTS CANNOT BE PROCESSED WITHOUT PROOF OF PURCHASE.** When returning a product, mark the Return Authorization Number clearly on the outside of the package and include a copy of your original proof of purchase. All customers located outside of the United States of America and Canada shall be held responsible for shipping and handling charges.

IN NO EVENT SHALL LINKSYS' S LIABILITY EXCEED THE PRICE PAID FOR THE PRODUCT FROM DIRECT, INDIRECT, SPECIAL, INCIDENTAL, OR CONSEQUENTIAL DAMAGES RESULTING FROM THE USE OF THE PRODUCT, ITS ACCOMPANYING SOFTWARE, OR ITS DOCUMENTATION. LINKSYS DOES NOT OFFER REFUNDS FOR ANY PRODUCT. Linksys makes no warranty or representation, expressed, implied, or statutory, with respect to its products or the contents or use of this documentation and all accompanying software, and specifically disclaims its quality, performance, merchantability, or fitness for any particular purpose.

Linksys reserves the right to revise or update its products, software, or documentation without obligation to notify any individual or entity. Please direct all inquiries to:

Linksys P.O. Box 18558, Irvine, CA 92623.

FCC STATEMENT

This Instant Wireless Dual-Band Wireless A+B Notebook Adapter has been tested and complies with the specifications for a Class B digital device, pursuant to Part 15 of the FCC Rules.

These limits are designed to provide reasonable protection against harmful interference in a residential installation. This equipment generates, uses, and can radiate radio frequency energy and, if not installed and used according to the instructions, may cause harmful interference to radio communications. However, there is no guarantee that interference will not occur in a particular installation. If this equipment does cause harmful interference to radio or television reception, which is found by turning the equipment off and on, the user is encouraged to try to correct the interference by one or more of the following measures:

- Reorient or relocate the receiving antenna
- Increase the separation between the equipment or devices
- Connect the equipment to an outlet other than the receiver's
- Consult a dealer or an experienced radio/TV technician for assistance

FCC Caution: Any changes or modifications not expressly approved by the party responsible for compliance could void the user's authority to operate this equipment.

This device complies with Part 15 of the FCC Rules. Operation is subject to the following two conditions: (1) This device may not cause harmful interference, and (2) This device must accept any interference received, including interference that may cause undesired operation.

FCC RF Radiation Exposure Statement

This device and its antenna(s) must operate with a separation distance of at least 20 cm from all persons and must not be co-located or operating in conjunction with any other antenna or transmitter. End-users must be provided with specific operations for satisfying RF exposure compliance.

UG-WPC51AB-102102NC JL

Table of Contents

Chapter 1:Introduction 1	
The Dual-Band Wireless A+BNotebook Adapter 1	
Features 1	
Chapter 2:Planning Your Wireless Network 2	
Network Topology 2	
Ad-Hoc versus Infrastructure Mode 2	
Chapter 3:Getting to Know the Dual-Band Wireless A+B Notebook Adapter 4	
The Adapter' s LEDs 4	
Chapter 4:Software Installation and Configuration 5	
Overview 5	
Setup Wizard Instructions for Windows 98, Me, and 2000 6	
Setup Wizard Instructions for Windows XP 10	
Chapter 5:Hardware Installation 12	
Chapter 6:Using the WLANMonitor for Windows 98, Me, and 2000 13	
Overview 13	
Accessing the WLANMonitor 13	
Link Information 14	
Site Survey 16	
Profiles 18	
Creating a New Profile 20	
Chapter 7: Using the Wireless Zero Configuration for Windows XP 28	
Appendix A:Troubleshooting 30	
Common Problems and Solutions 30	
Frequently Asked Questions 31	
Appendix B:Glossary 35	
Appendix C: Specifications 40	
Environmental 41	
Appendix D: Warranty Information 42	
Appendix E:Contact Information 43	

Chapter 1:Introduction

The Linksys Dual-Band Wireless A+BNotebook Adapter lets your notebook communicate with today' s wireless network standard and prepares you for the future. With one PCCard, you can connect with the 2.4GHz, 802.11b wireless networks so prevalent in homes, businesses and public "hotspots" already, and also a growing number of 5GHz, 802.11a networks that are spreading across the country.

It' s simple to use. Just pop it into a PCCard slot, and run the included Setup Wizard, which will walk you through the configuration. To keep your communications

secure, the PCCard supports up to 152-bit data encryption.

802.11b wireless networks are commonly found in corporate environments and are used in homes for household Internet connectivity without the need for running cables. They' re also popping up all over the country in coffee shops, air-ports, hotels, convention centers, and other public spaces offering "on-the-go" connectivity to mobile users. The 802.11a standard is almost five times faster than 802.11b, and operates in the less crowded 5GHz radio band, but it' s not as common —yet. It is quickly being deployed wherever higher-speed connectivity is desired.

Join the wireless revolution. With the Linksys Dual-Band Wireless Notebook Adapter, you' ll be ready to connect to either type of wireless network, wherever you go, now and in the future.

- Connects to Either 802.11b (2.4GHz) or 802.11a (5GHz) Networks without Changing Adapters
- Up to 152-bit WEPEncryption
- Easy-to-use Setup Wizard
- Detailed Monitoring and Performance Utility
- 802.11b and 802.11a Compliant
- Free Technical Support —24 Hours a Day, 7 Days a Week, Toll-Free US Calls
- 1-Year Limited Warranty

Chapter 2: Planning Your Wireless Network

A wireless local area network (WLAN) is exactly like a regular local area network (LAN), except that each computer in the WLAN uses a wireless device to connect to the network. Computers in a WLAN share the same frequency channel and SSID, which is an identification name for wireless devices. Unlike wired networks, wireless networks have two different modes in which they may be set up: **infrastructure** and **ad-hoc**. An infrastructure configuration is a WLAN and wired LAN communicating to each other through an access point. An ad-hoc configuration is wireless-equipped computers communicating directly with each other. Choosing between these two modes depends on whether or not the wireless network needs to share data or peripherals with a wired network or not.

If the computers on the wireless network need to be accessed by a wired network or need to share a peripheral, such as a printer, with the wired network computers, the wireless network should be set up in **infrastructure** mode. (See Figure 2-1.) The basis of infrastructure mode centers around an *access point*, which serves

as the main point of communications in a wireless network. Access points transmit data to PCs equipped with wireless network cards, which can *roam* within a certain radial range of the access point. Multiple access points can be arranged to work in succession to extend the roaming range, and can be set up to communicate with your Ethernet (wired) hardware as well.



Figure 2-1

Figure 2-1

If the wireless network is relatively small and needs to share resources only with the other computers on the wireless network, then the **ad-hoc** mode can be used. (See Figure 2-2.) Ad-hoc mode allows computers equipped with wireless transmitters and receivers to communicate directly with each other, eliminating the need for an access point. The drawback of this mode is that, in Ad-Hoc mode, wireless-equipped computers are not able to communicate with computers on a wired network. And, of course, communication between the wireless-equipped computers is limited by the distance and interference directly between them.



Figure 2-2

Chapter 3: Getting to Know the Dual-Band Wireless A+ B Notebook Adapter

Flash alternately

Green. The LEDs flash in alternate sequence, one after another, when the Adapter is searching for an access point or wireless router.

Flash in unison

Green. The LEDs flash in unison when the Adapter is connected to an access point or wireless router.

Figure 3-1

Chapter 4: Software Installation and Configuration

The Dual-Band Wireless A+B Notebook Adapter Setup Wizard will guide you through the installation procedure. The Setup Wizard will install the WLAN Monitor and Device Driver, as well as configure the Adapter.



Important: You must run the Setup Wizard to install the software before installing the hardware.

Insert the **Setup Wizard CD-ROM** into your CD-ROM drive. The Setup Wizard should run automatically, and Figure 4-1 should appear. If it does not, click the **Start** button and choose **Run**. In the field that appears, enter **D:\setup.exe** (if “D” is the letter of your CD-ROM drive).



Figure 4-1

If your PC is using Windows 98, Me, or 2000, proceed to the next section, “Setup Wizard Instructions for Windows 98, Me, and 2000.” If your PC is using Windows XP, proceed to this section, “Setup Wizard Instructions for Windows XP.”

Important: You must run the Setup Wizard to install the software before installing the hardware.

Figure 4-1

Setup Wizard Instructions for Windows 98, Me, and 2000

1. To install the Adapter, click the **Next** button on the *Welcome* screen.
2. After reading the License Agreement, click the **Next** button if you agree, or click the **Cancel** button to end the installation.

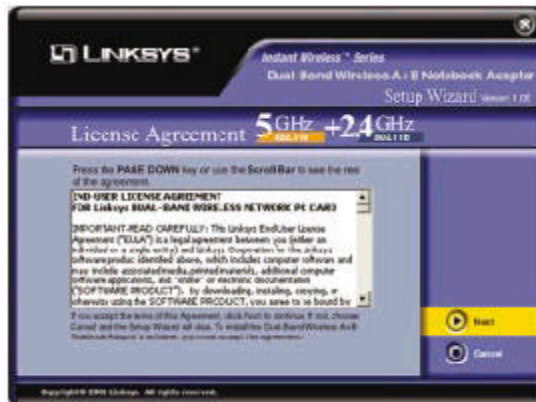


Figure 4-2

3. The Setup Wizard will ask you to choose a wireless mode. Click the **Infrastructure Mode** radio button if you want your wireless computers to network with computers on your wired network using a wireless access point. Click the **Ad-Hoc Mode** radio button if you want multiple wireless computers to network directly with each other. Do not use the Ad-Hoc mode if you want your wireless computers to communicate with computers on your wired network.

In the *SSID* field, enter the **SSID** of your wireless network. The SSID must be identical for all devices in the network. The default setting is **linksys** (all lowercase). Click the **Next** button.



Figure 4-3

4. If you chose Infrastructure Mode, go to **Step 5** now. If you chose Ad-Hoc Mode, select the type of network your PC will connect to, **802.11a** or **802.11b**. Click the **Next** button, and go to **Step 5**. Click the **Back** button to change any settings.

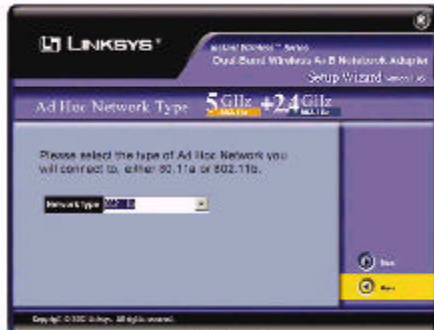


Figure 4-4

5. The Setup Wizard will ask you to review your settings before it starts to copy files. Click the **Next** button to save these settings, or click the **Back** button to change any settings.

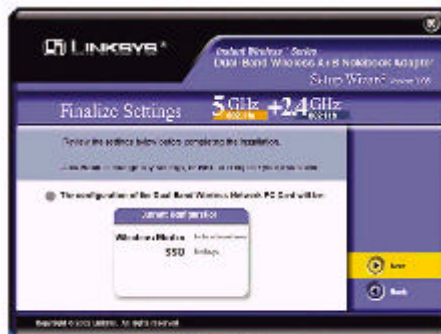


Figure 4-5

6. For Windows 2000, you may be informed that a digital signature has not been found (see Figure 4-6). This is normal, and it has been verified that the Adapter does work with Windows 2000. Click the **Yes** button to continue. Windows will begin installing the driver files. If Windows asks you for the original Windows CD-ROM, insert the CD-ROM, and direct Windows to the proper location for the CD-ROM (e.g., **D:**).

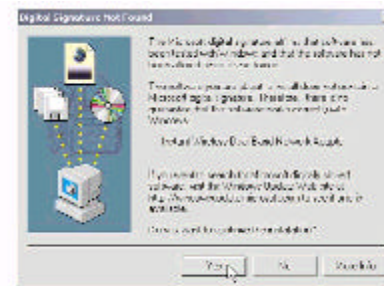


Figure 4-6

7. After the files have been successfully copied, the screen in Figure 4-7 will appear. Click the **Exit** button.

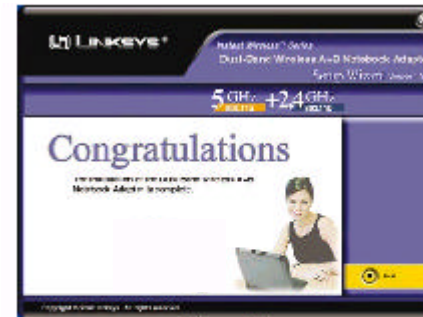


Figure 4-7

Proceed to "Chapter 5: Hardware Installation."

Setup Wizard Instructions for Windows XP

1. To install the Adapter, click the **Next** button on the *Welcome* screen.



Figure 4-8

2. Windows will notify you that the driver has not passed Windows Logo test-ing. This is normal, and it has been verified that the Adapter does work with Windows XP. Click the **Continue Anyway** button.



Figure 4-9

3. After the files have been successfully copied, the screen in Figure 4-10 will appear. Click the **Exit** button.

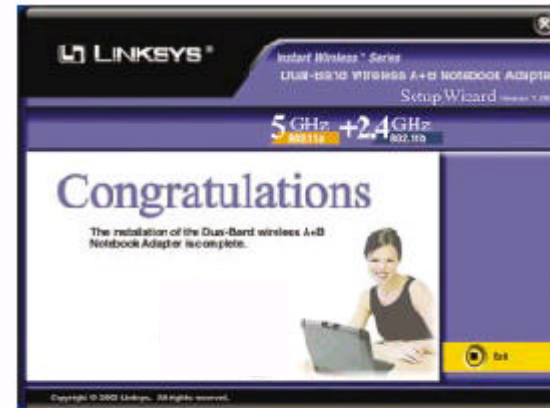


Figure 4-10

Proceed to "Chapter 5: Hardware Installation."

Chapter 5: Hardware Installation



Important: You must run the Setup Wizard to install the software before installing the hardware.

1. Remove any CDs or disks from their drives, and turn off your notebook PC.
2. Locate an available PCMCIA slot on your notebook PC.
3. With the Adapter's 68-pin connector facing the PCMCIA slot and the "Dual-Band Wireless A+B Notebook Adapter" label facing up, slide the Adapter completely into the PCMCIA slot.
4. Restart your notebook PC.
5. You may see several screens appear as the driver installation is finalized. For Windows 2000, you may be informed that a digital signature has not been found. This is normal, and it has been verified that the Adapter does work with Windows 2000. Click the **Yes** button to continue, and click the **Finish** button to complete the installation.

Congratulations! The installation of the Dual-Band Wireless A+B Notebook Adapter is complete.

If your PC is using Windows 98, Me, or 2000, proceed to the next section, "Chapter 6: Using the WLAN Monitor for Windows 98, Me, and 2000."

If your PC is using Windows XP, proceed to "Chapter 7: Using the Wireless Zero Configuration for Windows XP."

Important: You must run the Setup Wizard to install the software before installing the hardware.

Figure 5-1

Chapter 6: Using the WLAN Monitor for Windows 98, Me, and 2000

Overview

Use the WLAN Monitor to check the link information, search for available wireless networks, or create profiles that hold different configuration settings.

Accessing the WLAN Monitor

After installing the Adapter,

the Dual-Band Wireless A+B Notebook Adapter WLAN Monitor icon will appear in your system tray. Double-click the icon (see Figure 6-1). The *Link Information* screen will appear. From this screen, you can find out how strong the current wireless signal is and how good the connection's quality is. You can also click the *More Information* button to view additional status information about the current wireless connection. To search for available wireless networks, click the **Site Survey** tab. To perform configuration changes, click the **Profiles** tab.

Figure 6-1

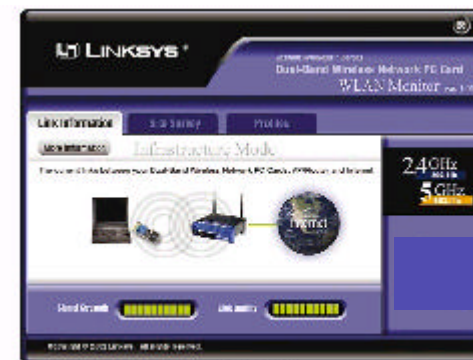


Figure 6-2

Link Information

The *Link Information* screen displays signal strength and link quality information about the current connection and provides a button to click for additional status information.



Figure 6-3

Ad-Hoc Mode or **Infrastructure Mode** - The screen indicates whether the Adapter is currently working in ad-hoc or infrastructure mode.

Signal Strength - The Signal Strength bar indicates signal strength, from 0 to 100%.

Link Quality - The Link Quality bar indicates the quality of the wireless network connection, from 0 to 100%.

Click the **More Information** button to view more information about the wireless network connection.

Click the **X** (Close) button in the upper right corner to exit the WLAN Monitor.

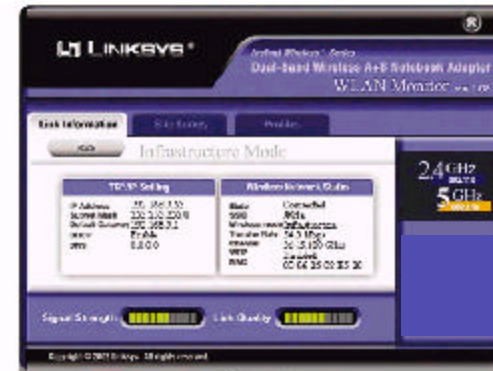


Figure 6-4

TCP/IP Setting

IP Address - The IP Address of the Adapter.

Subnet Mask - The Subnet Mask of the Adapter.

Default Gateway - The Default Gateway address of the Adapter.

DHCP - The status of the DHCP client.

DNS - The DNS address of the Adapter.

Wireless Network Status

State - The status of the wireless network connection.

SSID - The unique name of the wireless network.

Wireless Mode - The mode of the wireless network currently in use.

Transfer Rate - The data transfer rate of the current connection.

Channel - The channel to which the wireless network devices are set.

WEP - The status of the WEP encryption security feature.

MAC - The MAC address of the wireless network's access point.

Signal Strength - The Signal Strength bar indicates signal strength, from 0 to 100%.

Link Quality - The Link Quality bar indicates the quality of the wireless network connection, from 0 to 100%.

Click the **Back** button to return to the initial *Link Information* screen. Click the **X** (Close) button in the upper right corner to exit the WLAN Monitor.

Site Survey

The *Site Survey* screen displays a list of infrastructure and ad-hoc networks available for connection.

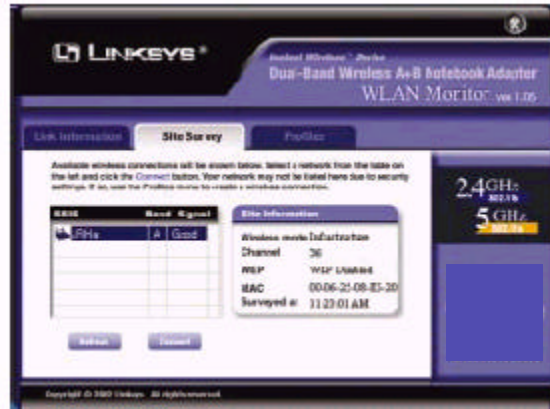


Figure 6-5

SSID - The SSID or unique name of the wireless network.

Band - The type of wireless network. “A” represents 802.11a (5GHz), and “B” represents 802.11b (2.4GHz).

Signal - The percentage of signal strength, from 0 to 100%.

Site Information

Wireless Mode - The mode of the wireless network currently in use.

Channel - The channel to which the wireless network devices are set.

WEP - The status of the WEP encryption security feature.

MAC - The MAC address of the wireless network’s access point.

Surveyed at - The time at which the wireless network was scanned.

Refresh - Click the **Refresh** button to perform a new search for wireless devices.

Connect - To connect to one of the networks on the list, select the wireless network, and click the **Connect** button. If the wireless network has WEP encryption enabled, you will see the screen shown in Figure 6-6.

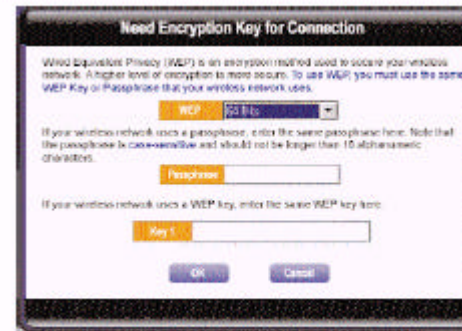


Figure 6-6

In the *WEP* drop-down box, select the type of WEP encryption used by the wireless network: **64-bit**, **128-bit**, or **152-bit** WEP.

If the wireless network uses a passphrase, enter the passphrase in the *Passphrase* field. If the wireless network uses a WEP key, enter the WEP key in the *Key 1* field.

Click the **OK** button to complete the network connection and return to the *Site Survey* screen, or click the **Cancel** button to cancel the network connection and return to the *Site Survey* screen.

On the *Site Survey* screen, click the **X** (Close) button in the upper right corner to exit the WLAN Monitor.

Profiles

The *Profiles* screen lets you save different configuration profiles for different network setups. You can also import or export profiles. The default profile holds the initial configuration saved when you ran the Setup Wizard.



Figure 6-7

Profile - Name of the connection profile.

SSID - The wireless network's unique name, as set in the connection profile.

Profile Information

Network Type - The mode of the wireless network currently in use.

Transfer Rate - The data transfer rate of the current connection. (In *Auto* mode, the Adapter dynamically shifts to the fastest data transfer rate possible at any given time.)

Channel - The channel to which the wireless network devices are set.

WEP - The status of the WEP encryption security feature.

Connect - To connect to a wireless network using a specific profile, select the profile, and click the **Connect** button.

Edit - Select a profile, and click the **Edit** button to change an existing profile.

New - Click the **New** button to create a new profile. See the next section, "Creating a New Profile," for detailed instructions.

Import - Click the **Import** button to import a profile that has been saved in another location. Select the appropriate file, and click the **Open** button.

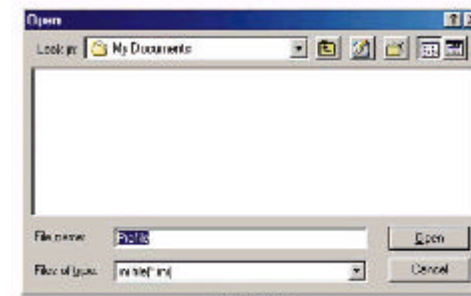


Figure 6-8

Export - To save the profile(s) in a different location, click the **Export** button. Direct Windows to the appropriate folder, and click the **Save** button.

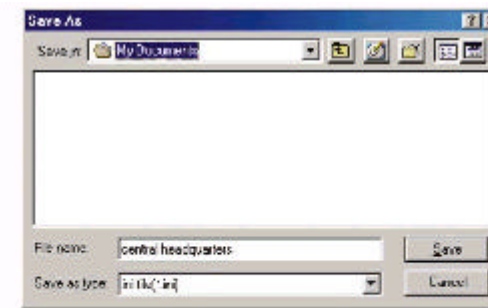
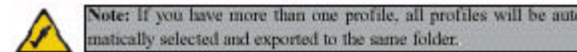


Figure 6-9



Delete - Click the **Delete** button to delete a profile.

Click the **X** (Close) button in the upper right corner to exit the WLAN Monitor.

Creating a New Profile

1. On the *Profiles* screen, click the **New** button to create a new profile.

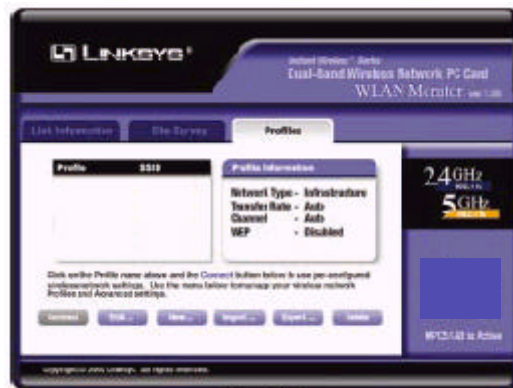


Figure 6-10

2. The *Choose a wireless mode* screen shows a choice of two wireless modes. Click the **Infrastructure Mode** radio button if you want your wireless computers to communicate with computers on your wired network via a wireless access point. Click the **Ad-Hoc Mode** radio button if you want multiple wireless computers to communicate directly with each other. Click the **Next** button to continue or the **Back** button to return to the previous screen.

Infrastructure Mode - This mode allows wireless and wired networks to communicate through an access point.

Ad-Hoc Mode - This mode allows wireless-equipped computers to communicate directly with each other. No access point is used.

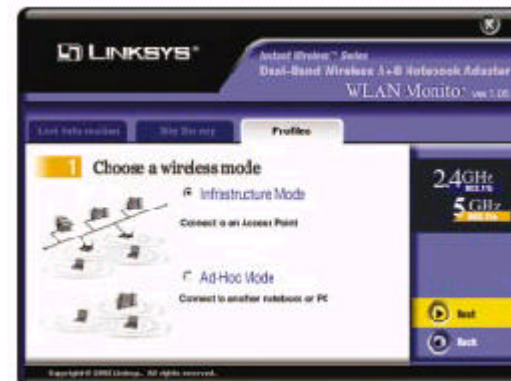


Figure 6-11

3. The *Basic Settings* screen will appear. Complete the *Profile Name* and *SSID* fields. The default SSID setting is **linksys** (all lowercase). Then select the appropriate setting from the *Network Type* drop-down box. Click the **Next** button to continue or the **Back** button to return to the previous screen.

Profile Name - Give this new profile a name.

SSID - The SSID is the unique name shared by all devices in a wireless network. The SSID must be identical for all devices in the wireless network. It is case-sensitive and must not exceed 32 characters (use any of the characters on the keyboard). Make sure this setting is the same for all devices in your wireless network.

Network Type - For infrastructure networks, the Network Type is set to Auto and cannot be changed. For ad-hoc networks, choose the appropriate setting, **802.11a** (5GHz) or **802.11b** (2.4GHz).

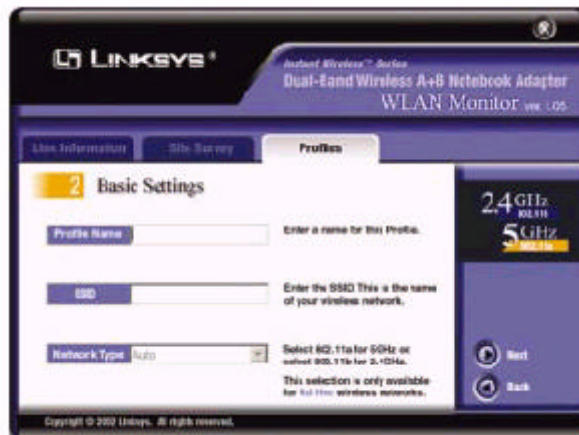


Figure 6-12

4. The *Network Setting* screen will appear.

If your network has a DHCP server, click the radio button next to **Obtain an IP address automatically (DHCP)**. Click the **Next** button to continue, or click the **Back** button to return to the previous screen. Then go to *step 6*. If your network does not have a DHCP server, click the radio button next to **Specify the IP address**. Click the **Next** button to continue, or click the **Back** button to return to the previous screen. Then go to *step 5*.

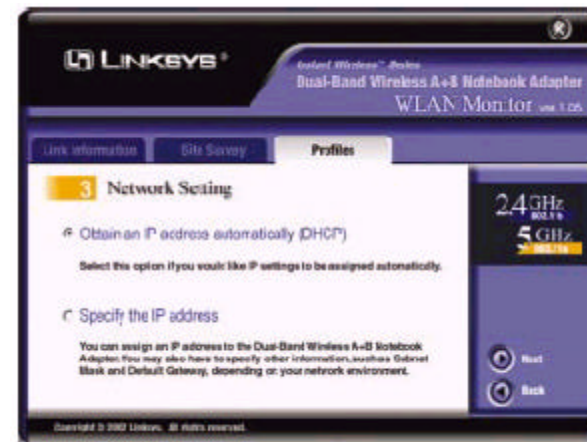


Figure 6-13

5. The *Network Setting - Specify IP address* screen will appear next. Enter an **IP Address**, **Subnet Mask**, **Default Gateway**, and **DNS** appropriate for your network. Enter each address in this format: **xxx.xxx.xxx.xxx** (the x's represent the numbers that make up each address). You must specify the IP Address and Subnet Mask on this screen. If you are unsure about the Default Gateway and DNS addresses, then leave these fields alone. Click the **Next** button to continue or the **Back** button to return to the previous screen.

IP Address - This IP Address must be unique to your network.

Subnet Mask - The Adapter's Subnet Mask must be the same as your wired network's Subnet Mask.

Default Gateway - Enter the IP address of your network's Gateway here.

DNS - Enter the DNS addresses of your Ethernet (wired) network here.

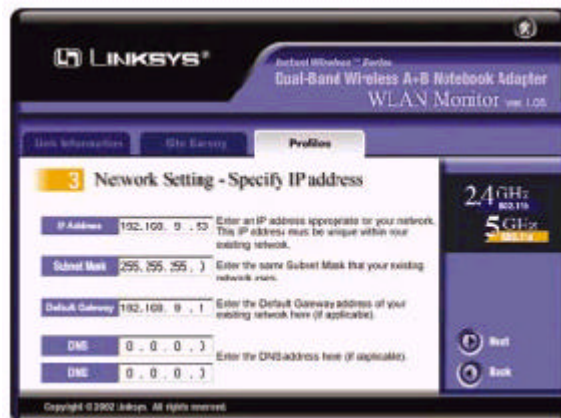


Figure 6-14

6. If you are configuring the Adapter for a 2.4GHz, 802.11b network, then go to *step 7*. If you are configuring the Adapter for a 2.4GHz, 802.11b network, then go to *step 8*.

7. The *Security Settings* screen will appear next. Enable or disable Wired Equivalent Privacy (WEP) encryption for your wireless network. If you enable WEP, enter a Passphrase or WEP key. Click the **Next** button to continue or the **Back** button to return to the previous screen.

WEP (Disabled/64-bit WEP/128-bit WEP) - If you do not want to use WEP encryption, choose **Disabled**. To use WEP encryption (recommended to increase network security), select **64-bit** or **128-bit WEP** from the drop-down menu, and enter either a Passphrase or WEP key.

Passphrase - Instead of manually entering WEP keys, you can enter a Passphrase, so a WEP key is automatically generated. It is case-sensitive and should not be longer than 16 alphanumeric characters. This passphrase must match the passphrase of your wireless network and is compatible with Linksys wireless products only. (If you have any non-Linksys wireless products, enter the WEP key(s) manually on those products.)

Key 1 - This WEP key must match the WEP key of your wireless network.

If you are using 64-bit WEP encryption, then the key must consist of exactly 10 hexadecimal characters in length. If you are using 128-bit WEP encryption, then the key must consist of exactly 26 hexadecimal characters in length. Valid hexadecimal characters are "0" to "9" and "A" to "F".



Figure 6-15

8. The *Security Settings* screen will appear next. Set the Wired Equivalent Privacy (WEP) encryption for your wireless network by selecting a WEP configuration method (recommended to increase network security). If you enable WEP encryption, enter a WEP key in the *Key 1* field. Click the **Next** button to continue or the **Back** button to return to the previous screen.

WEP (Disabled/64-bit WEP/128-bit WEP/152-bit WEP) - If you do not want to use WEP encryption, choose **Disabled**.

To use WEP encryption, select **64-bit**, **128-bit WEP**, or **152-bit WEP** from the drop-down menu. Then enter the WEP key of your wireless network in the *Key 1* field.

Key 1 - This WEP key must match the WEP key of your wireless network.

If you are using 64-bit WEP encryption, then the key must consist of exactly 10 hexadecimal characters in length. If you are using 128-bit WEP encryption, then the key must consist of exactly 26 hexadecimal characters in length. Valid hexadecimal characters are “0” to “9” and “A” to “F”.



Figure 6-16

9. The *Confirm New Settings* screen will appear next. The former and new settings are shown. To save the new settings, click the **Yes** button. To cancel the settings and return to the *Profiles* screen, click the **No** button. To edit the new settings, click the **Back** button.



Figure 6-17

10. The *Congratulations* screen will appear next. Click **Activate new settings now** to implement the new settings immediately and return to the *Link Information* screen. Click **Activate new settings later** to keep the current settings active and return to the *Profiles* screen.

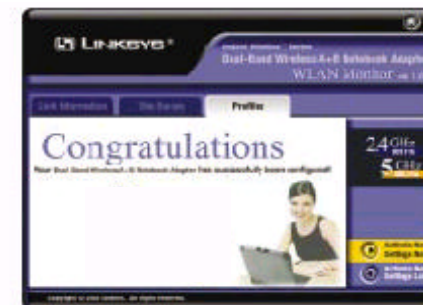



Figure 6-18

You have successfully created a connection profile. Click the X (Close) button in the upper right corner to exit the WLAN Monitor.

Chapter 7: Using the Wireless Zero Configuration for Windows XP

 **Important for Windows XP users:** Windows XP has a built-in configuration tool. Use the Windows XP Wireless Zero Configuration (in the system tray at the bottom of your screen) to configure the Adapter.

1. After installing the Adapter, the Windows XP Wireless Zero Configuration icon will appear in your computer's system tray (see Figure 7-1). Double-click the icon.

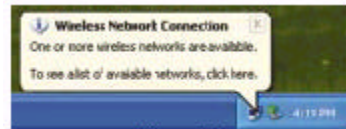


Figure 7-1

2. The screen that appears will show any available wireless network. Select a network, and then click the **Connect** button.

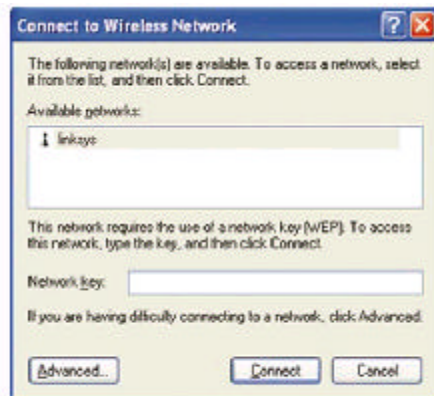



Figure 7-2

3. If your access point has WEP encryption enabled, the screen in Figure 7-3 will appear. Enter the WEP key of your wireless network in the *Network key* field. Click the **Connect** button.

 **Note:** Windows XP does not support the use of a passphrase. Enter the exact WEP key used by your access point.

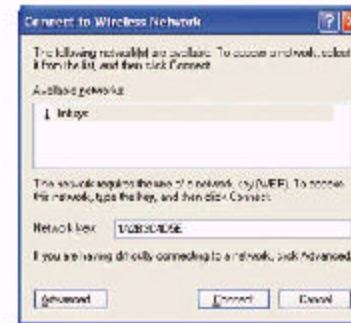


Figure 7-3

To find the WEP encryption key settings of the other wireless devices in your network, such as an access point or wireless router, you may use any device's web-based utility to check the WEP encryption screen for the correct key entries. If you are using other manufacturers' access points, refer to their documentation for more information about WEP encryption.

4. The screen in Figure 7-4 will appear if your connection is active.

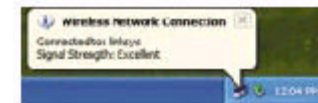


Figure 7-4

For more information about WEP, refer to your access point's user guide, or visit www.linksys.com.

For more information about wireless networking on a Windows XP computer, enter the keyword **wireless** in the Windows XP search engine.

Congratulations!
Your notebook has successfully connected to your wireless network.

Federal Communication Commission Interference Statement

This equipment has been tested and found to comply with the limits for a Class B digital device, pursuant to Part 15 of the FCC Rules. These limits are designed to provide reasonable protection against harmful interference in a residential installation. This equipment generates, uses and can radiate radio frequency energy and, if not installed and used in accordance with the instructions, may cause harmful interference to radio communications. However, there is no guarantee that interference will not occur in a particular installation. If this equipment does cause harmful interference to radio or television reception, which can be determined by turning the equipment off and on, the user is encouraged to try to correct the interference by one of the following measures:

- Reorient or relocate the receiving antenna.
- Increase the separation between the equipment and receiver.
- Connect the equipment into an outlet on a circuit different from that to which the receiver is connected.
- Consult the dealer or an experienced radio/TV technician for help.

FCC Caution: To assure continued compliance, (example - use only shielded interface cables when connecting to computer or peripheral devices) any changes or modifications not expressly approved by the party responsible for compliance could void the user's authority to operate this equipment.

This device complies with Part 15 of the FCC Rules. Operation is subject to the following two conditions: (1) This device may not cause harmful interference, and (2) this device must accept any interference received, including interference that may cause undesired operation.

IMPORTANT NOTE:

FCC Radiation Exposure Statement:

This equipment complies with FCC radiation exposure limits set forth for an uncontrolled environment. This equipment should be installed and operated with minimum distance 20cm between the radiator & your body.

This transmitter must not be co-located or operating in conjunction with any other antenna or transmitter.

Frequency band 5150 - 5250 MHz out of doors will void the user's authority to operate the equipment.