

THE LINKSYS GROUP, INC.

17401 Armstrong Ave., Irvine, CA 92614
TEL: (949) 261-1288 FAX: (949) 261-8868

Wireless Presentation Gateway

WPG11

User's Manual

FCC ID:PKW-WPG11

Draft 2.0 – Apr. 2002

Copyright statement

No part of this publication may be reproduced, stored in a retrieval system, or transmitted in any form or by any means, whether electronic, mechanical, photocopying, recording, or otherwise without the prior written consent of the publisher.

Printed in Taiwan, April 2002

IMPORTANT INFORMATION

Federal Communication Commission Interference Statement

This equipment has been tested and found to comply with the limits for a Class B digital device, pursuant to Part 15 of the FCC Rules. These limits are designed to provide reasonable protection against harmful interference in a residential installation. This equipment generates, uses and can radiate radio frequency energy and, if not installed and used in accordance with the instructions, may cause harmful interference to radio communications. However, there is no guarantee that interference will not occur in a particular installation. If this equipment does cause harmful interference to radio or television reception, which can be determined by turning the equipment off and on, the user is encouraged to try to correct the interference by one of the following measures:

- Reorient or relocate the receiving antenna.
- Increase the separation between the equipment and receiver.
- Connect the equipment into an outlet on a circuit different from that to which the receiver is connected.
- Consult the dealer or an experienced radio/TV technician for help.

FCC Caution: To assure continued compliance, (example - use only shielded interface cables when connecting to computer or peripheral devices). Any changes or modifications not expressly approved by the party responsible for compliance could void the user's authority to operate this equipment. This device complies with Part 15 of the FCC Rules. Operation is subject to the following two conditions: (1) This device may not cause harmful interference, and (2) this device must accept any interference received, including interference that may cause undesired operation.

IMPORTANT NOTE:

FCC RF Radiation Exposure Statement:

This equipment complies with FCC RF radiation exposure limits set forth for an uncontrolled environment. This equipment should be installed and operated with a minimum distance of 20 centimeters between the radiator and your body.

This transmitter must not be co-located or operating in conjunction with any other antenna or transmitter.

R&TTE Compliance Statement

This equipment complies with all the requirements of the DIRECTIVE 1999/5/EC OF THE EUROPEAN PARLIAMENT AND THE COUNCIL of 9 March 1999 on radio equipment and telecommunication terminal Equipment and the mutual recognition of their conformity (R&TTE).

The R&TTE Directive repeals and replaces in the directive 98/13/EEC (Telecommunications Terminal Equipment and Satellite Earth Station Equipment) As of April 8, 2000.

Safety

This equipment is designed with the utmost care for the safety of those who install and use it. However, special attention must be paid to the dangers of electric shock and static electricity when working with electrical equipment. All guidelines of this manual and of the computer manufacturer must therefore be allowed at all times to ensure the safe use of the equipment.

EU Countries intended for use

The ETSI version of this device is intended for home and office use in Austria, Belgium, Denmark, Finland, France (with Frequency channel restrictions), Germany, Greece, Iceland, Ireland, Italy, Luxembourg, Netherlands, Norway, Portugal, Spain, Sweden, Switzerland and United Kingdom.

The ETSI version of this device is also authorized for use in EFTA member states Iceland, Liechtenstein, Norway and Switzerland.

EU Countries Not intended for use

None.

Potential restrictive use

France: Only channels 10,11,12, and13

Safety Notification

Your Wireless Presentation Gateway should be placed in a safe and secure location. To ensure proper operation, please keep the unit away from water and other damaging elements.




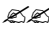
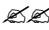

-  Please read the installation guide thoroughly before you install the Wireless Presentation Gateway.
-  The Wireless Projector should be repaired by authorized and qualified personnel only
-  Please do not try to open or repair the Wireless Presentation Gateway yourself.
-  Do not place this product in a damp or humid environment, e.g. in a bathroom.
-  The Wireless Presentation Gateway should be placed in a sheltered and non-slippery location within a temperature range of **+5 to +40** Celsius degree.
-  Please do not expose the Wireless Presentation Gateway to direct sunlight or other heat sources. The housing and electronic components may be damaged by direct sunlight or heat sources.

TABLE OF CONTENTS

1. Introduction.....	7
2. Hardware Installation	8
3. WPG11 Web Configuration	10
4. EPS player Program	14
5. Troubleshooting.....	20
6.Specifications.....	21

1. INTRODUCTION

1.1 Congratulation on Your Purchase of the Wireless Presentation Gateway

The Wireless Presentation Gateway features state of the art technology that helps bring wireless capability to a conventional projector. You can now access the projector through a wireless network effortlessly without being constrained by the physical layout of a wired connection.

The Wireless Presentation Gateway allows for multiple dynamic wireless connections from several PCs. The benefit of using Wireless Presentation Gateway is therefore enormous. Imagine -- a user can join an ongoing presentation session at any time and wait for his turn to do a short presentation over the projector. When presentation is no longer required, he can simply log off and leave the presentation group without much disturbance.

WPG11 is therefore, your perfect option for a company conference, and other occasions (many people)

1.2 Getting Started

This user's manual will assist you with the installation procedure. Please take a few minutes now to review the complete manual before getting started. This can save you much time and trouble later. In the later sections, the Wireless Presentation Gateway is sometimes abbreviated as WPG11. Both terms will be used interchangeably hereafter.

1.3 What's in the Box?

The package you have received should contain the following items:

- ☞ Wireless Presentation Gateway
- ☞ User's Manual (the document you are now reading)
- ☞ Power Adapter

Note: If any piece is missing, please contact your dealer.

2. HARDWARE INSTALLATION

2.1 Front panel

EPS11 has 3 LED indicators on its front panel. Refer to the following table for the meaning of each indicator.

LED's	Description.
Power	Power status indicator. A steady light indicates power is being applied to the EPS11 unit.
Traffic	Data traffic indicator. A blinking light indicates that at least one person is doing a presentation via EPS11 on the projector.
Link Status	Wireless link status indicator. A steady light indicates the EPS11 unit is connected to an AP or Ad-Hoc client through a wireless network.

2.2 Rear Panel

The rear panel features an AC power inlet socket, a VGA port, and a Factory Reset button. Refer to the table below for the description of each item.

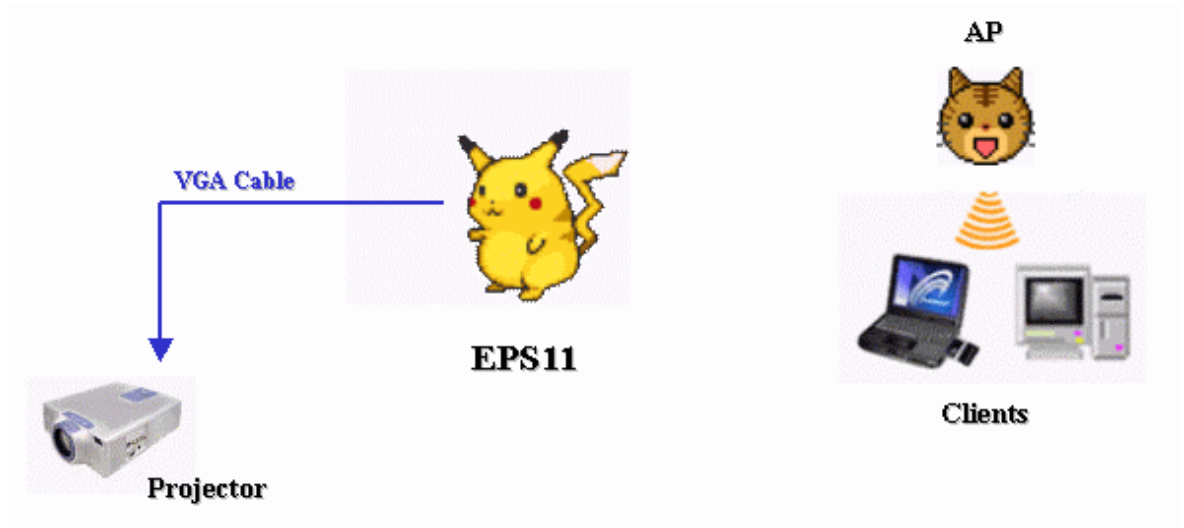
Power	The power inlet socket of the EPS11. Please make sure that you use the right power adaptor to avoid damaging this unit.
VGA port	The VGA output of the EPS11. It is used to connect to the projector's VGA port with a VGA cable.
Reset button	Pressing this button for 5 seconds resets the configuration to the default setting.

2.3 Network Setup

You can easily connect to EPS11 with the EPS11's client utility

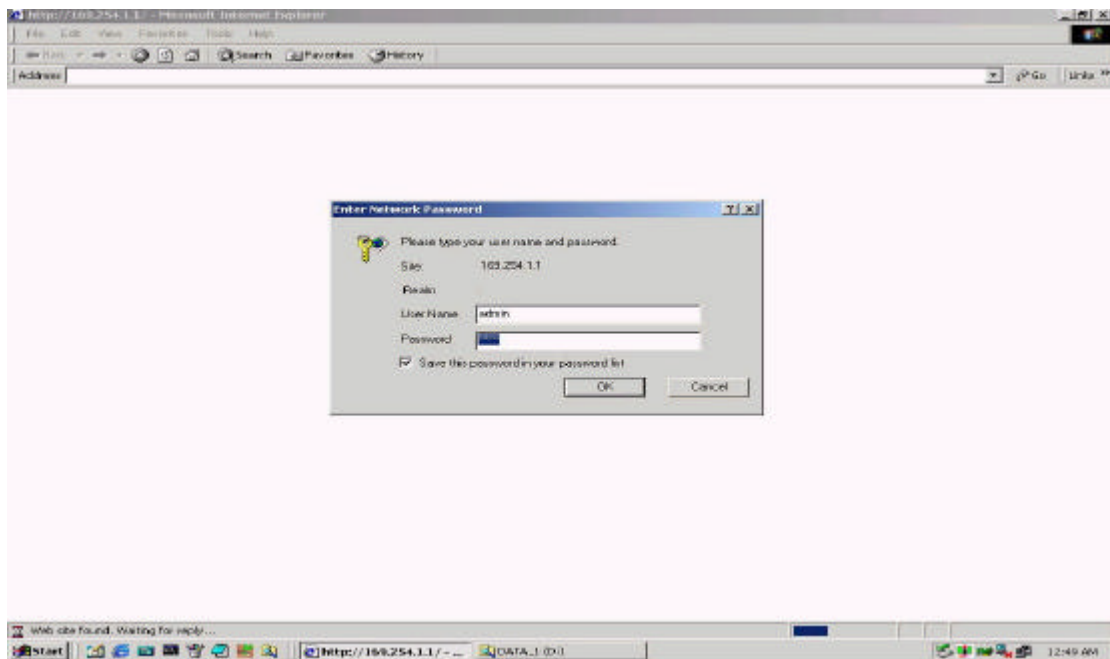
irrespective of the network setting of your computer. The image of your computer desktop should transfer to the Projector via EPS11 immediately.

The architecture of a communication network with EPS11 is shown below.

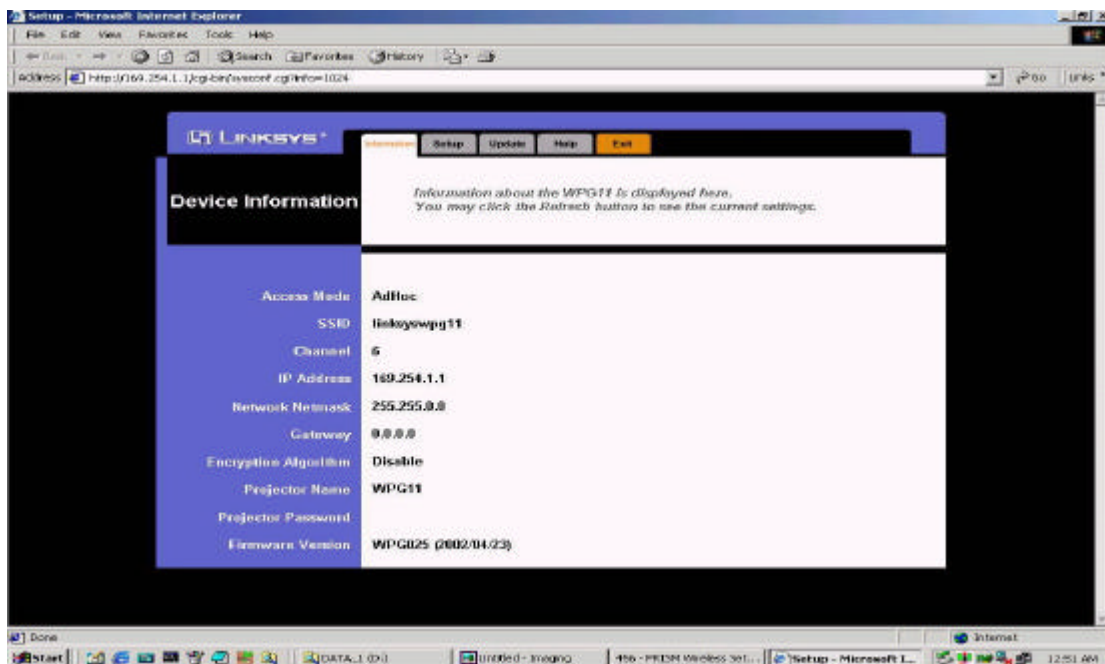


3. WPG11 WEB Configuration

1. Open the web browser and hyperlink to the default IP address “169.254.1.1”. An authentication dialog box will pop up like the one shown below.
2. Enter the correct username and password in the dialog window. The default username and password are both “admin”.

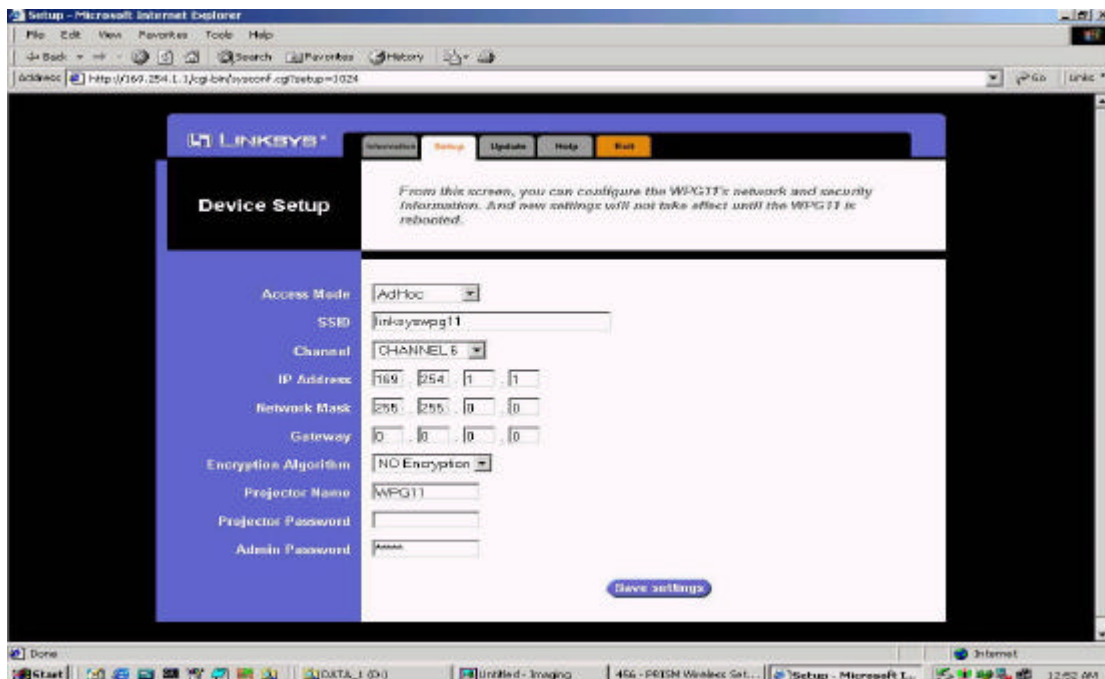


3. After a successful logon, the window first displays the values of the current WPG11 setting, including “Projector Name”, “Projector Password” and “Firmware version”.



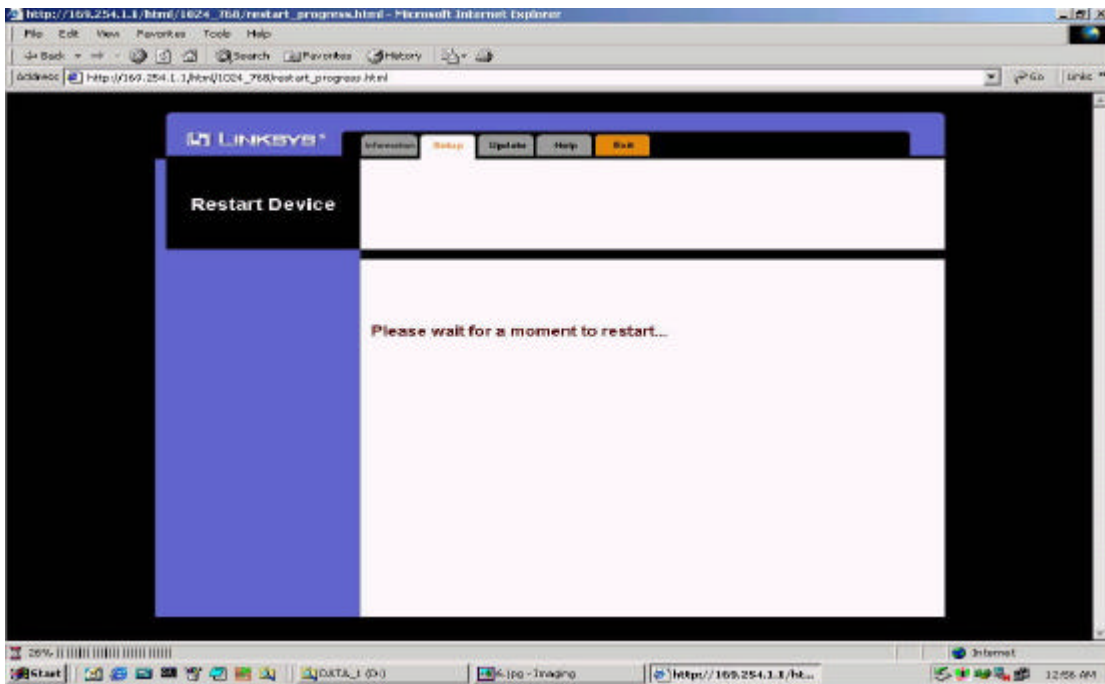
4. Click the **Setup** tab on top of the window to move to the device setup page.

Enter the desired “Projector Name”, “Projector Password” and “Admin Password” for your device in the appropriate fields. (You can only input at most 8 characters in the “Projector Password” field.)



5. When done, click the **Save** button.

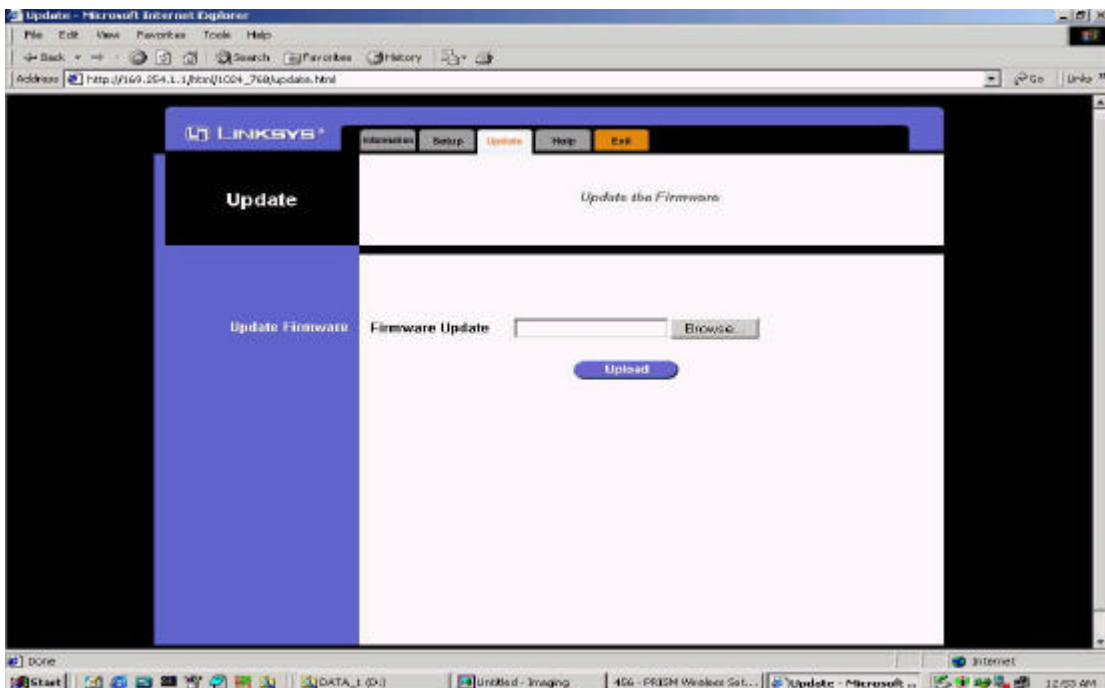
The device will now begin saving the new setting and display this progress. When the progress bar at the bottom of the web browser counts to 100%, the setting is saved.



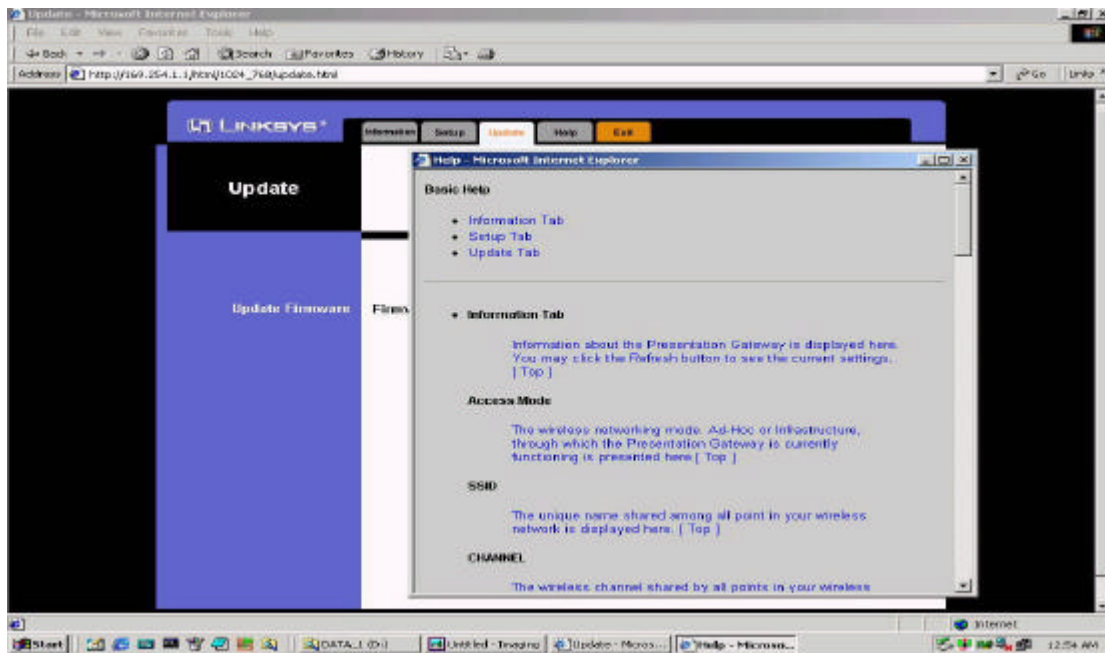
6. Click the **Update** tab to navigate to the firmware-update page.

Next, click the **Browser** button to select the new firmware image from your local file system. When done with firmware selection, click the **Update** button to replace your current firmware with the selected file.

The update process may take some seconds to complete.



7. You can click the **Help** tab to obtain more information on this WPG11 at any time. Or you can click the **Exit** tab to close the web browser.



4. EPS player Program

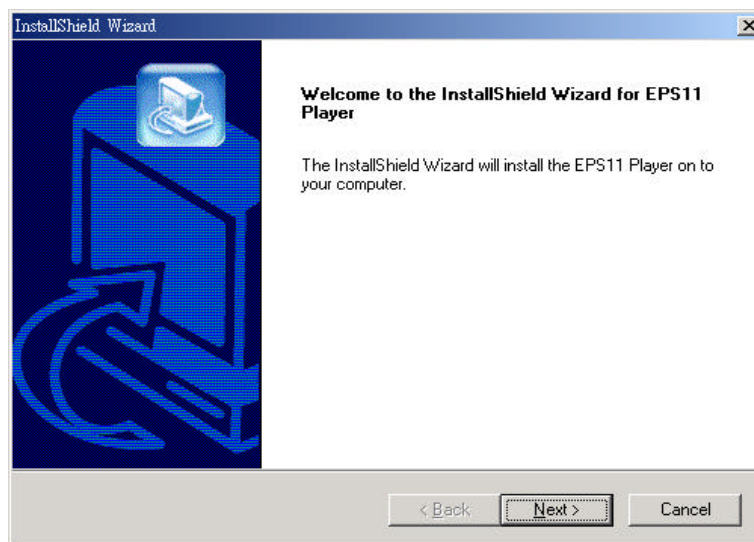
This section provides instructions on how to install and run the EPS player software program on your PC. The software program enables you to connect your PC to the EPS11 and use the projector from your PC.

4.1 Installing the EPS player Program

a. Running the setup program

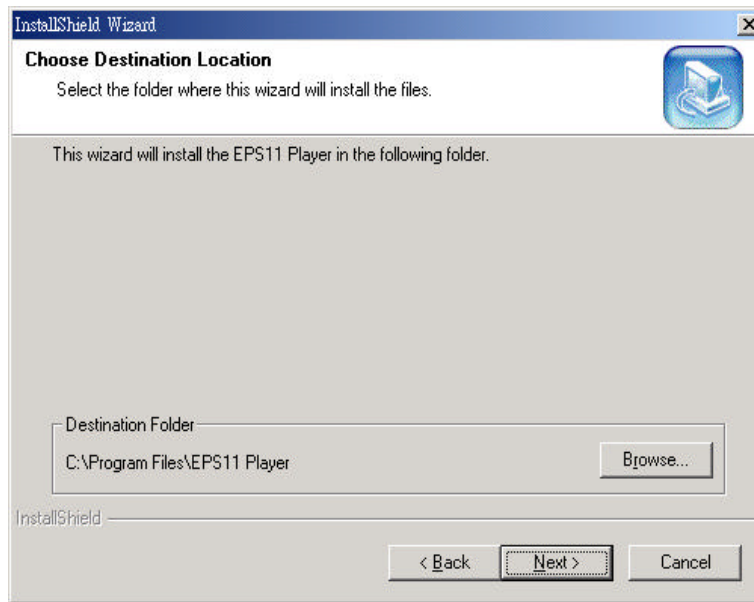
A copy of the client setup program, EPSsetup.exe, is included on the accompanying CD-ROM that comes with the EPS unit. Double-click on the EPSsetup.exe file to open the **Installation Wizard**.

- (i) On the **Welcome** window, click the **Next** button.

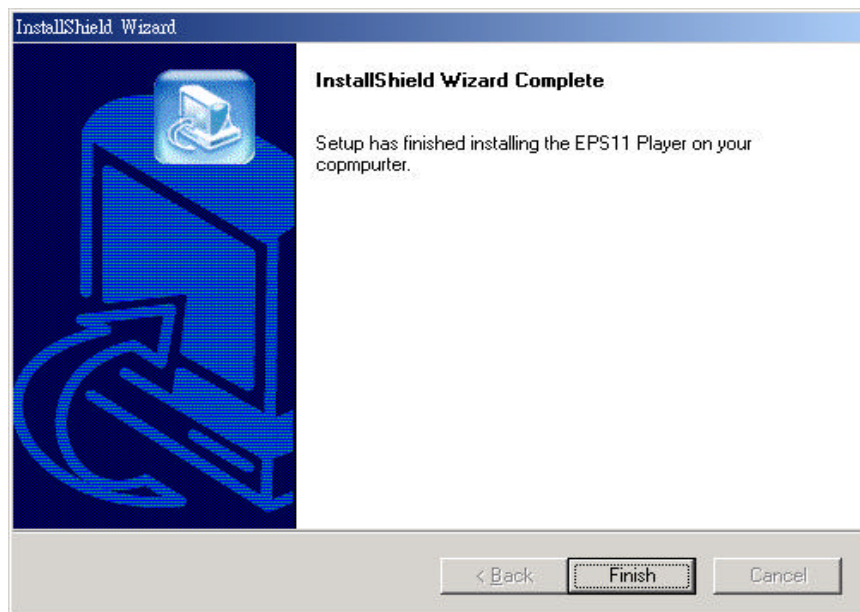



- (ii) On the **Choose Destination Location** window, change the default installation directory if needed, and click the **Next** button.

EPS player program and library files will now be copied into the installation directory, and it may take several minutes to complete.




(iii) On the **Installation Completed** window, click the **Finish** button to complete the setup process.



(iv) When the installation is completed, a shortcut  will be created on the desktop. You can double-click this shortcut to run the “**EPS player**” program.

Please read Section 2 for more information on EPS player.

4.2 Running the EPS player

- (i) Double-click the icon  on the desktop to run the “EPS player” program.
- (ii) On the **Welcome !** window, check the [Only use Ad-Hoc mode](#) checkbox to make EPS player connect to the EPS unit in Ad-Hoc mode. Uncheck this box to keep the player’s original setting.

When done, click the [Next](#) button to proceed.



- (iii) The EPS player is now searching for every EPS unit on the network. The search may take several seconds. If at least one EPS is found, the **Presentation Station Found** window (Graph 1) is displayed. Proceed to step (iv) continue the setup.

If no EPS is found, the **Presentation Station Couldn't be found** window is shown (Graph 2). You can click the [Search Again](#) button to searching over or click the [Exit](#) button to end the player program.



(Graph 1)



(Graph 2)

(iv) On the **Presentation Station Found** window, click the **EPS Selection** ▾ combo box button to select the EPS station of your choice.

Then click the **Next** button to proceed.

(The player is now configuring the selected EPS based on your EPS player's network setting. If configuration is completed, the EPS player will show the **Presentation Options** window (Graph 3). Otherwise, the **Presentation Station Couldn't be found** window is shown.)



(Graph 3)

The display of the **Presentation Options** window indicates the connection with EPS is active. You can do a presentation using the EPS player at this point.

(v) The **Presentation Options** UI has several control items that control the behaviors of the EPS presentation. Functionality of each is described below.

High Speed Transfer (Less Color) item

Choose this item to make your on-screen presentation less colorful (auto color degradation), but the data transfer speed faster.

Low Speed Transfer (More Color) item

Choose this item to make your on-screen presentation more colorful, but the data transfer speed slower.

Take Control of the Presentation Station button

Click this button to start presentation.

Give Control to Another User button

Click this button to give up presentation.

Exit button

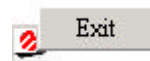
Click this button to exit the EPS player program.

4.3 Context menu and Hot-keys

When the EPS player is executed, a tray icon will be created on the taskbar. Users can right-click on this icon to invoke its context menu. Depending on the status of the player's connection to the EPS11 at the time, different context menus are displayed.

Context Menu:

Select **Exit** item to exit the EPS player.



Hot-keys

When the **Presentation Options** window (Graph 3) is up, you can press [Alt + F12] to start presenting or press [Alt + F12] again to stop the presentation.

5. Troubleshooting

There is no EPS11 Client Utility on your PC

Please insert the Installation Disc of EPS11 and click the **Setup** button. The Installation Wizard should automatically install the client utility and place a shortcut on your desktop. Double-click this shortcut to begin desktop image presentation.

Clients Cannot Find the EPS11

Please check if the wireless device in your PC or Notebook is active, pull and plug your wireless device, and then run the EPS11 client utility to search for the EPS11 again. If the EPS11 still cannot be found, please configure your network based on the setting shown on the EPS11's welcome screen. (Of course they must be in the same subnet and their IP addresses must be different.) After reconfiguring your network, run the EPS11 client utility again.

Desktop Image Not Displayed on Projector

Check if the VGA cable firmly connects EPS11 and the projector. If the configuration status of the client's EPS11 connection software is lit green but nothing is being displayed on the projector, try to verify if the projector is still functioning. The situation may also happen when the wireless connection quality becomes very poor. Try to reconnect the EPS11 in Ad-Hoc mode (You may select the option in the first dialog of EPS11 client utility) or change the position of the EPS11 to achieve a better wireless network connection quality.

Image Displaying is too Slow

Try to reconnect the EPS11 in Ad-Hoc mode (You may select this option in the first dialog of the EPS11 client utility) or change the position of the EPS11 to achieve a better wireless connection quality. In addition, change the display mode to **High Speed** (EPS11 client's software will downgrade color automatically, and there is no need to adjust your monitor's displaying mode) and it should greatly improve the displaying performance.

Specifications

Product Name : Wireless Presentation Gateway

Model Name : WX-2301, WPG11 FCC ID: PKW-WPG11

Country to be certified: FCC ID grant, CE certification

Items	Contents
1. Modulation type	DSSS
2. How to move out the modulation	Software Control
3. Number of channels	Default: 11, Europe: 13
4. Carrier frequency of each channel	2412, 2417, 2422, 2427, 2432, 2437, 2442, 2447, 2452, 2457, 2462, 2467, 2472MHz
5. Bandwidth of each channel	5 MHz
6. IF & L.O. frequency	IF=374 MHz, L.O.=2038 2098 MHz
7. Transmitter or Transceiver	Transceiver
8. Power Rating (DC or AC, ? Volt)	5V/1000mA
9. Maximum output power to Antenna	15 dBm
10. Duty Cycle	100%
11. Basic function of product	802.11b Wireless LAN
12. Operation Temperature	0 55
13. Antenna Connector Type	Detachable Antenna
14. Antenna Type	Dipole Antenna