

# **Instant Wireless - Network USB Adapter**

**User Manual**

### Regulatory compliance

#### FCC Warning

This equipment has been tested and found to comply with the limits for a Class B digital device, pursuant to part 15 of the FCC Rules. These limits are designed to provide reasonable protection against harmful interference in a residential installation. This equipment generates, uses and can radiate radio frequency energy and, if not installed and used in accordance with the instructions, may cause harmful interference to radio communications. However, there is no guarantee that interference will not occur in a particular installation. If this equipment does cause harmful interference to radio or television reception, which can be determined by turning the equipment off and on, the user is encouraged to try to correct the interference by one or more of the following measures:

- Reorient or relocate the receiving antenna.
- Increase the separation between the equipment and receiver.
- Connect the equipment into an outlet on a circuit different from that to which the receiver is connected.
- Consult the dealer or an experienced radio/TV technician for help.

You are cautioned that changes or modifications not expressly approved by the party responsible for compliance could void your authority to operate the equipment.

#### FCC Radiation Exposure Statement

This equipment complies with FCC radiation exposure limits set forth for an uncontrolled environment.

This equipment should be installed and operated with minimum distance 20cm between the radiator & your body.

### About this manual

This user manual describes how to install and operate your Instant Wireless - Network USB Adapter. Please read this manual before you install the product.

This manual includes the following topics:

- Product description and features.
- Hardware installation procedure.
- Software installation procedure.
- Product Specification

## ***Table of Contents***

### ***Section 1***

<b>Introduction</b>	4
1.1 Package Contents	4
1.2 System Requirements	4
1.3 Features	4

### ***Section 2***

<b>Hardware Installation</b>	6
2.1 Connecting the USB Adapter	6
2.2 Status LEDs	6
2.3 Remove the USB Adapter	6

### ***Section 3***

<b>Installation and Configuration Procedures Under Windows 98</b>	7
3.1 What You Need to Know About Windows 98	7
3.2 What You Will Need	7
3.3 Installing the Driver Under Windows 98	7
3.4 Configuration Under Windows 98	11
3.5 Uninstall Procedure Under Windows 98	12

### ***Section 4***

<b>Installation and Configuration Procedures Under Windows 2000</b>	13
4.1 What You Need to Know About Windows 2000	13
4.2 What You Will Need	13
4.3 Installing the Driver Under Windows 2000	13
4.4 Configuration Under Windows 2000	17
4.5 How to Unplug the Device Under Windows 2000	18
4.6 Uninstall Procedure Under Windows 2000	19

### ***Section 5***

<b>Installation and Configuration Procedures Under Windows ME</b>	20
5.1 What You Need to Know About Windows ME	20
5.2 What You Will Need	20
5.3 Installing the Driver Under Windows ME	20
5.4 Configuration Under Windows ME	21
5.5 Uninstall Procedure Under Windows ME	22

### ***Section 6***

<b>Configuration and Monitor Application</b>	23
6.1 How to Install the Configuration and Monitor Application	23
6.2 Using the Configuration and Monitor Application	23

6.3 How to Uninstall the Configuration and Monitor Application 28

***Appendix A***  
**Specification** 29

## Section 1 - Introduction

The Instant Wireless - Network USB Adapter is a network adapter with a rate of 1, 2, 5.5, and 11 Mbps operating in the ISM band using Direct Sequence Spread Spectrum (DSSS) transmission implementing the IEEE 802.11b standard. This adapter provides Device Drivers for MS Windows ® 98, Windows ® 2000 and Windows ® ME. It also provides tools for the configuration and firmware upgrade of the adapter. These tools, as well as the installation steps of the plug-and-play procedure for the Microsoft Windows 98, Windows ME and Windows 2000 operating systems, are described in this document.

### 1.1 Package Contents

Please make sure that items below are included on package.

- A Instant Wireless - Network USB Adapter
- A USB cables
- CD-ROM (include Device Drivers and User Manual)
- A Quick Installation Guide

### 1.2 System Requirements

- Operating System: MS Windows 98, Windows 2000, Windows ME
- Desktop PC or notebook PC with CD-ROM drive
- One free USB port

### 1.3 Features

The Instant Wireless - Network USB Adapter offers compliance with the IEEE 802.11b specification. This feature allows them to communicate with other wireless devices that support the standard. Features of the adapter are:

- **Uses 2.4GHz frequency band, which complies with worldwide requirement**
- **Wireless interface following the IEEE 802.11b standard**
- **Using Universal Serial Bus (USB) interface**
- **Enciphering/deciphering of wireless data by the implementation of the WEP algorithm (WEP-40 bits)**
- **Wire-free access to networked resources from anywhere beyond the desktop**
- **Allows users move between Access Points without resetting their connection reconfiguration**
- **Delivers data rate up to 11 Mbps**
- **Supports 11, 5.5, 2, and 1 Mbps rates**

- **Roaming**
- **Provide Instant Wireless - Network Configuration utility**
- **Dielectric Antenna is built in to the Adapter with LEDs indicating Power and Link**
- **Supports most popular operating systems: Window 98/2000 & Windows ME**

## Section 2 - Hardware Installation

This chapter covers connecting your Instant Wireless - Network USB Adapter to USB port of desktop or notebook PC, and connecting the Adapter to a network.

### 2.1 Connecting the USB Adapter

Follow the procedure below to install the Adapter.

1. Connect one end of USB cable into the Adapter.
2. Connect the other end of USB cable to USB port on desktop or notebook PC.

### 2.2 Status LEDs

The following table describes the meaning of the LEDs:

LED	MEANING
PWR	Indicates that the Card is powered on.
ACT	Indicates link status. It is normally blinking. When blinking, indicates that the card is scanning the channels, and the link is not active. When lit, indicates that the card is locked to a channel, and the link is active.

### 2.3 Remove the USB Adapter

For the Adapter supports **Hot Swapping** feature. With this feature, you can remove and reconnect the Adapter whenever you want.

## Section 3 - Installation and Configuration Procedures Under Windows 98

Use the procedures described in this chapter to install and configure the Instant Wireless - Network USB Adapter under MS Windows 98.

### 3.1 What You Need to Know About Windows 98

Throughout this section it is assumed that you have a basic working knowledge of Windows 98 and of how to install new network cards on them. However, in this paragraph, some specific features of Windows 98 are briefly explained.

Windows 98 operating system supports the **Plug & Play** feature. That means that once you connect the Adapter to your PC for the very first time, this operating system will detect the Adapter and prompt you to install the driver.

Another feature is the **Hot Swapping**. With this feature, you can remove and reconnect the Adapter whenever you want.

### 3.2 What You Will Need

During the installation, you may be prompted to load operating system files from the Windows installation disk. Please have this disc handy.

You will also need the Drivers and Software Tools CD provided with your package.

### 3.3 Installing the Driver Under Windows 98

1. Plug the Adapter into the USB port of a notebook or desktop PC.
2. The Add New Hardware Wizard will indicate that Windows have recognized a new network device that has not been used before.





3. Click **Next** to continue the installation. A screen appears prompting you to select an installation method:



4. Select **Search for the best driver for your device. (Recommended)** and click **Next**. The following screen appears:

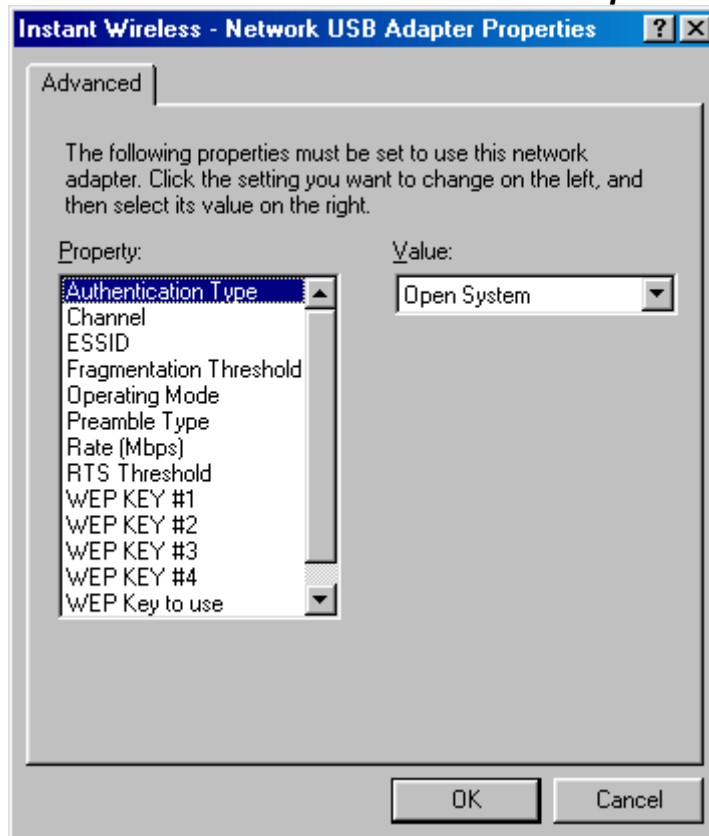


5. Ensure that the **CD-ROM drive** box is checked.
6. Insert the Drivers and Software Tools CD into your CD-ROM drive and click **Next**. The following screen appears:



7. Click **Next** to continue.
8. Under Windows 98, you will have the chance to set up Instant Wireless - Network USB Adapter operational parameters during the installation of the Adapter. Please note that you can change these parameters later (for more details see the Configuration Under Windows 98 paragraph).

**Figure 3-1. Instant Wireless - Network USB Adapter Properties**



You can set the following USB operational parameters:

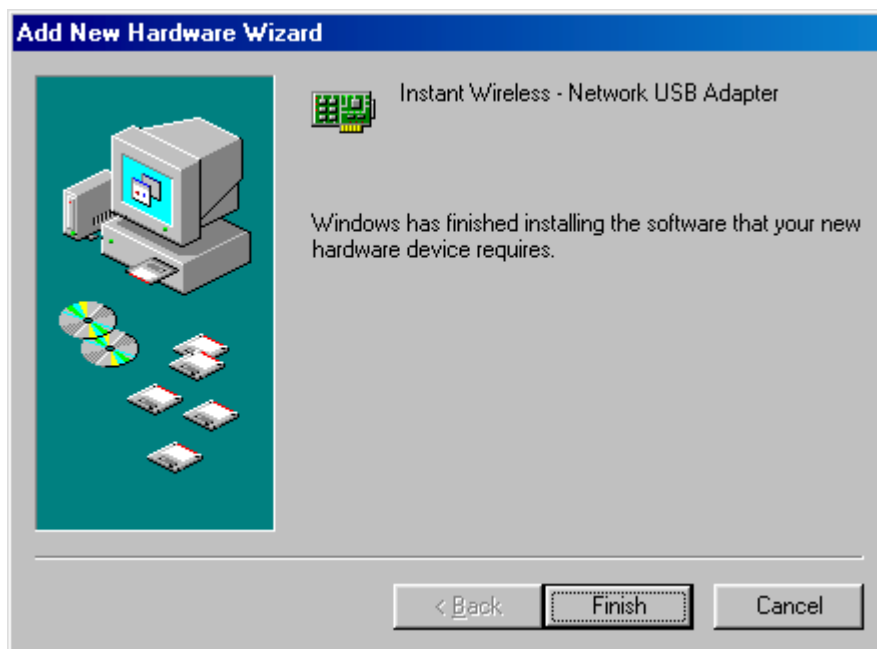
- Channel: Select the channel to be used. There are 11 channels available.
- ESSID: Select the ESSID to be used. The ESSID can be either the ESSID of the access point to which the station will be associated if in infrastructure mode, or the ESSID of the ad-hoc network in case the station will operate in ad-hoc mode. In the latter case, all stations participating in the ad-hoc network should have the same ESSID.
- Fragmentation Threshold: This is the option for the Fragmentation Threshold activation.
- Network Address: This is a unique MAC address.
- Operating Mode: Infrastructure or ad-hoc.
- Preamble Type: Select either **Long**, or **Short** Preamble Type.
- Rate: Select the rate to be used among the following options: 1 Mbps, 2 Mbps, 5.5 Mbps and 11Mbps.
- RTS Threshold: This is the option for the RTS Threshold activation.
- WEP Key: Select which of the 4 WEP keys is going to be used. You can select **None** if you do not need WEP encryption.
- WEP KEY #1 - #4 : You can set the value of 4 different WEP keys.

For every station participating in a Network the user must select the same Channel and Rate (1, 2, 5.5, or 11 Mbps) but a different Network Address (MAC Address). Also the user can set the Fragmentation Threshold (the threshold for the activation of the fragmentation mechanism), as well as the

RTS threshold (the threshold for the activation of the RTS/CTS mechanism). Also, the user can select the operating Mode. Two modes are available: Ad-Hoc Mode and Infrastructure Mode. In Ad-Hoc Mode the wireless stations can directly communicate, however, in Infrastructure Mode, an Access Point is necessary. The user can also specify the ESSID (up to 32 characters). The ESSID field is case sensitive. The user can select long or short preamble as referred in 802.11b specification. Finally, the user can select among four user-defined WEP keys for encryption e.g. by setting the WEP Key To Use field to 3, the WEP KEY #3 will be used; by setting it to **None**, no WEP encryption will be used.

Please keep in mind that the WEP keys must be in HEX and in two characters per byte formats e.g. if you want the WEP KEY #1 to be 12345, then you must set it as 0102030405.

9. Windows 98 copies files to your hard disk drive, and you see the following screen:



10. Click **Finish** to complete the installation.
11. When Windows ask you if you want to restart your system now, press **No** in the dialog box and restart you system manually. If you press **Yes**, it is possible that the installation will not be completed (this is an operating system related problem).

### 3.4 Configuration Under Windows 98

**Note:** The following procedure applies to the configuration of the cards when they are not running. In case a communication has been established, the configuration parameters of the adapter can be changed **on the fly** by using the

Configuration and Monitor Application described in the section Configuration and Monitor Application.

After you have installed the Adapter, you can easily change its configuration through the Control Panel (Start -> Settings -> Control Panel), where you select the **Network** icon and then the **Instant Wireless - Network USB Adapter** card in the Configuration tab.

With the Instant Wireless - Network USB Adapter card highlighted press the **Properties** button or double-click on the highlighted icon in order to configure the Adapter. In the new window, select the **Advanced** tab and adjust the operational parameters of the card. This tab is the same with the one that appeared during the installation (Figure 3-1). Please check the paragraph Installing the Driver Under Windows 98 for details about the configuration parameters.

Please note that in order for any change in these parameters to take effect, the computer must be restarted. Windows will prompt you to restart the computer.

### 3.5 Uninstall Procedures Under Windows 98

In order to uninstall the Adapter from Windows 98, you must double click on the **Network** option in the **Control Panel** (Start -> Settings -> Control Panel). Select the Instant Wireless - Network USB Adapter card from the list and press the **Remove** button. The system will prompt you to re-boot. Press **Yes** to re-boot.

## Section 4 - Installation and Configuration Procedures Under Windows 2000

Use the procedures described in this chapter to install and configure the Instant Wireless - Network USB Adapter under MS Windows 2000.

### 4.1 What You Need to Know About Windows 2000

Throughout this section it is assumed that you have a basic working knowledge of Windows 2000 and of how to install new network cards on them. However, in this paragraph, some specific features of Windows 2000 are briefly explained.

Windows 2000 operating system supports the **Plug & Play** feature. That means that once you plug the Adapter into your PC for the very first time, this operating system will detect the card and prompt you to install the driver.

Another feature is the **Hot Swapping**. With this feature, you can remove and re-insert the Adapter whenever you want.

### 4.2 What You Will Need

During the installation, you may be prompted to load operating system files from the Windows installation disk. Please have this disc handy.

You will also need the Device Drivers and Software Tools CD provided with your package.

**Note:** In order to be able to install the Adapter on to your PC running under Windows 2000, you will need to log on as **Administrator**.

### 4.3 Installing the Driver Under Windows 2000

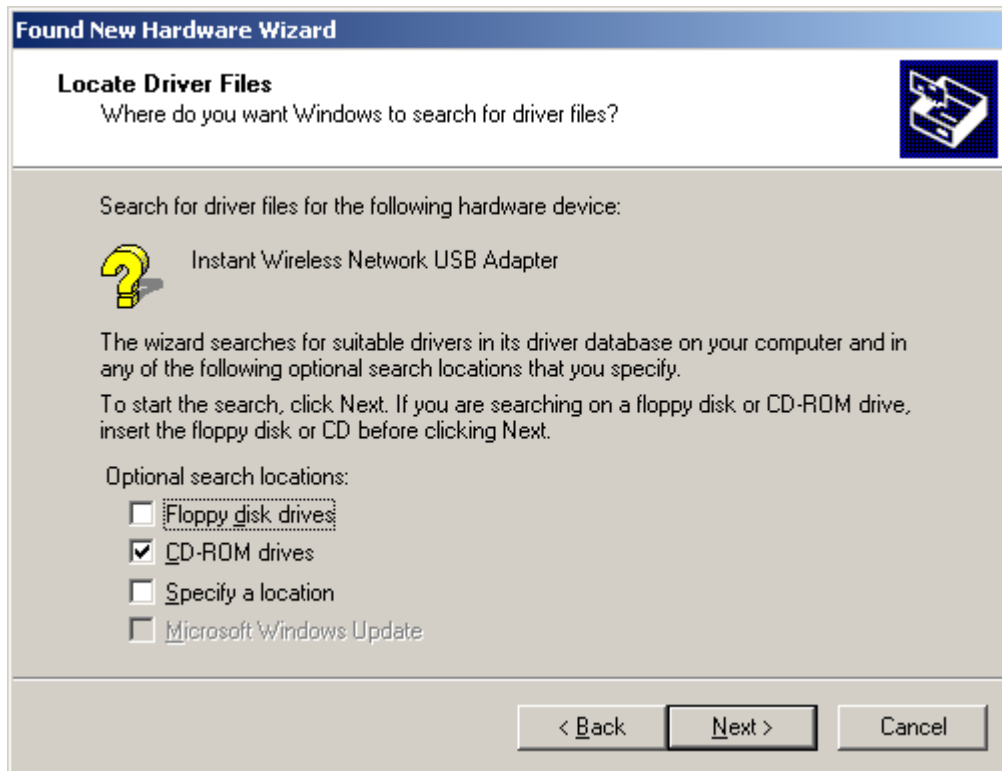
1. Plug the Adapter into the USB port of a notebook or desktop PC.
2. The Found New Hardware Wizard will indicate that Windows have recognized a new network device that has not been used before.



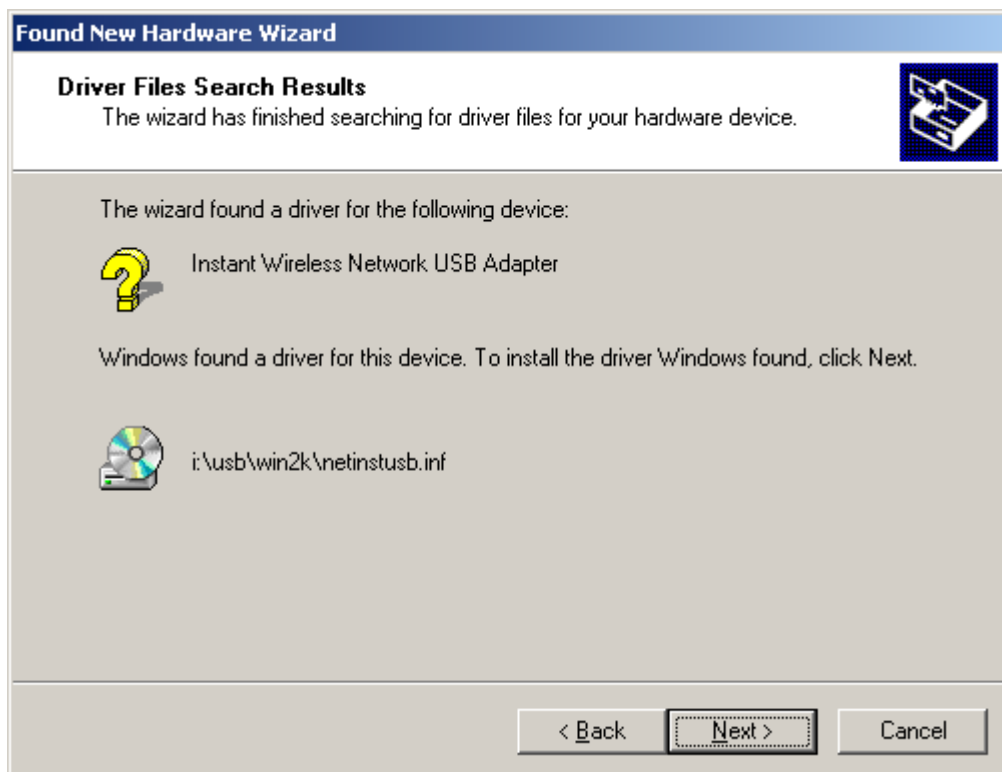
3. Click **Next** to continue the installation. A screen appears prompting you to select an installation method:



4. Select **Search for a suitable driver for my device (recommended)** and click **Next**. The following screen appears:

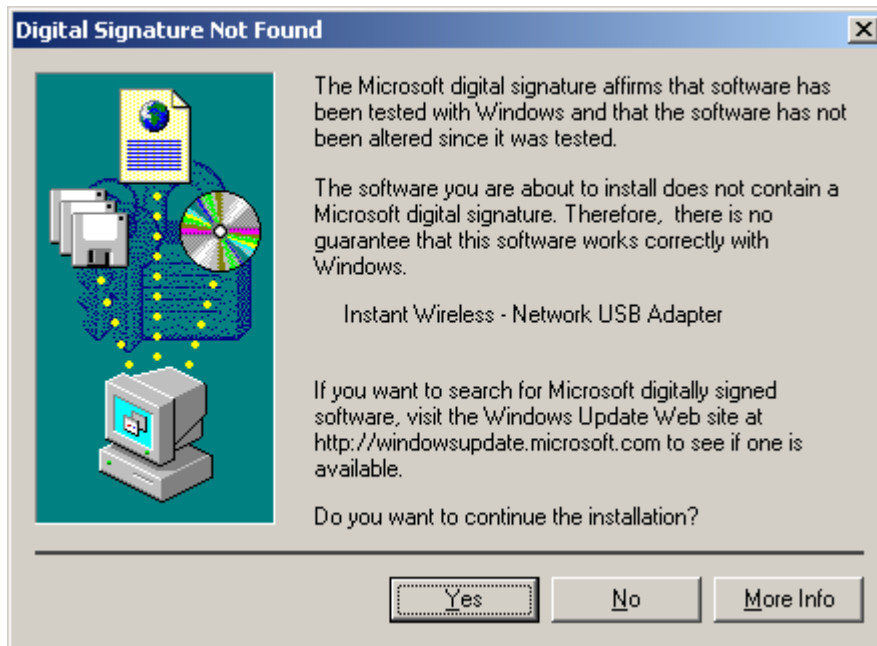


5. Ensure that the **CD-ROM drivers** box is checked and insert the driver disc into CD-ROM drive. Click **Next** to continue. The following screen appears:

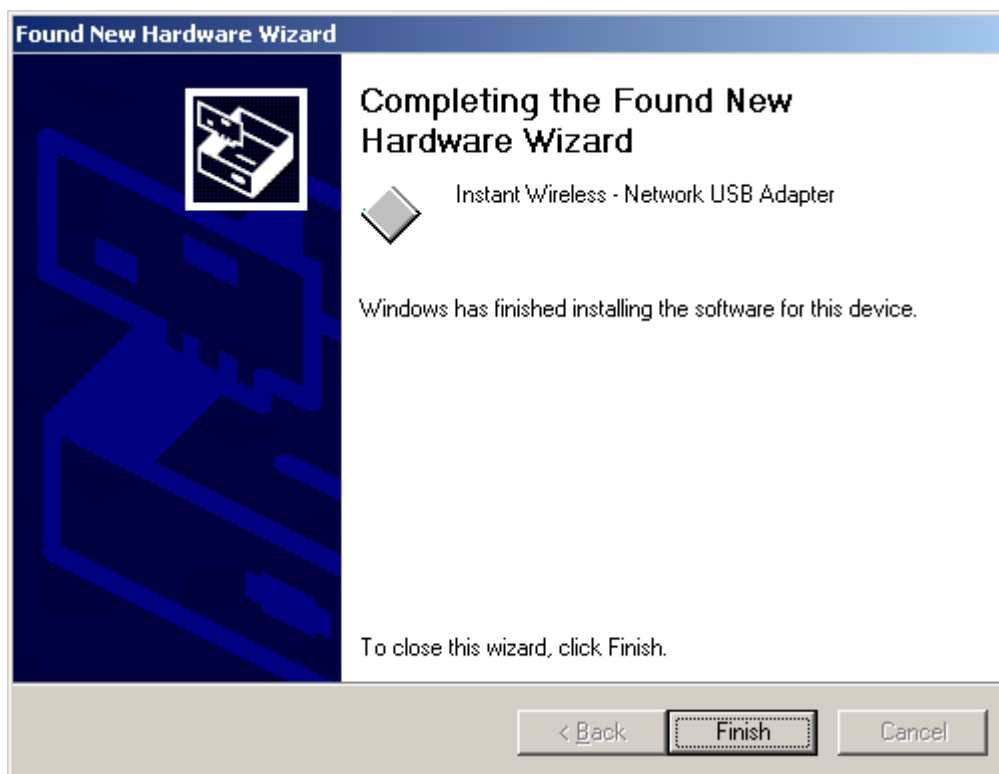


6. Click **Next** to continue.





7. Windows may display the message **Digital Signature Not Found**. Ignore it by pressing **Yes**. Windows will start copying the files and then the following screen appears:



8. Click **Finish** to complete the installation.

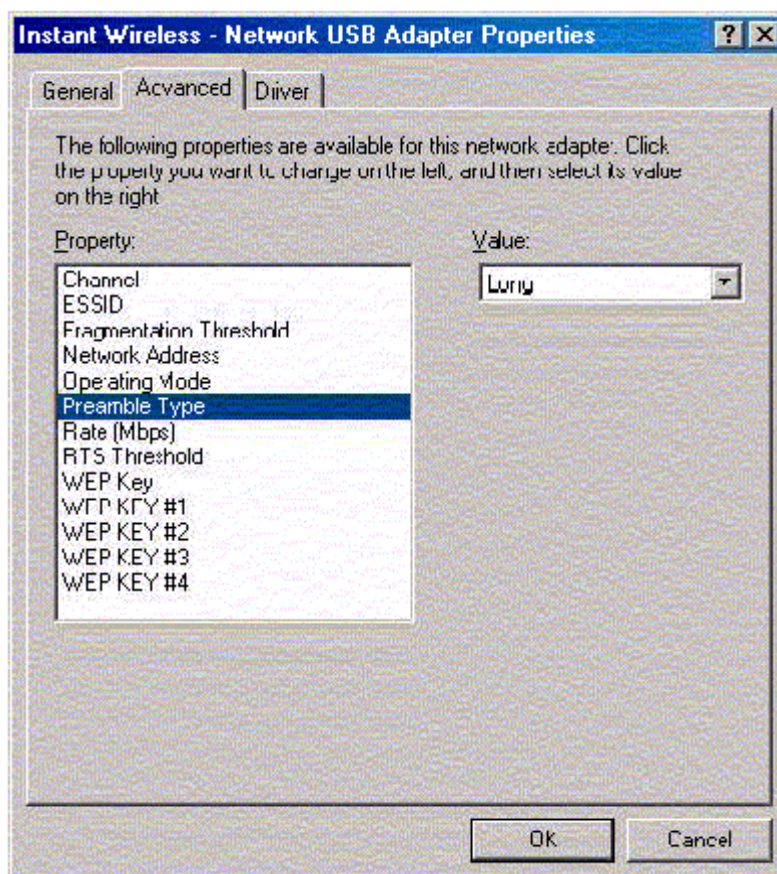
## 4.4 Configuration Under Windows 2000

**Note:** The following procedure applies to the configuration of the cards when they are not running. In case a communication has been established, the configuration parameters of the adapter can be changed **on the fly** by using the Configuration and Monitor Application described in the section Configuration and Monitor Application.

You can use the standard configuration method for network cards of Windows 2000 by going to **My Network Places** and double click on the Adapter. Press **Properties** in the **Local Area Connection Status** dialog.

In the **Local Area Connection Properties** dialog, press **Configure** in order to configure the card. You can configure the parameters shown in the Figure 4-1. After you have made your changes, you must restart your system for the new parameters to take effect.

**Figure 4-1. Instant Wireless - Network USB Adapter Properties**



You can set the following USB operational parameters:

- Channel: Select the channel to be used. There are 14 channels available.
- ESSID: Select the ESSID to be used.
- Fragmentation Threshold: This is the option for the Fragmentation Threshold activation.

- Network Address: This is a unique MAC address.
- Operating Mode: Infrastructure or ad-hoc.
- Preamble Type: You can select long or short preamble
- Rate: Select the rate to be used among the following options: 1 Mbps, 2 Mbps, 5.5 Mbps and 11Mbps.
- RTS Threshold: This is the option for the RTS Threshold activation.
- WEP Key: Select one of the four available keys to be used for encryption. When no key is selected, the encryption is disabled.
- WEP KEY #1 - #4 : Set the value of the WEP key.

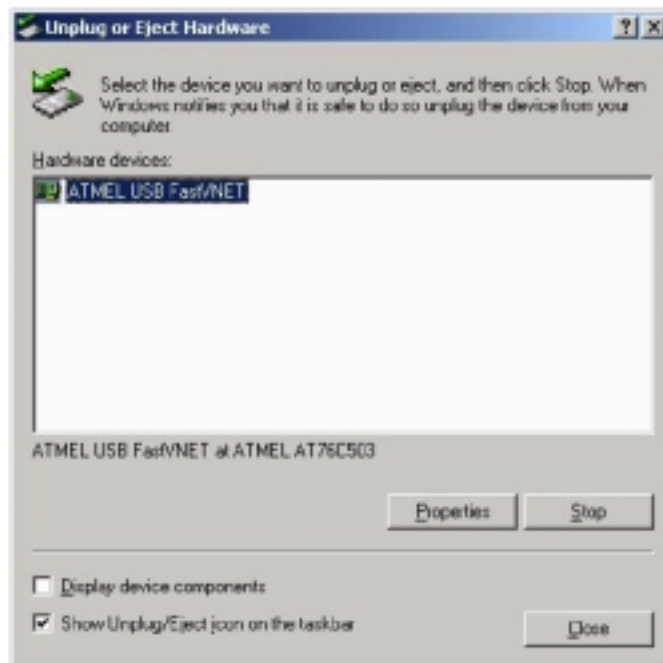
For every station participating in a Network the user must select the same Channel and Rate (1, 2, 5.5, or 11 Mbps) but a different Network Address (MAC Address). Also the user can set the Fragmentation Threshold (the threshold for the activation of the fragmentation mechanism), as well as the RTS threshold (the threshold for the activation of the RTS/CTS mechanism). Also, the user can select the operating Mode. Two modes are available: Ad-Hoc Mode and Infrastructure Mode. In Ad-Hoc Mode the wireless stations can directly communicate, however, in Infrastructure Mode, an Access Point is necessary. The user can also specify the ESSID (up to 32 characters). The ESSID field is case sensitive. The user can select long or short preamble as referred in 802.11b specification. Finally, the user can select among four user-defined WEP keys for encryption e.g. by setting the WEP Key To Use field to 3, the WEP KEY #3 will be used; by setting it to **None**, no WEP encryption will be used. Please keep in mind that the WEP keys must be in HEX and in two characters per byte formats e.g. if you want the WEP KEY #1 to be 12345, then you must set it as 0102030405.

### 4.5 How to Unplug the Device Under Windows 2000

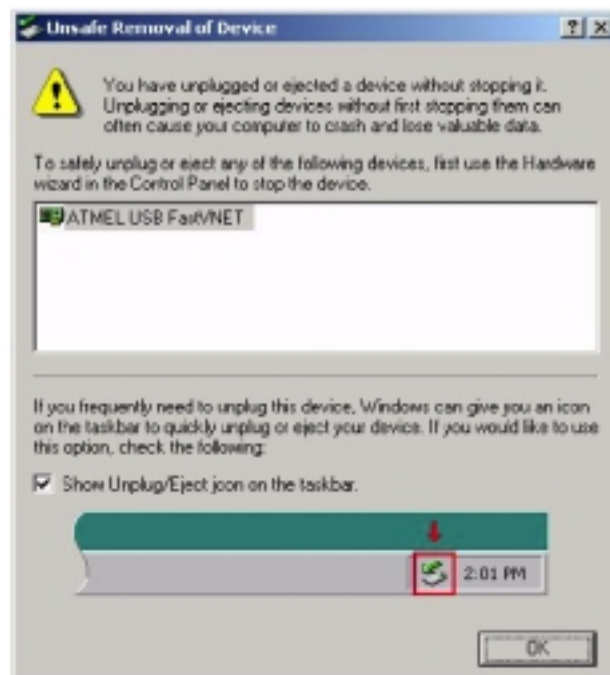
After the successful installation of the Adapter, you will see an icon corresponding to the device in the Windows taskbar for as long as the device is connected to the PC (see the lower part of Figure 4-3). If you want to unplug the device double click on this icon. The dialog of Figure 4-2 will appear where you must press **Stop**. Now it is safe to unplug the device from the PC.

In case you unplug the device without having followed the above procedure the dialog of Figure 4-3 will appear reminding you the problems this action may have caused. Press **OK**. It is recommended not to unplug the device unless you have followed first the above procedure to stop the card.

*Figure 4-2. Stop card dialog*



*Figure 4-3. Unsafe removal notification*



## 4.6 Uninstall Procedures Under Windows 2000

In order to uninstall the Adapter you must select it in the Device Manager of Windows 2000 and press **Uninstall**. The **Uninstall** procedure can be performed only if the Adapter is plugged-into your computer.

## Section 5 - Installation and Configuration Procedures Under Windows ME

Use the procedures described in this chapter to install and configure the Instant Wireless - Network USB Adapter under MS Windows ME

### 5.1 What You Need to Know About Windows ME

Throughout this section it is assumed that you have a basic working knowledge of Windows ME and of how to install new network cards on them. However, in this paragraph, some specific features of Windows ME are briefly explained.

Windows ME operating system supports the **Plug & Play** feature. That means that once you connect the Adapter to your PC for the very first time, this operating system will detect the Adapter and prompt you to install the driver.

Another feature is the **Hot Swapping**. With this feature, you can remove and reconnect the Adapter whenever you want.

### 5.2 What You Will Need

During the installation, you may be prompted to load operating system files from the Windows installation disk. Please have this disc handy.

You will also need the Drivers and Software Tools CD provided with your package.

### 5.3 Installing the Driver Under Windows ME

1. Plug the Adapter into the USB port of a notebook or desktop PC.
2. The Add New Hardware Wizard will indicate that Windows have recognized a new network device that has not been used before



3. Select **Automatic search for a better driver (Recommended)** and insert the Drivers and Software Tools CD into CD-ROM drive. Click **Next** to continue.
4. The system will find the setup files and follow the instruction of the setup file to copy drivers. After the drivers were copied, the following screen appears:



5. Click **Finish**. You should reboot your system to finish the installation.

## 5.4 Configuration Under Windows ME

**Note:** The following procedure applies to the configuration of the cards when

they are not running. In case a communication has been established, the configuration parameters of the adapter can be changed **on the fly** by using the Configuration and Monitor Application described in the section Configuration and Monitor Application.

After you have installed the Adapter, you can easily change its configuration through the Control Panel (Start -> Settings -> Control Panel), where you select the **Network** icon and then the Instant Wireless - Network USB Adapter card in the Configuration tab.

With the Instant Wireless - Network USB Adapter card highlighted press the **Properties** button or double-click on the highlighted icon in order to configure the Adapter. In the new window, select the **Advanced** tab and adjust the operational parameters of the card. This tab is the same with the one that appeared during the installation (Figure 3-1). Please check the paragraph Installing the Driver Under Windows ME for details about the configuration parameters.

Please note that in order for any change in these parameters to take effect, the computer must be restarted. Windows will prompt you to restart the computer.

### 5.5 Uninstall Procedures Under Windows ME

In order to uninstall the Adapter from Windows ME, you must double click on the **Network** option in the **Control Panel** (Start -> Settings -> Control Panel). Select the Instant Wireless - Network USB Adapter card from the list and press the **Remove** button. The system will prompt you to re-boot. Press **Yes** to re-boot.

## Section 6 - Configuration and Monitor Application

The Configuration and Monitor Application is a powerful utility that helps you to configure the Adapter and monitor the statistics of the communication. Unlike the standard method of configuring the Adapter via the operating system utilities (e.g. Control Panel), this application permits the dynamic modification of the configuration parameters while the Adapter is operating. It also offers some more configuration options.

The Adapter offers the Configuration and Monitor Application for Windows 98, Windows 2000 and Windows ME.

**Note:** Please keep in mind that the Configuration and Monitor Application can be used to change the above configuration parameters when the Adapter is active. When the Adapter is not in use, please use the Control Panel method described in previous sections.

### 6.1 How to Install the Configuration and Monitor Application

In order to setup the Configuration and Monitor Application, run the program **SETUP.EXE**, which you will find in the **Config\_Utility** folder of your installation CD and follow the instructions as they appear on the screen. As soon as a link is established, the application will start running and will appear as an icon on the system tray. You can locate the application under **Start -> Programs -> Instant Wireless - Network -> Instant Wireless - Network USB Adapter Configuration**.

### 6.2 Using the Configuration and Monitor Application

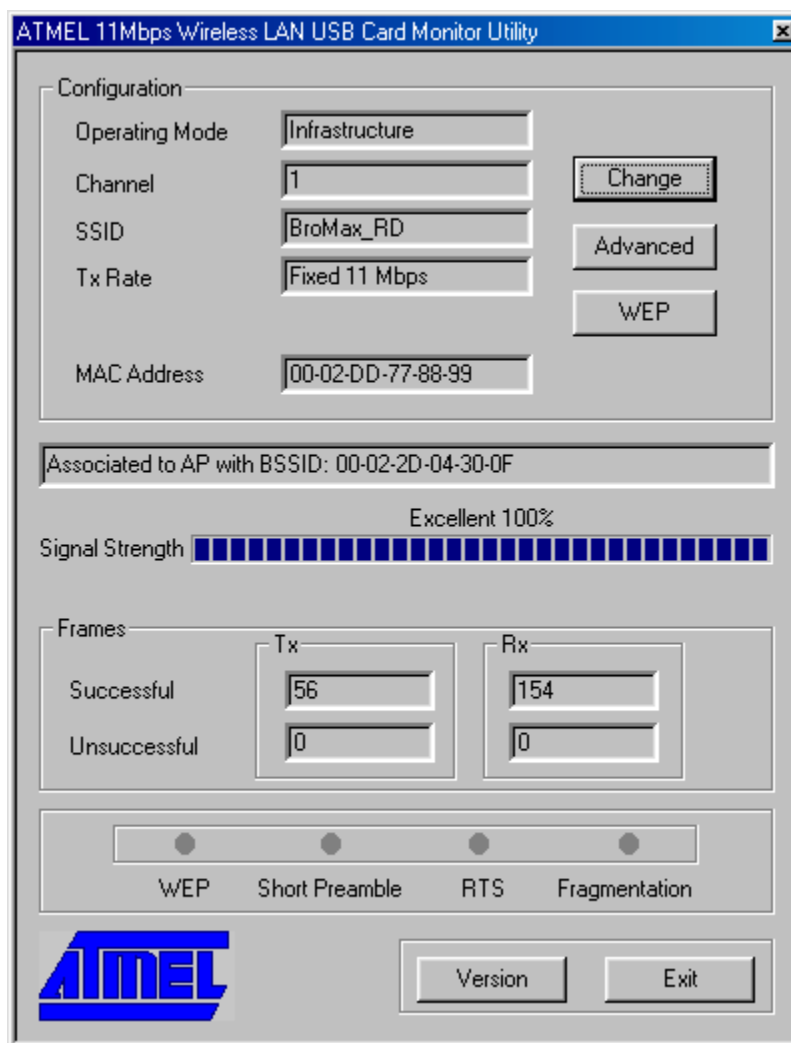
The Configuration and Monitor Application appears as an icon on the system tray of Windows every time the Adapter is running. You can open it by double-clicking on this icon. While the station is in infrastructure mode and not associated to an access point, the color of the icon is red. As soon as the station associates itself to an access point, the icon color turns to blue. In ad-hoc mode the color is always blue, except when the card is resetting where it turns to red during the reset procedure.

A typical screen of the application in infrastructure mode is shown in Figure 6-1. The configuration parameters are shown at the top of the screen, while the statistics of the communication are shown at the bottom. In the middle of the screen there is information about which Access Point the Adapter is associated with, the address of the AP, its SSID and the channel. The four LEDs at the



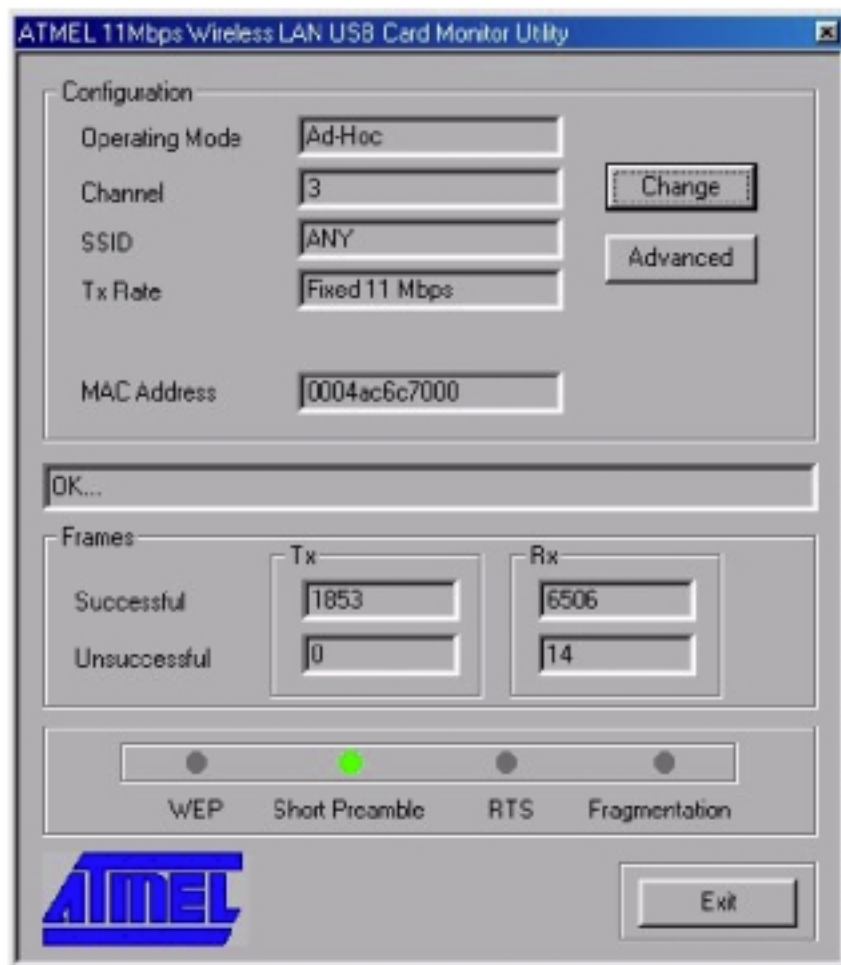
bottom of the dialog box indicate which of these features are enabled.

**Figure 6-1. A typical screen of the Configuration and Monitor Application in infrastructure mode.**



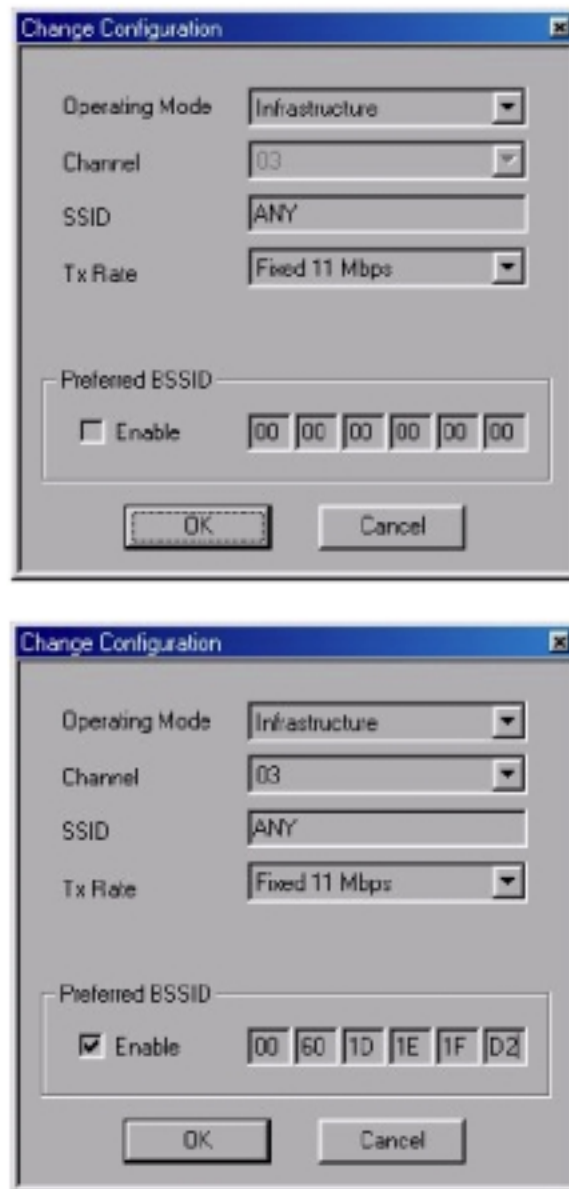
A similar screen appears in case the Adapter operates in ad hoc. In this case, Short Preamble has been enabled (Figure 6-2).

*Figure 6-2. A typical screen of the Configuration and Monitor Application in ad-hoc mode.*



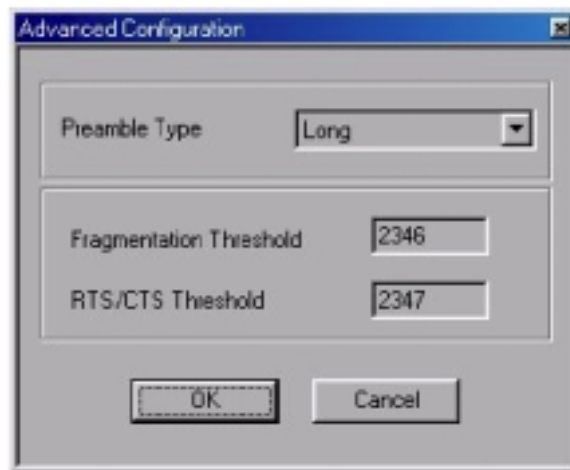
By pressing the **Change** button in any of the two modes, you can change basic configuration settings such as the Operating Mode, Channel, SSID, and Transmission Rate (Figure 6-3). While in infrastructure mode you can select a preferred Access Point (AP) by checking the **Enable** check box and giving the MAC address of the AP. In that case you must also specify the channel the preferred AP is using.

**Figure 6-3. Change of basic configuration.**



By pressing the Advanced button in any of the two modes, you can change advanced configuration settings, such as the Preamble Type, Fragmentation Threshold, and RTS/CTS Threshold (Figure 6-4). Figure 6-4 shows the recommended configuration for the advanced settings. Before selecting Short Preamble, make sure that the other stations and APs are also supporting this feature.

*Figure 6-4. Change of advanced configuration settings.*



### **6.3 How to Uninstall the Configuration and Monitor Application**

In order to uninstall the Configuration and Monitor Application, go to Start -> Programs -> Instant Wireless - Network and select Uninstall Instant Wireless - Network USB Adapter.

## Appendix A – Specification

<b>PHYSICAL</b>	
<b>Type</b>	USB V1.0
<b>Standards</b>	IEEE802.11b WLAN Standard
<b>Antenna</b>	Dielectric Antenna (internal)
<b>RADIO</b>	
<b>Media Access Protocol</b>	IEEE802.11
<b>Frequency</b>	2.4 to 2.4835GHz (Industrial Scientific Medical Band)
<b>Channels</b>	11 Channels
<b>Data Rate</b>	11Mbps / 5.5Mbps / 2Mbps / 1Mbps
<b>Modulation Technique</b>	Direct Sequence Spread Spectrum BPSK / QPSK / CCK
<b>Coverage Area</b>	Closed Space : 25m @11Mbps , 100m @5.5Mbps or lower
<b>ELECTRICAL</b>	
<b>Bit Error Rate</b>	1E-5 @ -83dBm
<b>Output Power</b>	12dBm (typical)
<b>Receiver Sensitivity</b>	-80dBm Min.
<b>SOFTWARE</b>	
<b>Device Drivers</b>	Support Windows 98 / 2000 / ME
<b>Roaming</b>	802.11 compliant
<b>ENVIRONMENTAL</b>	
<b>Operating Temperature</b>	0° to 40°C
<b>Storage Temperature</b>	-25° to 70°C
<b>Relative</b>	10% to 90%