

Instant Wireless™ Series

Wireless USB Network Adapter



Use this Guide to install **WUSB11** ver2.6.

User Guide

LINKSYS®

Installation and Configuration of the USB Adapter for Windows

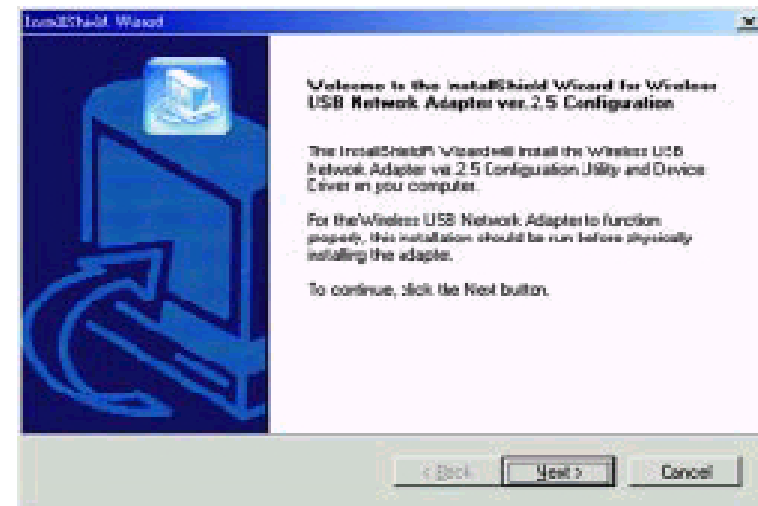
This Wireless USB Network Adapter Setup Utility will guide you through the Install and Uninstall Procedure for Windows 98, Millennium, 2000 and XP.

Insert the **Setup Utility CD** into your CD-ROM Drive. The Setup Utility should run automatically and the screen shown below should appear. If it does not, click the **Start** button and choose **Run**. In the box that appears, enter **D:\setup.exe** (where "D" is the letter of your CD-ROM drive).



- The **Install** tab begins the software installation process, as shown on the next page.
- The **Uninstall** tab shows you how to uninstall the adapter (please see the section titled **Uninstall Procedures** for more information).
- The **User Guide** tab shows you a PDF file of the User Guide.
- The **Contact Us** tab links you to the Linksys website.
- The **Exit** tab allows you to exit the Setup Utility.

1. To install your Wireless USB Network Adapter, click on the **Install** tab.
2. Once you see the following screen, click the **Next** button to continue.



3. After reading to the Warranty Policy, click the **Yes** button if you agree, or **No** to end the installation.

