

TeamPad500 System User's Guide

Revision 1.00.00

March 27, 2001

P/N 90000455



FUJITSU

Revision History

| Revision Number | Date | Description of Change |
|-----------------|----------|-----------------------|
| 1.00.00 | 2-1-2001 | Original Release |

Read this manual before using this product.

User's Guide

Thank you for purchasing the TeamPad 500 (referred to as the "equipment" in this document).

To ensure proper operation and satisfactory performance of this product, be sure to read this manual thoroughly before using this equipment.

Intention of the User's Guide

To document the functionality of the display screens that are unique to the equipment. This document is not intended to document Windows CE 2.12. It is assumed that the user has knowledge of the features and functionality of Windows CE.


Windows, Windows CE, Visual C++, and Visual Basic are registered trademarks of Microsoft Corporation in the U.S. and other countries.

Table of Contents

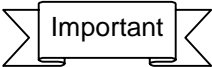
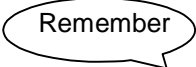
| | | |
|-------|--|----|
| 1 | Quick Start Checklist | 7 |
| 1.1 | Open the Package | 7 |
| 1.2 | Turn the Power On | 7 |
| 1.3 | Equipment Startup | 7 |
| 1.4 | Application Setup and Configuration | 7 |
| 1.5 | Run Installed Applications | 7 |
| 2 | Equipment Startup | 8 |
| 2.1 | Startup check | 8 |
| 2.2 | Touch Panel Calibration | 9 |
| 2.3 | Date and Time Settings | 10 |
| 3 | Application Setup and Configuration | 11 |
| 3.1 | Setup Menu | 11 |
| 3.2 | Control Panel | 12 |
| 3.2.1 | System Properties | 13 |
| 3.2.2 | Power Management Properties | 14 |
| 3.2.3 | Display Properties | 15 |
| 3.2.4 | Date and Time Properties | 16 |
| 3.2.5 | Screen Input Panel (SIP) Keyboard Size | 17 |
| 3.3 | Application Installation | 19 |
| 3.4 | TeamPad Configuration | 21 |
| 3.4.1 | Initialize Settings | 21 |
| 3.4.2 | Launcher Keys | 23 |
| 3.4.3 | Registry Backup and Restore | 25 |
| 3.4.4 | Combination Keys | 27 |
| 3.5 | Application Backup and Restore | 28 |
| 3.6 | Registry Editor | 30 |
| 3.7 | TeamPad Explorer | 32 |
| 3.8 | Run a Program | 35 |
| 3.9 | Debug Mode | 36 |
| 4 | Basic Operations | 37 |
| 4.1 | Turning on the backlight | 37 |
| 4.2 | Battery Status | 37 |
| 4.3 | Adjusting the Sound Volume | 39 |
| 4.4 | Touch Panel Calibration | 40 |
| 4.5 | Alpha Keyboard Pop-up | 41 |
| 4.6 | Low Main Battery Warning | 42 |
| 4.7 | Low Sub Battery Warning | 43 |
| 5 | Restoring the Application | 44 |
| 5.1 | Touch Panel Calibration | 45 |
| 5.2 | Date and Time Settings | 46 |
| 5.3 | Restore/Re-Initialize the Application | 47 |

Warnings

This manual uses various indications to urge the user to use the equipment safely, to prevent personal injury or property damage. Be sure to understand these indications and their meanings before continuing to read this manual.

| Symbol | Description |
|---|--|
|  | This alert signal also indicates that damage to the product or other property <i>may</i> occur if the user does not perform the procedure correctly. |

Other symbols

| Symbol | Description |
|--|---|
|  | This indicates precautions on use or what must not be done. Read the statement carefully. |
|  | Indicates advice or reference information. Read the statement when necessary. |

Screen and entry examples

The screen display examples are given purely as examples and apply to individual situations. Keep in mind that the actual screens may differ.

The data in the entry examples is given purely as example and applies to individual situations. Keep in mind that the actual data required for entry may differ.

Key notations

| Key | Meaning |
|----------------------------|--|
| PWR key | Use this key to turn the power to the equipment on or off (this key is called the power key in this document). |
| Numerical keys (0 to 9) | Use these keys to enter numbers |
| ENT key | Enter key. Use this key to confirm and execute operations. |
| Cursor keys | Use these keys to move the cursor in the desired direction. |
| CLR key | Use this key to cancel operations and clear data entries. |
| BKS key | Backspace key. |
| SFT key | Shift key. Use this key to perform shifted operations. |
| F1-F5 keys | Function keys. Use these keys to perform special operations. |
| * Key | Backlight key. |
| ● Key (+/-) | This key is used to adjust the contrast (“+” for more contrast and “-” for less contrast). |

Touch panel operation

The equipment has a touch panel display. Tapping on the screen has the same effect as left tapping with the mouse.

Method of screen tapping is explained below.

| Notation | Meaning |
|------------|--|
| Tap | Similar to left tapping a mouse. Denotes "touching" a point on the screen. This is done to execute an operation. |
| Double tap | Corresponds to double tapping a mouse. Denotes "double touching" a point on the screen. This is done to run a program. |



When tapping the screen, use your finger or a dedicated accessory stylus (a pen for tapping). Do not use a tool with a sharp edge in place of the dedicated stylus, as this may damage the panel.

1 Quick Start Checklist

When using the equipment for the first time, follow the procedure given below.

1.1 Open the Package

Remove the equipment from the package. For details, refer to the "Quick Reference Guide" that comes with the equipment.

1.2 Turn the Power On

Connect the equipment to an AC adapter or charging unit to provide power to the main and sub batteries.

Press the power switch to turn on the power. For details, refer to the "Quick Reference Guide" that comes with the equipment.

1.3 Equipment Startup

After turning the power on, follow the steps in "Equipment Startup" (see section 2) to initialize the equipment.

1.4 Application Setup and Configuration

Configure the equipment through the "Setup Menu". For details, refer to Section 3. Follow the installation instructions provided by the application provider.

1.5 Run Installed Applications

Start the equipment to verify that the unit is properly configured.



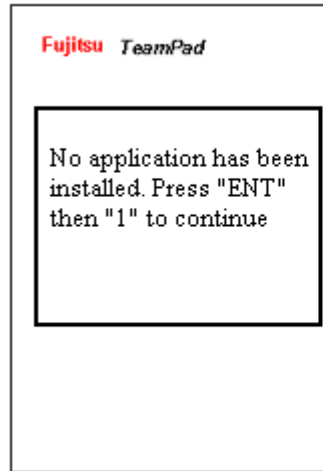
Remember

The main battery is not charged. Be sure to charge it or connect the AC adapter to the equipment before starting with operations.

When turning on the power for the first time, or after a hard reset (ie both batteries removed) a check is made on the equipment. If the unit has never been installed and configured through the "Setup Menu" the following equipment check screen is displayed.

2 Equipment Startup

2.1 Startup check

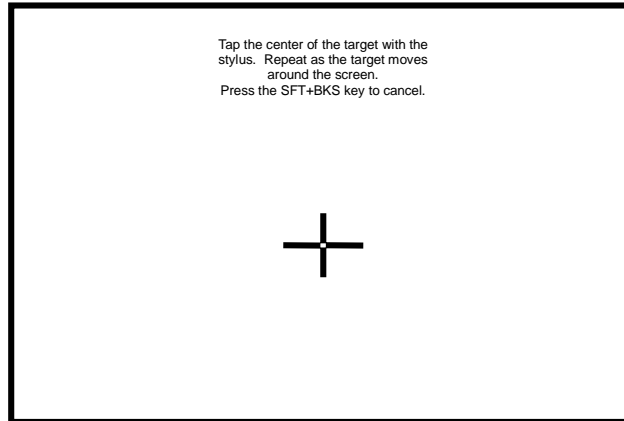


To begin the startup procedure: Hold down the ENT/SYS key, then press the “1” Key to Start the Touch panel calibration.

To stop the startup procedure: Turn off the power by pressing the power key.

2.2 Touch Panel Calibration

The following calibration screen will appear. Follow the instructions on the screen. Tap the target (+) with a stylus as it moves from the center to the four corners of the screen.

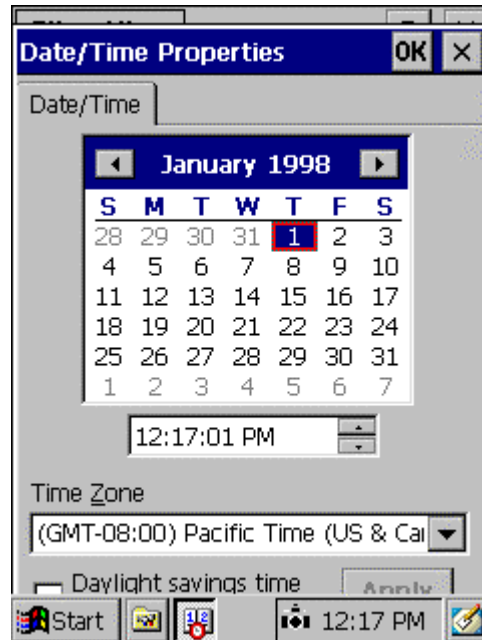


If the system detects the touch too far from the target, the calibration must be done again from the beginning. When all the positions have been successfully tapped, the target ceases to be displayed and the following message appears: "Press the ENT key to accept the new setting". Press the ENT key to register the calibration data and terminate the function. Proceed to "Date and Time Settings".

Do not use an item with a sharp edge, such as a pencil or ballpoint pen, for tapping the screen, as this may damage or break the screen. Do not place the palm of your hand on the screen when tapping it.

2.3 Date and Time Settings

Set the date and time and tap the OK button.



[1] Time zone

Select your local time zone. Use the drop down list to display the possible choices and then select one. .

[2] Calendar

Switch the calendar to current year, month, and day. Use either the arrow's next to the month and year to scroll to the desire month and year, or tap on the month or year to change them.

[3] Current time

Set the time based on a 24-hour clock. After either selecting the hours, minutes or seconds, use the arrow keys or keyboard to change to the desire time.

[4] OK and Apply Button

Register the date and time that you have set and proceed to Section 3.

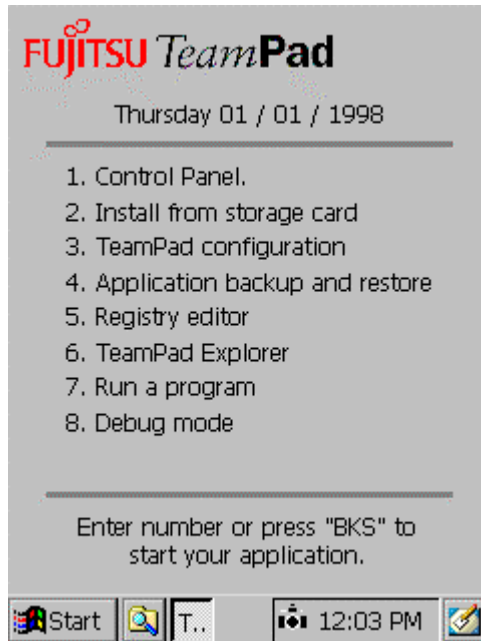
[5] X button

Cancel the date & time process and proceed to Section 3.

3 Application Setup and Configuration

The Application “Setup Menu” is used to define the application environment and define system wide configuration settings, such as Suspend and Backlight timers. This “Setup Menu” is displayed automatically after the Touch Screen calibration and the Date/Time settings. The “Setup Menu” is only displayed if an application is loaded to start automatically or the re-install box has been tapped (for details, see Section 5.3) after a memory loss. The following “Setup Menu” is presented to the user for the equipment’s configuration and software installation.

3.1 Setup Menu



- [1] Configure the operating environment via the Control Panel. For details, refer to Section 3.2.
- [2] Application Installation from a storage card. For details, refer to Section 3.3.
- [3] TeamPad Configuration. For details, refer to Section 3.4.
- [4] Application Backup and Restore. For details, refer to Section 3.5
- [5] Registry Editor. For details, refer to Section 3.6
- [6] TeamPad Explorer. For details, refer to Section 3.7.
- [7] Running a program. For details, refer to Section 3.8
- [8] Run the defined startup program (if any) in debug mode. For details refer to Section 3.9.

3.2 Control Panel

To update the operating environment of the equipment, press the “1” key, from the "Setup Menu". The control panel will then open.



The following settings may need to be updated.

[1] System Properties

Specify if the RAM area (data storing memory and program running memory) is to be increased or decreased. For details, refer to Section 3.2.1

[2] Power management

Automatic power off can be configured. For details, refer to Section 3.2.2

[3] Display Properties

Automatic backlight can be configured. For details, refer to Section 3.2.3

[4] Date/time Properties

The date and time can be updated. For details, refer to Section 3.2.4

[5] Input Panel Properties

Change the Screen Pop-up keyboard size. For details, refer to Section 3.2.5.

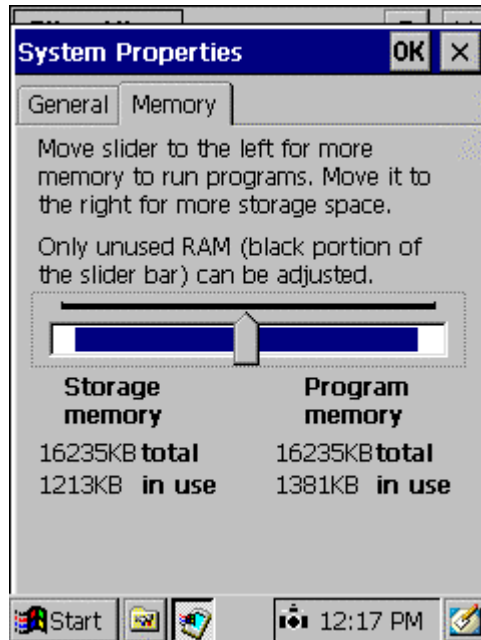
[6] X Button

Return to the “Setup Menu”.

3.2.1 System Properties

RAM usage can be updated from the System Properties function.

To activate this function, double tap the System icon on the control panel and tap the Memory tab.



[1] Memory area bar

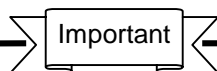
The data storage area and program area in memory (RAM), are isolated from each other by moving the bar. The bar can only be moved to the right of the default, reserving more of the RAM for program execution. While the bar will automatically grow to the right, as an application needs more memory, the bar will never automatically move to the left if more storage area is needed. The primary purpose of this function is to provide a method to guarantee a minimum amount of executable memory.

[2] OK Button

Apply the new RAM area memory allocation and return to the Control Panel.

[3] X Button

Cancel the RAM area memory allocation changes and return to the Control Panel.



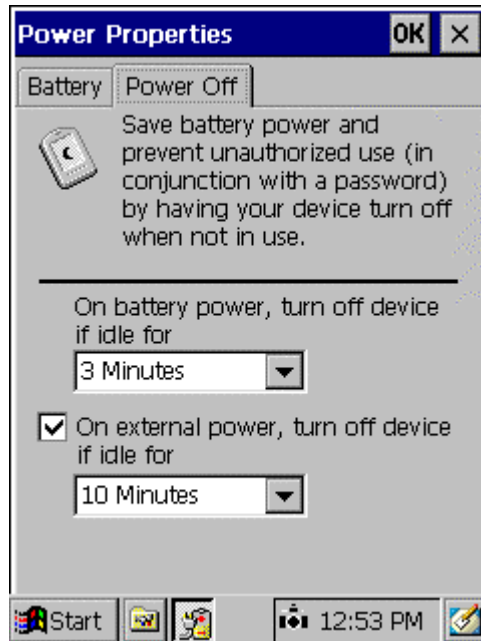
Do not update the memory area unnecessarily. Retain the default state. Otherwise, an application program may not be able to run.

The memory area will return to the default state when data is erased in memory because of a dead battery.

3. 2. 2Power Management Properties

The equipment's automatic power off feature can be configured using the Power Properties function. These settings will affect the equipments battery life.

To activate this function, double tap the Power management icon on the control panel and tap the Power Off tab.



[1] Idle time until activation of suspend mode when battery is used

Specify a time for activating the automatic power OFF feature when the main battery is used and the AC power is not connected. It is set to three minutes at factory shipment.

[2] Enable suspend mode when an external power supply is used

Specify whether automatic power OFF is to be executed when the AC adapter is connected or in the CIU or Vehicle Holder. By checking box, the automatic power OFF feature is activated. The automatic power OFF feature is disabled at factory shipment.

[3] Idle time until activation of suspend mode when an external power supply is used

Specify the time until automatic power OFF when the AC adapter is connected and item [2] is checked.

[4] OK Button

Apply the new Power Management Settings and return to the Control Panel.

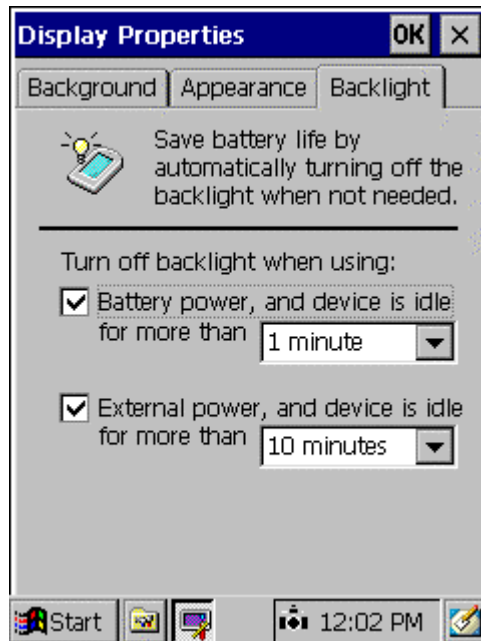
[5] X Button

Cancel the Power Management changes and return to the Control Panel.

3. 2. 3Display Properties

Controls the period of time before the backlight will be automatically turned off. These settings will affect the equipments battery life.

To activate this function, double tap the Display icon on the control panel and tap the Backlight tab.



[1] Turn off the backlight automatically when a battery is used

Specify whether the backlight is to be automatically turned off when the main battery is used (when the AC adapter is not connected). By pressing the , the automatic backlight OFF feature is enabled. The feature is enabled at factory shipment and configured for 1 minute.

[2] Turn off the backlight automatically when an external power supply is used.

Specify whether the automatic backlight OFF feature is to be activated when an AC adapter is connected or in the CIU or Vehicle Holder. By pressing the , the automatic backlight OFF feature is enabled. It is enabled at factory shipment and configured for 10 minutes.

[3] OK Button

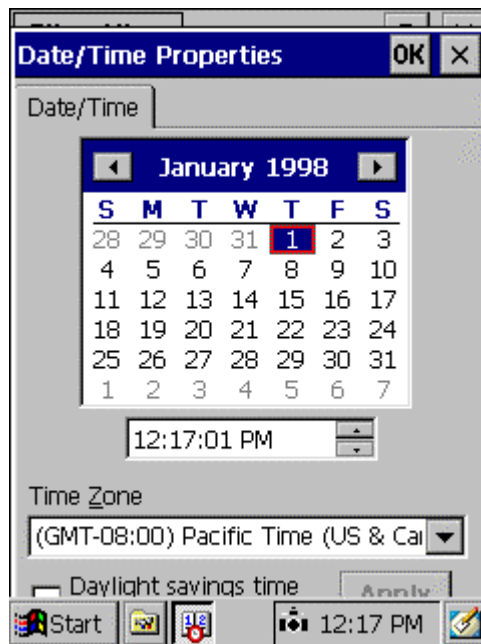
Apply the new Backlight Settings and return to the Control Panel.

[4] X Button

Cancel the Backlight Setting changes and return to the Control Panel.

3.2.4 Date and Time Properties

Set the date and time for the equipment.



[1] Time zone

Select your local time zone. Use the drop down list to display the possible choices and then select one. .

[2] Calendar

Switch the calendar to current year, month, and day. Use either the arrow's next to the month and year to scroll to the desire month and year, or tap on the month or year to change them.

[3] Current time

Set the time based on a 24-hour clock. After either selecting the hours, minutes or seconds, use the arrow keys or keyboard to change to the desire time.

[4] OK and Apply Button

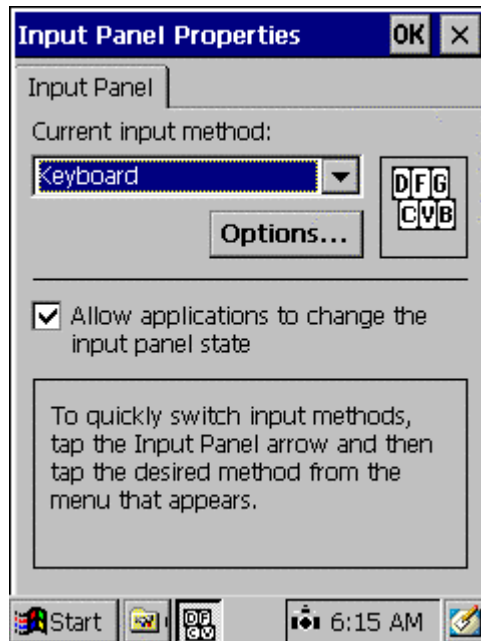
Register the date and time that you have set and proceed to Section 3.

[5] X button

Cancel the date & time process and proceed to Section 3.

3.2.5 Screen Input Panel (SIP) Keyboard Size

The Screen Input Panel (SIP) can be configured to have small keys or larger keys. To configure the keyboard size, double tap the "Input Panel" icon on the control panel and the following Screen will be displayed. Both keyboards require the use of a stylist.



[1] Options button

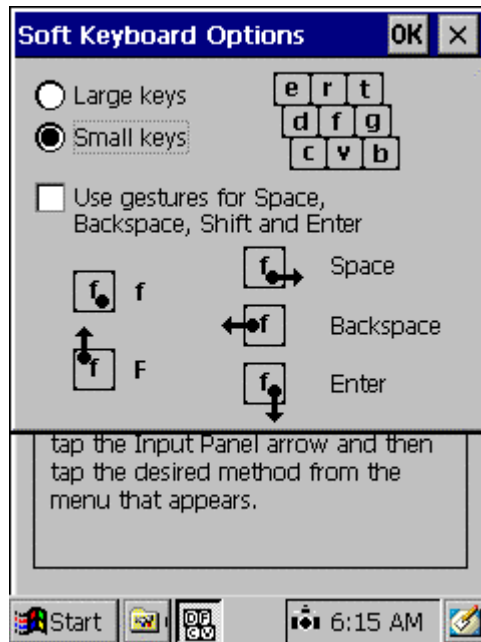
Change the Screen Input Panel keyboard size. When tapped, the following window will be displayed.

[2] OK button

Register the Input Panel Changes and return to the Control Panel.

[3] X button

Cancel the Input Panel process and return to the Control Panel.



[1] Large keys Radio Button

Change the Screen Input Panel keyboard size to “Large Keys”. When the SFT+F5 keys are pressed, the SIP will be displayed with the larger keys.

[2] Small keys Radio Button

Change the Screen Input Panel keyboard size to “Small Keys”. When the SFT+F5 keys are pressed, the SIP will be displayed with the smaller keys.

[3] OK button

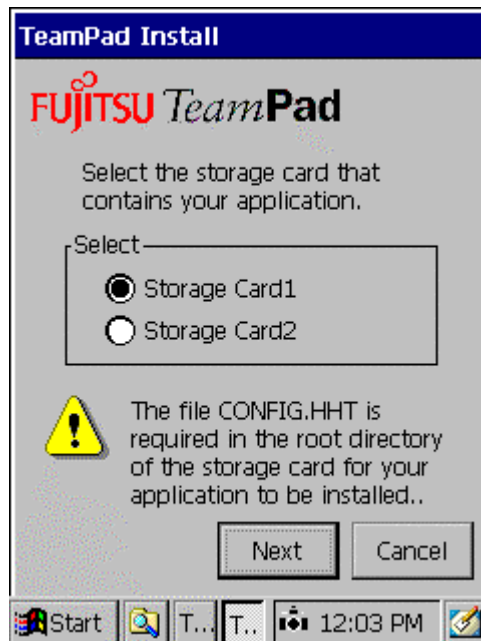
Register the Input Panel Changes and return to the previous Window.

[4] X button

Cancel the Input Panel process and return to the Previous Window.

3.3 Application Installation

To install the application(s) on the equipment, press the “2” key from the “Setup Menu” and the following window opens.



Select the Storage Card from which the software installation will occur. Select Storage Card1 if the application is to be loaded from a compact flash card located in the side of the unit. Select Storage Card2 if the application is to be loaded from a Type II flash card located in the top of the unit. For information regarding the CONFIG.HHT process, please refer to the “TeamPad 500 Programmer’s Reference Guide”.

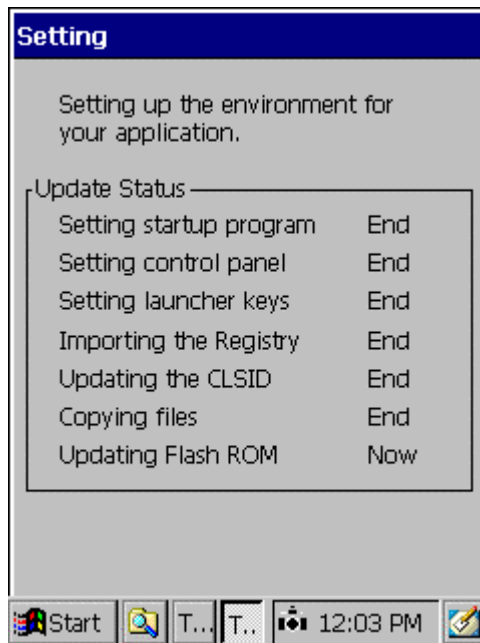
[1] Next Button

Continue the Application Installation process.

[2] Cancel Button

Cancel the Application Installation Process. Return to the “Setup Menu”.

As the CONFIG.HHT file is being processed, a status box is displayed.

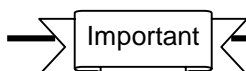


At completion a screen similar to the following will be displayed.



[1] Apply Button

Finishes the Application Installation process, and returns to the “Setup Menu”.



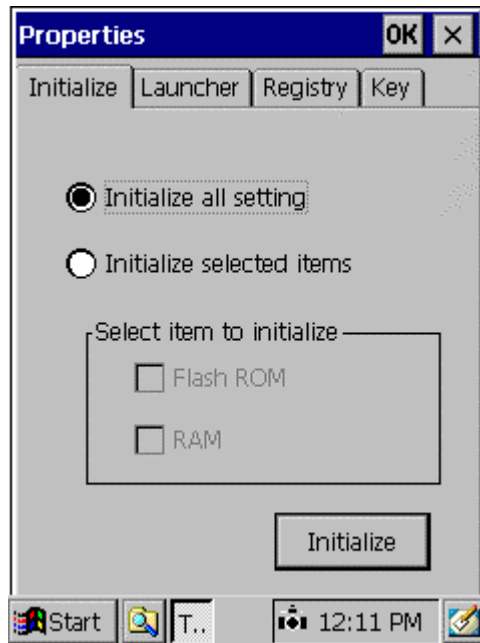
When installing an application program, it's best to initialize the system to a known state. See Section 3.4.1 for more details.

3.4 TeamPad Configuration

To update the TeamPad 500's configuration, press the '3' key at the "Setup Menu". Available options are Initialize Settings, Defining Launcher Keys, Backup/Restore the Registry, or configure the equipment's combination keystrokes.

3.4.1 Initialize Settings

The "Initialize Settings" option allows the user to configure the equipment back to default settings or to "Initialize" only certain settings (Flash ROM or RAM). To access this function press the Initialize tab.



[1] Select Type Of Initialize

Select "Initialize all setting" to initialize ROM and RAM.

Select "Initialize selected items" to initialize only ROM or RAM. Once this is selected you will then be able to select either ROM or RAM.

[2] Initialize Button

Continue the Initialize Process.

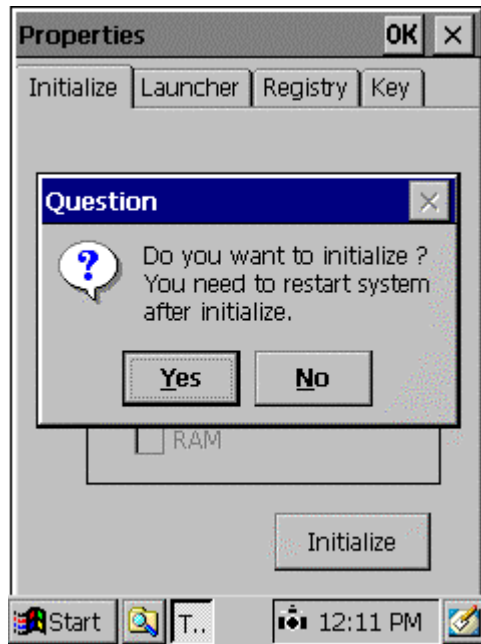
[3] OK button

Return to the "Setup Menu" and do not process the Initialize.

[4] X button

Return to the "Setup Menu" and do not process the Initialize.

The following display will appear if the "Initialize" was selected.



[1] Yes Button

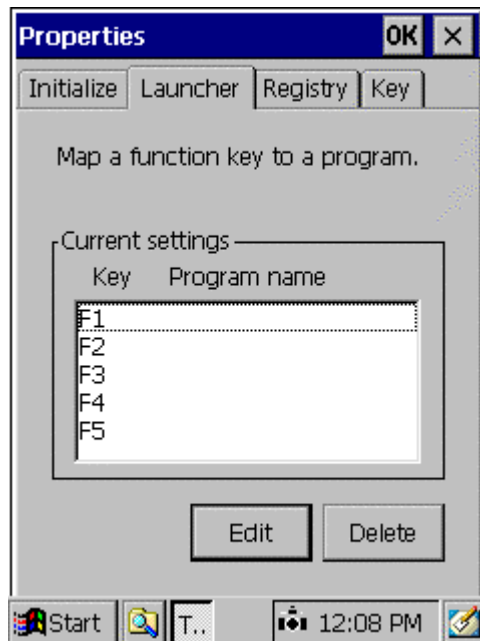
Initialize to default settings. A progress bar will be displayed while the function is running and at completion, will return to the previous Window.

[2] No Button

Cancel the Initialize Process. Return to the Previous Window.

3.4.2 Launcher Keys

To assign Launcher keys press the “Launcher” Tab after selecting “3” for “TeamPad Configuration” from the “Setup Menu”. Each of the F1-F5 keys can be defined to have a special meaning. When the key is pressed, the application defined to the function key is started. The Launcher keys can be used to start additional functions without providing the end user access to the Task Bar.



[1] Edit Button

Add or Modify a Launcher key. Go to the next Window.

[2] Delete Button

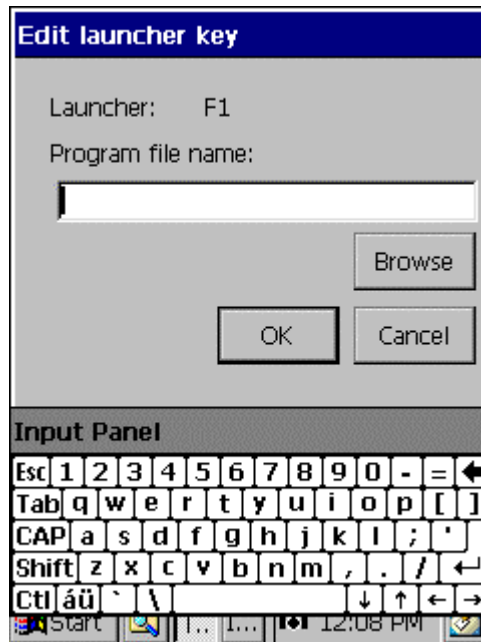
Deletes an existing Launcher key definition.

[3] OK button

Return to the “Setup Menu”.

[4] X button

Return to the “Setup Menu”.



[1] Edit Window

Enter the path name of the program you wish to start by either browsing to the program or the popup keyboard (“SFT” + ”F5”).

[2] OK Button

Accept the Launcher key definition. When complete return to the previous Window.

[3] Browse Button

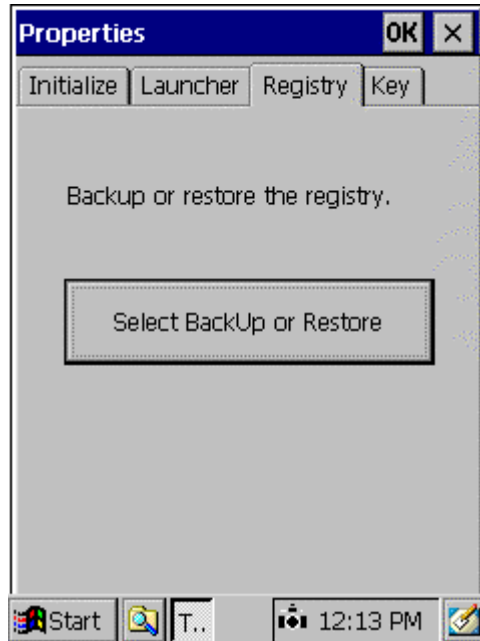
Browse the system to locate an application to assign to the selected launcher key

[4] Cancel Button

Cancel the Launcher Edit key process. Return to the previous Window.

3.4.3 Registry Backup and Restore

To Backup or Restore the Registry, press the “Registry” Tab after selecting “3” for “TeamPad Configuration” from the “Setup Menu”.



[1] “Select BackUp or Restore” box

Continue the Backup or Restore Registry function. Continue to the next Window.

[2] OK button

Return to the “Setup Menu”.

[3] X button

Return to the “Setup Menu”.



[1] Backup or Restore Tab

Select which process to perform.

[2] Browse Button

Browse the system to locate destination of Backup or Restore File.

[3] OK Button

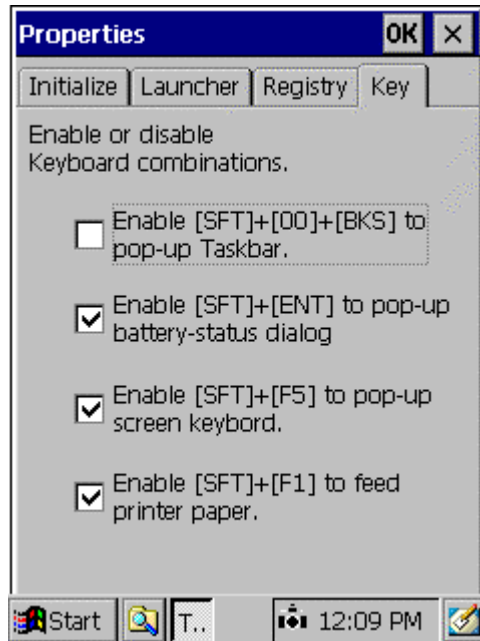
Accept the Registry Backup or Restore file destination. When complete return to the previous Window.

[4] X button

Return to the previous Window.

3.4.4 Combination Keys

Equipment-specific functions, such as operations on sound volume/battery display, screen keyboard, Paper Feed, etc., can be performed via key combinations. To configure the allowed combination keys, press the “Key” Tab after selecting “3” TeamPad Configuration from the “Setup Menu”.



[1] Keyboard Check Boxes

Specifies whether to perform an operation that is selected by pressing a combination of keys. By pressing the , the operation specified by the keys can be executed.

The following items can be specified.

- Task bar display control (SFT + 00 + BKS)
- Battery/Volume/Calibration display control (SFT + ENT/SYS)
- Screen keyboard display control (SYS + F5)
- Integrated Printer Paper Feed (SFT + F1)

[2] OK button

Return to the “Setup Menu”.

[3] X button

Return to the “Setup Menu”.

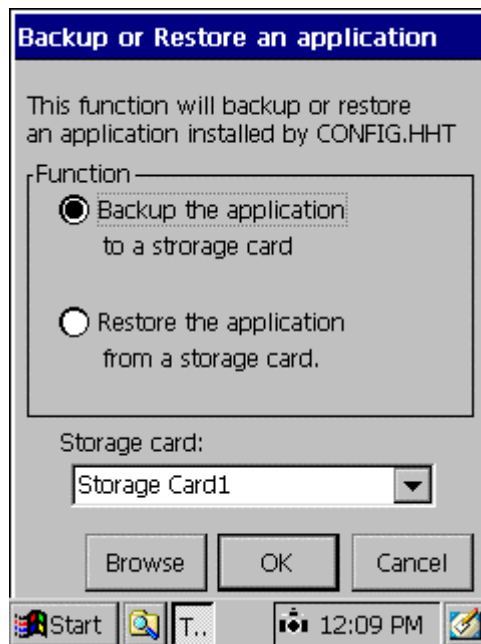
Remember

For details on operations when key combinations are pressed, refer to Section 4. Except for the task bar display, operations are set to enabled at factory shipment.

3.5 Application Backup and Restore

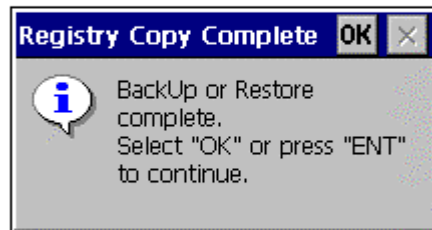
The operating environment for a configured application program can be saved. By restoring a saved application environment, the equipment can be returned to the state in which the environment was last saved. Backup/Restore can also be used to move an application from one RAM Object Store based system to another (clone an application).

To save or restore an application environment, press “4” at the “Setup Menu”. The following selection window will then open.



- [1] Backup the Application radio button.
Perform a Backup operation if the “OK” box is pressed.
- [2] Restore the Application radio button
Perform a Restore operation if the “OK” box is pressed.
- [3] Browse button
Locate another storage area, other than Storage Card 1 or 2.
- [4] OK button
Continue Backup or Restore Operation. Continue to next Window.
- [5] Cancel button
Return to the “Setup Menu”.

As the Backup or Restore procedure is executing, a Status Bar is displayed. At completion, the following screen is displayed.



[1] OK button

Return to the "Setup Menu"

[2] ENT Key

Return to the "Setup Menu".

Remember

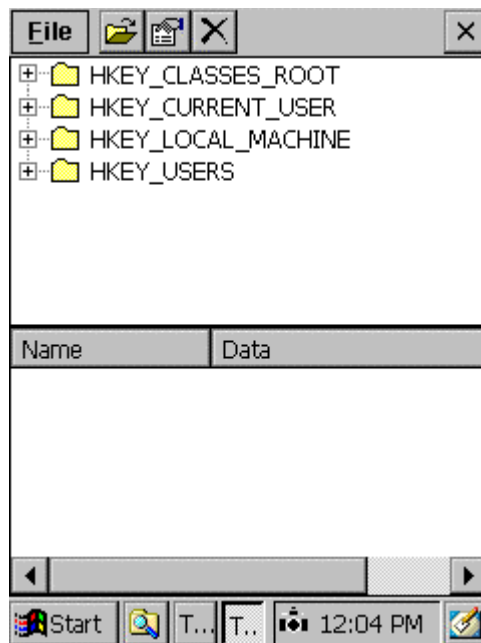
On a restore operation, instead of returning to the "Setup Menu", the equipment powers off. On the next power on, the application will restart.

The application is restored to the settings from the last backup operation.

3.6 Registry Editor

The TeamPad 500's registry can be viewed and or modified by selecting "5" from the "Setup Menu." Registry keys can be added and saved to a file if desired. These Registry update files can be automatically loaded during the "Install" process. An individual registry update file must be created for each new key tree structure created.

Use extreme caution since accidental changes to the Registry could cause unpredictable results.



[1] "+"

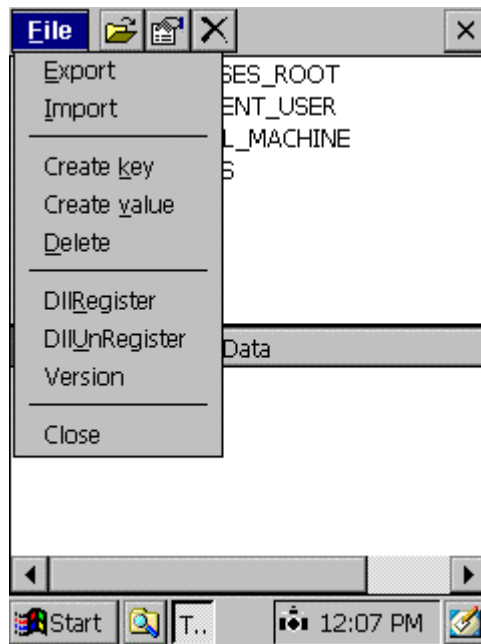
Used to expand the sub keys.

[2] X button

Close the Registry Editor and return to the "Setup Menu".

[3] File Dropdown Menu

Proceed to the next Window.



[1] Export/Import

Export or Import a Registry key.

[2] Create key/value

Create a registry key or modify an existing registry value.

[3] Delete

Delete a Registry key.

[4] Register or Un-register

Register or Un-register a DLL to the system.

[5] Version

Display the version number of the Registry Editor.

[6] Close

Close the Registry Editor.

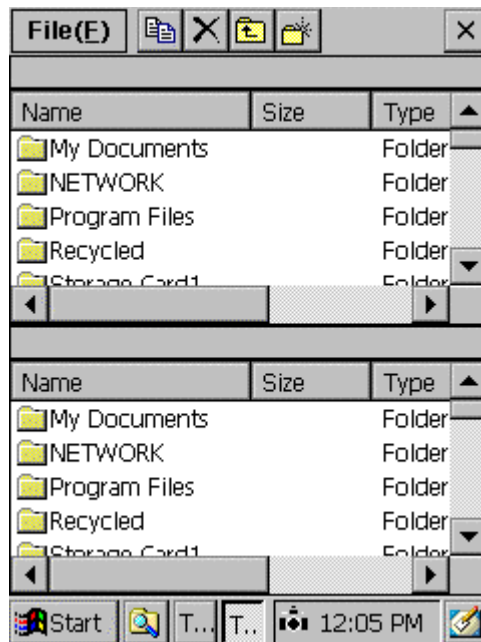
3.7 TeamPad Explorer

The equipment contains a dedicated file manager called the “TeamPad Explorer”. This utility supports the following functions.

- Copying data in file units and folder units
- Deleting files and folders
- Creating new folders
- Displaying the available memory

Use extreme caution since accidental changes made by the Explorer could cause unpredictable results.

To start the “TeamPad Explorer”, press “5” at the “Setup Menu”. The following selection window will then open.



[1] Listing

Folders and files are listed. Double-tap the folder name to display the folder list. Double tap a file (execution format file: extension EXE) to run the file.

[2] Command bar

Operations can be performed using the command bar.



File copy button:

Copies a selected file and folder in a specified list to the adjacent list.



File delete button:

Deletes a selected file and folder in a specified list.



Return button:

Displays the contents of a folder that is located one hierarchy level above a specified list.



New folder creation button:

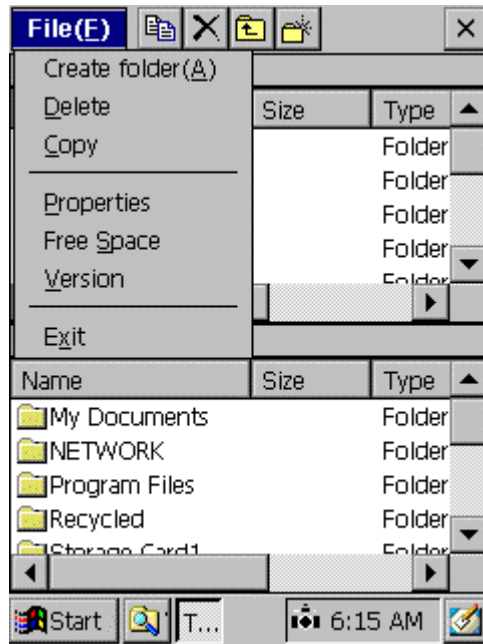
Creates a new folder in a specified list.

[3] File Dropdown Menu

Proceed to the next Window.

[4] X button

Close the TeamPad Explorer and return to the "Setup Menu".



[1] Create Folder

Creates a Sub Folder in the selected Pane.

[2] Delete

Deletes a file in the selected Pane.

[3] Copy

Copies a file in the selected Pane.

[4] Properties

Displays the file properties of a selected file.

[5] Free Space

Displays the available free space in the Object Store and Storage Card(s).

[6] Version

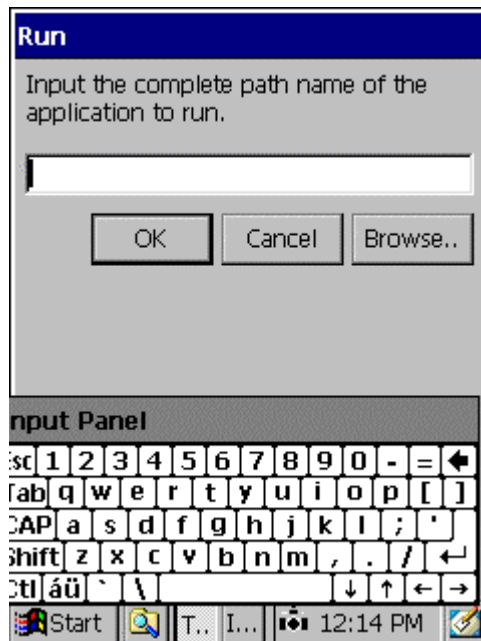
Displays the Version of the TeamPad Explorer.

[7] Exit

Exit TeamPad Explorer. Return to the "Setup Menu".

3.8 Run a Program

To Run a Program, press “7” at the “Setup Menu”. The following selection window will then open. You can drag the Screen by touching the display and moving in the direction you wish.



[1] Entry Box

Enter the file name of the program to be run.

[2] Browse button

Opens a file browser dialog box. A program name can be selected from the dialog box.

[3] OK button

Run the program whose file name was entered.

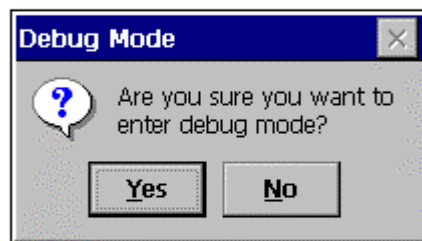
[4] Cancel button

Cancel the Run program selection. Return to the “Setup Menu”.

3.9 Debug Mode

To enter Debug Mode, press “8” at the “Setup Menu”. The following selection window will then open. When in this mode, the Toolbar is active, so you can enter the Start Menu.

When the debug mode is entered, if an auto start application is defined, it will be started and the Task Bar will be made accessible.



[1] Yes button

Select this button to enter Debug Mode. Unit will restart. If a startup program is defined, that program will launch, otherwise equipment will go to the Windows CE desktop.

[2] No button

Select this button to return to the “Setup Menu”.

4 Basic Operations

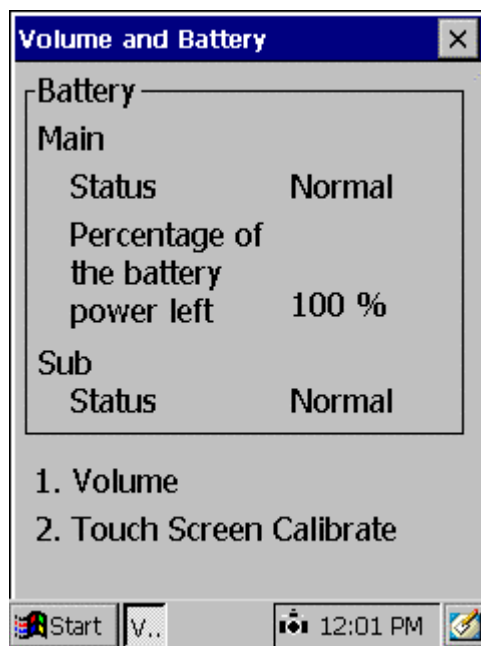
Basic Operations are available at all times unless access was disabled during configuration (See Section 3.4.4). These functions allow for operations such as turning on the Backlight, Checking the Main and Sub batteries, Adjusting the Sound and Touch Panel Calibration as well as the Alpha keyboard Pop-up. The following is a description of each of the available basic functions.

4.1 Turning on the backlight

The screen backlight can be turned ON and OFF by holding the SFT key down and pressing the F2 key.

4.2 Battery Status

The equipment has a main and sub battery which charge automatically when either an AC adapter is connected, or the unit is placed in a CIU or Vehicle Holder. To check the Battery Status, press and hold the SFT key down and then press the ENT/SYS key. The following Window will be displayed.



[1] Main Battery

a. Status

- External: An AC adapter or Holder is connected.
- Normal: The battery is being used.
- Low : The main battery is low (25%) . It must be charged or replaced.
- Unknown: The operational state of the battery cannot be checked.

b. Percentage of the battery power left

Displayed as a percentage.

[2] Sub battery

a. Status

- Normal : Sufficient for memory backup.
- Low : Remaining power insufficient for memory backup.

[3] X button

Close the Battery Status Window.

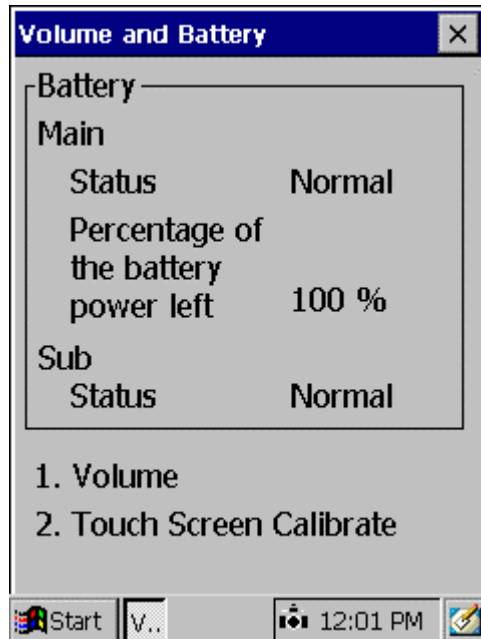
Important

When the battery is very low on power, the LED just below the keyboard will start blinking red. A very short time after the LED starts blinking, the unit will automatically power off. The battery must be charged or replaced in this case.

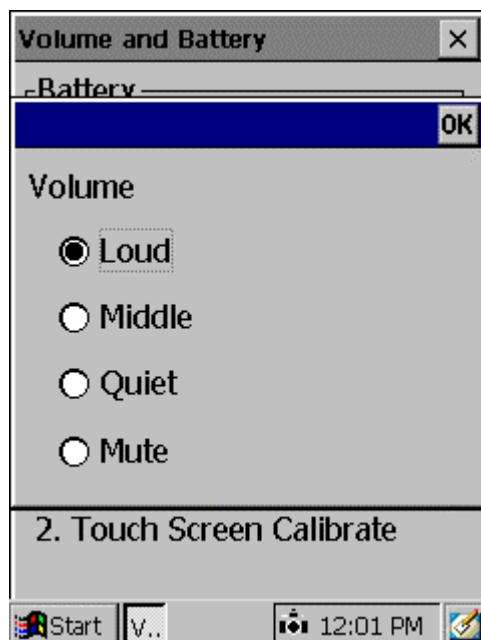
If the main battery is disconnected in a situation in which the sub battery is low on power, the data stored in the memory may be lost. If the sub battery must be replaced, make sure the main battery has sufficient power to hold the state of the unit while the sub battery is replaced.

4.3 Adjusting the Sound Volume

While holding the SFT key down, press the ENT/SYS key. The following Volume and Battery panel will be displayed.



To adjust the Volume, press the "1" key. The sound volume can be adjusted to one of four levels. Tap the desired sound volume level. A sample sound will be emitted on the tap.



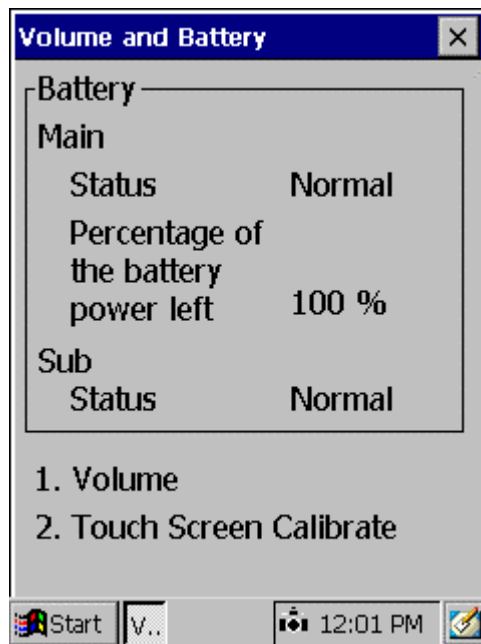
[1] OK button

Register the Sound Volume. Return to the Battery Status Window.

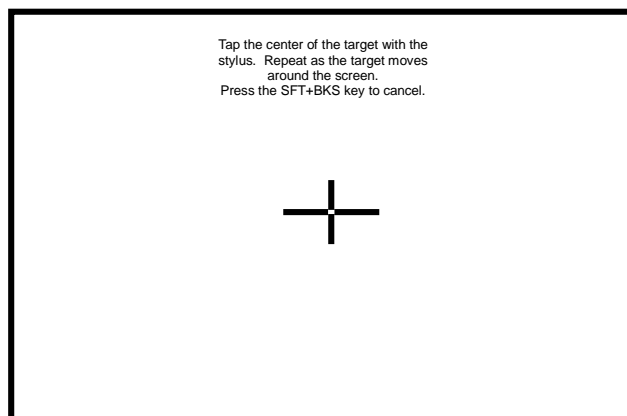
4.4 Touch Panel Calibration

After a period of time, you may experience that the Touch Panel seems too be “drifting”, ie the touch does not register correctly. If this is the case it will be necessary to re-calibrate the tapping position.

While holding the SFT key down, press the ENT/SYS key. The following Volume and Battery panel will be displayed.



Press “2” for the “Touch Screen Calibration” process to start. The following calibration screen will open. Follow the instructions on the screen. Tap the target (+) with a stylus as it moves from the center to the four corners of the screen.

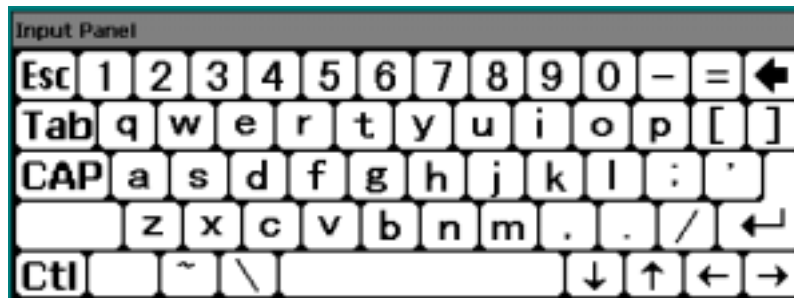


If the system detects the touch too far from the target, the calibration must be re-done from the beginning. When all the positions have been tapped, the target ceases to be displayed and the following message appears: "Press the ENT key to accept the new setting". Press the ENT key to register the calibration data and return to the Battery Status Window.

4.5 Alpha Keyboard Pop-up

For entering characters that are not available on the keypad, use the Alpha-Keyboard popup.

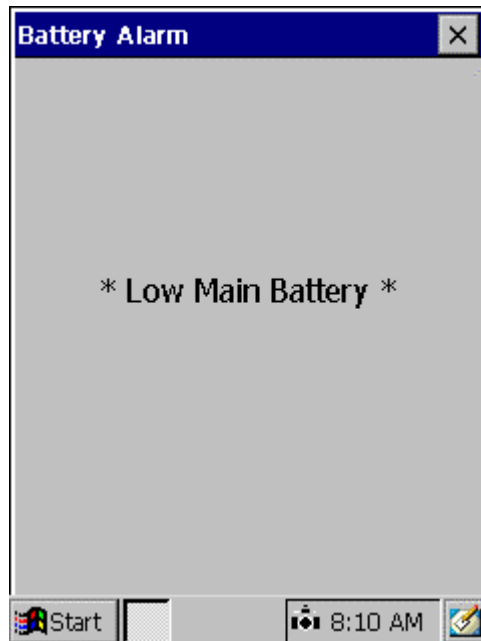
Hold down the SFT key and press the F5 key to open the screen keyboard. It will open in the lower portion of the LCD display.



Tap the desired character. To close the screen keyboard, hold down the SFT key and press the F5 key.

4.6 Low Main Battery Warning

When the Main Battery is at a low level, the following Window will be displayed to alert the user. When this panel is displayed, the equipment should be charged as soon as possible with an approved A/C adapter or a charging device such as a CIU. For more details, refer to the Programmer's Reference Guide or to the Operator's Guide for details on Main Battery replacement.



[1] X button

Close the Low Main Battery Window.

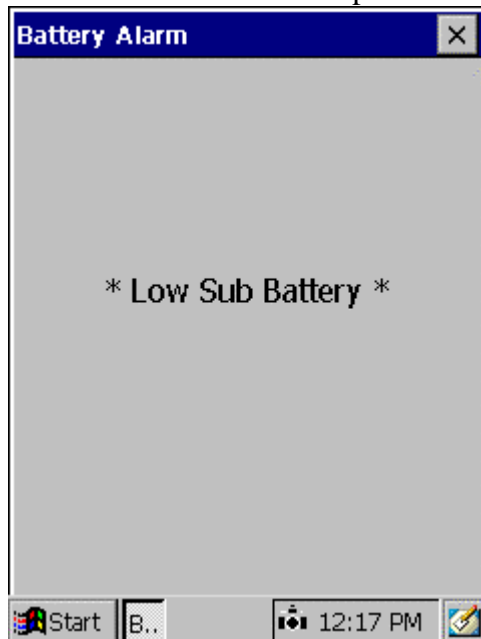
Important

When the battery is very low on power, the LED just below the keyboard will start blinking red. A very short time after the LED starts blinking, the unit will automatically power off. The battery must be charged or replaced in this case.

If the main battery is disconnected in a situation in which the sub battery is low on power, the data stored in the memory may be lost. If the sub battery must be replaced, make sure the main battery has sufficient power to hold the state of the unit while the sub battery is replaced.

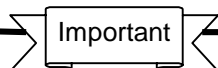
4.7 Low Sub Battery Warning

When the Sub Battery is at a low level, the following Window will be displayed to alert the user. Unless the Main battery has been removed for an extended period of time or the unit has been out of service for an extended period of time, the health of the sub battery should be questioned. If the Main battery has been removed for an extended period of time or the unit has been out of service for an extended period of time, then fully charge the Main battery and the Sub battery will slowly recharge. If the unit has been in constant operations, then the Sub battery should be checked to see if it is disconnected and if not it should be replaced.



[1] X button

Close the Low Sub Battery Window

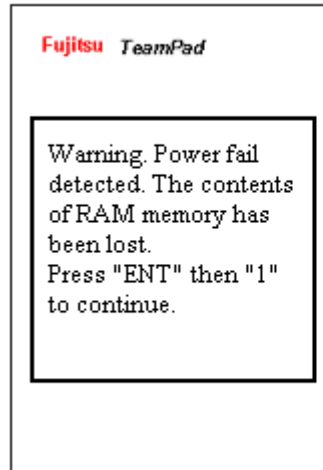


When the battery is very low on power, the LED just below the keyboard will start blinking red. A very short time after the LED starts blinking, the unit will automatically power off. The battery must be charged or replaced in this case.

If the main battery is disconnected in a situation in which the sub battery is low on power, the data stored in the memory may be lost. If the sub battery must be replaced, make sure the main battery has sufficient power to hold the state of the unit while the sub battery is replaced.

5 Restoring the Application

When data is lost from memory (RAM) because of a low battery situation, the application operating environment can be automatically restored. This function is only relevant for files that are installed using the Application "Setup Menu" (for details, see Section 3). Note that files that were copied to their location via Explorer are not restored. The state of the unit is returned to that at Install time.



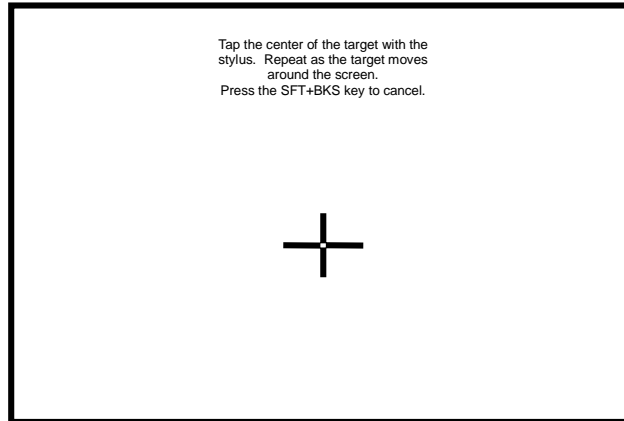
The Restore process starts up automatically when data is erased in memory because of a dead battery. When the unit is restarted/powerd on, the following Window will be displayed.

To begin the restore procedure: Hold down the ENT/SYS key, then press the "1" Key to start the Touch Panel calibration.

To stop the restore procedure: Turn off the power by pressing the power key.

5. 1 Touch Panel Calibration

The following calibration screen will open. Follow the instructions on the screen. Tap the target (+) with a stylus as it moves from the center to the four corners of the screen.

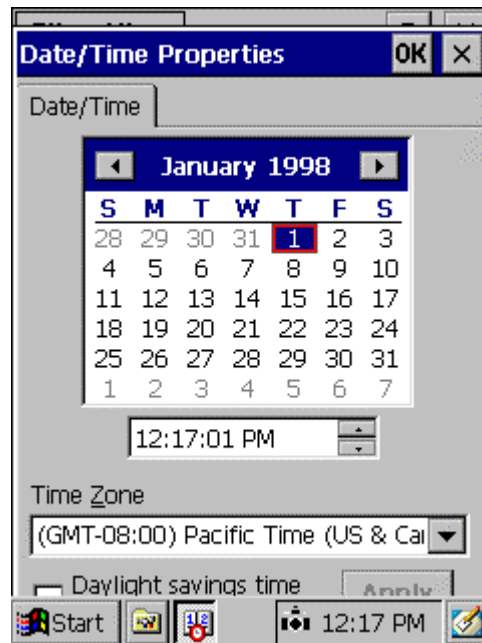


If the System detects the touch too far from the target, the calibration must be done again from the beginning. When all the positions have been tapped, the target ceases to be displayed and the following message appears: "Press the ENT key to accept the new setting". Press the ENT key to register the calibration data and terminate the function. Proceed to "Date and Time Settings".

Do not use an item with a sharp edge, such as a pencil or ballpoint pen, for tapping the screen, as this may damage or break the screen. Do not place the palm of your hand on the screen when tapping it.

5. 2 Date and Time Settings

When turning on power for the first time, the date and time must be set. Set the date and time and tap the OK button.



[1] Time zone

Select your local time zone. Use the drop down list to display the possible choices and then select one. .

[2] Calendar

Switch the calendar to current year, month, and day. Use either the arrow's next to the month and year to scroll to the desire month and year, or tap on the month or year to change them.

[3] Current time

Set the time based on a 24-hour clock. After either selecting the hours, minutes or seconds, use the arrow keys or keyboard to change to the desire time.

[4] OK and Apply Button

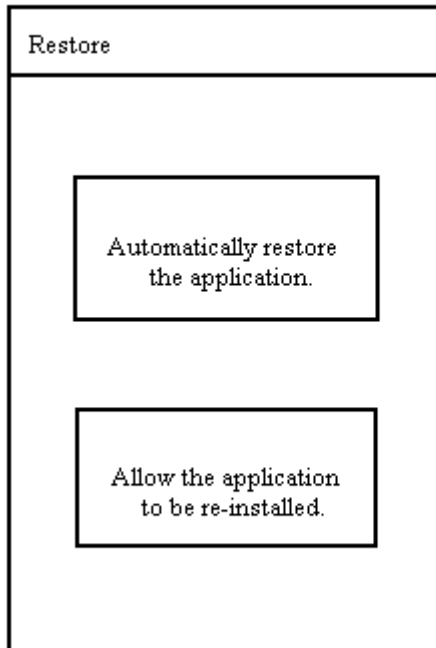
Register the date and time that you have set and proceed to Section 3.

[5] X button

Cancel the date & time process and proceed to Section 3.

5.3 Restore/Re-Initialize the Application

The user will have a choice to restore (Recover) the application from a Storage Card or re-install the application from scratch.



[1] Restore the Application

When restore is complete, an end-of-operation message is displayed and the equipment will re-start and run the configured Startup Program.

[2] Re-install the Application

When restore is complete, an end-of-operation message is displayed and the equipment will re-start and run the Setup Menu and Configuration procedure. For details, see Section 3.