

Ripwave™-MX Modem User Guide

For use with all Ripwave-MX Modem models



Part Number 40-00097-00
Revision J, Version 1.0, PV1.5
August 1, 2005

Proprietary

All information disclosed by this document is the proprietary property of Navini Networks, Inc. and is protected by copyright, trademark, and/or trade secret laws. All rights therein are expressly reserved.

TABLE OF CONTENTS

PERMISSIONS, TRADEMARKS & DISTRIBUTION	3
SAFETY	4
REGULATORY INFORMATION	5
BATTERY PRECAUTIONS	6
INTRODUCTION	7
PACKAGE INVENTORY	7
RIPWAVE-MX MODELS	7
OPERATING FREQUENCIES	8
MINIMUM COMPUTING REQUIREMENTS	8
PHYSICAL CHARACTERISTICS	9
INSTALLING THE LMX MODEM	10
ACCESSING THE INTERNET	12
TROUBLESHOOTING	12
LCD DISPLAY	12
INSTALLING NAVINI DIAGNOSTICS (NAVDIAG)	14
TROUBLESHOOTING USING NAVINI DIAGNOSTICS (NAVDIAG)	17
UNINSTALLING NAVINI DIAGNOSTICS (NAVDIAG)	23
OPTIONAL BATTERIES	24
OPTIONAL EXTERNAL BATTERY PACKS	24
CONNECTING THE STANDARD EXTERNAL BATTERY PACK (S-EBP)	25
THE INDICATOR LIGHT ON THE STANDARD EXTERNAL BATTERY PACK (S-EBP).....	26
CHARGING THE STANDARD EXTERNAL BATTERY PACK (S-EBP).....	26
CONNECTING AND DISCONNECTING THE HEAVY DUTY EXTERNAL BATTERY PACK (HD-EBP).....	27
THE INDICATOR LIGHT ON THE HEAVY DUTY EXTERNAL BATTERY PACK (HD-EBP)	28
CHARGING THE HEAVY DUTY EXTERNAL BATTERY PACK (HD-EBP)	29
CARE & MAINTENANCE	29
UPGRADING THE MODEM	30
ADDENDUM 1: RIPWAVE™ -MX MODEM - PC TROUBLESHOOTING	32
ADDENDUM 2: END USER SOFTWARE LICENSE AGREEMENT	37

Permissions, Trademarks & Distribution

Copyright© 2001 - 2005, Navini Networks, Inc. All information contained herein and disclosed by this document is confidential and the proprietary property of Navini Networks, Inc. and all rights therein are expressly reserved. Acceptance of this material signifies agreement by the recipient that the information contained in this document is confidential and that it will be used solely for the purposes set forth herein. Acceptance of this material signifies agreement by the recipient that it will not be used, reproduced in whole or in part, disclosed, distributed, or conveyed to others in any manner or by any means – graphic, electronic, or mechanical, including photocopying, recording, taping, or information storage and retrieval systems – without the express written permission of Navini Networks, Inc.

Navini Networks is a registered trademark. The Navini Networks logo, Zero-Install, Ripwave, and Unwired by Navini are trademarks of Navini Networks, Inc. Other product and company names mentioned herein may be trademarks and/or service marks of their respective owners.

Except for the hardware warranty, nothing herein constitutes any representation, warranty, assurance, or guaranty of any kind.

Because of continuing developments and improvements in design, manufacturing, and deployment, material in this document is subject to change without notification and does not represent any commitment or obligation on the part of Navini Networks, Inc.

Navini Networks, Inc. shall have no liability for any error or damages resulting from the use of this document.

All Navini Networks logos and trademarks are the property of Navini Networks, Inc. Unauthorized usage is strictly prohibited without the express written permission of Navini Networks, Inc.



© 2001 - 2005 Navini Networks, Inc. All rights reserved.

Safety

When using Navini Ripwave electronic equipment, always follow basic safety precautions to reduce the risk of electrical shock, fire, and injury to people and/or property. Follow all warnings and instructions that come with the equipment.

1. Do not use the equipment while you are in a bathtub, shower, pool, or spa. Exposure of the equipment to water could cause severe electrical shock or serious damage to the equipment.
2. Do not immerse the equipment in any type of liquid. Use a damp cloth and if needed, water and a mild detergent to clean the plastic shell. Unplug the equipment from the power source before cleaning.
3. Follow all airport and FAA regulations when using the equipment on or near aircraft.
4. Only operate the equipment from the type of power source(s) indicated in this manual (110/220 VAC, 60/50 Hz adapter or Navini supplied battery). Any other type of input power source may cause damage to the equipment.
5. Power the equipment using only the battery or the AC adapter cable provided, and in accordance with the instructions specified in the user manual.
6. Do not use a frayed or damaged power cord. Do not place the power cord where it can be stepped on or tripped over.
7. Do not touch wires where the insulation is frayed or worn unless the equipment has been disconnected from its power source.
8. Do not overload wall outlets, power strips, or extension cords. This can cause serious electrical shock or fire.
9. Do not place the equipment on an unstable surface. It can fall and cause injury or damage to the equipment.
10. Do not disassemble the equipment. Removing covers exposes dangerous voltages or other risks and also voids the warranty. Incorrect reassembly can cause equipment damage or electrical shock. Only an authorized repair technician should service this product.
11. Do not expose the equipment to extreme hot or cold temperatures.
12. Do not use the equipment under the following conditions:
 - When the equipment has been exposed to water or moisture.
 - When the equipment has been damaged.
 - When the power cord is damaged or frayed.
 - When the equipment does not operate properly or shows a distinct change in performance.

Regulatory Information

FCC Notice



CAUTION: This device is a Radio Frequency transmitter. It is required to comply with FCC RF exposure requirements for transmitting devices. For all LMX Modems except for the 2.6 LMX with window mount, a minimum separation distance of 8 inches (20 cm) or more must be maintained between the antenna and all persons during device operations to ensure compliance with the FCC's rules for Radio Frequency Exposure. For the 2.6 LMX Modem with a window mount, a minimum of 8.3 inches (21 cm) or more must be maintained between the window mount antenna and all persons during device operations. If this minimum distance cannot be maintained, exposure to RF levels that exceed the FCC's limits may result.

FCC Compliance and Advisory Statement

***Tested To Comply
With FCC Standards
FOR HOME OR OFFICE USE***

This equipment has been tested and found to comply with the limits for a class B digital device, Pursuant to Part 15 of the FCC rules. The operation is subject to the following two conditions:

- (1) This device may not cause harmful interference, and
- (2) This device must accept any interference received, including interference that may cause undesired operation.

These limits are designed to provide reasonable protection against harmful interference in a residential installation. This equipment generates, uses, and can radiate radio frequency energy and, if not installed or used in accordance with the instructions, may cause harmful interference to radio communications. However, there is no guarantee that interference will not occur in a particular installation. If this equipment does cause harmful interference to radio or television reception, which can be determined by turning the equipment off and on, the user is encouraged to try to correct the interference by one or more of the following measures:

- 1) Reorient or relocate the receiving antenna,
- 2) Increase the separation between the equipment and the receiver,
- 3) Connect the equipment to an outlet on a circuit that is different from the one to which the receiver is connected,
- 4) Consult the dealer or an experienced radio/TV technician for additional suggestions.

INFORMATION TO USER

This device has been authorized as a radio frequency transmitter under the appropriate rules of the Federal Communications Commission. Any changes or modifications not expressly approved by Navini Networks could void the user's authority to operate the equipment.

Battery Precautions



CAUTION! To reduce risk of injury or fire, follow these instructions when handling the battery.

1. Risk of explosion is possible if the battery is replaced with one not supplied by Navini Networks.
2. Do not dispose of the battery in a fire. They may explode. Check with the local codes for battery disposal guidelines.
3. Do not open or mutilate the battery. The battery contains substances that are toxic, corrosive, or harmful to humans. If battery substances come in contact with the skin, seek medical help immediately.
4. Do not attempt to recharge the battery by any means except per the instructions in this manual.
5. If using an optional internal battery, remove the battery from the equipment if the equipment is not going to be used for a long period of time. The battery could leak and cause damage to the equipment.
6. Exercise care when handling the battery to prevent shorting the battery with conducting materials such as bracelets, rings, and keys.
7. Store the battery pack in a dry place, 0 to +40 degrees Celsius.
8. Dispose of used batteries according to environmental guidelines.

Introduction

Congratulations! The Liquid Crystal Display Ripwave™-MX (LMX) dual-mode Modem is a user-friendly, easy-to-install device that helps you connect wirelessly to the Internet. It provides complete broadband Internet access to residential and small office/home office (SOHO) customers without the necessity of professional hardware installation. The LMX Modem also provides nomadic service availability as a computer with this device is moved from room to room, location to location, or even city to city as long as there is coverage in the area.

Package Inventory

Please verify the contents of your LMX Modem package. If you do not find all of these items in your package, notify the supplier from whom you obtained it.

- LMX Modem
- LMX Modem AC power adapter
- PC-to-LMX Modem cable (Ethernet straight cable)
- Ripwave-MX Modem User Guide (on CD)
- Ripwave-MX Modem Quick Installation Guide
- Navini Diagnostics Installation CD

LMX Models

Your LMX Modem will operate in either the 2.4 GHz, 2.5-2.7 GHz, 3.4 GHz, or 3.5 GHz range. Within each frequency range there are several model types, described on the next page.



**2.4, 2.5-2.7, 3.4 & 3.5
GHz LMX Modem**

Operating Frequencies

Modem	Model	Frequency Range	Operating Band
2.4 GHz LMX	2400-2483 LMX E	2.400 GHz – 2.483 GHz	ISM
2.5 – 2.7 GHz LMX	2.5-2.6 LMX E	2.500 GHz – 2.686 GHz	MMDS/ITFS
3.4 GHz LMX	3410-3525 LMX E	3.410 GHz – 3.525 GHz	BWA/FWA
3.5 GHz LMX	3475-3600 LMX E	3.475 GHz – 3.600 GHz	BWA/FWA

The “E” in the model name stands for Ethernet. Your computer should have this port for connecting the Modem.

- An **Ethernet** connection will function with any Win32[®] Operating System (Windows[®] 95 or later).



Minimum Computing Requirements

(See, also, Addendum 1)

Operating System¹:	Ethernet Modems: Any Win32 Operating System (OS) - Windows 95 ² , Windows NT, Windows 98 ³ , Windows 98SE ³ , Windows 2000, Windows ME ³ , Windows XP ⁴ , or later version. General Information: <ul style="list-style-type: none"> ▪ Ensure that the pc network port is enabled.
CPU:	Pentium level or higher
RAM:	32 MB or the Operating System minimum, whichever is greater
Hard Drive:	50 MB free disk space for either monitoring software (Navini Diagnostics Tool) ⁵
Monitor:	256 colors, 800 x 600 resolution

¹NOTE: To upgrade your Operating System after loading the Navini Diagnostics software, you must first uninstall Navini Diagnostics prior to upgrading the OS. Otherwise, Navini Diagnostics will not work. See [Uninstall](#) instructions in this Guide.

²NOTE: Internet Explorer 3.0 or higher is required for installation on Windows 95 Operating Systems.

³NOTE: The LMX Modem must be left powered ON whenever you shut down or restart any Windows 98 or ME platforms. If the Modem is off, a blue screen appears on the monitor. In the event that happens you will most likely have to power cycle the PC.

⁴NOTE: Windows XP must be Service Pack Level 1 or higher.

⁵NOTE: Navini Diagnostics software is supported on Win98, Win98SE, Win2000, WinME, WinXP or higher, Mac X (also called Mac10) or higher, or

Red Hat Linux 8.0 or higher. Mac users must have the Snuffit extraction software.

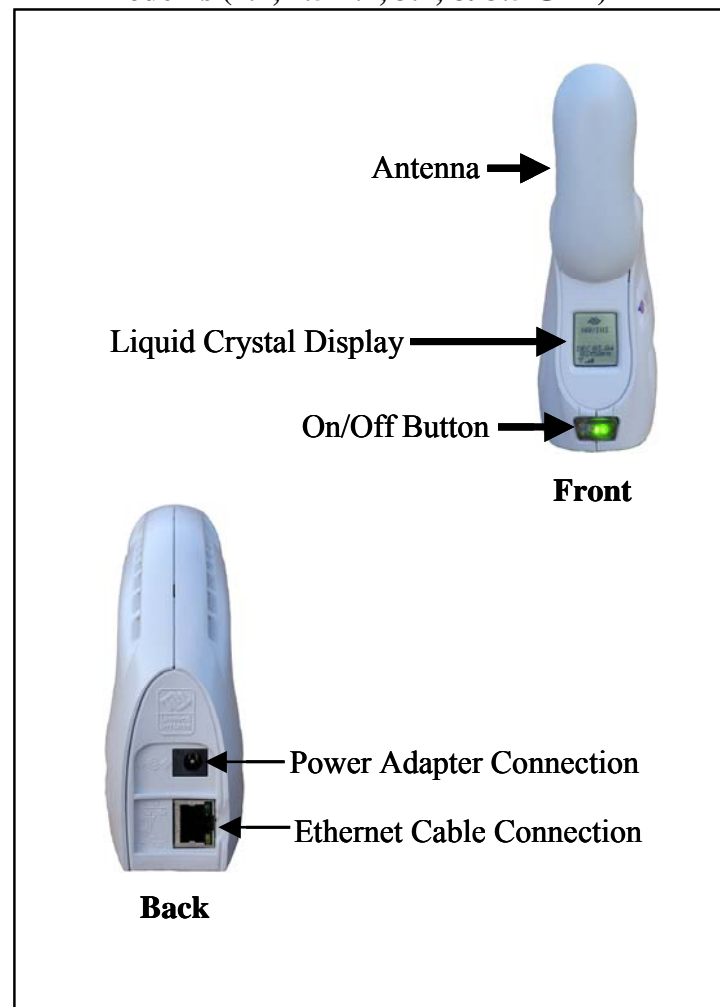
This manual will guide you through the simple process of installing the LMX Modem and software, which has been developed to optimize the ease and convenience for you, our valued customer. The 2.6 GHz model is used in most of the illustrations in this manual where there are no differences in the 2.4, 2.5-2.7, 3.4 & 3.5 GHz models.

If you experience any difficulties with your unit, please contact your Service Provider or the vendor from whom you obtained your LMX Modem.

Physical Characteristics

The following figure shows the physical characteristics of the Ripwave-MX LMX Modems.

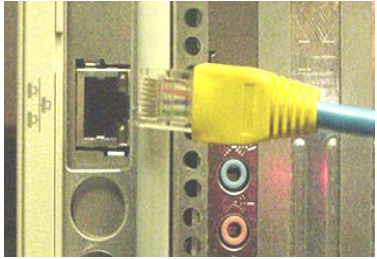
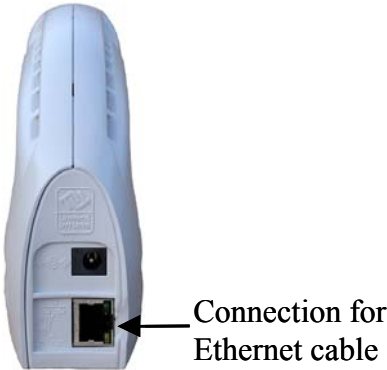


LMX Modems (2.4, 2.5-2.7, 3.4, & 3.5 GHz)




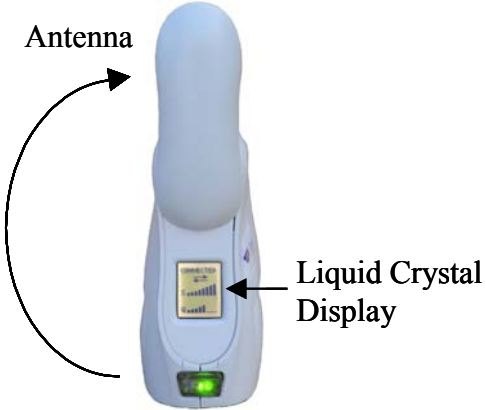

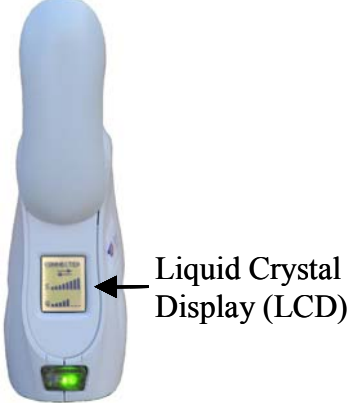
Installing the LMX Modem

(See, also, Addendum 1)

The following instructions are for the installation of the LMX Modem. Please read all instructions before attempting the installation. It is advisable to turn off the computer and the LMX Modem before performing the installation.

Step	Action	Illustration
1.	Connect the Ethernet cable to the Ethernet port on the computer.	
2.	Connect the other end of the Ethernet cable to the LMX Modem.	
3.	<p>Connect the AC power adapter to the LMX Modem. Plug the other end into a 110/220 VAC 60/50 Hz outlet.</p> <p> CAUTION! Only use the AC power adapter specifically supplied with the LMX Modem. Using any other adapter may cause damage to the Modem.</p>	

Installing the LMX Modem, continued

Step	Action	Illustration
<p>4.</p> 	<p>Rotate the antenna on the LMX Modem clockwise 180 degrees to the UP position. This reveals the LMX Modem liquid crystal display (LCD).</p> <p>CAUTION! Rotation or movement of the antenna in any other direction may cause damage to the LMX Modem.</p>	
<p>5.</p>	<p>Turn the Modem ON by pushing the On/Off button in.</p>	
<p>6.</p>	<p>If the LCD turns on, proceed to Step 7. If not, there is a problem with the Modem or the AC power adapter. Check all cables for proper connection. If there is still a problem, contact the supplier who gave you the package.</p>	

Installing the LMX Modem, continued

Step	Action	Illustration
7.	Turn your computer on and log in.	
8.	Proceed to the “Troubleshooting” section of this manual.	

Accessing the Internet

With your Modem now installed, and both the Modem and computer power on, you should be able to surf the Internet! To access the Internet, open the web browser that is installed on your computer.

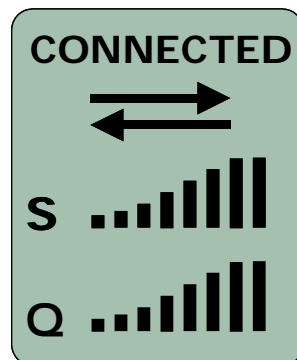
Troubleshooting

After installation, if you are experiencing difficulties with your Internet connection, please review the [Minimum Computing Requirements](#) and [Addendum 1](#) to ensure your computer meets those requirements. Next, go back over the installation procedures and ensure those steps were completed properly.

Assuming the computer requirements are met and the installation steps were completed as required, you will need to observe the signal sync and signal strength indicators on the LMX Modem. You also may need to install the monitoring software. This software, called the Navini Diagnostics, is provided on a CD that came in your Modem package. The Navini Diagnostics software assists in solving connection problems as well as providing other valuable information.

LCD Display

The LCD Display is a text-based display that provides valuable information about the LMX Modem’s operation. Used in conjunction with the monitoring software, you can troubleshoot signal issues, network connections, and power problems.



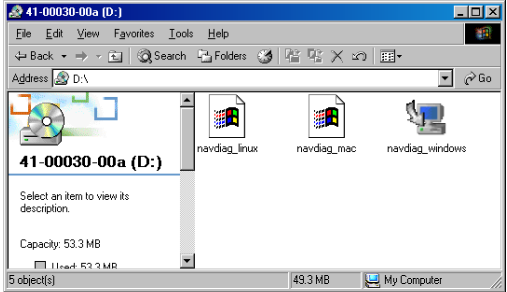
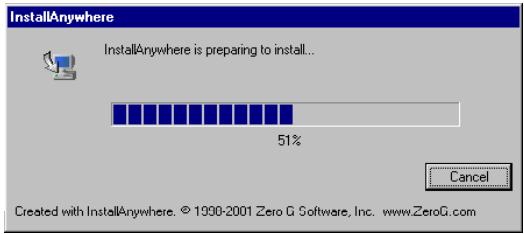
LCD Display, continued

The following table provides definitions for the LCD indications.


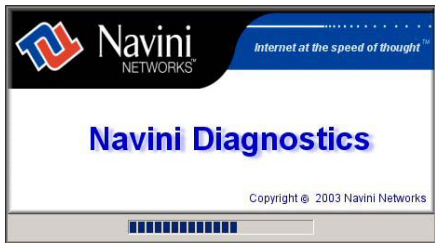
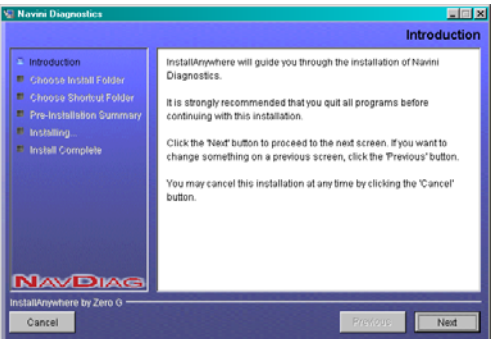

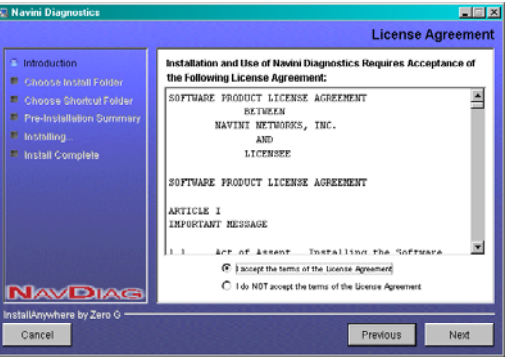
LCD Indicator:	
SEARCHING	
Blinking flash: Syncing	
CONNECTED: Locked-on	
S: Signal Strength Meter (SSI)	
0 bars	$S < 100$
1 bar	$-99 < S \leq -100$
2 bars	$-96 < S \leq -99$
3 bars	$-92 < S \leq -95$
4 bars	$-88 < S \leq -91$
5 bars	$-84 < S \leq -87$
6 bars	$-80 < S \leq -83$
7 bars	$-76 < S \leq -79$
8 bars	$-70 < S \leq -75$
Q: Signal Quality Meter (SNR)	
0 bars	$Q < 10$
1 bar	$10 < Q \leq -12$
2 bars	$13 < Q \leq -14$
3 bars	$15 < Q \leq -16$
4 bars	$17 < Q \leq -18$
5 bars	$19 < Q \leq -20$
6 bars	$21 < Q \leq -22$
7 bars	$23 < Q \leq -24$
8 bars	$Q \geq 24$
Activity Indicator:	
Flashing arrows: Traffic (both arrows flash)	
Blank: No Traffic Activity	

Installing Navini Diagnostics (NavDiag)



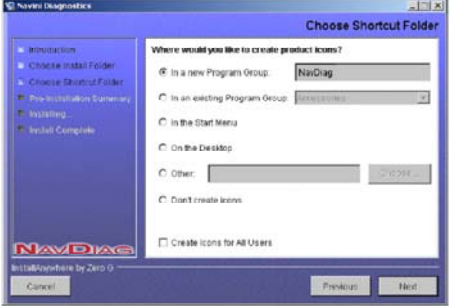
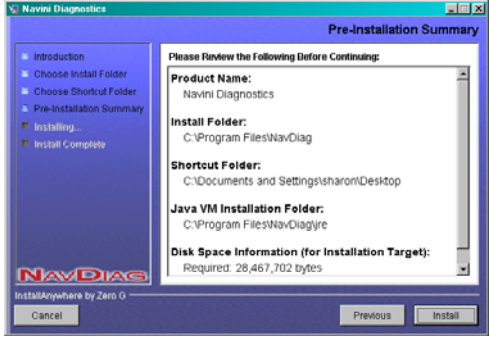
Note: The screenshots shown in these instructions were taken from a laptop with Windows 2000. If you have a Windows 98, XP, or ME operating system, the screens you see may vary from the screens shown in the instructions.

Step	Action	Illustration
1.	Shut down all programs, including anti-virus software programs, before installing the Navini Diagnostics software.	
2.	Insert the Navini Diagnostics Installation CD into the CD-ROM drive.	
3.	Open the CD by clicking on the My Computer icon. Double-click on the folder named Navini Diagnostics .	
4.	<p>Double-click on the icon for the file navdiag_windows.exe*. This will automatically start the installation of Navini Diagnostics.</p> <p>*If your PC is running Mac or Linux software, you will need the navdiag_mac.sit or navdiag_linux.bin file. Mac users will need the Snuffit extraction software.</p>	<p style="text-align: right;"><i>Example:</i></p> 
5.	The InstallAnywhere window appears. The progress bar indicates that InstallAnywhere has initialized.	<p style="text-align: center;">Windows 2000 Screen</p> 


Installing Navini Diagnostics (NavDiag), continued

Step	Action	Illustration
6.	The Navini Diagnostics Language screen appears*. Select a language and click OK to continue.	<p style="text-align: center;">Windows 2000 Screen</p> 
7.	The progress bar indicates the files being installed.	<p style="text-align: center;">Windows 2000 Screen</p> 
8.	The Navini Diagnostics Introduction screen appears. Click Next to continue.	<p style="text-align: center;">Windows 2000 Screen</p> 
9.	<p>The License Agreement screen appears. Read the Licensing Agreement. Select the I Accept option, and click Next to continue.</p> <p> NOTE: If the License Agreement is not accepted, you cannot install the software.</p>	<p style="text-align: center;">Windows 2000 Screen</p> 

Installing Navini Diagnostics (NavDiag), continued

Step	Action	Illustration
<p>10.</p> 	<p>The Choose Install Folder screen appears. Enter the name of the folder where you wish to install the software. Click Next to continue.</p> <p>NOTE: The default installation folder provided by the software is shown in the illustration.</p>	<p>Windows 2000 Screen</p> 
<p>11.</p>	<p>The Choose Shortcut Folder screen appears. Select the default, In a new Program Group, and click Next to continue.</p>	<p>Windows 2000 Screen</p> 
<p>12.</p>	<p>The Pre-Installation Summary screen appears. Review the contents for accuracy. Click Install to continue.</p> <p>For your installation and computer, this screen may have different information than what is shown in the illustration.</p>	<p>Windows 2000 Screen</p> 
<p>13.</p>	<p>The Installing screen will display as the application files are loaded.</p>	

Installing Navini Diagnostics (NavDiag), continued

Step	Action	Illustration
14.	At the Install Complete screen, click Done to close the window.	<p style="text-align: center;">Windows 2000 Screen</p> 

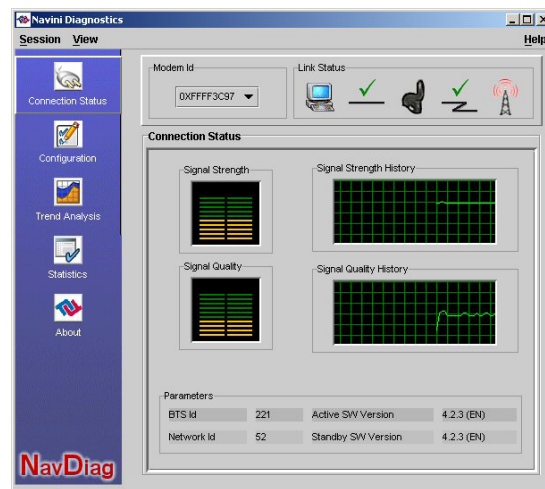
Troubleshooting Using Navini Diagnostics (NavDiag)

To open the Navini Diagnostics software application, double-click on the Navini Diagnostics icon on your desktop.



Navini Diagnostics.lnk

The Connection Status screen will open and display data if the Modem is in session. The screen will refresh live data every second.



Troubleshooting Using Navini Diagnostics (NavDiag), continued

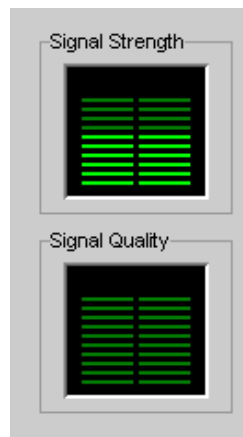
The icons represent the PC, the connection between the PC and the Modem, the Modem, the connection between the Modem and the Base Station, and the Base Station to which the Modem is communicating. Check marks over the connections indicate working connections.



If the connection between the PC and the Modem or between the Modem and the Base Station is interrupted, an "X" is positioned over the corresponding icon.



The Signal Strength and Signal Quality are dynamic bar areas that indicate how well your Modem is receiving signals from the Base Station. In particular, the Signal Strength bar area graphically represents the strength of the Absolute BTS Synchronization Signal received by the Modem. The strength of the signal is represented by a group of colored bars. The higher the pile of bars goes, the stronger the signal is. The color of the bars also gives an indication of the strength of the signal. Green lines indicate an excellent signal. Orange lines indicate a good signal while red lines indicate a weak signal.



Troubleshooting Using Navini Diganostics (NavDiag), continued

The Signal Quality bar area graphically represents the Signal-to-Noise Ratio (SNR) of the downlink access code channel (ACC) received by the Modem. Again, the quality of the signal is represented by a group of colored bars. The higher the pile of bars goes, the better the SNR of the signal. The color of the bars also gives an indication of the quality of the signal. Green lines indicate an excellent signal. Orange lines indicate a good signal while red lines indicate a weak signal.

To increase the strength and quality of the signal, change the location of the LMX Modem. Try moving it closer to a window, to a higher location, away from other wireless devices (microwave ovens, cordless phones), and away from metal objects (shelves, file cabinets). As the LMX Modem is repositioned, observe the Signal Strength and Signal Quality bars. Position the Modem for maximum signal strength and quality.

The History graphs plot the change in signal strength and signal quality over time. The graphs cover the last minute and are updated every second. Read the graphs from right to left. The right side of the graph represents the most recent status of your Modem.



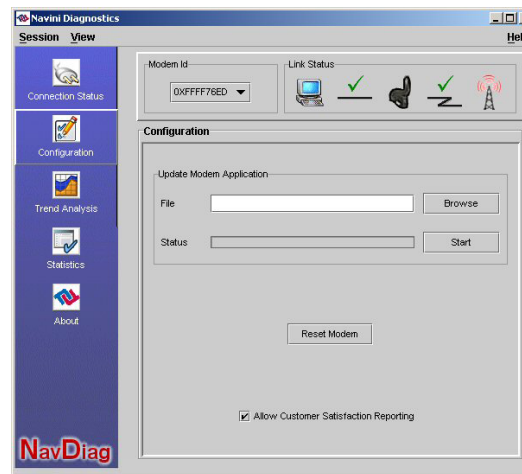
At the bottom of the Connection Status screen, are four parameters. These parameters are BTS ID, Network ID, Active SW Version, and Standby SW Version. The BTS ID and Network ID indicate the BTS to which the Modem is currently synchronized and the network in which the Modem is operating. Active SW Version and Standby SW Version indicate the version number of the software currently loaded in the “active side” and “standby side” of the Modem’s flash memory.

Troubleshooting Using Navini Diganostics (NavDiag), continued

The two letters in parenthesis following the release number indicate the type of software load. JD indicates Joint Detection, while EN indicates Enhanced Nulling.

Parameters			
BTS Id	221	Active SW Version	4.2.3 (EN)
Network Id	52	Standby SW Version	4.2.3 (EN)

On the left-hand side of the screen, there are five screen options: Connection Status, Configuration, Trend Analysis, Statistics, and About. The following screen will appear when you press the Configuration button.

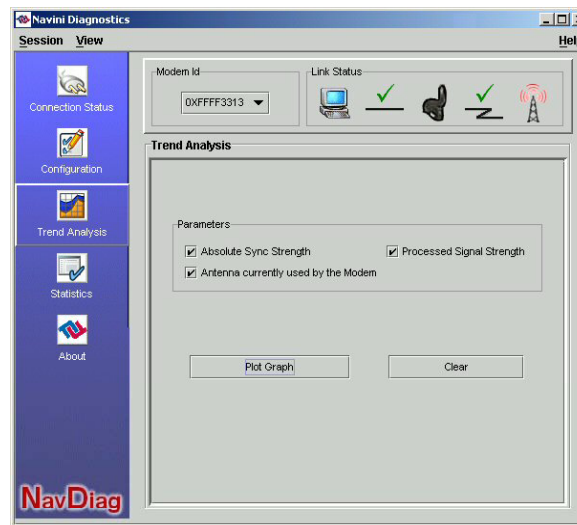


The Configuration screen enables you to update your Modem's software if you are so directed by your Service Provider. If you must update your Modem's software, your Service Provider will provide you with instructions regarding what to do.

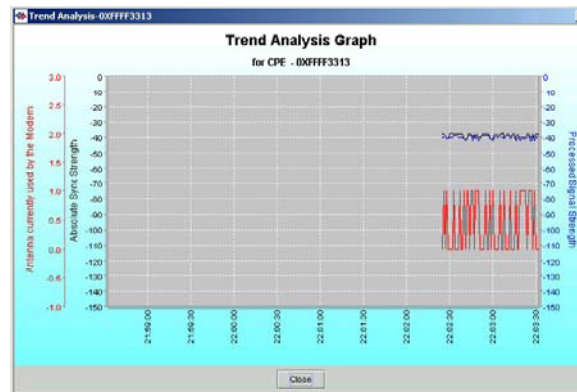
The Allow Customer Satisfaction Reporting box gives you control over whether your Service Provider is allowed to monitor your Modem using the remote CPE Logging function and to use your computer to store the CPE log files created by this function. By default, this box is checked which means the Service Provider can monitor your Modem.

The Trend Analysis screen enables you to view how some Modem parameters evolve over time. With this screen, you can select up to three parameters to plot. To view the Trend Analysis screen, press the Trend Analysis button.

Troubleshooting Using Navini Diganostics (NavDiag), continued

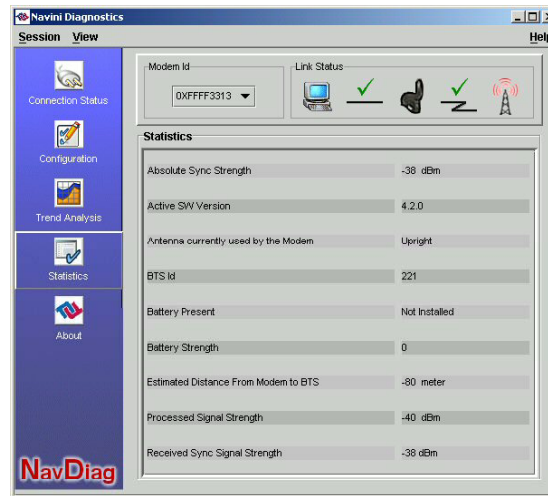


By pressing the Plot Graph button, the following screen will appear. This screen displays the value of the selected parameters over the last five minutes, updated once every second. The graphic scrolls from right to left.



To view the Statistics screen, press the Statistics button. The statistics screen enables you to view the current value of selected parameters. These values are updated as they change over time.

Troubleshooting Using Navini Diganostics (NavDiag), continued



The About screen provides vital information such as the version of the Navini Diagnostics software currently installed in your computer. It also provides a website address and telephone number where you can contact your Service Provider. To view the About screen, press the About button. An example of the About screen follows.

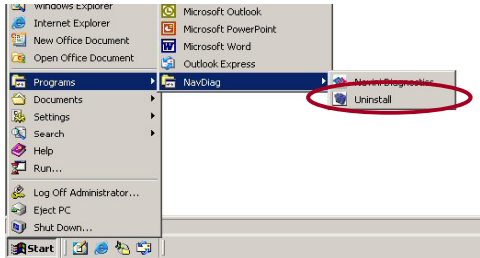




A Help button appears on the top right corner of all the NavDiag windows. The Help button gives you two options. The first option, On NavDiag, provides help text on the functionality of the NavDiag program. The second option, About NavDiag, is equivalent to clicking on the About icon.

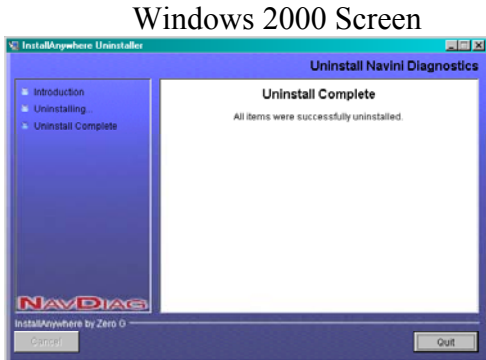
Uninstalling Navini Diagnostics (NavDiag)

If for some reason you need to uninstall the Navini Diagnostics software, e.g., to upgrade your Operating System software, follow the procedure below.

Note: The screen shots shown in these instructions were taken from a laptop with Windows 2000. If you have a Windows 98, XP, or ME operating system, the screens you see may vary from the screens shown in the instructions.

Step	Action	Illustration
1.	On your computer screen lower left corner, click on Start > Programs > NavDiag > Uninstall.	<p style="text-align: center;">Windows 2000 Screen</p> 
2.	The Install-Anywhere Uninstaller screen appears. Click Uninstall.	<p style="text-align: center;">Windows 2000 Screen</p> 
3.	The screen will indicate the application files are uninstalled.	<p style="text-align: center;">Windows 2000 Screen</p> 

Uninstalling Navini Diagnostics (NavDiag), continued

Step	Action	Illustration
4.	The Uninstall Complete screen appears when finished. Click on Quit to close the Uninstall screen.	
5.	Restart the PC to complete the uninstall process. This will ensure the uninstall process completes successfully.	

Optional Batteries

The LMX Modems have two optional external battery packs associated with them. These battery packs are the Standard External Battery Pack (S-EBP) and the Heavy Duty-External Battery Pack (HD-EBP). The Standard External Battery Pack (S-EBP) provides approximately 16 Watt-Hours of power while the Heavy Duty-External Battery Pack (HD-EBP) provides approximately 44 Watt-Hours of power.

This section describes how to install and charge the optional external battery packs.

Optional External Battery Packs

The external batteries are not installed inside the Modem. Instead they are connected to the Modem. Before we discuss how to connect and charge the external battery packs, let's discuss the similarities and differences between the Standard External Battery Pack (S-EBP) and the Heavy Duty External Battery Pack (HD-EBP).

- Both the S-EBP and HD-EBP can be used with any of the LMX Modems.
- The HD-EBP provides 44 Watt-Hours of power while the S-EBP provides 16 Watt-Hours of power.

Optional External Battery Packs, continued

- The amount of time the S-EBP and HD-EBP can operate before recharging varies. This time is dependent of the usage run on the LMX Modem. The following table shows example approximations for how long the batteries can run before a recharge is required.

Usage	Approximate hours of Usage Before Recharge Required	
	S-EBP	HD-EBP
Standard	2	Up to 6
Moderate	1.5	Approximately 4.0
Heavy	1	Up to 3.5

Connecting the Standard External Battery Pack (S-EBP)

To connect the S-EBP to any of the LMX Modems, plug the battery's pig-tail cord into the input socket located on the back of the Modem.



The Indicator Light on the Standard External Battery Pack (S-EBP)

The S-EBP has one indicator light that resides on top of the unit. This light has four states associated with it. The states are described below.

- Light is *off* when any of the following apply:
 - The battery is not connected to a Modem or to the battery charger
 - The battery is connected to a Modem but the Modem is off
 - The battery is connected to a Modem and the Modem is on but the battery power is depleted
- Light is *green* when the battery is on and fully charged.
- Light is *amber* when the battery has power but is no longer fully charged. If the battery is connected to the battery charger, an amber light means the battery is being charged.
- Light is *red* when the battery is low on power. When the battery is low, it has approximately 15% of its charge left.

Charging the Standard External Battery Pack (S-EBP)

The S-EBP will need to be recharged when the battery is connected to a Modem and the Modem is turned on but the LED on top of the battery remains off (indicating the battery has no power) or is red (indicating the battery level is low).

To recharge the S-EBP, use only the 12V charger that came with the S-EBP. Using any other charger may damage the battery. To charge the S-EBP, plug the 12V adapter into the 12V input socket on the S-EBP.


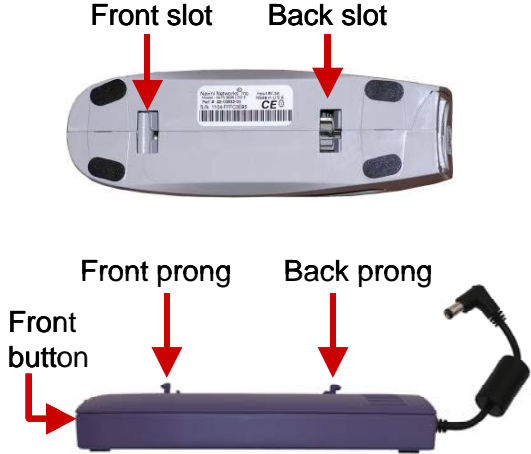


NOTE: The battery may charge while it is connected to a Modem.


NOTE: Do not attempt to plug the 12V adapter into the Modem as this may harm the Modem.

Connecting and Disconnecting the Heavy Duty External Battery Pack (HD-EBP)

If you have a HD-EBP, the battery pack is installed in the bottom of the LMX Modem. To install and or remove the battery pack, follow the steps based on your model of Modem.

Step	Action	Illustration
1.	Depress the front button on the HD-EBP so that the front prong moves in towards the center of the HD-EBP.	
2.	Place the back slot of the LMX Modem over the back prong of the HD-EBP.	
3.	Place the front part of the opening on the LMX Modem over the front prong on the battery.	
4.	Release the button on the battery.	
5.	Press firmly down on the Modem so that the Modem firmly connects with the HD-EBP.	

Connecting and
Disconnecting the HD-
EBP, continued

Step	Action	Illustration
6.	Plug the HD-EBP's pig-tail cord into the power slot on the Modem.	
7.	To remove the battery pack from the Modem, unplug the pig-tail cord. Depress the front button on the HD-EBP. Lift the Modem off of the battery pack.	

The Indicator Light on the Heavy Duty External Battery Pack (HD-EBP)

The HD-EBP has one indicator light that resides on the back end of the unit near the pig-tail cord. This light has four states associated with it. The states are described below.

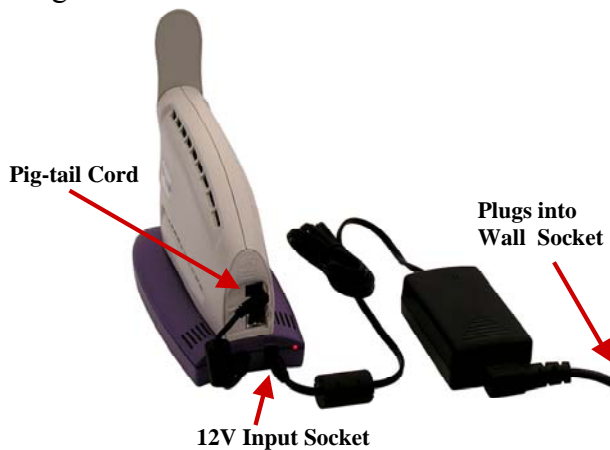
- Light is *off* when any of the following apply:
 - The battery is not connected to a Modem or to the battery charger
 - The battery is connected to a Modem but the Modem is off
 - The battery is connected to a Modem and the Modem is on but the battery is empty of power
- Light is *green* when the battery is on and fully charged.
- Light is *amber* when the battery has power but is no longer fully charged. If the battery is connected to the battery charger, an amber light means the battery is being charged.
- Light is *red* when the battery is low on power. When the battery is low, it has approximately 15% of its charge left.

Charging the Heavy Duty External Battery Pack (HD-EBP)

The HD-EBP will need to be recharged when the battery is connected to a Modem and the Modem is turned on but the LED on the back of the battery remains off (indicating the battery has no power) or is red (indicating the battery level is low).

To recharge the HD-EBP, use only the 12V charger that came with the HD-EBP. Using any other charger may damage the battery. To charge the HD-EBP:

- Plug the 12V adapter into the 12V input socket on the HD-EBP.
- Plug the other end of the adapter into an electrical wall socket.



NOTE: Do not attempt to plug the 12V adapter into the Modem as this may harm the Modem.

NOTE: The battery may charge while it is connected to a Modem.

Care & Maintenance

The LMX Modem is designed to give years of trouble-free service. To ensure operation, read the following care and maintenance instructions.

- Keep the Modem free of dust and moisture. If the Modem gets wet, use a towel to dry it immediately.
- Handle the Modem gently. Dropping it or mishandling it can cause damage to the plastic shell or the electronic circuitry.
- Keep the Modem away from high temperatures. Heat can cause damage to the plastic shell or the electronic circuitry.

Care & Maintenance, continued

- Use only a mild detergent and a soft, damp cloth to clean the Modem. Do not use any chemicals or abrasives to clean the plastic shell.
- If there is a problem with the Modem, do not attempt to repair it yourself. Report the problem to your Service Provider.
- If you are going to upgrade your Operating System after loading the Navini monitoring software (Navini Diagnostics), you must first uninstall the monitoring software prior to upgrading the OS. Otherwise, the monitoring software will not work. See Uninstall instructions in this Guide.
- The LMX Modem must be left powered ON whenever you shut down or restart any Windows 98 or ME platforms. If the Modem is off, a blue screen appears on the monitor. In the event this happens you will mostly likely have to power cycle the PC.

Upgrading the Modem

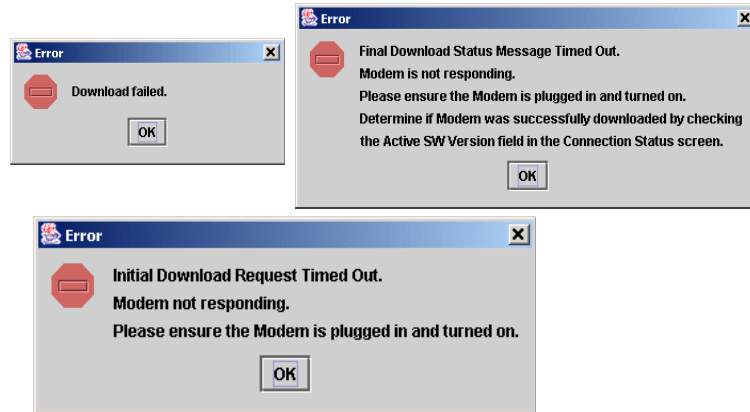
There are three different ways to upgrade the software that makes the Modem work.

- Your Service Provider may perform an over-the-air (OTA) upgrade, where the up-to-date software files are transferred wirelessly from the Base Station to your Modem.
- Your Service Provider may provide a downloadable web file or CD-ROM with software to be installed on your PC and used to upgrade the Modem. This method is used for systems that have a software release *prior* to 4.0.
- Your Service Provider may instruct you to use your Navini Diagnostics Tool to upgrade your Modem software load. This method is used for systems that have a software release of 4.0 or greater.

The latter two methods are used only if the Modem was not powered on during the OTA upgrade process. The OTA upgrade is normally transparent to the user; in other words, there should be no noticeable service interruption. The web or CD upgrade comes with instructions and takes a minimal amount of time to complete.

Note: If you use the Navini Diagnostics Tool to upgrade your Modem software load, the computer connected to your Modem

must already have an IP address. If your computer does not have an IP address, contact your Service Provider. If you attempt to upgrade your Modem software through the Navini Diagnostics Tool and the computer does not have an assigned IP address, you may see one of the following error messages:



ADDENDUM 1: Ripwave™ -MX Modem - PC Troubleshooting

- For Use With All Ripwave-MX LMX Modems and Navini Diagnostics Software -

PC Operating Systems

Prior to installing the Navini Diagnostics software, please check to insure that the PC Operating System meets the criteria given in the table below. If these criteria are not met, unpredictable problems may occur as a result of installation. It is recommended that the user have the latest Windows® updates installed prior to installing the Navini Diagnostics software.

Operating System	Ethernet interface	Notes
Win95	Supported	1, 2
Win98	Supported	2
Win98, 2nd ed.	Supported	2
WinME	Supported	2
Win 2000	Supported	2
Win NT 3.0/4.0	Supported	1, 2
Win XP	Supported	3

Note 1: Internet Explorer 3.0 or higher is required

Note 2: Requires Service Pack 1

Note 3: To load the Navini Diagnostics software, the user MUST have Administrative privileges.

Ethernet Interface

The Ethernet Modem may be connected to a PC via an Ethernet connection. Also, it is possible to connect multiple PC devices to a single Modem. The multi-PC configuration is transparent to the PC users and is analogous to a multi-PC configuration on a normal Ethernet LAN. Check with your Service Provider if multiple IP addressing is required for your particular configuration. The distinct advantage of the Ethernet Modem is that it connects to any device that has an Ethernet interface. This makes it ideal for small businesses that have a mix of devices, such as Unix machines, Apple Computers, etc. IP addresses can be assigned to the devices dynamically via a DHCP server, or as Fixed IP assignments, or Point-to-Point Protocol Over Ethernet (PPPoE).

Multiple Interface Environments

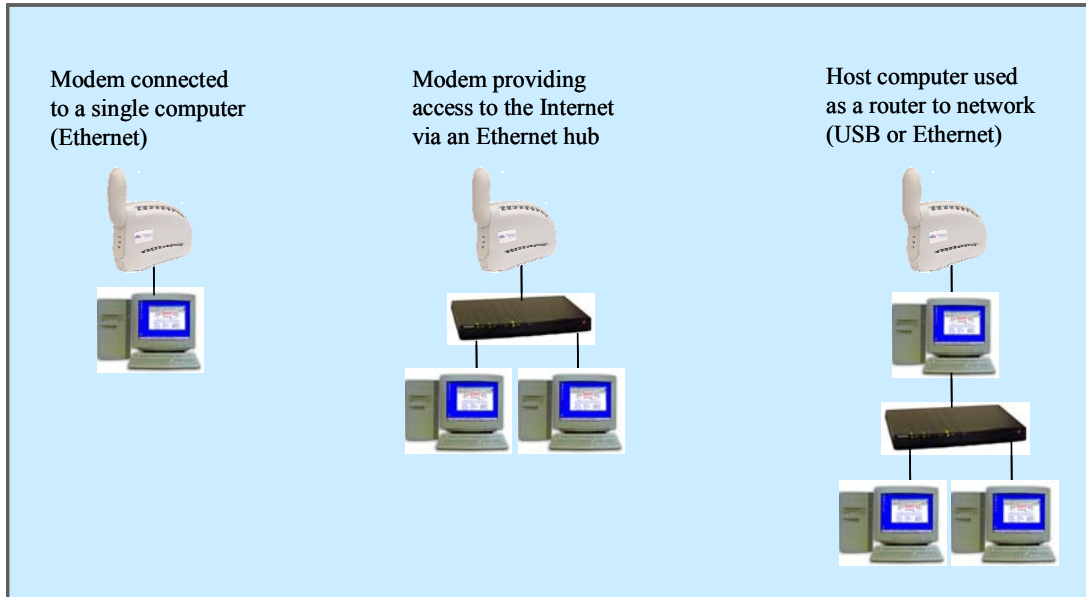
When a PC has an internal interface (for example, a Wireless Ethernet interface) in addition to the LMX Modem, you should do the following:

- If the wireless connection is not required, disable the internal wireless connection
- If the built-in wireless connection is required for local networking and wireline Ethernet is used via the LMX Modem for Internet connection, change the interface metric configuration so that the wireline interface's default gateway is used. (See your Operating System's User Guide.)

Routers

Neither the Navini LMX Monitor nor the Navini Diagnostics software will work if it goes through a router.

Configuration Options



Results of Correct Navini Diagnostics Installation

Experienced PC users can check the results of the Navini Diagnostics installation by looking at the log file that is created during the installation process. The log file is named "Navini_Diagnostics_InstallLog.log." It is located under **c:\Program Files\Navini Diagnostics**.

Install Begin: Tue Jul 20 12:15:22 CDT 2004
Install End: Tue Jul 20 12:15:30 CDT 2004

Created with Zero G's InstallAnywhere 4.5.3 Enterprise Build 1394

Summary

Installation: Successful with warnings.

2 SUCCESSES
1 WARNINGS
0 NONFATAL ERRORS
0 FATAL ERRORS

Action Notes:

None.

Install Log Detail:

Check Disk Space: C:\Program Files\NavDiag

Status: SUCCESSFUL

Additional Notes: NOTE - Required Disk Space: 29,363,315; Free Disk Space: 30,806,179,840

Install Directory: C:\Program Files\NavDiag\

Status: SUCCESSFUL

Get Registry Entry: Key: HKEY_LOCAL_MACHINE\SOFTWARE\Navini Networks\NavDiag, ValueName:

InstallDirectory

Status: WARNING

Additional Notes: WARNING - Win32Exception

Make Registry Entry: Key: HKEY_LOCAL_MACHINE\SOFTWARE\Navini Networks, Value Name: , Value Data:

Status: SUCCESSFUL

Make Registry Entry: Key: HKEY_LOCAL_MACHINE\SOFTWARE\Navini Networks\NavDiag, Value Name: , Value Data:

Status: SUCCESSFUL

Make Registry Entry: Key: HKEY_LOCAL_MACHINE\SOFTWARE\Navini Networks\NavDiag, Value Name:

InstallDirectory, Value Data: C:\Program Files\NavDiag

Status: SUCCESSFUL

Install Directory: C:\Program Files\NavDiag\Uninstall\

Status: SUCCESSFUL

Install Uninstaller: Navini Diagnostics (Install All Uninstaller Components)

Status: SUCCESSFUL

Install Directory: C:\Program Files\NavDiag\jre

Status: SUCCESSFUL

Install File: C:\Program Files\NavDiag\Uninstall\Uninstall NavDiag.exe

Status: SUCCESSFUL

Install File: C:\Program Files\NavDiag\Uninstall\Uninstall NavDiag.lax

Status: SUCCESSFUL

Install Directory: C:\Program Files\NavDiag\Uninstall\resource\

Status: SUCCESSFUL

Install File: C:\Program Files\NavDiag\Uninstall\resource\iawin32.dll

Status: SUCCESSFUL

Install File: C:\Program Files\NavDiag\Uninstall\resource\remove.exe

Status: SUCCESSFUL

Make Registry Entry: Key:
HKEY_LOCAL_MACHINE\SOFTWARE\Microsoft\Windows\CurrentVersion\Uninstall\Navini Diagnostics, Value Name:
DisplayName, Value Data: Navini Diagnostics
Status: SUCCESSFUL

Make Registry Entry: Key:
HKEY_LOCAL_MACHINE\SOFTWARE\Microsoft\Windows\CurrentVersion\Uninstall\Navini Diagnostics, Value Name:
UninstallString, Value Data: "C:\Program Files\NavDiag\Uninstall\Uninstall NavDiag.exe"
Status: SUCCESSFUL

Install Uninstaller: Navini Diagnostics (Install All Uninstaller Components)
Status: SUCCESSFUL

Create LaunchAnywhere: Navini Diagnostics.exe (Install All LaunchAnywhere Java Executable Components)
Status: SUCCESSFUL

Install File: C:\Program Files\NavDiag\Navini Diagnostics.exe
Status: SUCCESSFUL

Install File: C:\Program Files\NavDiag\Navini Diagnostics.lax
Status: SUCCESSFUL

Create LaunchAnywhere: Navini Diagnostics.exe (Install All LaunchAnywhere Java Executable Components)
Status: SUCCESSFUL

Install Directory: C:\Program Files\NavDiag\data\
Status: SUCCESSFUL

Install Directory: C:\Program Files\NavDiag\data\images\
Status: SUCCESSFUL

Install File: C:\Program Files\NavDiag\data\images\billboard.gif
Status: SUCCESSFUL

Install File: C:\Program Files\NavDiag\data\images\splash.gif
Status: SUCCESSFUL

Install File: C:\Program Files\NavDiag\data\images\buttonbar.gif
Status: SUCCESSFUL

Install File: C:\Program Files\NavDiag\data\images\about2.gif
Status: SUCCESSFUL

Install File: C:\Program Files\NavDiag\data\images\about1.gif
Status: SUCCESSFUL

Install File: C:\Program Files\NavDiag\data\images\about.gif
Status: SUCCESSFUL

Install File: C:\Program Files\NavDiag\data\images\uninstall.gif
Status: SUCCESSFUL

Install Directory: C:\Program Files\NavDiag\data\log\
Status: SUCCESSFUL

Install Directory: C:\Program Files\NavDiag\data\lib\
Status: SUCCESSFUL

Install File: C:\Program Files\NavDiag\data\lib\ctl.jar
Status: SUCCESSFUL

Install File: C:\Program Files\NavDiag\data\lib\navDiag.jar
Status: SUCCESSFUL

Install File: C:\Program Files\NavDiag\data\lib\jfreechart-0.9.13.jar
Status: SUCCESSFUL

Install File: C:\Program Files\NavDiag\data\lib\jcommon-0.8.8.jar
Status: SUCCESSFUL

Install File: C:\Program Files\NavDiag\data\lib\log4j.jar
Status: SUCCESSFUL

Install Directory: C:\Program Files\NavDiag\data\doc\
Status: SUCCESSFUL

Install Directory: C:\Program Files\NavDiag\config\
Status: SUCCESSFUL

Install File: C:\Program Files\NavDiag\config\NavDiag.lcf
Status: SUCCESSFUL

Install Directory: C:\Documents and Settings\luis\Start Menu\Programs\NavDiag\
Status: SUCCESSFUL

Create Shortcut: C:\Documents and Settings\luis\Start Menu\Programs\NavDiag\Navini Diagnostics.lnk
Status: SUCCESSFUL

Create Shortcut: C:\Documents and Settings\luis\Start Menu\Programs\NavDiag\Uninstall.lnk
Status: SUCCESSFUL

Install Directory: C:\Documents and Settings\luis\Desktop\
Status: SUCCESSFUL
Additional Notes: NOTE - Directory already existed

Create Shortcut: C:\Documents and Settings\luis\Desktop\Navini Diagnostics.lnk
Status: SUCCESSFUL

ADDENDUM 2: End User Software License Agreement

**between
Navini Networks, Inc.
and
Buyer**

ARTICLE 1 IMPORTANT MESSAGE

- 1.1 Act of Assent. Installing the Software indicates that you have read, understand and accept this License Agreement.

ARTICLE 2 LICENSES

- 2.1 Grant of License. The Software and related Documentation, are the intellectual property of Navini Networks, Inc. and are protected by law. Navini Networks, Inc. grants to Buyer a personal, nonexclusive, nontransferable worldwide license, for revocable use (as permitted herein) of the Software based on the terms and conditions of this License Agreement and the Master Supply Agreement to which it is attached. Buyer is permitted to install and use the Software on its server, but only in conjunction with the Navini Hardware. Buyer is not permitted to rent, sell or otherwise transfer the Software to any third parties.
- 2.2 Ownership Rights. Under this Agreement, Buyer does not acquire any rights of ownership in the Software and related Documentation and subsequent releases and versions licensed by Navini Networks, Inc. to Buyer pursuant to this License Agreement, whether in printed or machine-readable format. Buyer acquires only the right to use the Software and related Documentation subject to the terms and conditions of this Agreement. Buyer promises to keep the Software in confidence for the benefit of Navini Networks, Inc. and agrees to destroy or return the Software and all copies at such time as Buyer chooses to cease using the Software or upon termination or cancellation of this License Agreement for any reason.
- 2.3 Backup Copies. Buyer may copy the Software for safekeeping (archival) or backup purposes, provided that all such copies of the Software are subject to the provisions of this License Agreement, and also provided that each copy shall include in readable format any and all confidential, proprietary, and copyright notices or markings contained in the original.
- 2.4 Assignment. The rights granted in this License Agreement are restricted for use solely by Buyer and may not be assigned, transferred, or sublicensed, however Buyer may grant access to its server to End-Users. Each Buyer shall be authorized to make use of the Software in the form in which it is provided to Buyer solely for Buyer's own computer server location. Buyer represents that it will not use the Software for any purpose that is not expressly delineated in this Agreement. Further Buyer represents that it will comply with all export, re-export, and other laws in its use of the Software.

- 2.5 Suitability.
- a. Buyer alone is responsible for determining which software best suits Buyer's needs, for installing and operating the Software, and for the results obtained. Accordingly, each Buyer should determine its needs, and evaluate the Software's capabilities before making a final decision about licensing the software.
 - b. Navini Networks, Inc. makes no representation that the Software conforms to or satisfies any federal, state, or local laws. Buyer is encouraged to engage professional assistance from attorneys and engineers to evaluate the suitability of the Software for Buyer's use.
 - c. Navini Networks, Inc. makes no claims that the Software is suitable for Buyer's intended purposes.
- 2.6 Remote Digital Access. Navini Networks, Inc. reserves the right, but is not obligated to digitally access the Software for the purposes of upgrading and maintaining the Software.
- 2.7 U.S. GOVERNMENT RESTRICTED RIGHTS. All Software provided to the U.S. Government pursuant to solicitations issued on or after December 1, 1995 is provided with the commercial license rights and restrictions described elsewhere herein. All Software provided to the U.S. Government pursuant to solicitations issued prior to December 1, 1995 is provided with "Restricted Rights" as provided for in FAR, 48 CFR 52.227-14 (June 1987) or DFAR, 48 CFR 252.227-7013 (Oct 1988), as applicable

ARTICLE 3

TRADE SECRETS

- 3.1 Trade Secret. Navini Networks, Inc. considers the licensed Software covered by this License Agreement to be a trade secret. Navini Networks, Inc. does not disclose any information to Navini Networks, Inc. competitors or potential competitors. Buyer shall not disclose any design, code, or technological know-how gained by access to the Software to Licensor's competitors. Buyer shall not use design, code, or documentation gained by access to the Software to develop a similar technology or a competing software product. To attempt to or to do so, the Parties acknowledge, understand and agree, constitute a material breach of this License Agreement.
- 3.2 Third Party Intellectual Property. Buyer acknowledges, understands and agrees that the licensed Software covered by this License Agreement may contain Intellectual Property owned by Third Parties and duly licensed to Navini Networks, Inc. Copyright, Patent and other laws protect Third Party Intellectual Property manufactured with, marketed with, or otherwise bundled with the licensed Software. Buyer promises to keep such Third Party Intellectual Property in confidence to the benefit of the Third Party, agrees not to reverse engineer or otherwise decompile Third Party Intellectual Property, and agrees to stop using, destroy and/or return such Third Party owned Intellectual Property under the same terms and conditions as the licensed Software as set forth in this License Agreement.

ARTICLE 4 INDEMNIFICATIONS AND WARRANTY

- 4.1 Intellectual Property Indemnification; Entire Liability. ARTICLE 15 OF THE SUPPLY AGREEMENT TO WHICH THIS AGREEMENT IS ATTACHED STATES THE ENTIRE LIABILITY OF NAVINI NETWORKS, INC. WITH RESPECT TO INFRINGEMENT OF COPYRIGHTS, TRADE SECRETS, TRADEMARKS, PATENTS, AND OTHER INTELLECTUAL PROPERTY RIGHTS BY THE LICENSED SOFTWARE, DOCUMENTATION, OR ANY PARTS THEREOF, AND NAVINI NETWORKS, INC. SHALL HAVE NO ADDITIONAL LIABILITY WITH RESPECT TO ANY ALLEGED OR PROVEN INFRINGEMENT.
- 4.2 Warranty. EXCEPT AS GRANTED IN THE BODY OF THE SUPPLY AGREEMENT TO WHICH THIS LICENSE AGREEMENT IS ATTACHED, THE LICENSED SOFTWARE IS PROVIDED BY NAVINI NETWORKS, INC. "AS IS" AND WITHOUT WARRANTY OF ANY KIND OR NATURE, WRITTEN OR ORAL, EXPRESS OR IMPLIED, INCLUDING (WITHOUT LIMITATION) THE IMPLIED WARRANTIES OF MERCHANTABILITY AND FITNESS FOR A PARTICULAR PURPOSE. THIS LIMITATION OF WARRANTIES WAS A MATERIAL FACTOR IN THE ESTABLISHMENT OF THE LICENSE FEE CHARGED FOR EACH SPECIFIC ITEM OF SOFTWARE LICENSED.

ARTICLE 5 LIMITATION OF LIABILITY

- 5.1 Consequential Damages. TO THE MAXIMUM EXTENT PERMITTED BY THE APPLICABLE LAW, IN NO EVENT SHALL NAVINI NETWORKS, INC. OR ANY THIRD PARTY INVOLVED IN THE CREATION, PRODUCTION, DELIVERY, OR LICENSING OF THE SOFTWARE BE LIABLE FOR ANY LOST REVENUES, PROFITS OR DATA OR OTHER SPECIAL, INDIRECT, INCIDENTAL, CONSEQUENTIAL, OR PUNITIVE DAMAGES, HOWEVER CAUSED AND REGARDLESS OF THEORY OF LIABILITY, EVEN IF NAVINI NETWORKS, INC. HAS, OR SHOULD HAVE HAD ANY KNOWLEDGE, ACTUAL OR CONSTRUCTIVE, OF THE POSSIBILITY OF SUCH DAMAGES.
- 5.2 License-Fee Limitation. Except for the indemnification provisions of Article 15, Navini Networks, Inc.'s maximum liability for damages is limited to the license fees paid by Buyer under this Agreement for the particular licensed Software that caused the damages.
- 5.3 Loss of Data. Software error can cause a significant loss of data. Navini Networks, Inc. shall not be responsible for any loss of data. Navini Networks, Inc.'s responsibility is to correct the Software error as provided in this License Agreement or the Supply Agreement to which it is attached. It is Licensee's responsibility to have adequate backup procedures to protect Buyer from significant loss of valid data.

ARTICLE 6
OBJECT CODE ONLY-NO MODIFICATIONS

- 6.1 Modifications. In order to maintain the “trade secret” status of the information contained in the Licensed Software, Navini Networks, Inc. provides the Software in object-code form only. Buyer shall not modify, enhance, adapt, disassemble, translate, decompile or otherwise decode any portion of the object code of the Software module. Buyer shall not use the Software without a license to the Software object code. The object code contains the license number, date of license, and other license information. This information is placed in the object-code portions to prevent unauthorized and unlicensed distributions of the Software. Buyer shall not subvert or change any of this information. Further Buyer shall not make, full or partial, copies of any documentation whether printed or machine- readable media supplied with the Licensed Software unless expressly granted prior written permission by Navini Networks, Inc.
- 6.2 Responsibility for Damages. Buyer is subject to the provisions of the Supply Agreement with respect to the Software (including Section 16). Buyer is fully liable and responsible for any damages, indirect or direct, and costs that Navini Networks, Inc. may incur if Buyer appoints a subcontractor who accesses the Software without Navini’s prior written consent. Buyer shall defend, indemnify, and hold Navini Networks, Inc., its directors, officers, employees, agents, Authorized Partners, and other representatives harmless accordingly for all costs and direct and indirect damages sustained by Navini Networks, Inc. However, if the subcontractor is pre-approved by Navini in writing for access to the Software, then this Section shall not apply.
- 6.3 Copyright Notices. Buyer shall not remove any copyright or proprietary rights notice or identification that indicates Navini Networks, Inc. ownership from any part of the licensed Software, it being expressly understood and agreed that the existence of such copyright notice should not be construed as an admission or presumption that publication of the licensed Software has occurred.

END OF AGREEMENT

Copyright © 2001-2005 Navini Networks, Inc.

All rights reserved. Printed in the USA.

Navini Networks is a registered trademark. Zero-Install, Ripwave, and Unwired by Navini are trademarks of Navini Networks, Inc. Other product and company names mentioned herein may be trademarks and/or service marks of their respective owners. Rev. 052302