



Navini
NETWORKS™

Internet at the speed of thought™

Ripwave

2.6 GHz

User Guide

For Windows® 95 or later

Note: This User Guide is for Beta Users only. The contents are subject to change at any time during the Beta test.

TABLE OF CONTENTS

PERMISSIONS, TRADEMARKS, AND DISTRIBUTION..... VI

REGULATORY INFORMATION VII

SAFETY..... VIII

INTRODUCTION..... 1

RIPWAVE UNIT INSTALLATION..... 2

USB connections..... 2

Ethernet connections 7

RIPWAVE MONITOR SOFTWARE INSTALLATION..... 9

ACCESSING THE INTERNET 14

RIPWAVE UNIT INDICATOR LIGHTS 15

DISPLAYING THE RIPWAVE MONITOR..... 16

UNINSTALL RIPWAVE SOFTWARE 19



INSTALLING / CHARGING THE BATTERY 21

BETA USER GUIDE FREQUENTLY ASKED QUESTIONS 23


END USER LICENSE AGREEMENT..... 25

Symbols

Throughout this manual, the following symbols are used to designate precautions that need to be taken when performing the step. For your safety and protection of the equipment, observe these precautions when installing, operating, or servicing the equipment.

 Caution Symbol	This symbol indicates a potentially hazardous situation that may result in equipment damage or improper operation.
 Warning Symbol	This symbol indicates a potentially hazardous situation that may result in death or injury to personnel.

Notes

 Notes Symbol	This symbol indicates points, comments, or special attention that is required during a procedure.
---	---

Permissions, trademarks, and distribution

Copyright© November 2001 - 2002, Navini Networks, Inc. All information contained herein and disclosed by this document is confidential and the proprietary property of Navini Networks, Inc. and all rights therein are expressly reserved. Acceptance of this material signifies agreement by the recipient that the information contained in this document is confidential and that it will be used solely for the purposes set forth herein. Acceptance of this material signifies agreement by the recipient that it will not be used, reproduced in whole or in part, disclosed, distributed, or conveyed to others in any manner or by any means – graphic, electronic, or mechanical, including photocopying, recording, taping, or information storage and retrieval systems – without the express written permission of Navini Networks, Inc.

Navini Networks™, Internet at the Speed of Thought™, zero-install™, and Ripwave™ are registered trademarks of Navini Networks, Inc. Other product and company names mentioned herein may be trademarks and/or service marks of their respective owners.

Nothing herein constitutes any representation, warranty, assurance, or guaranty of any kind.

Because of continuing developments and improvements in design, manufacturing, and deployment, material in this document is subject to change without notification and does not represent any commitment or obligation on the part of Navini Networks, Inc.

Navini Networks, Inc. shall have no liability for any error or damages resulting from the use of this document.



The *Internet at the speed of thought™* logo and all other Navini Networks trademarks are the property of Navini Networks, Inc. Unauthorized usage is strictly prohibited without the express written permission of Navini Networks, Inc.

© 2001 - 2002 Navini Networks, Inc. All rights reserved.

Beta

Regulatory Information



Caution: This device is a radio frequency transmitter. It is required to comply with FCC RF exposure requirements for transmitting devices. A minimum separation distance of 8 inches (20 cm) or more must be maintained between the antenna and all persons during device operations to ensure compliance with the FCC's rules for Radio Frequency Exposure. If this minimum distance cannot be maintained, exposure to RF levels that exceed the FCC's limits may result. This equipment must not be co-located with any other transmitting antenna.

This equipment complies with part 21 of the FCC rules. Any changes or modifications not expressly approved by the manufacturer could void the user's authority to operate the equipment.

Safety

To optimize safety when using the Navini equipment, please read before using.

When using the Navini electronic equipment, always follow the basic safety precautions to reduce the risk of electrical shock, fire, and injury to people and/or property.

1. Follow all warnings and instructions that come with the equipment.
2. Do not use the equipment while you are in a bathtub, shower, pool, or spa. Exposure of the equipment to water could cause severe electrical shock (even death) or serious damage to the equipment.
3. Do not allow any type of liquid to come in contact with the equipment. Unplug the equipment from the power source before cleaning. Use a damp cloth for cleaning. Do not use any soaps or liquid cleaners.
4. Follow all airport and FAA regulations when using the equipment on or near aircraft.
5. Only operate the equipment from the type of power source(s) indicated in this manual (110 VAC or Navini supplied battery). Any other type of input power source may cause damage to the equipment.
6. Power the equipment using only the battery or the AC adapter cable provided, and in accordance with the instructions specified in the user manual.
7. Do not use a frayed or damaged power cord. Do not place the power cord where it can be stepped on or tripped over.
8. Do not touch wires where the insulation is frayed or worn unless the equipment has been disconnected from its power source.
9. Do not overload wall outlets, power strips, or extension cords. This can cause serious electrical shock or fire.
10. Do not place the equipment on an unstable surface. It can fall and cause injury or damage to the equipment.

Safety (continued)

11. Do not dispose of the equipment or the battery in a fire. They may explode. Check with the retailer for battery disposal guidelines.
12. Do not open or mutilate the battery. The battery contains substances that are toxic, corrosive, or harmful to humans. If battery substances come in contact with the skin, seek medical help immediately.
13. Do not disassemble the equipment. Removing covers exposes dangerous voltages or other risks and also voids the warranty. Incorrect reassembly can cause equipment damage or electrical shock. Only an authorized repair technician should service this product.
14. Do not expose the equipment to extreme hot or cold temperatures.
15. Do not use the equipment under the following conditions:
 - When the equipment has been exposed to water or moisture.
 - When the equipment has been damaged.
 - When the power cord is damaged or frayed.
 - When the equipment does not operate properly or shows a distinct change in performance.



CAUTION: RISK OF EXPLOSION IS POSSIBLE IF THE BATTERY IS REPLACED WITH ONE NOT SUPPLIED BY NAVINI NETWORKS. DISPOSE OF USED BATTERIES ACCORDING TO ENVIROMENTAL GUIDELINES.

Beta

Introduction

Congratulations for being selected to test the Navini Networks Ripwave product. This manual will guide you through the simple process of installing the Navini Networks Ripwave unit and software, which has been developed to optimize the ease and convenience for you, our valued customer.

The Ripwave Unit Installation includes instructions for both USB and Ethernet connections. Be sure to use the instructions that apply to your Ripwave model.



Note: You must have the Ripwave Unit model that is appropriate for your PC port: Model 2600U for a USB connection; Model 2600E for an Ethernet connection. At first glance, the models appear the same, but the ports and cables for the connections are different.

- A USB connection will function only with Windows[®] 98, Windows[®] 98SE, Windows[®] 2000, or Windows[®] ME. **It will not work with Windows[®] 95 or Windows NT[®].**
- An Ethernet connection will function with any Win32 Operating System (Windows[®] 95 or later).



USB
Model 2600U



Ethernet
Model 2600E

The Software Installation procedure is the same for either of the Ripwave models.

Minimum requirements:

Operating System:	Windows [®] 95 or later – Windows XP and Macintosh systems are not supported.
CPU:	Pentium level or higher
RAM:	32MB or the Operating System minimum (whichever is greater)
Hard Drive:	10MB free disk space

Before you start!

Verify the contents of your package. The contents should consist of the following items:

- Navini Networks Ripwave unit
- Ripwave unit AC power adapter
- PC-to-Ripwave unit cable (USB or Ethernet)
- Ripwave User Guide
- Ripwave Quick Installation Guide
- Navini Networks Ripwave Installation CD

If you do not find all of these items in your package, notify the supplier from whom you obtained your package.

Beta

Ripwave Unit Installation

USB connections

The following instructions are for the installation of the Ripwave Unit model 2600U using a USB connection. Please read all instructions before attempting installation. It is recommended that the computer and the Ripwave unit be turned off before performing the installation.

1. Connect the USB cable to the USB port on the computer as shown.



2. Connect the other end of the USB cable to the Ripwave unit as shown.

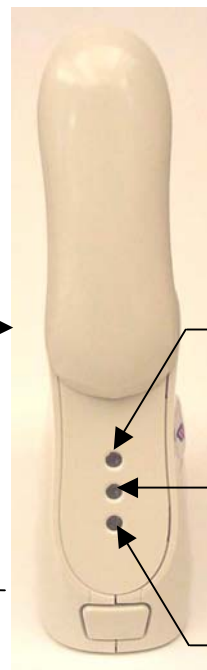
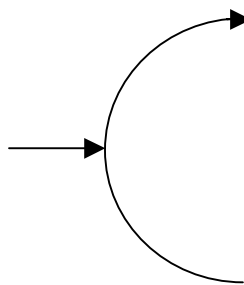


3. Rotate the antenna on the Ripwave unit clockwise 180 degrees to the 'UP' position. This reveals the Ripwave unit indicator lights.



Caution: Rotation or movement of the antenna in any other direction may cause damage to the Ripwave unit.

Rotate antenna clockwise 180 degrees



Signal Strength Indicator

Battery Indicator

Power Indicator

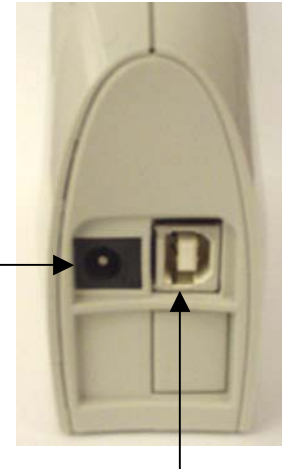
4. Connect the AC power adapter cable to the Ripwave unit. Plug the other end of the AC power adapter cable into a 110 VAC outlet.



Caution: Only use the AC power adapter supplied with the Ripwave unit. Using any other adapter may cause damage to the Ripwave Unit.

5. Push the On/Off switch to turn the Ripwave unit ON.

AC Power adapter cable jack



USB Port

6. If the green power-indicator light is on, proceed to step 7. If the green power-indicator light is not on, there is a problem with the Ripwave unit or the AC Power Adapter. Check all cables for proper connection. Otherwise, contact the supplier from whom you obtained the package.



Power on indicator

On/Off switch

7. Set the power switch on the computer to the ON position. When the system is up, log in to the computer.



Note: For Windows[®] 2000, you must be logged into an account having administrative privileges to install the Ripwave unit and its software.

8. Plug and Play will detect the Ripwave device now attached to the PC and will launch the Plug and Play application.

9. The Add New Hardware Wizard dialog box appears. Click **Next** to continue.



10. Insert the Navini Networks Ripwave installation CD in the CD-ROM drive.

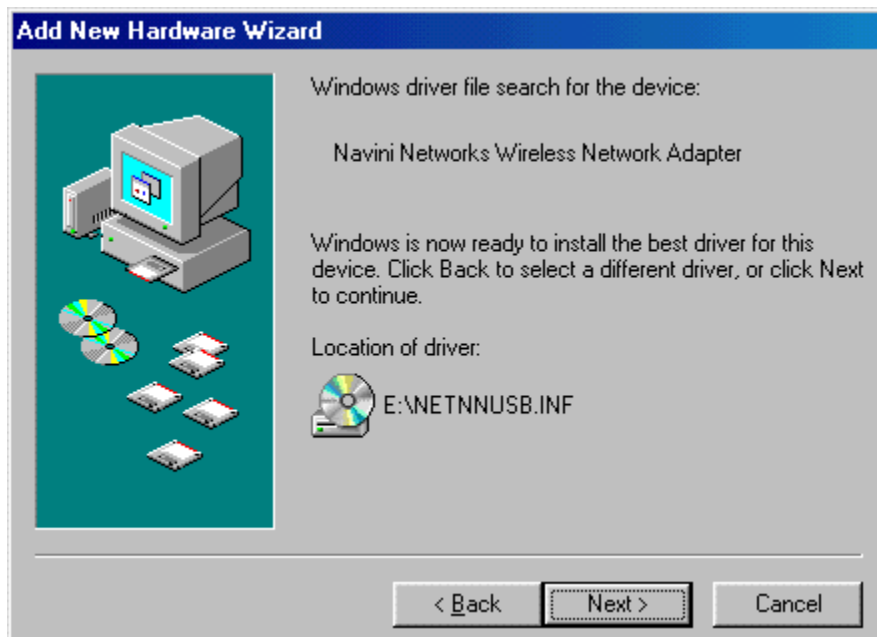
11. In the next dialog box, select the 'Search for the best driver for your device' option. Click **Next** to continue.



12. In the next dialog box, select the 'CD-ROM drive' checkbox. Click **Next** to continue.



13. In the next dialog box, confirm that the drive location is correct (the drive letter may be different than shown below) and that the file to be installed is NETNUSB.INF. Click **Next** to continue.



14. In the next dialog box, click **Finish**.

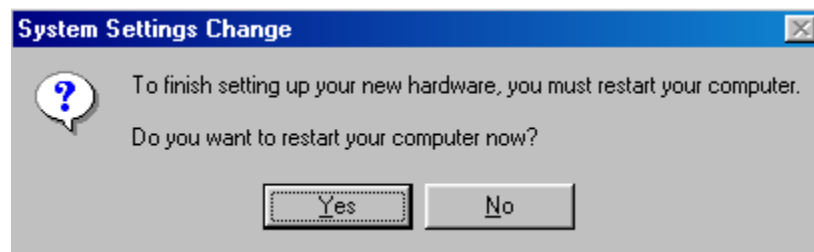


Note: For Windows[®] 98, a window may appear asking for drivers to be installed from the Windows[®] 98 setup disk. If so, insert the Windows[®] 98 setup disk in the CD-ROM drive and accept the defaults.

15. After clicking **Finish**, the System Settings Change window appears asking if you want to restart your computer now. Click **Yes**.



Note: You must restart your computer at this point before proceeding.

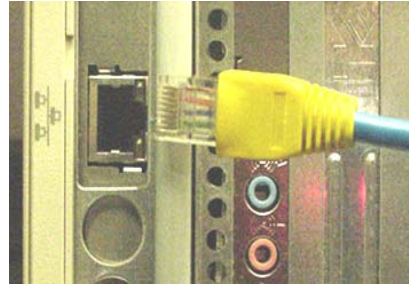


16. After the computer restart is complete, proceed to the [Ripwave Monitor Software Installation](#) on page 9.

Ethernet connections

The following instructions are for the installation of the Ripwave Unit model 2600E using an Ethernet connection. Please read all instructions before attempting installation. It is recommended that the computer and the Ripwave unit be turned off before performing the installation.


1. Connect the Ethernet cable to the Ethernet port on the computer as shown.



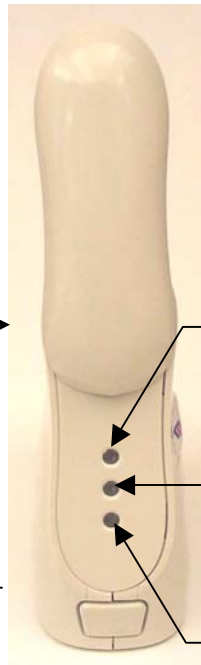
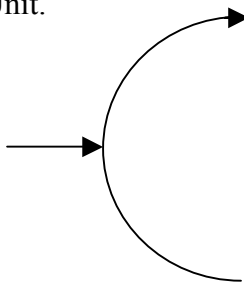
2. Connect the other end of the Ethernet cable to the Ripwave unit as shown.



3. Rotate the antenna on the Ripwave unit clockwise 180 degrees to the 'UP' position. This reveals the Ripwave indicator lights.

 **Caution:** Rotation or movement of the antenna in any other direction may cause damage to the Ripwave Unit.

Rotate antenna clockwise 180 degrees




Signal Strength Indicator

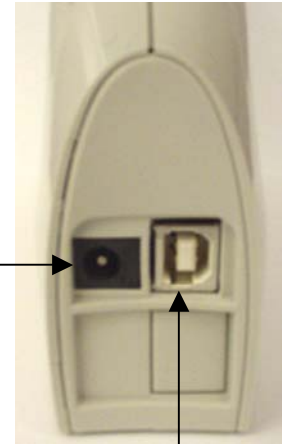
Battery Indicator

Power Indicator

4. Connect the AC power adapter cable to the Ripwave unit. Plug the other end of the AC power adapter cable into a 110 VAC outlet.

 **Caution:** Only use the AC power adapter supplied with the Ripwave unit. Using any other adapter may cause damage to the Ripwave Unit.

AC Power
adapter cable
jack



USB Port

5. Push the On/Off switch on the Ripwave unit to turn the unit ON.
6. If the green power-indicator light is on, proceed to step 7. If the green power-indicator light is not on, there is a problem with the Ripwave unit or the AC Power Adapter. Check all cables for proper connection. Otherwise, contact the supplier from whom you obtained the package.



Power on indicator

On/Off switch

7. Set the power switch on the computer to the ON position. When the system is up, log in to the computer.
8. Proceed to the [Ripwave Monitor Software Installation](#) on page 9.

Ripwave Monitor Software Installation



Notes:

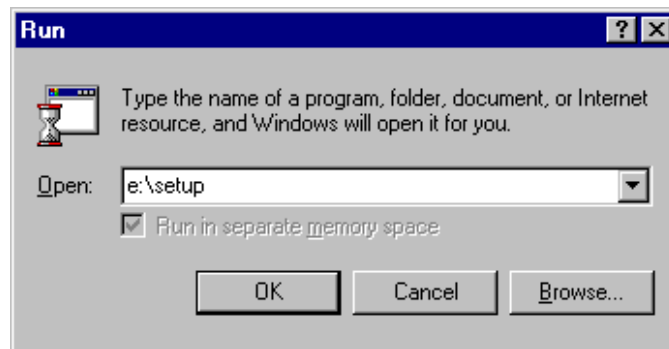
For Windows NT[®] and Windows[®] 2000, you must be logged into an account having administrative privileges to install the Ripwave monitor software.

For Ripwave monitor software installation on Windows[®] 95, Windows[®] 98, and Windows[®] 98SE Operating Systems, the operating system CD will be needed to complete the installation. If prompted, insert the operating system CD in the CD-ROM drive and accept the defaults.

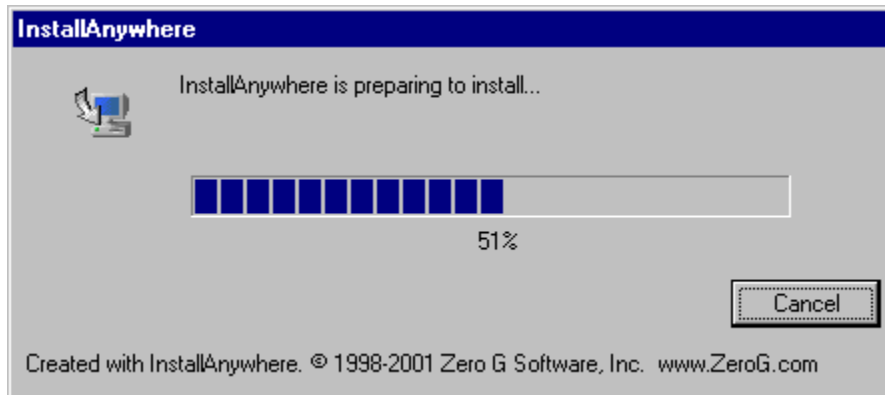
Installation procedures:

The following instructions are for installing the software that monitors the operation and performance of the Ripwave unit.

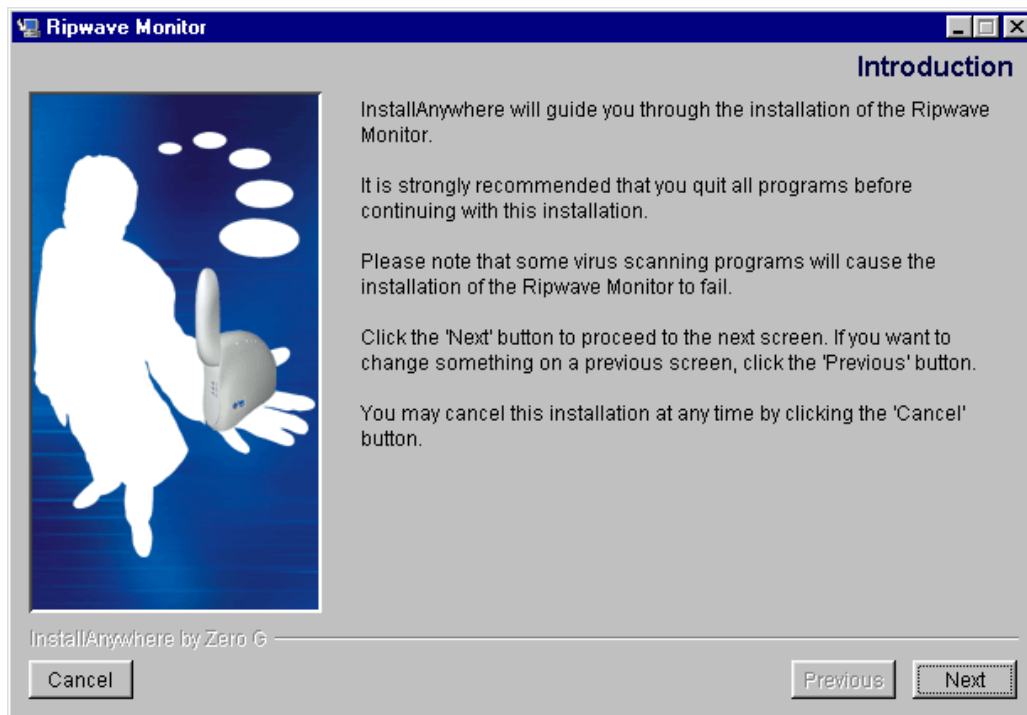
1. Shut down all programs before installing the Ripwave monitor software. This includes all anti-virus software.
2. Insert the Navini Networks Ripwave installation CD in the CD-ROM drive.
3. Click **Start > Run** at the bottom left corner of your screen. In the Run window, enter e:\setup (where “e” represents the CD drive; use the letter representing your specific CD drive) in the Open field. Click **OK** to continue.



4. The InstallAnywhere window appears. The progress bar indicates that InstallAnywhere has initialized.



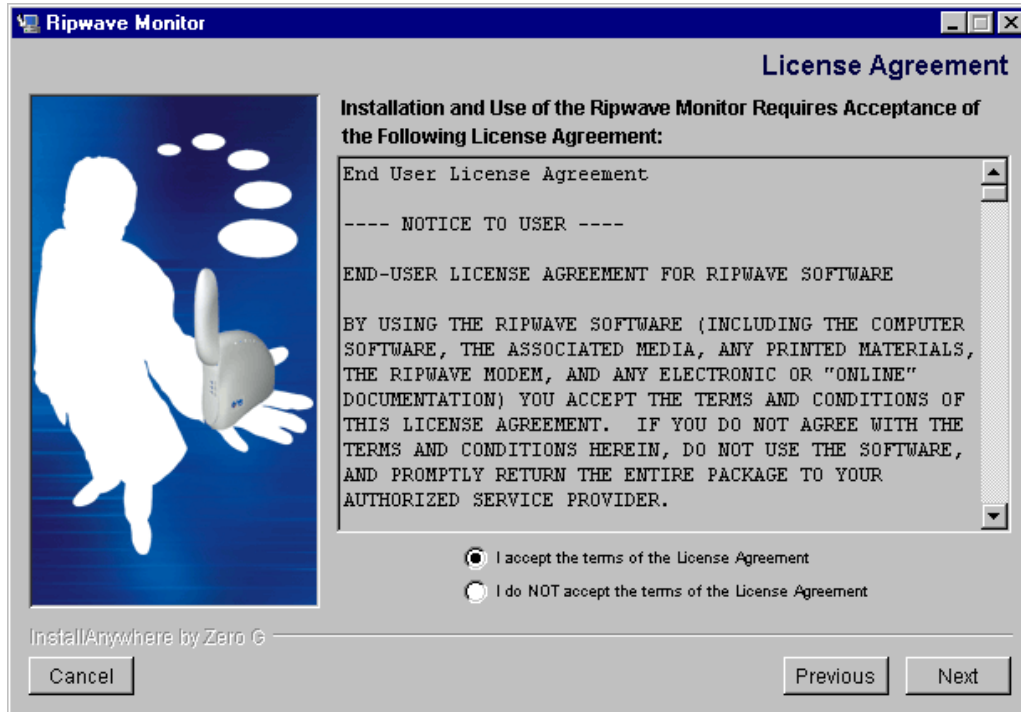
5. The Ripwave Monitor Introduction screen appears. Click **Next** to continue.



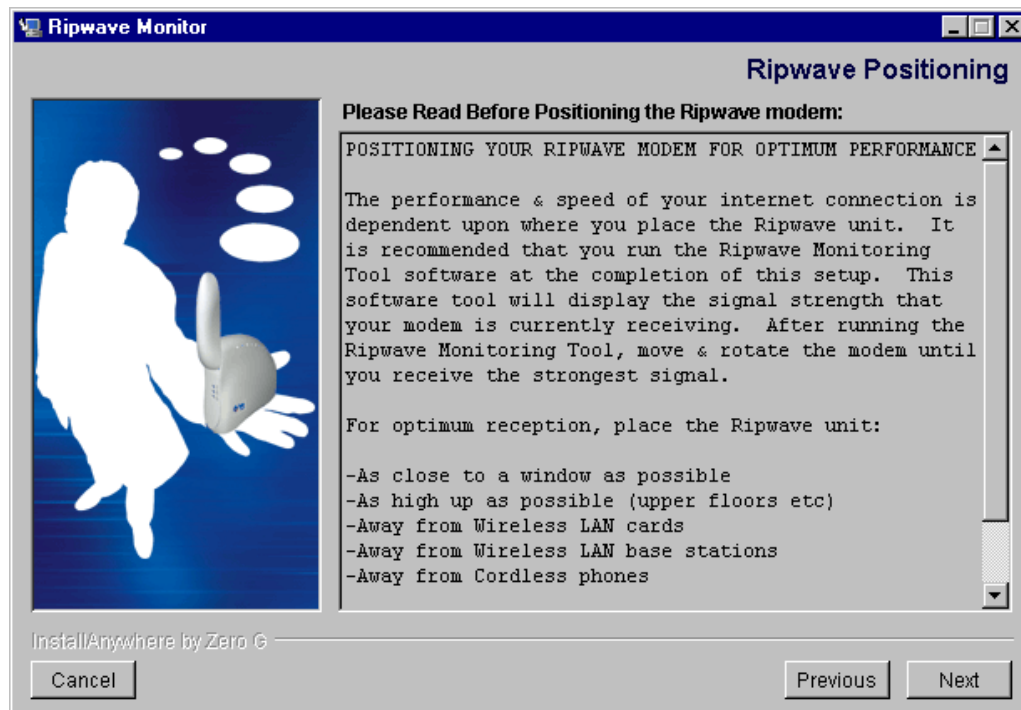
- The License Agreement screen appears. Read the Licensing Agreement. Select the **I accept** option, and click **Next** to continue.



Note: If the License Agreement is not accepted, you cannot install the software.



- The Ripwave Positioning screen appears. Read the screen for positioning the Ripwave unit for optimum performance. Click **Next** to continue.

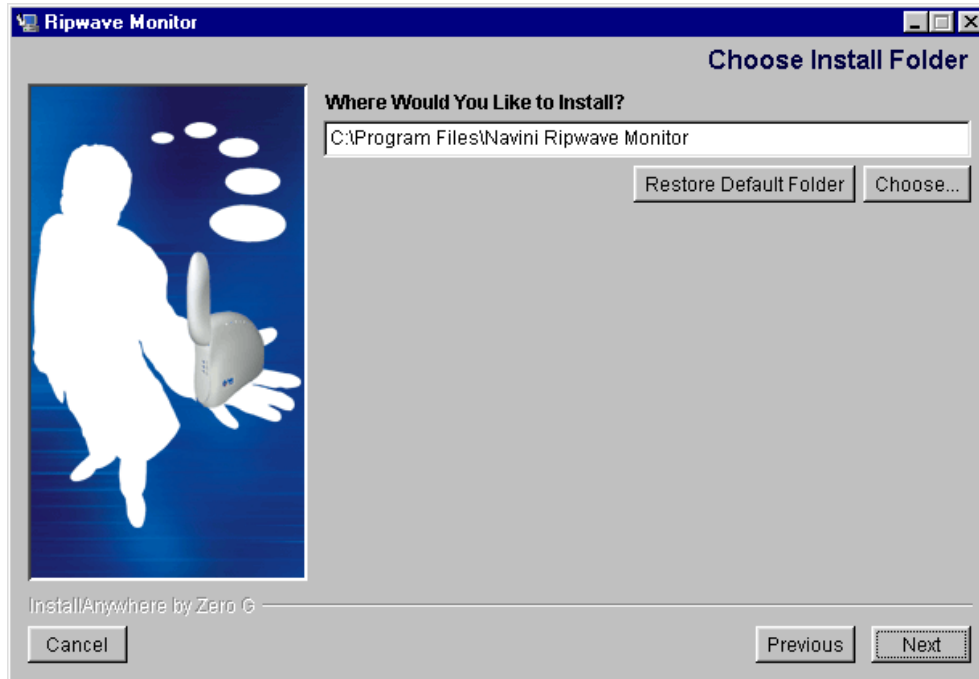


Beta

- The Choose Install Folder screen appears. Enter the name of the folder where you wish to install the software and click **Next** to continue.



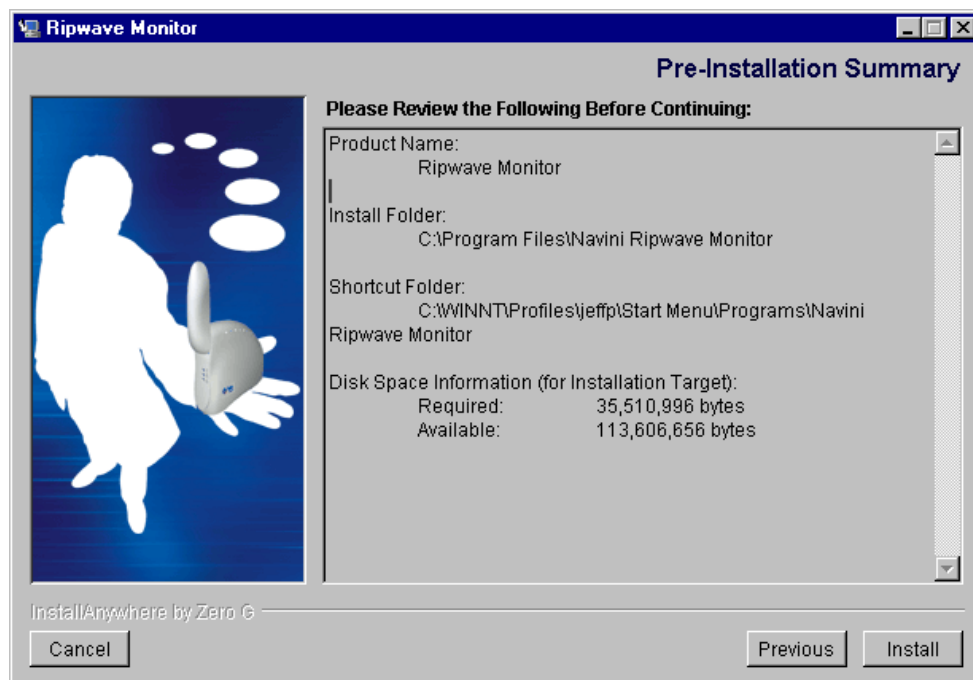
Note: The default installation folder provided by the installation software is shown below.



- The Pre-Installation Summary screen appears. Review the contents for accuracy. Click **Install** to continue.



Note: For your installation, this screen may have different information.

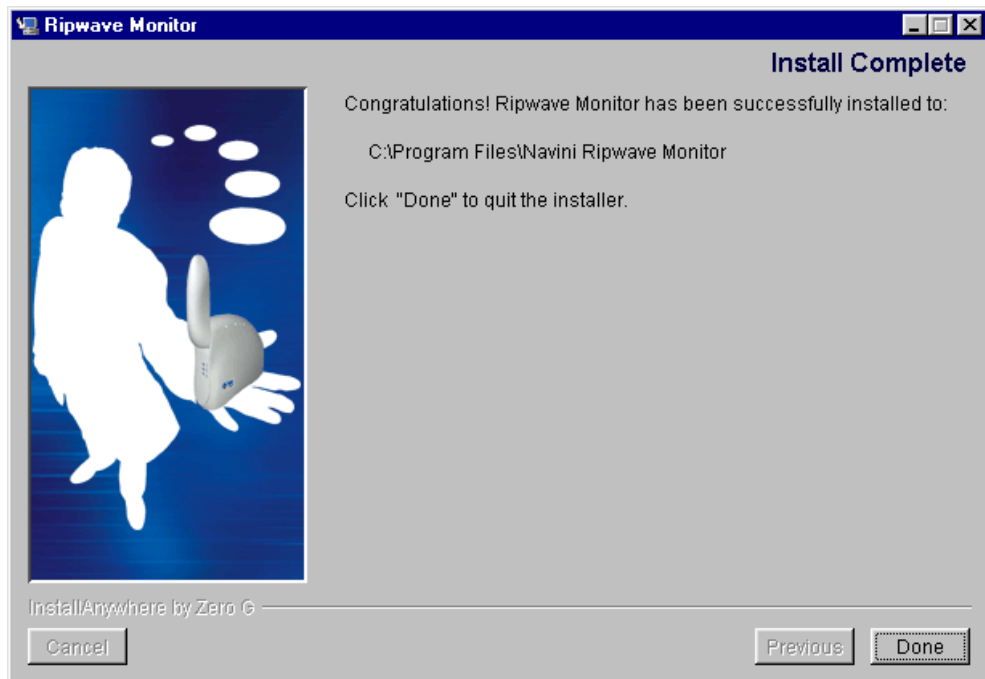


Beta

10. The Installing screen will display as the application files are loaded.



11. At the Install Complete screen, click **Done** to close the window.

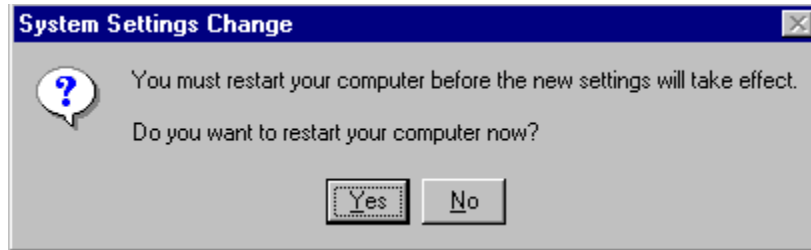


Beta

12. After clicking **Done**, the System Settings Change window appears asking if you want to restart your computer now. Click **Yes**.



Note: You must restart your computer at this point before proceeding.

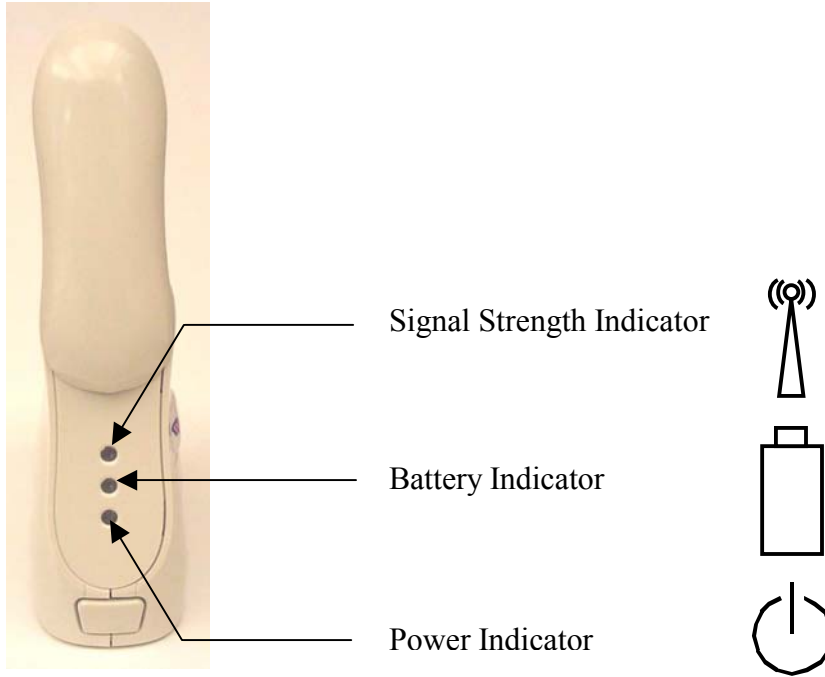


Accessing the Internet

To access the Internet, open the web browser that is installed on the computer. You should be able to surf the Internet.

Ripwave Unit Indicator Lights

The Ripwave unit has three LEDs that indicate the operating status of the unit. The indicator lights, along with the graphical representation next to it on the case, are as follows:



The indicator lights change color to designate the state of the item that it represents. The color designations are as follows:

Signal Strength Indicator:

- Flashing red – weak signal
- Flashing yellow – medium signal
- Flashing green – strong signal
- All three colors alternately flashing – no signal

Battery Indicator:

- Constant Yellow – battery is charging
- Constant red – battery less than 20% charged
- Flashing red – battery less than 10% charged
- Off – battery fully charged or not installed

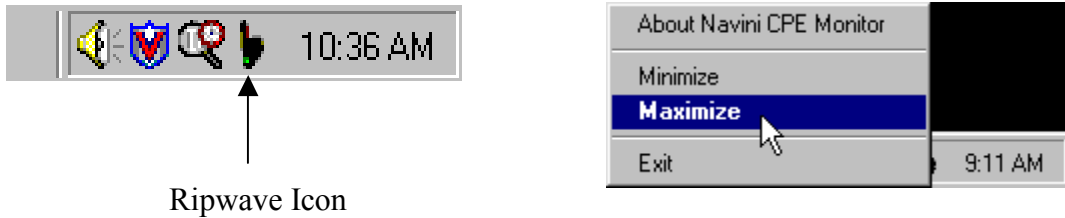
Power Indicator:

- Constant Green –The unit is on (AC or DC Power)

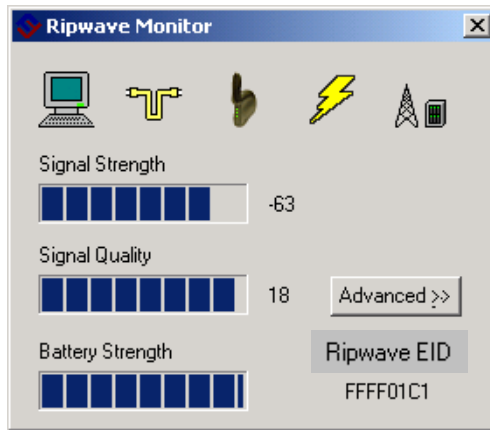
Displaying the Ripwave Monitor

Navini Networks provides Ripwave monitor software to assist you in solving problems that you encounter with reception or network connections. The Ripwave monitor provides information on the strength and quality of the incoming signal, battery strength, and checks the connectivity to the Internet Service Provider (ISP) network. The following steps will aid in using the Ripwave Monitor software.

1. To open the Navini Ripwave Monitor, right-click on the Ripwave icon in the toolbar tray and select Maximize.




2. The Ripwave Monitor window appears.



The icons shown across the top of the window represent each of the components and connections throughout the system. They are:



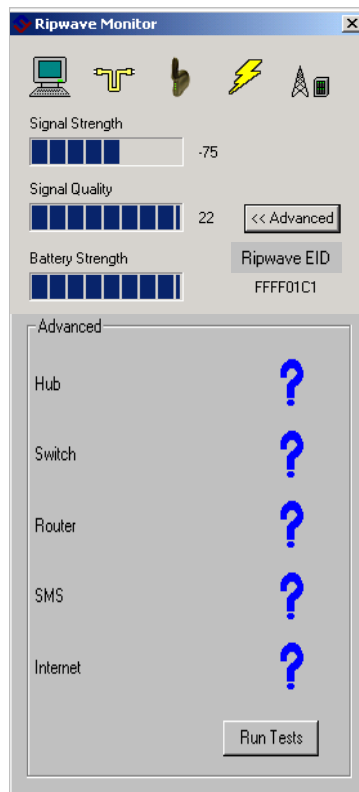
Beta

If a problem is detected with one of these components or if a connection is down, a red circle with a slash () will be positioned over the icon. For example, if the Ripwave to Base Station wireless connection goes down, the icon will change to:



When the system is on, the signal strength and quality strength will be displayed as dynamic bar graphs in the window. To increase the strength and quality of the signal, change the location of the Ripwave unit. Try moving it closer to a window, to a higher location, away from other wireless devices (microwave ovens, cordless phones), and away from metal objects (shelves, file cabinets). As the Ripwave unit is repositioned, observe the Signal Strength and Signal Quality bar graphs. Position the Ripwave unit for maximum signal strength and quality. The numbers to the right of the Signal Strength and Signal Quality bar graphs and the Ripwave EID number are for troubleshooting purposes only. During troubleshooting, the technician may ask you for these numbers. The Battery Strength bar graph indicates how much charge is left in the battery. If the unit is being run by the AC power adapter, the Battery Strength bar graph will show full strength.

3. To check connectivity to the ISP network, click the **Advanced** button on the Navini Ripwave Monitor. The window displays all of the connections to the ISP network.



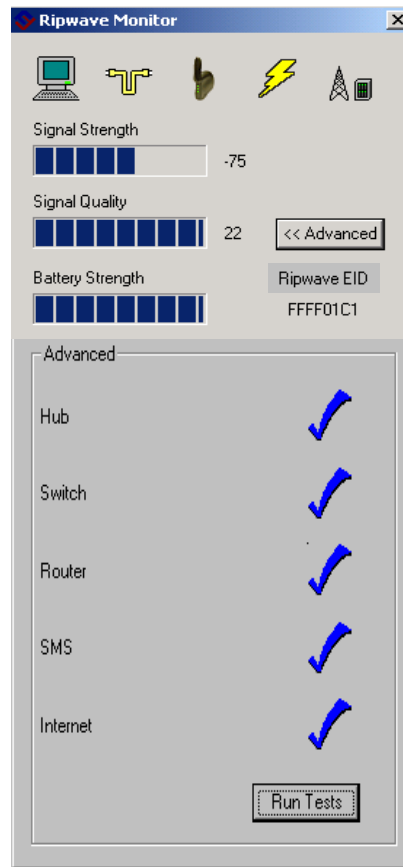
Beta

**Notes:**

If the connection from the Base Station to the Ripwave Unit is down, the Advanced button will be disabled (grayed out).

The connections listed in the **Advanced** window will vary depending on your ISP network. The above connections are used as an example.

4. Click on the **Run Tests** button to check the connections.



A blue checkmark indicates that the connection to the network is valid. If there is a problem, a red circle with a slash (⊘) will be displayed instead of the checkmark for the connection. If this appears, contact your ISP for service.

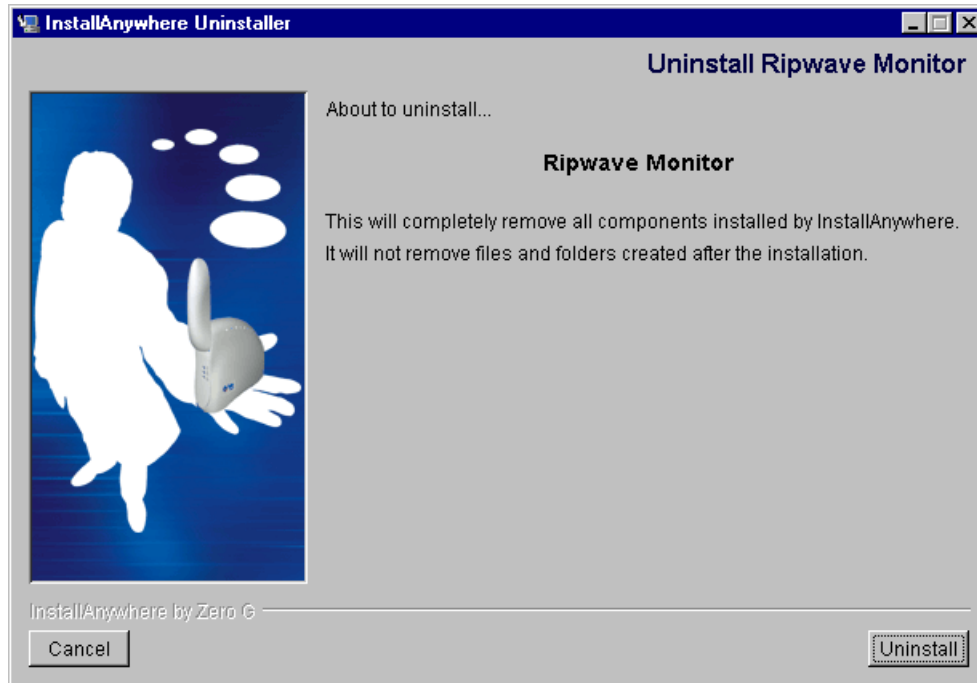


Note: The features of the Advanced and Run Tests buttons are to be used in conjunction with your ISP to resolve connection problems. There is no need to use these features unless you are experiencing problems with the Ripwave unit.

Beta

Uninstall Ripwave Software

1. To uninstall the Ripwave monitor software, click **Start > Programs > Navini Ripwave Monitor > Uninstall Ripwave Monitor**. The InstallAnywhere Uninstaller screen appears. Click **Uninstall**.

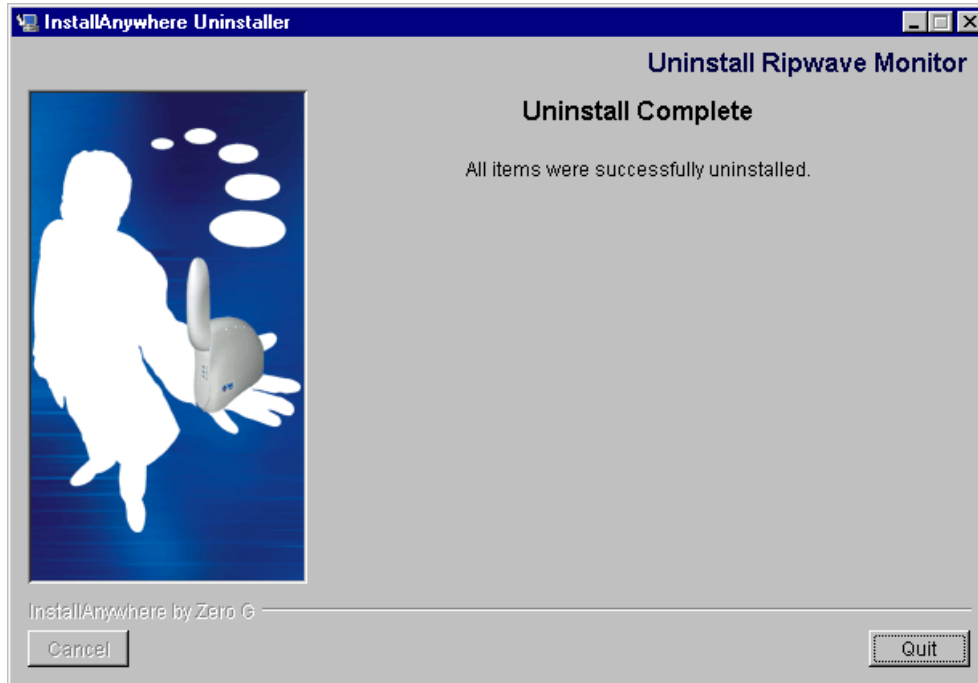


2. The screen will cycle through as the application files are uninstalled.



Beta

3. The Uninstall Complete screen appears when finished. Click on **Quit** to close the Uninstall screen.



4. **Restart the computer to complete the uninstall process. This will ensure that the computer functions properly after the uninstall process.**

Installing / Charging the Battery



Note: The battery is an option and is not included with the unit.

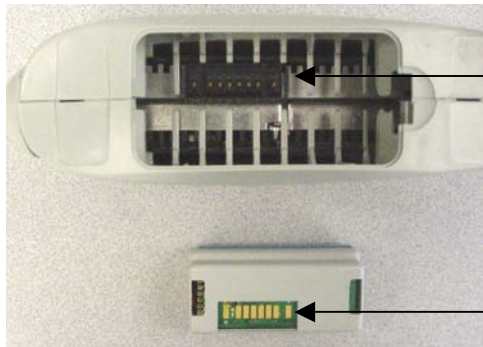
The battery is installed in the bottom of the Ripwave unit. To install and charge the battery, follow the steps below.

1. Using the battery pack tab, remove the battery cover from the Ripwave unit.



Battery pack tab

2. Install the battery pack into the Ripwave unit, ensuring that the contacts on the battery pack mate with the contacts in the Ripwave unit.



Battery contacts

Battery pack contacts



Beta

3. Reinstall the battery cover on the Ripwave unit.

To charge the battery, install it in the Ripwave unit. Connect the AC adapter (see Ripwave unit installation) to the Ripwave unit. The battery will begin charging immediately with the on/off switch in either position. The middle indicator light on the front of the Ripwave unit (under the antenna) will be constant yellow, indicating that the battery is being charged.



Notes:

The battery indicator light will only be on if the on/off switch is in the on position. When the battery is fully charged, the indicator light will go off and charging stops.

To view the battery indicator LED, rotate the antenna clockwise. See [page 2](#) for details.

Beta User Guide Frequently Asked Questions

1) What is the Ripwave unit?

Ripwave is a new and exciting product that allows end users to access the Internet at broadband speeds through a small wireless device that is self installed and is non-line-of-sight to the tower.

2) What does it cost?

As a beta user, there is no charge for using the service.

3) Are there conditions attached in beta-testing the Ripwave unit?

As a beta user, you agree to:

- a) Provide feedback on your experiences with this service & hardware. You will be notified regularly throughout the beta trial period to provide feedback.
- b) Return the Ripwave unit at the termination of the beta trial.

4) When can I purchase the Ripwave unit and how much will it and the service cost?

The exact pricing and time frame for commercial deployment has not been determined. When service is deployed in your area, you will be notified.

5) I have installed the Ripwave software and cannot connect to the Internet.

If you are having problems, contact your service provider.

6) Can I use the Ripwave unit outside of my home or in another part of the city?

As this is a beta trial, the service is only available in a limited coverage area.

Therefore, using the Ripwave unit outside of the coverage area may result in loss of coverage. The Ripwave unit can be used anywhere there is adequate signal strength – including outdoors – as long as there is power to the unit from the wall charger or battery (not included for all users). Your service provider will be able to tell you the coverage area for the beta trial.

7) How can I tell if there is adequate signal strength?

The top LED indicator on the Ripwave unit flashes green when you have strong/adequate signal strength in a given area (see [page 15](#) for all signal strength indicator colors). Moving the Ripwave unit around or rotating the Ripwave unit may help with improving signal strength. Use the Ripwave Monitor Signal Strength and the Signal Quality bar graphs to help obtain maximum signal strength and quality. Also ensure that the antenna is pointed straight up.

8) How can I obtain a battery for my CPE, and do I need one?

Only a select number of beta users will be given a battery for their Ripwave unit. The battery is optional and is not necessary to operate the Ripwave unit. The battery allows the unit to be operated without AC power.

Frequently Asked Questions (continued)

9) Do I need to turn off the Ripwave unit when I am finished using it?

It is recommended that you turn off the Ripwave unit when it is not in use. The switch is located on the front of the unit.

10) I have a friend/family member/co-worker who also wants to beta test the Ripwave unit. Can they sign up?

All Beta users have been identified for this specific trial. No additional Beta users are needed at this time.

11) Can I be candid on the beta test questionnaires without losing the product/service?

Absolutely! The only way that we can improve on the quality of the product and service is to know exactly what you think about it. Please feel free to offer any suggestions, recommendations, or comments on all questionnaires that you will complete during the trial.

End User License Agreement

---- NOTICE TO USER ----

END-USER LICENSE AGREEMENT FOR RIPWAVE SOFTWARE

BY USING THE RIPWAVE SOFTWARE (INCLUDING THE COMPUTER SOFTWARE, THE ASSOCIATED MEDIA, ANY PRINTED MATERIALS, THE RIPWAVE MODEM, AND ANY ELECTRONIC OR "ONLINE" DOCUMENTATION) YOU ACCEPT THE TERMS AND CONDITIONS OF THIS LICENSE AGREEMENT. IF YOU DO NOT AGREE WITH THE TERMS AND CONDITIONS HEREIN, DO NOT USE THE SOFTWARE, AND PROMPTLY RETURN THE ENTIRE PACKAGE TO YOUR AUTHORIZED SERVICE PROVIDER.

IN RETURN FOR OUR GRANTING TO YOU A LICENSE TO USE THE SOFTWARE, YOU AGREE TO THE FOLLOWING TERMS AND CONDITIONS:

IMPORTANT - READ CAREFULLY: This End-User License Agreement ("Agreement") is a legal agreement between you (either an individual or an entity) and Navini Networks, Inc. for the Ripwave Software ("SOFTWARE"). The SOFTWARE includes computer software, the associated media, any printed materials, and any electronic or "online" documentation. Any software provided along with the SOFTWARE that is associated with a separate end-user license agreement is licensed to you under the terms of that license agreement. By installing, copying, downloading, accessing, or otherwise using the SOFTWARE, you agree to be bound by the terms of this AGREEMENT. If you do not agree to the terms of this AGREEMENT, Navini is unwilling to license the SOFTWARE to you. In such event, you shall not use or copy the SOFTWARE, and you should promptly contact your Authorized Service Provider ("ASP") for instructions on return of the SOFTWARE and Ripwave Modem. EXCEPT FOR NON-DISCLOSURE AGREEMENTS BETWEEN THE PARTIES, THIS IS THE ENTIRE AGREEMENT BETWEEN THE PARTIES RELATING TO THIS SOFTWARE AND SUPERCEDES ANY PURCHASE ORDER, COMMUNICATION, ADVERTISING, OR REPRESENTATION CONCERNING THE SOFTWARE OR THE RIPWAVE SERVICE. NO CHANGE OR MODIFICATION OF THIS AGREEMENT WILL BE VALID UNLESS IT IS IN WRITING AND SIGNED BY NAVINI.

SOFTWARE LICENSE

The SOFTWARE is protected by copyright laws and international copyright treaties, as well as other intellectual property laws and treaties. The SOFTWARE is licensed, not sold. This Agreement does not authorize a sale or lease of the SOFTWARE. The term "COMPUTER" shall mean a single computer system.

Beta

1. GRANT OF LICENSE. This AGREEMENT grants to you a personal, non-exclusive, non-transferable license as follows:
 - 1.1 Storage, Installation and Use. Except as otherwise expressly provided in this AGREEMENT, you will be allowed to install, use, access, run, or otherwise interact with the SOFTWARE on multiple COMPUTERS. This SOFTWARE may only be used with a Ripwave Digital Modem ("MODEM").
2. DESCRIPTION OF OTHER RIGHTS AND LIMITATIONS.
 - 2.1 Multiple Processor Version Selection. The CD or diskette(s) on which the SOFTWARE resides may contain several copies of the SOFTWARE, each of which is compatible with different microprocessor architectures, such as the x86 architecture or various RISC architectures ("Processor Version(s)"). You may install and use only one copy of one Processor Version of the SOFTWARE on the COMPUTER.
 - 2.2 Limitations on Reverse Engineering, Decompiling, and Disassembly. YOU MAY NOT MODIFY, TRANSLATE, DISASSEMBLE, CREATE DERIVATIVE WORKS, OR REVERSE ENGINEER THE SOFTWARE OR ANY COPY, IN WHOLE OR IN PART.
 - 2.3 Rental. You may not rent, lease, assign, or lend the SOFTWARE or distribute copies of the SOFTWARE to others.
 - 2.4 Software Transfer. You may not sell the SOFTWARE. You may not post, distribute or transfer the SOFTWARE to anyone outside of the Beta User Trial.
 - 2.5 Termination. This license is effective until terminated. You may terminate this license by returning the SOFTWARE, the Ripwave modem and associated hardware and all documentation to your service provider. Without prejudice to any other rights, NAVINI may terminate your rights under this AGREEMENT if you fail to comply with the terms and conditions of this AGREEMENT. In such event, you must return the SOFTWARE and any copies, the Ripwave modem and associated hardware and all documentation to your service provider.
 - 2.6 Trademarks. This AGREEMENT does not grant you any rights in connection with any trademarks or service marks of NAVINI.
 - 2.7 Third Party Intellectual Property. Licensee acknowledges, understands and agrees that the licensed Software covered by this License Agreement may contain Intellectual Property owned by Third Parties and duly licensed to NAVINI NETWORKS, INC. Copyright, Patent and other laws protect Third Party Intellectual Property manufactured with, marketed with, or otherwise bundled with the licensed Software. Licensee promises to keep such Third Party Intellectual Property in confidence to the benefit of the Third Party, agrees not to reverse engineer or otherwise decompile Third Party Intellectual Property, and agrees to stop using, destroy and/or return such Third Party owned Intellectual Property under the same terms and conditions as the licensed Software as set forth in this License Agreement. The Third Party is a third party

beneficiary under this License Agreement and may independently enforce its Intellectual Property rights.

2.8 Remote Digital Access. Licensor reserves the right, but is not obligated to digitally access the CPE and/or the Ripwave Software for the purposes of upgrading and maintaining the software.

3. UPGRADES. If the SOFTWARE is labeled as an upgrade, you must be properly licensed to use a product identified by NAVINI as being eligible for the upgrade in order to use the SOFTWARE ("Eligible Software"). SOFTWARE labeled as an upgrade replaces and/or supplements (and may disable) the Eligible Software. You may use the resulting upgraded product only in accordance with the terms of this AGREEMENT.

4. COPYRIGHT. The SOFTWARE is provided with restrictive rights. All title and intellectual property rights in and to the SOFTWARE (including but not limited to any images, photographs, animations, video, audio, music, text, and "applets" incorporated into the SOFTWARE), the accompanying printed materials, and any copies of the SOFTWARE, are owned by NAVINI. All title and intellectual property rights in and to the content that is not contained in the SOFTWARE but may be accessed through use of the SOFTWARE and the MODEM is the product of the respective content owner and may be protected by applicable copyright or other intellectual property laws and treaties. This AGREEMENT grants you no rights to use such content. Use of any online services that may be accessed through the SOFTWARE may be governed by the respective terms of use for such services. If this SOFTWARE contains documentation that is provided only in electronic form, you may print one copy of such electronic documentation. You may not copy the printed materials accompanying the SOFTWARE. All rights not specifically granted under this AGREEMENT are reserved by NAVINI.

5. PRODUCT SUPPORT. Product support for the SOFTWARE is not provided by NAVINI. For product support, please refer to ASP's support number provided in their documentation.

6. U.S. GOVERNMENT RESTRICTED RIGHTS. ALL SOFTWARE provided to the U.S. Government pursuant to solicitations issued on or after December 1, 1995 is provided with the commercial license rights and restrictions described elsewhere herein. ALL SOFTWARE provided to the U.S. Government pursuant to solicitations issued prior to December 1, 1995 is provided with "Restricted Rights" as provided for in FAR, 48 CFR 52.227-14 (June 1987) or DFAR, 48 CFR 252.227-7013 (Oct 1988), as applicable.

7. EXPORT RESTRICTIONS. The SOFTWARE is intended for distribution only in the United States. You agree that you will not directly or indirectly export or re-export the SOFTWARE (or portions thereof) to any country. You specifically agree not to export or re-export the SOFTWARE (i) to any country to which the U.S. has embargoed or restricted the export of goods or services, which currently include, but are not necessarily limited to, Cuba, Iran, Iraq, Libya, North Korea, Sudan, and Syria, or to any national of any such country, wherever located, who intends to transmit or transport the SOFTWARE back to such country; (ii) to any person or entity whom you know or have reason to know will utilize the SOFTWARE in the design, development, or production of

Beta

nuclear, chemical, or biological weapons; or (iii) to any person or entity who has been prohibited from participating in U.S. export transactions by any federal agency of the U.S. government.

8. WARRANTY. THE SOFTWARE IS PROVIDED ON AN "AS IS" BASIS WITHOUT WARRANTIES OF ANY KIND, EXPRESS OR IMPLIED, INCLUDING WITHOUT LIMITATION ANY WARRANTIES OF MERCHANTABILITY, FITNESS FOR A PARTICULAR PURPOSE, TITLE, NON-INFRINGEMENT, AND ANY WARRANTY AGAINST LATENT DEFECTS. NAVINI DOES NOT WARRANT THAT THE OPERATION OF THE SOFTWARE WILL BE UNINTERRUPTED OR ERROR FREE. YOU ARE SOLELY RESPONSIBLE FOR DETERMINING WHICH SOFTWARE BEST SUITS YOUR NEEDS, FOR INSTALLING THE SOFTWARE, AND FOR RESULTS OBTAINED. YOU HAVE THE SOLE RESPONSIBILITY FOR INSPECTING AND TESTING THE SOFTWARE TO YOUR SATISFACTION BEFORE USING THEM WITH IMPORTANT DATA OR WITH YOUR COMPUTER. NAVINI MAKES NO WARRANTIES OR REPRESENTATIONS WHATSOEVER REGARDING ANY GOODS OR SERVICES PROVIDED BY ANY THIRD PARTIES PURSUANT TO YOUR USE OF THE SOFTWARE AND NAVINI SHALL NOT BE LIABLE FOR ANY COSTS OR DAMAGES ARISING OUT OF, EITHER DIRECTLY OR INDIRECTLY, THE ACTIONS OR INACTIONS OF SUCH THIRD PARTY. IN NO EVENT SHALL NAVINI NETWORKS, INC. OR ANY THIRD PARTY INVOLVED IN THE CREATION, PRODUCTION, DELIVERY, OR LICENSING OF THE SOFTWARE BE LIABLE TO YOU OR ANY THIRD PARTY FOR ANY DIRECT, INDIRECT, SPECIAL, GENERAL, PUNITIVE, EXEMPLARY, AGGRAVATED, INCIDENTAL, OR CONSEQUENTIAL DAMAGES, EVEN IF ADVISED OF THE POSSIBILITY THEREOF, WHETHER FORESEEABLE OR UNFORESEEABLE, OF ANY KIND WHATSOEVER, INCLUDING BUT NOT LIMITED TO LOSS OF PROFITS; UNANTICIPATED BENEFITS OR REVENUE; ANTICIPATED PROFITS; DAMAGES OR COSTS INCURRED AS A RESULT OF: (i) LOST TIME, DATA, OR USE OF THE SOFTWARE; (ii) HARDWARE FAILURES FOR ANY REASON; (iii) INCOMPATIBILITY WITH HARDWARE OR OTHER SOFTWARE; (iv) LOSS OR CLAIMS FROM THIRD PARTIES; OR (v) FROM ANY OTHER CAUSE ARISING OUT OF USE OF OR INABILITY TO USE THE SOFTWARE, OR CONTRIBUTION OR INDEMNITY IN RESPECT OF ANY CLAIM RELATED TO THE SOFTWARE. IN ANY EVENT, NAVINI'S LIABILITY SHALL NOT EXCEED THE ACTUAL PRICE PAID FOR THE LICENSE TO USE THE SOFTWARE.

SOME JURISDICTIONS DO NOT ALLOW THE EXCLUSION OR LIMITATION OF INCIDENTAL OR CONSEQUENTIAL DAMAGES, OR ALLOW LIMITATIONS ON HOW LONG A WARRANTY LASTS, SO THE ABOVE LIMITATIONS OR EXCLUSIONS MAY NOT APPLY TO YOU. THIS WARRANTY GIVES YOU SPECIFIC LEGAL RIGHTS, AND YOU MAY ALSO HAVE OTHER RIGHTS, WHICH VARY FROM JURISDICTION TO JURISDICTION.

9. LAW. This Agreement and each Order shall be construed in accordance with the laws (including the Uniform Commercial Code) of the State of Texas, without giving effect to principles of conflicts of laws. Any legal action arising here from will be brought within the state or federal courts located in Dallas county, Texas, which is agreed by the parties to be a convenient forum. The SOFTWARE User acknowledges, understands and agrees that this Agreement is written in the English Language, and the SOFTWARE User expressly waives all “native language” requirements, whether based in local statutory, regulatory or other law.

END OF AGREEMENT

Copyright © 2001, 2002 Navini Networks, Inc.

All rights reserved. Printed in the USA.

Navini Networks, Internet at the Speed of Thought, and Ripwave are registered trademarks of Navini Networks, Inc. Other product and company names mentioned herein may be trademarks and/or service marks of their respective owners. Rev. 020402

Beta