

# **ViperBase™ UsersManual**

**Beta 0.1**  
**November 1999**

---

---

# ViperBase Users Manual

## *Beta Release 0.1*

© Copyright 1999 JetCell Incorporated. All rights reserved.

### JetCell Confidential

The information contained in this document is the property of JetCell, Inc. Except as specifically authorized in writing by JetCell, the holder of this document shall keep the information contained herein confidential and protect it from disclosure and dissemination to third parties in whole or in part and use same for evaluation purposes only. Certain inventions described herein may be the subject of pending U.S. and international patent applications.

This document, whether published or unpublished, is protected as a copyrighted work and may not be copied, adapted, displayed or modified without written consent of JetCell, Inc. Report infringements to [infringement@jetcell.com](mailto:infringement@jetcell.com).

The contents of this document are provided for information purposes only and are subject to modification by JetCell, Inc. without notice. No representation or warranty is made as to the completeness or accuracy of the information contained herein, including but not limited to information concerning the suitability or performance of the product or application, merchantability or fitness for any particular purpose.

The following are trademarks of JetCell, Inc.: GoIP, RAP, SmartCell, SureTrack, V7M, V7X, ViperBase, ViperCell, ViperWatch.

## **Table of Contents**

Installing and Configuring ViperBase .....	1-1
Running ViperBase .....	1-1
Navigating ViperBase .....	1-2
Using ViperBase Configuration Management .....	1-2
The General Dialog Box .....	1-3
The Gateway List Dialog Box .....	1-4
ViperBase Subscriber Management .....	1-4
The IP Phone List Dialog Box.....	1-5
The Mobile List Dialog Box .....	1-6
The Subscriber Detail Information Dialog Box .....	1-7
Sending a Text Message with SMS-CB .....	1-7
Schedule a New Message .....	1-8
Delete a Scheduled Message .....	1-9
Query Scheduled Messages .....	1-9
Change a Schedule Message .....	1-9
Sending Feedback to JetCell, Inc. ....	1-9



## 1 - ViperBase Operation

### Installing and Configuring ViperBase

ViperBase performs the H.323 Gatekeeper required by the ViperCell network. ViperBase:

- Runs on a Windows NT server
- Is configured and managed from the HTML-based ViperWatch OA&M system.
- Is compatible with Microsoft Internet Explorer 4.0 or later and Netscape Navigator 4.0 or later

### Running ViperBase

In the IP Address area of the web browser, type the IP address of the active ViperBase. After a short delay, the **Registered ViperCells** dialog box opens.

ViperCell Name	Cell ID	ViperCell IP Address	# of Active Mobiles
ViperCell10.1.2.109	9	<a href="#">10.1.2.109</a>	1
ViperCell10.1.2.110	10	<a href="#">10.1.2.110</a>	0
ViperCell10.1.2.113	13	<a href="#">10.1.2.113</a>	3

The Registered Viper Cells dialog box is divided into four fields:

- The **ViperCell Name** field identifies the active ViperCell
- The **Cell ID** identifies the identifying number assigned to the ViperCell
- Click on a ViperCell IP address to be transferred to the **System Information** dialog box of the ViperCell

- The **Number of Active Mobiles** shows how many MS's are active at the time the dialog box is accessed.

At the bottom of the dialog box, click **Recall** to update the Registered ViperCells dialog box.

## Navigating ViperBase

The ViperBase display is divided into three frames.

- The top frame contains information about the ViperBase being viewed
- The frame at the left side of the display contains the topic headings of the different ViperBase dialog boxes
- The central and largest frame is the specific ViperBase dialog box.

In the left frame, click on a topic heading to open the topic in the main window.

## Using ViperBase Configuration Management

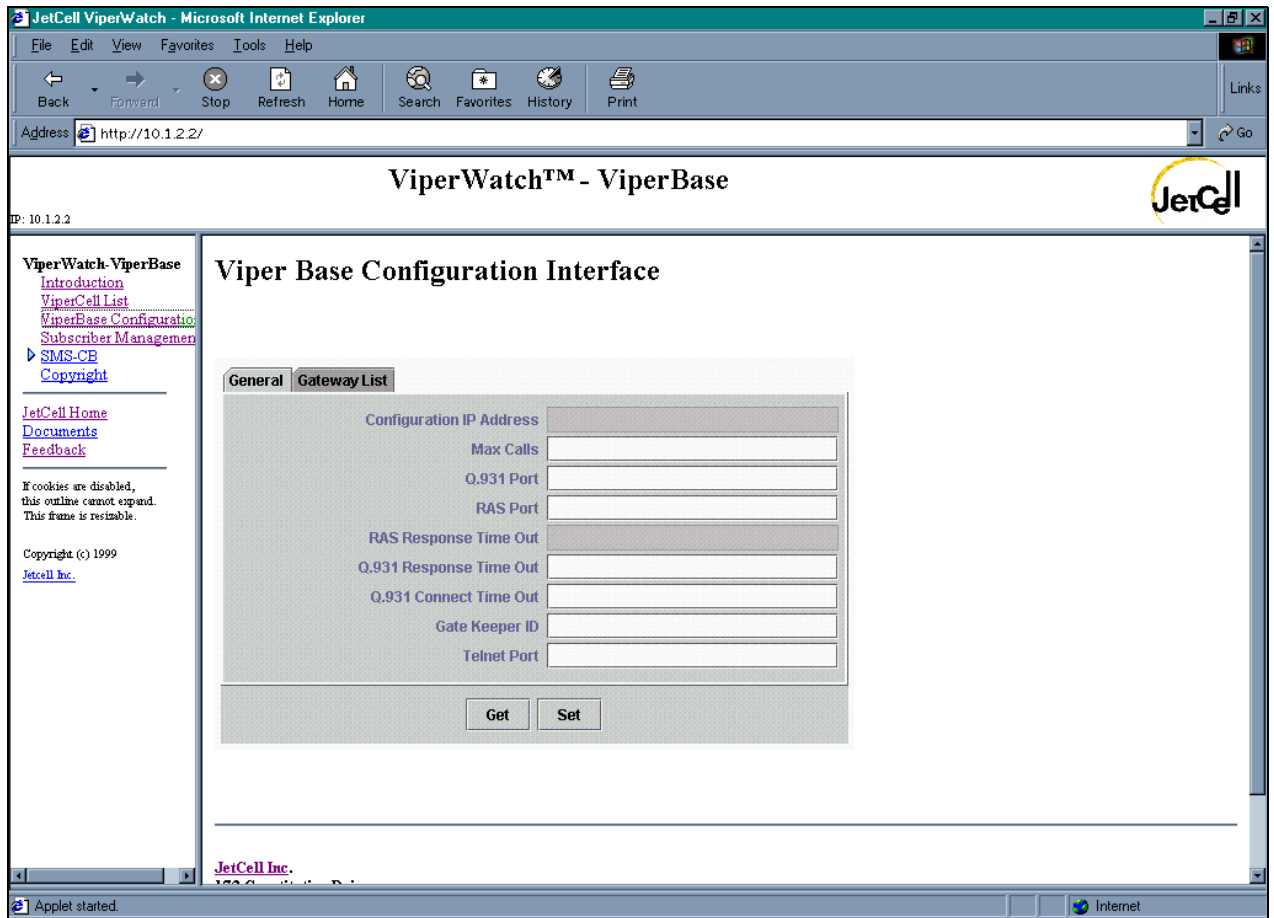
ViperBase Configuration Management uses interactive Java.

In the left frame, click on **Configuration Management** to load the Java Applet. After a pause of up to 30 seconds while the applet loads, the **General** dialog box appears. Configuration Management consists of primary dialog boxes:

- The General dialog box provides information about ViperBase network connectivity
- The Gateway List dialog box displays a list of all active H.323 Gateways that are part of the ViperCell network

## The General Dialog Box

In the left frame, click on the ViperBase Configuration Management topic heading to open the **General** dialog box.

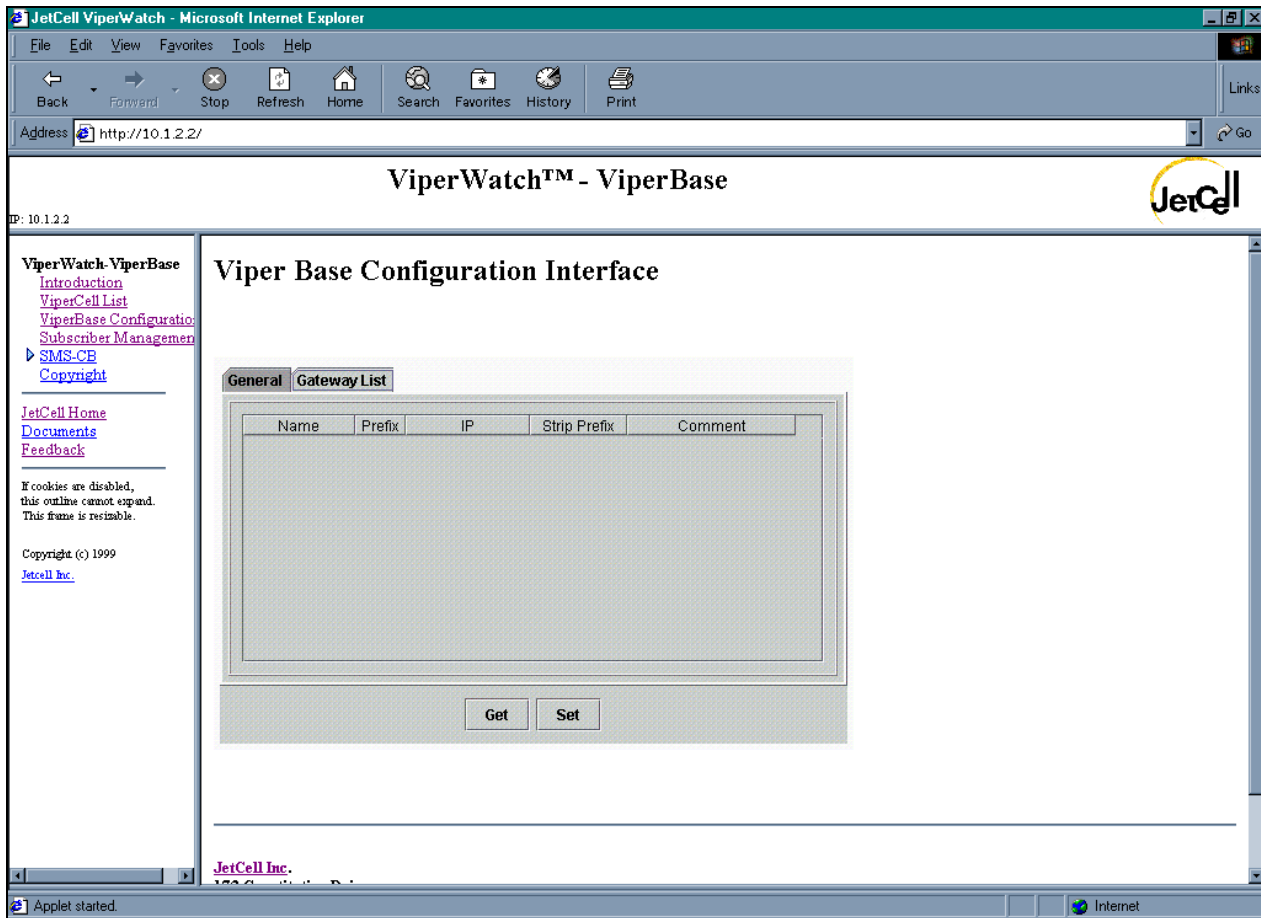


The General dialog box contains configuration information for the ViperBase.

- Click Get to refresh the displayed information.
- Click Set to write from the General dialog box to the ViperBase.

### The Gateway List Dialog Box

The Gateway List dialog box shows all H.323 Gateways active in the ViperCell network.



- Click Get to refresh the display
- Click Set to transfer changes from the Gateway List dialog box to the ViperBase

## ViperBase Subscriber Management

In the left frame, click on **Subscriber Management** to add, modify, and remove ViperCell subscriber information. ViperBase Subscriber Management consists of three dialog boxes:

- The **IP Phone List** dialog box
- The **Mobile List** dialog box
- The **Subscriber Detail Information** dialog box

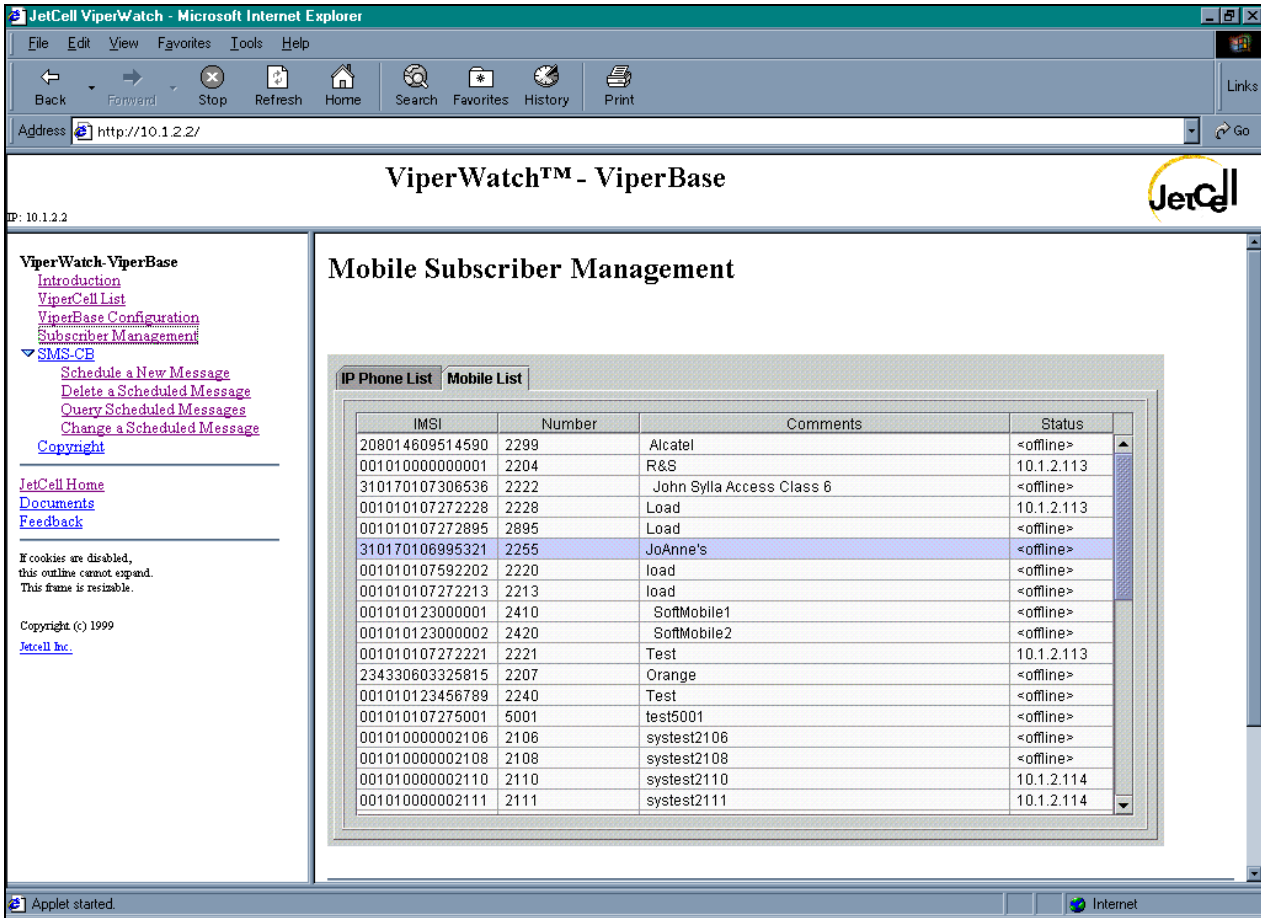
Each of these dialog boxes is described in the following sections.





## The Mobile List Dialog Box

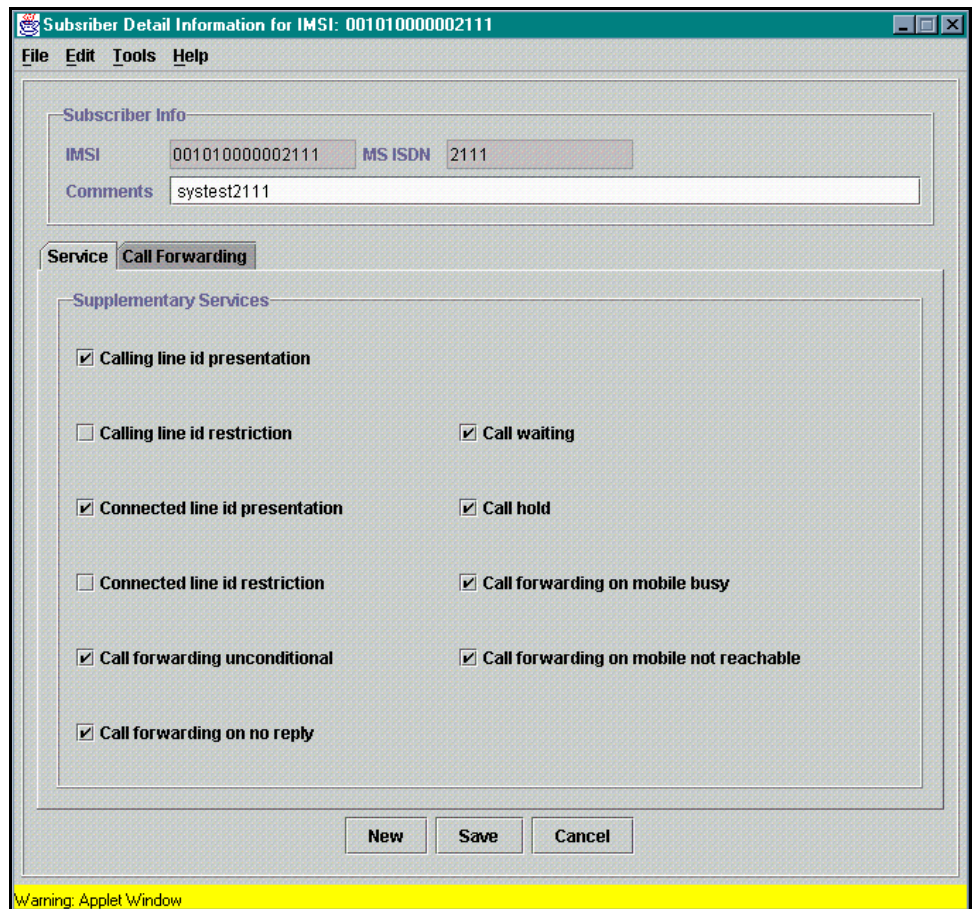
Use the **Mobile List** dialog box to display a summary of users that are installed in the ViperCell's Local Users Database (LUDB).



Double-click on a list item to display details about that Mobile Station (MS).

### The Subscriber Detail Information Dialog Box

The **Subscriber Detail** Information dialog box to configure a specific Mobile Station (MS).



- Click **New** to display an empty Subscriber Detail dialog box. The MS settings in a new Detail dialog box are reset to their default values.
- Click **Save** to transfer updated subscriber information from the Detail dialog box to the ViperBase.
- Click **Cancel** to close the Detail dialog box and return to the Mobile List dialog box.

### Sending a Text Message with SMS-CB

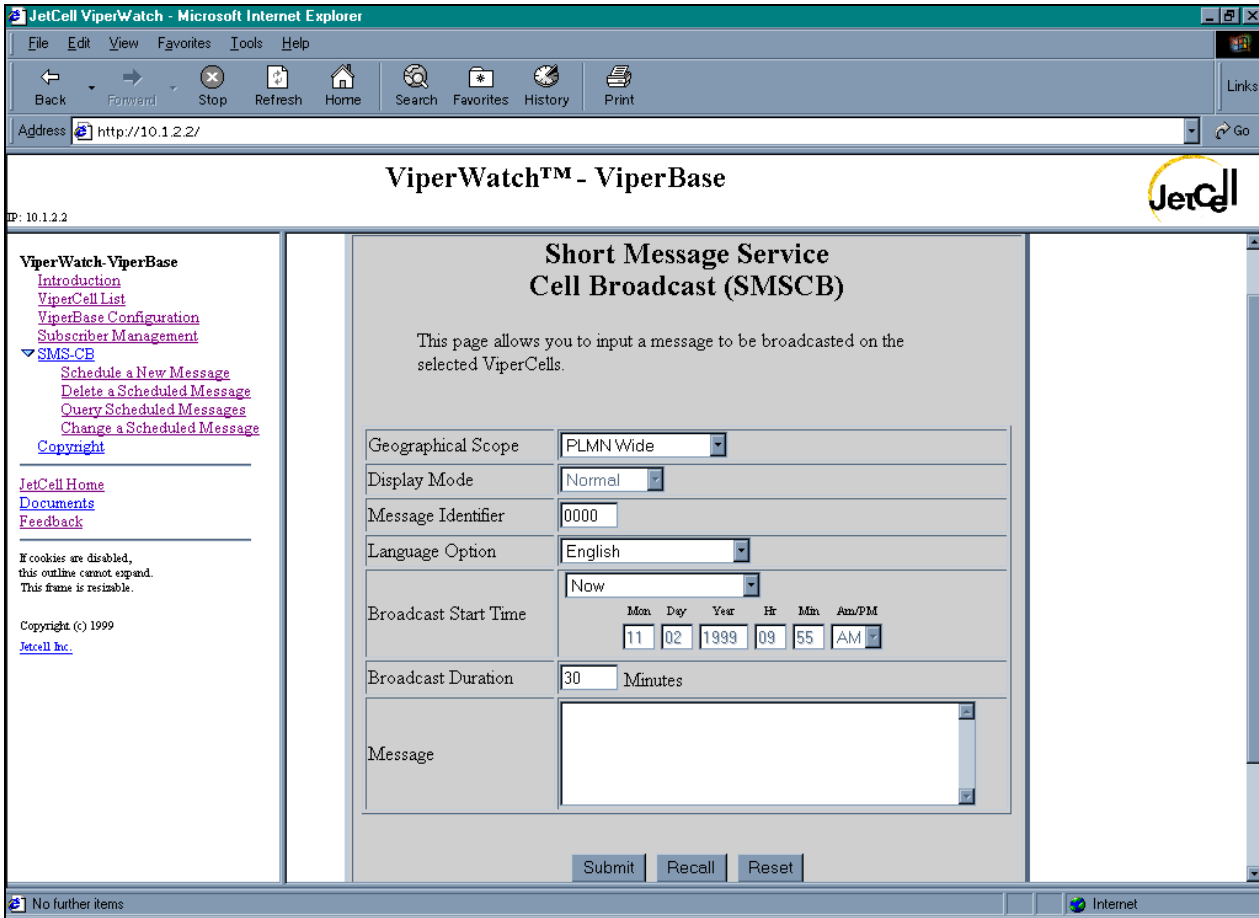
In the left frame, click on **SMS-CB** to open the Short Message Service Cell Broadcast (SMS-CB) dialog box. In the left frame, click on the triangular button next to SMS-CB to open the four SMS-CB topic headings:

- Schedule a New Message
- Delete a Scheduled Message (Not available)
- Query Scheduled Messages (Not available)
- Change a Schedule Message (Not available)

Each of these are described in the following sections.

## Schedule a New Message

In the left frame, click on Schedule a New Message. The new message dialog box opens.



The new SMS-CB Message dialog box includes the following parameters:

- **Geographical Scope** of the message:
  - PLMN Wide
  - Location Area wide
  - Cell Wide
- **Display Mode:**
  - This option is not yet implemented.
- A 4-digit **Message Identifier**
- **Language Option** for the message.
- **Broadcast Start Time** of the message
- **Broadcast Duration**
- The **Message** to be sent

Click Send to transfer the message to the ViperBase. The ViperBase sends the message to all MS's in the chosen geographical scope.

## **Delete a Scheduled Message**

This feature is not yet implemented.

## **Query Scheduled Messages**

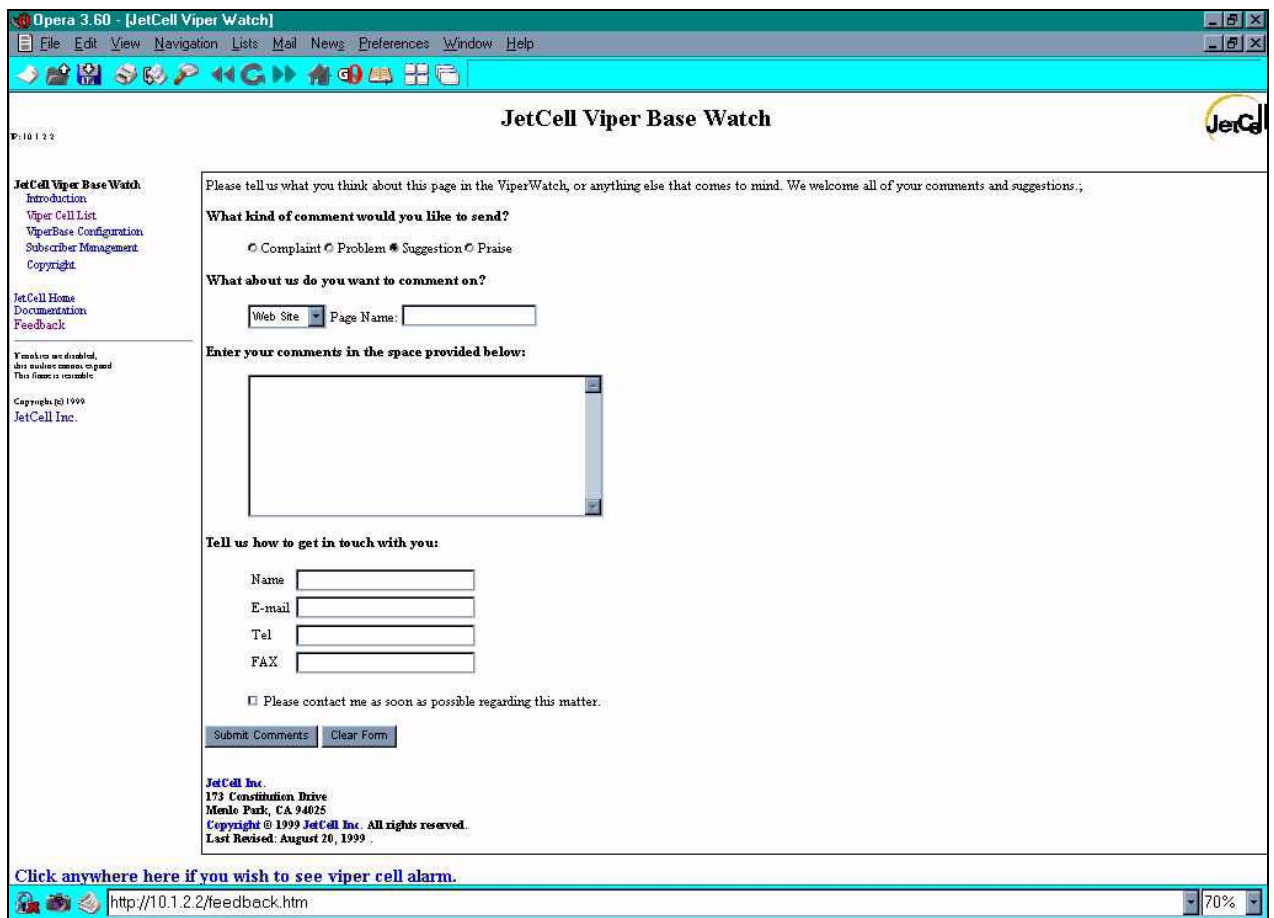
This feature is not yet implemented.

## **Change a Schedule Message**

This feature is not yet implemented.

## **Sending Feedback to JetCell, Inc.**

In the left frame, click Feedback to open the Feedback dialog box.



Use the Feedback form to report problems or request enhancements from JetCell, Inc.

- Click **Submit Comments** to transfer the form to JetCell, Inc.
- Click **Clear Form** to reset the feedback dialog box to the default state

