

UEE006 Module User Manual

The purpose of this manual is to explain correct way how to integrate module UEE006 to the end product. It includes procedures that shall assist you to avoid unforeseen problems. This manual presents information that shows how module and OEM product, where module integrated, complies with regulations in certain regions. Note that any modifications, not expressly approved by the manufacturer could void the authority to operate in these regions.

Integration

The RF module, model UEE006 has to be installed and used in accordance with the technical installation instructions provided by the manufacturer.

As figure 1, make sure antenna points the tags, and figure 2, “Mini-USB connector” provides communications signals, and DC Voltage.

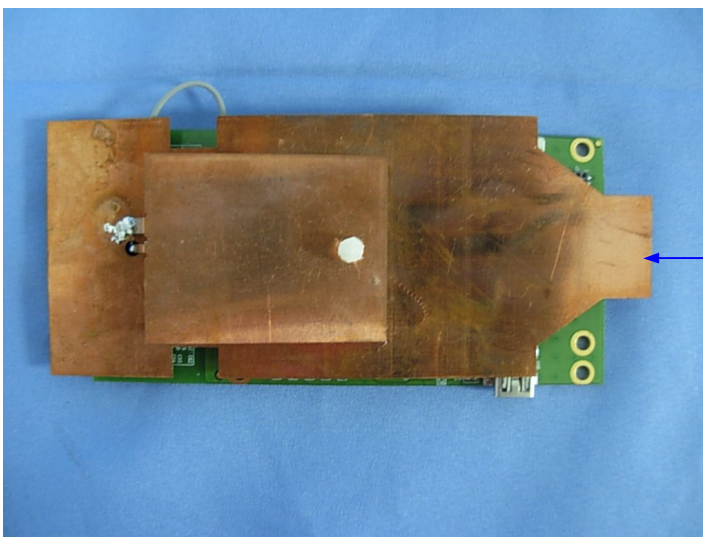


Figure 1

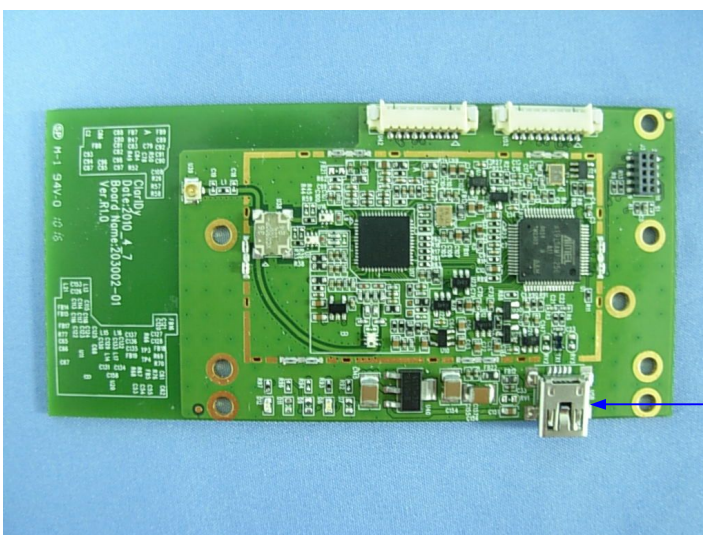


Figure 2

ClarIDy UEE006 Module User Manual

For detail information concerning type approval of this module please contact the authorized local distributor or the manufacturer (Please refer contact us).

The system may only be implemented in the configuration that was authorized.

USA-Federal Communications Commission (FCC)

This device complies with Part 15 of the FCC Rules.

Operation is subject to the following two conditions:

- (1) This device may not cause harmful interference, and
- (2) This device must accept any interference receive, including interference that may cause undesired operation.

Labeling

The RF module UEE006 for controller labeled as below.

UHF USB Reader Module Model No.: UEE006
FCC ID : WQH-UEE006
This device complies with Part 15 of the FCC Rules. Operation is subject to the following two conditions: (1) this device may not cause harmful interference and (2) this device must accept any interference received, including interference that may cause undesired operation. S/N: Made in Taiwan

The label that is placed on the module is too small to hold the required FCC information, then that information appear in the user manual for this device. In addition, the “**Contains FCC ID: WQH-UEE006**” label also must be placed on the outside of the end product system.

Contact US

ClarIDy Solutions, Inc.

Tel: +886-3- 567-0336

Fax: +886-3- 578-4255

E-mail:mkt@claridy.com

add: 7F, No. 9, Park Avenue II, Hsinchu Science Park, Taiwan 30075, R.O.C.

www.claridy.com