

# Clemas & Co Ltd

Industrial Cleaning Equipment  
Sales - Hire - Service

## MOTOR SCRUBBER PARTS MANUAL



**Clemas & Co.** Unit 5 Ashchurch Business Centre, Alexandra Way, Tewkesbury,  
Gloucestershire, GL20 8NB.

**Tel:** 01684 850777

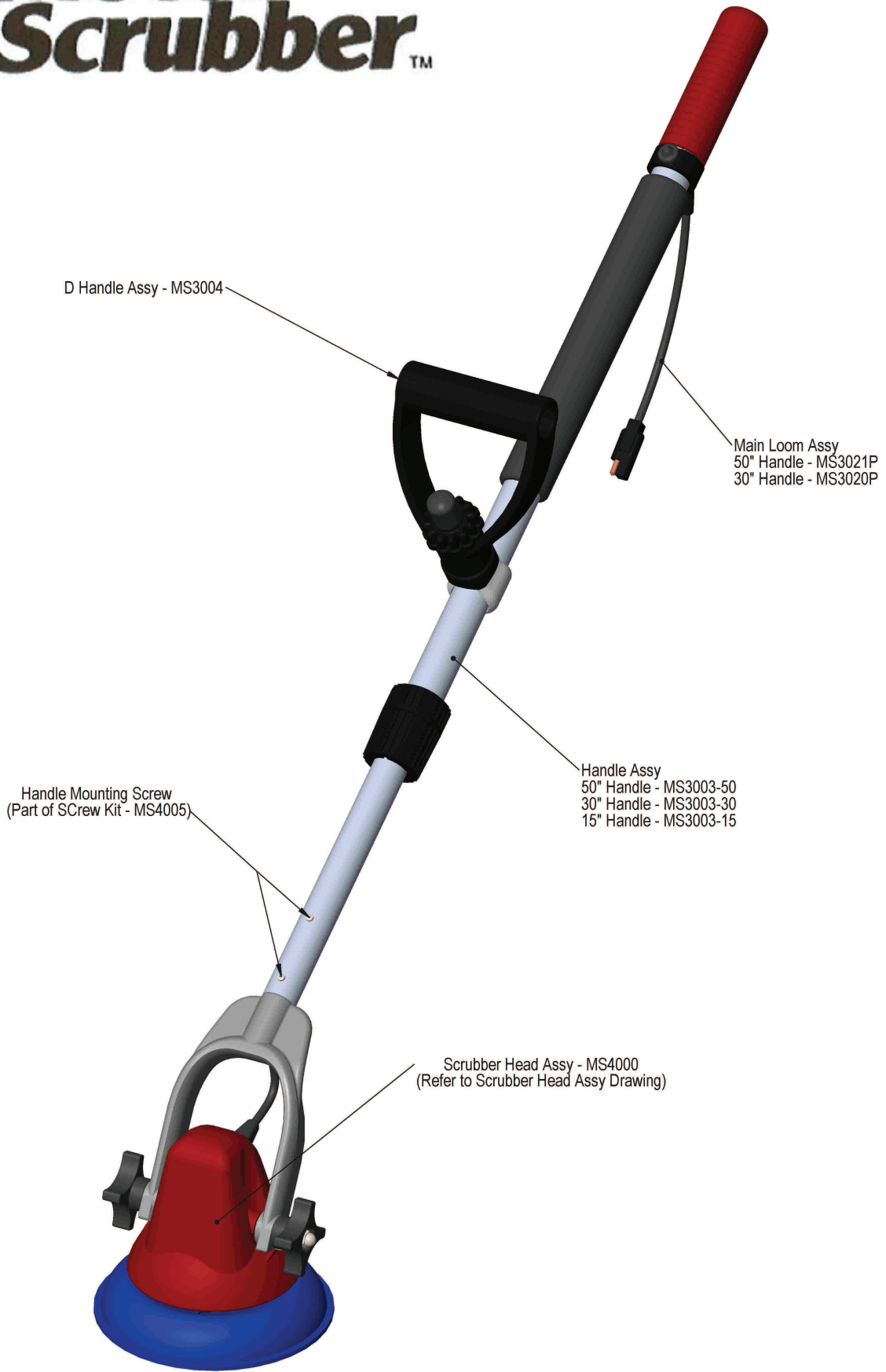
**Fax:** 01684 850707

**Email:** [info@clemas.co.uk](mailto:info@clemas.co.uk)

**Web:** [www.clemas.co.uk](http://www.clemas.co.uk)



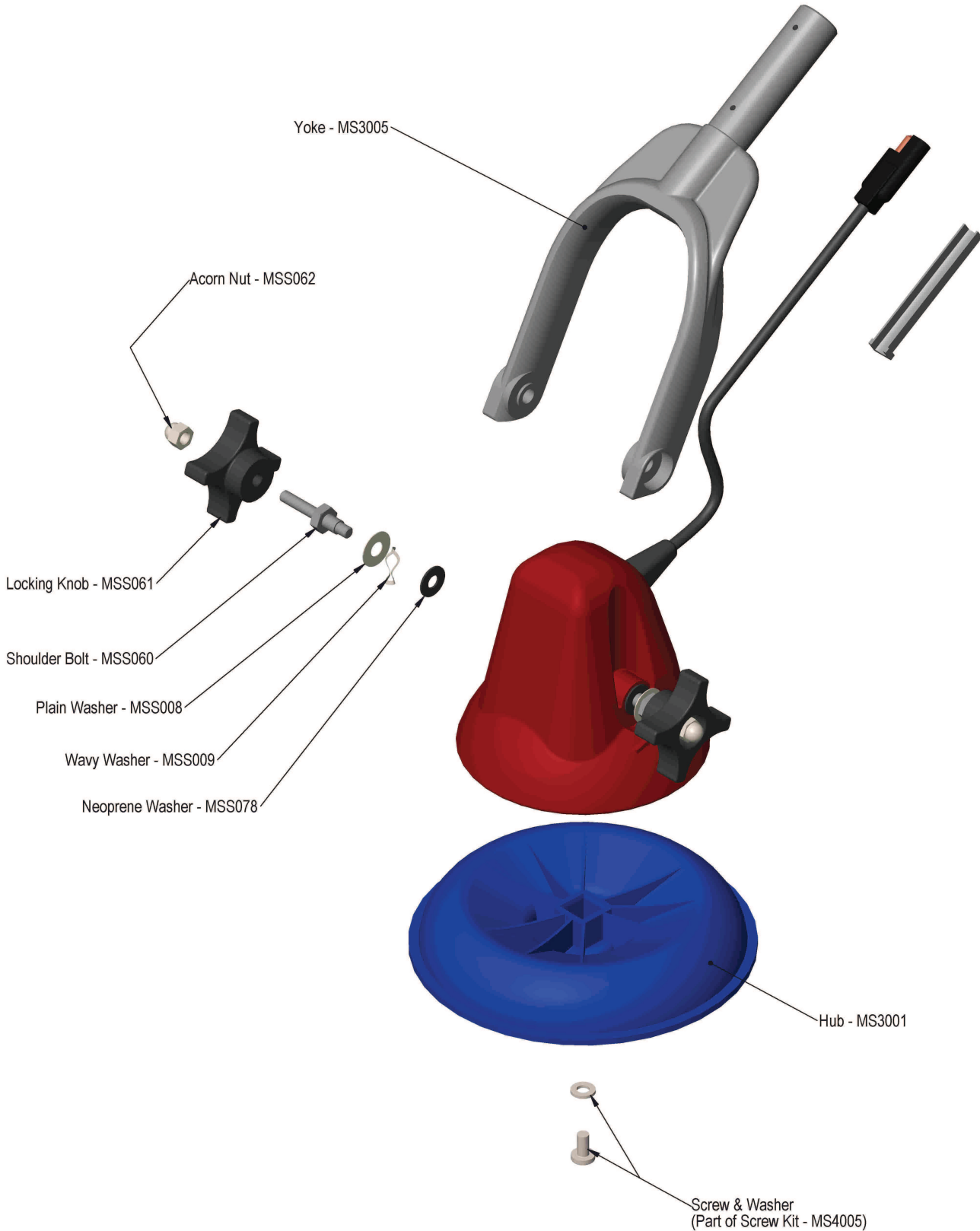
# Motor Scrubber™



DRAWN BY	R. Morris	APPROVED	TK	DATE	Jun 2013
SCALE:		UNITS:	mm	TOL:	
TITLE: <b>Motor Scrubber Assembly</b>					

THIS DRAWING IS THE PROPERTY OF T.I. KALLIS LIAISON AND MUST NOT BE COPIED WITHOUT ITS WRITTEN PERMISSION.

# Motor Scrubber™



DRAWN BY	R. Morris	APPROVED	TK	DATE	Jun 2013
SCALE:		UNITS:	mm	TOL:	
TITLE: <b>Scrubber Head Assembly</b>					

THIS DRAWING IS THE PROPERTY OF T.L. KALLIS, L.P. AND MUST NOT BE COPIED WITHOUT ITS WRITTEN PERMISSION.

# Motor Scrubber™

D Handle Screw Cover - MSS092

D Handle Assy - MS3004



Note:  
Supplied as a complete unit.  
Shown only for assembly purposes.

DRAWN BY	R. Morris	APPROVED	TK	DATE	Jun 2013
SCALE:		UNITS:	mm	TOL:	
TITLE: <b>D Handle Assembly</b>					
<small>THIS DRAWING IS THE PROPERTY OF T.L. KALLIS, L.P. AND MUST NOT BE COPIED WITHOUT ITS WRITTEN PERMISSION.</small>					



D Handle Assy - MS3004

Handle Grip - Black : MSS100  
Red : MSPT007

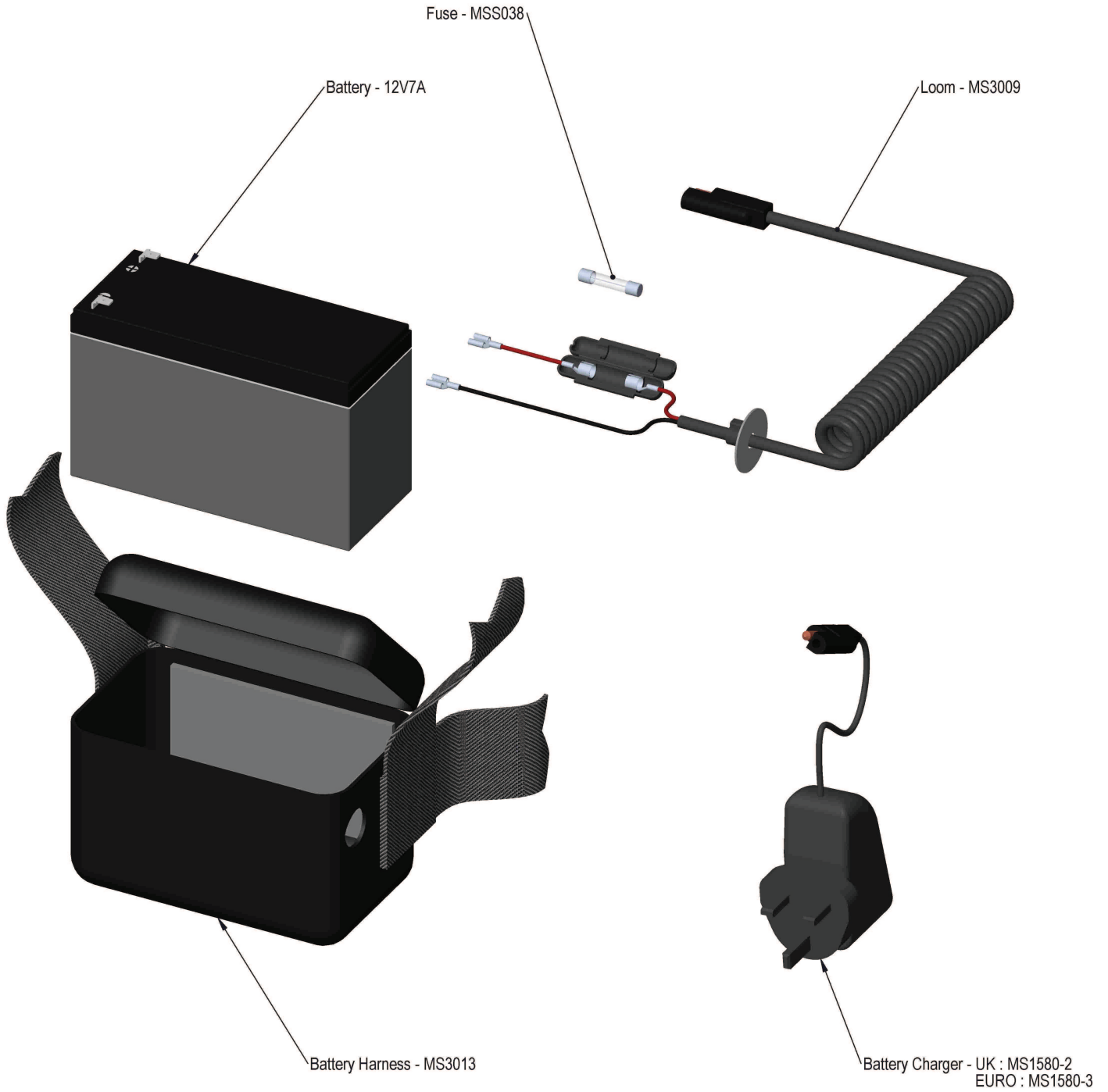
Plug End - MSPT014

Main Loom Assy  
50" Handle - MS3021P  
30" Handle - MS3020P

Handle Assy  
50" Handle - MS3003-50  
30" Handle - MS3003-30  
15" Handle - MS3003-15

DRAWN BY	R. Morris	APPROVED	TK	DATE	Jun 2013
SCALE		UNITS	mm	TOL.	
TITLE: <b>Handle Assembly</b>					

# Motor Scrubber™



DRAWN BY	R. Morris	APPROVED	TK	DATE	Jun 2013
SCALE:		UNITS:	mm	TOL:	
TITLE: <b>Power Assembly</b>					

THIS DRAWING IS THE PROPERTY OF T.I. KALLIS Ltd AND MUST NOT BE COPIED WITHOUT ITS WRITTEN PERMISSION.

# Motor Scrubber™



DRAWN BY	R. Morris	APPROVED	TK	DATE	Jun 2013
SCALE:		UNITS:	mm	TOL:	
TITLE:					
<b>Main Loom Assembly</b>					

THIS DRAWING IS THE PROPERTY OF T.L. KALLIS LHM AND MUST NOT BE COPIED WITHOUT THE WRITTEN PERMISSION.