

Geo Pendant (GPT-1-FD)

A. Identifying the Parts

1. Active/Pendant Button

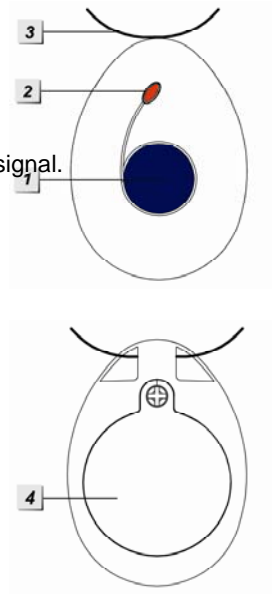
- Press the Active Button to send an activation signal.
- Press and hold the Active button for 8 seconds to send a cancel signal.

2. Red LED

- LED OFF: In Standby Mode
- RED LED ON: Transmitting signal
- RED LED FLASH: Transmitting signal under low battery
- RED FLASH 3 times: Low Battery Power on

3. Lanyard Loop

4. Battery Compartment Cover



B. Battery

The Geo Pendant uses one 3V CR2477 lithium battery as its power source. When low battery voltage is detected, a Low Battery signal will be transmitted. When the active button is pressed under low battery status, the Red LED will flash to remind the user to replace the battery.

C. Supervision

- After the battery is inserted, the Geo Pendant automatically will transmit 3 supervision signals every minute.
- If the supervision signal could not be received by the Locator (LT-49) for 5 minutes, the Locator will transmit an Exit signal to indicate the Geo Pendant has left its signal range. If the supervision signal is received again by the Locator, it will transmit an Entry signal to indicate the Geo Pendant has returned to its signal range.

D. Specification

- Frequency: 433.82MHz (FM)
- Power: CR2477 lithium 3V battery

FCC Statement

This device complies with Part 15 of the FCC Rules. Operation is subject to the following two conditions:

(1) This device may not cause harmful interference, and

(2) This device must accept any interference received, including interference that may cause undesired operation.

FCC Caution:

To assure continued compliance, any changes or modifications not expressly approved by the party responsible for compliance may void the user's authority to operate this equipment. (Example - use only shielded interface cables when connecting to computer or peripheral devices).