

Portable Wireless WIFI Equipment

AF-1108

Product Pictures:



RJ45 Port for WAN/LAN Cable



Main Features:

- Can connect via iPhone
- Can connect via Cable/DHCP/ADSL Modem
- Can connect via WIFI Hotspot
- Battery: Built-in 1800mAh rechargeable Li-polymer battery, last up to 4 hours of normal usage.
- Power Bank: Supplier power to mobile phone via USB.
- Automatically recognize ADSL/DHCP and WAN/LAN without any preset profile.
- Complies with IEEE802.11b/g/n Standards and data speed rate up to 150Mbps
- iPhone tethering: connects iPhone and shares internet connectivity, support wifi access.
- Plug and play, no need install any software
- Wifi support up to Max User amount is 20 users
- Dimensions: 95x 35x 14 mm
- Weight: 124g

Item	Description
WLAN	IEEE802.11b/g/n Speed up to 150Mbit/s
Interface	One power switch button
	One reset button
	One mini USB port for Power
	One RJ45 Connector
Indicator	One power status LED

Power Supply	Li battery (3.7V, 1800mA/h)	
Dimension	95x 35x 14mm	
Weight	About 124g	
Temperature	Work Temperature	-10℃ ~ +55℃
	Storage Temperature	-20℃ ~ +70℃
Humidity	5%~95%	

2. Software Specification

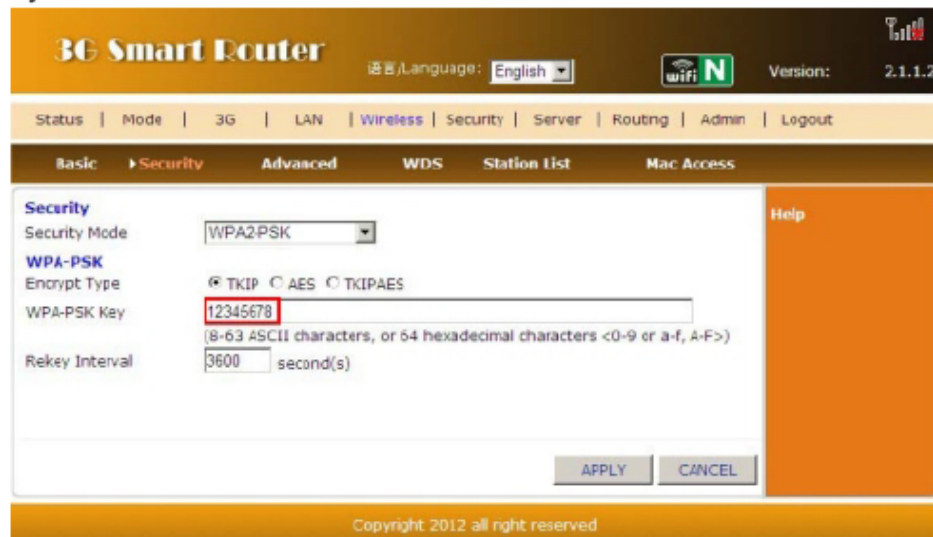
Item	Description
WLAN AP	1) Support IEEE 802.11b/g/n Standard 2) Support individual and mixed 802.11b/g/n mode 3) Support 1-11 channels;
WLAN Security	1) Support SSID Configure 2) Support SSID hiding 3) Support WEP/WPA/WPA2 Security 4) Support WAPI
Firewall	1) Support DMZ 2) Support MAC/IP/Port Filtering 3) Support NAT/NAPT 4) Support URL Filtering
System Management	1) Muti-Language management 2) Administrator's user name and password settings 3) Network time setting 4) Software upgrade 5) Reset to default settings 6) Router Restart 7) System Log 8) Help

Modification of the WIFI password

(1) Through WIFI, connect the Internet device wirelessly to MPR series, input 192.168.10.1 into the address bar of the device's browser and enter the management interface. Default user name: admin; Password: admin



(2). Modify the WIFI password in the interface of wireless setting-wireless safety.

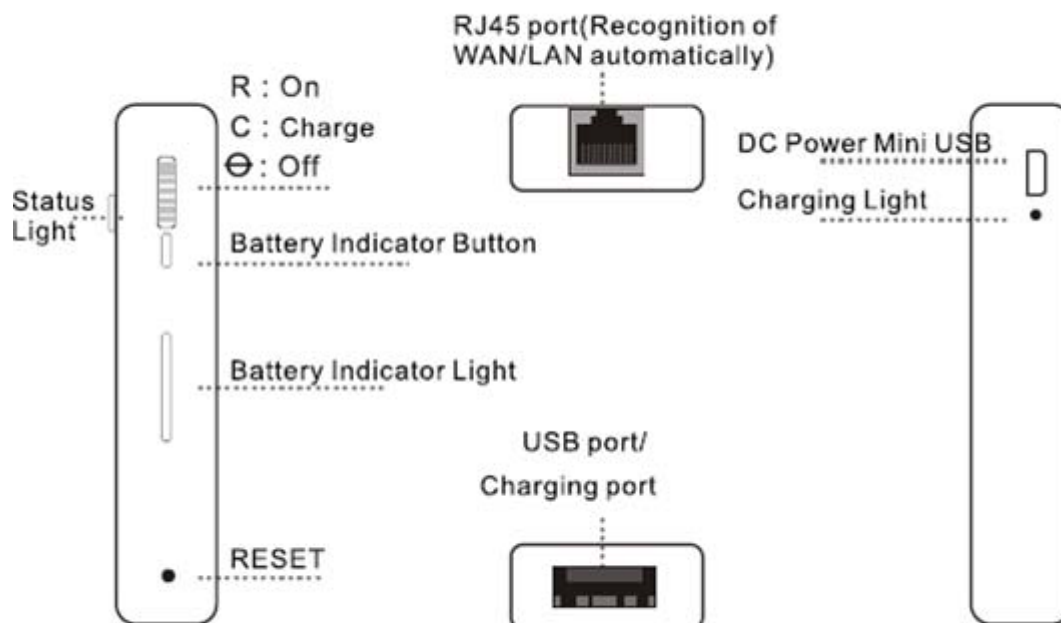


(3) When the status indicator displays "Blue light is on continuously", it shows that the dial is successful and the Internet can be visited.

Package Contents

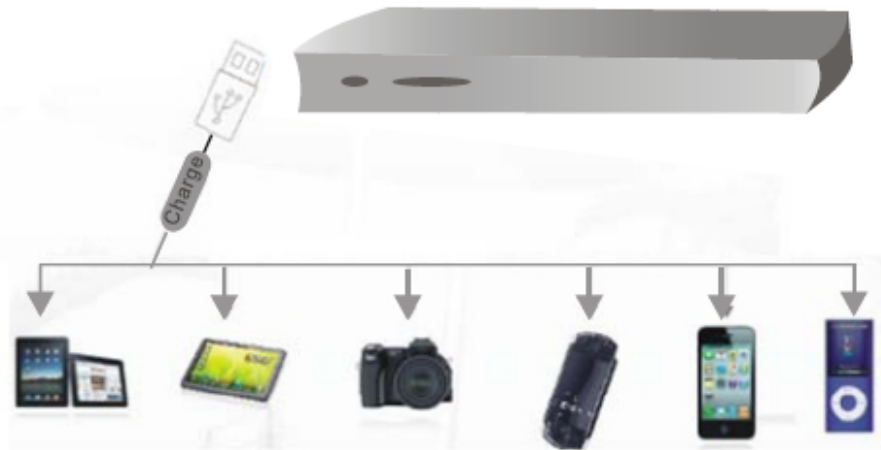
- 1x MPR series
- 1x Quick Installation Guide/Warranty Card
- 1x Micro USB Charging Cable

Overview



Charging Instruction (mobile Power)

- (1) Powering off for charging: Push the switch to gear C and connect the charger lead of the digital product to the USB port. Then it will charge the intelligent mobile phone of iPhone, iPad and Android.
- (2) Powering on for charging: Push the switch to gear R and connect the charger lead of the digital product to the USB port. Then it will charge the intelligent mobile phone of iPhone, iPad and Android.



Tariff inquiry method

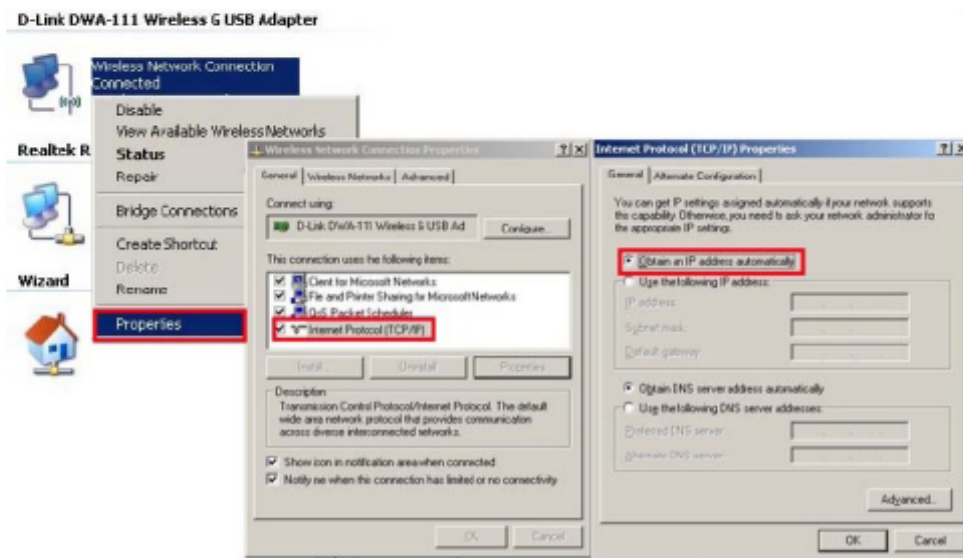
Means to see the battery electric quantity: no matter what condition MPR series is in, press the display button of electric quantity (beside the switch) and then observe the electric quantity according to the indication status of the electric quantity lights (if four lights are on, it shows that the battery is fully charged).


Means to see the battery with a full charge: charging is done under the condition of powering off, if the blue light is one, it indicates charging and if the blue light is off, it shows that the battery is fully charged.

Instruction to the connection of the wireless network

The computer is connected to the operating instructions of MPR series (XP)

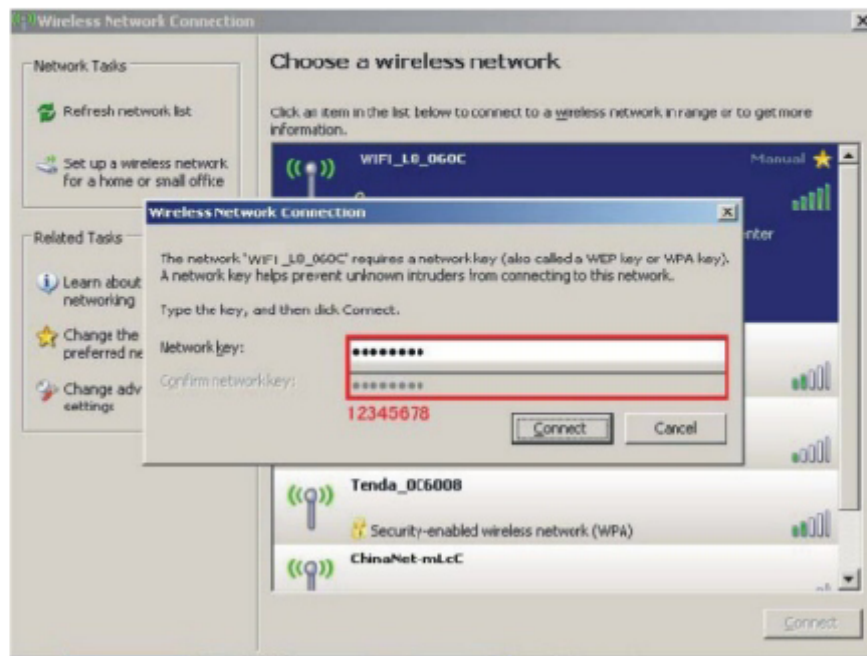
(1) Choose "wireless network connection" in the property option of the "network connection" on the desktop. Following the instruction of the picture, set the computer Internet protocol to be "Obtain an IP Address Automatically".



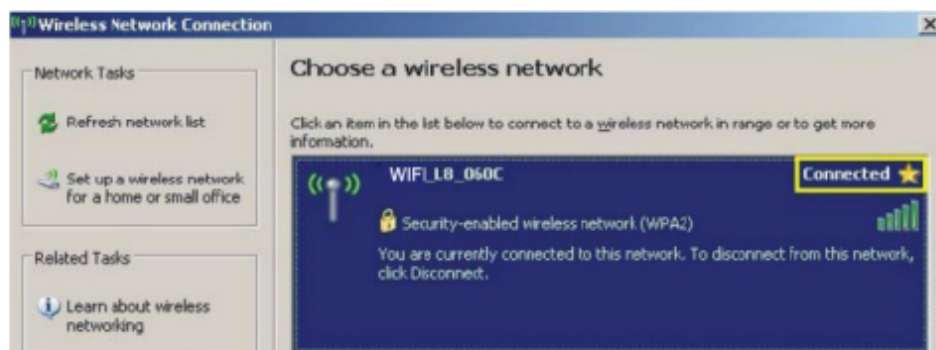
(2) Then, there will be an icon  at the bottom right corner of the computer. Right click the mouse and choose "View Available Wireless Networks" in the prompt box.



(3) In the pop-up network list, choose the required wireless network: WIFI-L8(L9) xxxx, click the "connection" button and input the password of WIFI. Factory default of WIFI password is 12345678



(4) When the interface displays "Already Connected", which indicates that the computer is successfully connected to this wireless network.



Network setting for the hotel

- (1) Push the switch to gear R. Under the intelligent mode, connect the network cable of the hotel or LAN port of upper-level router to network port of MPR series
- (2) Through WIFI, connect the Internet device wirelessly to MPR series. When the status indicator for MPR series is "Purple light is on continuously", it means the network connection is successful and the Internet can be visited.

Network setting for static IP

- (1) Push the switch to gear R. Connect LAN port of upper-level router to the WAN port of MPR series.
- (2) Through WIFI, connect the Internet device wirelessly to MPR series, input 192.168.10.1 into the address bar of the device's browser with the default user name of admin and password of admin, enter the setting interface of MPR series, click the operation mode, choose the mode of standard wireless router and click "OK". Wait for the restart of MPR series, enter the setting interface again, click the WAN setting-connection mode, choose static address (manual address configuration), input the IP address and gateway provided by ISP and click "OK".

Status	Mode	WAN	LAN	Wireless	Security	Server
Setup	Break Detection	MAC Clone	DDNS			
WAN Setup						
Connection Type	STATIC (fixed IP)					
IP Address	192.168.0.111					
Subnet Mask	255.255.255.0					
Default Gateway	192.168.0.1					
MTU	1500 (576~1500)					
Primary DNS Server	202.96.128.86					
Secondary DNS Server	202.96.134.133 (Optional)					

- (3) When the status indicator for MPR series is "Purple light is on continuously" it means the network connection is successful and the Internet can be visited.

Network setting for wireless AP

- (1) Push the switch to gear R and connect the Internet device to MPR series wirelessly through WIFI.
- (2) Input 192.168.10.1 into the address bar of the device's browser with the default user name of admin and password of admin, enter the setting interface of MPR series, click the operation mode, choose the mode of "Wireless AP+ Client mode" and click "OK". Wait for the restart of MPR series, enter the setting interface again, click the WAN setting-connection mode, click "Search for wireless network" and enter the setting interface of AP mode.

Status	Mode	Wifi-WAN	LAN	Wireless	Security	Server
▶ Setup	Break-Detection	MAC-Clone	DDNS			
WAN Setup						
Connection Type	ApClient-Static IP					
IP Address	0.0.0.0					
Subnet Mask	0.0.0.0					
Default Gateway	0.0.0.0					
MTU	1500 (576~1500)					
Primary DNS Server						
Secondary DNS Server	(Optional)					
Remote AP SSID						
WiFi Status	Disconnected					
	SEARCH AP...					

- (3) When the status indicator is "Blue light is on continuously", it means the dial is successful and the Internet can be visited.

FCC Caution: Any changes or modifications not expressly approved by the party responsible for compliance could void the user's authority to operate this equipment.

This device complies with Part 15 of the FCC Rules. Operation is subject to the following two conditions: (1) This device may not cause harmful interference, and (2) this device must accept any interference received, including interference that may cause undesired operation.

This device and its antenna(s) must not be co-located or operating in conjunction with any other antenna or transmitter.

NOTE: This equipment has been tested and found to comply with the limits for a Class B digital device, pursuant to Part 15 of the FCC Rules.

These limits are designed to provide reasonable protection against harmful interference in a residential installation. This equipment generates, uses and can radiate radio frequency energy and, if not installed and used in accordance with the instructions, may cause harmful interference to radio communications.

However, there is no guarantee that interference will not occur in a particular installation.

If this equipment does cause harmful interference to radio or television reception, which can be determined by turning the equipment off and on, the user is encouraged to try to correct the interference by one or more of the following measures:

- Reorient or relocate the receiving antenna.
- Increase the separation between the equipment and receiver.
- Connect the equipment into an outlet on a circuit different from that to which the receiver is connected.
- Consult the dealer or an experienced radio/TV technician for help.