

Foodservice Equipment • Material Handling, Healthcare & Cleanroom Equipment • Retail Display

Ice Chests 1800 Series



#B2IC-18 ice chest

Item #: _____
Model #: _____
Project #: _____
SIS #: _____

Optional Accessories	Model #	Qty.
Stainless steel legs		
Stainless steel feet		
Lexan [®] ice cover		
Cold plates		
Speed rails		



- NEW** • Standard models 8" (203mm) depth, newly added 12" and 16" (305 and 406mm) depth models.
- NEW** • All models now come standard with stainless steel sliding covers.
- Stainless steel all-welded construction with fiberglass insulation for non cold plate models.
 - 7-circuit cold plate with foamed-in-place insulation available in 24" (610mm) and longer models.
 - Ice bins are either fabricated or deep drawn 304 stainless steel, depending on size.
 - Welded crossbraced legs with adjustable plastic feet.
 - 5" (127mm) stainless steel backsplash.

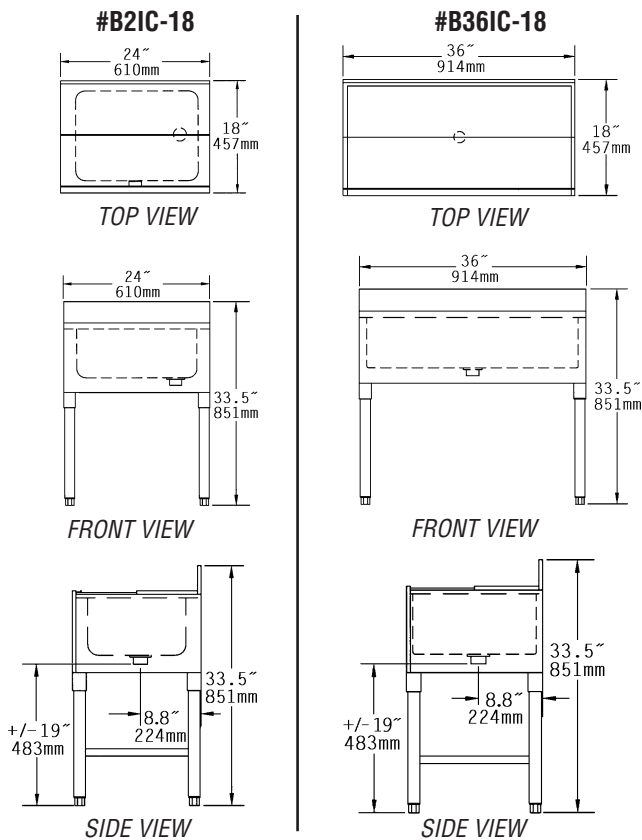
Spec sheets available for viewing, printing or downloading from our online literature library at www.eaglegrp.com

1800 Series Ice Chests

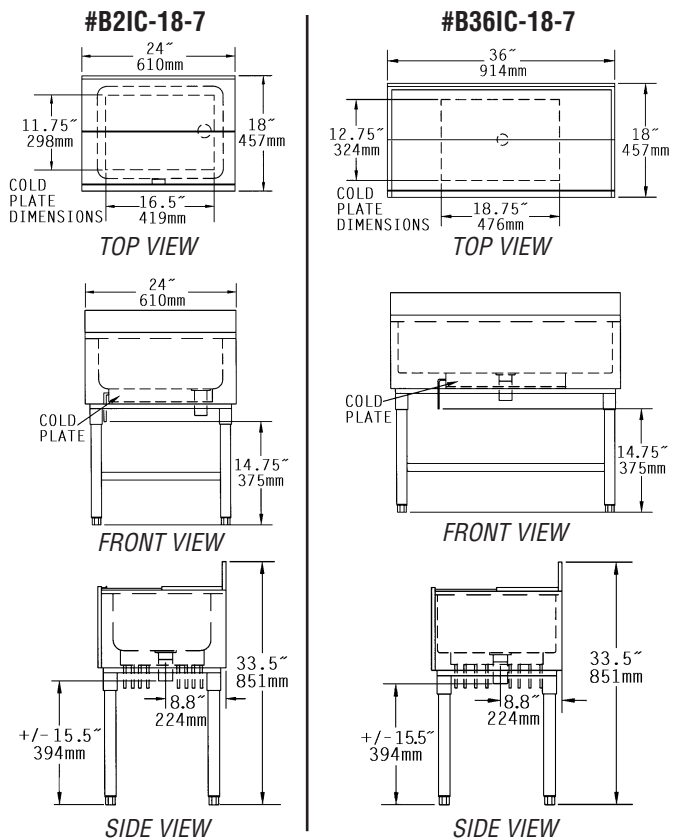
Design and Construction Features

- Stainless steel type 304 ice bin, backsplash, front, and ice cover.
- Stainless steel ends, galvanized back panel.
- 1½" (38mm) drain centered in ice bin front and back.
- 1½" (41mm) diameter heavy gauge crossbraced galvanized tubular legs with 12 gauge gussets.
- High-impact, corrosion-resistant, fully-adjustable bullet feet.
- 5" (127mm) backsplash.
- Fiberglass insulation for non-cold plate models.
- Ice bins are either deep-drawn one-piece construction or fabricated depending on depth, with 8", 12", or 16" (203, 305, or 406mm) depths available.
- Cold plates (models 24" and longer): aluminum casting with seven stainless steel beverage grade tubing circuits. Cold plates are mounted flush with interior bottom of ice bin for easy cleaning and maximum efficiency. Drain is ½" (13mm) NPT and centered in ice bin front and back. ¼" (6mm) tube connections provided.

Models without Cold Plate



Models with Cold Plate



width x length in. mm	weight lbs. kg	ice bin depth in. mm	ice capacity lbs. kg	model #
18" x 12" 457 x 305	23 10.4	8" 203	25 11.3	B121C-18
		12" 305	37 16.8	B121C-12D-18
		16" 406	49 22.2	B121C-16D-18
18" x 18" 457 x 457	35 15.9	8" 203	44 20.0	B181C-18
		12" 305	65 29.5	B181C-12D-18
		16" 406	87 39.5	B181C-16D-18
18" x 24" 457 x 610	50 22.7	8" 203	63 28.6	B21C-18 *
		12" 305	94 42.6	B21C-12D-18
		16" 406	125 56.7	B21C-16D-18
18" x 30" 457 x 762	60 27.2	8" 203	82 37.2	B301C-18
		12" 305	123 55.8	B301C-12D-18
		16" 406	163 73.9	B301C-16D-18

* Model #B21C-18 features deep-drawn seamless design ice bin.

width x length in. mm	weight lbs. kg	ice bin depth in. mm	ice capacity lbs. kg	model #
18" x 36" 457 x 914	70 31.8	8" 203	101 45.8	B361C-18
		12" 305	151 68.5	B361C-12D-18
		16" 406	201 91.2	B361C-16D-18
18" x 42" 457 x 1067	82 37.2	8" 203	120 54.4	B421C-18
		12" 305	180 81.6	B421C-12D-18
		16" 406	239 108.4	B421C-16D-18
18" x 48" 457 x 1219	94 42.6	8" 203	139 63.1	B481C-18
		12" 305	208 94.3	B481C-12D-18
		16" 406	278 126.1	B481C-16D-18

7-circuit cold plate available for 24" (610mm) and longer. Add suffix "-7" to model number. Example: B21C-18-7

Optional Lexan® ice cover available for "B2" models only. Add suffix "N" to model number. Example: NB21C-18