

COGENT SYSTEMS

Instruction for Mobile Ident IIIc (Mi3c)



2009-6-29

Table of Content

- 1. Power On Mobile Ident IIIc (Mi3c).....3**
- 2. Manual Check.....4**
 - 2.1. Memory.....4
 - 2.2. Display.....5
 - 2.3. Screen.....5
 - 2.4. Key.....6
 - 2.5. Magcard.....6
 - 2.5.1. Swipe card.....7
 - 2.5.2. Contactless Card.....7
 - 2.5.3. ICCARD.....8
 - 2.6. Voice.....8
 - 2.7. VibratMotor.....9
 - 2.8. Finger Adjust.....9
 - 2.9. Finger Camera.....9
 - 2.10. Facial Camera.....10
 - 2.11. Power.....10
 - 2.12. WIFI.....11
 - 2.13. GPS.....11
 - 2.14. GPRS.....12
 - 2.15. Bluetooth.....12
 - 2.16. Barcode.....13
- 3. Photo.....15**
- 4. Settings.....15**
 - 4.1. Volume.....16
 - 4.2. Date.....16
 - 4.3. Screen Calibration.....17
 - 4.4. Fingerprint Calibration.....17
 - 4.5. LCD.....18
- 5. Identify.....18**
 - 5.1. Enroll.....18
 - 5.2. Search.....20

1. Power On Mobile Ident IIIc (Mi3c)

Press power button to power on the device.



Login page will show up once the device is powered on. Enter user name and password (Test Demo: Username-Cogent, Password-3259600), click Login to go into the Front Page (Fig. 1)



Fig. 1

2. Manual Check

Click Manual Check in Front Page, MobileID II Test page will show up. MobileID II Test page is the main page of Manual Check.



2.1. Memory

Click Memory, Memory Check dialogue will pop up. Click Start, it will calculate the memory disk automatically. After finishing memory calculation, click Quit (Fig. 2.1).

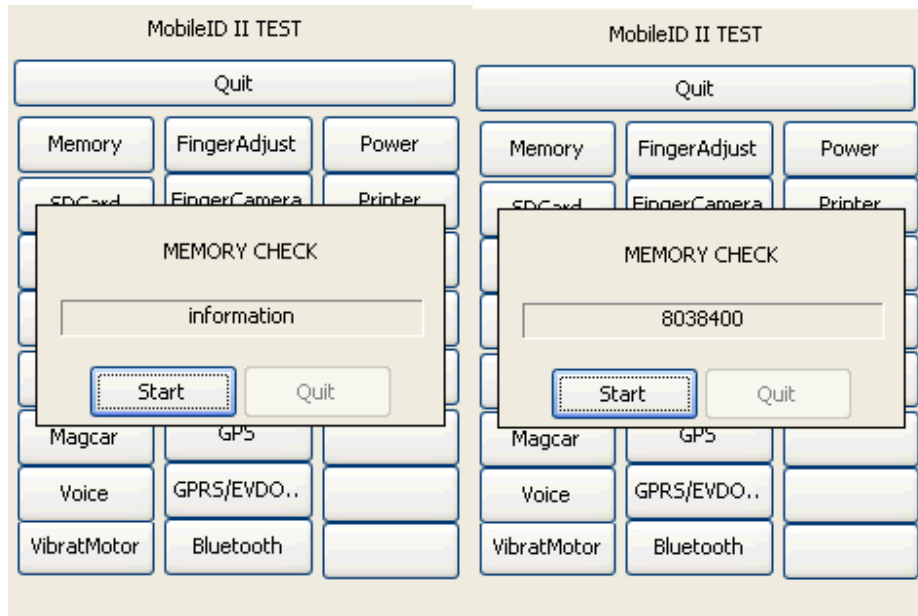
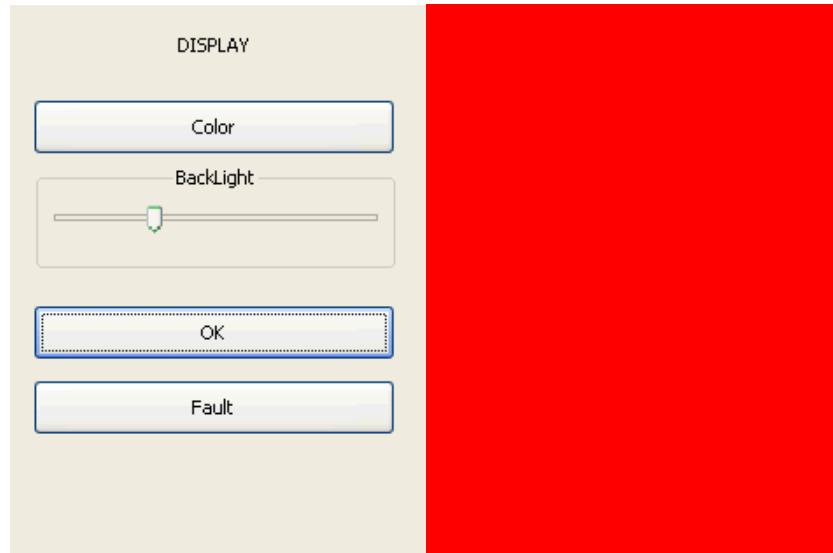


Fig.2.1

2.2. Display

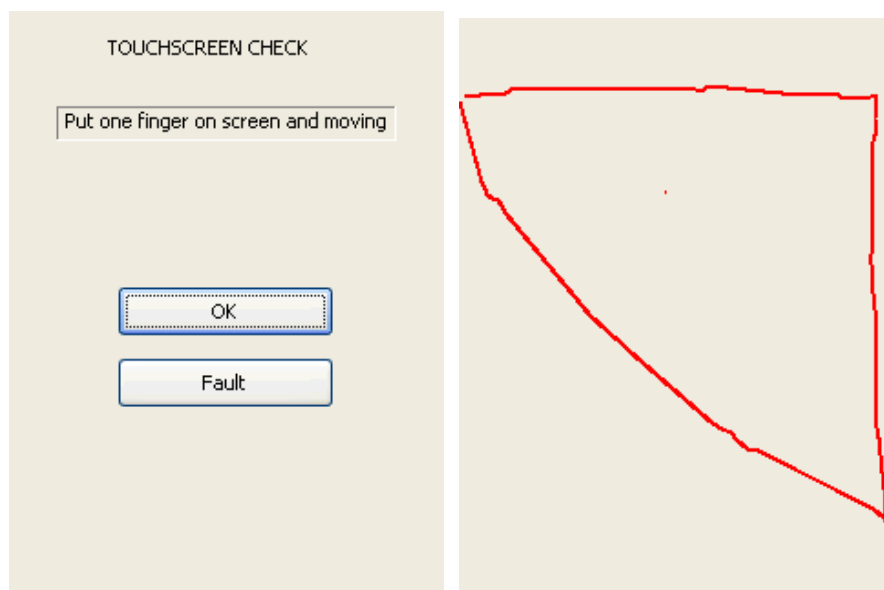
Click Display and get into it. Click Color, the screen will turn to red, blue, white and black automatically. After that it will go back to Display page.



Adjust backlight by using BackLight Adjust Bar. Click OK to return to MobileID II Test page if there is no error.

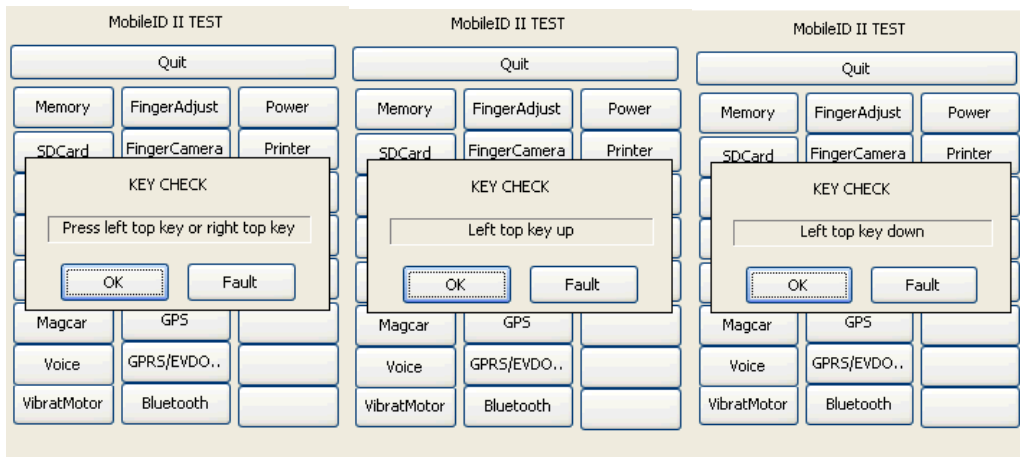
2.3. Screen

Click Screen and get into Touchscreen Check page. Click anywhere on the screen (exclude OK and Fault) and get into the blank page. Write anything you wish to write, check the fluency of the touch screen, then press cancel button (power button) back to the Touchscreen Check page, click OK to return to the manual check page.



2.4. Key

Click Key, Key Check dialogue will pop up. Power button (cancel button) is the right top key and OK button is the left top key. The interface will show the corresponding action when press cancel button and OK button. Press OK button, Left top key down will pop up, loosen it, Left top key up will pop up. Then use the same method to check cancel button. Click OK if it pass the test, click Fault if it is failed.



2.5. Magcard

Click Magcar and get into it. Three kinds of card testing is included: Swipe Card, Contactless Card and ICCARD (test tools include one swipe card, two kinds of contactless card, one IC card, one swipe card reader and one contactless card and IC card reader). Please refer to Fig. 2.5.

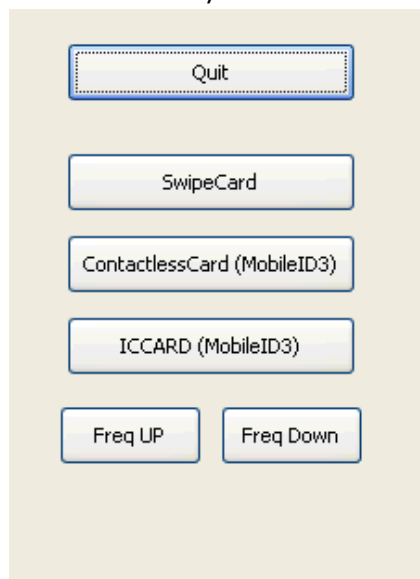




Fig.2.5

2.5.1. Swipe Card

Install the swipe card reader on the back of device. Click Swipe Card and go to the test page. Swipe the magcard on the swipe card module, there should be three rows of information of the card showing in the blank box (Fig.2.5.1).

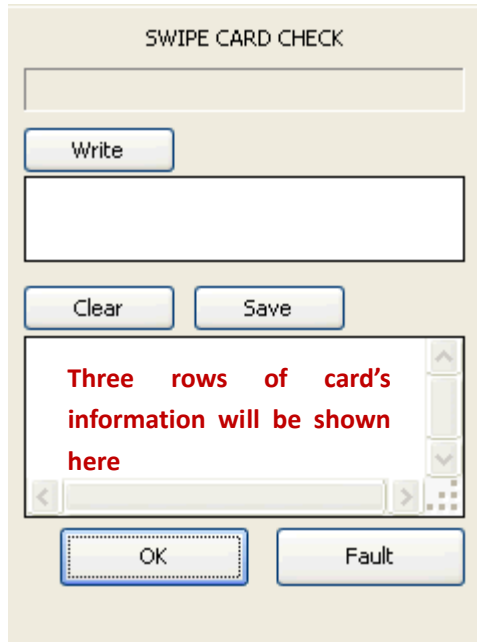


Fig.2.5.1

2.5.2. Contactless Card

Install the contactless and IC card reader, put the Mifare and Desfire card individually in front of the reader, the distance between them and reader should be within 4-4.5cm and 1.5-2cm. Click writing area, keypad will pop up, write information items in writing area, input item quantity in the numeric area. For example, enter '123' in writing area. Information '123' is made of 3 individual items, then in numeric area, it should be '3'. Please note that the quantity number in numeric area must no more than the quantity of information items. Please refer to Fig. 2.5.2.

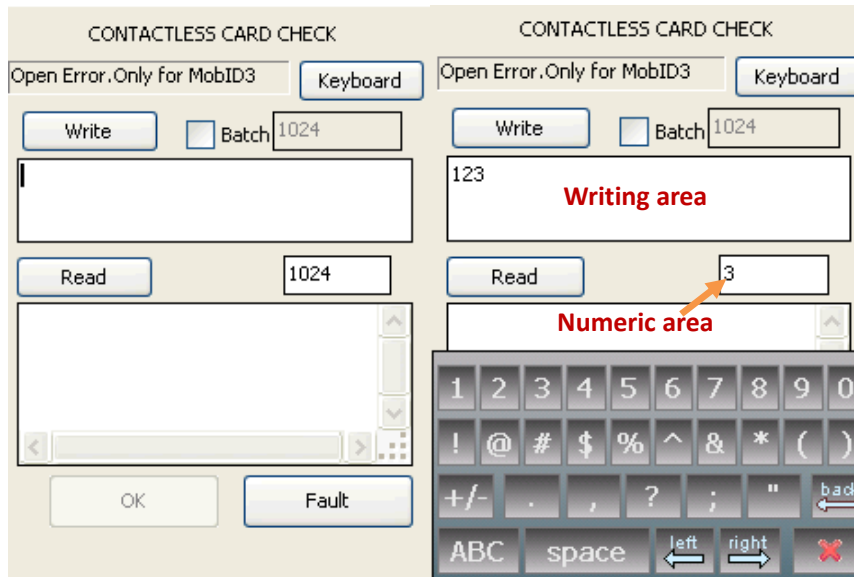


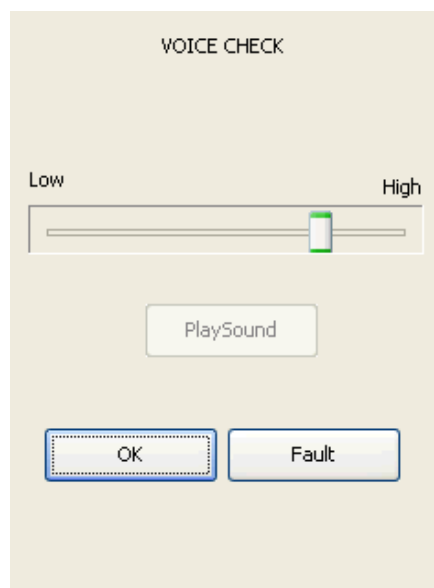
Fig.2.5.2

2.5.3. ICCARD

Insert IC card into the IC card reader, click ICCARD, test procedure is the same as contactless card.

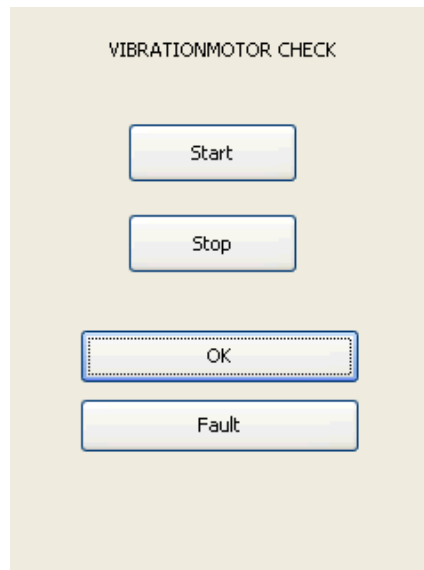
2.6. Voice

Click Voice and get into it. Adjust voice by adjusting the voice bar.



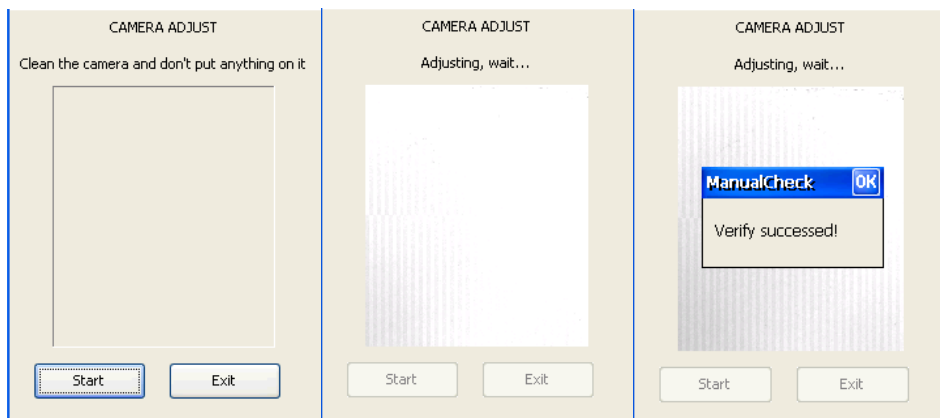
2.7. VibratMotor

Click VibratMotor and get into it. Press Start, the device will be vibrated, press Stop, it will stop to vibrate.



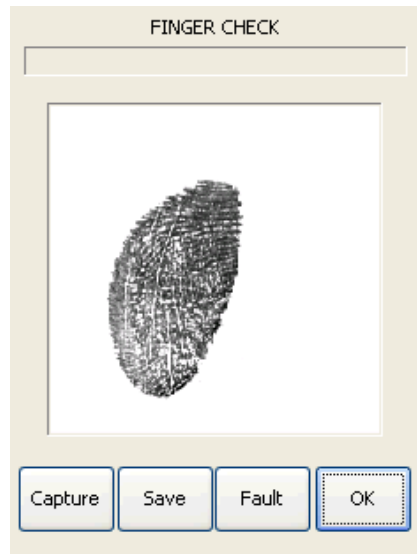
2.8. Finger Adjust

Click FingerAdjust and get into Camera Adjust page. Clean the fingerprint sensor, then click start to adjust the camera. Click OK on the pop up dialogue after adjusting camera.



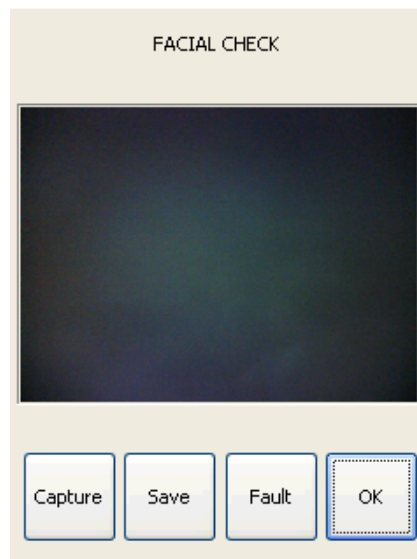
2.9. Finger Camera

Click FingerCamera and get into Finger Check page. Put your finger in the fingerprint sensor, click Capture to capture the fingerprint, click Save to save it. Connect the Mi3c to PC to check the fingerprint image quality.



2.10. Facial Camera

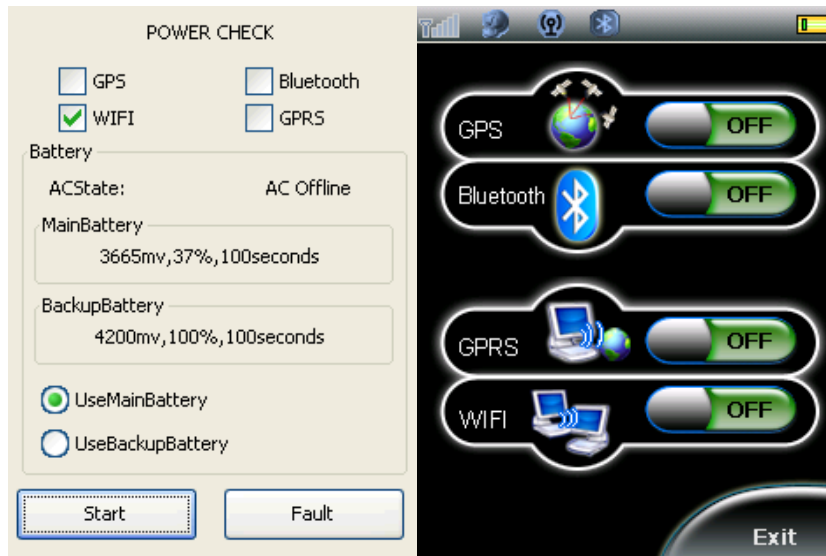
Click FacialCamera to get into Facial Check page. Click Capture to capture the image, click Save to save the image. Connect the device to PC to check the image.



2.11. Power

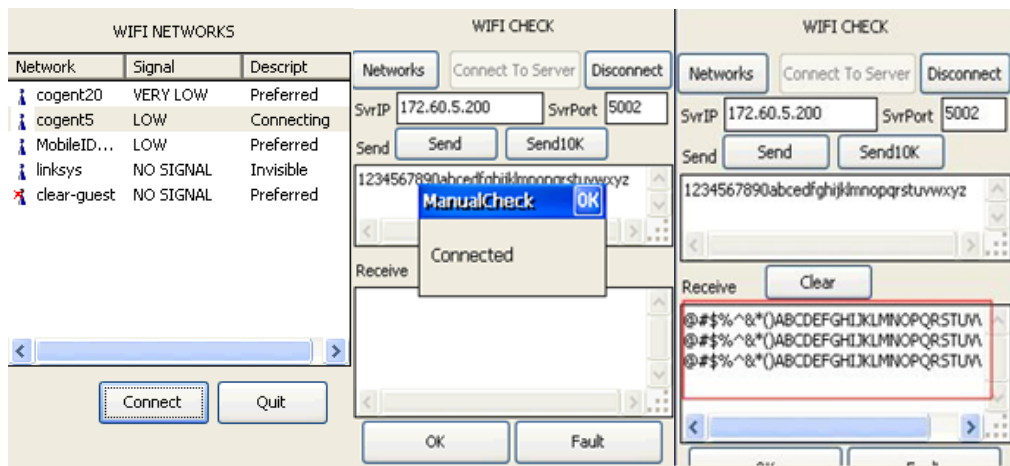
Click Power to get into Power Check page. Select wireless you wish to open. To open wireless, you can also go into Wireless page in Front page. In Power Check page, you can also check the main and backup battery.

Note: Cannot open GPS, Bluetooth, Wifi and GPRS together. When you wish to use one of the wireless, you have to power off other wireless module.



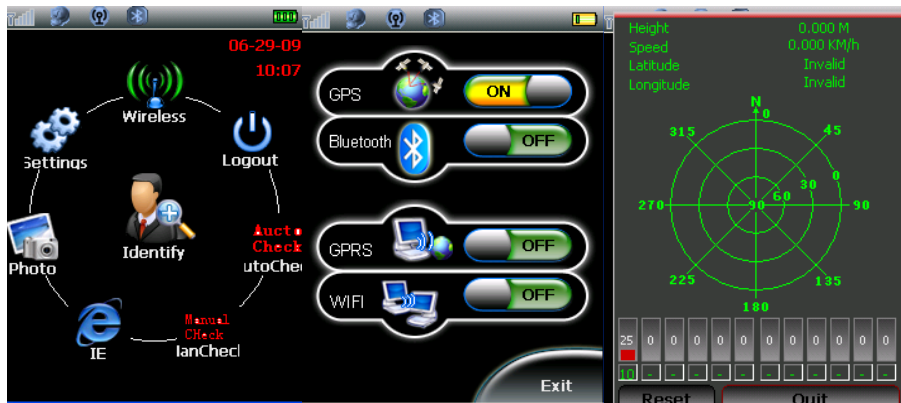
2.12. WIFI

Go into Power Check page or Wireless page to power on the Wifi module. Make sure other wireless modules are power off. Then Click WIFI in Manual Check and get into Wifi Check page. Change the server IP as 172.60.5.142. Click Networks to get into Wifi Networks page, choose the best signal network, click Connect. Once it shows Connected, click Quit back to Wifi Check page. Click Connect To Server, a dialogue box will pop up indicating Connected. Some information will show under Receive.



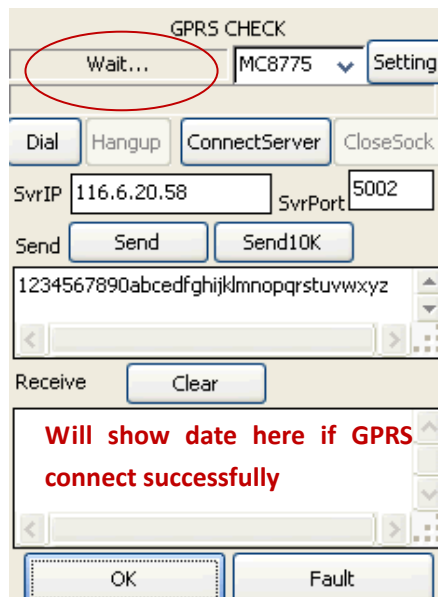
2.13. GPS

Go into Front page. Click Wireless, power on GPS module. Click the little earth icon and it will search the location automatically.



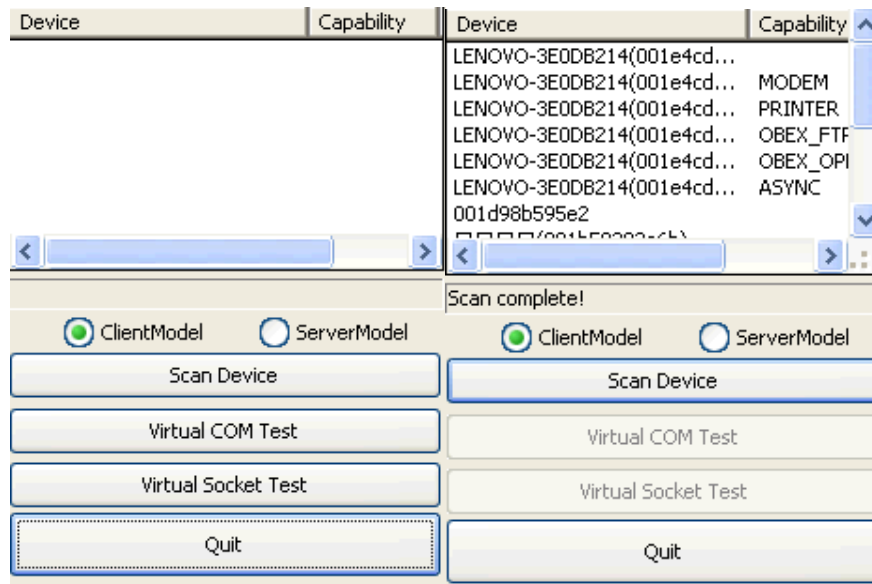
2.14. GPRS

Insert SIM card before check the GPRS. Go into Power Check page or Wireless page to power on the GPRS module. Make sure other wireless modules are power off. Click GPRS in Manual Check and get into GPRS Check. Change server IP as 116.6.20.59. then click Dial, waiting for the top right dialogue turn to Connected. Click Connect Server, a dialogue box will pop up to show Connected. There are some information shows under the Receive.



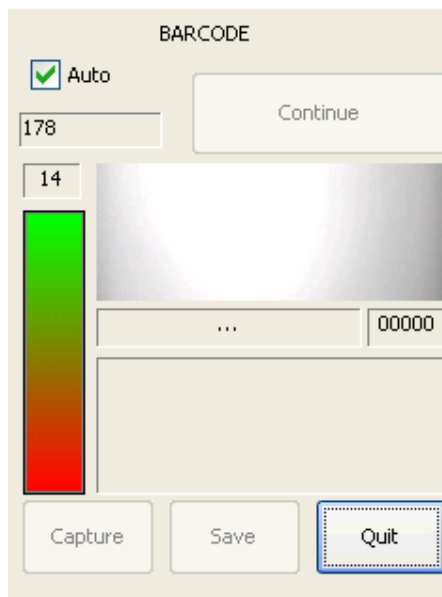
2.15. Bluetooth

Go into Power Check page or Wireless page to power on the Bluetooth module. Make sure other wireless modules are power off. Click Bluetooth in Manual Check and get into it. Click Scan Device. It will scan devices automatically. Click Quit back to Manual Check.



2.16. Barcode

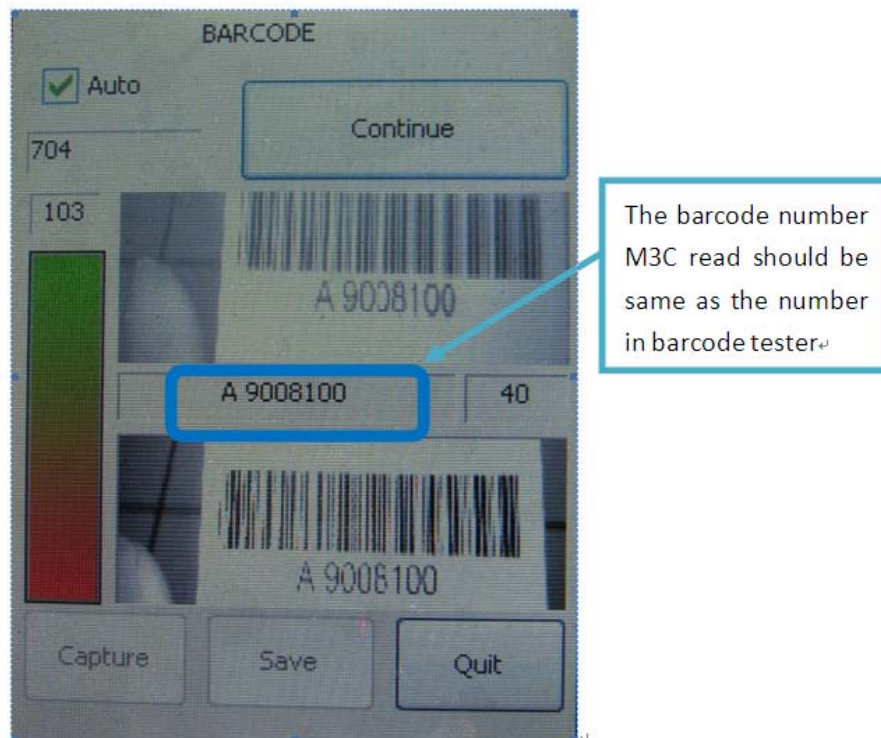
Click Barcode in Manual Check and get into it.



Barcode camera light (red) will turn on while scanning barcode. The distance between barcode tester and Mi3c should be in 8-16cm.



After the beep, Mi3c finish scanning the barcode. Now the barcode data is showed on the barcode page. Please notice the scanned barcode under should be same as the number on barcode tester.



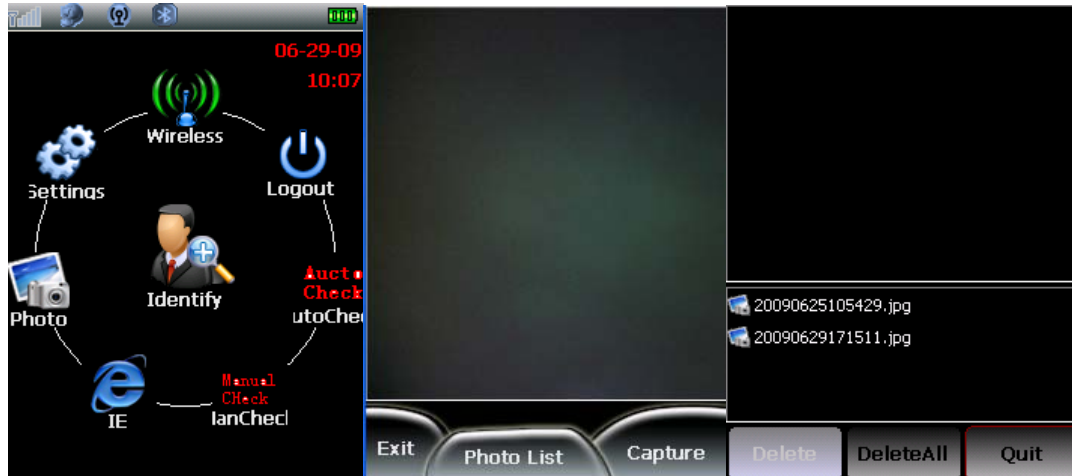
Click Continue to scan another barcode.

Note: make Mi3c and barcode tester steady, do not trembling. Ensure indoor light is bright enough. Otherwise Mi3c may fail to scan the barcode because of the light spot on the barcode tester. Make sure the whole barcode is inside the scan frame. The distance between Mi3c and

barcode tester is in 8-16cm (can be adjusted according the scan situation).

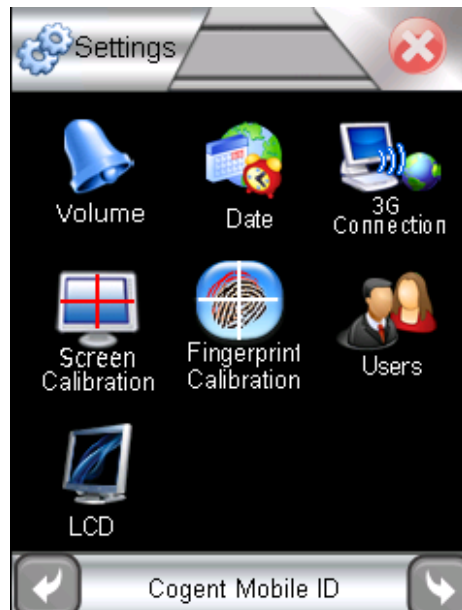
3. Photo

Click Photo in Front page. Click Capture to capture the image. Click Photo List, it will show all photos you captured. Click Exit back to Front page.



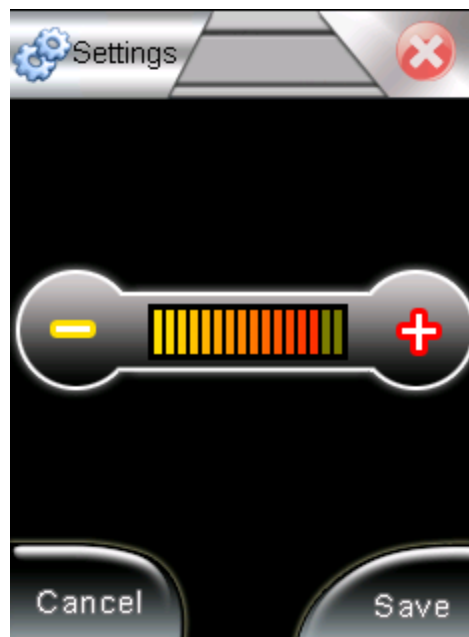
4. Settings

Click Settings in Front page.



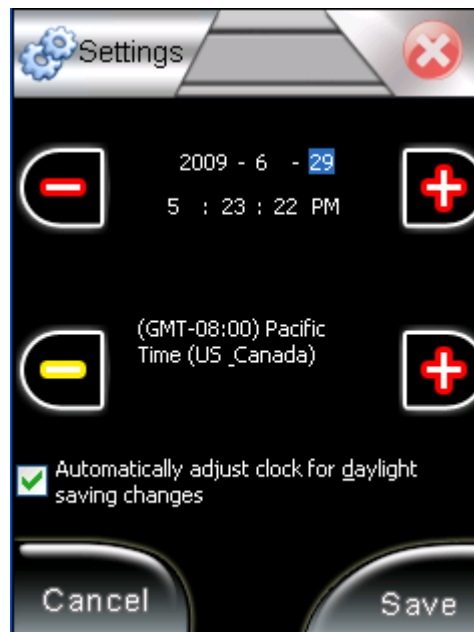
4.1. Volume

Click Volume and get into it. Adjust the volume by adjusting volume bar.



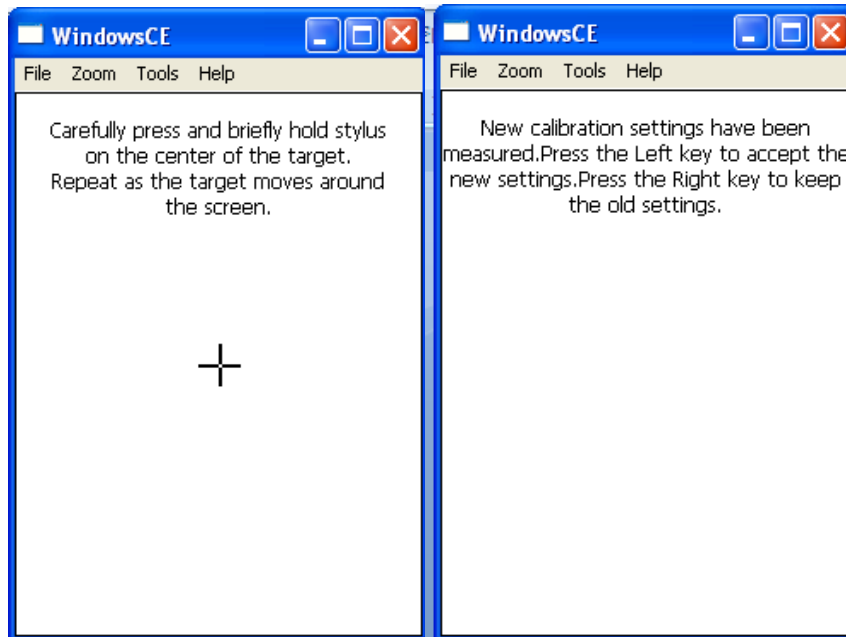
4.2. Date

Click Date, adjust the date by clicking ‘-’ or ‘+’. Click Save to save your change.



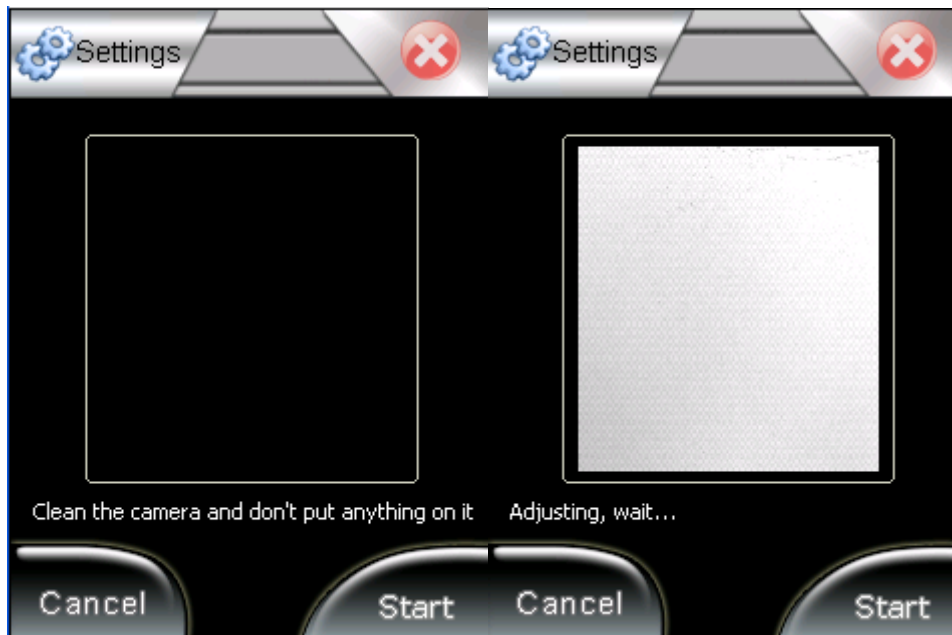
4.3. Screen Calibration

Click Screen Calibration and get into it. Click the central of the cross until it finished the calibration.



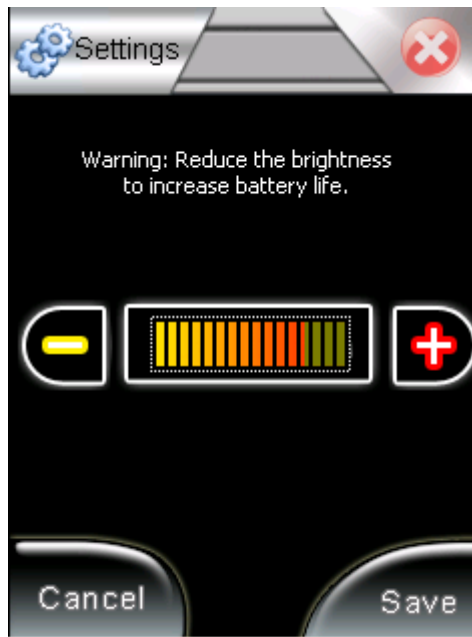
4.4. Fingerprint Calibration

Click Fingerprint Calibration and get into it. Clean the fingerprint sensor, click Start. It will calibrate the sensor automatically. After calibrating, it will return to the Settings page automatically.



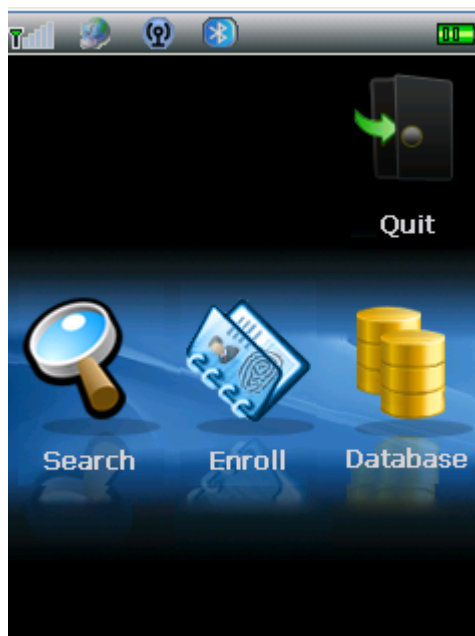
4.5. LCD

Click LCD and get into it. Adjust the LCD brightness by clicking '-' or '+', click Save to save change.



5. Identify

Click Identify in Front page and get into it.



5.1. Enroll

Click Enroll and get into Base Information. After enter all the basic information, click Save to save it. Click OK to go to the next step.



The next step is fingerprints captured. Enter ten fingerprints as instructed, it will capture fingerprints automatically. After capturing ten fingerprints, click Save to save the data then click OK, it will go into next step.



The next step is face image captured. 5 face image need to be captured: Face_0, Face_L45, Face_R45, Face_L90, Face_R90. Click Capture to capture the face image, click Save to save the data, click OK to return back to main page.

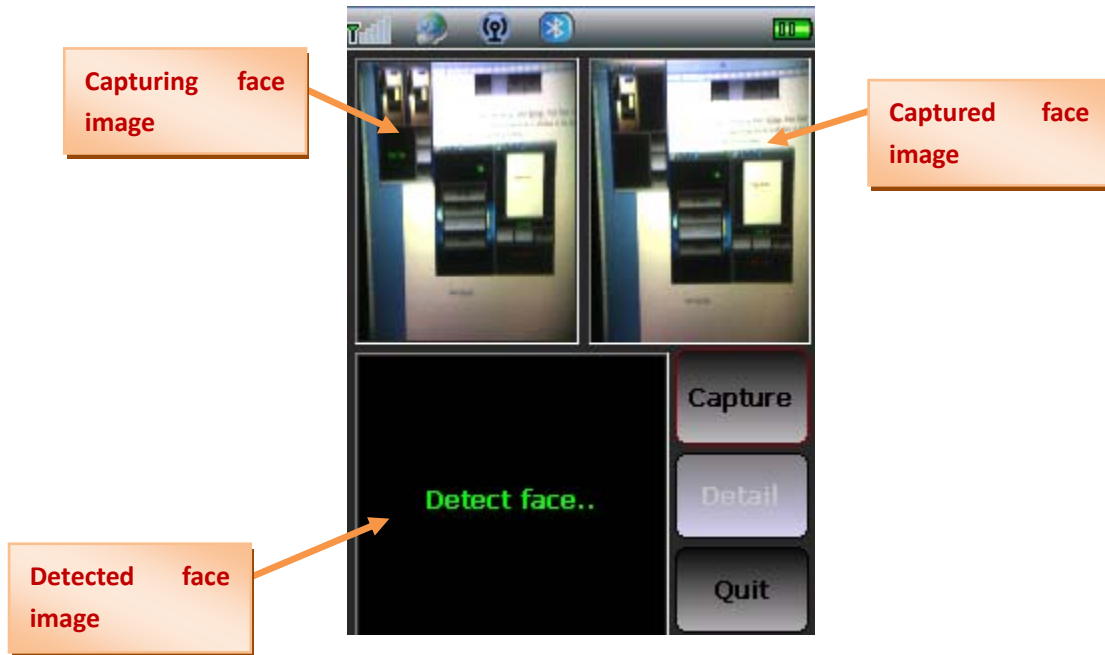


5.2. Search

Click Search, a dialogue will pop up. Select ByFinger. Press finger on the fingerprint sensor. If the fingerprint get the hit, it will show on the top, and corresponding facial image will show below.



Select ByFacial.



FCC STATEMENT

This device complies with Part 15 of the FCC Rules.

Operation is subject to the following two conditions:

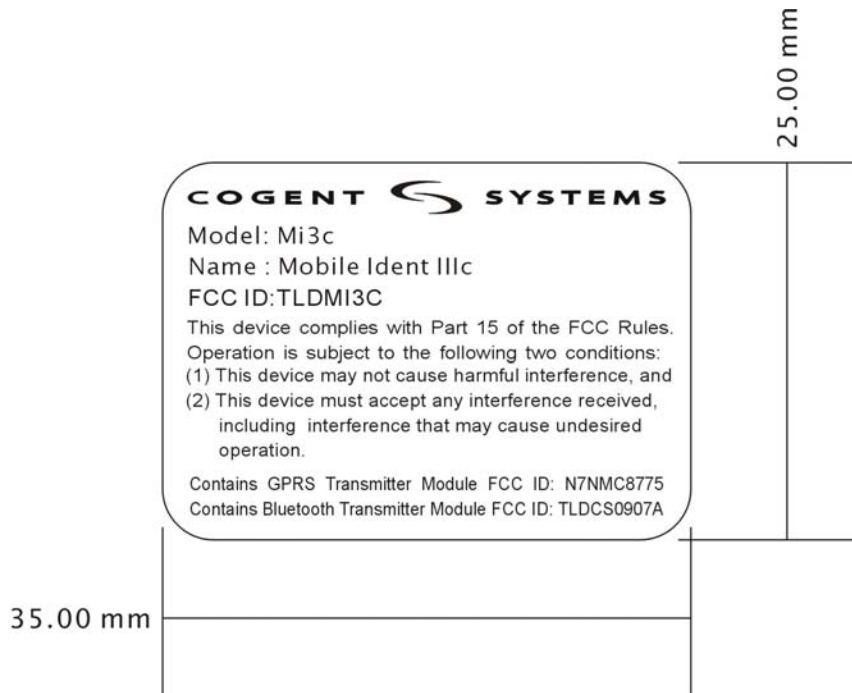
- (1) This device may not cause harmful interference, and
- (2) This device must accept any interference received, including interference that may cause undesired operation.

FCC CAUTION:

Changes or modifications not expressly approved by the party responsible for compliance could void the user's authority to operate the equipment.

FCC RADIATION EXPOSURE STATEMENT

This equipment complies with FCC RF radiation exposure limits set forth for an uncontrolled environment. This equipment should be installed and operated with a minimum distance of 20 centimeters between the radiator and your body.



NOTE: This equipment has been tested and found to comply with the limits for a Class B digital device, pursuant to Part 15 of the FCC Rules. These limits are designed to provide reasonable protection against harmful interference in a residential installation. This equipment generates, uses and can radiate radio frequency energy and, if not installed and used in accordance with the instructions, may cause harmful interference to radio communications. However, there is no guarantee that interference will not occur in a particular installation. If this equipment does cause harmful interference to radio or television reception, which can be determined by turning the equipment off and on, the user is encouraged to try to correct the interference by one or more of the following measures:

- Reorient or relocate the receiving antenna.
- Increase the separation between the equipment and receiver.
- Connect the equipment into an outlet on a circuit different from that to which the receiver is connected.
- Consult the dealer or an experienced radio/TV technician for help.