

RF-READER 安装及测试方法

RFREADER USER MANUAL

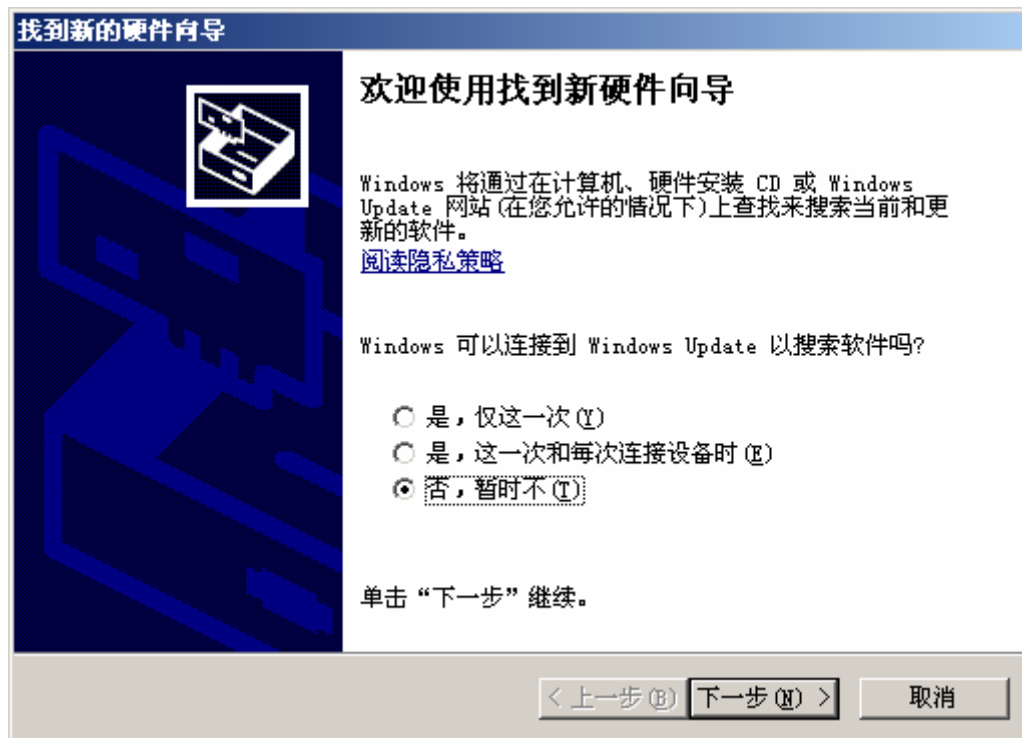
准备：读卡器、非接触卡（Desfire、Mifare）、驱动、Demo(CLR2007.exe)

Preparations: RF-READER, contact less card(Desfire、Mifare), driver, Demo(CLR2007.exe)

● 驱动安装：

Driver installation:

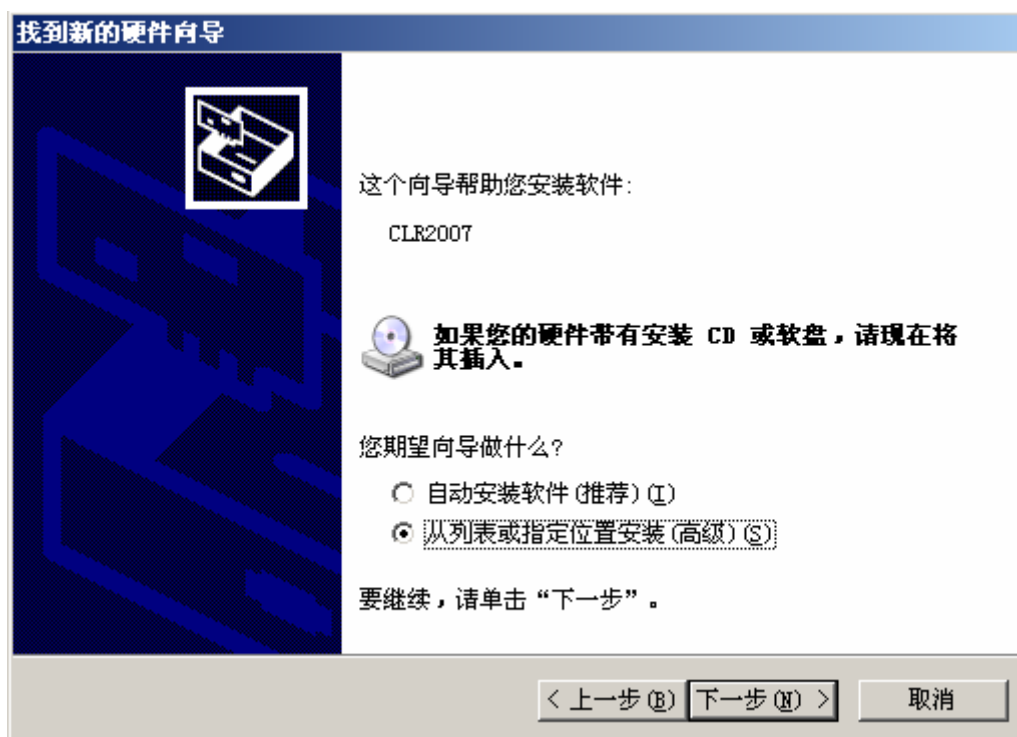
一、设备接入计算机，提示驱动安装，选择“否，暂时不”继续“下一步 (N)”如下图：
Connect the RF-READER to PC. While the message box suggesting you to install the driver, choose “N, temporarily” and then choose “next” as picture below:



(DRIVERINSTALL_1)

二、选择“从列表或指定位置安装（高级）”，选择“下一步 (N)”，如下图：

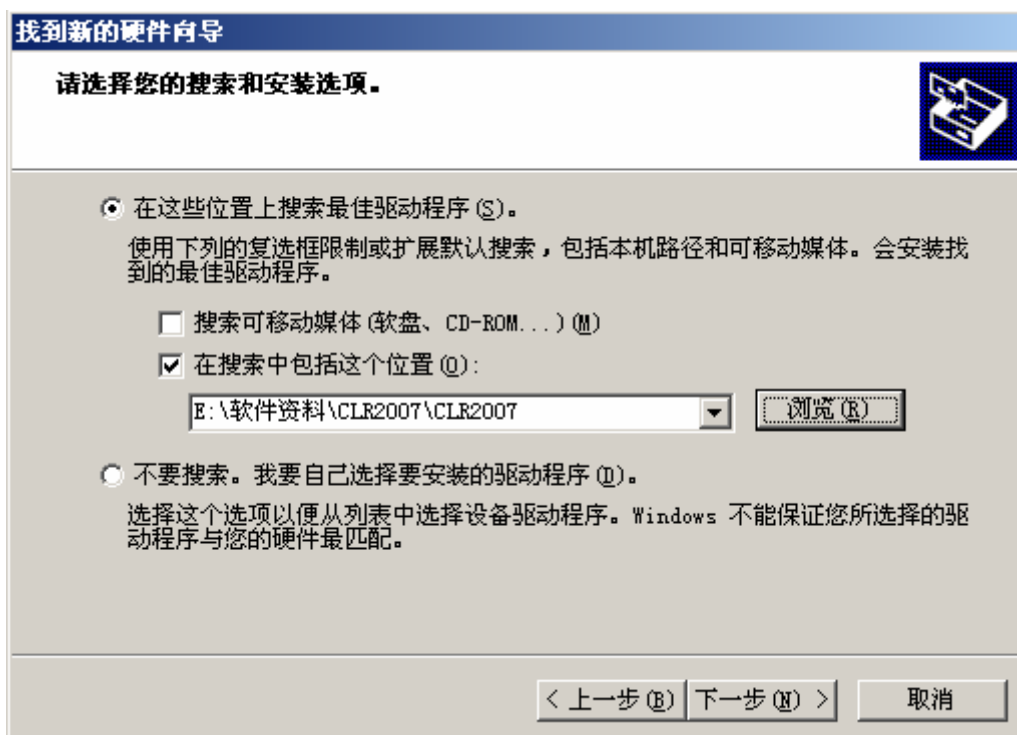
Choose the item “select from list or specified path (senior).Then press “next (N)”. See the picture.



(DRIVERINSTALL_2)

三、浏览到驱动文件所放文件夹，确定，选择“下一步 (N)”如下图，

Browse the driver's documents, press "Y" and choose "next (N)" as the following picture:



(DRIVERINSTALL_3)

四、开始安装驱动程序，如下图：

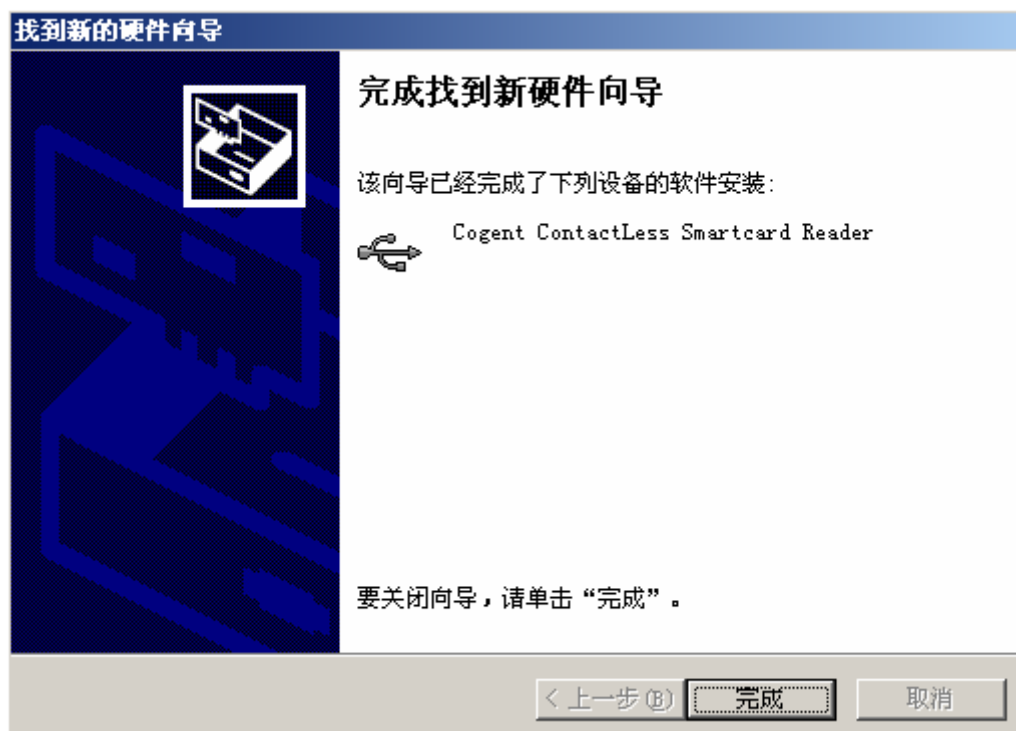
Start to install the driver. See the picture below:



(DRIVERINSTALL_4)

五、驱动安装完成，选择“完成”，如下图，

When the installation is completed, choose “done”.

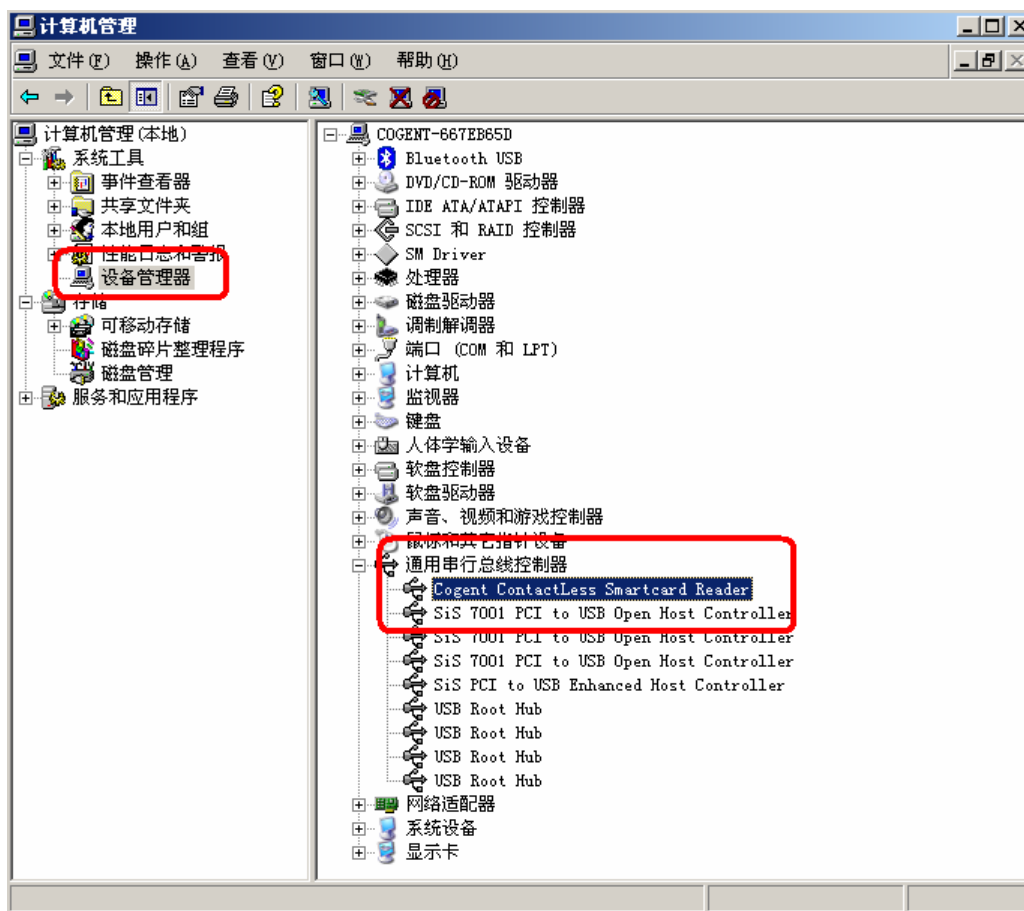


(DRIVERINSTALL_5)

六、确认驱动安装，在桌面“我的电脑”右键选择“管理”，打开“计算机管理”，选择“设备管理器”，看是否驱动已经正确安装，如下图，为驱动已经安装正确：

Confirm if the driver has been installed well. Press “my computer” by right key and choose

“manage”. After open the “computer management”, select “device controller” to check if the driver has been installed well. Look at the picture below, it suggests that the driver has been installed well.

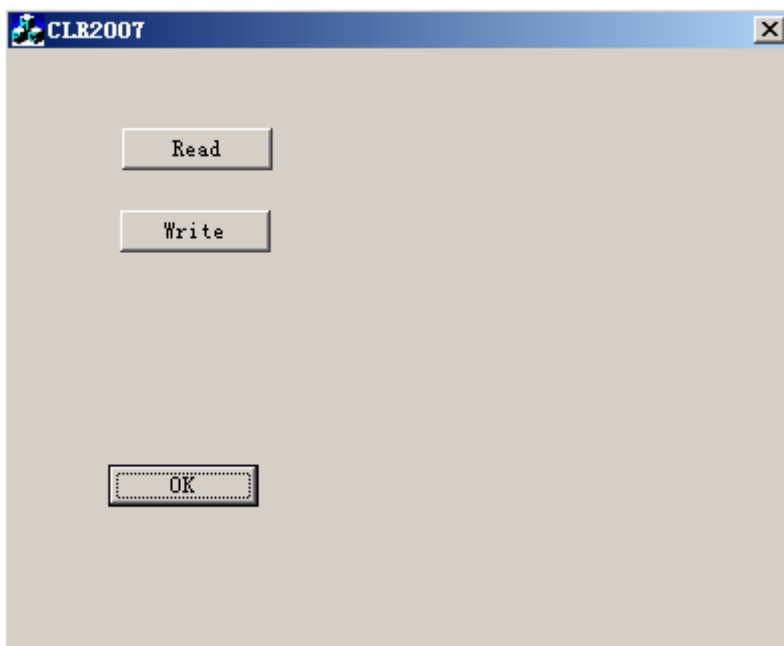


● 使用方法:

Operation manual:

一、打开 Demo 程序 “CLR2007.exe”，如下图:

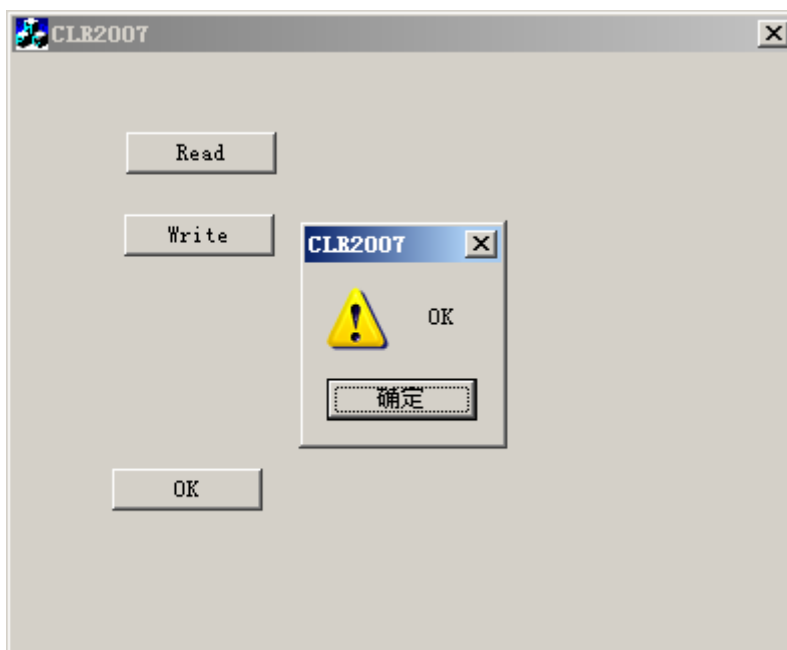
Open the Demo program “CLR2007.exe”，see the picture below:



(DEMO)

二、将卡移至读卡区，选择“Read”提示“OK”，读卡成功，如下图：

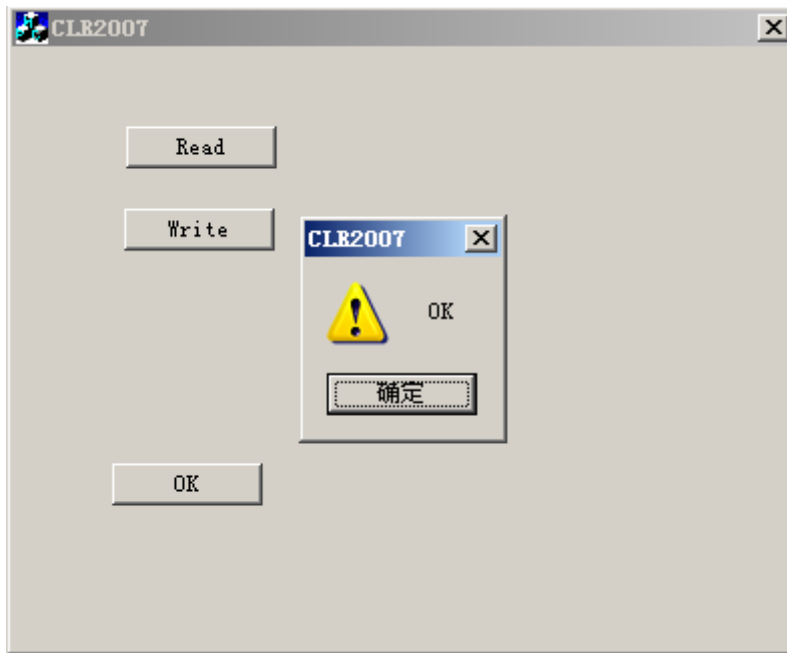
Put the card upon the reading area. Then choose “read”, while message box suggests that it is well done. The reading procedure is completed.



(READ)

二、将卡移至读卡区，选择“write”提示“OK”，写卡成功，如下图：

Put the card upon the reading area. Then choose “write”, while message box suggests that it is well done. The writing procedure is completed.



(WRITE)

FCC INFORMATION

This device complies with Part 15 of the FCC Rules. Operation is subject to the following two conditions: (1) this device may not cause harmful interference, and (2) this device must accept any interference received, including interference that may cause undesired operation.

Changes or modifications not expressly approved by the party responsible for compliance could void the user's authority to operate the equipment.

This equipment complies with FCC radiation exposure limits set forth for an uncontrolled environment. End users must follow the specific operating instructions for satisfying RF exposure compliance. This transmitter must not be co-located or operating in conjunction with any other antenna or transmitter.

This device complies with FCC RF radiation exposure limits set forth for an uncontrolled environment. The antenna used for this transmitter must be installed to provide a separation distance of at least 20 cm from all persons and must not be co-located or operating in conjunction with any other antenna or transmitter.

This equipment has been tested and found to comply with the limits for a Class B digital device, pursuant to Part 15 of the FCC Rules. These limits are designed to provide reasonable protection against harmful interference in a residential installation. This equipment generates, uses and can radiate radio frequency energy and, if not installed and used in accordance with the instructions, may cause harmful interference to radio communications. However, there is no guarantee that interference will not occur in a particular installation.

If this equipment does cause harmful interference to radio or television reception, which can be determined by turning the equipment off and on, the user is encouraged to try to correct the interference by one or more of the following measures:

- Reorient or relocate the receiving antenna.
- Increase the separation between the equipment and receiver.
- Connect the equipment into an outlet on a circuit different from that to which the receiver is connected.
- Consult the dealer or an experienced radio/TV technician for help.

The installer of this radio equipment must ensure that the antenna is located or pointed such that it does not emit RF field in excess of Health Canada limits for the general population; consult Safety Code 6, obtainable from Health Canada's website www.hc-sc.gc.ca/rpb.