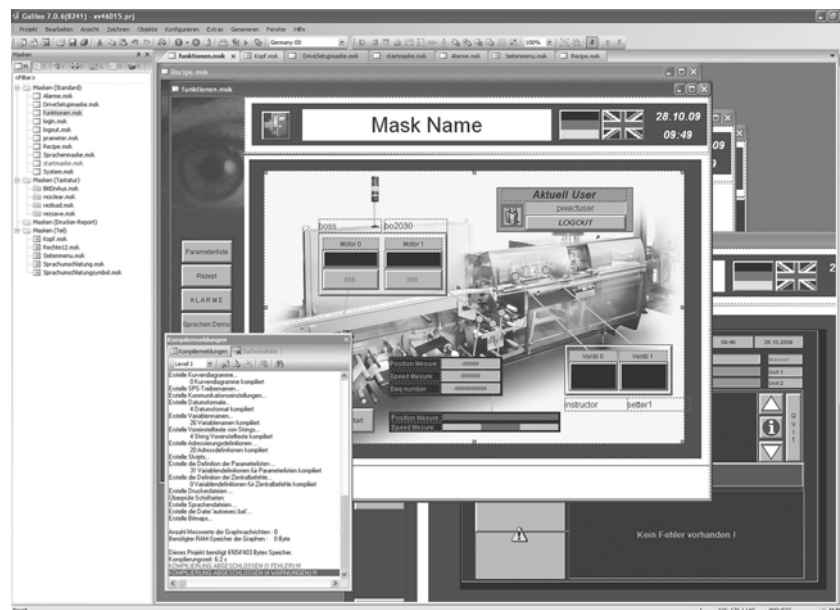


Communication SIMOTION



Imprint

Manufacturer

Eaton Automation AG
Spinnereistrasse 8-14
CH-9008 St. Gallen
Schweiz

www.eaton-automation.com

www.eaton.com

Support

Region North America
Eaton Corporation
Electrical Sector
1111 Superior Ave.
Cleveland, OH 44114
United States
877-ETN-CARE (877-386-2273)
www.eaton.com

Other regions

Please contact your supplier or send an E-Mail to:

automation@eaton.com

Original instructions

The German version of this document is the original instructions.

Editor

Werner Rohner

Brand and product names

All brand and product names are trademarks or registered trademarks of the owner concerned.

Copyright

© Eaton Automation AG, CH-9008 St. Gallen

All rights reserved, also for the translation.

None of this document may be reproduced or processed, duplicated or distributed by electronic systems in any form (print, photocopy, microfilm or any other process) without the written permission of Eaton Automation AG, St. Gallen.

Subject to modifications.

Contents

| | | |
|----------|--|-----------|
| 1 | General..... | 4 |
| 1.1 | Purpose of this user manual | 4 |
| 1.2 | Comments about this user manual | 4 |
| 1.3 | Additional documentation | 4 |
| 2 | Communication overview..... | 5 |
| 2.1 | Operating principle | 5 |
| 2.2 | Supported systems | 6 |
| 2.2.1 | Client | 6 |
| 2.2.2 | Server | 6 |
| 2.3 | Supported data..... | 6 |
| 2.3.1 | Addresses | 6 |
| 2.3.2 | Variable type | 6 |
| 2.3.3 | Data type..... | 7 |
| 2.3.4 | Arrays and structures | 7 |
| 3 | Hardware..... | 8 |
| 4 | Network | 9 |
| 5 | Software..... | 10 |
| 5.1 | SIMOTION | 10 |
| 5.1.1 | Installation | 10 |
| 5.1.2 | Configuration | 10 |
| 5.2 | GALILEO..... | 11 |
| 5.2.1 | Configuring communication in GALILEO | 11 |
| 5.2.2 | Addressing variables in GALILEO | 12 |
| 5.3 | THC..... | 13 |
| 5.3.1 | Configuration | 13 |
| 5.3.2 | Addressing | 13 |

1 General

1.1 Purpose of this user manual

This user manual provides the information required for connecting Eaton Automation automation components to «SIMOTION».

This user manual describes the installation and configuration. The operating system and application software are not described.

1.2 Comments about this user manual

Please send any comments, recommendations or suggestions relating to this user manual to automation@eaton.com.

1.3 Additional documentation

Further documents may be helpful in addition to this user manual.

The following documentation can be obtained from our website (www.eaton-automation.com):

- [1] MN05010007Z
System Description Windows CE
- [2] MN05010009Z
System Description Networks in Brief

The following documentation can be obtained from Siemens:

- [3] Configuration manual «SIMOTION Technology Package OAMIF»

2 Communication overview

2.1 Operating principle

The communication is based on TCP/IP. The «SIMOTION Technology Package OAMIF» installed on the «SIMOTION» is used as the communication server. This server can be accessed by several clients on the TCP Port 6443. The communication server allows read and write access to variables.

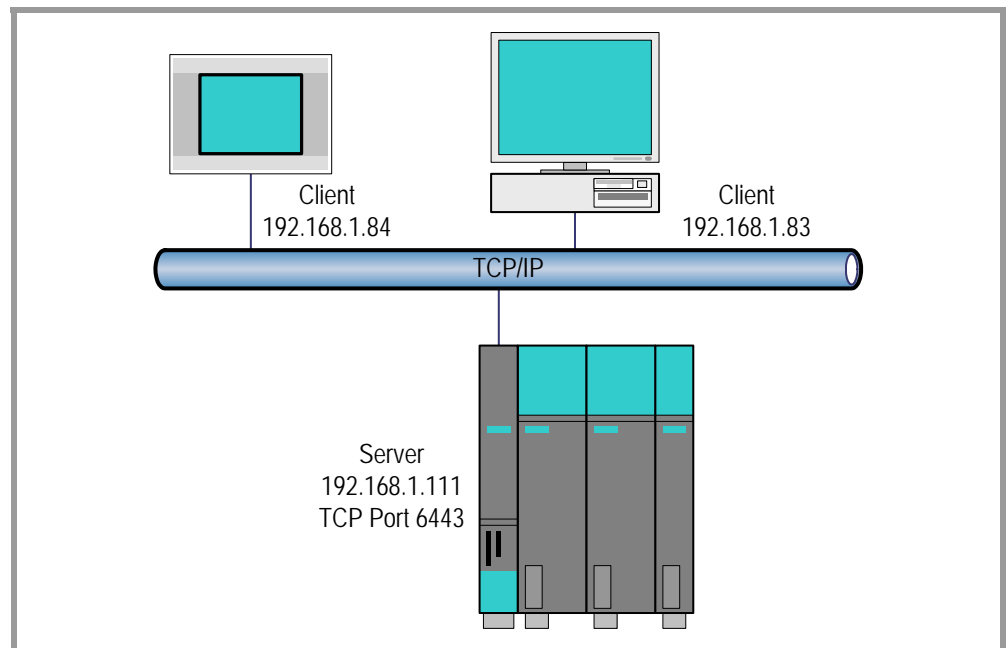


Fig. 1 Operating principle

2.2 Supported systems

2.2.1 Client

The following devices support communication with a «SIMOTION»:

- PC with GALILEO Open and Ethernet interface
- MICRO PANEL XV series (exceptions: XVC100, XVC600)
- MICRO PANEL M series
- MICRO PANEL GF2
- MA2

The term «client» is used in the following to represent these devices and the software running on them.

2.2.2 Server

The configuration manual «SIMOTION Technology Package OAMIF» provides a list of supported devices. The term «SIMOTION» is used in the following to represent these devices and the software running on them.

2.3 Supported data

2.3.1 Addresses

Declare the variables on the «SIMOTION» in the INTERFACE of the units. All sources that appear in the SCOUT under the heading PROGRAMS are defined as units:

- ST programs
- MCC sources
- LAD/FDB sources

Configure the name of the unit on the «SIMOTION» and the client with exactly the same upper and lower case.

The case is currently not relevant for the remaining address elements.

However, we recommend using the exact upper and lower case for all address components.

2.3.2 Variable type

Declare the variables on the «SIMOTION» with a supported variable type:

- VAR_GLOBAL
- VAR_GLOBAL_RETAIN


2.3.3

Data type

Declare the variables on the «SIMOTION» with a supported data type:

| Data type | Comment |
|----------------------------|---|
| BOOL | – |
| SINT | – |
| USINT, BYTE | The communication server does not distinguish between USINT and BYTE. |
| INT | – |
| UINT, WORD | The communication server does not distinguish between UINT and WORD. |
| DINT, Enumeration types | Enumeration types are transferred as DINT. The writing of an undefined value in the enumeration type is not detected. |
| UDINT, DWORD | The communication server does not distinguish between UDINT and DWORD. |
| REAL | REAL can also be mapped in the client to LREAL. The usable value range is not extended by this. |
| LREAL | LREAL can also be mapped in the client to REAL. The usable value range is restricted by this. |
| STRING | – |

Tab. 1 Supported data types

-  The following elementary data types are currently not supported:
- TIME
 - DATE
 - TIME_OF_DAY (TOD)
 - DATE_AND_TIME (DT)

2.3.4

Arrays and structures

Arrays are supported and are read very efficiently in a block. Structures are supported and are read by element. The structures on the «SIMOTION» can also contain variables with unsupported data types if these variables are not used by a client.

3 Hardware

Both client and also «SIMOTION» are provided with an Ethernet interface which can be used to connect them to an Ethernet network. Information on installation, wiring and commissioning is provided in the operating instructions of the devices.

4

Network



The «SIMOTION» must be accessible for each client via ICMP (ping) and via TCP Port 6443. If «SIMOTION» and client are not located in the same subnet, it may be necessary to configure the associated routers accordingly.

5 Software

5.1 SIMOTION

5.1.1 Installation

Install the «SIMOTION Technology Package OAMIF» on the «SIMOTION». This is available from Siemens under MLFB code 6AU1820-3DA20-0AB0. Refer to the «SIMOTION Technology Package OAMIF» configuration manual for the necessary installation steps.

5.1.2 Configuration

Refer to the «SIMOTION Technology Package OAMIF» configuration manual for the required configuration steps for the «SIMOTION».

5.2

GALILEO

The GALILEO visualization software supports several parallel communication channels. A communication channel is required for each «SIMOTION». If required you can also configure several communication channels to the same «SIMOTION».

5.2.1

Configuring communication in GALILEO

Choose «Siemens – SIMOTION MIIF» and set the communication parameters.

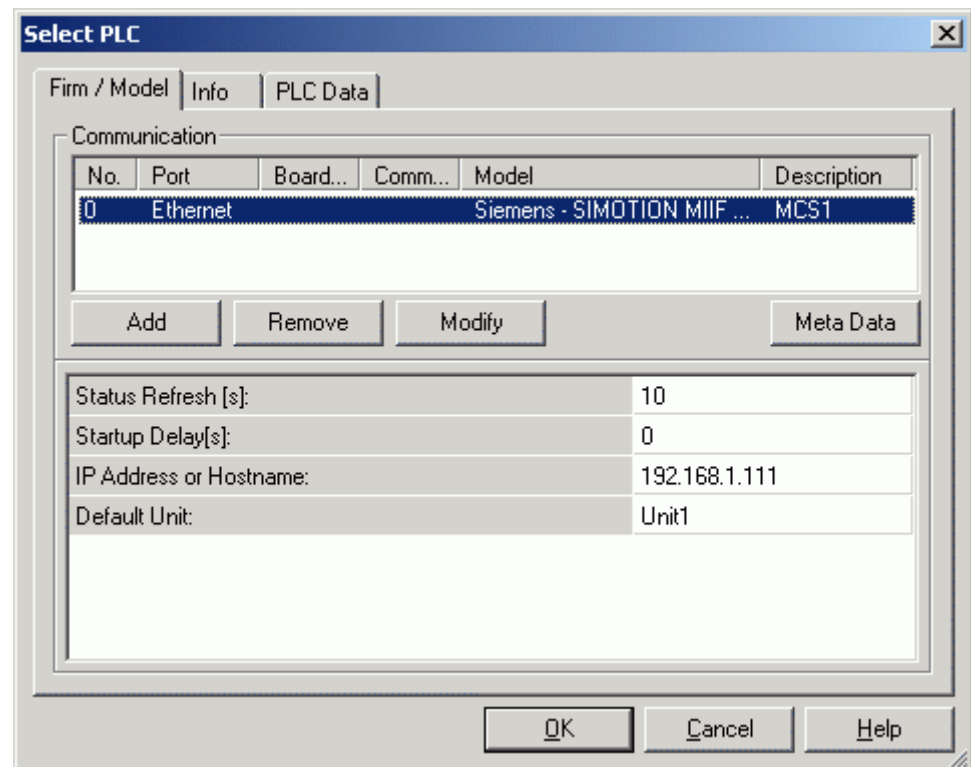


Fig. 2 Configuring communication in GALILEO

| Communication parameters | Comment |
|--------------------------|---|
| Status Refresh | For this read the Online Help of your GALILEO version. |
| Startup Delay | For this read the Online Help of your GALILEO version. |
| IP Address or Hostname | Enter in GALILEO the IP address of the «SIMOTION». If the network has a name resolution (e.g. DNS) you can also enter the network name of the «SIMOTION» instead of the IP address. |
| Default Unit | If you are using an address form without a unit for addressing, the default unit is used. |

Tab. 2 Communication parameters in GALILEO

5.2.2

Addressing variables in GALILEO

The chapter 2.3 describes which variables of the «SIMOTION» you can access. GALILEO supports the following address forms and data types:

| GALILEO | SIMOTION |
|--|-------------------------------|
| <tag> | Variable in the default unit |
| <tag>.<array index> | Array in the default unit |
| <struct>.<tag> | Structure in the default unit |
| <struct>.<tag>.<array index>[] | Structure in the default unit |
| <unit>.<tag> | Variable in <unit> |
| <unit>.<tag>.<array index>[] | Array in <unit> |
| <unit>.<struct>.<tag> | Structure in <unit> |
| <unit>.<struct>.<tag>.<array index>[] | Structure in <unit> |

Tab. 3 Address forms in GALILEO

| GALILEO | SIMOTION |
|---|--------------|
| Bit | BOOL |
| Errorbit | BOOL |
| Signed Byte | SINT |
| Unsigned Byte | USINT, BYTE |
| Signed Word | INT |
| Unsigned Word | UINT, WORD |
| Signed DWord | DINT |
| Unsigned DWord | UDINT, DWORD |
| Float | REAL |
| Float ¹⁾ | LREAL |
| String, 1 byte per character, zero terminated ²⁾ | STRING |
| String, 1 byte per character, Pascal ^{2), 3)} | STRING |
| String, 1 byte per character, not terminated ³⁾ | STRING |
| String, 1 word per character, zero terminated ²⁾ | STRING |
| String, 1 word per character, Pascal ²⁾ | STRING |
| String, 1 word per character, not terminated ³⁾ | STRING |

Tab. 4 Data types in GALILEO

- 1) Read values are limited to the value range of Float.
- 2) Configure in GALILEO one character more than on the SIMOTION.
- 3) Configure in GALILEO the same number of characters as on the SIMOTION.
- 4) The STRING of the SIMOTION is a string with 1 byte per character.
The communication protocol uses the Pascal convention.
Therefore prefer to use this data type in GALILEO.

5.3

THC

A THC component (THC = Tag Handle Container) is used on the client for the communication to the server. As a GALILEO user, you do not have anything to do directly with the THC component. However, you need the following information when using, for example, the ThcSymbolicClient library in CoDeSys.

5.3.1

Configuration

| Configuration parameters | Value |
|--------------------------|------------------------------------|
| Component | MicroPanel.SIMOTION.dll |
| ProgId | MicroInnovation.SIMOTION.TagServer |

Tab. 5 THC configuration parameters

| Communication parameters | Data type | Comment |
|--------------------------|-----------|--|
| ServerAddress | String | IP address or network name of the server e.g. 192.168.1.111 |

Tab. 6 THC communication parameters

5.3.2

Addressing

THC offers two ways of addressing variables.

- Specific
- Generic

Configure a unit in both cases. With generic addressing the unit is transferred as a program name, with specific addressing you place the designation «unit/» in front of the name (e.g.: «unit/Unit1.theStruct.bitArray[0] »).

Addresses in error messages are shown in specific addressing, even if you have configured it as generic.