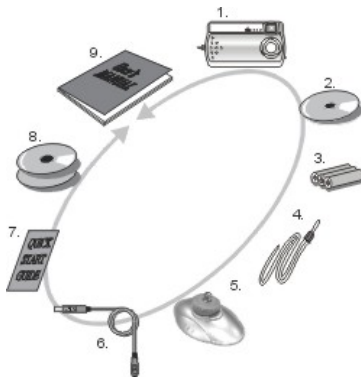


1

Review Package Contents

Make sure that the package contains the following items. If any items are missing, contact the reseller.

- DSC-100
- TWAIN Driver in CD
- 3xAAA Alkaline Battery
- Strap
- Cradle
- USB cable
- Quick Start Guide
- MGI Imaging software
- User's manual



2

TWAIN Driver Installation

The TWAIN driver allows other applications to communicate with the DSC-100. You must install a TWAIN-compliant application (i.e. the bundled imaging software) before downloading pictures to your PC.

Note:

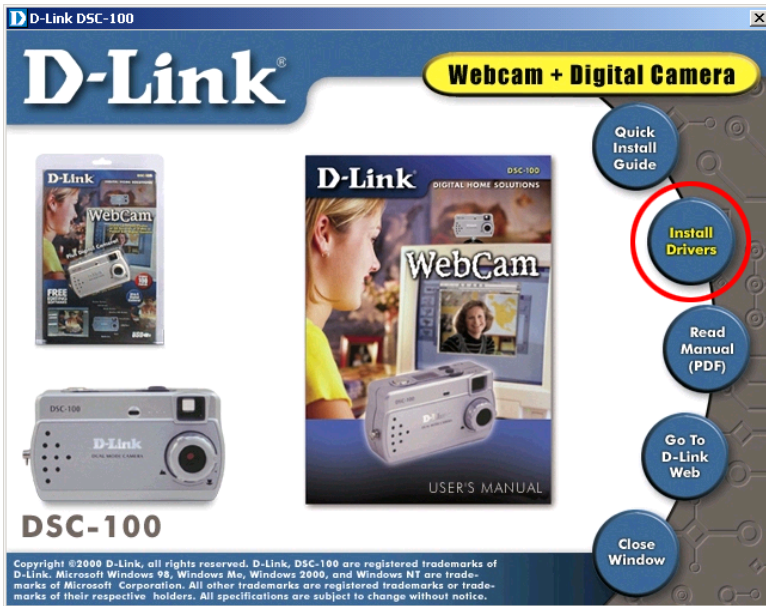
Please do not connect the DSC-100 to your computer before installing the TWAIN driver for the first time. If you have already connected the DSC-100 to the computer, disconnect the DSC-100 from the USB port, exit the "Add New Hardware Wizard" and restart the computer.

TWAIN Driver Installation *Continued...*

Turn on your computer.

Insert the DSC-100 Driver CD into the CD-ROM.

The Autorun screen will appear automatically.



Click on the button labeled **“Install TWAIN Driver”**

Note: If the Autorun screen does not appear, click on Start and select Run. In the run dialog box, type "drive:\ setup.exe" and click OK. Where “drive” is the letter of your CD-ROM drive.

3

Install Batteries and Power On

The DSC-100 receives power from the USB port when connected to the computer. When used as a digital camera, you must install batteries.

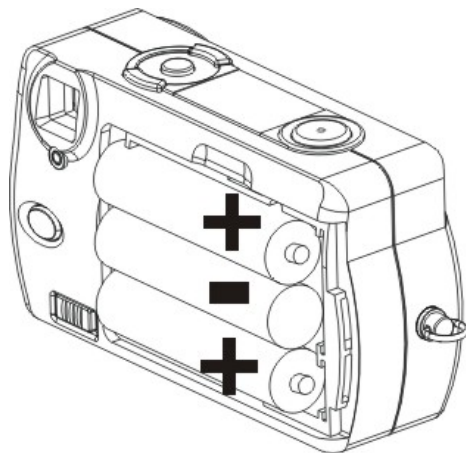
Open the battery chamber cover.

Insert 3xAAA batteries into the battery chamber and close the cover.

Press and hold "Power" button for 3 seconds to power on the camera.

When using a USB cable:

Connect one end of the USB cable to the USB port on your computer.



Connect the other end of the USB connector on the camera.

The DSC-100 will turn on automatically when connected to the computer.

Windows will detect and load all necessary drivers when the DSC-100 is connected to the USB port for the first time.

Note: Windows 2000 users may be prompted by a "Digital Signature" screen. Click "Yes" on each screen to continue the installation.

4

Install Imaging Software

Insert the MGI Videowave or MGI Photosuite installation CD into your CD-ROM drive.

The Autorun program will begin automatically.

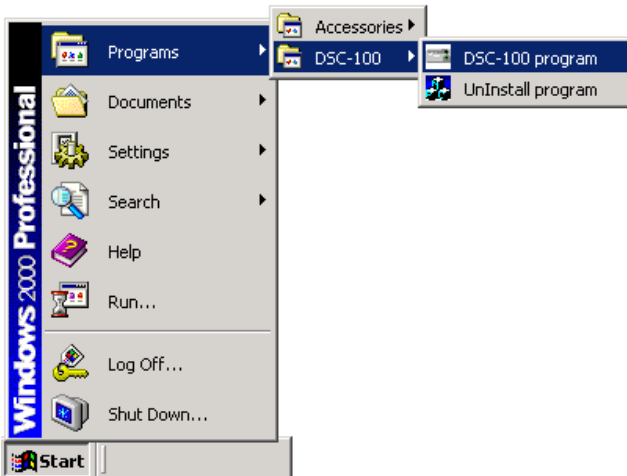
Follow the on-screen instructions to install each program.

If the Autorun program does not run, click on **Start** and select **Run**. In the run dialog box, type "drive:\setup.exe" where drive is the letter of your CD-ROM drive.

5

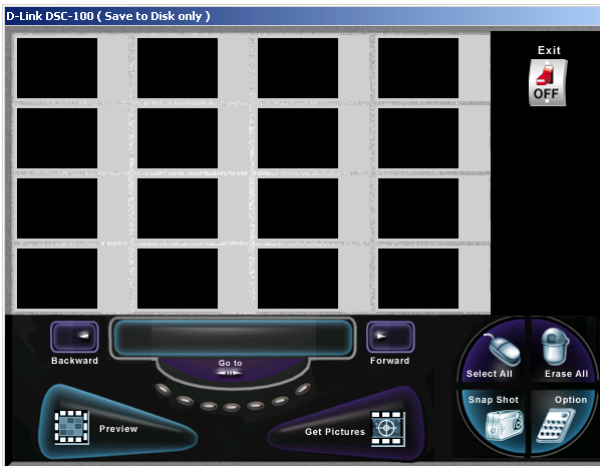
Download Digital Photos

Click on **Start** > **Programs** > **DSC-100** > **DSC-100 program**.



Download Digital Photos *Continued...*

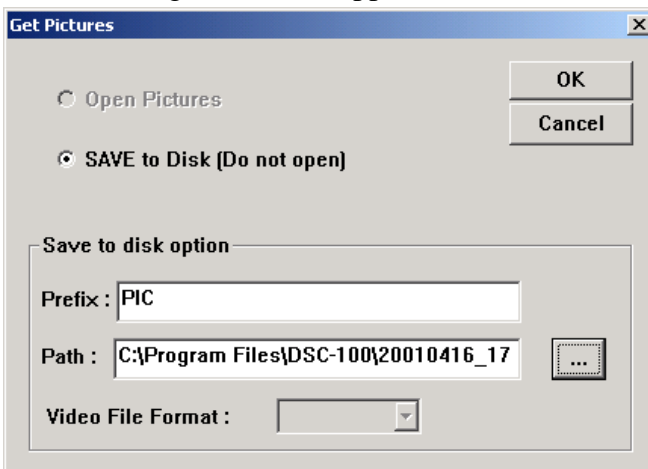
The following screen will be shown.



This screen allows you to preview and select which images you would like to save as a file.

Select the image(s) that you want to save and click the Get Pictures button.

The following screen will appear.



Download Digital Photos *Continued...*

Select a folder to save your images to in the **Path** box.

Click the **OK** button to download the images.

The files are saved as a JPEG file with an extension of .jpg.

The User's Manual includes detailed descriptions of the imaging software and how to download images using a graphics program and the TWAIN interface.

6 The DSC-100 as a Webcam

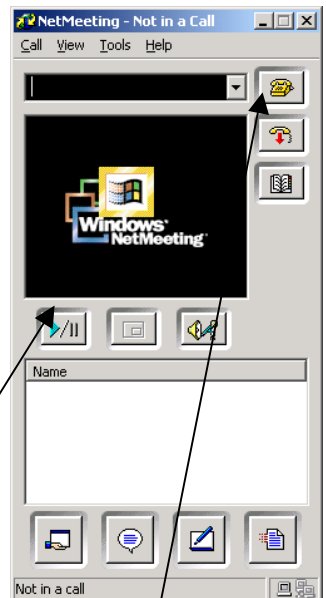
This section describes how to use the DSC-100 using Microsoft's Netmeeting software.

Open Netmeeting by clicking on **Start > Programs > Accessories > Communications > Netmeeting**.

If this is the first time running Netmeeting, you will need to go through the setup wizard. Follow the on-screen instructions until you get the screen shown to the right.

Press the Play button to display the webcam preview.

You can call someone to videoconference by pressing the phone button. Enter the correct IP address for the person you are calling and press **Call**.





Tips and Technical Support

- Keep the camera still until the camera is finished taking the picture.
- Use the supplied stand when possible to keep the camera stable.
- The camera works best in well lighted situations.

Caution:

- Do not attempt to service this product. Contact D-Link Technical Support for instructions on servicing.
- To reduce the risk of fire or electrical shock, do not expose this product to water or moisture.
- Do not expose this product to direct sunlight or extreme heat.
- Remove the batteries when not in use for extended periods of time.

D-Link Technical Support information is listed below if any problems arise during installation. Refer to the Troubleshooting guide at the end of this Quick Installation Guide before calling technical support.

D-Link Technical Support over Telephone:

(949) 790-5290

6 a.m. to 6 p.m. Monday thru Friday

D-Link Technical Support over the Internet:

www.dlink.com

D-Link[®]
DIGITAL HOME SOLUTIONS