

Panasonic

ideas for life

Digital Disk Recorders
WJ-HD316A
WJ-HD309A

Version 3.0

The WJ-HD300A Series can be connected directly to the Internet or your existing LAN or WAN using an existing Ethernet browser. They can deliver real time images from remote locations while also allowing you to record and archive images.

Quick search and retrieval let you see the images you want to see instantly. The enhanced search functions make it easy to store in as precisely the way you want.

Big, good eyes in changing and storing tapes, and replacing tape heads. Compared to conventional tape recording systems, Panasonic digital disk recorders drastically reduce the burden of labor and operating costs.

The Comprehensive Digital Recording Solution



With the WJ-HD300A Series, you can enjoy high image quality, and there is no need to worry about image degradation when images are recorded repeatedly.

The WJ-HD300A Series supports all of your customer's surveillance needs and allows for the implementation of various tailored systems.

The WJ-HD300A Series supports all of your customer's surveillance needs and allows for the implementation of various tailored systems.

With the built-in frame-advancing function, images from up to 5 or 15 seconds can be stored simultaneously on a single monitor. Searching and live monitoring can be performed simultaneously. You can playback any image when you want to record and monitor. The playback area can be a single window or divided up to sixteen windows.

DIGITAL DISK RECORDERS

WJ-HD300A

SERIES

The WJ-HD300A Series offers high quality pictures and disk saving recording utilizing a new compression technology.

Panasonic presents the new WJ-HD300A Series with a unique new system featuring a high compression ratio of 1/30 for practical use. Under the "All-in-One Solution" concept, all the vital recording components and features are condensed into one unit. With one single unit, unprecedented, highly reliable surveillance recording is possible in a wide range of applications. The WJ-HD300A Series also features System Scalability to meet extended user needs.

1/30 Super Compression: Proprietary Algorithm, Core Development of the WJ-HD300A Series

- New algorithm divides entire screen into high and low frequency elements to reduce artificial distortion and noise compared to conventional compression.
- In addition, the mode-A compression data calculation within four (4) field images (called "Temporal Transforms"), outputs data according to the amount of movement: "No Movement," "Slow Speed Movement," "Medium Speed Movement," and "High Speed Movement." Redundant data can be reduced through this compression process.



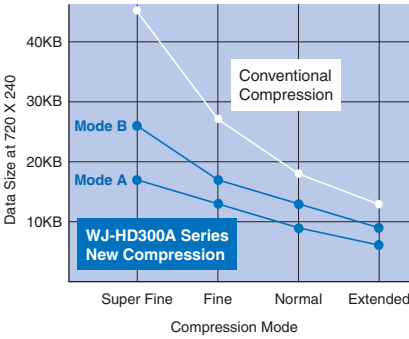
WJ-HD316A

WJ-HD309A

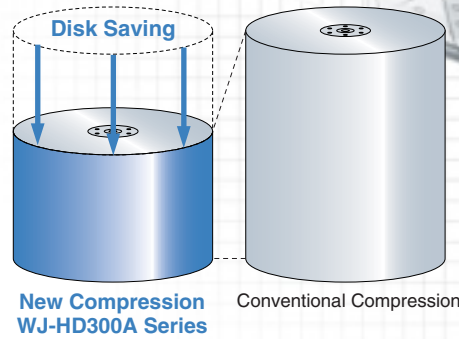
Picture Quality & Disk Saving

Compared to a conventional algorithm, the data compression ratio has improved approximately 1.5 ~ 2, depending on object and compression mode.

■ Data Size and Compression Mode



■ Comparison



All in One Solution

Instinctive Operation

Simple and instinctive, the functional base layout of the WJ-HD300A Series front panel is designed for ease-of-use. Eight (8)* directly connected Panasonic dome cameras can be controlled from the front panel. Also, the GUI based menu screen enables quick set up for flexible, more complex operations.

(* Six (6) cameras for the WJ-HD309A)

OPERATION BASE LAYOUT



GUI BASE MENU



Value Added Features

The WJ-HD300A Series is equipped with the latest value added features to satisfy your requirements such as system reliability, operation efficiency, and cost savings.

Features include:

- High-density recording: 60 ips* (120 ips* @ SIF).
- Full rate live multi screen: 60 ips*.
- Simultaneous Live/Rec./Playback/Network.
- 16 independent recording profiles.
- Disk partitioning: Normal, Alarm, and Copy.
- RAID 5 and mirror redundant recording.
- Advanced VMD (Video Motion Detector): Area, vector, and duration.
- Various Network Operations: Live, PTZ control, Recording, Playback, and Downloading.
- Network and serial open architecture.
- Improved picture quality by optimized compression algorithm.
- Enhanced archive solutions via USB port.
- Scheduling of WV-CS954 Auto Tracking function from admin. software.

(* ips = image per second)

*The above all photographs were taken for the purpose of explanation ; actual images may differ.

Superior surveillance made possible by state-of-the-art digital features.

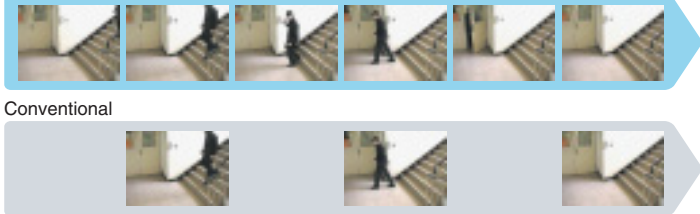


High-Refresh Rate Recording

High-speed digital processing enables high-refresh rate recording — to ensure critical moments are not missed.

- Max. 30 image per sec. @ 720 x 480 (FRAME/NTSC)
- Max. 60 image per sec. @ 720 x 240 (FIELD/NTSC)
- Max.120 image per sec. @ 360 x 240 (SIF/NTSC)

WJ-HD300A Series

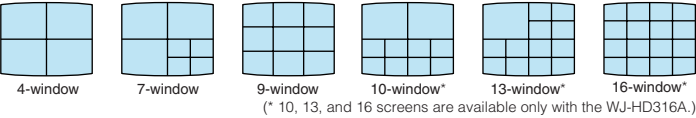


Full Rate Live Multi-Screen

Even when images from multiple cameras are displayed on a multi-screen, live monitoring can be achieved on all cameras at a full rate of 60 ips (image per second). Experience real-time, full surveillance with full-rate video images.



Multi-screen in versatile variations



16 Independent Recording Profiles

Flexible recording setup

Independent recording settings (recording mode/recording rate/picture quality) for each camera* enables flexible setup. (*16 cameras for the WJ-HD316A and 9 cameras for the WJ-HD309A.)

- **Recording mode:** Manual / Schedule / Event / Emergency
- **Recording rate:** Set the ips (image per second) as needed.
- **Picture quality:** Super Fine / Fine / Normal / Extended

User-friendly setup

The user friendly GUI supports easy and smooth setup while confirming current status graphically.

GUI Setup Menu

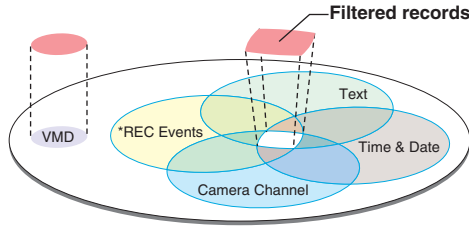
Recording Action PROG 1

	MANUAL		SCHEDULE		PRE EVENT		POST EVENT	
	RATE	QUALITY	RATE	QUALITY	RATE	QUALITY	RATE	QUALITY
CAM1	2ips	EXA	1ips	EXA	1ips	FQB	5s	5ips
CAM2	2ips	NQA	1ips	NQA	1ips	FQB	5s	5ips
CAM3	2ips	FQA	1ips	FQA	1ips	FQB	5s	5ips
CAM4	2ips	SFA	1ips	SFA	1ips	SFB	5s	5ips
CAM5	2ips	NQA	1ips	EXA	1ips	EXB	5s	3ips
CAM6	2ips	FQA	1ips	NQA	1ips	NQB	5s	3ips
CAM7	2ips	SFA	1ips	FQA	1ips	FQB	5s	3ips
CAM8	2ips	SFA	1ips	NQA	1ips	SFB	5s	3ips
CAM9	2ips	EXA	OFF	EXA	1ips	EXB	5s	2ips
CAM10	2ips	NQA	OFF	NQA	1ips	NQB	5s	2ips
CAM11	2ips	FQA	OFF	FQA	1ips	FQB	5s	2ips
CAM12	2ips	SFA	OFF	SFA	1ips	SFB	5s	2ips
CAM13	2ips	EXA	1ips	EXA	1ips	SFB	5s	5ips
CAM14	2ips	NQA	1ips	NQA	1ips	SFB	5s	3ips
CAM15	2ips	FQA	1ips	FQA	1ips	FQB	5s	3ips
CAM16	2ips	SFA	1ips	SFA	1ips	SFB	5s	2ips

Instant Search and Playback

Filtered Search

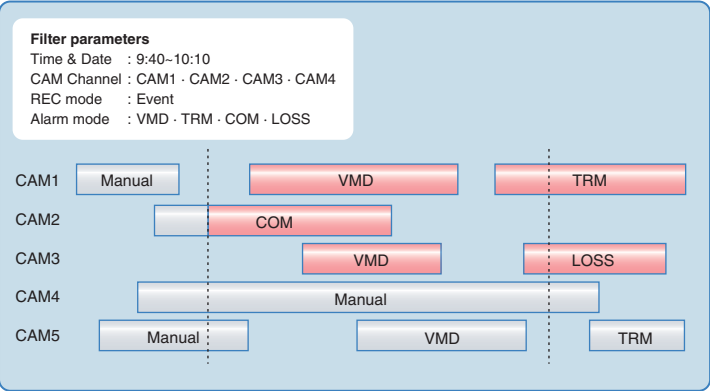
Various parameters/filters such as time & date, camera channel, REC events, text and VMD enables instant search and playback from mass recorded data.



* REC Event filter

REC mode	Emergency, Event, Schedule, Manual
Alarm mode	VMD, Terminal, Command, Video loss

Filtered Search (Example)



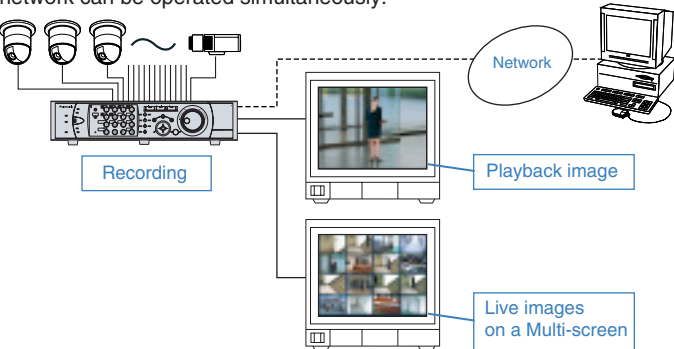
Thumbnail Display

In addition to search result by "list", "thumbnail" display is available for visual confirmation.



Live / Recording / Playback / Network Simultaneous Performance

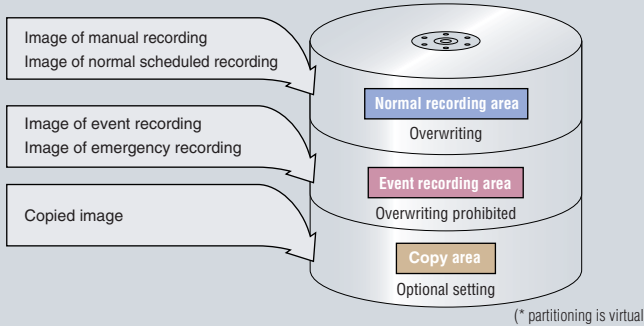
By adopting high speed signal processing, live / recording / playback / network can be operated simultaneously.



Disk Management

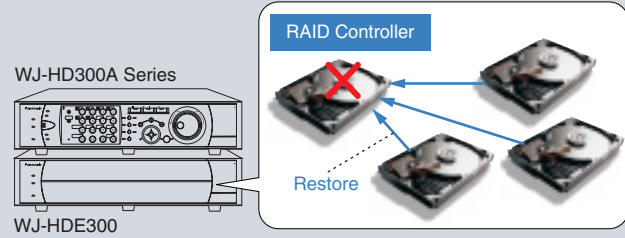
Hard Disk Partitioning Function* automatically selects the partition to be recorded.

The hard disk is divided into three partitions: "Normal Recording," "Event Recording," and "Copy." Image data is automatically recorded to the appropriate partition according to the recording mode. For the normal recording partition, the data is overwritten when the capacity is full. The event recording partition prohibits overwriting to protect data. Copy partition prepares data for retrieval to external medium.



RAID5 / Mirroring Function

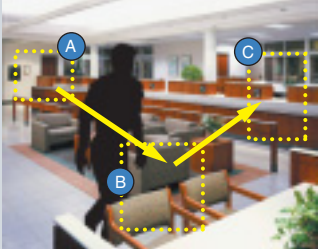
RAID5 distributes image data to multiple hard disks in the extension unit. Upon hard disk breakdown, lost data can be restored from other hard disks. When using one WJ-HD300A Series unit, mirroring function is available for data backup.



Advanced VMD

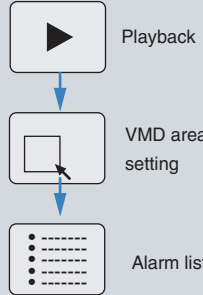
A new mode is added for sophisticated VMD detection.

DETECT VECTOR & DURATION



Playback VMD

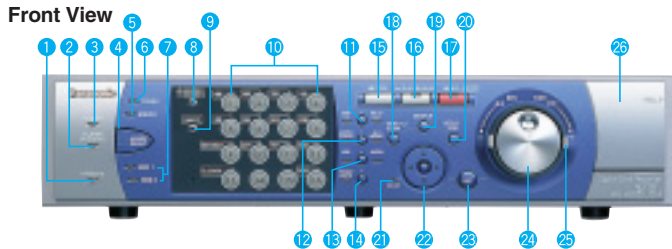
One VMD area can set one playback image for motion search.



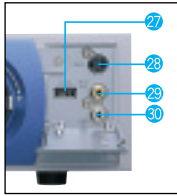
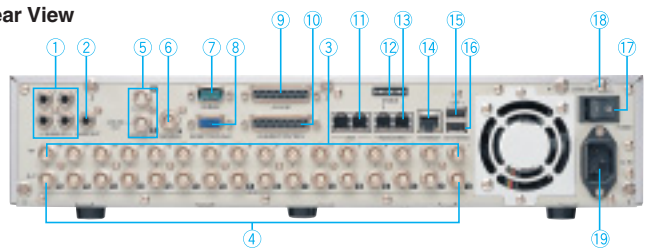
*The above all photographs were taken for the purpose of explanation ; actual images may differ.

MAJOR OPERATING CONTROLS: WJ-HD316A

Front View

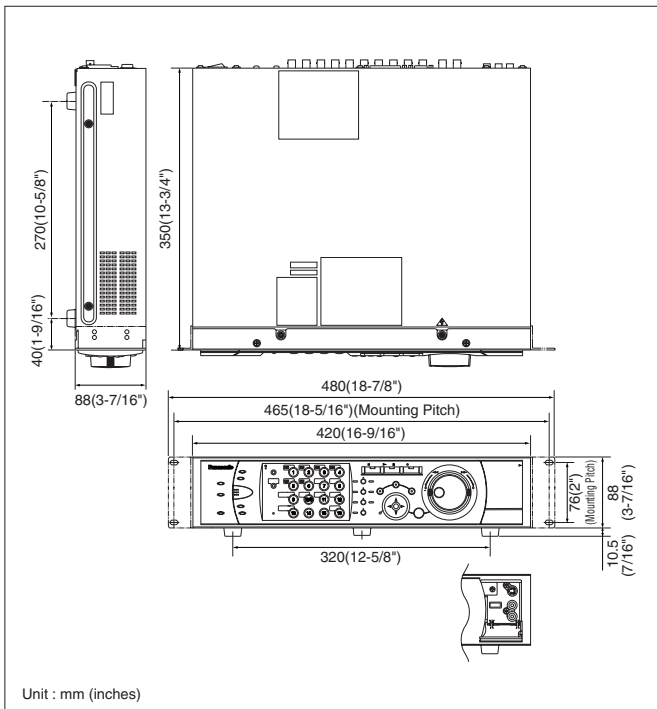


Rear View



- | | | | |
|------------------------------|---|-----------------------------|----------------------------|
| 1 Operate Indicator | 11 Pan, Tilt, Latest Recorded Image Playback Button | 21 Busy Indicator | 11 PS-Data Ports |
| 2 Alarm Suspension Indicator | 12 Zoom, Focus, A - B Repeat Button | 22 Arrow Buttons | 12 Mode Switches |
| 3 Alarm Indicator | 13 Iris, Listing Button | 23 Set Button | 13 RS485 Ports |
| 4 Alarm Reset Button | 14 Preset, Auto Pan Button | 24 Jog Dial | 14 Network Port |
| 5 Error Indicator | 15 Stop Button | 25 Shuttle Ring | 15 Copy Port |
| 6 Timer Indicator | 16 Play/Pause Button | 26 Connectors Cover | 16 Cascade In Connector |
| 7 HDD Access Indicators | 17 Record Button | 27 Copy Port | 16 Extra Storage Port |
| 8 Monitor Switch Button | 18 Slow Button | 28 S-Video Output Connector | 17 Serial Connector |
| 9 Shift Button | 19 Search Button | 29 Video Output Connector | 18 Monitor Connector |
| 10 Camera Selection Buttons | 20 Setup, Escape Button | 30 Audio Output Connector | 19 Alarm Connector |
| | | | 10 Alarm/Control Connector |

DIMENSIONS: WJ-HD316A



SPECIFICATIONS: WJ-HD316A

General		
Power Source	120 V AC, 60 Hz	
Power Consumption	75 W	
Ambient Operating Temperature	+5°C - +45°C (41°F - 113°F)	
Ambient Operating Humidity	Less than 90 %	
Dimensions	420 mm (W) x 88 mm (H) x 350 mm (D) [16-9/16" (W) x 3-7/16" (H) x 13-3/4" (D)] (excluding rubber feet and projections)	
Weight	9.5 kg (21 lbs.)	
Input/Output		
Video	Video Input Connectors	1 V [P-P] / 75 Ω, with auto termination loop-thru, vertical timing pulse multiplexed, x8 (1 to 8 CH) (BNC) 1 V [P-P] / 75 Ω, with auto-termination loop-thru, x8 (9 to 16 CH) (BNC)
	Cascade Input Connector	1 V [P-P] / 75 Ω (BNC)
	Video Output Connectors	1 V [P-P] / 75 Ω, active loop-thru output, x8 (1 to 8 CH) (BNC)*1 1 V [P-P] / 75 Ω, active loop-thru output, x8 (9 to 16 CH) (BNC)
	Monitor Output Connectors	1 V [P-P] / 75 Ω, x2 (BNC)
	Monitor Output Connector (VGA)	RGB output, x1 (15-pin D-sub)
	S-Video Output Connector	Y = 1 V [P-P] / 75 Ω, C = 0.286 V [P-P] / 75 Ω, x1 (S-video output connector)
	Video Output Connector (Front Panel)	1 V [P-P] / 75 Ω, x1 (RCA pin)
	Audio	Audio Input Connectors
Audio Output Connectors		~10 dB, 600 Ω, unbalanced, x2 (RCA pin)
Others	Expansion Connector	High-speed serial interface, 480 Mbps (theoretical value), x1
	Copy Connectors	High-speed serial interface, 480 Mbps (theoretical value), x2
	Control Connectors	Emergency recording input ² , additional space warning output ³ (for devices connected to copy connectors), HDD trouble output ³ , camera trouble output ³ , trouble output ³ , electricity failure recovery completion output ⁴ , time adjust input/output ⁵ , sequence switching input/output ⁵ , electricity failure detection input ² , external recording mode switching ² (25-pin D-sub), +5 V output ⁷
	Alarm Port	1 to 8 CH alarm input ⁶ , 1 to 16 CH alarm input ² , 1 to 16 alarm output ³ , alarm recovery input ² , alarm suspension input ⁵ (25-pin D-sub)
	RS-485 Ports	RS-485 (full duplex/half duplex ⁸), x2 (RJ-11)
	DATA Ports	RS-485, x2 (RJ-11)
	SERIAL Connector	RS-232C, x1 (9-pin D-sub)
	Ethernet Port	10 Base-T/100 Base-TX (RJ-45)

*1. When power is not supplied, video output signal was not sent from the unit even if video input signal is supplied.
 *2. Non-voltage N.O. Contact, 100 mA, +5 V pull-up *3. Open collector output, maximum under conditions of 24 V DC and 100 mA or less *4. High (+12 V, 6.3 mA) *5. 30 KΩ, 5 V pull-up, -100 mA, N.O. Contact *6. 5 V pull-up, -100 mA, Non-voltage N.O. Contact input *7. 240 mA at maximum *8. Changeable with the mode switch

DISK DATA REFERENCE CHART • NTSC color video signal • Recording images from a single camera channel • 250GB HDD • Auto mode • Manual recording • Audio OFF

COLOR FINE				
Field Mode (Sampling Pixel Size: 720 x 240)				
One Camera ch (ips*)	SFB	FQB	NQB	EXB
0.1	17,880	26,820	35,760	53,650
0.5	3,570	5,360	7,150	10,730
1	1,780	2,680	3,570	5,360
5	350	530	710	1,070
7.5	230	350	470	710
15	110	170	230	350
30	50	80	110	170
60	20	40	50	80

*ips (image per second)

(Hours)

COLOR FINE				
SIF Mode (Sampling Pixel Size: 360 x 240)				
One Camera ch (ips*)	SFB	FQB	NQB	EXB
0.1	35,760	53,650	71,530	107,300
0.5	7,150	10,730	14,300	21,460
1	3,570	5,360	7,150	10,730
5	710	1,070	1,430	2,140
7.5	470	710	950	1,430
15	230	350	470	710
30	110	170	230	350
60	50	80	110	170

*ips (image per second)

(Hours)

(above figures are approximate, actual recording time may differ depending on picture imaging under the conditions)

COLOR STD				
Field Mode (Sampling Pixel Size: 720 x 240)				
One Camera ch (ips*)	SFB	FQB	NQB	EXB
0.1	23,840	35,760	47,680	71,530
0.5	4,760	7,150	9,530	14,300
1	2,380	3,570	4,760	7,150
5	470	710	950	1,430
7.5	310	470	630	950
15	150	230	310	470
30	70	110	150	230
60	30	50	70	110

*ips (image per second)

(Hours)

COLOR STD				
SIF Mode (Sampling Pixel Size: 360 x 240)				
One Camera ch (ips*)	SFB	FQB	NQB	EXB
0.1	47,680	71,530	95,370	143,060
0.5	9,530	14,300	19,070	28,610
1	4,760	7,150	9,530	14,300
5	950	1,430	1,900	2,860
7.5	630	950	1,270	1,900
15	310	470	630	950
30	150	230	310	470
60	70	110	150	230

*ips (image per second)

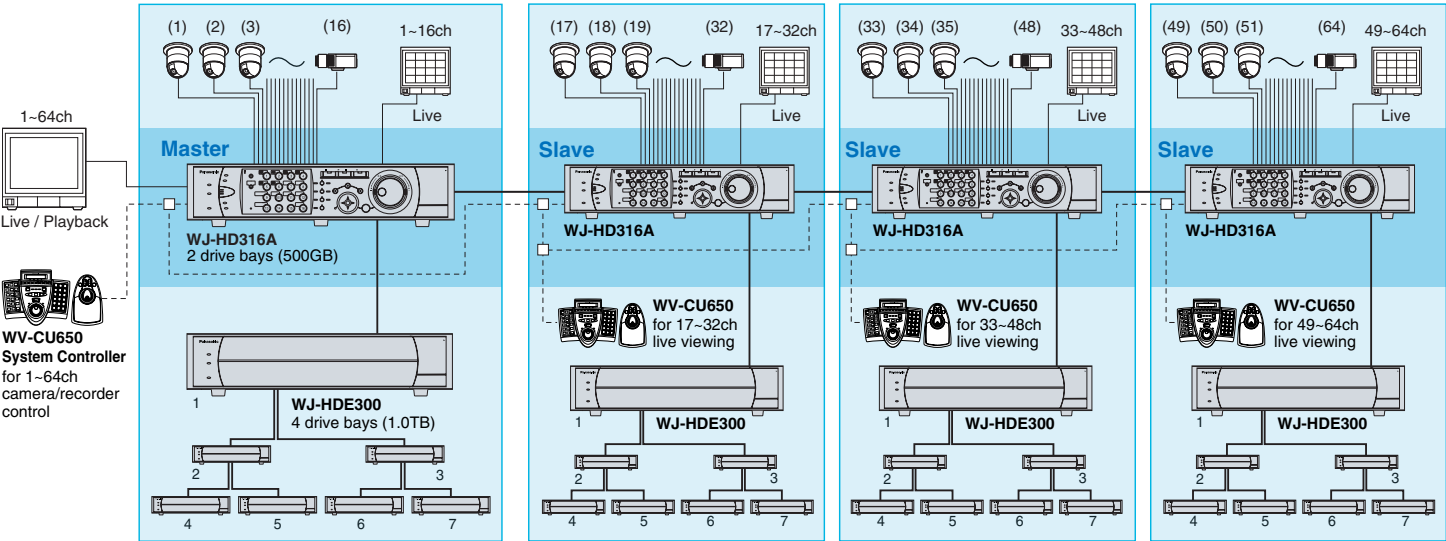
(Hours)

*The above all photographs were taken for the purpose of explanation ; actual images may differ. 7

System Scalability:

Viewing cascade connection (up to 4 main units)

Up to four (4) WJ-HD316A units can be cascaded to increase maximum 64 video inputs. All 64 cameras can be switched and viewed in live and playback from the master, while each slave unit has its own live viewing monitor.



Expandable to 7.5 Terabytes (TB) storage

In addition to a total 500 GB capacity of the main unit WJ-HD316A/309A, one WJ-HDE300 extension unit provides up to 1.0 TB (1,000 GB). With seven (7) extension units, the maximum capacity can be extended up to 7.5 TB to satisfy long recording requirements.

Built-In Network Interface:

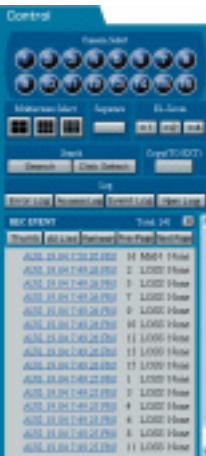
Network functions include live image monitoring through multi-screen display, camera PTZ control, recording/search/playback, downloading image/log data, e-mail notification, and setup data upload/download.

Network Operating Menu



Control Tab

The switcher function for live monitoring is operable.



Cam Tab

Remote control the camera selected on control tab page. (Only for 1-8ch Panasonic PTZ dome cameras)



HDD Tab

Operation for recorded images such as playback or downloading (saving) to PC.



System Controller

WV-CU650



KEY FEATURES

- Controller for the WJ-HD300A Series of Digital Disk Recorders

Integrated System Control

Camera Control

- Detached joystick controls Pan/Tilt and Zoom, allowing seamless tracking.
- Larger numeric keypad provides direct access to cameras.

Recorder Control

- Jog Dial and Shuttle Ring for smoother control
- Dedicated Record, Play, and Search buttons

Switcher Control

- Image switching and sequencing buttons for Matrix System150

Easy to Operate While Focused on Surveillance

Universal Design for Right or Left Hand Use

- Detached joystick pad
- Layout with Jog Dial and Shuttle Ring in center

More Comfortable Extended Surveillance

- Soft padding on joystick
- Adjustable joystick height for large or small hands
- Designed with a low center of gravity and adjustable angle to minimize strain

Instinctive Operation

- Cockpit style button layout

System Management Capability

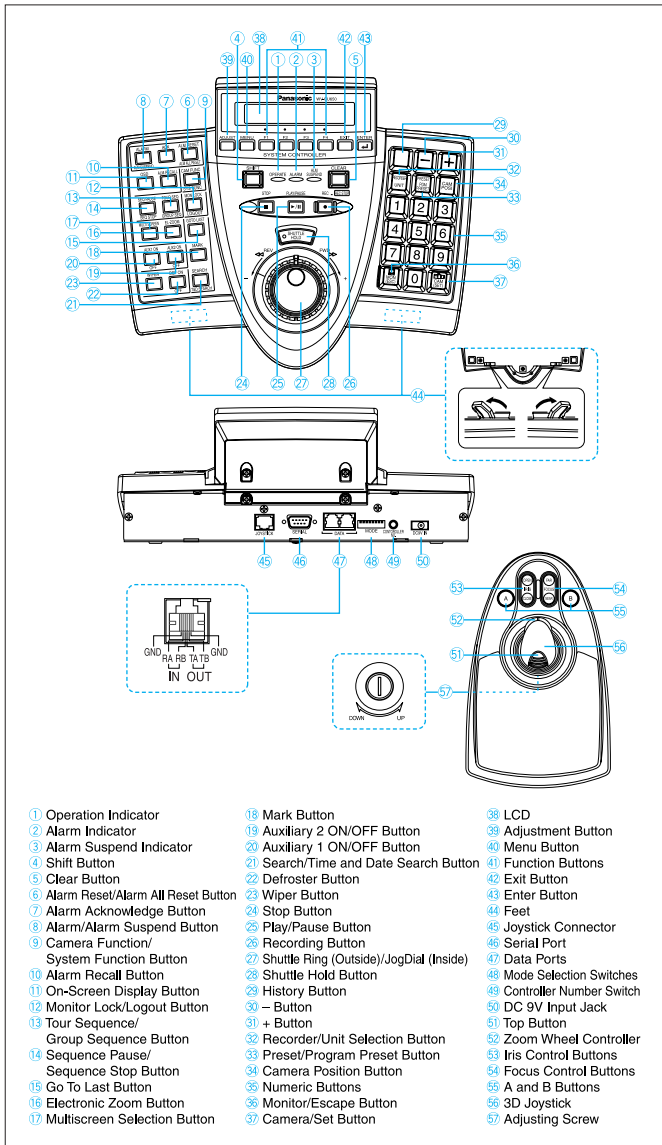
- User level management for registered users
- User assignable buttons: four in main unit plus three in palm rest
- Setup data can be transferred via RS485 to another WV-CU650.

SPECIFICATIONS (for WJ-HD300A Series)

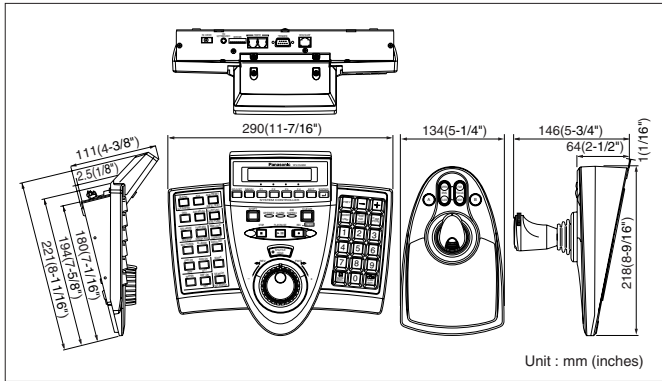
Power Source	9 V DC, 300 mA (using the supplied AC adapter)
Power Source (supplied AC adapter)	120 V AC, 60 Hz, 200 mA
Data Output/Input Port	6-conductor modular jack (RS-485, Full duplex) x2
Serial Port	9-pin D-sub connector
Controller Number	1 to 8 (rotary switch)
Ambient Operating Temperature	-10°C to +50°C (14°F to 122°F)
Unit Number Selection	Up to 16 (PS-Data)
Monitor Number Selection	1 to 2
Camera Number Selection	1 to 256 (up to 16 WJ-HD316A)
Dimensions (W x H x D)	Main Unit: 290 x 111 x 221 mm (11-7/16" x 4-3/8" x 8-11/16") 3D Joystick Unit: 134 x 146 x 218 mm (5-1/4" x 5-3/4" x 8-9/16")
Weight (without the AC adapter)	Main Unit: 1.3 kg (2.86 lbs.) 3D Joystick Unit: 0.8 kg (1.76 lbs.)

The Surveillance Cockpit for Total Control of the WJ-HD300A Series

MAJOR OPERATING CONTROLS



DIMENSIONS



Management PC Software

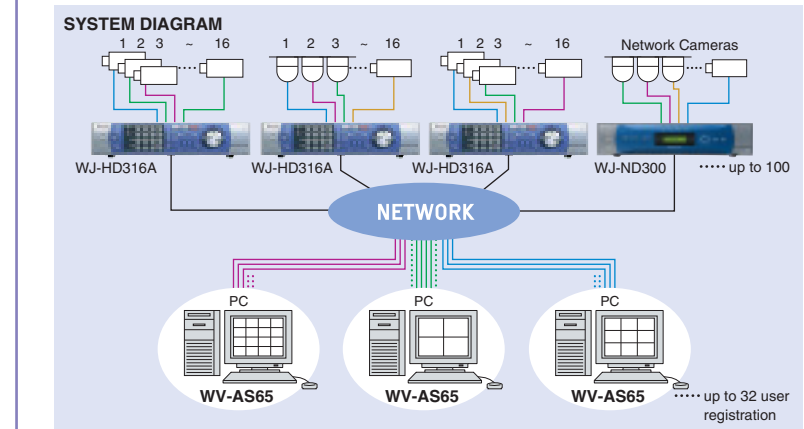
WV-AS65



- 1 Title Bar 2 Menu Bar 3 Tool Bar 4 FAVORITE Tab 5 RECORDER Tab 6 Image Display Area 7 Channel Search Buttons 8 Camera Control Panel 9 Recorder Control Panel 10 Status Bar

System Integration with WJ-ND300 Network Disk Recorder

Up to a total of 100 WJ-HD300A and WJ-ND300 Network Disk Recorders can be combined to create a hybrid system.



SPECIFICATIONS

WJ-HD300A Series Registration Capacity	up to 100 sets
User Registration Capacity	up to 32 users
User Types	5 types
Schedule Registration Capacity	up to 400 schedules
Favorite Registration Capacity	up to 16 cameras
Simultaneous Downloads	up to 10 accesses
Simultaneous Camera Image Displays	up to 16 cameras
Simultaneous File Playbacks	up to 4 files

*Trademark and registered trademark

• Microsoft®, Windows® are registered trademarks of U.S. Microsoft Corporation or the corresponding Microsoft Corporation of another country. • Intel® and Pentium® are registered trademarks or trademarks of Intel Corporation of the U.S. or the corresponding Intel Corporation of another country and subsidiary companies. • Adobe®, Adobe logo, and Acrobat®, are trademarks of Adobe Systems Incorporated (Adobe Systems Co.). • Other company names and product names are trademarks or registered trademarks of the respective companies.

Main Application

Network mode

WV-AS65 operates the WJ-HD300A Series of Digital Disk Recorders remotely via the network.

- Facilitates monitoring live images captured by cameras connected to the recorder and camera operation.
- Makes possible the recording, search and playback of recorded images from multiple recorders.

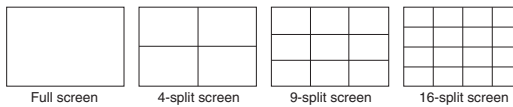
Local mode

WV-AS65 facilitates search, playback and management of image files downloaded on PC hard disk.

Downloader

WV-AS65 downloads images recorded on the disk recorder.

Displays four patterns (1, 4, 9, 16 screens) of recorded live images or playback images.



Main unit operation

There are a variety of operations that can be performed with the disk recorder alone: manually starting and stopping the recording, text attachment to recorded image, recorder log display, and data copying.

Three search functions

Three types of search functions are installed: recorded event search, playback VMD search, and marking search. A number of recorders can be searched simultaneously and required images can be retrieved quickly.



OPERATING ENVIRONMENT

This PC software can be installed in PCs with the following environments

OS	Microsoft® Windows® 2000 Professional SP4 Microsoft® Windows® XP Professional or Home Edition SP2
Computer	IBM PC / AT Compatible
CPU	Pentium® 4, 3.0 GHz or above
Memory	512MB or above
Hard Disk Capacity	About 80MB level is required for application installation.* 1,024 x 768 pixel resolution level or above, HIGH color 16 bits or above (Full-color environment is recommended)
Interface	10/100/1000 Mbps network interface card installed
Web Browser	Microsoft® Internet Explorer 6.0 SP1 or later

*It is necessary to prepare space to receive files from the recorder that is separate from the application installation.

STANDARD PRODUCT CONFIGURATIONS

Digital Disk Recorders
WJ-HD316A (16ch)
WJ-HD309A (9ch)



- Built-in 250GB HDD unit, and 1 drive bay for optional HDD unit
- Built-in an Ethernet port

OPTIONAL COMPONENTS & ACCESSORIES

Extension Unit
WJ-HDE300
 (4 drive bays for optional HDD units)



System Controllers
WV-CU360C

WV-CU650

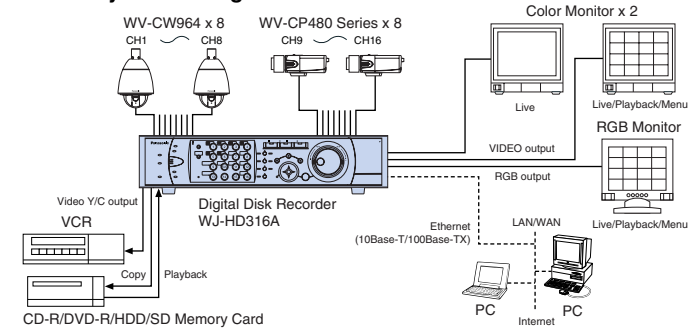


Management PC Software
WV-AS65

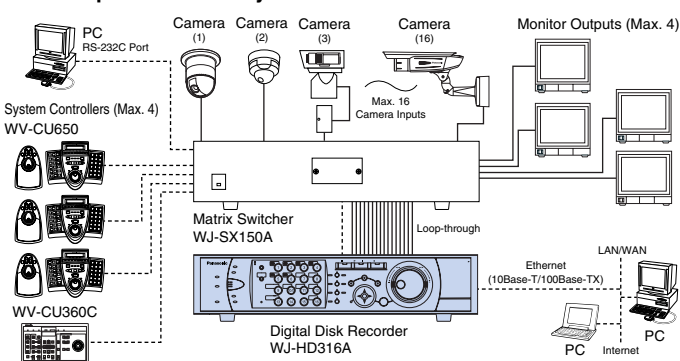


SYSTEM EXAMPLES

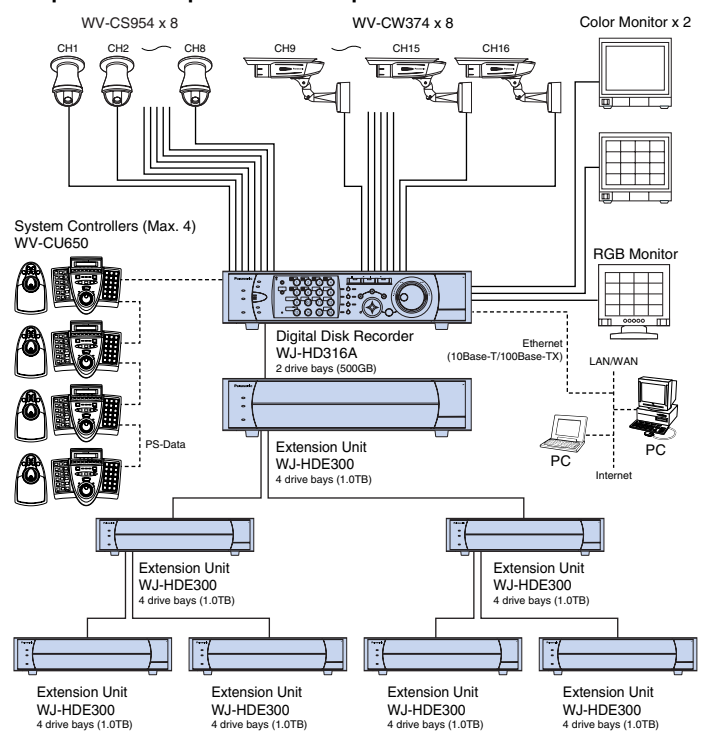
1 Basic System Configurations



2 With optional Matrix System 150



3 Up to 7.5TB Capabilities with Optional Extension Unit & HDDs



OPTIONAL SURVEILLANCE EQUIPMENTS

COLOR SURVEILLANCE CAMERAS

Super Dynamic III
 Color Dome Camera
WV-CS954



Weather Proof
 Super Dynamic III
 Color Dome Camera
WV-CW964



Weather Proof
 Super Dynamic II Color Camera
WV-CW374



Vandal Proof
 Super Dynamic II Color Cameras
WV-CW474A Series



Vandal Proof Color Cameras
WV-CW244 Series



SDIII
 Super Dynamic

SDIII
 Super Dynamic

Super Dynamic III
 Color Surveillance Cameras
WV-CP480 Series



Compact Color Surveillance Camera
WV-CP254H



1/3-type CCD Color Surveillance Cameras
WV-CP240EX Series



Color Dome Camera
WV-CF224EX



MATRIX SYSTEM 150



Important – Safety Precaution: carefully read the operating instructions and installation manual before using this product.

– Panasonic can not be responsible for network performance and/or other manufacturer products that reside on the network.

• All TV pictures are simulated. • Weights and dimensions are approximate. • Specifications are subject to change without notice. • These products may be subject to export control regulations.

Panasonic

Panasonic System Solutions Company
 Unit Company of Panasonic Corporation of North America

Security Systems

Website : www.panasonic.com/security

For Customer Support : call 1.877.733.3689

Executive Office : Three Panasonic Way 2H-2, Secaucus, New Jersey 07094

Zone Offices

Eastern : Three Panasonic Way, Secaucus, New Jersey 07094

Central : 1707 N. Randal Road, Elgin, IL 60123

Southern : 1225 Northbrook Parkway, Suwanee, GA 30024

Western : 6550 Katella Ave., Cypress, CA 90630

DISTRIBUTED BY:

PANASONIC CANADA INC.

5770 Ambler Drive, Mississauga, Ontario, L4W 2T3 Canada (905) 624-5010

PANASONIC PUERTO RICO INC.

DIVISION OF PANASONIC CORPORATION OF NORTH AMERICA

San Gabriel Industrial Park, 65th Infantry Ave. KM. 9.5 Carolina, P.R. 00985 (809) 750-4300

Printed in Japan

WJ-JHD300C(2P-517E)